

Data Path : Z:\pestpcbsrv\HPCHEM1\ECD_S\Data\PS102020\
 Data File : PS012921.D
 Signal(s) : Signal #1: ECD1A.ch Signal #2: ECD2B.ch
 Acq On : 20 Oct 2020 23:38
 Operator : DD\AJ
 Sample : L4214-07
 Misc : LOD-WATER-
 ALS Vial : 28 Sample Multiplier: 1

Instrument :
 ECD_S
 ClientSampleId :

Integration File signal 1: autoint1.e
 Integration File signal 2: autoint2.e
 Quant Time: Oct 21 02:49:36 2020
 Quant Method : Z:\pestpcbsrv\HPCHEM1\ECD_S\Method\PS102020.M
 Quant Title : 8080.M
 QLast Update : Wed Oct 21 02:27:47 2020
 Response via : Initial Calibration
 Integrator: ChemStation

Volume Inj. : 2 µl
 Signal #1 Phase : Rtx-CLPesticides Signal #2 Phase: Rtx-CLPesticides2
 Signal #1 Info : 30M x 0.32mm x0.5 Signal #2 Info : 30M x 0.32mm x 0.25µm

	Compound	RT#1	RT#2	Resp#1	Resp#2	ng/ml	ng/ml

System Monitoring Compounds							
4) S	2,4-DCAA	7.213	6.914	460.7E6	242.2E6	514.728	603.732
Target Compounds							
1) T	Dalapon	3.027	2.617	172.7E6	150.2E6	169.885	285.589 #
2) T	3,5-DICHL...	6.430	6.071	178.9E6	82647875	144.470	131.166
3) T	4-Nitroph...	7.054	6.537	50927688	19823458	121.774	85.212 #
5) T	DICAMBA	7.402	7.081	475.3E6	244.3E6	133.477	143.545
6) T	MCPD	7.564	7.169	39024148	17125832	14.653	12.866
7) T	MCPA	7.712	7.380	52367170	55338447	13.676	25.260 #
8) T	DICHLORPROP	8.094	7.708	126.5E6	62871254	141.855	136.864
9) T	2,4-D	8.330	8.010	156.3E6	83040232	151.456	151.042
10) T	Pentachlo...	8.632	8.428	2027.9E6	955.5E6	157.959	169.170
11) T	2,4,5-TP ...	9.181	8.789	757.2E6	396.1E6	147.838	167.108
12) T	2,4,5-T	9.472	9.175	751.0E6	325.0E6	143.411	143.784
13) T	2,4-DB	10.028	9.684	77365792	47826235	91.650	143.947 #
14) T	DINOSEB	11.175	10.005	573.7E6	235.0E6	133.826	139.748
15) T	Picloram	10.991	11.018	47903914	422.0E6	7.568	117.221 #
16) T	DCPA	11.441	10.931	869.5E6	482.6E6	131.216	158.355

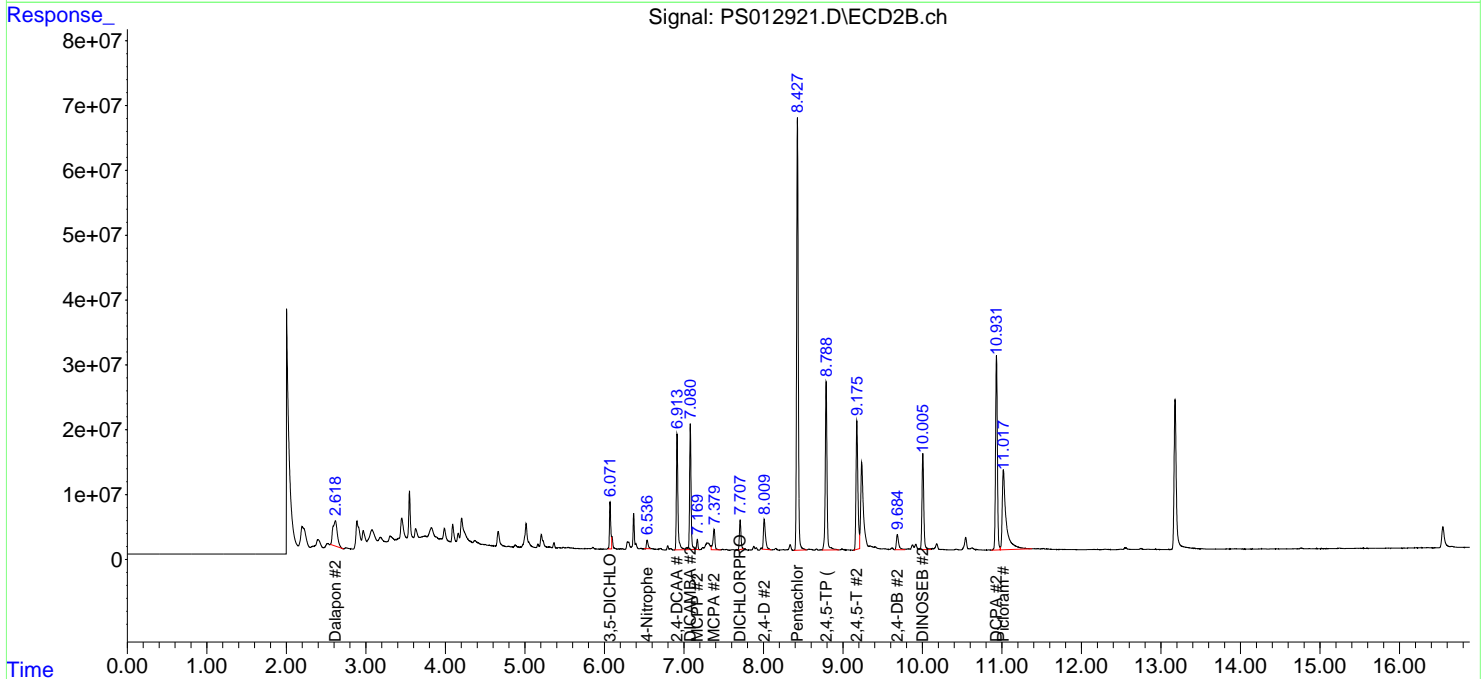
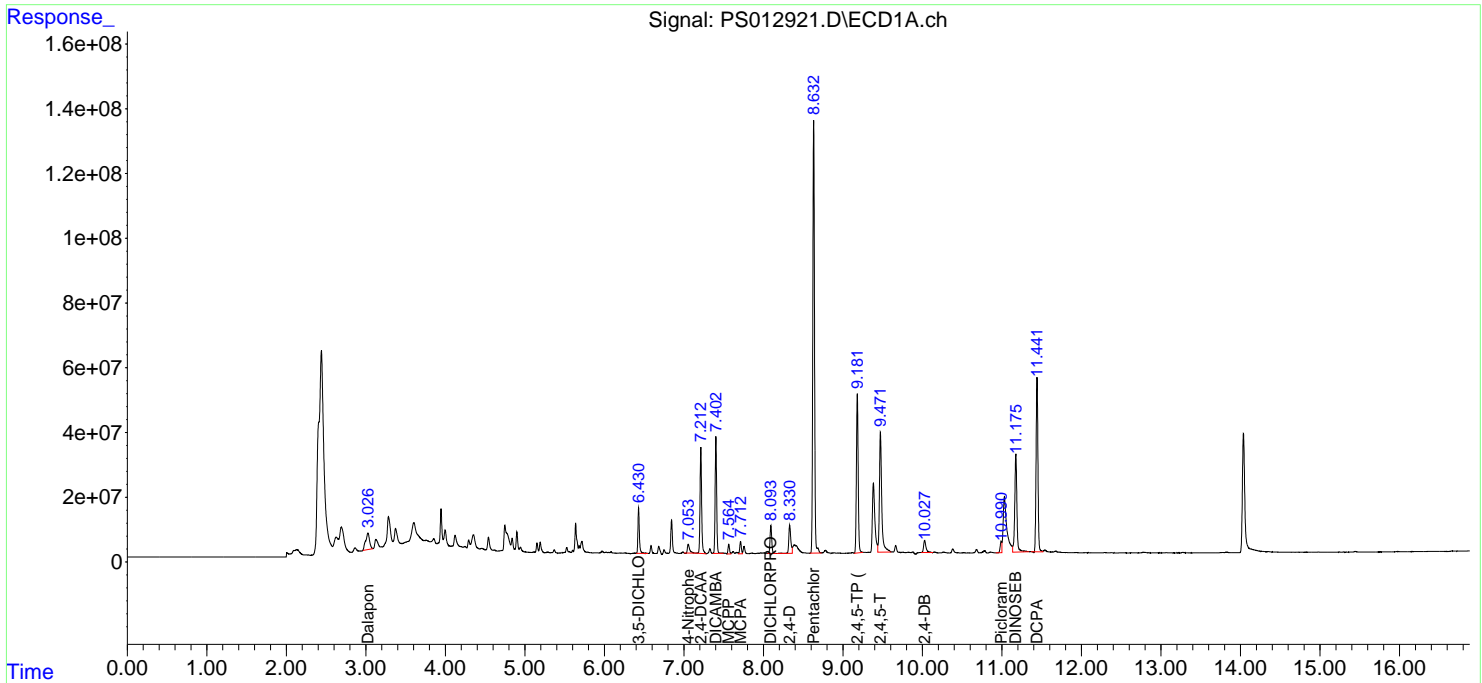
(f)=RT Delta > 1/2 Window (#)=Amounts differ by > 25% (m)=manual int.

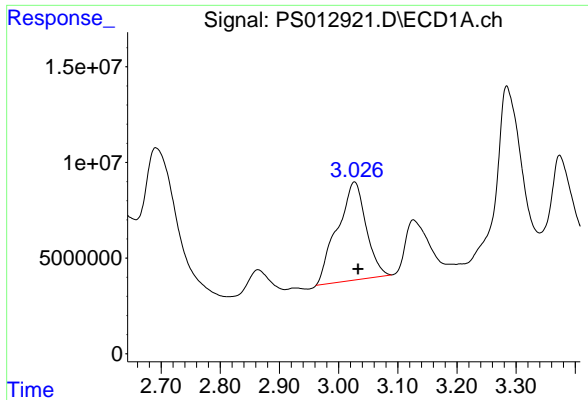
Data Path : Z:\pestpcbsrv\HPCHEM1\ECD_S\Data\PS102020\
 Data File : PS012921.D
 Signal(s) : Signal #1: ECD1A.ch Signal #2: ECD2B.ch
 Acq On : 20 Oct 2020 23:38
 Operator : DD\AJ
 Sample : L4214-07
 Misc : LOD-WATER-
 ALS Vial : 28 Sample Multiplier: 1

Instrument :
 ECD_S
 ClientSampled :

Integration File signal 1: autoint1.e
 Integration File signal 2: autoint2.e
 Quant Time: Oct 21 02:49:36 2020
 Quant Method : Z:\pestpcbsrv\HPCHEM1\ECD_S\Method\PS102020.M
 Quant Title : 8080.M
 QLast Update : Wed Oct 21 02:27:47 2020
 Response via : Initial Calibration
 Integrator: ChemStation

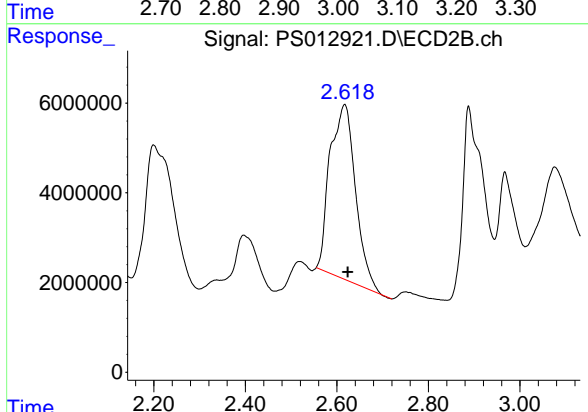
Volume Inj. : 2 µl
 Signal #1 Phase : Rtx-CLPesticides Signal #2 Phase: Rtx-CLPesticides2
 Signal #1 Info : 30M x 0.32mm x0.5 Signal #2 Info : 30M x 0.32mm x 0.25µm



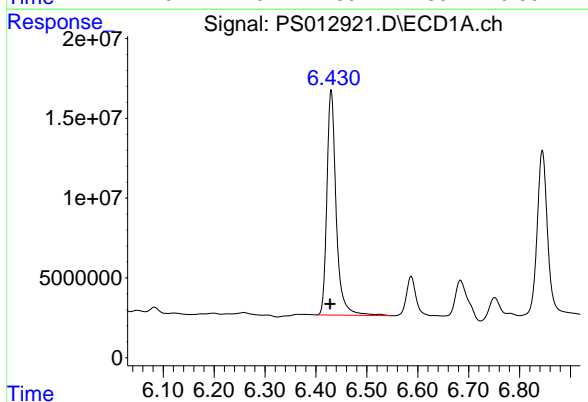


#1 Dalapon
 R.T.: 3.027 min
 Delta R.T.: -0.006 min
 Response: 172701189
 Conc: 169.88 ng/ml

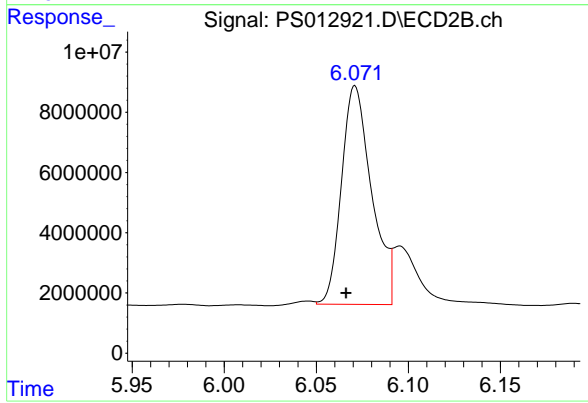
Instrument :
 ECD_S
 ClientSampleId :



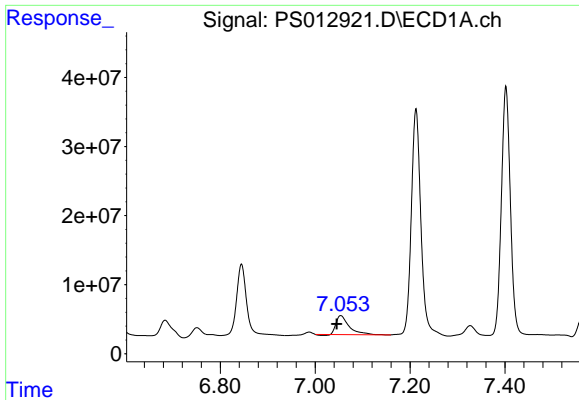
#1 Dalapon
 R.T.: 2.617 min
 Delta R.T.: -0.007 min
 Response: 150184393
 Conc: 285.59 ng/ml



#2 3,5-DICHLOROBENZOIC ACID
 R.T.: 6.430 min
 Delta R.T.: 0.002 min
 Response: 178913808
 Conc: 144.47 ng/ml

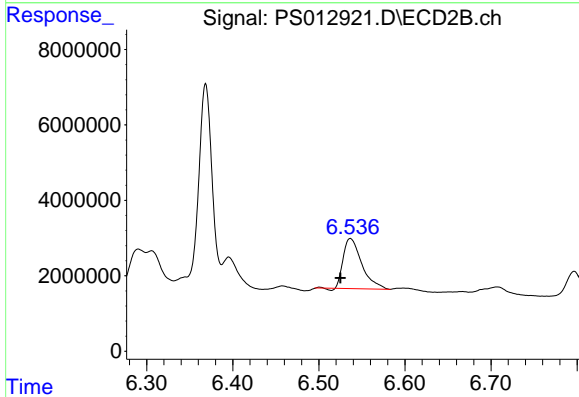


#2 3,5-DICHLOROBENZOIC ACID
 R.T.: 6.071 min
 Delta R.T.: 0.005 min
 Response: 82647875
 Conc: 131.17 ng/ml

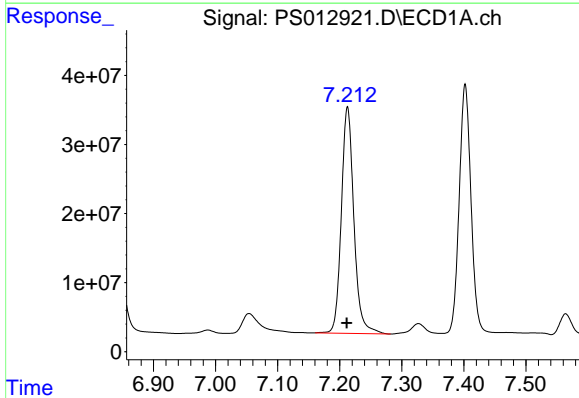


#3 4-Nitrophenol
 R.T.: 7.054 min
 Delta R.T.: 0.008 min
 Response: 50927688
 Conc: 121.77 ng/ml

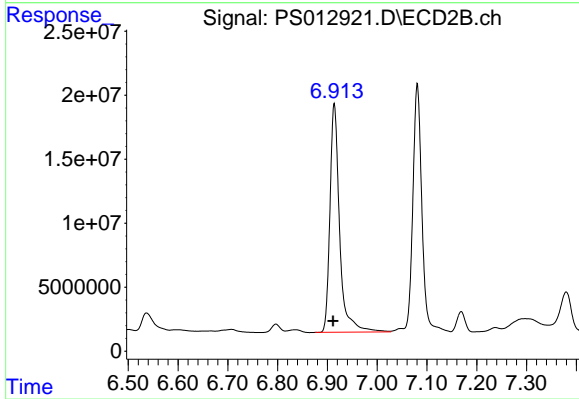
Instrument :
 ECD_S
 ClientSampleId :



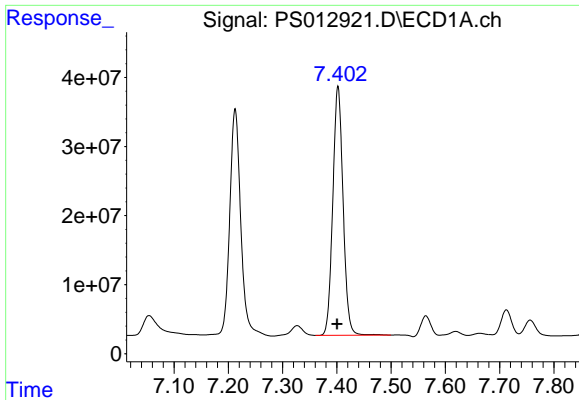
#3 4-Nitrophenol
 R.T.: 6.537 min
 Delta R.T.: 0.012 min
 Response: 19823458
 Conc: 85.21 ng/ml



#4 2,4-DCAA
 R.T.: 7.213 min
 Delta R.T.: 0.001 min
 Response: 460716909
 Conc: 514.73 ng/ml

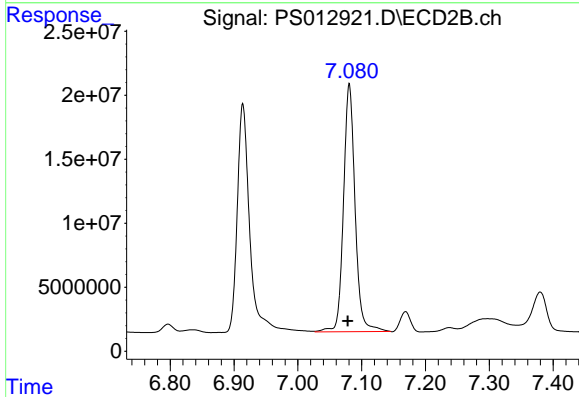


#4 2,4-DCAA
 R.T.: 6.914 min
 Delta R.T.: 0.002 min
 Response: 242248536
 Conc: 603.73 ng/ml

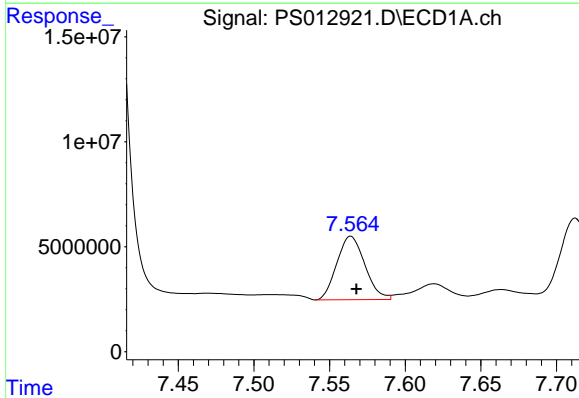


#5 DICAMBA
 R.T.: 7.402 min
 Delta R.T.: 0.001 min
 Response: 475277432
 Conc: 133.48 ng/ml

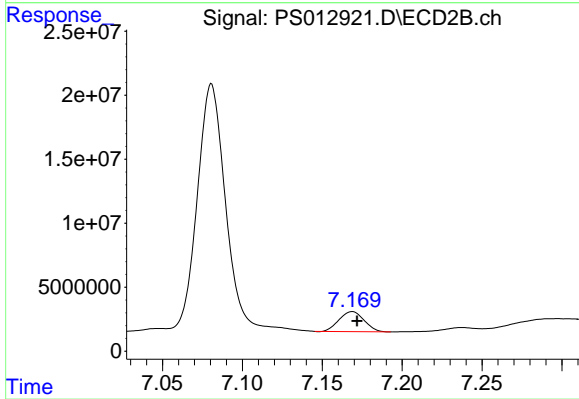
Instrument :
 ECD_S
 ClientSampleId :



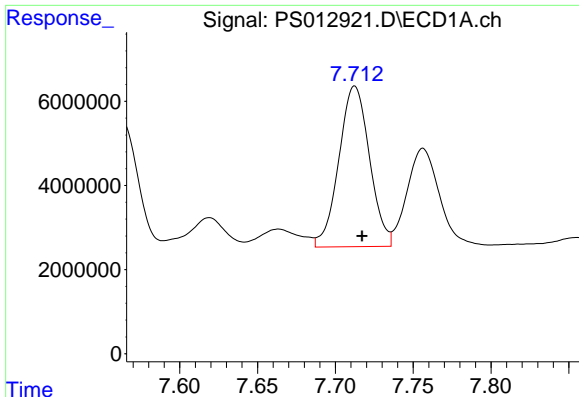
#5 DICAMBA
 R.T.: 7.081 min
 Delta R.T.: 0.002 min
 Response: 244290811
 Conc: 143.54 ng/ml



#6 MCPP
 R.T.: 7.564 min
 Delta R.T.: -0.004 min
 Response: 39024148
 Conc: 14.65 ug/ml



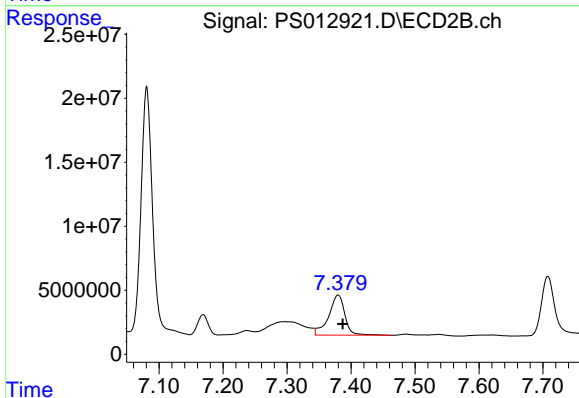
#6 MCPP
 R.T.: 7.169 min
 Delta R.T.: -0.003 min
 Response: 17125832
 Conc: 12.87 ug/ml



#7 MCPA

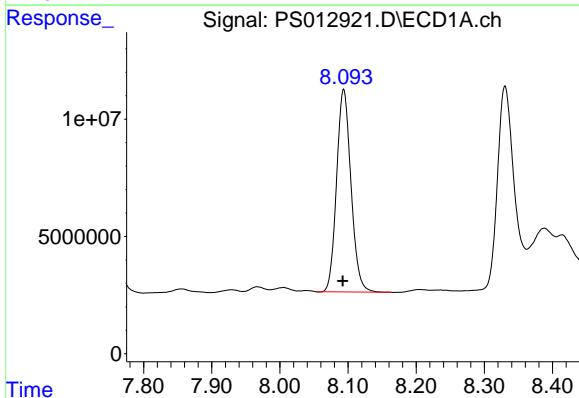
R.T.: 7.712 min
 Delta R.T.: -0.005 min
 Response: 52367170
 Conc: 13.68 ug/ml

Instrument :
 ECD_S
 ClientSampled :



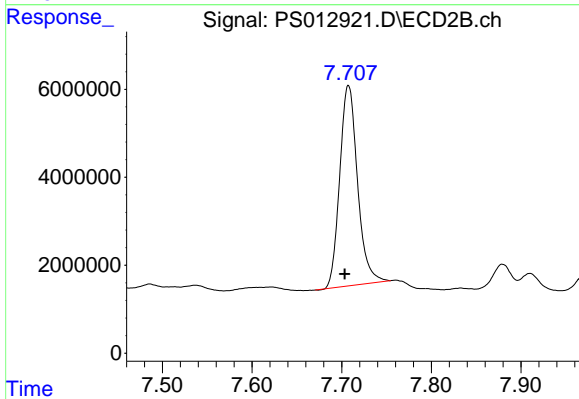
#7 MCPA

R.T.: 7.380 min
 Delta R.T.: -0.007 min
 Response: 55338447
 Conc: 25.26 ug/ml



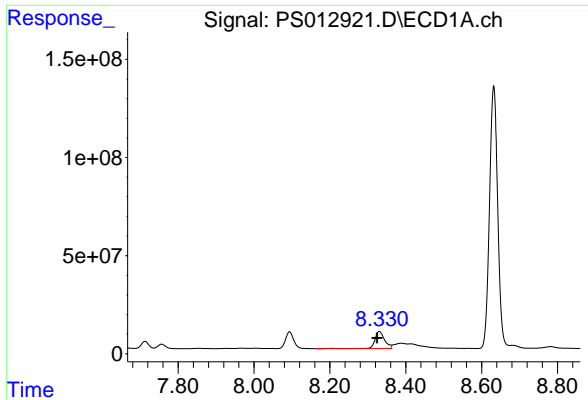
#8 DICHLORPROP

R.T.: 8.094 min
 Delta R.T.: 0.001 min
 Response: 126516081
 Conc: 141.85 ng/ml



#8 DICHLORPROP

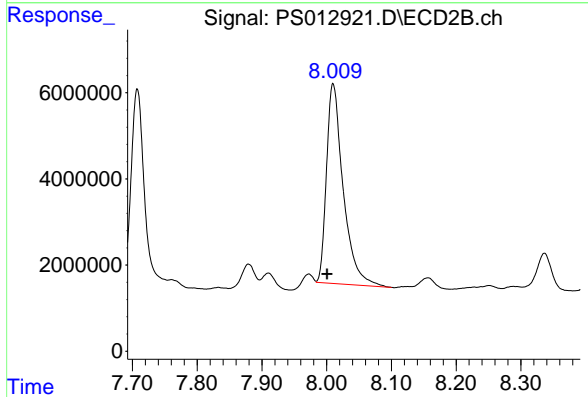
R.T.: 7.708 min
 Delta R.T.: 0.004 min
 Response: 62871254
 Conc: 136.86 ng/ml



#9 2,4-D

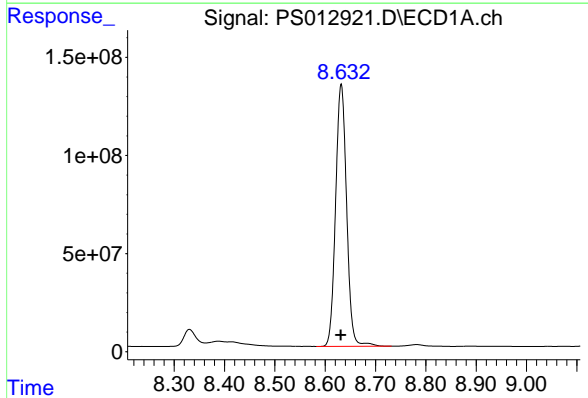
R.T.: 8.330 min
Delta R.T.: 0.006 min
Response: 156273108
Conc: 151.46 ng/ml

Instrument :
ECD_S
ClientSampled :



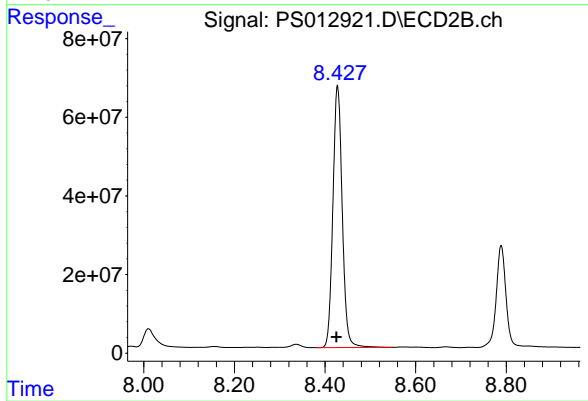
#9 2,4-D

R.T.: 8.010 min
Delta R.T.: 0.009 min
Response: 83040232
Conc: 151.04 ng/ml



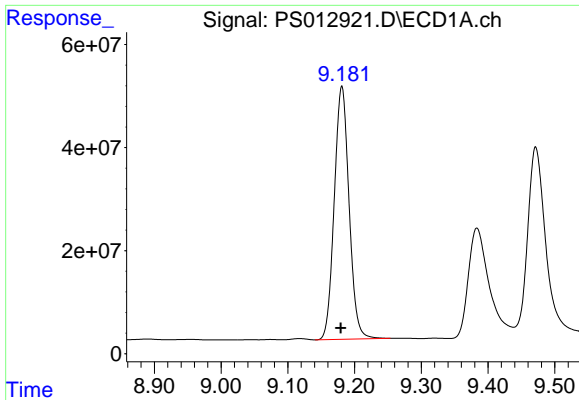
#10 Pentachlorophenol

R.T.: 8.632 min
Delta R.T.: 0.000 min
Response: 2027895408
Conc: 157.96 ng/ml



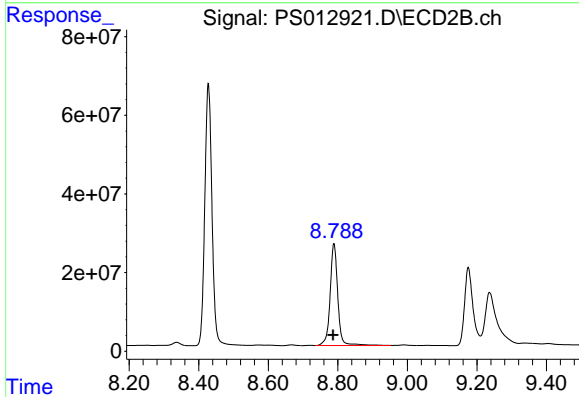
#10 Pentachlorophenol

R.T.: 8.428 min
Delta R.T.: 0.002 min
Response: 955514594
Conc: 169.17 ng/ml

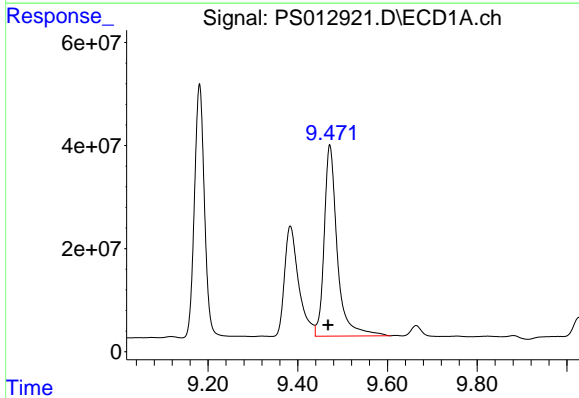


#11 2,4,5-TP (SILVEX)
 R.T.: 9.181 min
 Delta R.T.: 0.001 min
 Response: 757208316
 Conc: 147.84 ng/ml

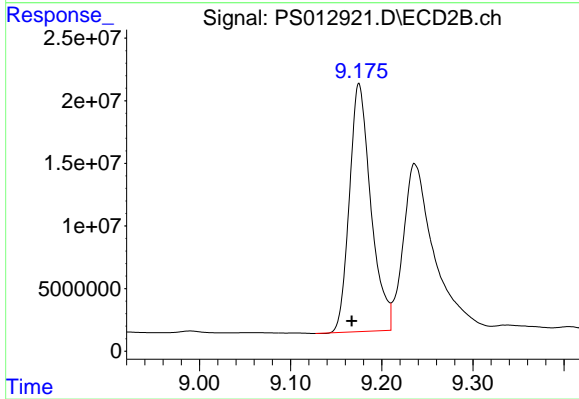
Instrument :
 ECD_S
 ClientSampleId :



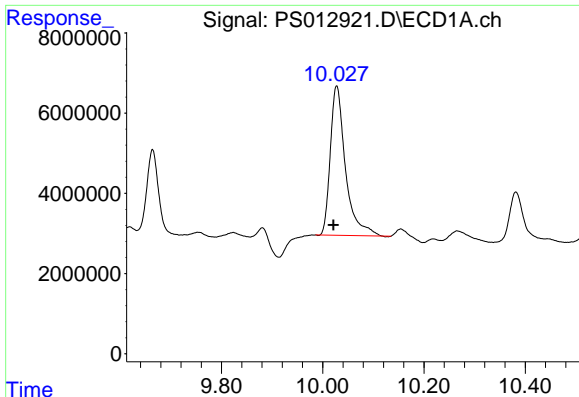
#11 2,4,5-TP (SILVEX)
 R.T.: 8.789 min
 Delta R.T.: 0.003 min
 Response: 396148120
 Conc: 167.11 ng/ml



#12 2,4,5-T
 R.T.: 9.472 min
 Delta R.T.: 0.004 min
 Response: 750974506
 Conc: 143.41 ng/ml



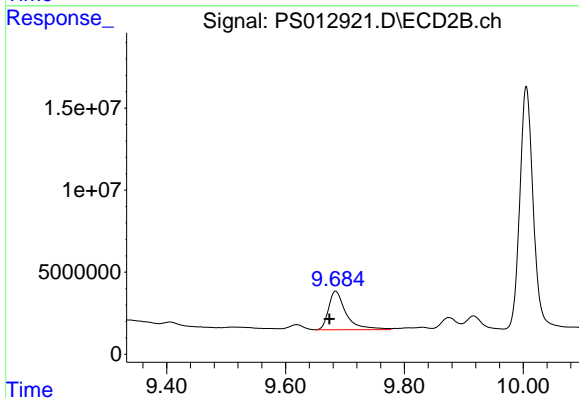
#12 2,4,5-T
 R.T.: 9.175 min
 Delta R.T.: 0.008 min
 Response: 324987497
 Conc: 143.78 ng/ml



#13 2,4-DB

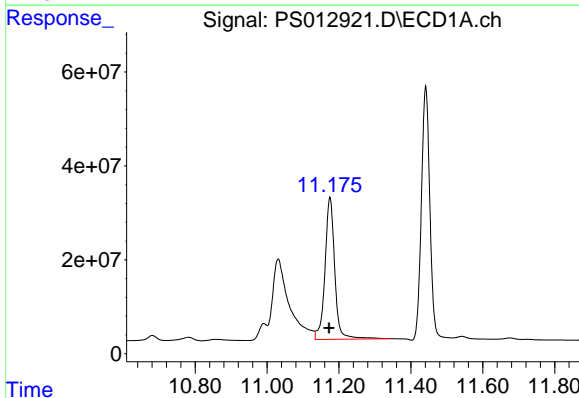
R.T.: 10.028 min
Delta R.T.: 0.007 min
Response: 77365792
Conc: 91.65 ng/ml

Instrument :
ECD_S
ClientSampled :



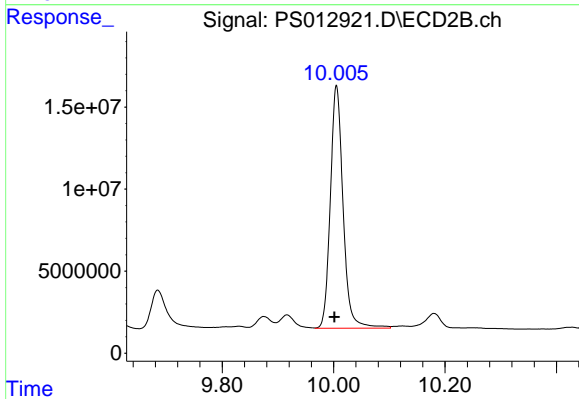
#13 2,4-DB

R.T.: 9.684 min
Delta R.T.: 0.010 min
Response: 47826235
Conc: 143.95 ng/ml



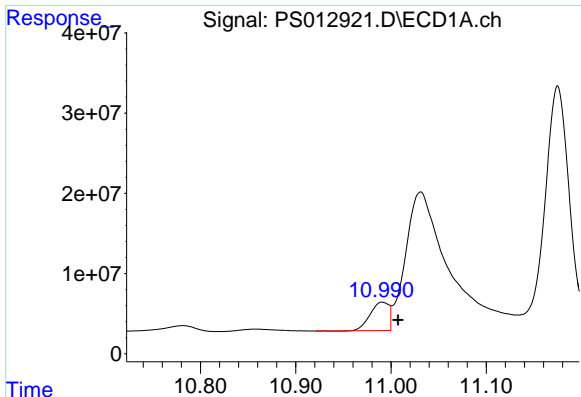
#14 DINOSEB

R.T.: 11.175 min
Delta R.T.: 0.002 min
Response: 573746336
Conc: 133.83 ng/ml



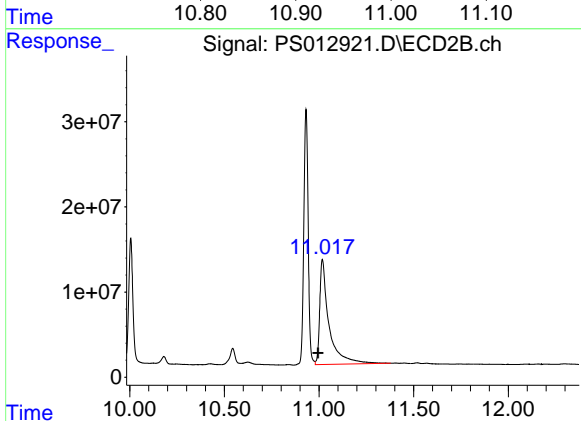
#14 DINOSEB

R.T.: 10.005 min
Delta R.T.: 0.004 min
Response: 235002676
Conc: 139.75 ng/ml

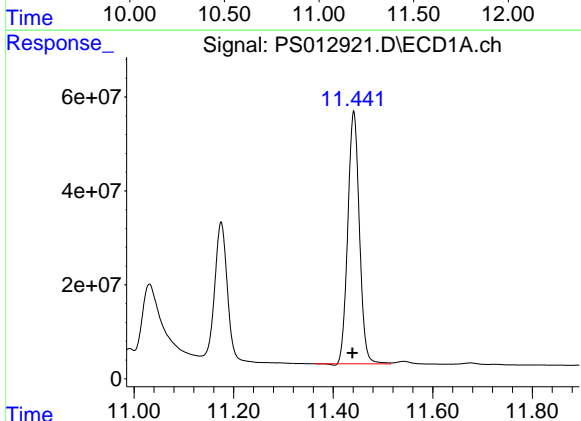


#15 Picloram
 R.T.: 10.991 min
 Delta R.T.: -0.016 min
 Response: 47903914
 Conc: 7.57 ng/ml

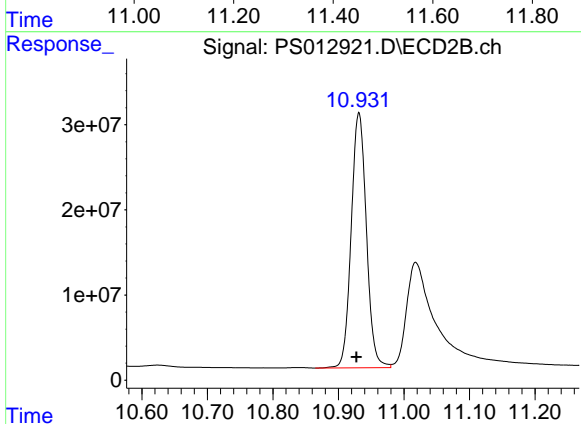
Instrument :
 ECD_S
 ClientSampleId :



#15 Picloram
 R.T.: 11.018 min
 Delta R.T.: 0.023 min
 Response: 421971268
 Conc: 117.22 ng/ml



#16 DCPA
 R.T.: 11.441 min
 Delta R.T.: 0.003 min
 Response: 869481934
 Conc: 131.22 ng/ml



#16 DCPA
 R.T.: 10.931 min
 Delta R.T.: 0.004 min
 Response: 482568293
 Conc: 158.35 ng/ml