

Data Path : Z:\pestpcbsrv\HPCHEM1\ECD\_S\Data\PS102020\  
 Data File : PS012924.D  
 Signal(s) : Signal #1: ECD1A.ch Signal #2: ECD2B.ch  
 Acq On : 21 Oct 2020 00:47  
 Operator : DD\AJ  
 Sample : I.BLK  
 Misc :  
 ALS Vial : 19 Sample Multiplier: 1

Instrument :  
 ECD\_S  
 ClientSampleId :

Integration File signal 1: autoint1.e  
 Integration File signal 2: autoint2.e  
 Quant Time: Oct 21 02:50:35 2020  
 Quant Method : Z:\pestpcbsrv\HPCHEM1\ECD\_S\Method\PS102020.M  
 Quant Title : 8080.M  
 QLast Update : Wed Oct 21 02:27:47 2020  
 Response via : Initial Calibration  
 Integrator: ChemStation

Volume Inj. : 2 µl  
 Signal #1 Phase : Rtx-CLPesticides Signal #2 Phase: Rtx-CLPesticides2  
 Signal #1 Info : 30M x 0.32mm x0.5 Signal #2 Info : 30M x 0.32mm x 0.25µm

Compound	RT#1	RT#2	Resp#1	Resp#2	ng/ml	ng/ml
-----						
System Monitoring Compounds						
4) S 2,4-DCAA	7.216	6.918	382.5E6	212.4E6	427.291	529.346
Target Compounds						
9) T 2,4-D	8.391	0.000	103.6E6	0	100.369	N.D. #
-----						

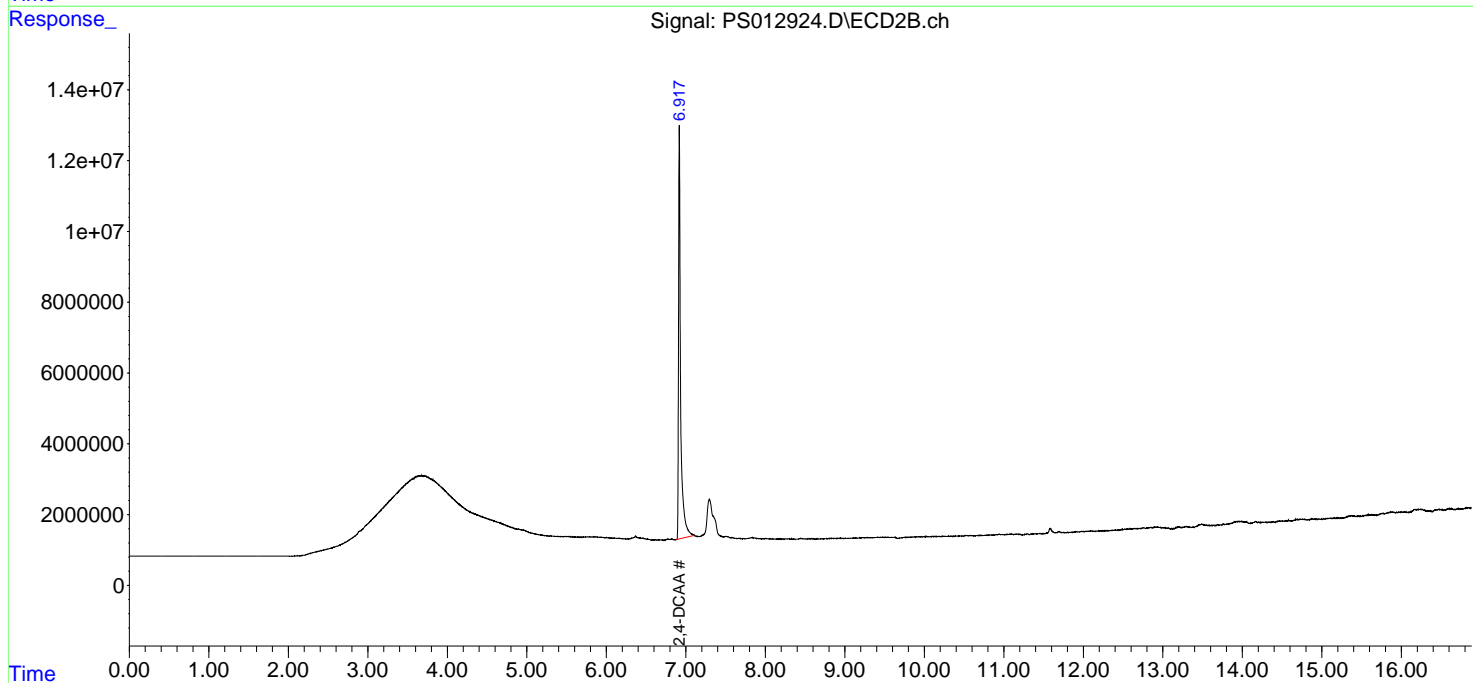
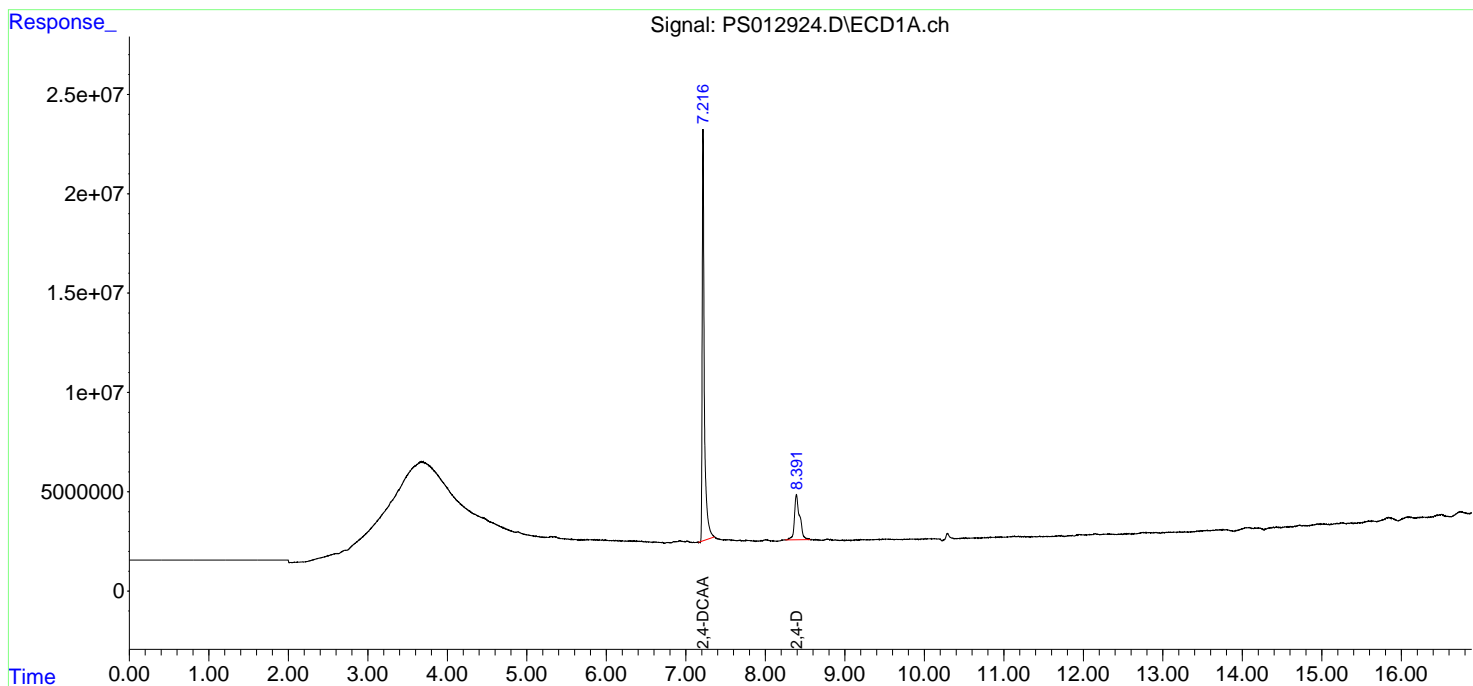
(f)=RT Delta > 1/2 Window (#)=Amounts differ by > 25% (m)=manual int.

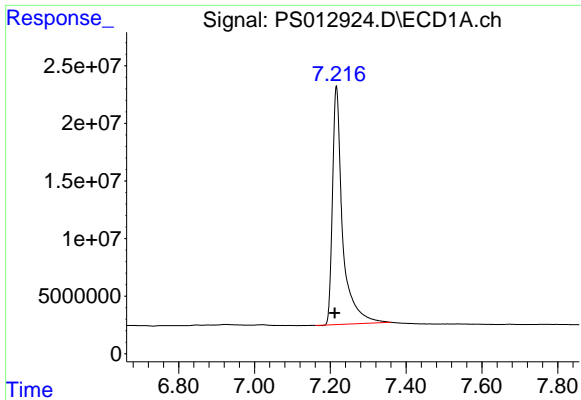
Data Path : Z:\pestpcbsrv\HPCHEM1\ECD\_S\Data\PS102020\  
 Data File : PS012924.D  
 Signal(s) : Signal #1: ECD1A.ch Signal #2: ECD2B.ch  
 Acq On : 21 Oct 2020 00:47  
 Operator : DD\AJ  
 Sample : I.BLK  
 Misc :  
 ALS Vial : 19 Sample Multiplier: 1

Instrument :  
 ECD\_S  
 ClientSampleId :

Integration File signal 1: autoint1.e  
 Integration File signal 2: autoint2.e  
 Quant Time: Oct 21 02:50:35 2020  
 Quant Method : Z:\pestpcbsrv\HPCHEM1\ECD\_S\Method\PS102020.M  
 Quant Title : 8080.M  
 QLast Update : Wed Oct 21 02:27:47 2020  
 Response via : Initial Calibration  
 Integrator: ChemStation

Volume Inj. : 2 µl  
 Signal #1 Phase : Rtx-CLPesticides Signal #2 Phase: Rtx-CLPesticides2  
 Signal #1 Info : 30M x 0.32mm x0.5 Signal #2 Info : 30M x 0.32mm x 0.25µm

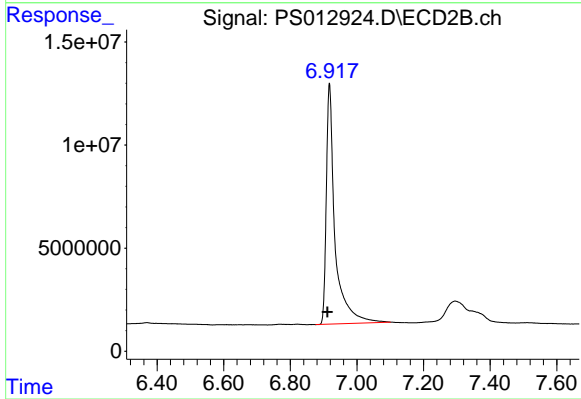




#4 2,4-DCAA

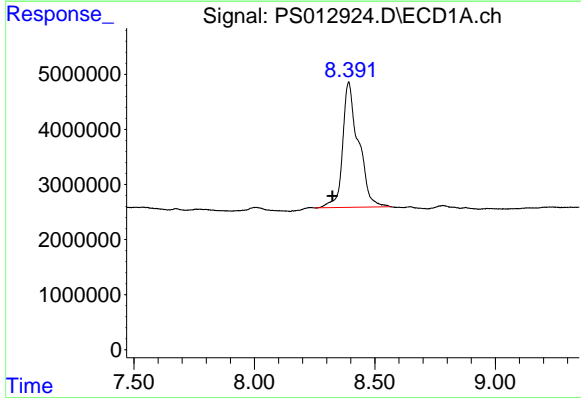
R.T.: 7.216 min  
 Delta R.T.: 0.005 min  
 Response: 382454688  
 Conc: 427.29 ng/ml

Instrument :  
 ECD\_S  
 ClientSampleId :



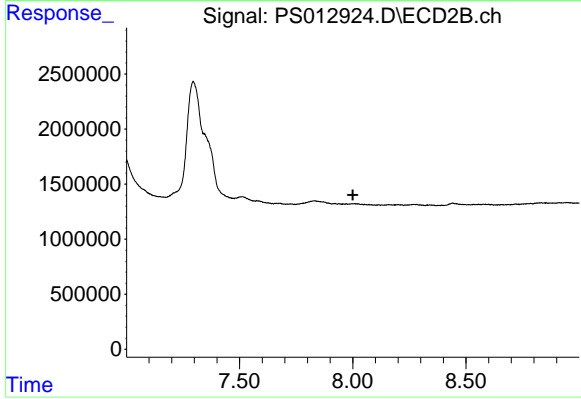
#4 2,4-DCAA

R.T.: 6.918 min  
 Delta R.T.: 0.006 min  
 Response: 212400991  
 Conc: 529.35 ng/ml



#9 2,4-D

R.T.: 8.391 min  
 Delta R.T.: 0.067 min  
 Response: 103561164  
 Conc: 100.37 ng/ml



#9 2,4-D

R.T.: 0.000 min  
 Exp R.T. : 8.001 min  
 Response: 0  
 Conc: N.D.