

Data Path : Z:\pestpcbsrv\HPCHEM1\ECD_S\Data\PS102020\
 Data File : PS012928.D
 Signal(s) : Signal #1: ECD1A.ch Signal #2: ECD2B.ch
 Acq On : 21 Oct 2020 02:19
 Operator : DD\AJ
 Sample : PB132495BL
 Misc :
 ALS Vial : 33 Sample Multiplier: 1

Instrument :
 ECD_S
 ClientSampleId :

Integration File signal 1: autoint1.e
 Integration File signal 2: autoint2.e
 Quant Time: Oct 21 04:35:03 2020
 Quant Method : Z:\pestpcbsrv\HPCHEM1\ECD_S\Method\PS102020.M
 Quant Title : 8080.M
 QLast Update : Wed Oct 21 02:27:47 2020
 Response via : Initial Calibration
 Integrator: ChemStation

Volume Inj. : 2 µl
 Signal #1 Phase : Rtx-CLPesticides Signal #2 Phase: Rtx-CLPesticides2
 Signal #1 Info : 30M x 0.32mm x0.5 Signal #2 Info : 30M x 0.32mm x 0.25µm

	Compound	RT#1	RT#2	Resp#1	Resp#2	ng/ml	ng/ml

System Monitoring Compounds							
4) S	2,4-DCAA	7.213	6.915	453.1E6	235.0E6	506.244	585.775
Target Compounds							
1) T	Dalapon	2.993	2.589	73043491	118.5E6	71.852	225.386 #
2) T	3,5-DICHL...	0.000	6.097	0	17698378	N.D.	28.088
3) T	4-Nitroph...	6.987	0.000	5657635	0	13.528	N.D. #
5) T	DICAMBA	0.000	7.047	0	3999151	N.D.	2.350
6) T	MCP P	7.564	0.000	6077540	0	2.282	N.D. #
7) T	MCPA	7.756	7.372	33615694	28704970	8.779	13.103 #
8) T	DICHLORPROP	0.000	7.763	0	3892759	N.D.	8.474
9) T	2,4-D	8.390	0.000	100.8E6	0	97.689	N.D. #
10) T	Pentachlo...	8.685	0.000	14664069	0	1.142	N.D. #
11) T	2,4,5-TP ...	0.000	8.764	0	15327538	N.D.	6.466
12) T	2,4,5-T	9.485	0.000	8950139	0	1.709	N.D. #
15) T	Picloram	10.992	11.044	7922382	10409195	1.252	2.892 #
16) T	DCPA	11.450	10.935	-6321714	10350615	N.D.	3.397

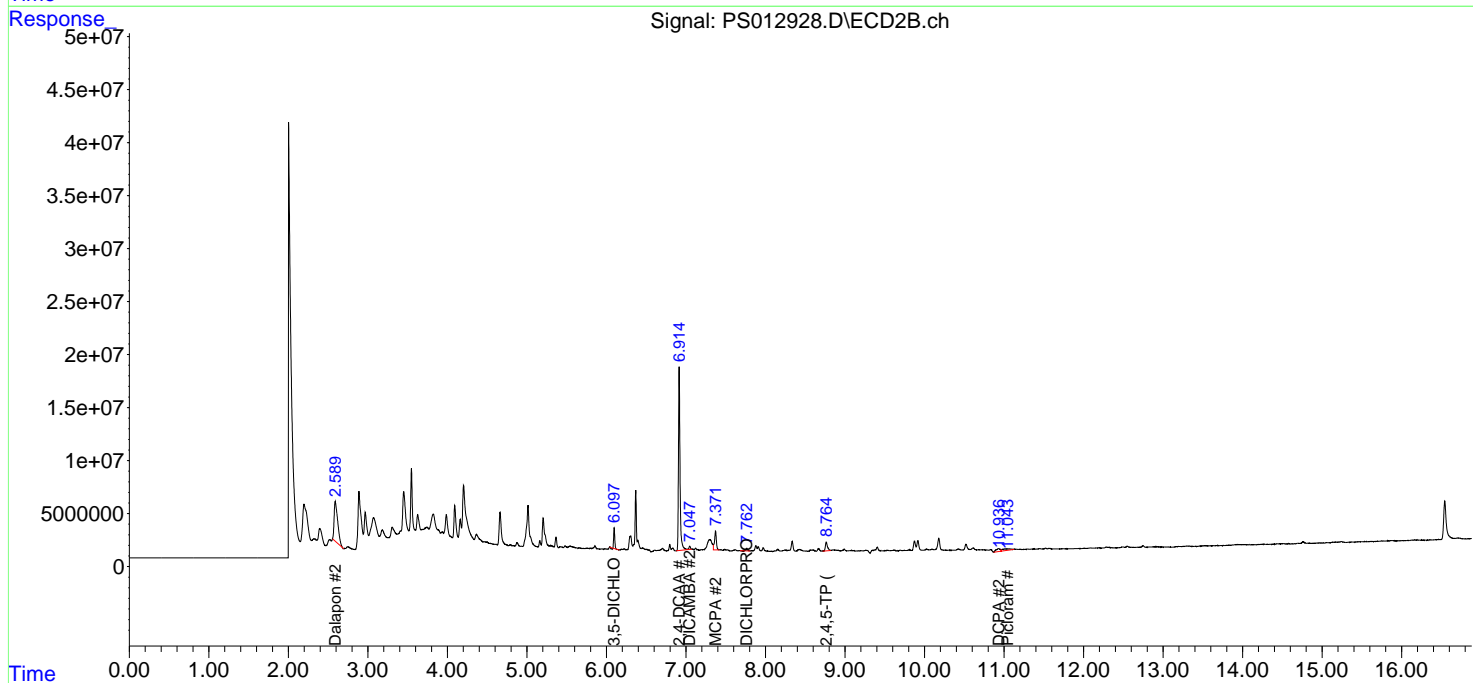
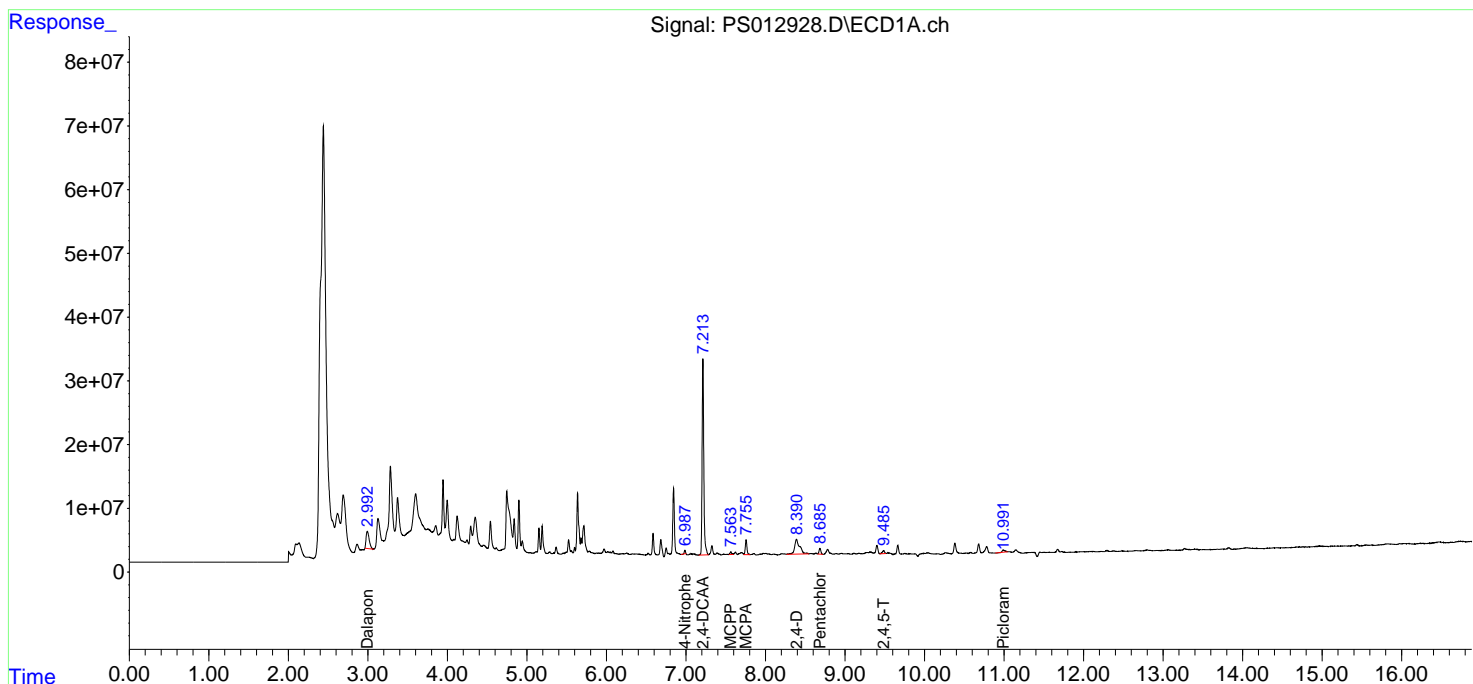
(f)=RT Delta > 1/2 Window (#)=Amounts differ by > 25% (m)=manual int.

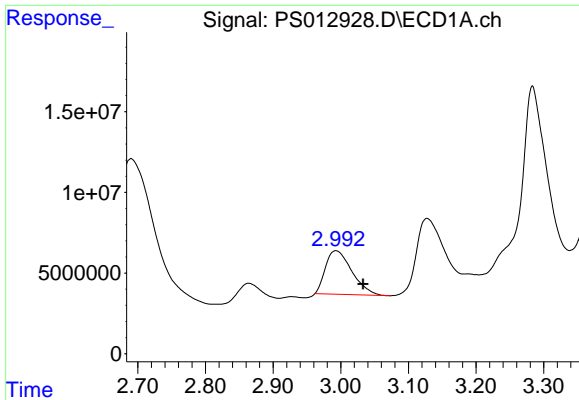
Data Path : Z:\pestpcbsrv\HPCHEM1\ECD_S\Data\PS102020\
 Data File : PS012928.D
 Signal(s) : Signal #1: ECD1A.ch Signal #2: ECD2B.ch
 Acq On : 21 Oct 2020 02:19
 Operator : DD\AJ
 Sample : PB132495BL
 Misc :
 ALS Vial : 33 Sample Multiplier: 1

Instrument :
 ECD_S
 ClientSampled :

Integration File signal 1: autoint1.e
 Integration File signal 2: autoint2.e
 Quant Time: Oct 21 04:35:03 2020
 Quant Method : Z:\pestpcbsrv\HPCHEM1\ECD_S\Method\PS102020.M
 Quant Title : 8080.M
 QLast Update : Wed Oct 21 02:27:47 2020
 Response via : Initial Calibration
 Integrator: ChemStation

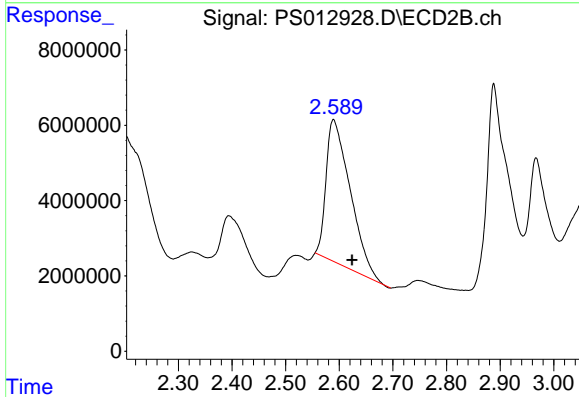
Volume Inj. : 2 µl
 Signal #1 Phase : Rtx-CLPesticides Signal #2 Phase: Rtx-CLPesticides2
 Signal #1 Info : 30M x 0.32mm x 0.5 Signal #2 Info : 30M x 0.32mm x 0.25µm



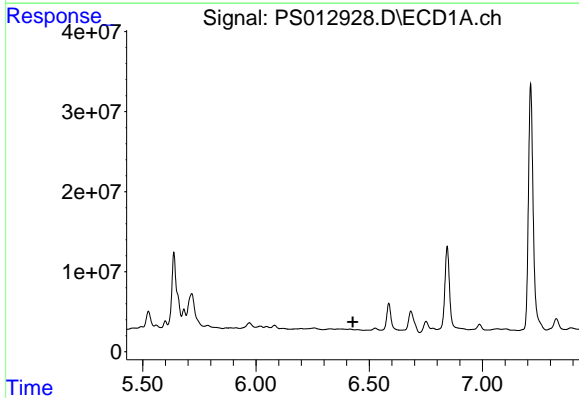


#1 Dalapon
 R.T.: 2.993 min
 Delta R.T.: -0.040 min
 Response: 73043491
 Conc: 71.85 ng/ml

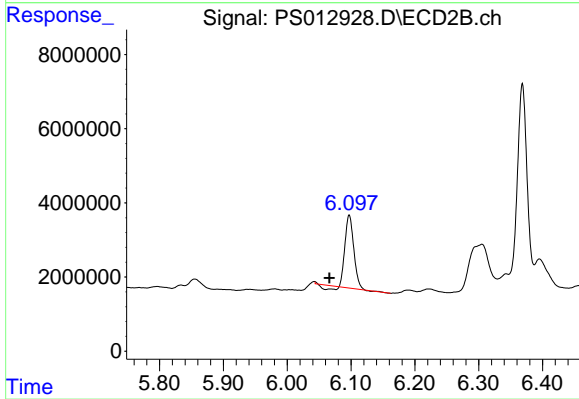
Instrument :
 ECD_S
 ClientSampleId :



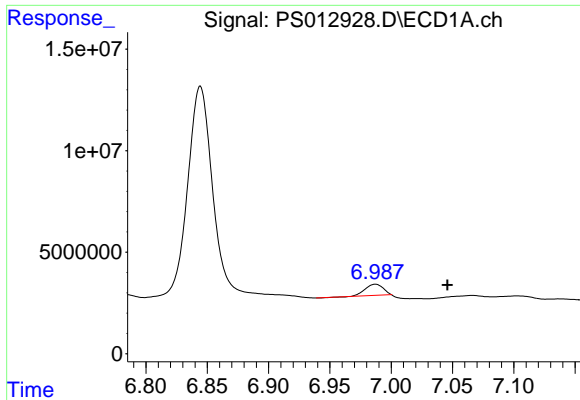
#1 Dalapon
 R.T.: 2.589 min
 Delta R.T.: -0.034 min
 Response: 118525280
 Conc: 225.39 ng/ml



#2 3,5-DICHLOROBENZOIC ACID
 R.T.: 0.000 min
 Exp R.T. : 6.428 min
 Response: 0
 Conc: N.D.



#2 3,5-DICHLOROBENZOIC ACID
 R.T.: 6.097 min
 Delta R.T.: 0.031 min
 Response: 17698378
 Conc: 28.09 ng/ml



#3 4-Nitrophenol

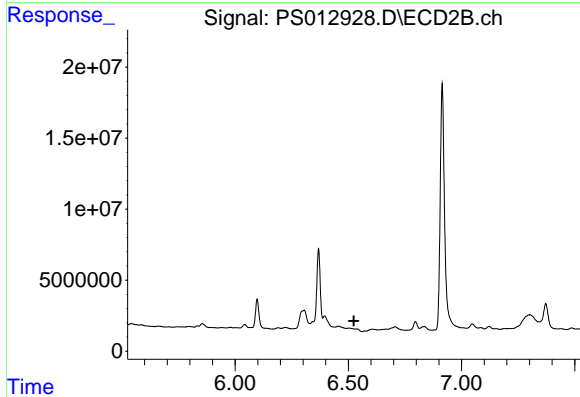
R.T.: 6.987 min

Delta R.T.: -0.059 min

Response: 5657635

Conc: 13.53 ng/ml

Instrument :
ECD_S
ClientSampled :



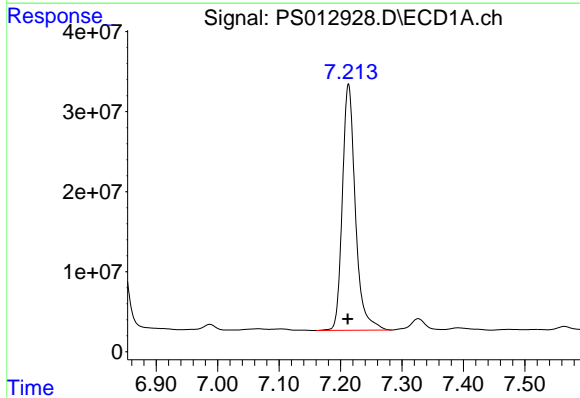
#3 4-Nitrophenol

R.T.: 0.000 min

Exp R.T. : 6.525 min

Response: 0

Conc: N.D.



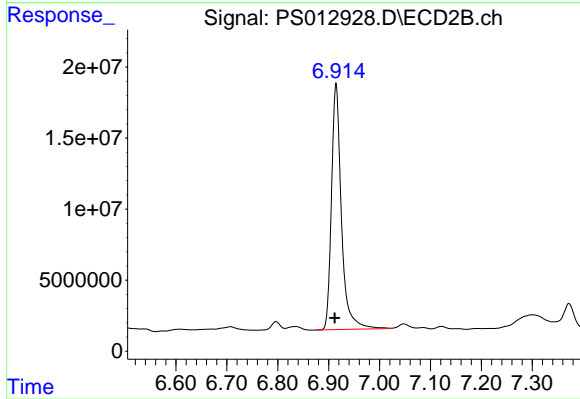
#4 2,4-DCAA

R.T.: 7.213 min

Delta R.T.: 0.001 min

Response: 453123263

Conc: 506.24 ng/ml



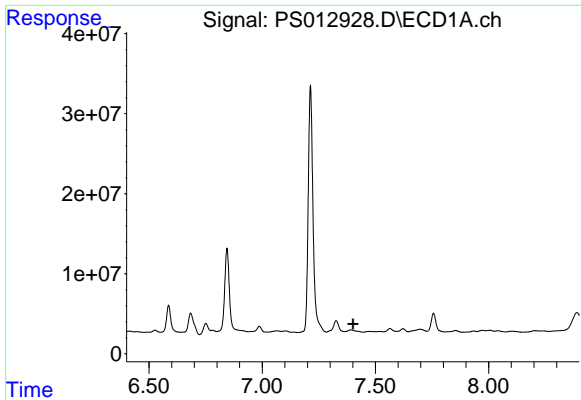
#4 2,4-DCAA

R.T.: 6.915 min

Delta R.T.: 0.003 min

Response: 235043032

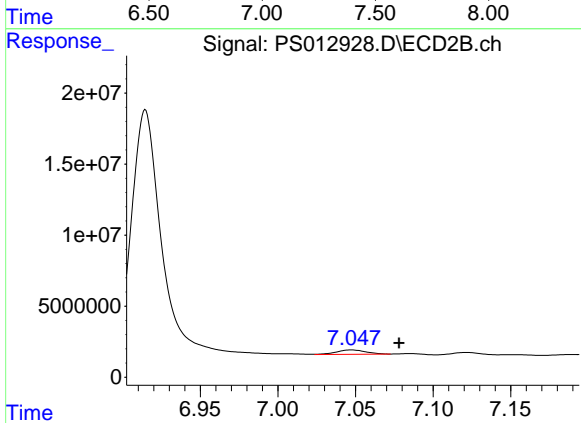
Conc: 585.77 ng/ml



#5 DICAMBA

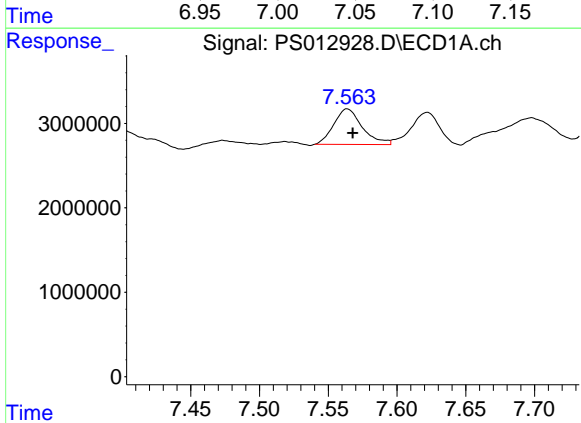
R.T.: 0.000 min
 Exp R.T.: 7.401 min
 Response: 0
 Conc: N.D.

Instrument :
 ECD_S
 ClientSampleId :



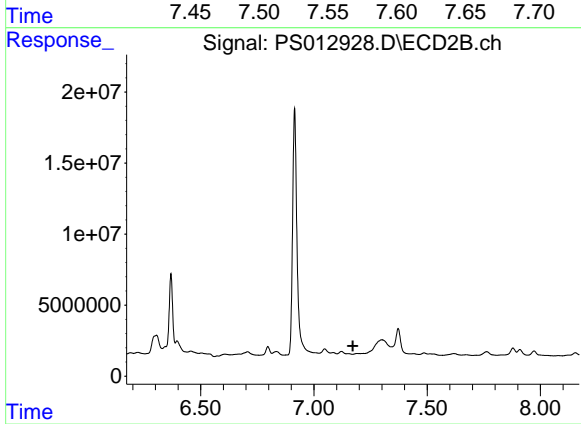
#5 DICAMBA

R.T.: 7.047 min
 Delta R.T.: -0.031 min
 Response: 3999151
 Conc: 2.35 ng/ml



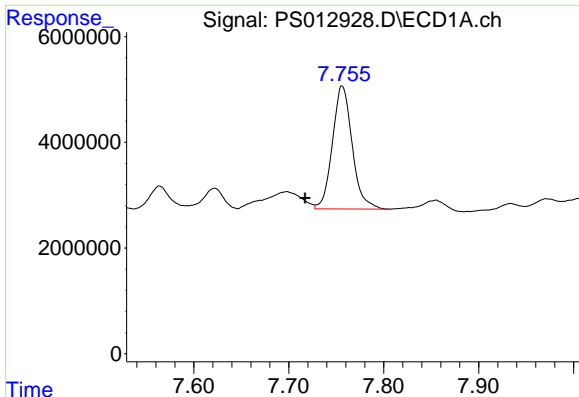
#6 MCP

R.T.: 7.564 min
 Delta R.T.: -0.004 min
 Response: 6077540
 Conc: 2.28 ug/ml



#6 MCP

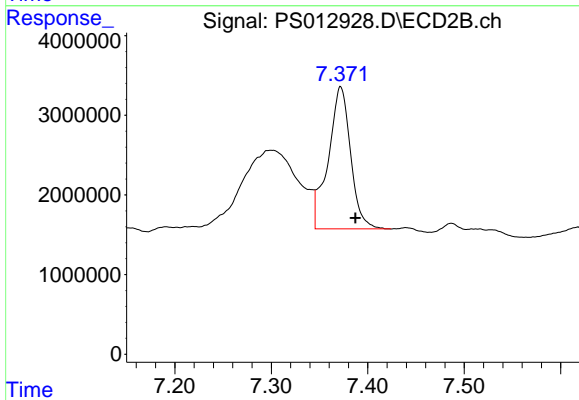
R.T.: 0.000 min
 Exp R.T.: 7.172 min
 Response: 0
 Conc: N.D.



#7 MCPA

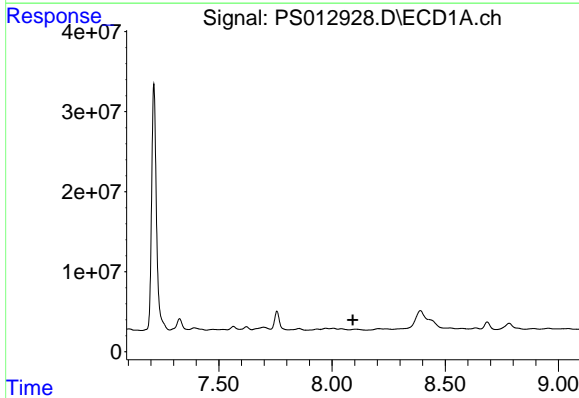
R.T.: 7.756 min
 Delta R.T.: 0.039 min
 Response: 33615694
 Conc: 8.78 ug/ml

Instrument :
 ECD_S
 ClientSampled :



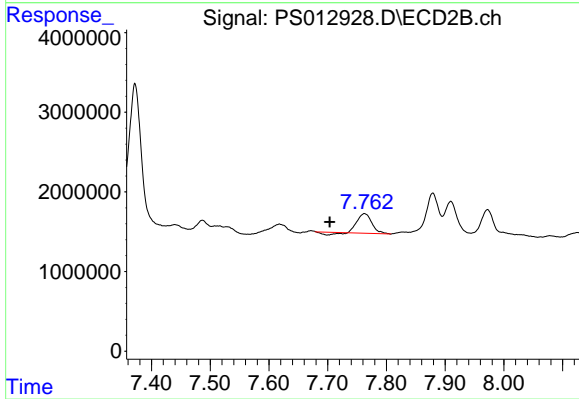
#7 MCPA

R.T.: 7.372 min
 Delta R.T.: -0.015 min
 Response: 28704970
 Conc: 13.10 ug/ml



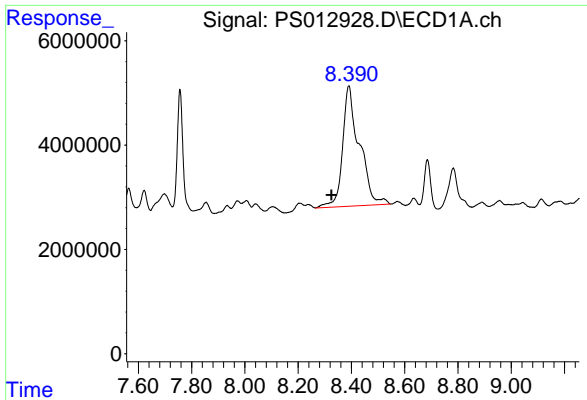
#8 DICHLORPROP

R.T.: 0.000 min
 Exp R.T. : 8.092 min
 Response: 0
 Conc: N.D.



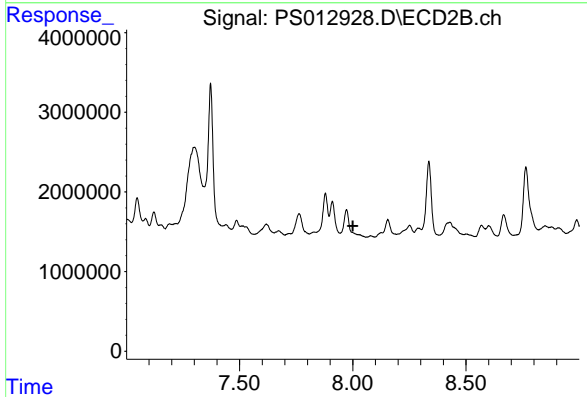
#8 DICHLORPROP

R.T.: 7.763 min
 Delta R.T.: 0.059 min
 Response: 3892759
 Conc: 8.47 ng/ml

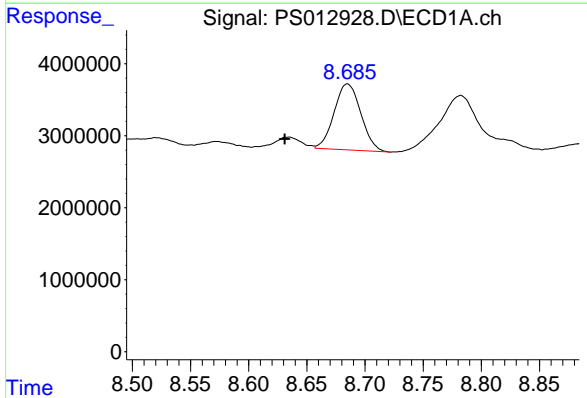


#9 2,4-D
 R.T.: 8.390 min
 Delta R.T.: 0.066 min
 Response: 100795790
 Conc: 97.69 ng/ml

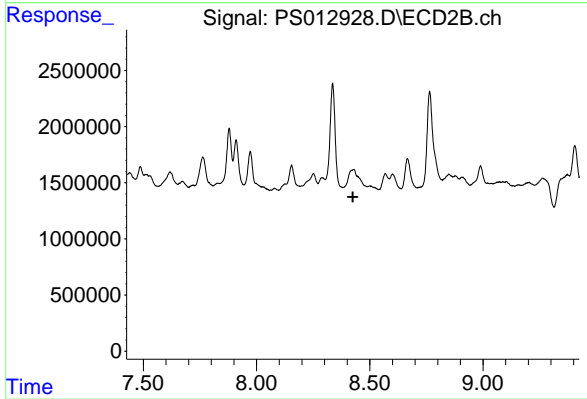
Instrument :
 ECD_S
 ClientSampled :



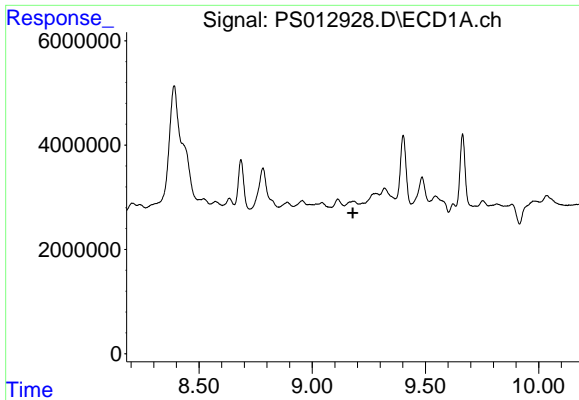
#9 2,4-D
 R.T.: 0.000 min
 Exp R.T. : 8.001 min
 Response: 0
 Conc: N.D.



#10 Pentachlorophenol
 R.T.: 8.685 min
 Delta R.T.: 0.054 min
 Response: 14664069
 Conc: 1.14 ng/ml

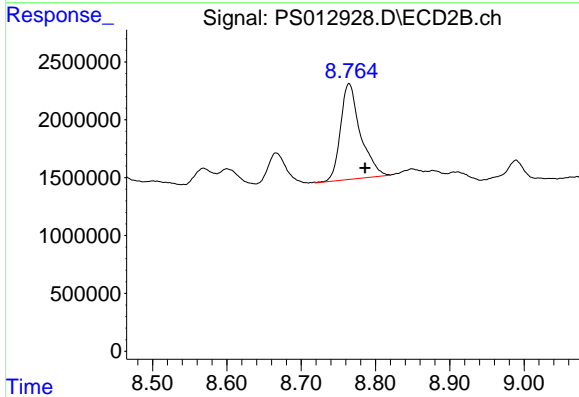


#10 Pentachlorophenol
 R.T.: 0.000 min
 Exp R.T. : 8.425 min
 Response: 0
 Conc: N.D.

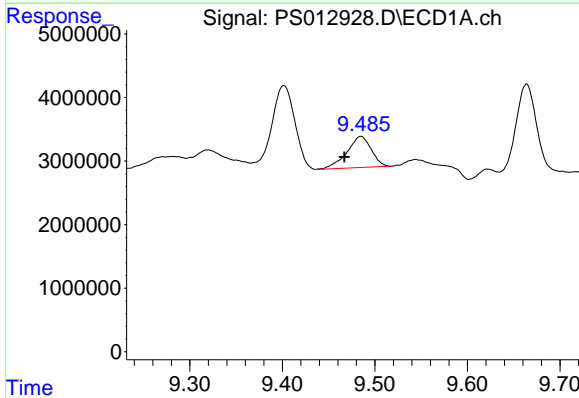


#11 2,4,5-TP (SILVEX)
 R.T.: 0.000 min
 Exp R.T.: 9.180 min
 Response: 0
 Conc: N.D.

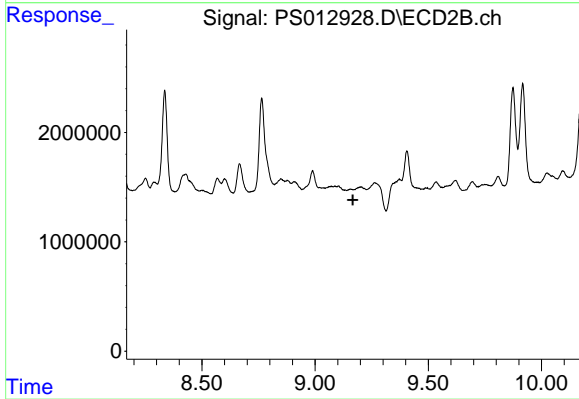
Instrument :
 ECD_S
 ClientSampleId :



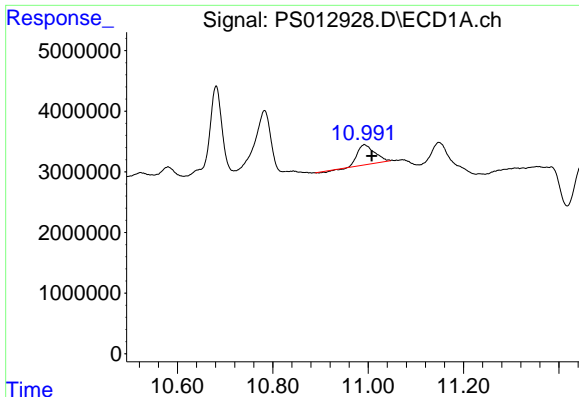
#11 2,4,5-TP (SILVEX)
 R.T.: 8.764 min
 Delta R.T.: -0.022 min
 Response: 15327538
 Conc: 6.47 ng/ml



#12 2,4,5-T
 R.T.: 9.485 min
 Delta R.T.: 0.018 min
 Response: 8950139
 Conc: 1.71 ng/ml



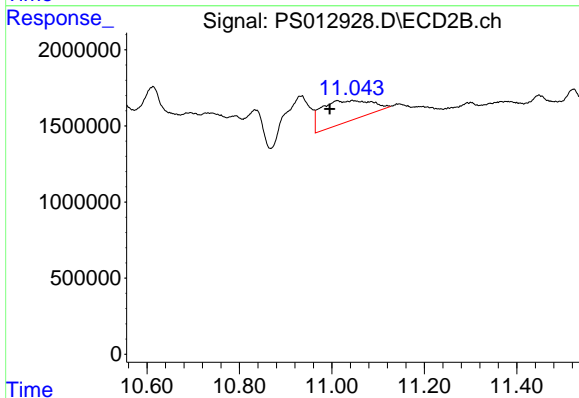
#12 2,4,5-T
 R.T.: 0.000 min
 Exp R.T.: 9.167 min
 Response: 0
 Conc: N.D.



#15 Picloram

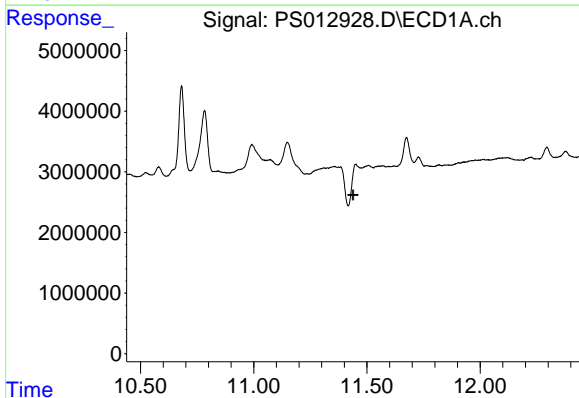
R.T.: 10.992 min
 Delta R.T.: -0.015 min
 Response: 7922382
 Conc: 1.25 ng/ml

Instrument :
 ECD_S
 ClientSampleId :



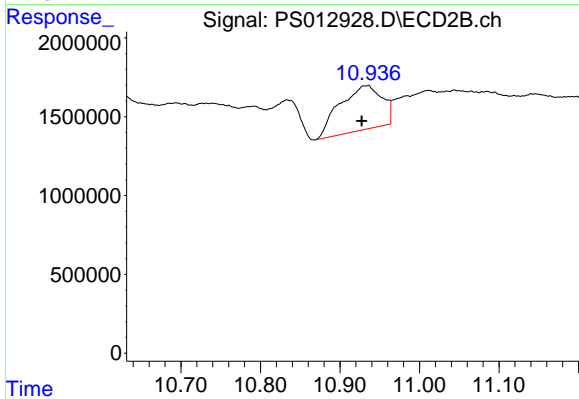
#15 Picloram

R.T.: 11.044 min
 Delta R.T.: 0.049 min
 Response: 10409195
 Conc: 2.89 ng/ml



#16 DCPA

R.T.: 11.450 min
 Delta R.T.: 0.012 min
 Response: -6321714
 Conc: N.D.



#16 DCPA

R.T.: 10.935 min
 Delta R.T.: 0.008 min
 Response: 10350615
 Conc: 3.40 ng/ml