

Data Path : Z:\pestpcbsrv\HPCHEM1\ECD\_S\Data\PS102020\  
 Data File : PS012935.D  
 Signal(s) : Signal #1: ECD1A.ch Signal #2: ECD2B.ch  
 Acq On : 21 Oct 2020 05:00  
 Operator : DD\AJ  
 Sample : L4457-01  
 Misc :  
 ALS Vial : 40 Sample Multiplier: 1

Instrument :  
 ECD\_S  
 ClientSampleId :

Integration File signal 1: autoint1.e  
 Integration File signal 2: autoint2.e  
 Quant Time: Oct 21 06:03:18 2020  
 Quant Method : Z:\pestpcbsrv\HPCHEM1\ECD\_S\Method\PS102020.M  
 Quant Title : 8080.M  
 QLast Update : Wed Oct 21 02:27:47 2020  
 Response via : Initial Calibration  
 Integrator: ChemStation

Volume Inj. : 2 µl  
 Signal #1 Phase : Rtx-CLPesticides Signal #2 Phase: Rtx-CLPesticides2  
 Signal #1 Info : 30M x 0.32mm x0.5 Signal #2 Info : 30M x 0.32mm x 0.25µm

Compound	RT#1	RT#2	Resp#1	Resp#2	ng/ml	ng/ml
-----						
System Monitoring Compounds						
4) S 2,4-DCAA	7.212	6.914	687.9E6	354.4E6	768.493	883.267
Target Compounds						
1) T Dalapon	2.994	2.591	71945889	110.1E6	70.773	209.408 #
2) T 3,5-DICHL...	0.000	6.097	0	42295097	N.D.	67.124
3) T 4-Nitroph...	6.980	0.000	1482024	0	3.544	N.D. #
5) T DICAMBA	7.389	7.048	11079640	13561799	3.112	7.969 #
6) T MCPP	7.623	7.121	15834652	1668732	5.946	1.254 #
8) T DICHLORPROP	0.000	7.751	0	5132154	N.D.	11.172
9) T 2,4-D	8.391	0.000	86810958	0	84.135	N.D. #
10) T Pentachlo...	8.685	0.000	9467630	0	<MDL	N.D. #
11) T 2,4,5-TP ...	0.000	8.764	0	9275769	N.D.	3.913
12) T 2,4,5-T	9.401	0.000	16399999	0	3.132	N.D. #
15) T Picloram	11.048	10.927	28891324	7468742	4.564	2.075 #
16) T DCPA	11.502	10.927	-1787882	7468742	N.D.	2.451
-----						

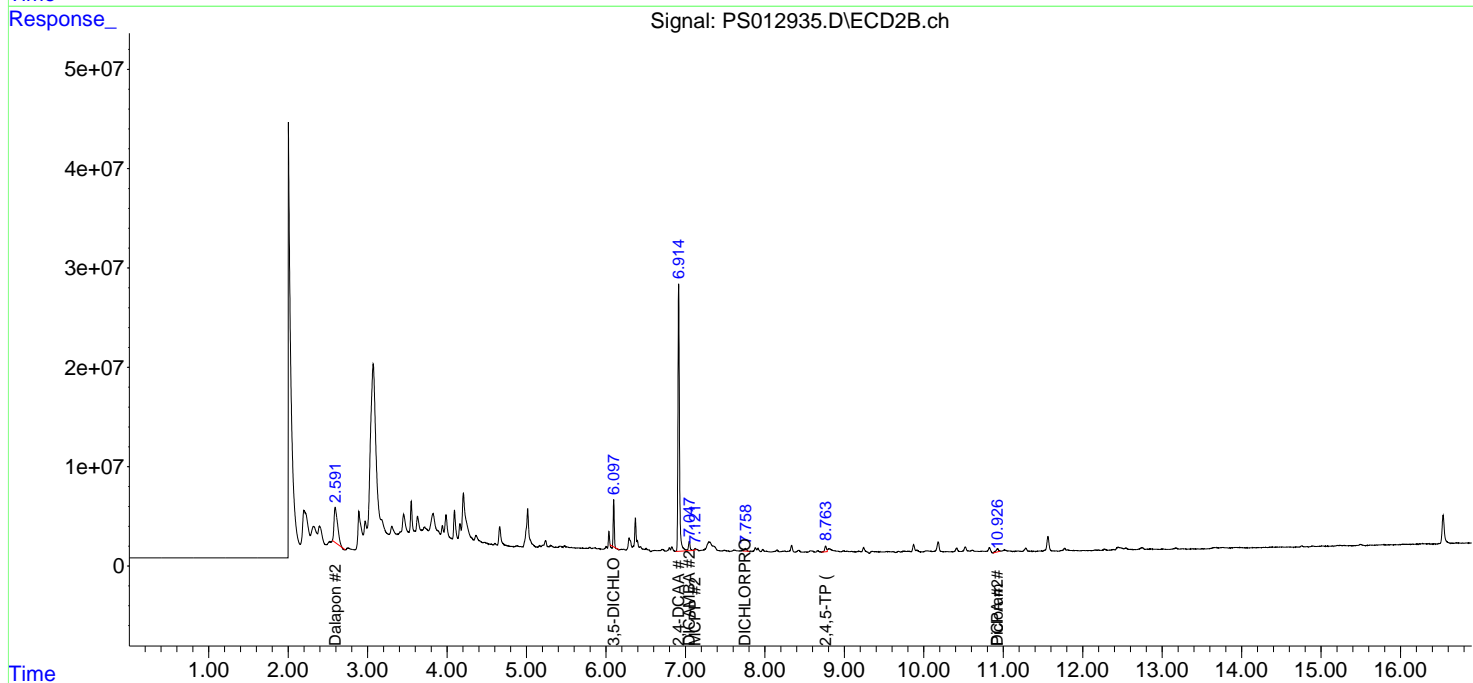
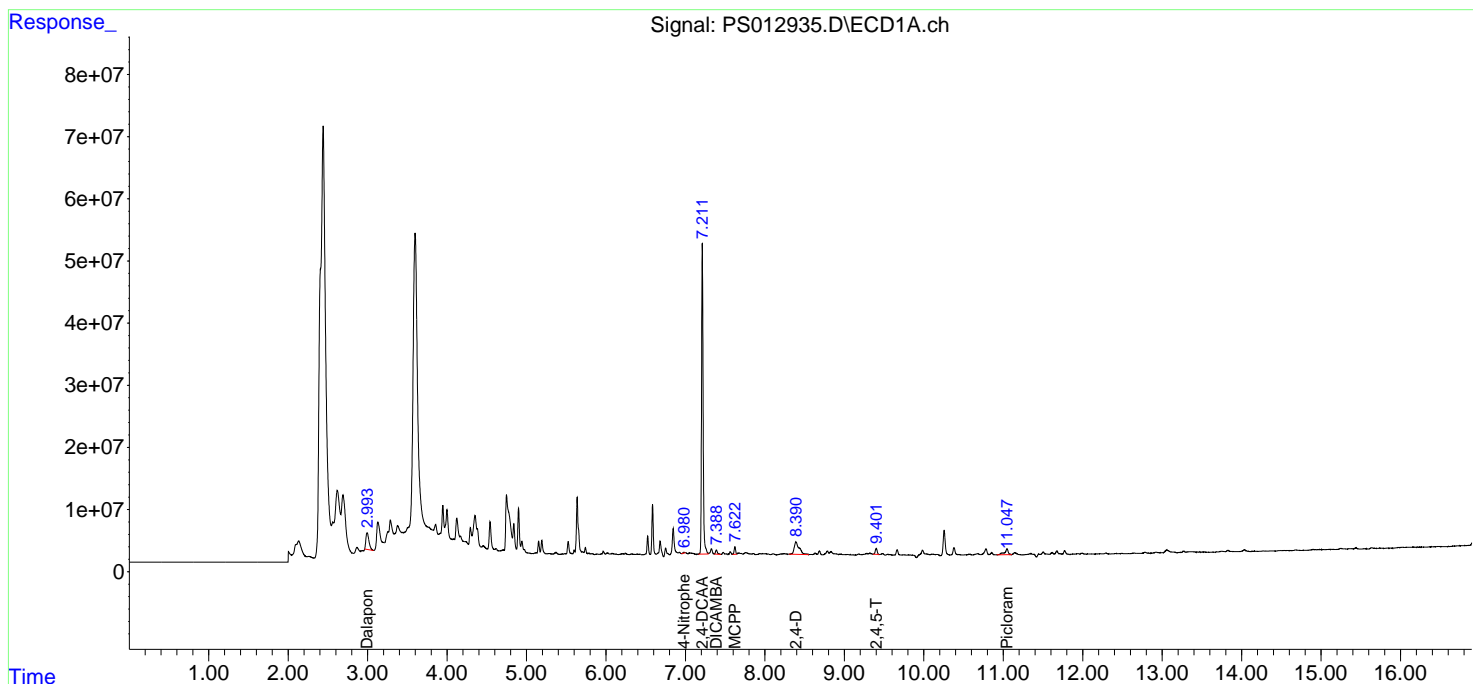
(f)=RT Delta > 1/2 Window (#)=Amounts differ by > 25% (m)=manual int.

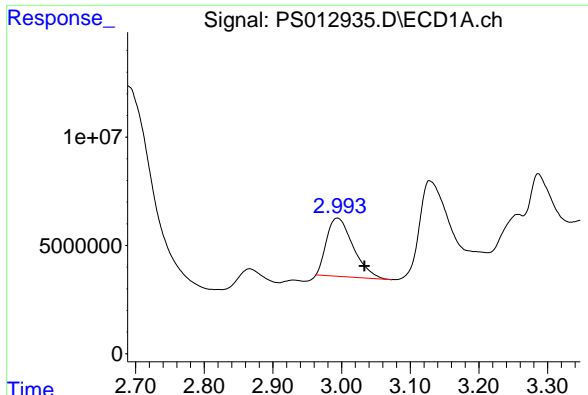
Data Path : Z:\pestpcbsrv\HPCHEM1\ECD\_S\Data\PS102020\  
 Data File : PS012935.D  
 Signal(s) : Signal #1: ECD1A.ch Signal #2: ECD2B.ch  
 Acq On : 21 Oct 2020 05:00  
 Operator : DD\AJ  
 Sample : L4457-01  
 Misc :  
 ALS Vial : 40 Sample Multiplier: 1

Instrument :  
 ECD\_S  
 ClientSampled :

Integration File signal 1: autoint1.e  
 Integration File signal 2: autoint2.e  
 Quant Time: Oct 21 06:03:18 2020  
 Quant Method : Z:\pestpcbsrv\HPCHEM1\ECD\_S\Method\PS102020.M  
 Quant Title : 8080.M  
 QLast Update : Wed Oct 21 02:27:47 2020  
 Response via : Initial Calibration  
 Integrator: ChemStation

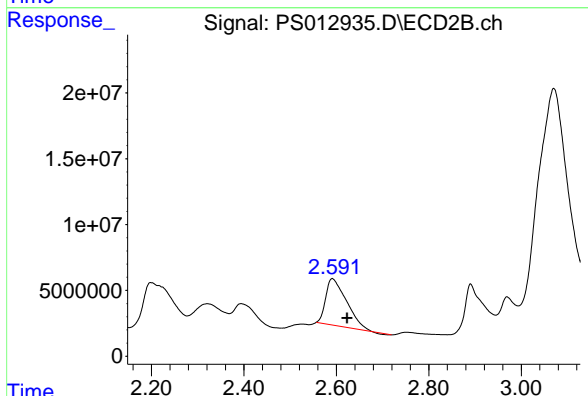
Volume Inj. : 2 µl  
 Signal #1 Phase : Rtx-CLPesticides Signal #2 Phase: Rtx-CLPesticides2  
 Signal #1 Info : 30M x 0.32mm x0.5 Signal #2 Info : 30M x 0.32mm x 0.25µm



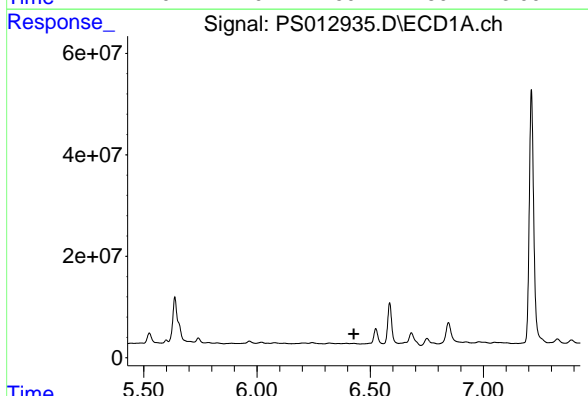


#1 Dalapon  
 R.T.: 2.994 min  
 Delta R.T.: -0.039 min  
 Response: 71945889  
 Conc: 70.77 ng/ml

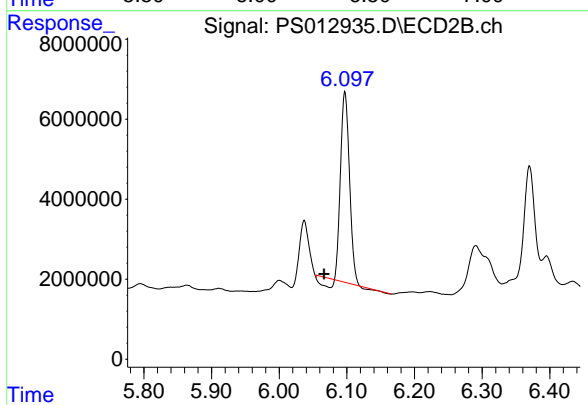
Instrument :  
 ECD\_S  
 ClientSampled :



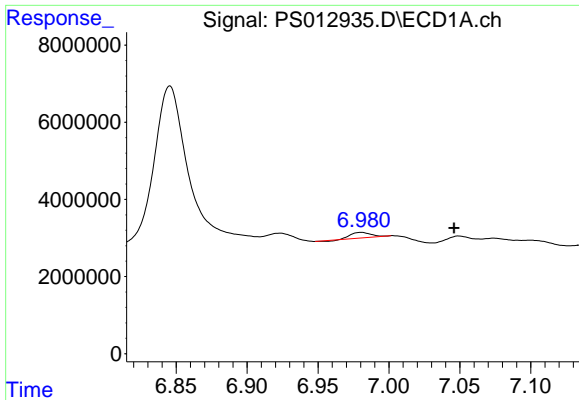
#1 Dalapon  
 R.T.: 2.591 min  
 Delta R.T.: -0.032 min  
 Response: 110122940  
 Conc: 209.41 ng/ml



#2 3,5-DICHLOROBENZOIC ACID  
 R.T.: 0.000 min  
 Exp R.T. : 6.428 min  
 Response: 0  
 Conc: N.D.

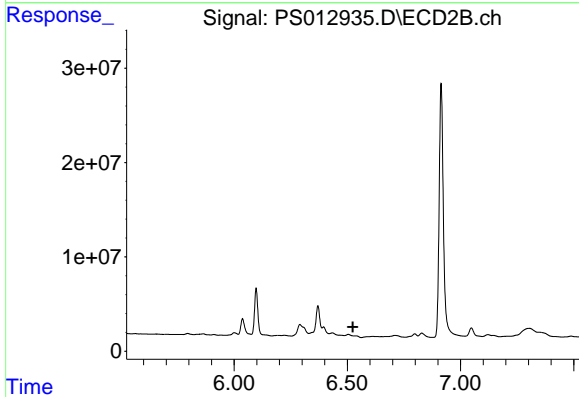


#2 3,5-DICHLOROBENZOIC ACID  
 R.T.: 6.097 min  
 Delta R.T.: 0.031 min  
 Response: 42295097  
 Conc: 67.12 ng/ml

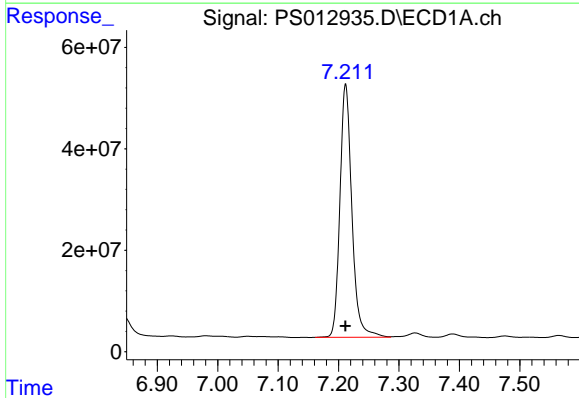


#3 4-Nitrophenol  
 R.T.: 6.980 min  
 Delta R.T.: -0.066 min  
 Response: 1482024  
 Conc: 3.54 ng/ml

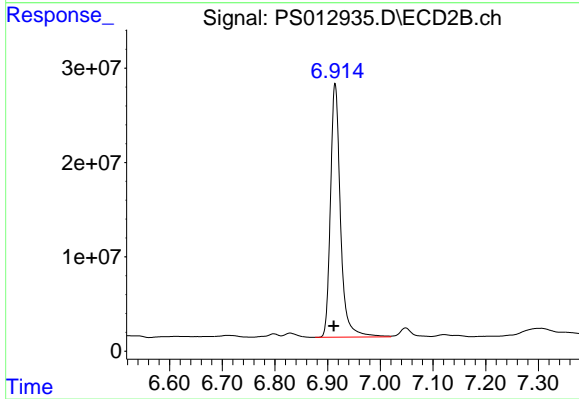
Instrument :  
 ECD\_S  
 ClientSampled :



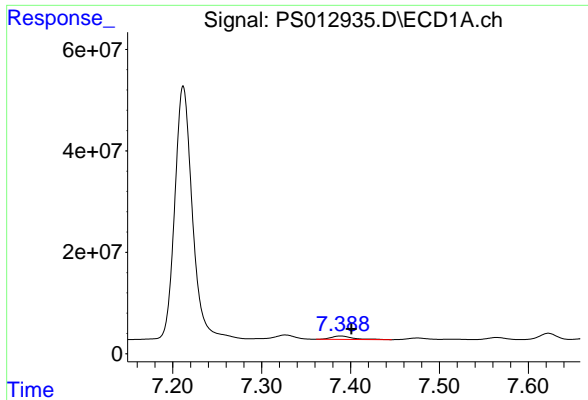
#3 4-Nitrophenol  
 R.T.: 0.000 min  
 Exp R.T. : 6.525 min  
 Response: 0  
 Conc: N.D.



#4 2,4-DCAA  
 R.T.: 7.212 min  
 Delta R.T.: 0.000 min  
 Response: 687854257  
 Conc: 768.49 ng/ml



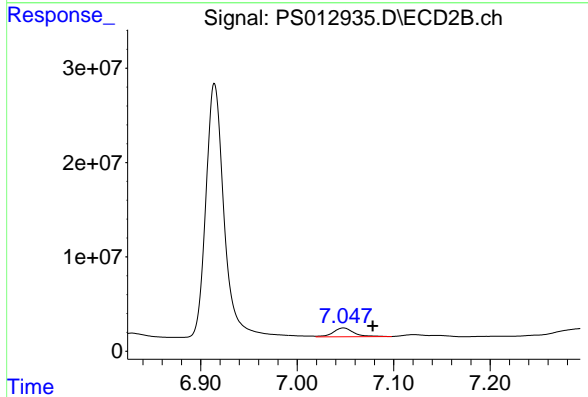
#4 2,4-DCAA  
 R.T.: 6.914 min  
 Delta R.T.: 0.002 min  
 Response: 354412459  
 Conc: 883.27 ng/ml



#5 DICAMBA

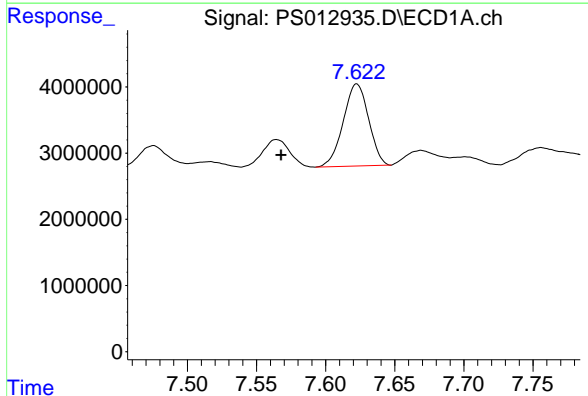
R.T.: 7.389 min  
Delta R.T.: -0.012 min  
Response: 11079640  
Conc: 3.11 ng/ml

Instrument :  
ECD\_S  
ClientSampleId :



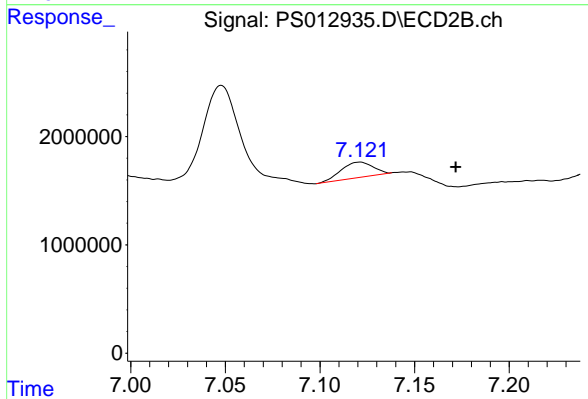
#5 DICAMBA

R.T.: 7.048 min  
Delta R.T.: -0.030 min  
Response: 13561799  
Conc: 7.97 ng/ml



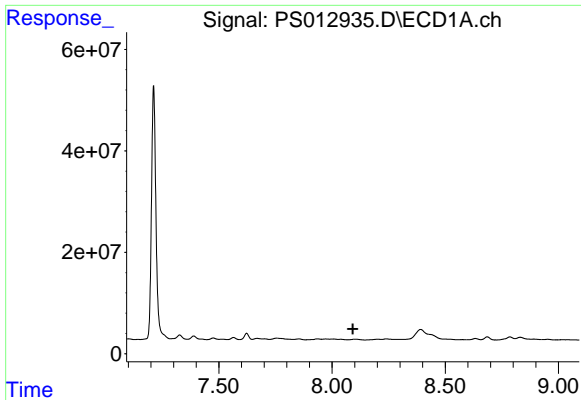
#6 MCPP

R.T.: 7.623 min  
Delta R.T.: 0.055 min  
Response: 15834652  
Conc: 5.95 ug/ml



#6 MCPP

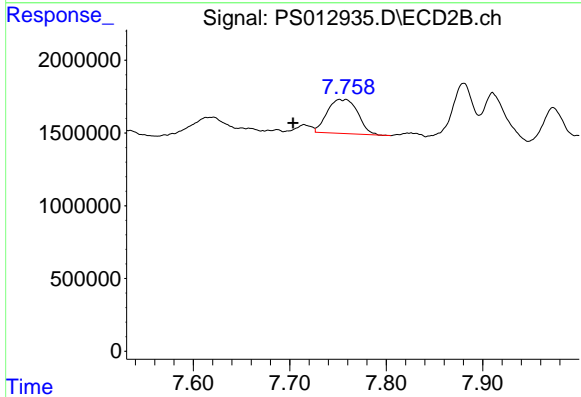
R.T.: 7.121 min  
Delta R.T.: -0.051 min  
Response: 1668732  
Conc: 1.25 ug/ml



#8 DICHLORPROP

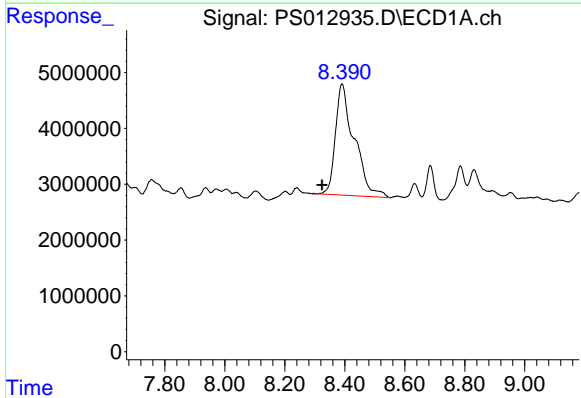
R.T.: 0.000 min  
 Exp R.T.: 8.092 min  
 Response: 0  
 Conc: N.D.

Instrument :  
 ECD\_S  
 ClientSampled :



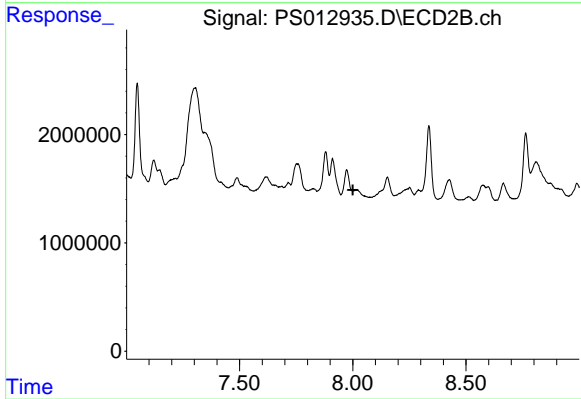
#8 DICHLORPROP

R.T.: 7.751 min  
 Delta R.T.: 0.048 min  
 Response: 5132154  
 Conc: 11.17 ng/ml



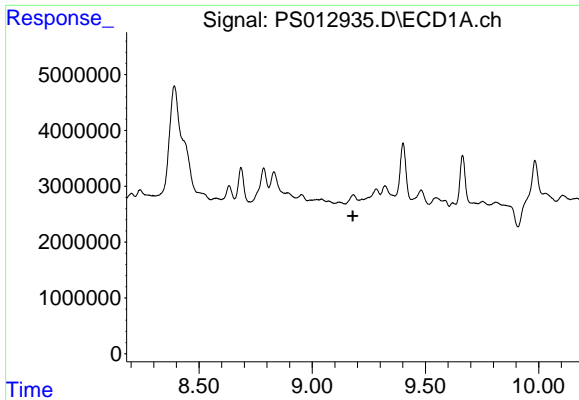
#9 2,4-D

R.T.: 8.391 min  
 Delta R.T.: 0.066 min  
 Response: 86810958  
 Conc: 84.14 ng/ml



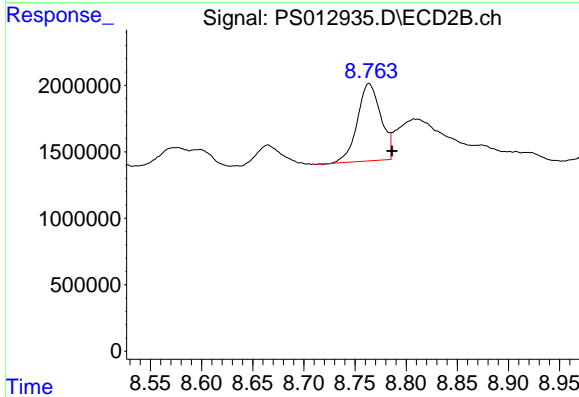
#9 2,4-D

R.T.: 0.000 min  
 Exp R.T.: 8.001 min  
 Response: 0  
 Conc: N.D.

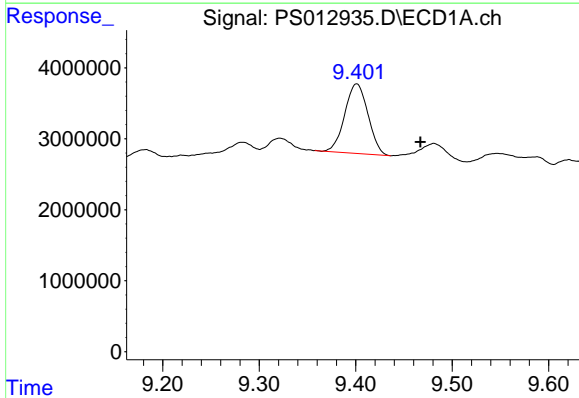


#11 2,4,5-TP (SILVEX)  
 R.T.: 0.000 min  
 Exp R.T.: 9.180 min  
 Response: 0  
 Conc: N.D.

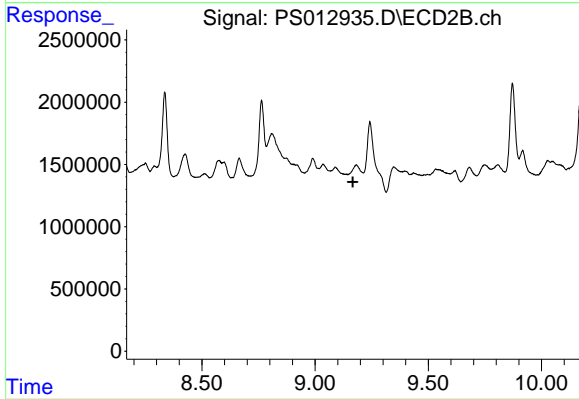
Instrument :  
 ECD\_S  
 ClientSampleId :



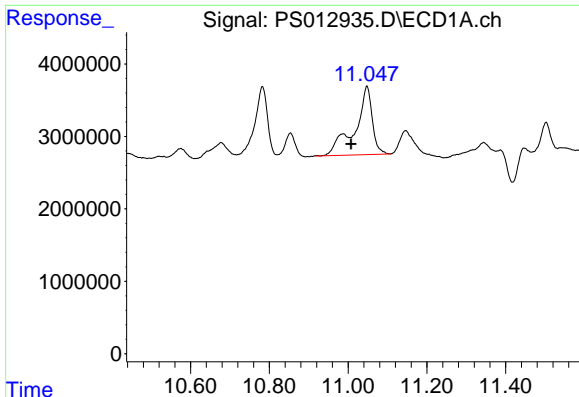
#11 2,4,5-TP (SILVEX)  
 R.T.: 8.764 min  
 Delta R.T.: -0.022 min  
 Response: 9275769  
 Conc: 3.91 ng/ml



#12 2,4,5-T  
 R.T.: 9.401 min  
 Delta R.T.: -0.066 min  
 Response: 16399999  
 Conc: 3.13 ng/ml



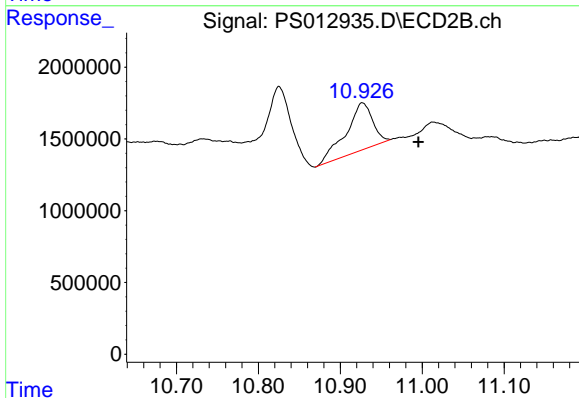
#12 2,4,5-T  
 R.T.: 0.000 min  
 Exp R.T.: 9.167 min  
 Response: 0  
 Conc: N.D.



#15 Picloram

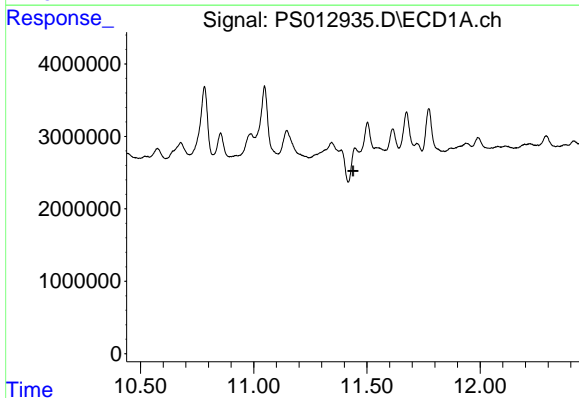
R.T.: 11.048 min  
 Delta R.T.: 0.040 min  
 Response: 28891324  
 Conc: 4.56 ng/ml

Instrument :  
 ECD\_S  
 ClientSampleId :



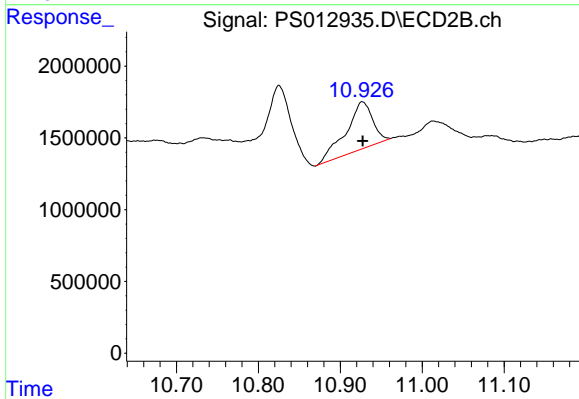
#15 Picloram

R.T.: 10.927 min  
 Delta R.T.: -0.068 min  
 Response: 7468742  
 Conc: 2.07 ng/ml



#16 DCPA

R.T.: 11.502 min  
 Delta R.T.: 0.064 min  
 Response: -1787882  
 Conc: N.D.



#16 DCPA

R.T.: 10.927 min  
 Delta R.T.: 0.000 min  
 Response: 7468742  
 Conc: 2.45 ng/ml