

Data Path : Z:\pestpcbsrv\HPCHEM1\ECD_S\Data\PS102119\
 Data File : PS007240.D
 Signal(s) : Signal #1: ECD1A.ch Signal #2: ECD2B.ch
 Acq On : 21 Oct 2019 19:51
 Operator : SM\AJ
 Sample : HSTDCCC750
 Misc :
 ALS Vial : 3 Sample Multiplier: 1

Instrument :
 ECD_S
 ClientSampleId :

Integration File signal 1: autoint1.e
 Integration File signal 2: autoint2.e
 Quant Time: Oct 22 05:14:13 2019
 Quant Method : Z:\pestpcbsrv\HPCHEM1\ECD_S\Method\PS101419.M
 Quant Title : 8080.M
 QLast Update : Mon Oct 14 13:54:23 2019
 Response via : Initial Calibration
 Integrator: ChemStation

Volume Inj. : 2 µl
 Signal #1 Phase : Rtx-CLPesticides Signal #2 Phase: Rtx-CLPesticides2
 Signal #1 Info : 30M x 0.32mm x0.5 Signal #2 Info : 30M x 0.32mm x 0.25µm

	Compound	RT#1	RT#2	Resp#1	Resp#2	ng/ml	ng/ml

System Monitoring Compounds							
4) S	2,4-DCAA	5.469	5.200	1018.3E6	535.0E6	744.015	760.656
Target Compounds							
1) T	Dalapon	2.047	1.692	1196.8E6	69690990	715.253	76.583 #
2) T	3,5-DICHL...	4.844	4.507	1262.3E6	650.1E6	751.187	755.604
3) T	4-Nitroph...	5.323	4.889	420.0E6	265.9E6	699.413	673.352
5) T	DICAMBA	5.618	5.325	3510.0E6	1867.8E6	714.378	717.792
6) T	MCP P	5.769	5.325	264.6E6	1867.8E6	75.081	984.684 #
7) T	MCPA	5.901	5.585	397.3E6	213.3E6	77.020	73.360
8) T	DICHLORPROP	6.242	5.854	885.0E6	479.0E6	754.985	735.623
9) T	2,4-D	6.456	6.123	947.8E6	583.3E6	769.067	731.191
10) T	Pentachlo...	6.713	6.485	13514.0E6	7118.2E6	756.998	740.219
11) T	2,4,5-TP ...	7.246	6.847	5277.1E6	2839.0E6	757.152	746.401
12) T	2,4,5-T	7.518	7.204	5599.8E6	2665.2E6	732.507	760.688
13) T	2,4-DB	8.045	7.689	700.3E6	366.2E6	734.479	781.307
14) T	DINOSEB	9.127	7.998	4072.6E6	2109.4E6	699.857	751.379
15) T	Picloram	8.962	8.892	7184.6E6	3784.6E6	650.943	616.364
16) T	DCPA	9.400	8.892	6821.1E6	3784.6E6	761.768	754.702

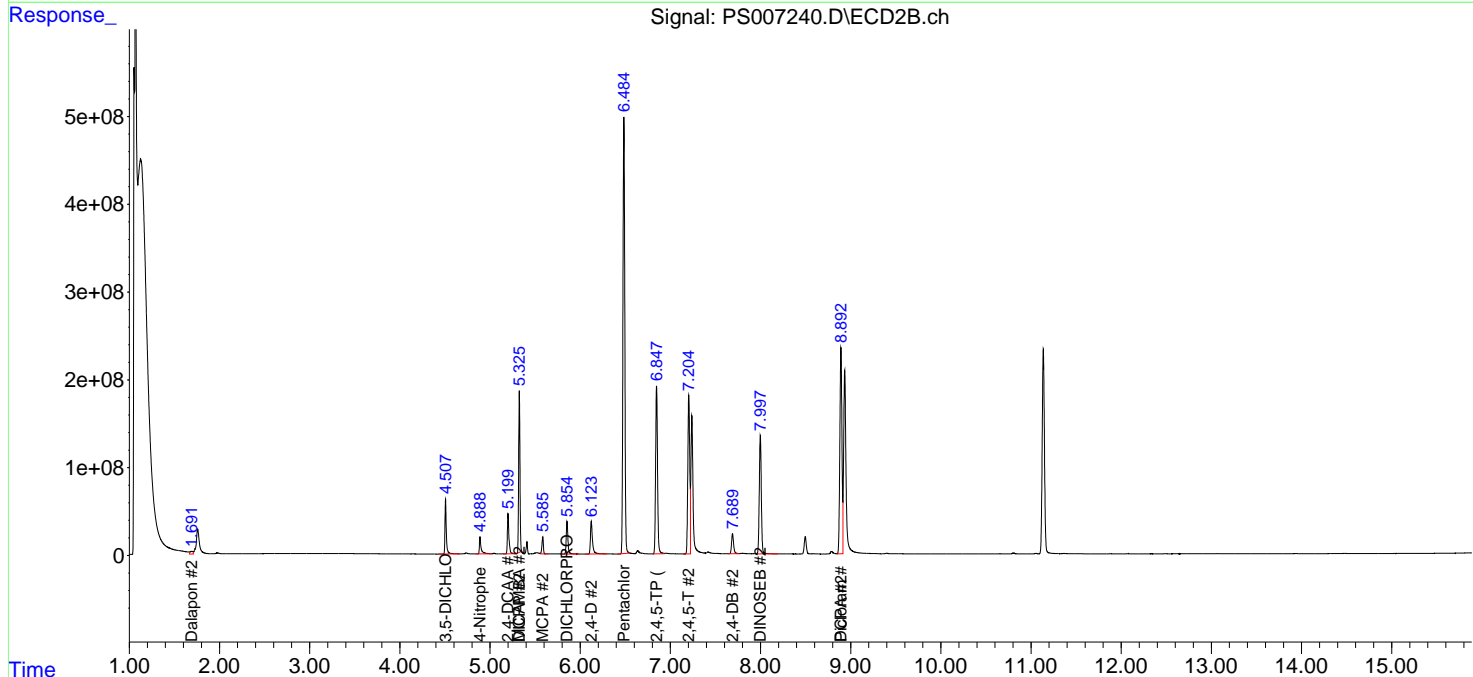
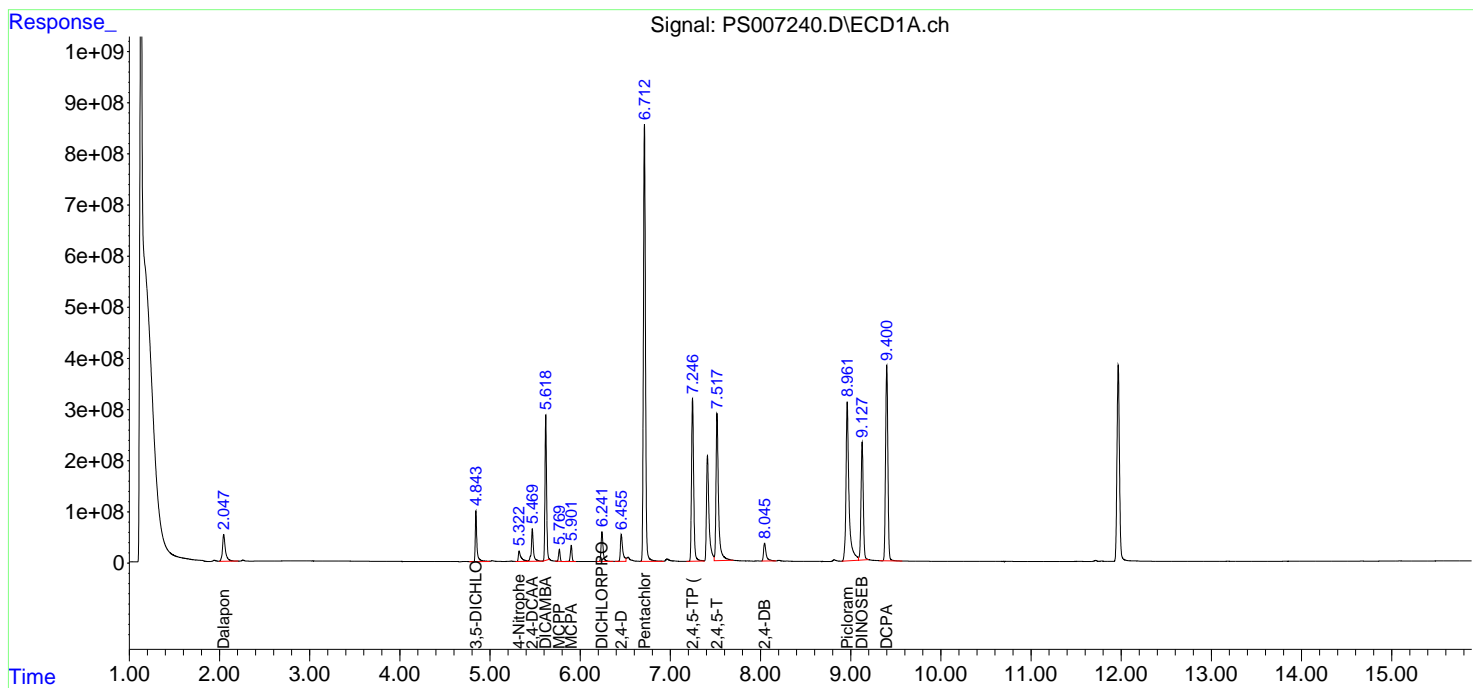
(f)=RT Delta > 1/2 Window (#)=Amounts differ by > 25% (m)=manual int.

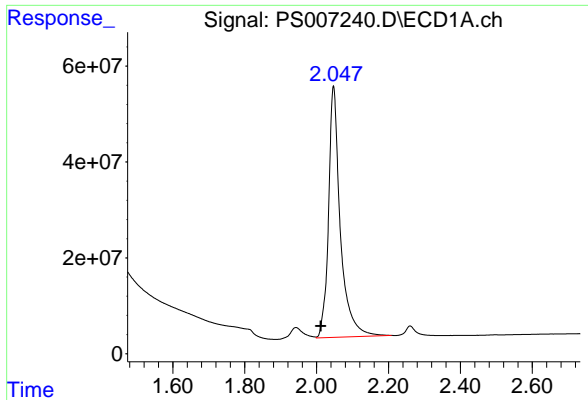
Data Path : Z:\pestpcbsrv\HPCHEM1\ECD_S\Data\PS102119\
 Data File : PS007240.D
 Signal(s) : Signal #1: ECD1A.ch Signal #2: ECD2B.ch
 Acq On : 21 Oct 2019 19:51
 Operator : SM\AJ
 Sample : HSTDCCC750
 Misc :
 ALS Vial : 3 Sample Multiplier: 1

Instrument :
 ECD_S
 ClientSampled :

Integration File signal 1: autoint1.e
 Integration File signal 2: autoint2.e
 Quant Time: Oct 22 05:14:13 2019
 Quant Method : Z:\pestpcbsrv\HPCHEM1\ECD_S\Method\PS101419.M
 Quant Title : 8080.M
 QLast Update : Mon Oct 14 13:54:23 2019
 Response via : Initial Calibration
 Integrator: ChemStation

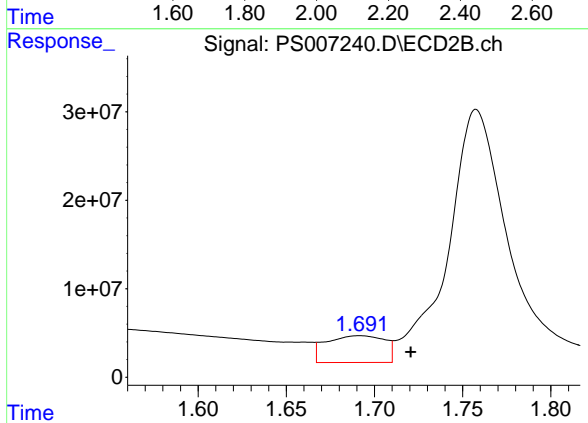
Volume Inj. : 2 µl
 Signal #1 Phase : Rtx-CLPesticides Signal #2 Phase: Rtx-CLPesticides2
 Signal #1 Info : 30M x 0.32mm x0.5 Signal #2 Info : 30M x 0.32mm x 0.25µm



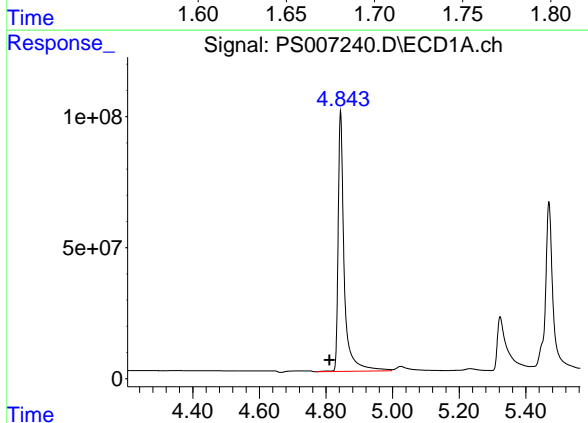


#1 Dalapon
 R.T.: 2.047 min
 Delta R.T.: 0.036 min
 Response: 1196817431
 Conc: 715.25 ng/ml

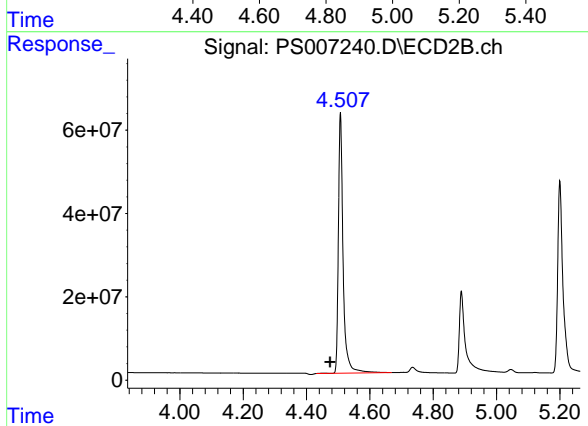
Instrument :
 ECD_S
 ClientSampled :



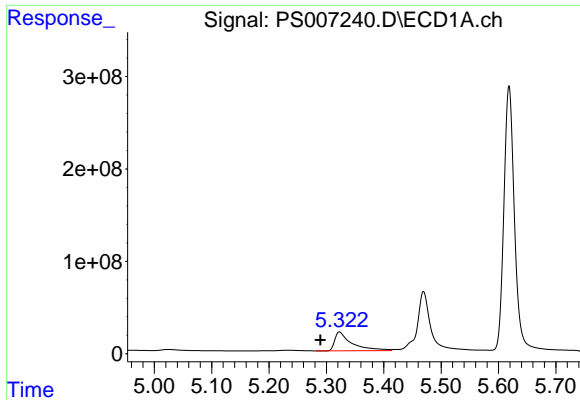
#1 Dalapon
 R.T.: 1.692 min
 Delta R.T.: -0.029 min
 Response: 69690990
 Conc: 76.58 ng/ml



#2 3,5-DICHLOROBENZOIC ACID
 R.T.: 4.844 min
 Delta R.T.: 0.034 min
 Response: 1262271209
 Conc: 751.19 ng/ml

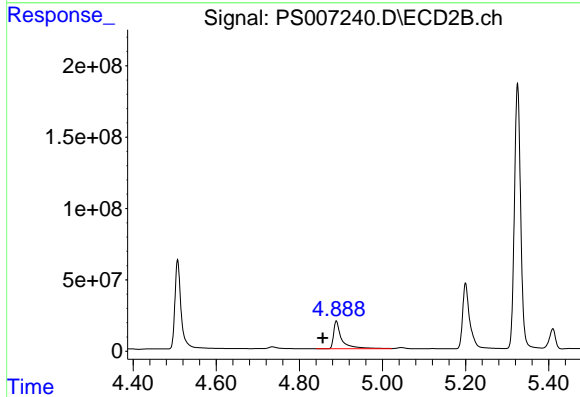


#2 3,5-DICHLOROBENZOIC ACID
 R.T.: 4.507 min
 Delta R.T.: 0.032 min
 Response: 650145326
 Conc: 755.60 ng/ml

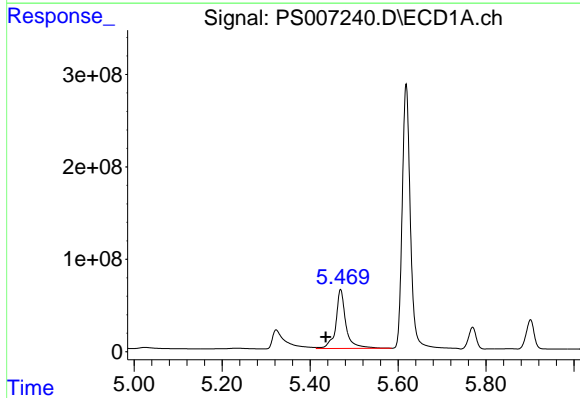


#3 4-Nitrophenol
 R.T.: 5.323 min
 Delta R.T.: 0.034 min
 Response: 419979028
 Conc: 699.41 ng/ml

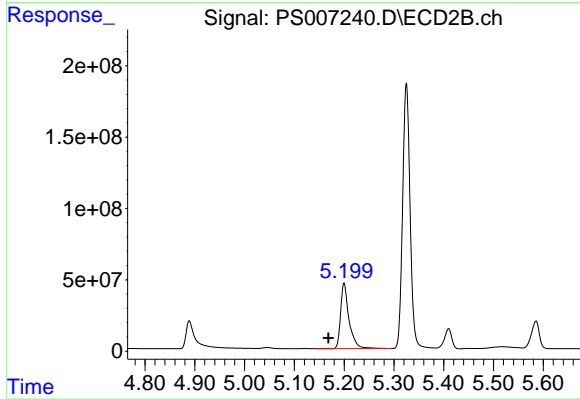
Instrument :
 ECD_S
 ClientSampled :



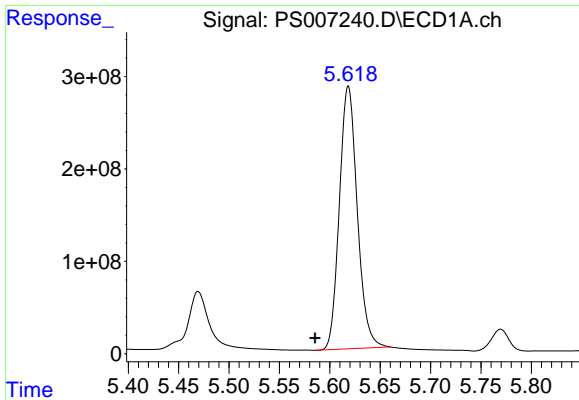
#3 4-Nitrophenol
 R.T.: 4.889 min
 Delta R.T.: 0.033 min
 Response: 265903229
 Conc: 673.35 ng/ml



#4 2,4-DCAA
 R.T.: 5.469 min
 Delta R.T.: 0.034 min
 Response: 1018309838
 Conc: 744.01 ng/ml



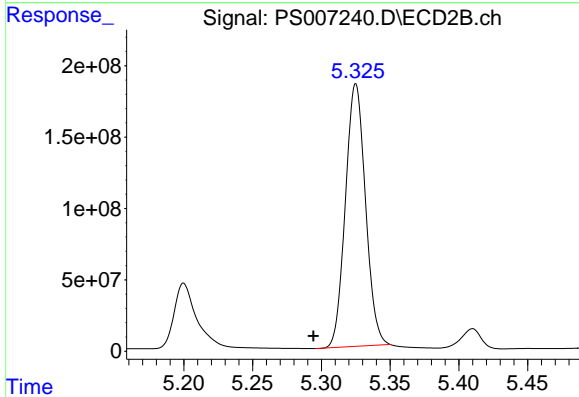
#4 2,4-DCAA
 R.T.: 5.200 min
 Delta R.T.: 0.032 min
 Response: 534974531
 Conc: 760.66 ng/ml



#5 DICAMBA

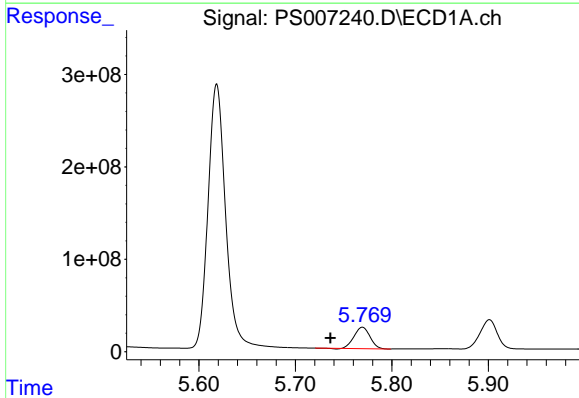
R.T.: 5.618 min
 Delta R.T.: 0.033 min
 Response: 3510031574
 Conc: 714.38 ng/ml

Instrument :
 ECD_S
 ClientSampleId :



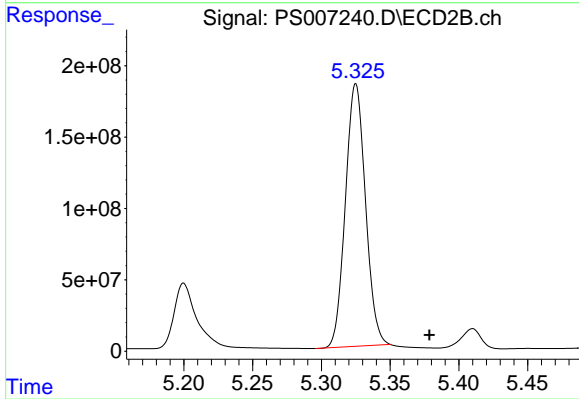
#5 DICAMBA

R.T.: 5.325 min
 Delta R.T.: 0.031 min
 Response: 1867770019
 Conc: 717.79 ng/ml



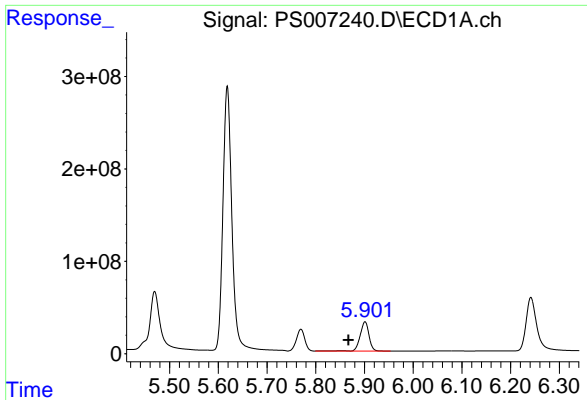
#6 MCPP

R.T.: 5.769 min
 Delta R.T.: 0.033 min
 Response: 264628988
 Conc: 75.08 ug/ml



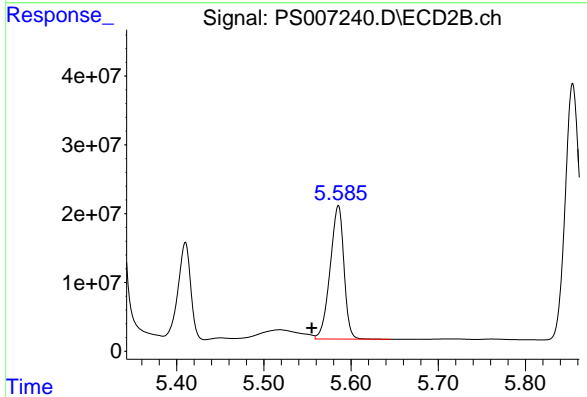
#6 MCPP

R.T.: 5.325 min
 Delta R.T.: -0.054 min
 Response: 1867770019
 Conc: 984.68 ug/ml

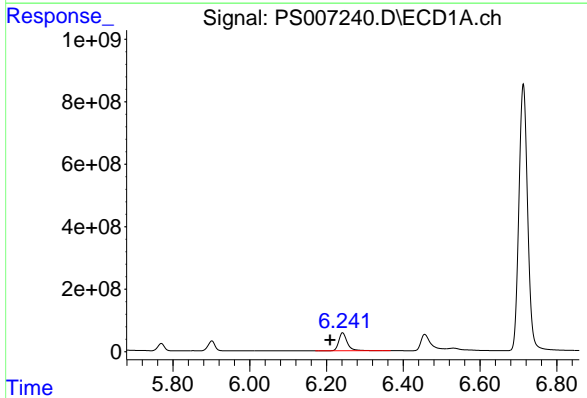


#7 MCPA
 R.T.: 5.901 min
 Delta R.T.: 0.034 min
 Response: 397255142
 Conc: 77.02 ug/ml

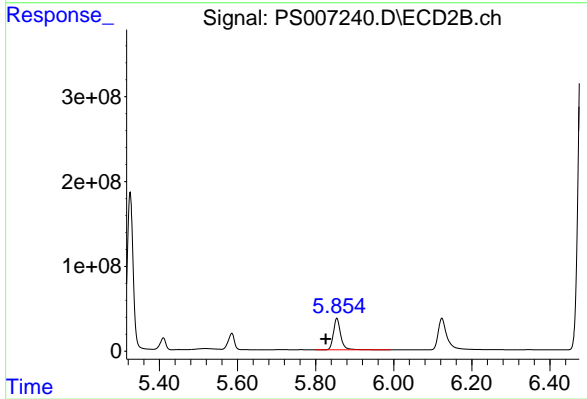
Instrument :
 ECD_S
 ClientSampled :



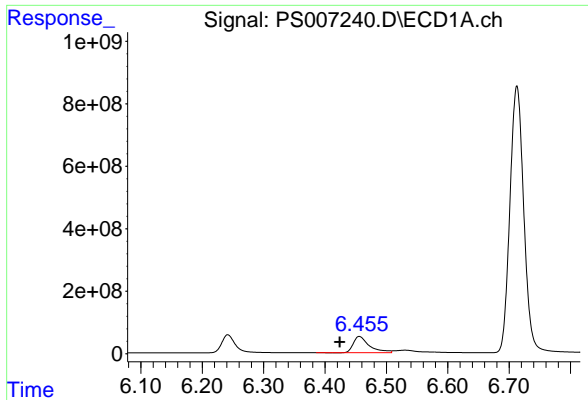
#7 MCPA
 R.T.: 5.585 min
 Delta R.T.: 0.030 min
 Response: 213266691
 Conc: 73.36 ug/ml



#8 DICHLORPROP
 R.T.: 6.242 min
 Delta R.T.: 0.032 min
 Response: 885016082
 Conc: 754.98 ng/ml



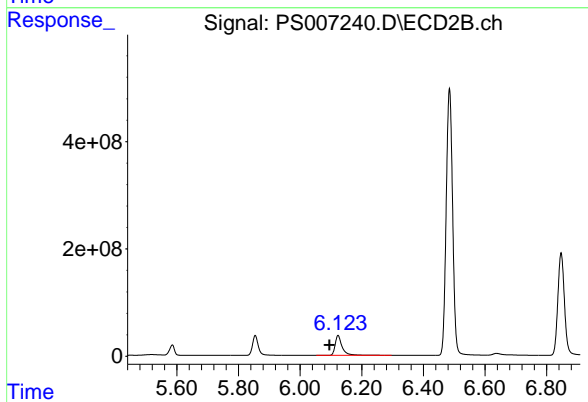
#8 DICHLORPROP
 R.T.: 5.854 min
 Delta R.T.: 0.028 min
 Response: 479049741
 Conc: 735.62 ng/ml



#9 2,4-D

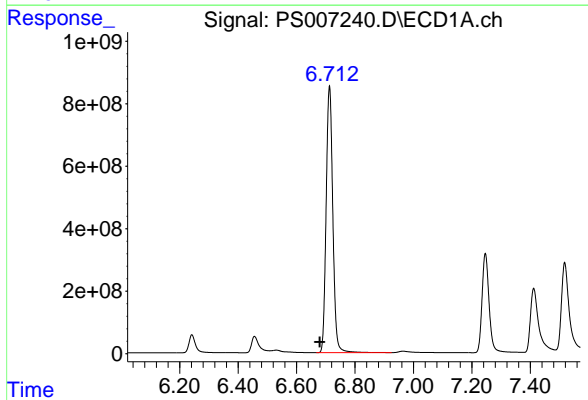
R.T.: 6.456 min
 Delta R.T.: 0.032 min
 Response: 947753076
 Conc: 769.07 ng/ml

Instrument :
 ECD_S
 ClientSampled :



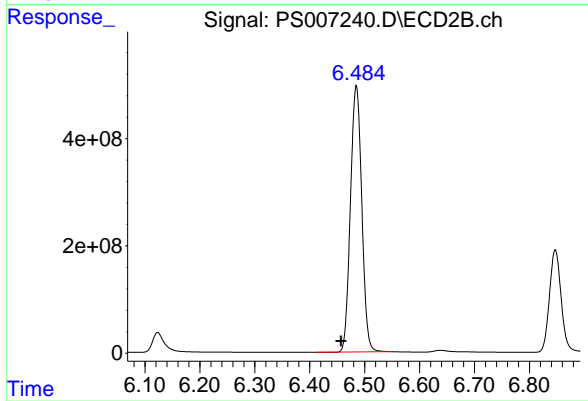
#9 2,4-D

R.T.: 6.123 min
 Delta R.T.: 0.028 min
 Response: 583340831
 Conc: 731.19 ng/ml



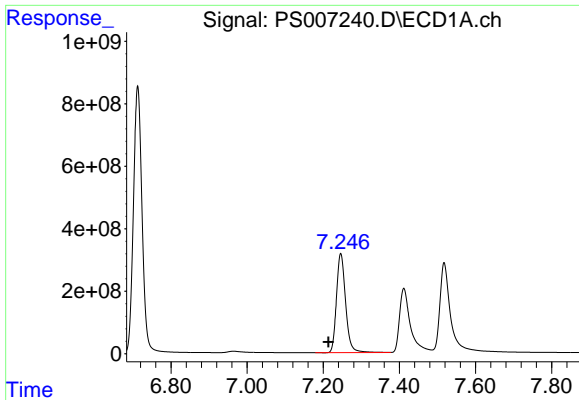
#10 Pentachlorophenol

R.T.: 6.713 min
 Delta R.T.: 0.033 min
 Response: 13514046893
 Conc: 757.00 ng/ml



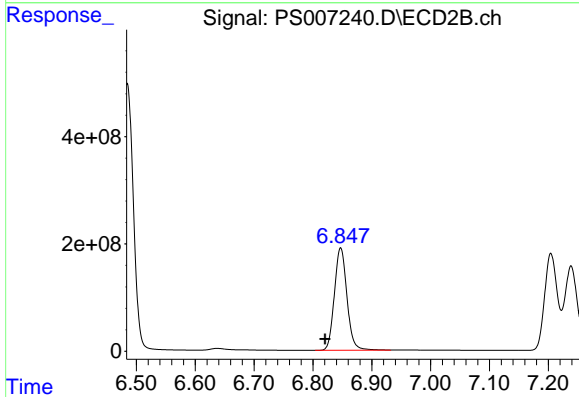
#10 Pentachlorophenol

R.T.: 6.485 min
 Delta R.T.: 0.027 min
 Response: 7118242711
 Conc: 740.22 ng/ml

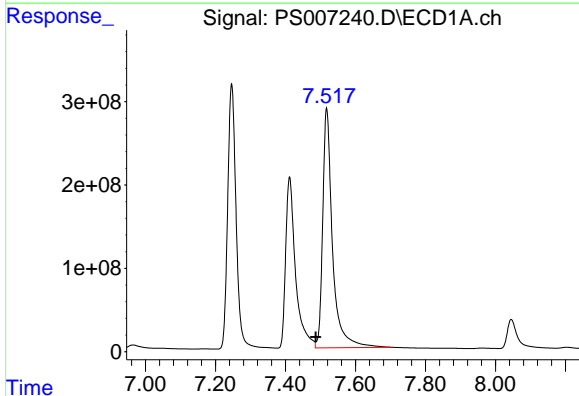


#11 2,4,5-TP (SILVEX)
 R.T.: 7.246 min
 Delta R.T.: 0.032 min
 Response: 5277106257
 Conc: 757.15 ng/ml

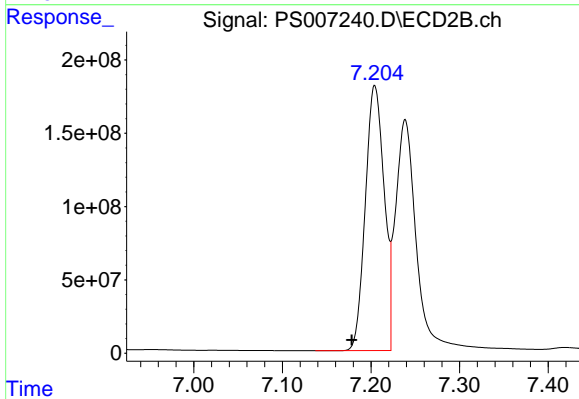
Instrument :
 ECD_S
 ClientSampleId :



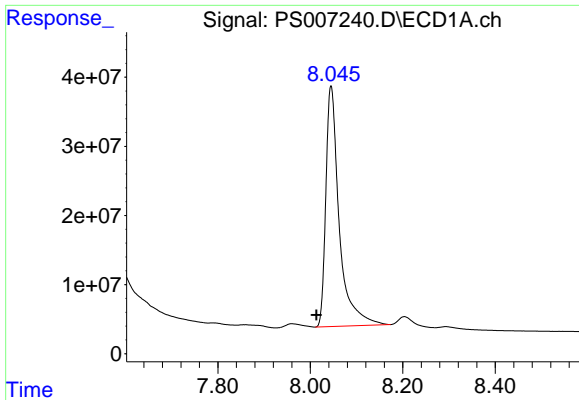
#11 2,4,5-TP (SILVEX)
 R.T.: 6.847 min
 Delta R.T.: 0.027 min
 Response: 2839019987
 Conc: 746.40 ng/ml



#12 2,4,5-T
 R.T.: 7.518 min
 Delta R.T.: 0.032 min
 Response: 5599833305
 Conc: 732.51 ng/ml

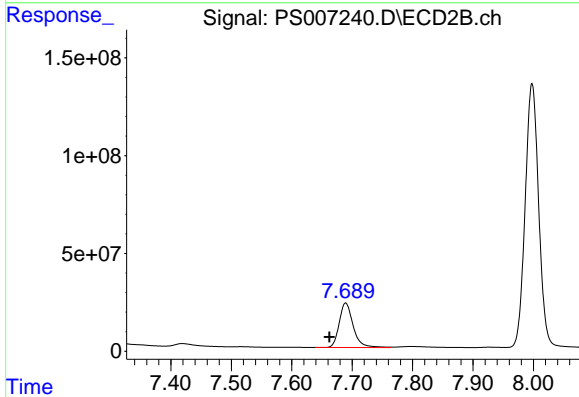


#12 2,4,5-T
 R.T.: 7.204 min
 Delta R.T.: 0.026 min
 Response: 2665169507
 Conc: 760.69 ng/ml

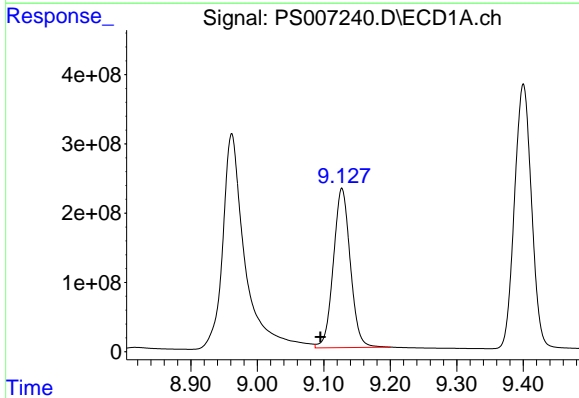


#13 2,4-DB
 R.T.: 8.045 min
 Delta R.T.: 0.031 min
 Response: 700297657
 Conc: 734.48 ng/ml

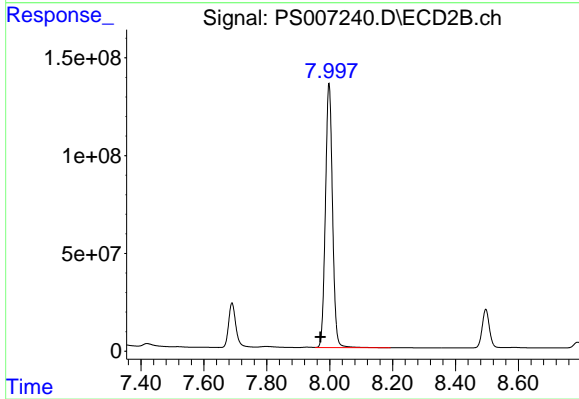
Instrument :
 ECD_S
 ClientSampled :



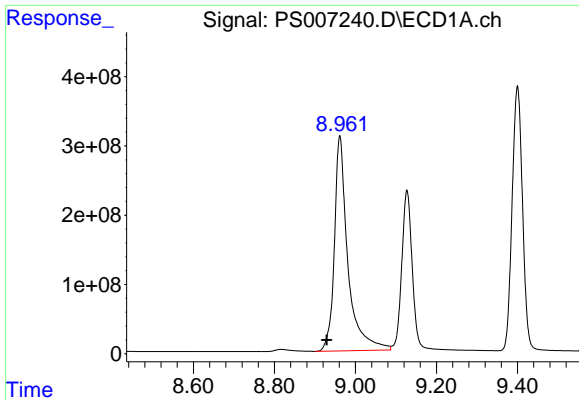
#13 2,4-DB
 R.T.: 7.689 min
 Delta R.T.: 0.027 min
 Response: 366195852
 Conc: 781.31 ng/ml



#14 DINOSEB
 R.T.: 9.127 min
 Delta R.T.: 0.032 min
 Response: 4072599155
 Conc: 699.86 ng/ml



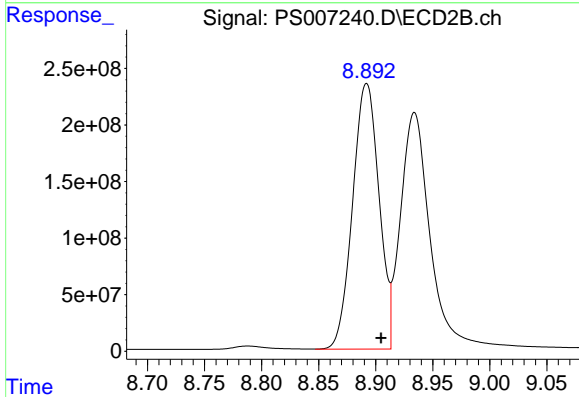
#14 DINOSEB
 R.T.: 7.998 min
 Delta R.T.: 0.027 min
 Response: 2109392410
 Conc: 751.38 ng/ml



#15 Picloram

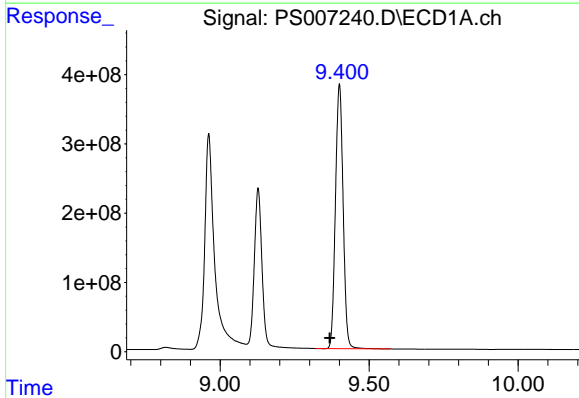
R.T.: 8.962 min
 Delta R.T.: 0.032 min
 Response: 7184640237
 Conc: 650.94 ng/ml

Instrument :
 ECD_S
 ClientSampled :



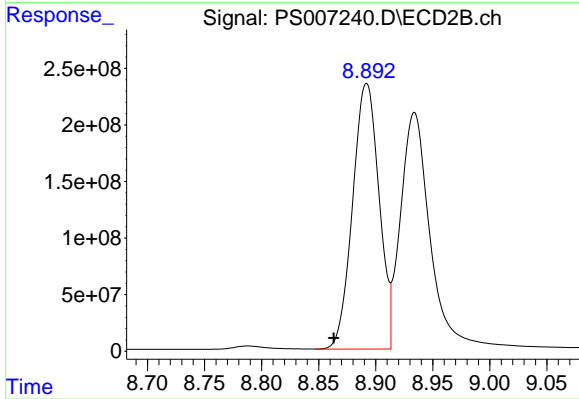
#15 Picloram

R.T.: 8.892 min
 Delta R.T.: -0.013 min
 Response: 3784570145
 Conc: 616.36 ng/ml



#16 DCPA

R.T.: 9.400 min
 Delta R.T.: 0.033 min
 Response: 6821101196
 Conc: 761.77 ng/ml



#16 DCPA

R.T.: 8.892 min
 Delta R.T.: 0.029 min
 Response: 3784570145
 Conc: 754.70 ng/ml