

Data Path : Z:\pestpcbsrv\HPCHEM1\ECD\_S\Data\PS102125\  
 Data File : PS032106.D  
 Signal(s) : Signal #1: ECD1A.ch Signal #2: ECD2B.ch  
 Acq On : 21 Oct 2025 18:52  
 Operator : AR\AJ  
 Sample : Q3381-03  
 Misc :  
 ALS Vial : 7 Sample Multiplier: 1

Instrument :  
 ECD\_S  
 ClientSampleId :  
 VNJ-245

Integration File signal 1: autoint1.e  
 Integration File signal 2: autoint2.e  
 Quant Time: Oct 22 14:02:17 2025  
 Quant Method : Z:\pestpcbsrv\HPCHEM1\ECD\_S\Method\PS101325.M  
 Quant Title : 8080.M  
 QLast Update : Mon Oct 13 12:51:14 2025  
 Response via : Initial Calibration  
 Integrator: ChemStation

Volume Inj. : 1 µl  
 Signal #1 Phase : ZB-MR1 Signal #2 Phase: ZB-MR2  
 Signal #1 Info : 30M x 0.32mm x0.5 Signal #2 Info : 30M x 0.32mm x 0.25µm

Compound	RT#1	RT#2	Resp#1	Resp#2	ng/ml	ng/ml
-----						
System Monitoring Compounds						
4) S 2,4-DCAA	7.281	7.747	1108.4E6	307.2E6	232.504	279.178

Target Compounds

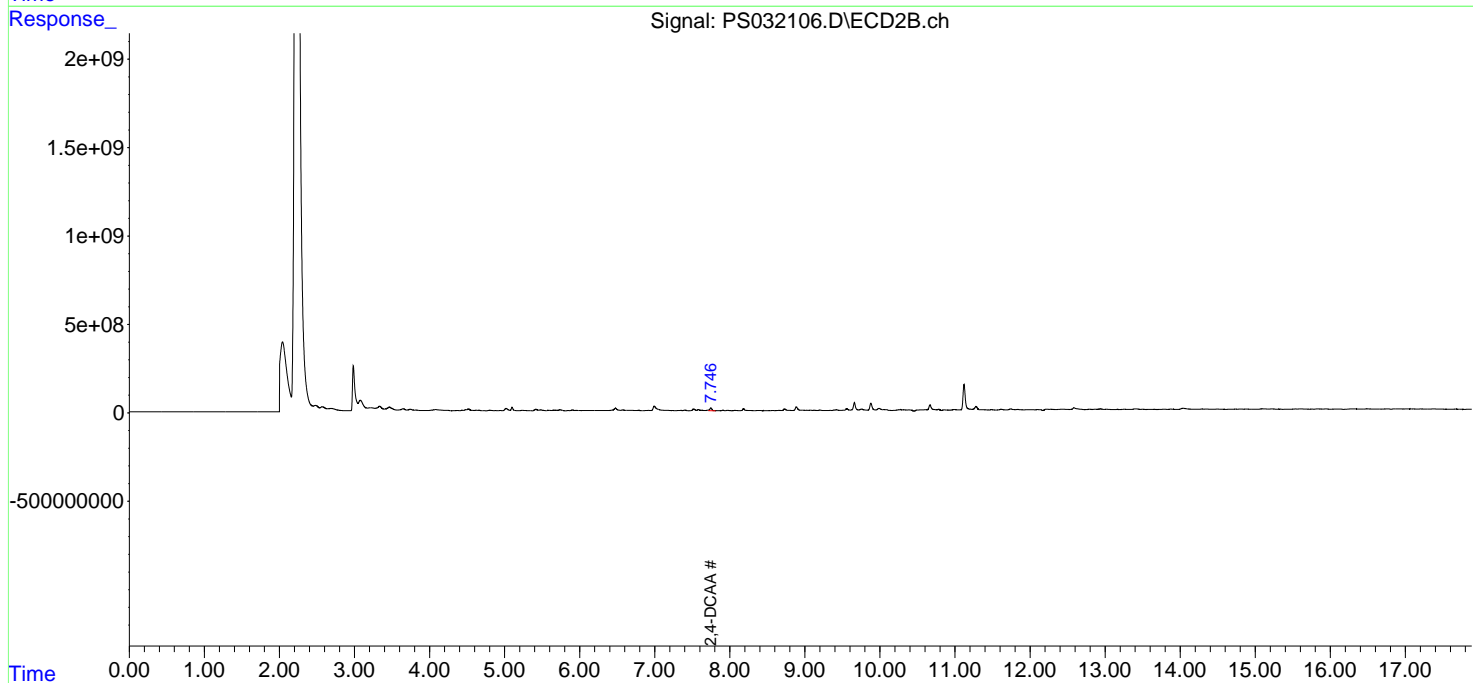
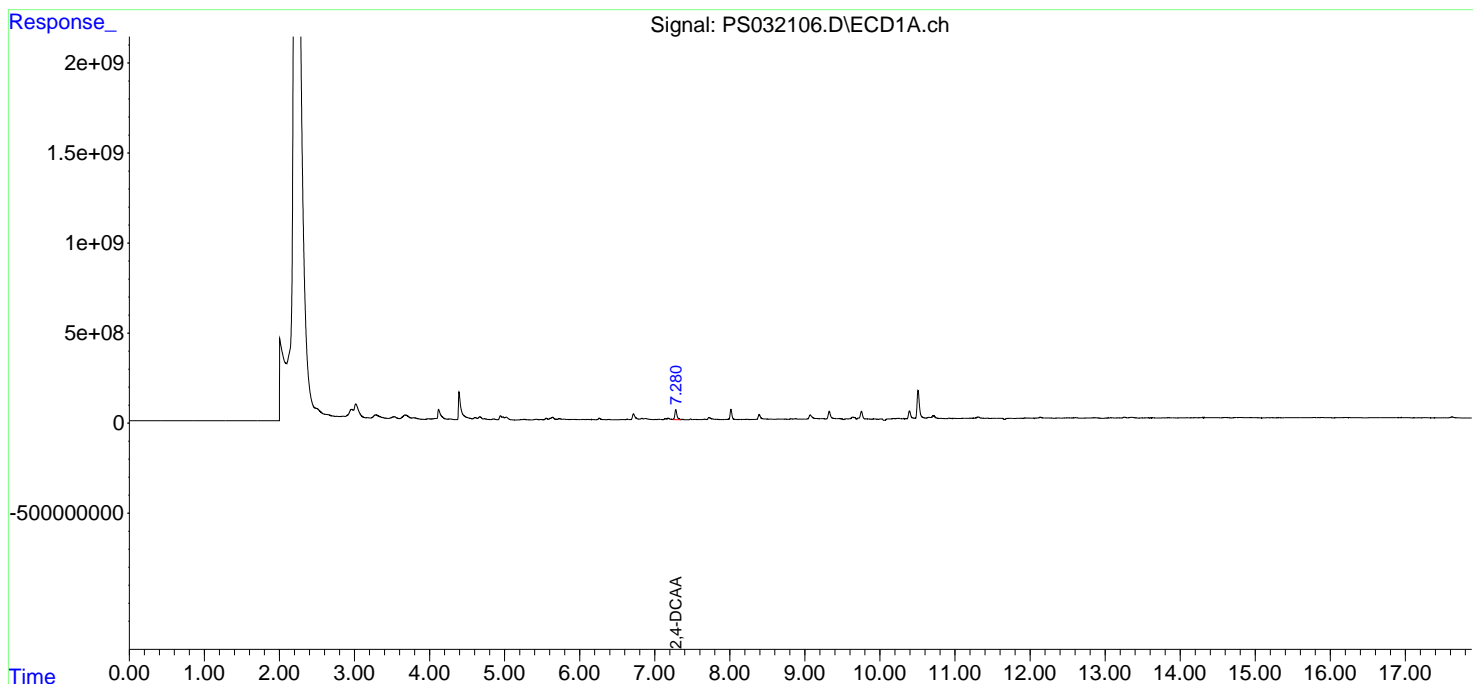
(f)=RT Delta > 1/2 Window (#)=Amounts differ by > 25% (m)=manual int.

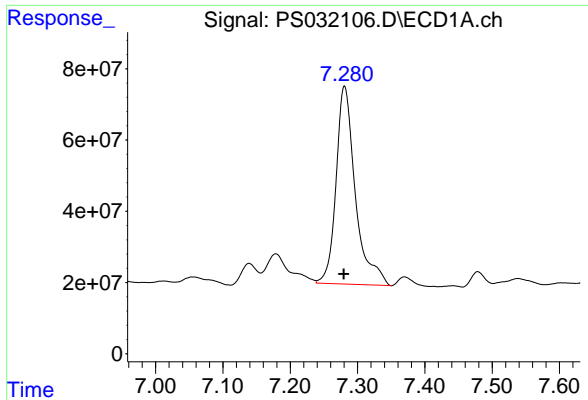
Data Path : Z:\pestpcbsrv\HPCHEM1\ECD\_S\Data\PS102125\  
Data File : PS032106.D  
Signal(s) : Signal #1: ECD1A.ch Signal #2: ECD2B.ch  
Acq On : 21 Oct 2025 18:52  
Operator : AR\AJ  
Sample : Q3381-03  
Misc :  
ALS Vial : 7 Sample Multiplier: 1

Instrument :  
ECD\_S  
ClientSampleId :  
VNJ-245

Integration File signal 1: autoint1.e  
Integration File signal 2: autoint2.e  
Quant Time: Oct 22 14:02:17 2025  
Quant Method : Z:\pestpcbsrv\HPCHEM1\ECD\_S\Method\PS101325.M  
Quant Title : 8080.M  
QLast Update : Mon Oct 13 12:51:14 2025  
Response via : Initial Calibration  
Integrator: ChemStation

Volume Inj. : 1 µl  
Signal #1 Phase : ZB-MR1 Signal #2 Phase: ZB-MR2  
Signal #1 Info : 30M x 0.32mm x 0.5 Signal #2 Info : 30M x 0.32mm x 0.25µm

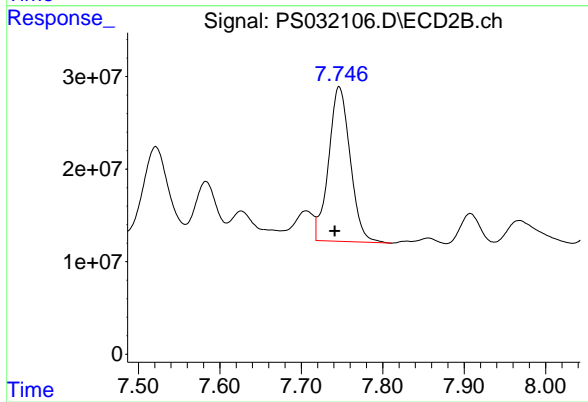




#4 2,4-DCAA

R.T.: 7.281 min  
Delta R.T.: 0.001 min  
Response: 1108356196  
Conc: 232.50 ng/ml

Instrument :  
ECD\_S  
ClientSampleId :  
VNJ-245



#4 2,4-DCAA

R.T.: 7.747 min  
Delta R.T.: 0.006 min  
Response: 307190956  
Conc: 279.18 ng/ml