

Data Path : Z:\pestpcbsrv\HPCHEM1\ECD_S\Data\PS102218\
 Data File : PS002073.D
 Signal(s) : Signal #1: ECD1A.ch Signal #2: ECD2B.ch
 Acq On : 22 Oct 2018 15:28
 Operator : EI\SJ
 Sample : J5538-16
 Misc :
 ALS Vial : 5 Sample Multiplier: 1

Instrument :
 ECD_S
 ClientSampleId :

Integration File signal 1: autoint1.e
 Integration File signal 2: autoint2.e
 Quant Time: Oct 23 05:11:53 2018
 Quant Method : Z:\pestpcbsrv\HPCHEM1\ECD_S\Method\PS101518.M
 Quant Title : 8080.M
 QLast Update : Wed Oct 17 08:59:14 2018
 Response via : Initial Calibration
 Integrator: ChemStation

Volume Inj. : 2 µl
 Signal #1 Phase : Rtx-CLPesticides Signal #2 Phase: Rtx-CLPesticides2
 Signal #1 Info : 30M x 0.32mm x0.5 Signal #2 Info : 30M x 0.32mm x 0.25µm

	Compound	RT#1	RT#2	Resp#1	Resp#2	ng/ml	ng/ml

System Monitoring Compounds							
4) S	2,4-DCAA	11.448	10.939	64301926	62038899	304.169	260.113
Target Compounds							
1) T	Dalapon	2.883	0.000	29172024	0	95.597	N.D. #
3) T	4-Nitroph...	0.000	10.102	0	17316689	N.D.	140.836 #
5) T	DICAMBA	11.825	11.181	6837364	33485114	8.687	40.751 #
6) T	MCPP	12.132	11.495	40971460	19557950	73.170	35.835 #
8) T	DICHLORPROP	0.000	12.290	0	2510796	N.D.	11.462 #
9) T	2,4-D	13.247	12.772	4293896	19952715	16.078	66.773 #
10) T	Pentachlo...	13.693	0.000	22328292	0	7.890	N.D. #
11) T	2,4,5-TP ...	14.541	0.000	17746933	0	16.225	N.D. #
12) T	2,4,5-T	14.896	14.558	19626288	8878629	16.735	8.106 #
13) T	2,4-DB	0.000	15.200	0	111.6E6	N.D.	708.730 #
14) T	DINOSEB	17.141	15.678	70826947	40433699	84.596	45.717 #
15) T	Picloram	16.960	16.834	33401853	138.8E6	19.537	87.501 #
16) T	DCPA	17.597	16.834	111.3E6	138.8E6	80.323	76.718

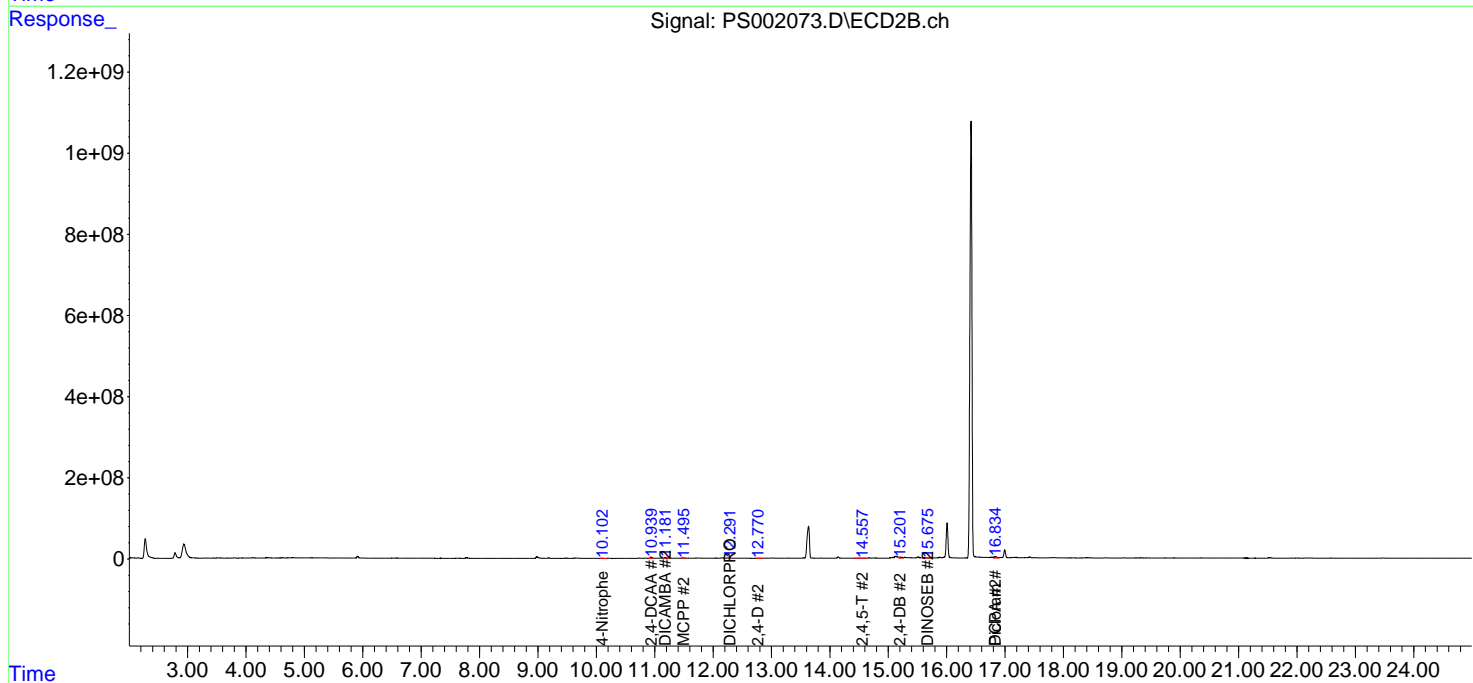
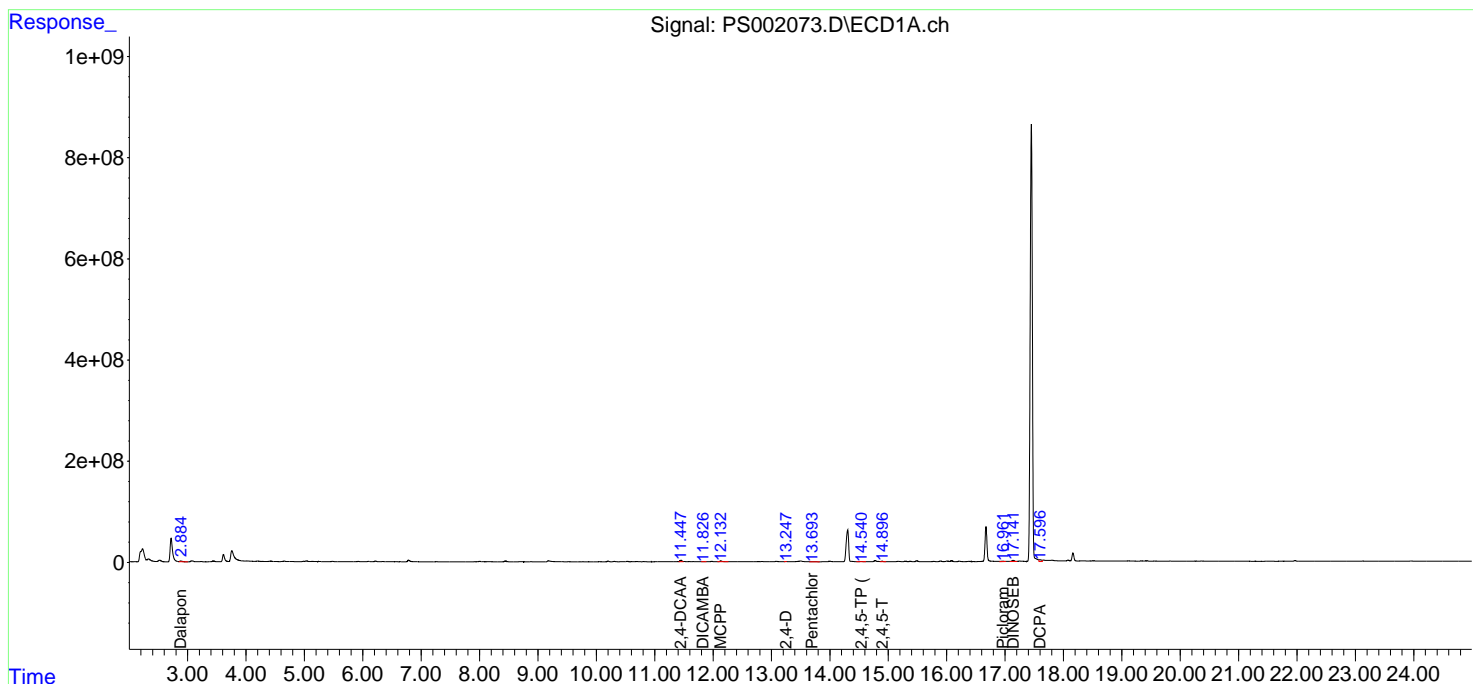
(f)=RT Delta > 1/2 Window (#)=Amounts differ by > 25% (m)=manual int.

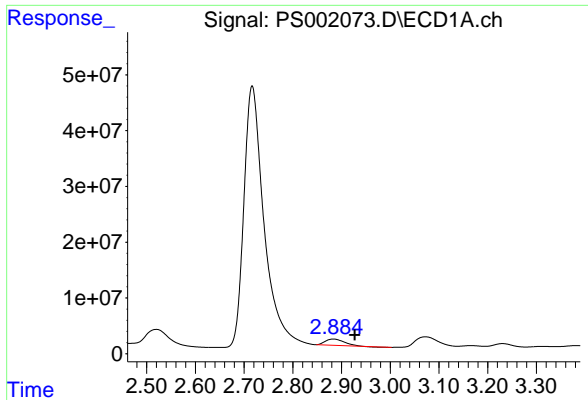
Data Path : Z:\pestpcbsrv\HPCHEM1\ECD_S\Data\PS102218\
 Data File : PS002073.D
 Signal(s) : Signal #1: ECD1A.ch Signal #2: ECD2B.ch
 Acq On : 22 Oct 2018 15:28
 Operator : EI\SJ
 Sample : J5538-16
 Misc :
 ALS Vial : 5 Sample Multiplier: 1

Instrument :
 ECD_S
 ClientSampled :

Integration File signal 1: autoint1.e
 Integration File signal 2: autoint2.e
 Quant Time: Oct 23 05:11:53 2018
 Quant Method : Z:\pestpcbsrv\HPCHEM1\ECD_S\Method\PS101518.M
 Quant Title : 8080.M
 QLast Update : Wed Oct 17 08:59:14 2018
 Response via : Initial Calibration
 Integrator: ChemStation

Volume Inj. : 2 µl
 Signal #1 Phase : Rtx-CLPesticides Signal #2 Phase: Rtx-CLPesticides2
 Signal #1 Info : 30M x 0.32mm x0.5 Signal #2 Info : 30M x 0.32mm x 0.25µm

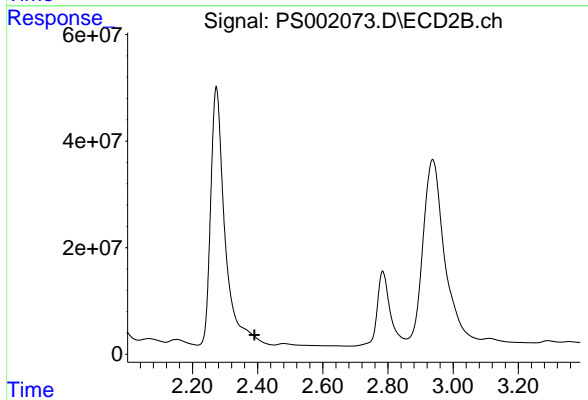




#1 Dalapon

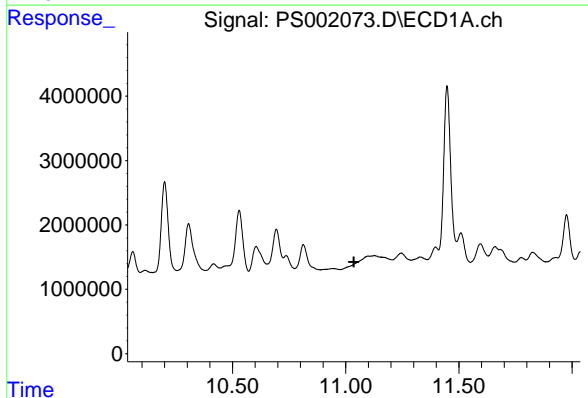
R.T.: 2.883 min
Delta R.T.: -0.044 min
Response: 29172024
Conc: 95.60 ng/ml

Instrument :
ECD_S
ClientSampled :



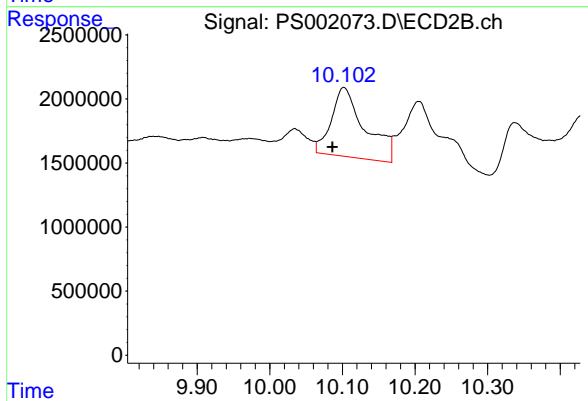
#1 Dalapon

R.T.: 0.000 min
Exp R.T. : 2.390 min
Response: 0
Conc: N.D.



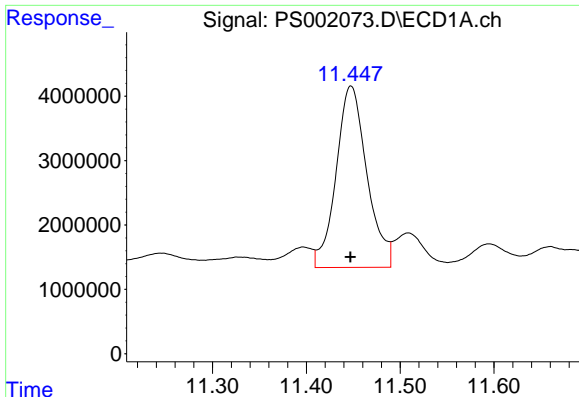
#3 4-Nitrophenol

R.T.: 0.000 min
Exp R.T. : 11.036 min
Response: 0
Conc: N.D.



#3 4-Nitrophenol

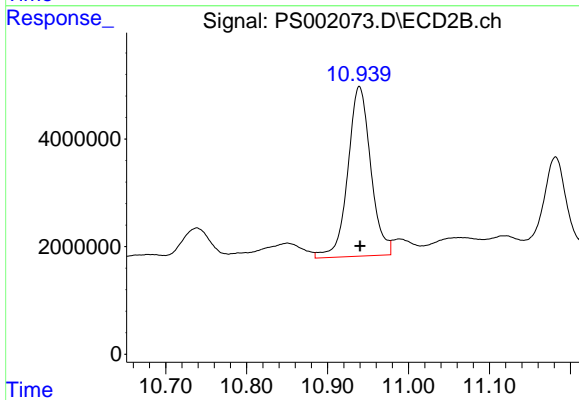
R.T.: 10.102 min
Delta R.T.: 0.016 min
Response: 17316689
Conc: 140.84 ng/ml



#4 2,4-DCAA

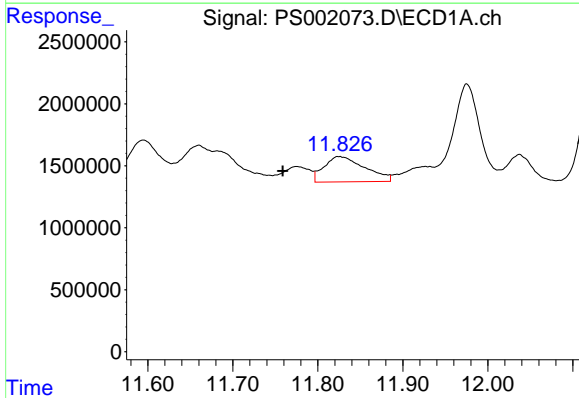
R.T.: 11.448 min
 Delta R.T.: 0.000 min
 Response: 64301926
 Conc: 304.17 ng/ml

Instrument :
 ECD_S
 ClientSampleId :



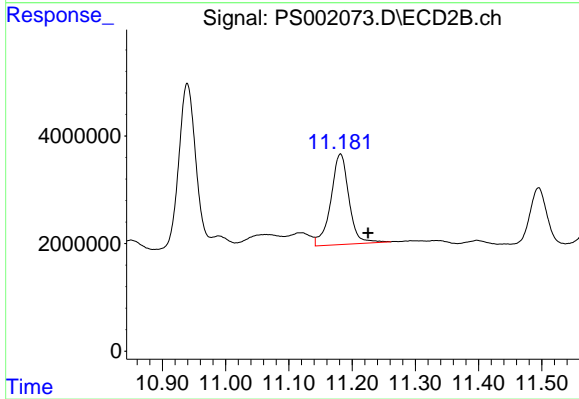
#4 2,4-DCAA

R.T.: 10.939 min
 Delta R.T.: 0.000 min
 Response: 62038899
 Conc: 260.11 ng/ml



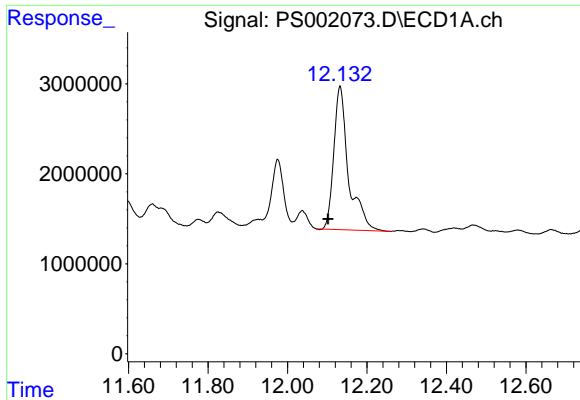
#5 DICAMBA

R.T.: 11.825 min
 Delta R.T.: 0.067 min
 Response: 6837364
 Conc: 8.69 ng/ml



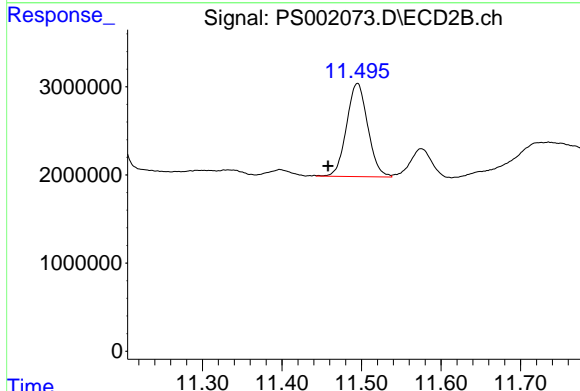
#5 DICAMBA

R.T.: 11.181 min
 Delta R.T.: -0.044 min
 Response: 33485114
 Conc: 40.75 ng/ml

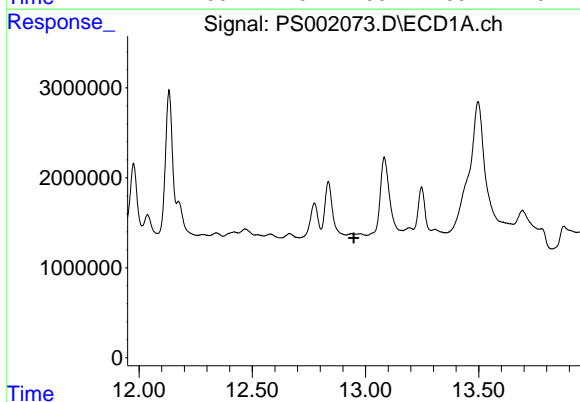


#6 MCPP
 R.T.: 12.132 min
 Delta R.T.: 0.030 min
 Response: 40971460
 Conc: 73.17 ug/ml

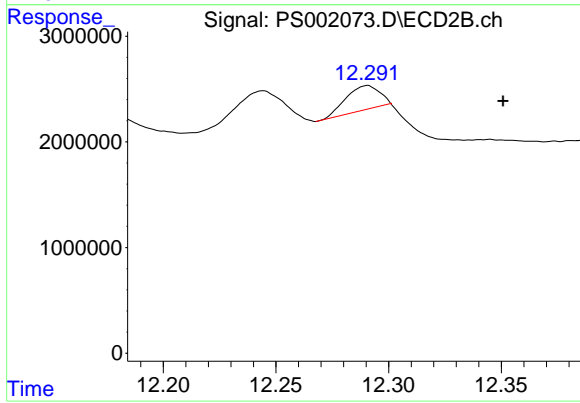
Instrument :
 ECD_S
 ClientSampleId :



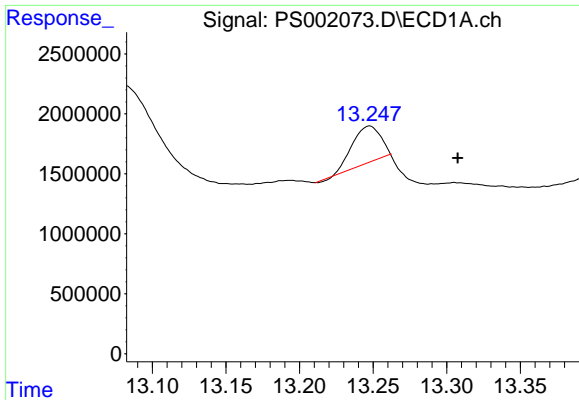
#6 MCPP
 R.T.: 11.495 min
 Delta R.T.: 0.037 min
 Response: 19557950
 Conc: 35.83 ug/ml



#8 DICHLORPROP
 R.T.: 0.000 min
 Exp R.T. : 12.949 min
 Response: 0
 Conc: N.D.

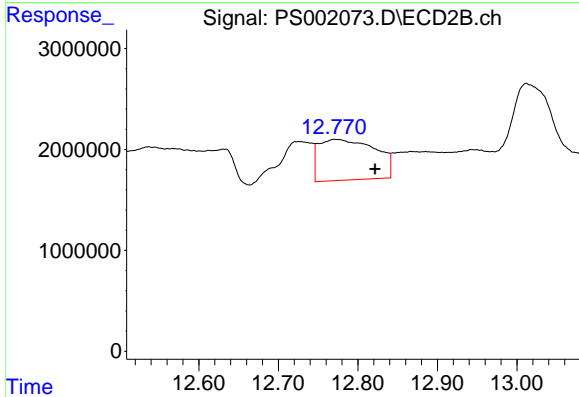


#8 DICHLORPROP
 R.T.: 12.290 min
 Delta R.T.: -0.060 min
 Response: 2510796
 Conc: 11.46 ng/ml

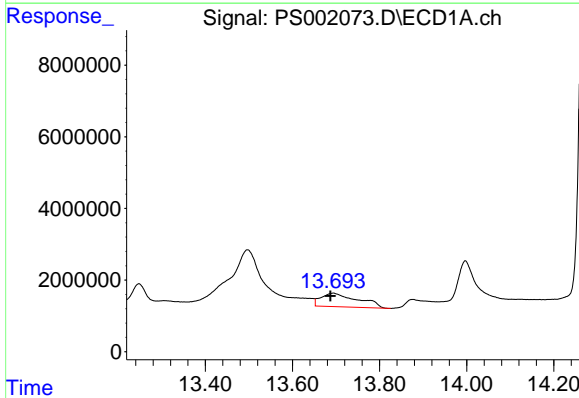


#9 2,4-D
 R.T.: 13.247 min
 Delta R.T.: -0.060 min
 Response: 4293896
 Conc: 16.08 ng/ml

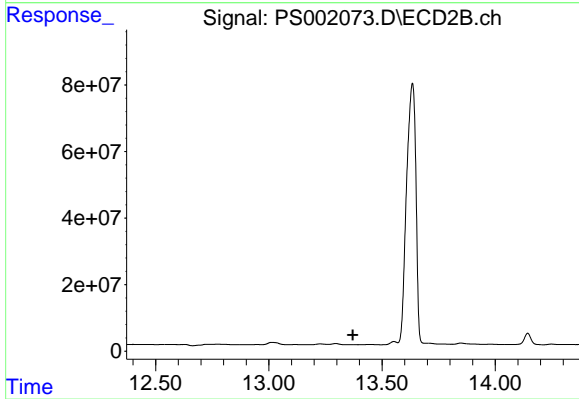
Instrument :
 ECD_S
 ClientSampleId :



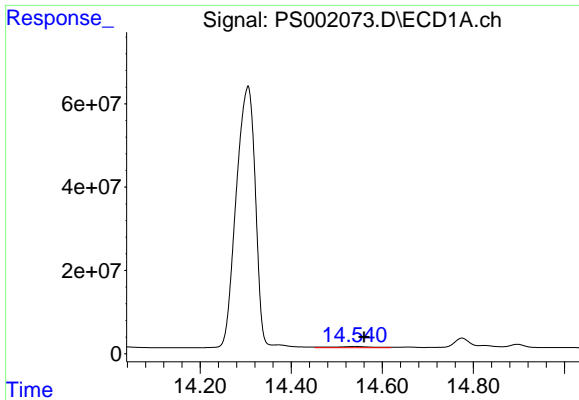
#9 2,4-D
 R.T.: 12.772 min
 Delta R.T.: -0.050 min
 Response: 19952715
 Conc: 66.77 ng/ml



#10 Pentachlorophenol
 R.T.: 13.693 min
 Delta R.T.: 0.006 min
 Response: 22328292
 Conc: 7.89 ng/ml

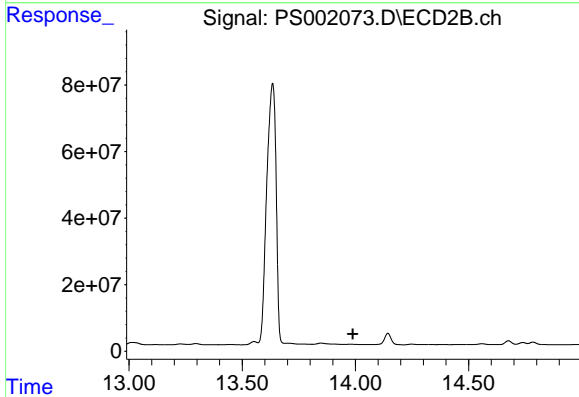


#10 Pentachlorophenol
 R.T.: 0.000 min
 Exp R.T. : 13.371 min
 Response: 0
 Conc: N.D.

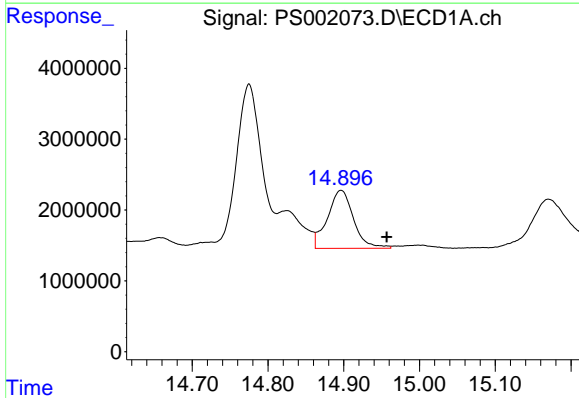


#11 2,4,5-TP (SILVEX)
 R.T.: 14.541 min
 Delta R.T.: -0.019 min
 Response: 17746933
 Conc: 16.22 ng/ml

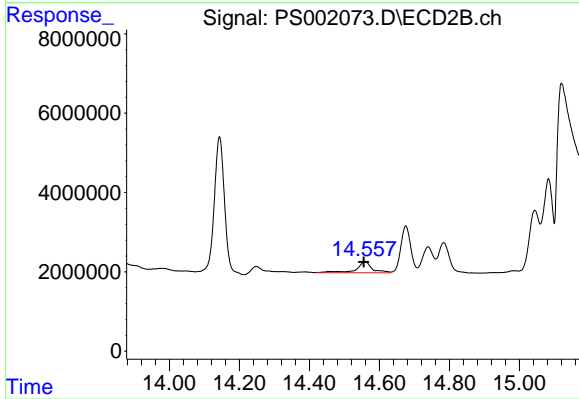
Instrument :
 ECD_S
 ClientSampleId :



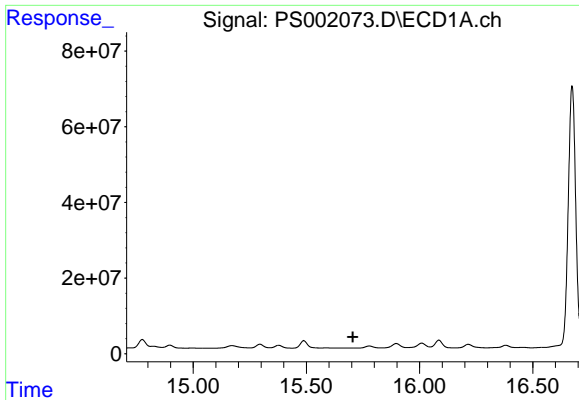
#11 2,4,5-TP (SILVEX)
 R.T.: 0.000 min
 Exp R.T. : 13.988 min
 Response: 0
 Conc: N.D.



#12 2,4,5-T
 R.T.: 14.896 min
 Delta R.T.: -0.060 min
 Response: 19626288
 Conc: 16.74 ng/ml



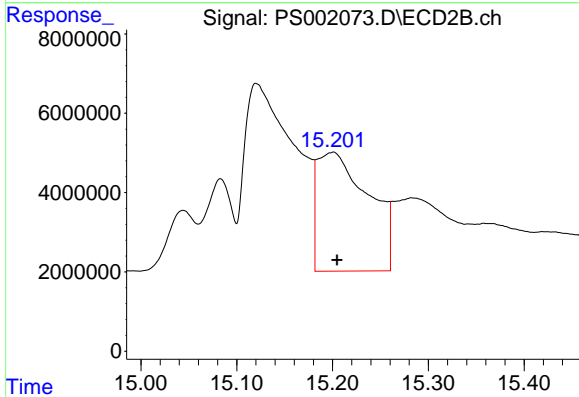
#12 2,4,5-T
 R.T.: 14.558 min
 Delta R.T.: 0.003 min
 Response: 8878629
 Conc: 8.11 ng/ml



#13 2,4-DB

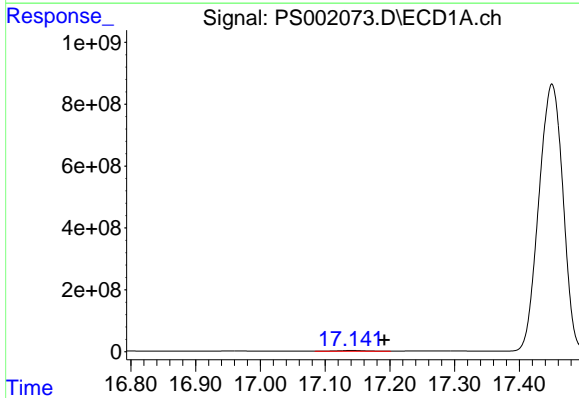
R.T.: 0.000 min
 Exp R.T.: 15.705 min
 Response: 0
 Conc: N.D.

Instrument :
 ECD_S
 ClientSampled :



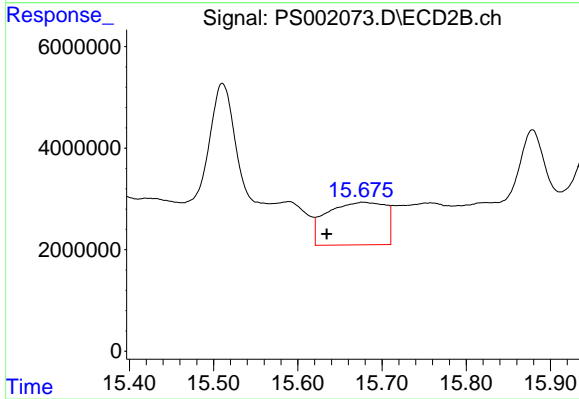
#13 2,4-DB

R.T.: 15.200 min
 Delta R.T.: -0.005 min
 Response: 111570998
 Conc: 708.73 ng/ml



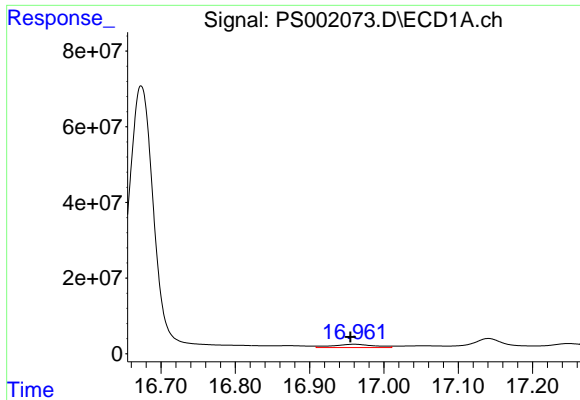
#14 DINOSEB

R.T.: 17.141 min
 Delta R.T.: -0.051 min
 Response: 70826947
 Conc: 84.60 ng/ml



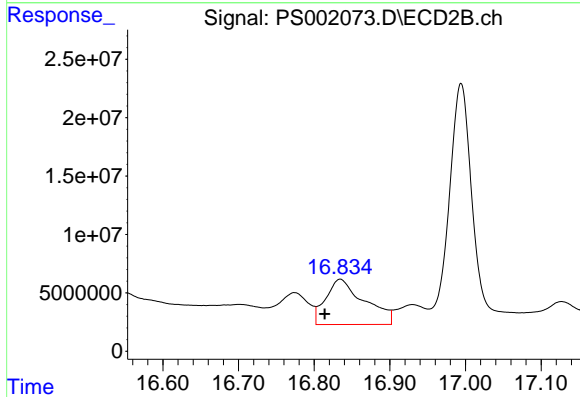
#14 DINOSEB

R.T.: 15.678 min
 Delta R.T.: 0.044 min
 Response: 40433699
 Conc: 45.72 ng/ml

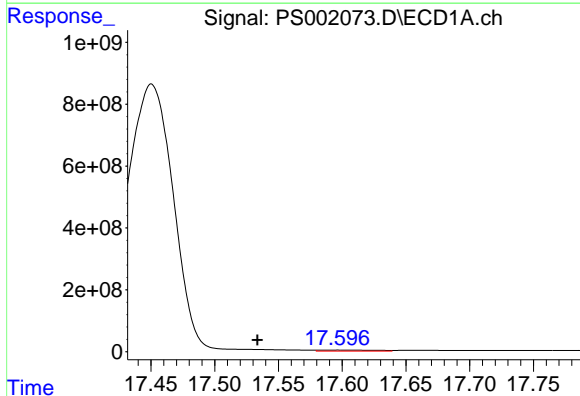


#15 Picloram
 R.T.: 16.960 min
 Delta R.T.: 0.005 min
 Response: 33401853
 Conc: 19.54 ng/ml

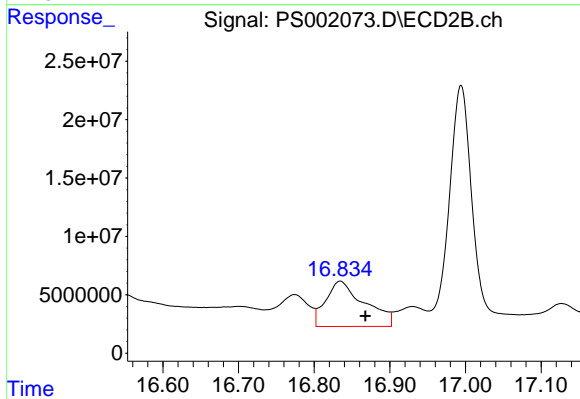
Instrument :
 ECD_S
 ClientSampled :



#15 Picloram
 R.T.: 16.834 min
 Delta R.T.: 0.020 min
 Response: 138798219
 Conc: 87.50 ng/ml



#16 DCPA
 R.T.: 17.597 min
 Delta R.T.: 0.063 min
 Response: 111337572
 Conc: 80.32 ng/ml



#16 DCPA
 R.T.: 16.834 min
 Delta R.T.: -0.033 min
 Response: 138798219
 Conc: 76.72 ng/ml