

Data Path : Z:\pestpcbsrv\HPCHEM1\ECD\_S\Data\PS102419\  
 Data File : PS007287.D  
 Signal(s) : Signal #1: ECD1A.ch Signal #2: ECD2B.ch  
 Acq On : 24 Oct 2019 11:49  
 Operator : SM\AJ  
 Sample : K5493-01  
 Misc :  
 ALS Vial : 6 Sample Multiplier: 1

Instrument :  
 ECD\_S  
 ClientSampleId :

Integration File signal 1: autoint1.e  
 Integration File signal 2: autoint2.e  
 Quant Time: Oct 24 13:08:30 2019  
 Quant Method : Z:\pestpcbsrv\HPCHEM1\ECD\_S\Method\PS101419.M  
 Quant Title : 8080.M  
 QLast Update : Mon Oct 14 13:54:23 2019  
 Response via : Initial Calibration  
 Integrator: ChemStation

Volume Inj. : 2 µl  
 Signal #1 Phase : Rtx-CLPesticides Signal #2 Phase: Rtx-CLPesticides2  
 Signal #1 Info : 30M x 0.32mm x0.5 Signal #2 Info : 30M x 0.32mm x 0.25µm

| Compound                    | RT#1  | RT#2  | Resp#1   | Resp#2   | ng/ml   | ng/ml     |
|-----------------------------|-------|-------|----------|----------|---------|-----------|
| -----                       |       |       |          |          |         |           |
| System Monitoring Compounds |       |       |          |          |         |           |
| 4) S 2,4-DCAA               | 5.464 | 5.174 | 154.8E6  | 91002333 | 113.072 | 129.392   |
| Target Compounds            |       |       |          |          |         |           |
| 1) T Dalapon                | 2.016 | 1.708 | 67601519 | 290.4E6  | 40.401  | 319.145 # |
| 2) T 3,5-DICHL...           | 0.000 | 4.452 | 0        | 7965498  | N.D.    | 9.258     |
| 3) T 4-Nitroph...           | 0.000 | 4.847 | 0        | 8212362  | N.D.    | 20.796    |
| 5) T DICAMBA                | 5.552 | 0.000 | 55314765 | 0        | 11.258  | N.D. #    |
| 7) T MCPA                   | 0.000 | 5.541 | 0        | 15781006 | N.D.    | 5.428     |
| 9) T 2,4-D                  | 0.000 | 6.076 | 0        | 12929526 | N.D.    | 16.207    |
| 11) T 2,4,5-TP ...          | 0.000 | 6.772 | 0        | 55188203 | N.D.    | 14.509    |
| 12) T 2,4,5-T               | 7.429 | 0.000 | 150.1E6  | 0        | 19.633  | N.D. #    |
| 14) T DINOSEB               | 0.000 | 7.965 | 0        | 6673701  | N.D.    | 2.377     |
| 15) T Picloram              | 0.000 | 8.941 | 0        | 18694137 | N.D.    | 3.045     |
| -----                       |       |       |          |          |         |           |

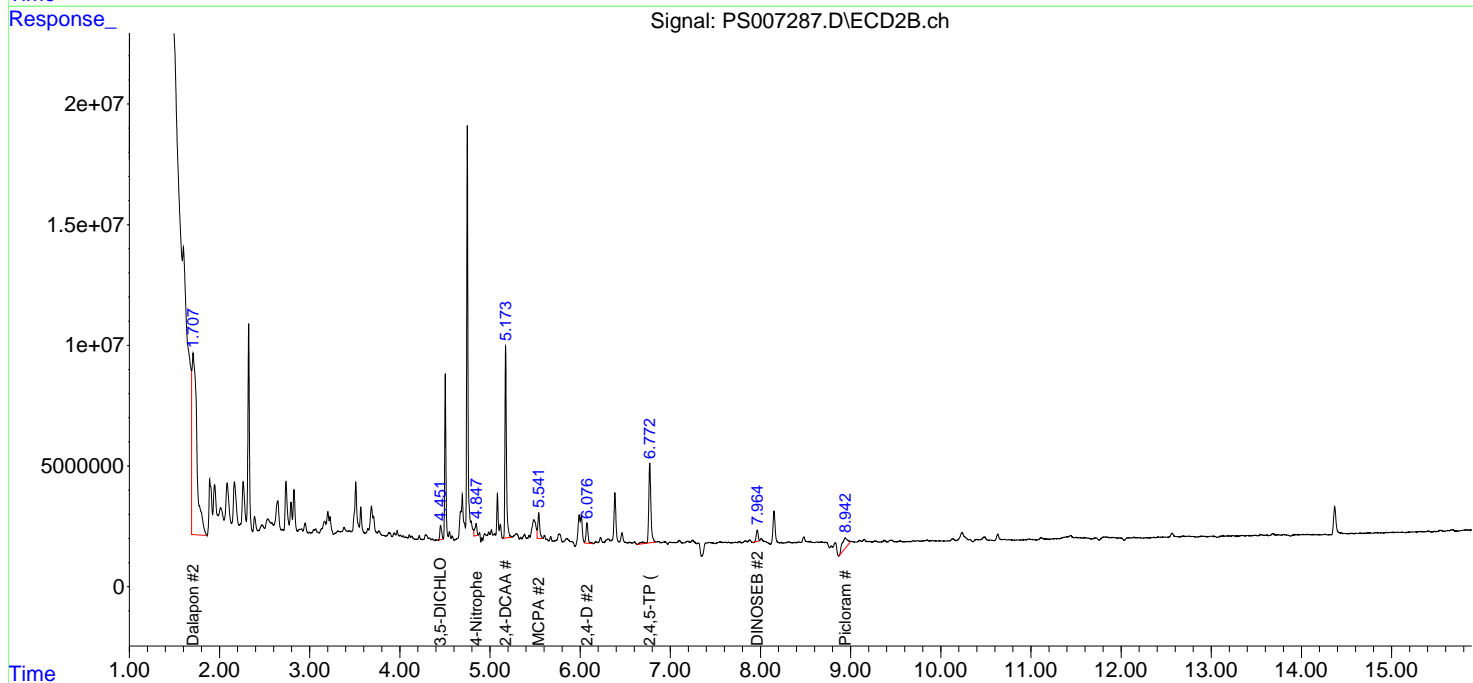
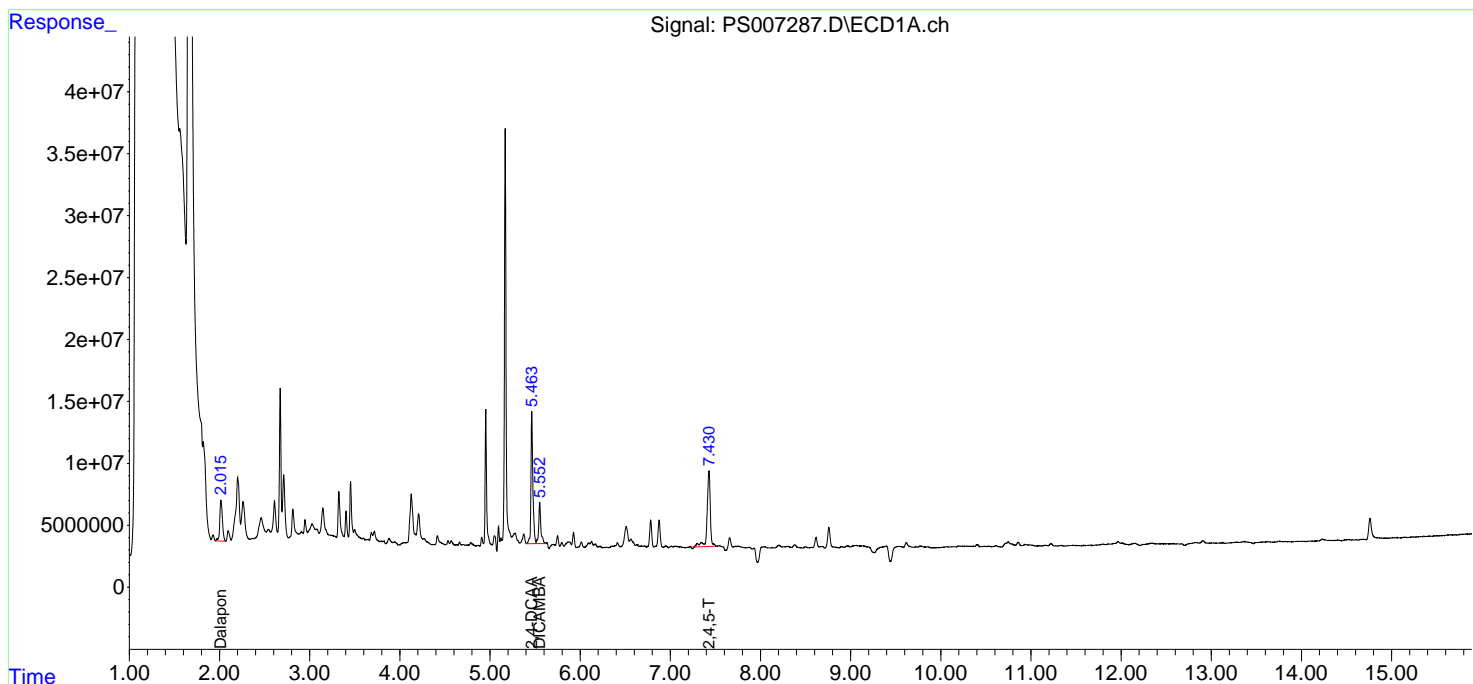
(f)=RT Delta > 1/2 Window (#)=Amounts differ by > 25% (m)=manual int.

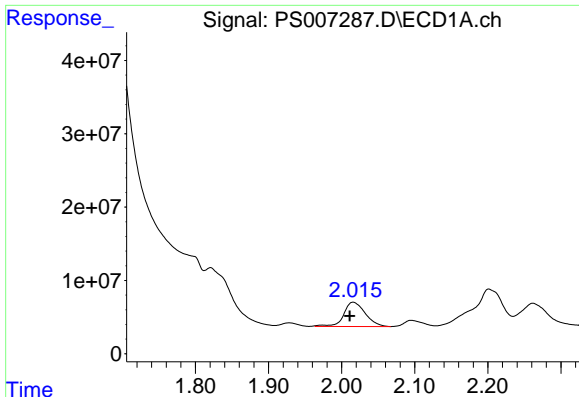
Data Path : Z:\pestpcbsrv\HPCHEM1\ECD\_S\Data\PS102419\  
 Data File : PS007287.D  
 Signal(s) : Signal #1: ECD1A.ch Signal #2: ECD2B.ch  
 Acq On : 24 Oct 2019 11:49  
 Operator : SM\AJ  
 Sample : K5493-01  
 Misc :  
 ALS Vial : 6 Sample Multiplier: 1

Instrument :  
 ECD\_S  
 ClientSampled :

Integration File signal 1: autoint1.e  
 Integration File signal 2: autoint2.e  
 Quant Time: Oct 24 13:08:30 2019  
 Quant Method : Z:\pestpcbsrv\HPCHEM1\ECD\_S\Method\PS101419.M  
 Quant Title : 8080.M  
 QLast Update : Mon Oct 14 13:54:23 2019  
 Response via : Initial Calibration  
 Integrator: ChemStation

Volume Inj. : 2 µl  
 Signal #1 Phase : Rtx-CLPesticides Signal #2 Phase: Rtx-CLPesticides2  
 Signal #1 Info : 30M x 0.32mm x 0.5 Signal #2 Info : 30M x 0.32mm x 0.25µm

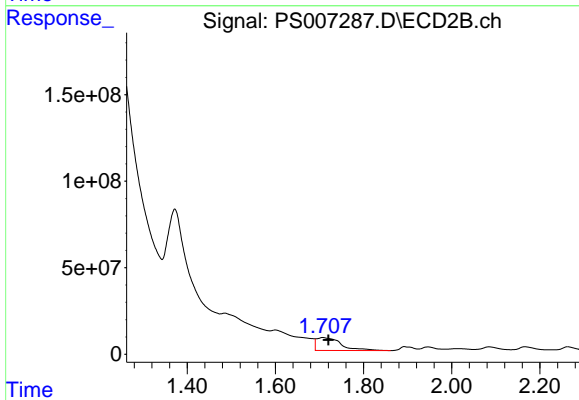




#1 Dalapon

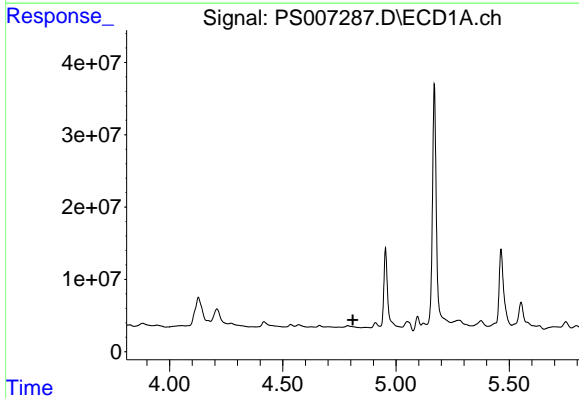
R.T.: 2.016 min  
 Delta R.T.: 0.005 min  
 Response: 67601519  
 Conc: 40.40 ng/ml

Instrument :  
 ECD\_S  
 ClientSampleId :



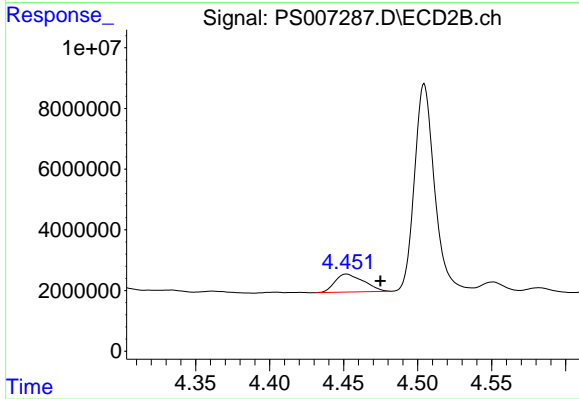
#1 Dalapon

R.T.: 1.708 min  
 Delta R.T.: -0.013 min  
 Response: 290423362  
 Conc: 319.15 ng/ml



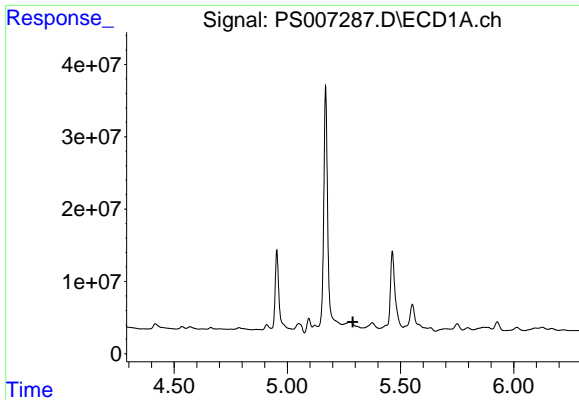
#2 3,5-DICHLOROBENZOIC ACID

R.T.: 0.000 min  
 Exp R.T. : 4.810 min  
 Response: 0  
 Conc: N.D.



#2 3,5-DICHLOROBENZOIC ACID

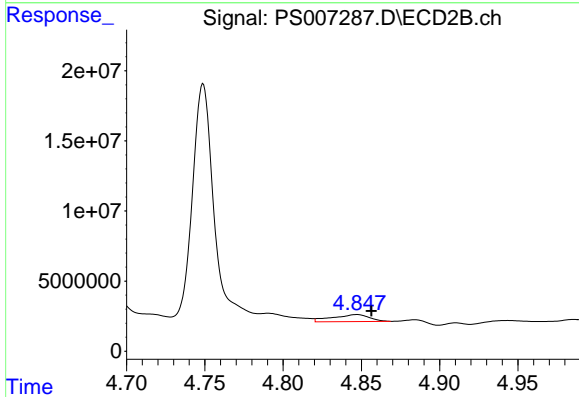
R.T.: 4.452 min  
 Delta R.T.: -0.022 min  
 Response: 7965498  
 Conc: 9.26 ng/ml



#3 4-Nitrophenol

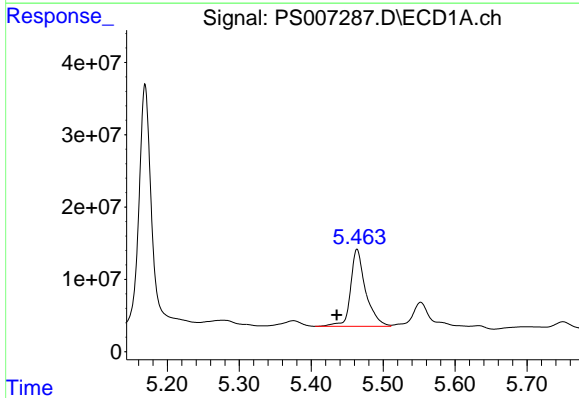
R.T.: 0.000 min  
 Exp R.T.: 5.290 min  
 Response: 0  
 Conc: N.D.

Instrument :  
 ECD\_S  
 ClientSampleId :



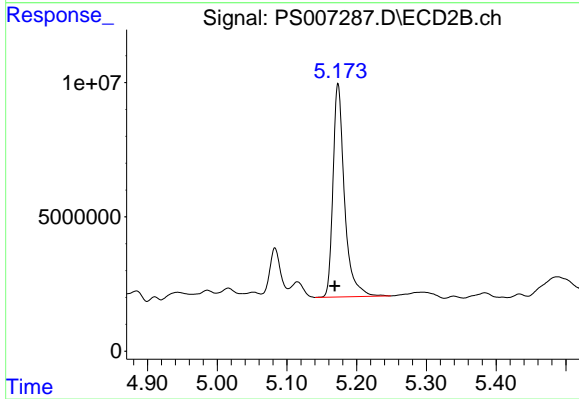
#3 4-Nitrophenol

R.T.: 4.847 min  
 Delta R.T.: -0.010 min  
 Response: 8212362  
 Conc: 20.80 ng/ml



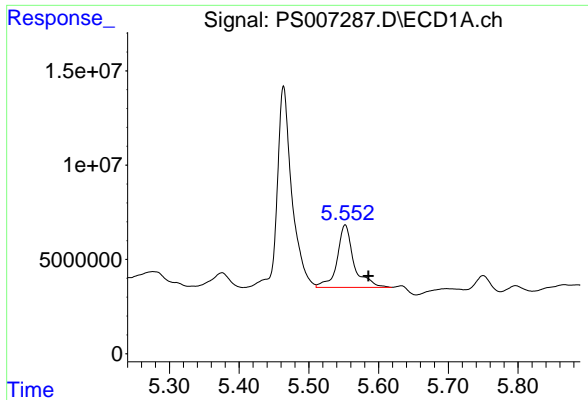
#4 2,4-DCAA

R.T.: 5.464 min  
 Delta R.T.: 0.028 min  
 Response: 154758121  
 Conc: 113.07 ng/ml



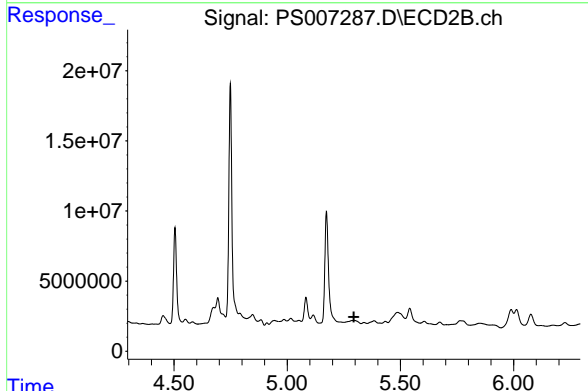
#4 2,4-DCAA

R.T.: 5.174 min  
 Delta R.T.: 0.005 min  
 Response: 91002333  
 Conc: 129.39 ng/ml

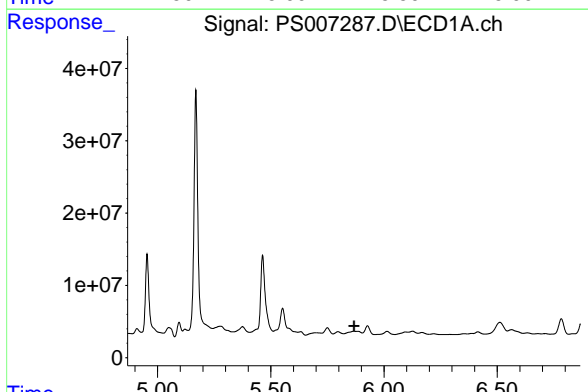


#5 DICAMBA  
 R.T.: 5.552 min  
 Delta R.T.: -0.033 min  
 Response: 55314765  
 Conc: 11.26 ng/ml

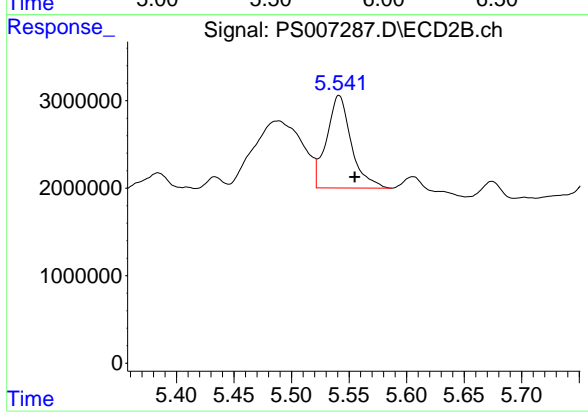
Instrument :  
 ECD\_S  
 ClientSampled :



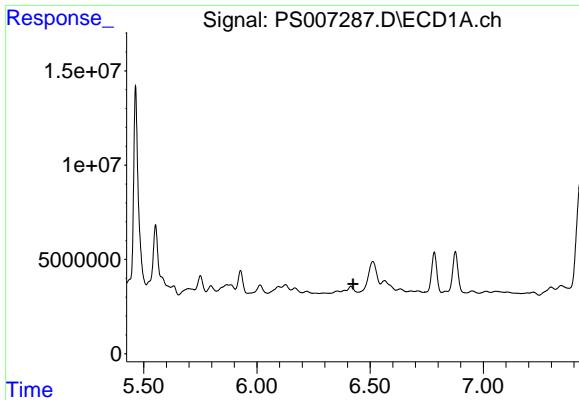
#5 DICAMBA  
 R.T.: 0.000 min  
 Exp R.T. : 5.294 min  
 Response: 0  
 Conc: N.D.



#7 MCPA  
 R.T.: 0.000 min  
 Exp R.T. : 5.867 min  
 Response: 0  
 Conc: N.D.

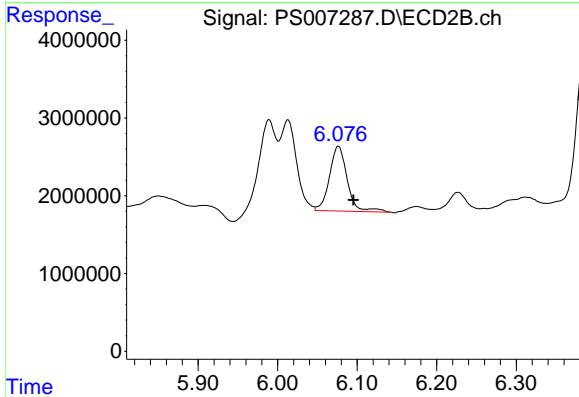


#7 MCPA  
 R.T.: 5.541 min  
 Delta R.T.: -0.014 min  
 Response: 15781006  
 Conc: 5.43 ug/ml

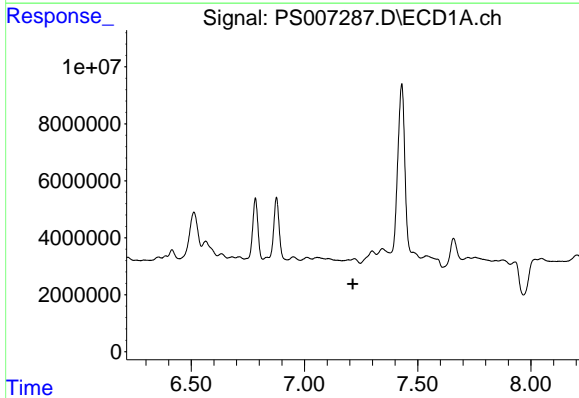


#9 2,4-D  
 R.T.: 0.000 min  
 Exp R.T.: 6.424 min  
 Response: 0  
 Conc: N.D.

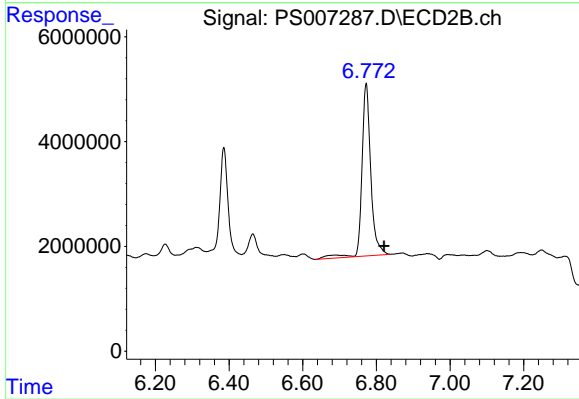
Instrument :  
 ECD\_S  
 ClientSampleId :



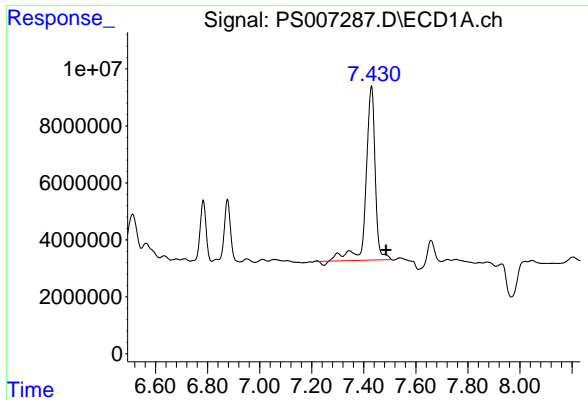
#9 2,4-D  
 R.T.: 6.076 min  
 Delta R.T.: -0.019 min  
 Response: 12929526  
 Conc: 16.21 ng/ml



#11 2,4,5-TP (SILVEX)  
 R.T.: 0.000 min  
 Exp R.T.: 7.214 min  
 Response: 0  
 Conc: N.D.

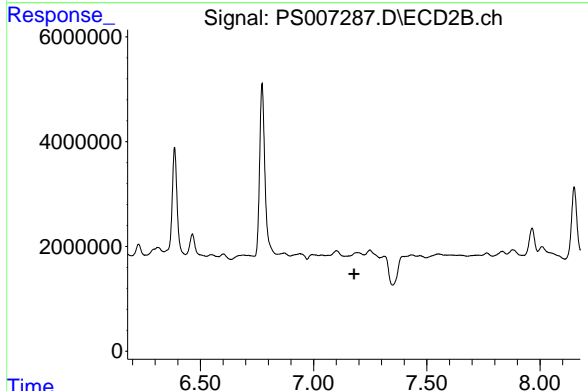


#11 2,4,5-TP (SILVEX)  
 R.T.: 6.772 min  
 Delta R.T.: -0.048 min  
 Response: 55188203  
 Conc: 14.51 ng/ml

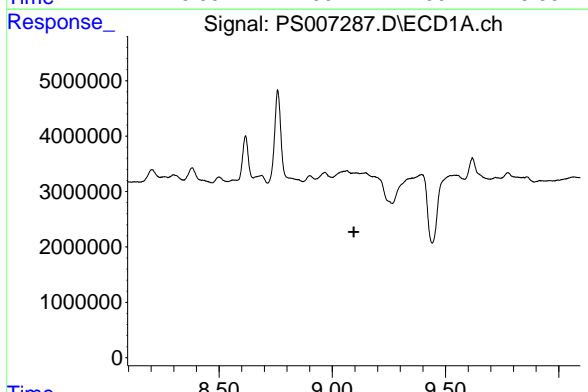


#12 2,4,5-T  
 R.T.: 7.429 min  
 Delta R.T.: -0.057 min  
 Response: 150091151  
 Conc: 19.63 ng/ml

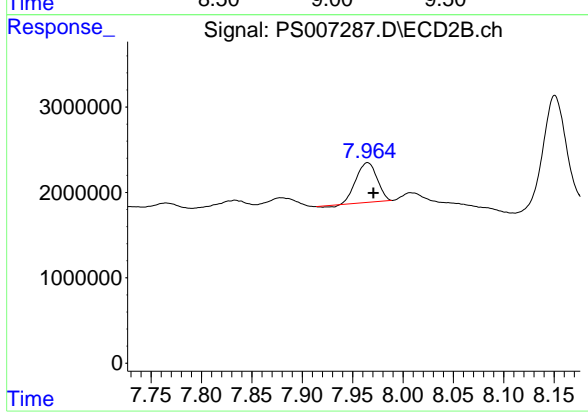
Instrument :  
 ECD\_S  
 ClientSampled :



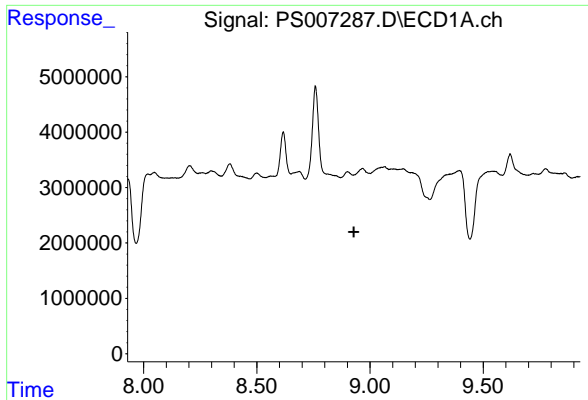
#12 2,4,5-T  
 R.T.: 0.000 min  
 Exp R.T. : 7.178 min  
 Response: 0  
 Conc: N.D.



#14 DINOSEB  
 R.T.: 0.000 min  
 Exp R.T. : 9.095 min  
 Response: 0  
 Conc: N.D.



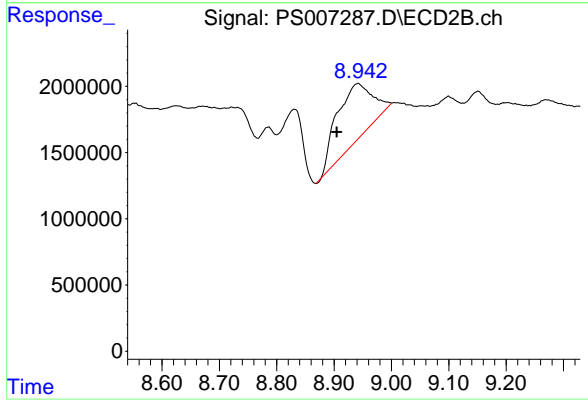
#14 DINOSEB  
 R.T.: 7.965 min  
 Delta R.T.: -0.006 min  
 Response: 6673701  
 Conc: 2.38 ng/ml



#15 Picloram

R.T.: 0.000 min  
Exp R.T. : 8.929 min  
Response: 0  
Conc: N.D.

Instrument :  
ECD\_S  
ClientSampleId :



#15 Picloram

R.T.: 8.941 min  
Delta R.T.: 0.037 min  
Response: 18694137  
Conc: 3.04 ng/ml