

Data Path : Z:\pestpcbsrv\HPCHEM1\ECD_S\Data\PS102419\
 Data File : PS007291.D
 Signal(s) : Signal #1: ECD1A.ch Signal #2: ECD2B.ch
 Acq On : 24 Oct 2019 13:17
 Operator : SM\AJ
 Sample : K5494-04
 Misc :
 ALS Vial : 10 Sample Multiplier: 1

Instrument :
 ECD_S
 ClientSampleId :

Integration File signal 1: autoint1.e
 Integration File signal 2: autoint2.e
 Quant Time: Oct 24 17:51:04 2019
 Quant Method : Z:\pestpcbsrv\HPCHEM1\ECD_S\Method\PS101419.M
 Quant Title : 8080.M
 QLast Update : Mon Oct 14 13:54:23 2019
 Response via : Initial Calibration
 Integrator: ChemStation

Volume Inj. : 2 µl
 Signal #1 Phase : Rtx-CLPesticides Signal #2 Phase: Rtx-CLPesticides2
 Signal #1 Info : 30M x 0.32mm x0.5 Signal #2 Info : 30M x 0.32mm x 0.25µm

	Compound	RT#1	RT#2	Resp#1	Resp#2	ng/ml	ng/ml

System Monitoring Compounds							
4) S	2,4-DCAA	5.451	5.179	426.0E6	214.5E6	311.243	305.037
Target Compounds							
1) T	Dalapon	2.004	1.675	186.1E6	2240.4E6	111.242	2461.982 #
2) T	3,5-DICHL...	0.000	4.458	0	15181169	N.D.	17.644
3) T	4-Nitroph...	0.000	4.856	0	16531241	N.D.	41.862
5) T	DICAMBA	5.545	0.000	85887977	0	17.480	N.D. #
6) T	MCP P	0.000	5.394	0	4251847	N.D.	2.242
7) T	MCPA	0.000	5.572	0	56822052	N.D.	19.546
8) T	DICHLORPROP	0.000	5.889	0	13084421	N.D.	20.092
9) T	2,4-D	0.000	6.084	0	14904280	N.D.	18.682
10) T	Pentachlo...	0.000	6.473	0	6882921	N.D.	<MDL
11) T	2,4,5-TP ...	0.000	6.852	0	6871053	N.D.	1.806
12) T	2,4,5-T	7.420	7.179	212.2E6	22238340	27.752	6.347 #
13) T	2,4-DB	0.000	7.612	0	13667704	N.D.	29.161
14) T	DINOSEB	0.000	8.007	0	17367541	N.D.	6.186
15) T	Picloram	0.000	8.949	0	22353579	N.D.	3.641

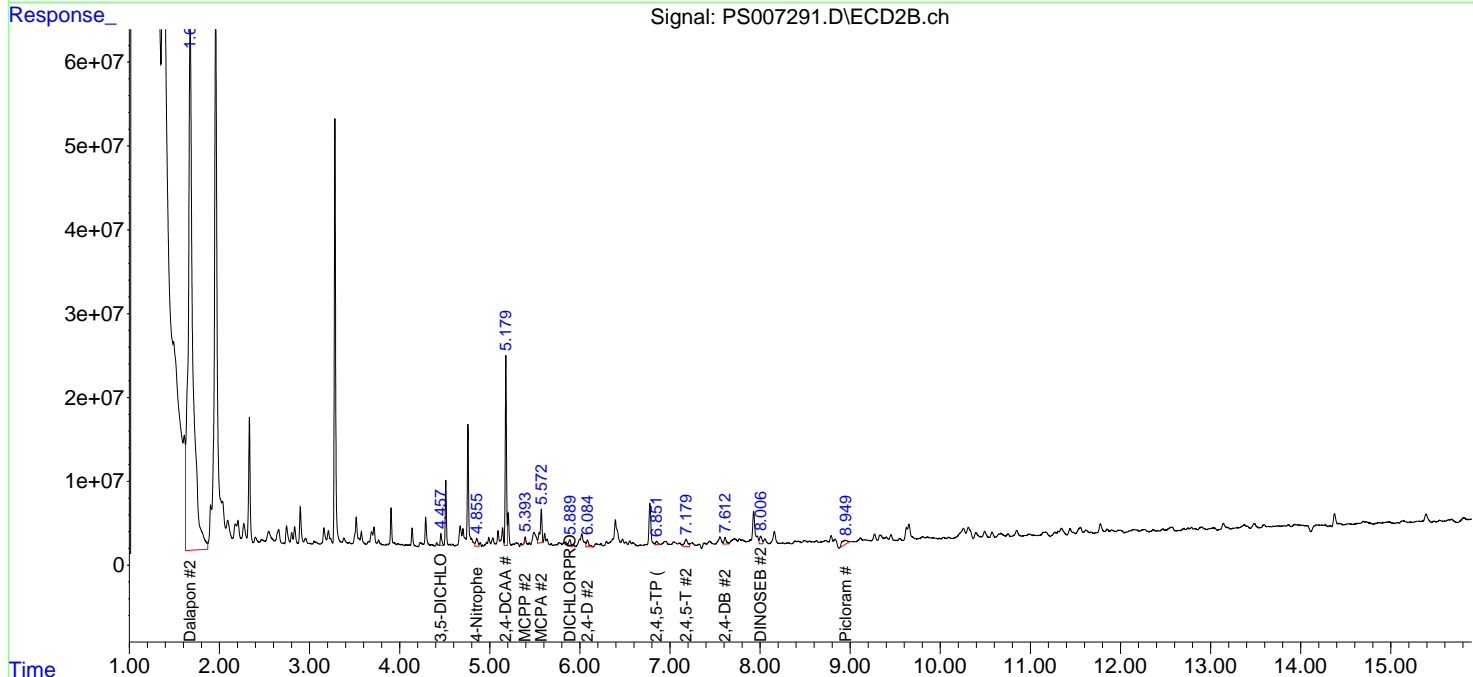
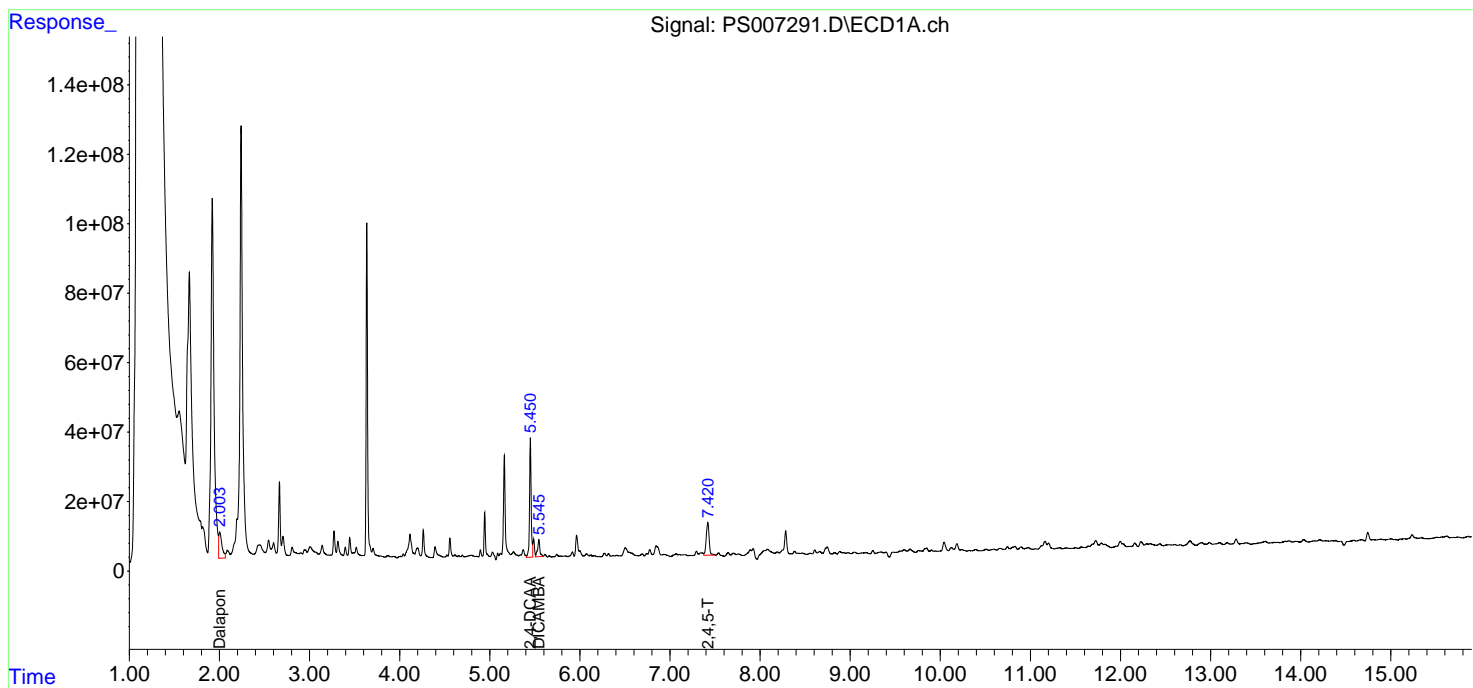
(f)=RT Delta > 1/2 Window (#)=Amounts differ by > 25% (m)=manual int.

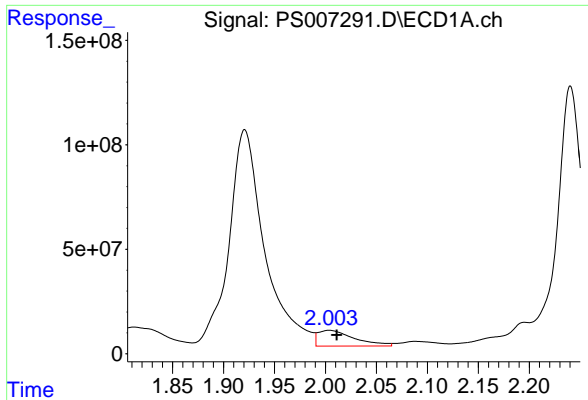
Data Path : Z:\pestpcbsrv\HPCHEM1\ECD_S\Data\PS102419\
 Data File : PS007291.D
 Signal(s) : Signal #1: ECD1A.ch Signal #2: ECD2B.ch
 Acq On : 24 Oct 2019 13:17
 Operator : SM\AJ
 Sample : K5494-04
 Misc :
 ALS Vial : 10 Sample Multiplier: 1

Instrument :
 ECD_S
 ClientSampled :

Integration File signal 1: autoint1.e
 Integration File signal 2: autoint2.e
 Quant Time: Oct 24 17:51:04 2019
 Quant Method : Z:\pestpcbsrv\HPCHEM1\ECD_S\Method\PS101419.M
 Quant Title : 8080.M
 QLast Update : Mon Oct 14 13:54:23 2019
 Response via : Initial Calibration
 Integrator: ChemStation

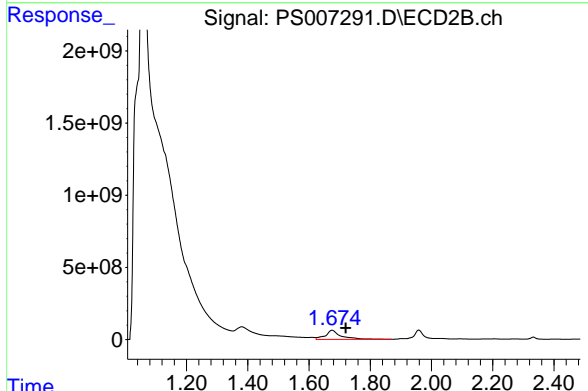
Volume Inj. : 2 µl
 Signal #1 Phase : Rtx-CLPesticides Signal #2 Phase: Rtx-CLPesticides2
 Signal #1 Info : 30M x 0.32mm x 0.5 Signal #2 Info : 30M x 0.32mm x 0.25µm



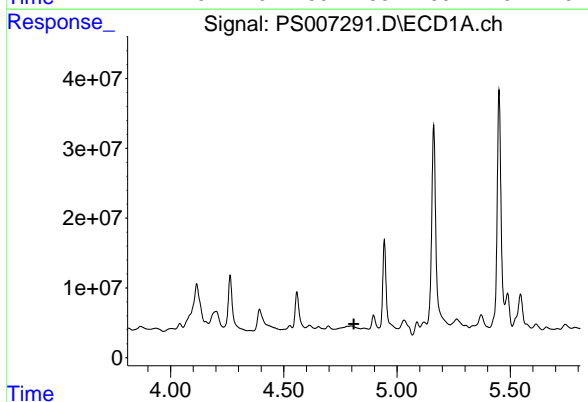


#1 Dalapon
 R.T.: 2.004 min
 Delta R.T.: -0.007 min
 Response: 186139112
 Conc: 111.24 ng/ml

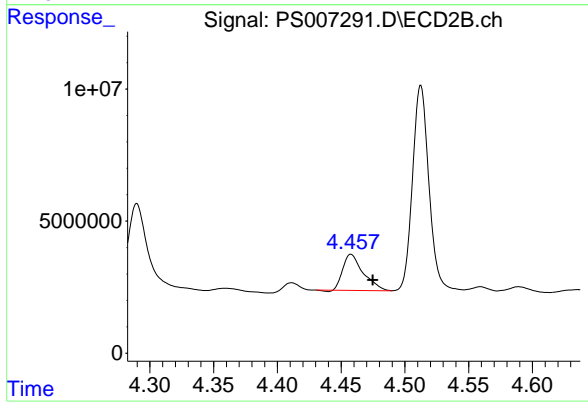
Instrument :
 ECD_S
 ClientSampleId :



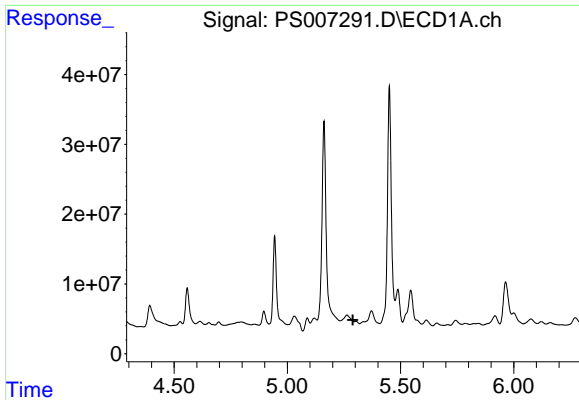
#1 Dalapon
 R.T.: 1.675 min
 Delta R.T.: -0.045 min
 Response: 2240412333
 Conc: 2461.98 ng/ml



#2 3,5-DICHLOROBENZOIC ACID
 R.T.: 0.000 min
 Exp R.T. : 4.810 min
 Response: 0
 Conc: N.D.



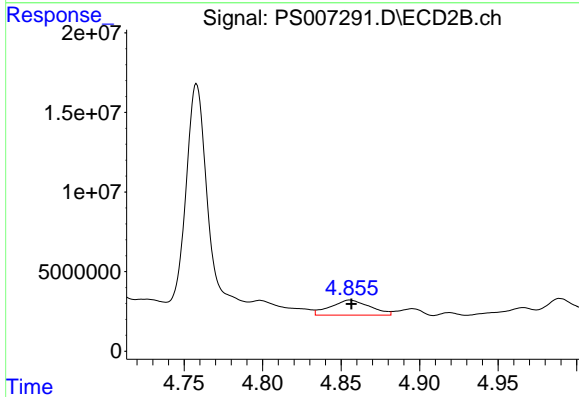
#2 3,5-DICHLOROBENZOIC ACID
 R.T.: 4.458 min
 Delta R.T.: -0.017 min
 Response: 15181169
 Conc: 17.64 ng/ml



#3 4-Nitrophenol

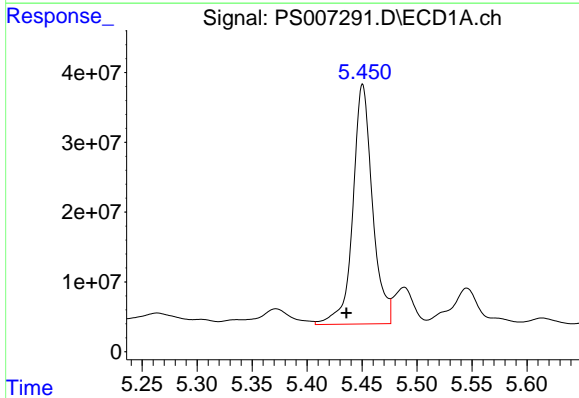
R.T.: 0.000 min
 Exp R.T.: 5.290 min
 Response: 0
 Conc: N.D.

Instrument :
 ECD_S
 ClientSampleId :



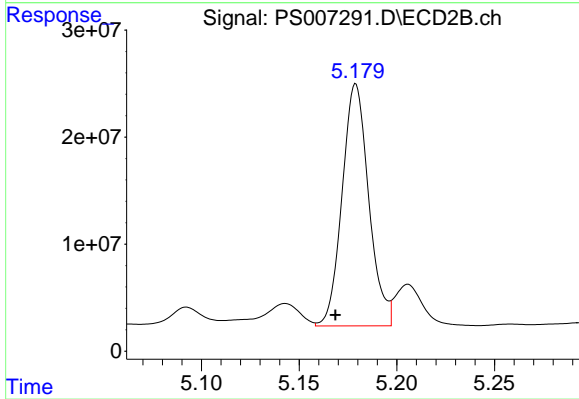
#3 4-Nitrophenol

R.T.: 4.856 min
 Delta R.T.: 0.000 min
 Response: 16531241
 Conc: 41.86 ng/ml



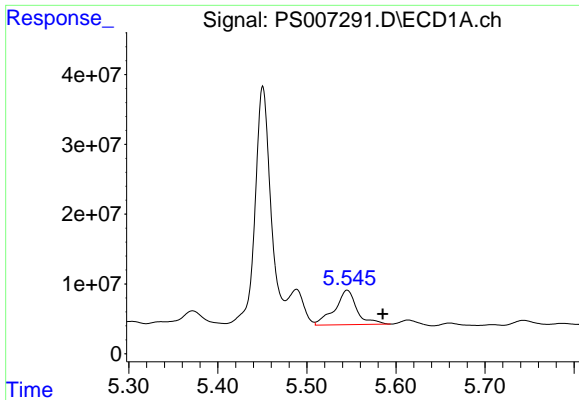
#4 2,4-DCAA

R.T.: 5.451 min
 Delta R.T.: 0.015 min
 Response: 425988574
 Conc: 311.24 ng/ml



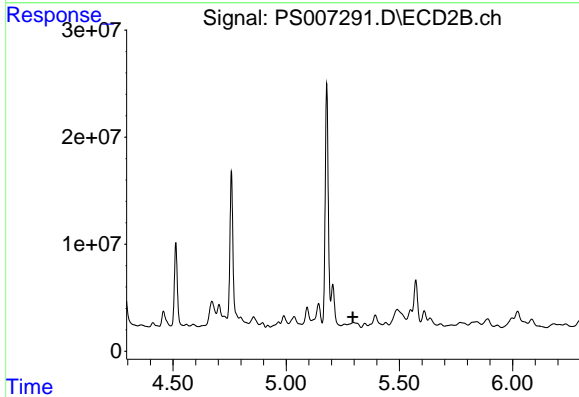
#4 2,4-DCAA

R.T.: 5.179 min
 Delta R.T.: 0.010 min
 Response: 214534817
 Conc: 305.04 ng/ml

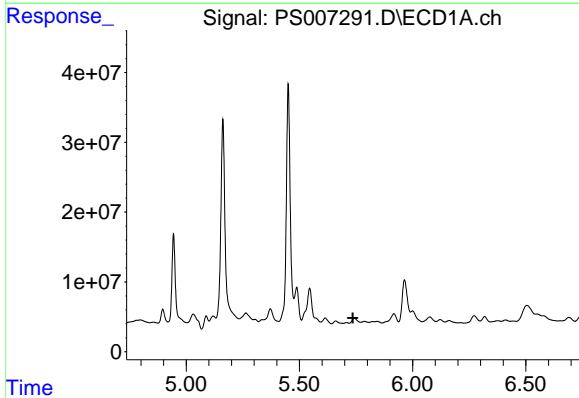


#5 DICAMBA
 R.T.: 5.545 min
 Delta R.T.: -0.040 min
 Response: 85887977
 Conc: 17.48 ng/ml

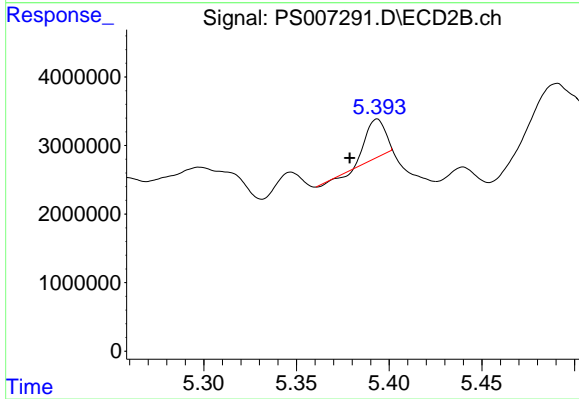
Instrument :
 ECD_S
 ClientSampled :



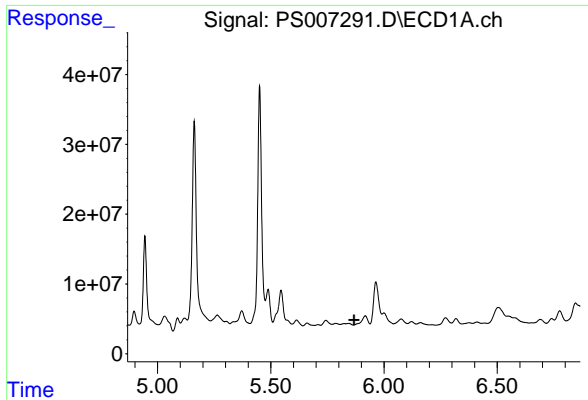
#5 DICAMBA
 R.T.: 0.000 min
 Exp R.T. : 5.294 min
 Response: 0
 Conc: N.D.



#6 MCP
 R.T.: 0.000 min
 Exp R.T. : 5.736 min
 Response: 0
 Conc: N.D.

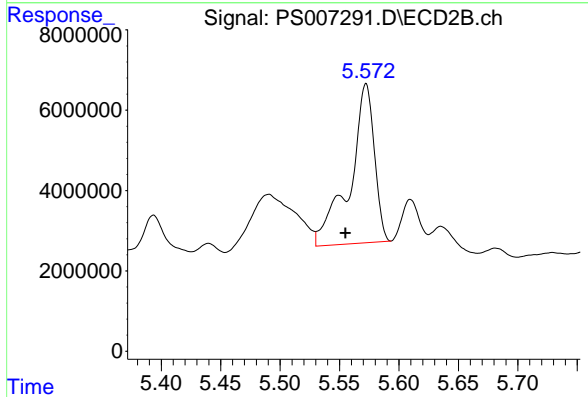


#6 MCP
 R.T.: 5.394 min
 Delta R.T.: 0.015 min
 Response: 4251847
 Conc: 2.24 ug/ml

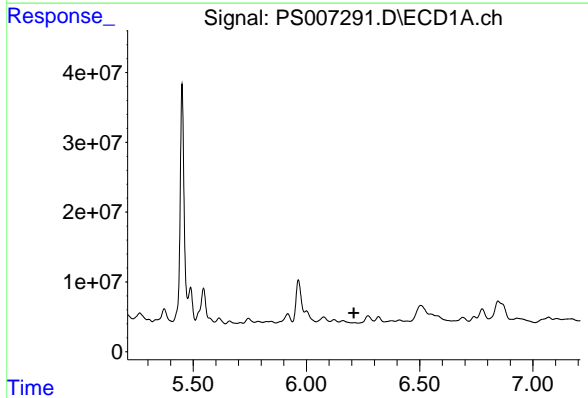


#7 MCPA
 R.T.: 0.000 min
 Exp R.T.: 5.867 min
 Response: 0
 Conc: N.D.

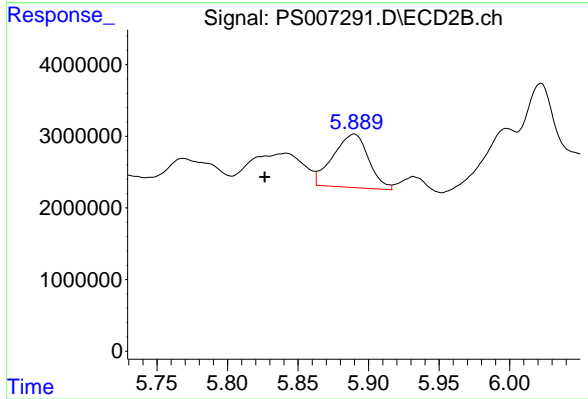
Instrument :
 ECD_S
 ClientSampled :



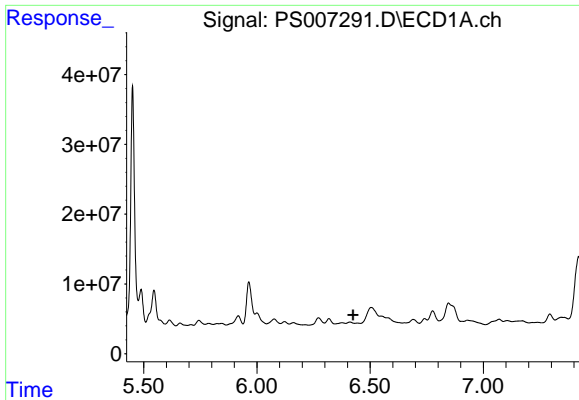
#7 MCPA
 R.T.: 5.572 min
 Delta R.T.: 0.017 min
 Response: 56822052
 Conc: 19.55 ug/ml



#8 DICHLORPROP
 R.T.: 0.000 min
 Exp R.T.: 6.209 min
 Response: 0
 Conc: N.D.



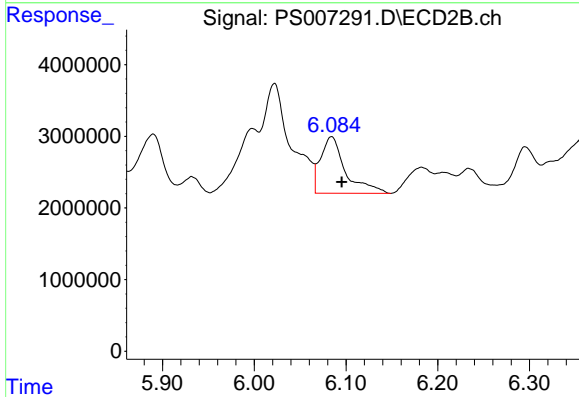
#8 DICHLORPROP
 R.T.: 5.889 min
 Delta R.T.: 0.063 min
 Response: 13084421
 Conc: 20.09 ng/ml



#9 2,4-D

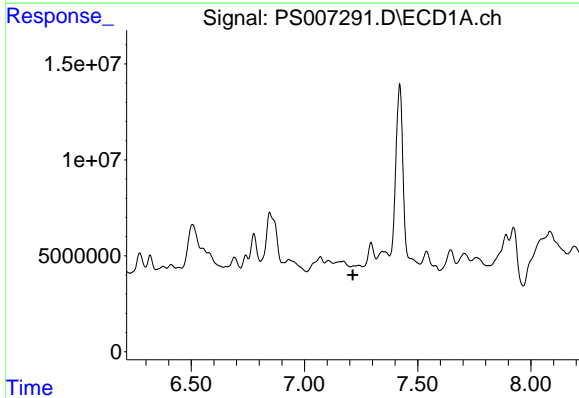
R.T.: 0.000 min
 Exp R.T.: 6.424 min
 Response: 0
 Conc: N.D.

Instrument :
 ECD_S
 ClientSampleId :



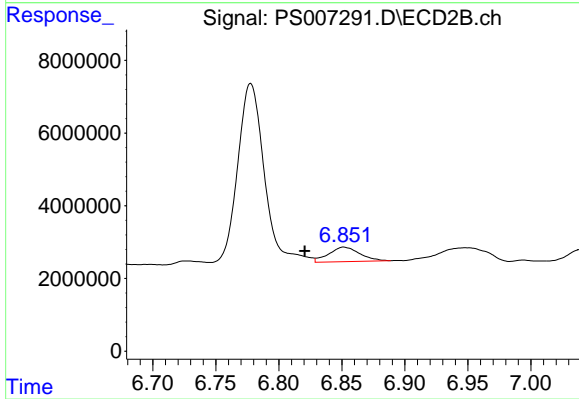
#9 2,4-D

R.T.: 6.084 min
 Delta R.T.: -0.011 min
 Response: 14904280
 Conc: 18.68 ng/ml



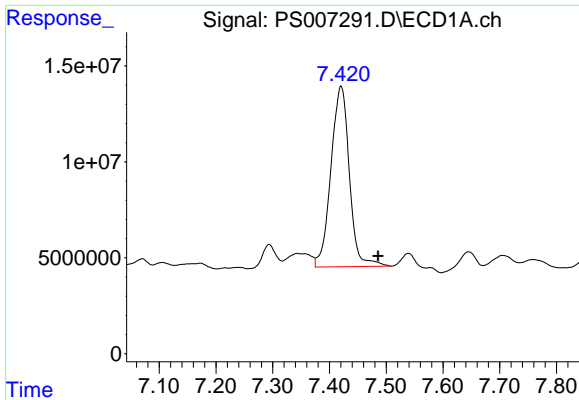
#11 2,4,5-TP (SILVEX)

R.T.: 0.000 min
 Exp R.T.: 7.214 min
 Response: 0
 Conc: N.D.



#11 2,4,5-TP (SILVEX)

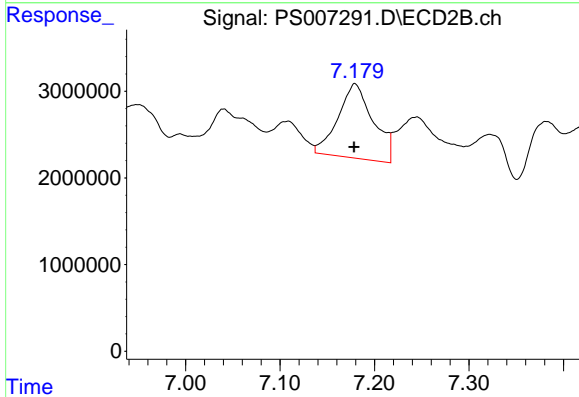
R.T.: 6.852 min
 Delta R.T.: 0.031 min
 Response: 6871053
 Conc: 1.81 ng/ml



#12 2,4,5-T

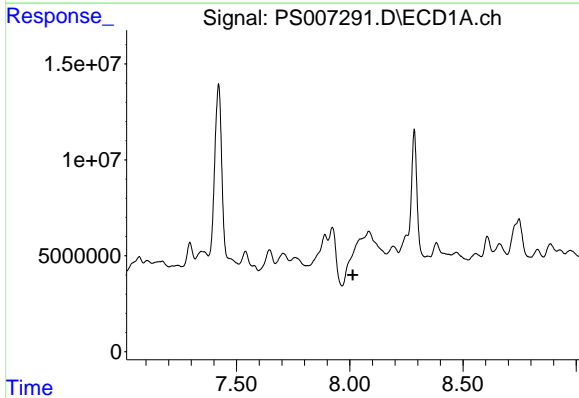
R.T.: 7.420 min
 Delta R.T.: -0.065 min
 Response: 212160257
 Conc: 27.75 ng/ml

Instrument :
 ECD_S
 ClientSampleId :



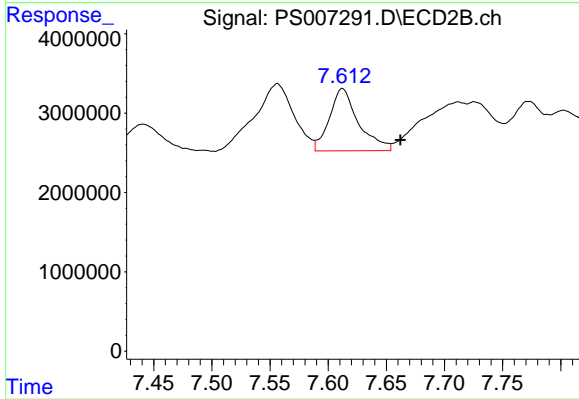
#12 2,4,5-T

R.T.: 7.179 min
 Delta R.T.: 0.001 min
 Response: 22238340
 Conc: 6.35 ng/ml



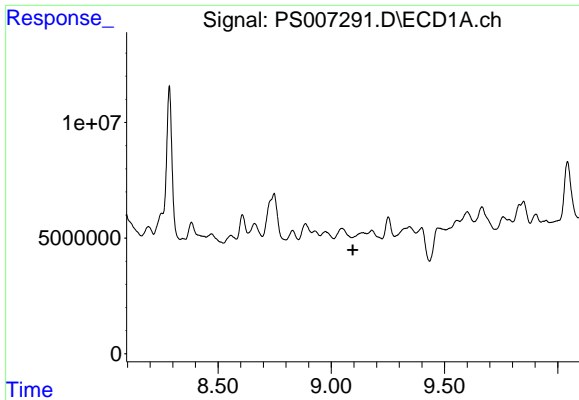
#13 2,4-DB

R.T.: 0.000 min
 Exp R.T. : 8.014 min
 Response: 0
 Conc: N.D.



#13 2,4-DB

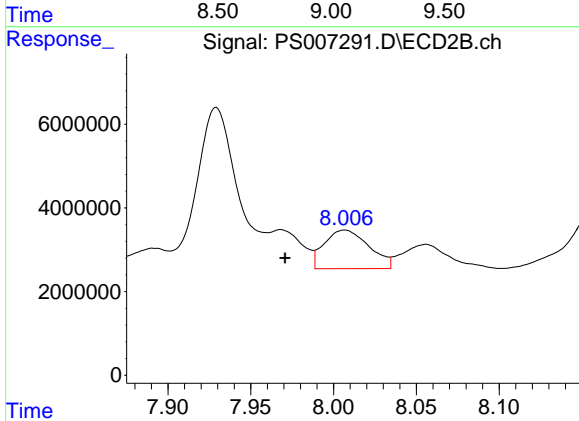
R.T.: 7.612 min
 Delta R.T.: -0.050 min
 Response: 13667704
 Conc: 29.16 ng/ml



#14 DINOSEB

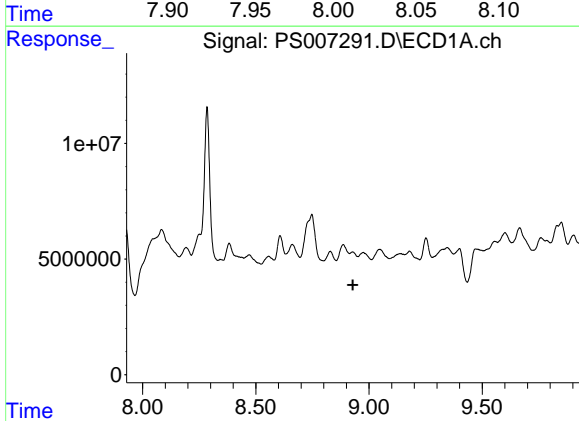
R.T.: 0.000 min
 Exp R.T.: 9.095 min
 Response: 0
 Conc: N.D.

Instrument :
 ECD_S
 ClientSampleId :



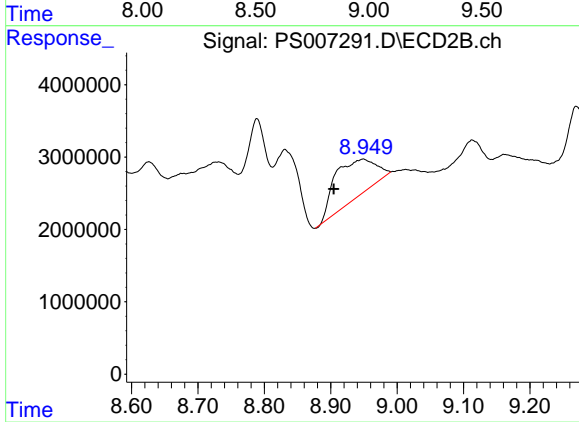
#14 DINOSEB

R.T.: 8.007 min
 Delta R.T.: 0.036 min
 Response: 17367541
 Conc: 6.19 ng/ml



#15 Picloram

R.T.: 0.000 min
 Exp R.T.: 8.929 min
 Response: 0
 Conc: N.D.



#15 Picloram

R.T.: 8.949 min
 Delta R.T.: 0.044 min
 Response: 22353579
 Conc: 3.64 ng/ml