

Data Path : Z:\pestpcbsrv\HPCHEM1\ECD\_S\Data\PS102419\  
 Data File : PS007297.D  
 Signal(s) : Signal #1: ECD1A.ch Signal #2: ECD2B.ch  
 Acq On : 24 Oct 2019 15:28  
 Operator : SM\AJ  
 Sample : K5494-08  
 Misc :  
 ALS Vial : 14 Sample Multiplier: 1

Instrument :  
 ECD\_S  
 ClientSampleId :

Integration File signal 1: autoint1.e  
 Integration File signal 2: autoint2.e  
 Quant Time: Oct 24 17:52:25 2019  
 Quant Method : Z:\pestpcbsrv\HPCHEM1\ECD\_S\Method\PS101419.M  
 Quant Title : 8080.M  
 QLast Update : Mon Oct 14 13:54:23 2019  
 Response via : Initial Calibration  
 Integrator: ChemStation

Volume Inj. : 2 µl  
 Signal #1 Phase : Rtx-CLPesticides Signal #2 Phase: Rtx-CLPesticides2  
 Signal #1 Info : 30M x 0.32mm x0.5 Signal #2 Info : 30M x 0.32mm x 0.25µm

Compound	RT#1	RT#2	Resp#1	Resp#2	ng/ml	ng/ml
-----						
System Monitoring Compounds						
4) S 2,4-DCAA	5.438	5.166	321.6E6	164.4E6	235.007	233.758
Target Compounds						
1) T Dalapon	1.992	1.663	154.7E6	2059.4E6	92.464	2263.100 #
2) T 3,5-DICHL...	0.000	4.500	0	58524370	N.D.	68.017
3) T 4-Nitroph...	5.359	4.842	28652327	12714772	47.716	32.198 #
5) T DICAMBA	5.533	0.000	78310879	0	15.938	N.D. #
6) T MCPP	0.000	5.380	0	8515599	N.D.	4.489
7) T MCPA	5.839	5.559	23469385	57649703	4.550	19.830 #
8) T DICHLORPROP	0.000	5.874	0	8687488	N.D.	13.340
9) T 2,4-D	0.000	6.070	0	14437736	N.D.	18.097
10) T Pentachlo...	0.000	6.457	0	11253587	N.D.	1.170
11) T 2,4,5-TP ...	0.000	6.765	0	65263811	N.D.	17.158
13) T 2,4-DB	8.055	7.664	209.8E6	16342890	219.990	34.869 #
14) T DINOSEB	0.000	7.995	0	21969025	N.D.	7.826
15) T Picloram	0.000	8.902	0	13638152	N.D.	2.221
16) T DCPA	0.000	8.902	0	13638152	N.D.	2.720
-----						

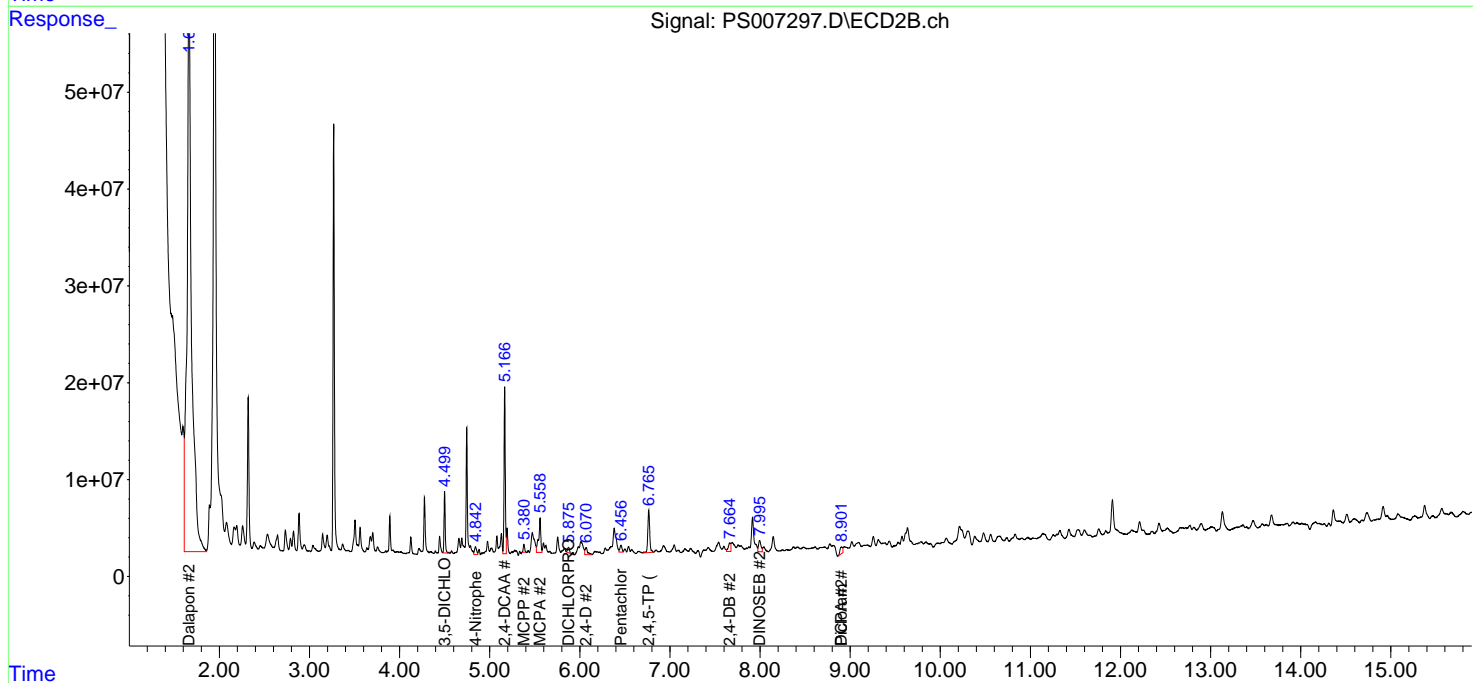
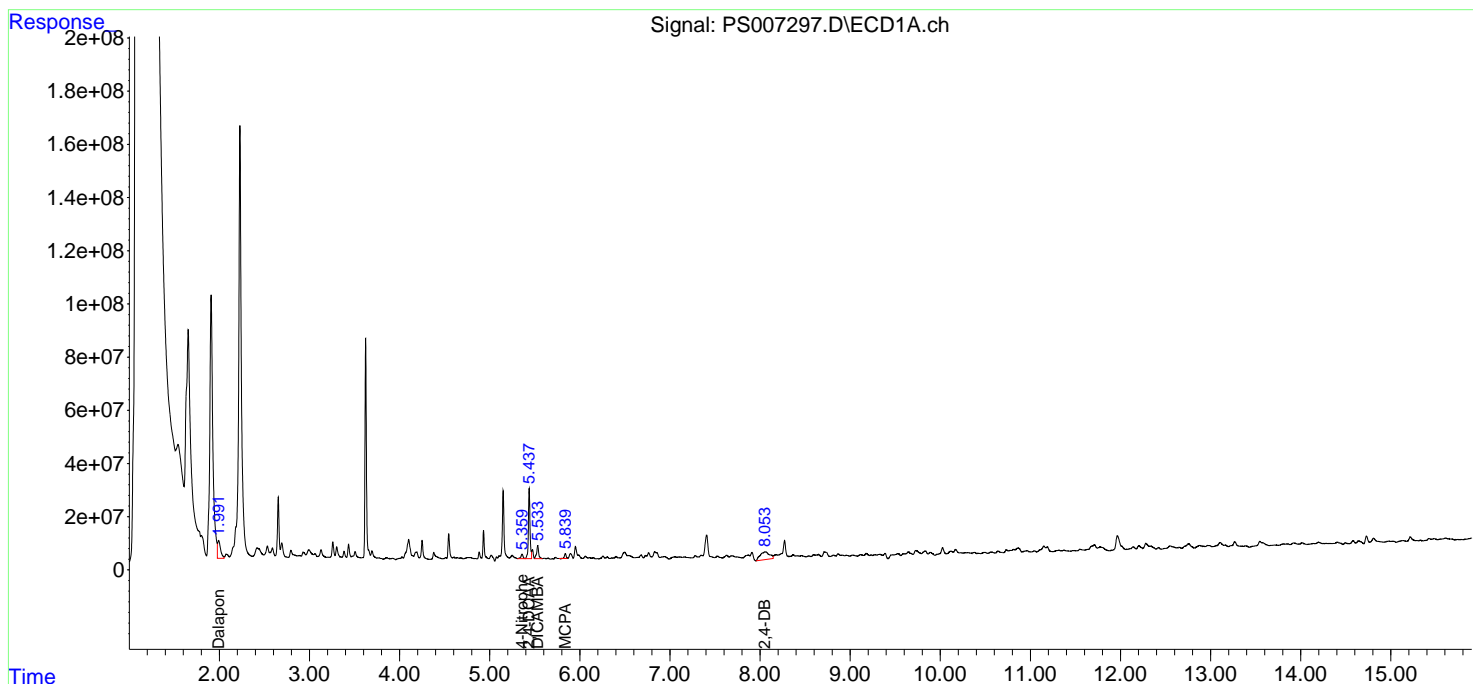
(f)=RT Delta > 1/2 Window (#)=Amounts differ by > 25% (m)=manual int.

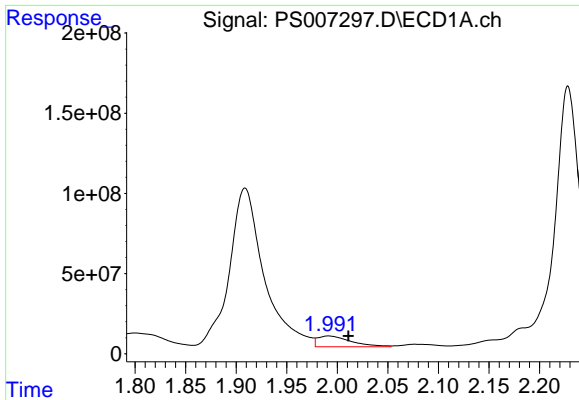
Data Path : Z:\pestpcbsrv\HPCHEM1\ECD\_S\Data\PS102419\  
 Data File : PS007297.D  
 Signal(s) : Signal #1: ECD1A.ch Signal #2: ECD2B.ch  
 Acq On : 24 Oct 2019 15:28  
 Operator : SM\AJ  
 Sample : K5494-08  
 Misc :  
 ALS Vial : 14 Sample Multiplier: 1

Instrument :  
 ECD\_S  
 ClientSampled :

Integration File signal 1: autoint1.e  
 Integration File signal 2: autoint2.e  
 Quant Time: Oct 24 17:52:25 2019  
 Quant Method : Z:\pestpcbsrv\HPCHEM1\ECD\_S\Method\PS101419.M  
 Quant Title : 8080.M  
 QLast Update : Mon Oct 14 13:54:23 2019  
 Response via : Initial Calibration  
 Integrator: ChemStation

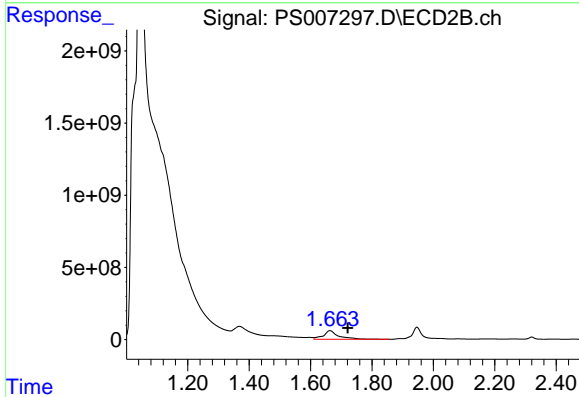
Volume Inj. : 2 µl  
 Signal #1 Phase : Rtx-CLPesticides Signal #2 Phase: Rtx-CLPesticides2  
 Signal #1 Info : 30M x 0.32mm x 0.5 Signal #2 Info : 30M x 0.32mm x 0.25µm



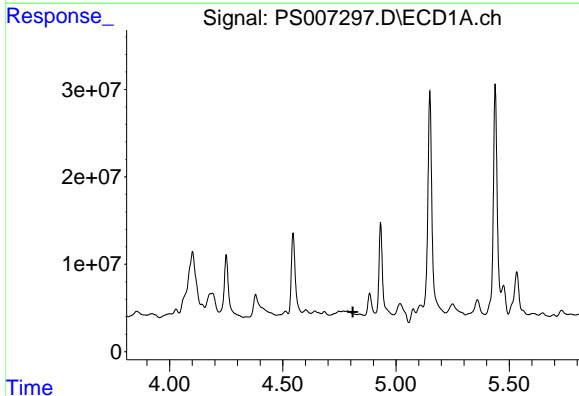


#1 Dalapon  
 R.T.: 1.992 min  
 Delta R.T.: -0.019 min  
 Response: 154717975  
 Conc: 92.46 ng/ml

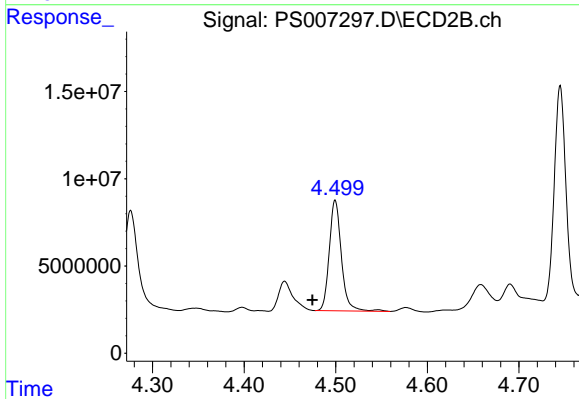
Instrument :  
 ECD\_S  
 ClientSampleId :



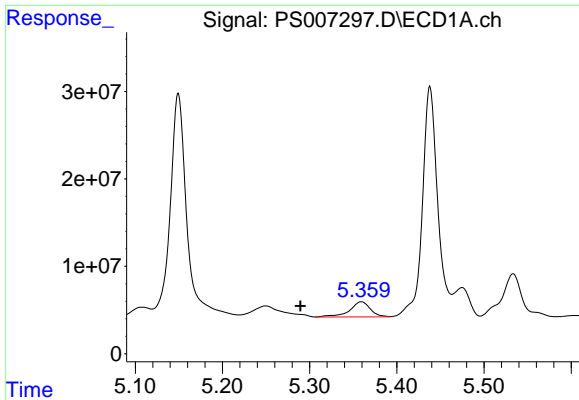
#1 Dalapon  
 R.T.: 1.663 min  
 Delta R.T.: -0.057 min  
 Response: 2059428693  
 Conc: 2263.10 ng/ml



#2 3,5-DICHLOROBENZOIC ACID  
 R.T.: 0.000 min  
 Exp R.T. : 4.810 min  
 Response: 0  
 Conc: N.D.



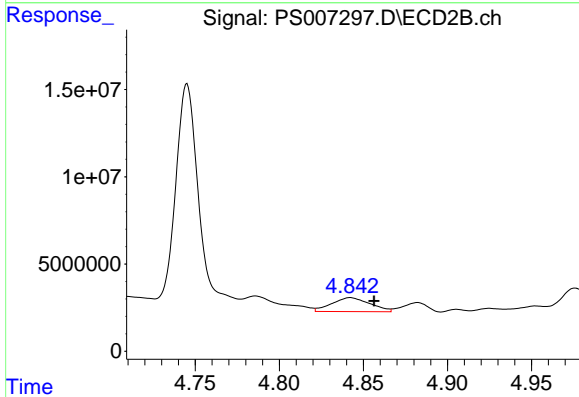
#2 3,5-DICHLOROBENZOIC ACID  
 R.T.: 4.500 min  
 Delta R.T.: 0.025 min  
 Response: 58524370  
 Conc: 68.02 ng/ml



#3 4-Nitrophenol

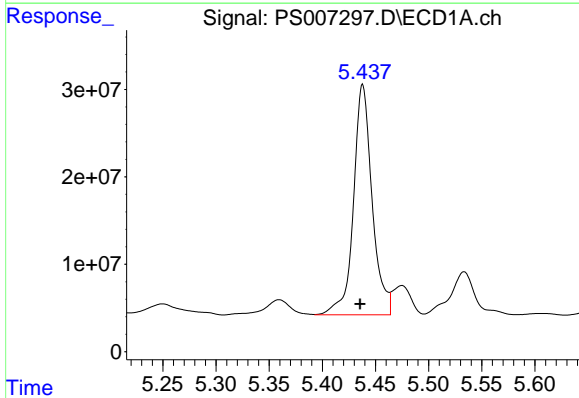
R.T.: 5.359 min  
 Delta R.T.: 0.070 min  
 Response: 28652327  
 Conc: 47.72 ng/ml

Instrument :  
 ECD\_S  
 ClientSampleId :



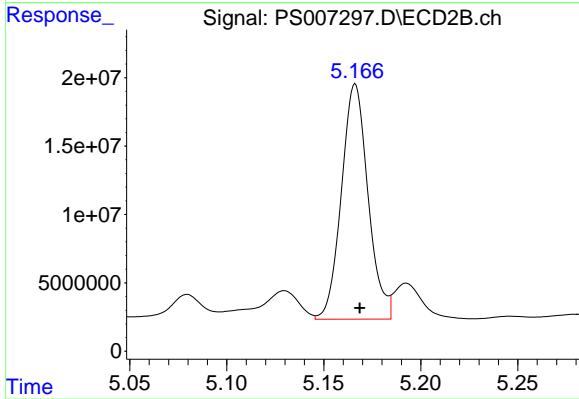
#3 4-Nitrophenol

R.T.: 4.842 min  
 Delta R.T.: -0.014 min  
 Response: 12714772  
 Conc: 32.20 ng/ml



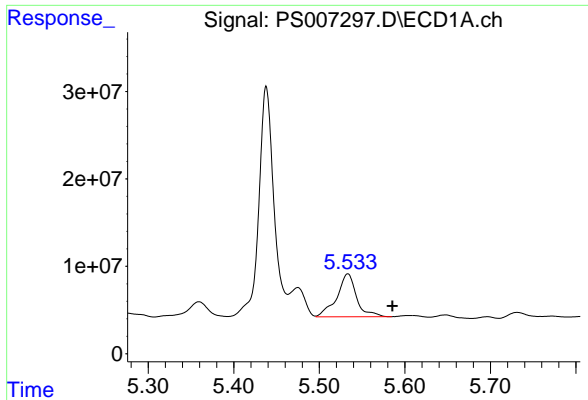
#4 2,4-DCAA

R.T.: 5.438 min  
 Delta R.T.: 0.002 min  
 Response: 321646675  
 Conc: 235.01 ng/ml



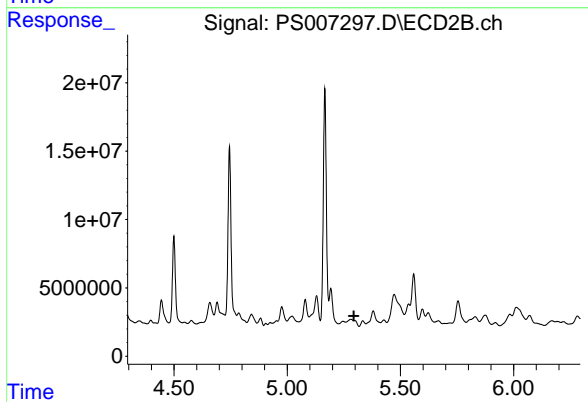
#4 2,4-DCAA

R.T.: 5.166 min  
 Delta R.T.: -0.002 min  
 Response: 164403564  
 Conc: 233.76 ng/ml

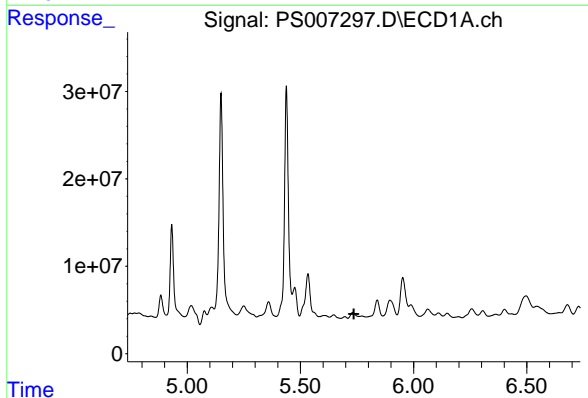


#5 DICAMBA  
 R.T.: 5.533 min  
 Delta R.T.: -0.052 min  
 Response: 78310879  
 Conc: 15.94 ng/ml

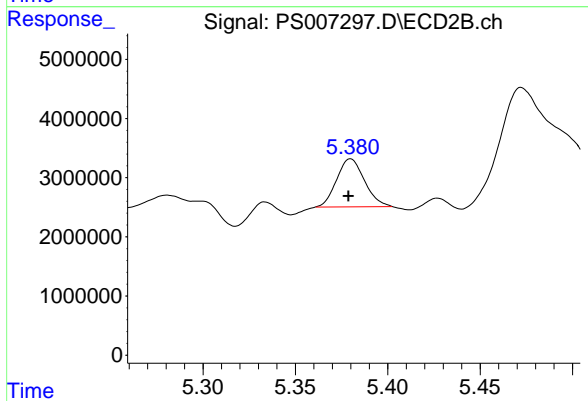
Instrument :  
 ECD\_S  
 ClientSampled :



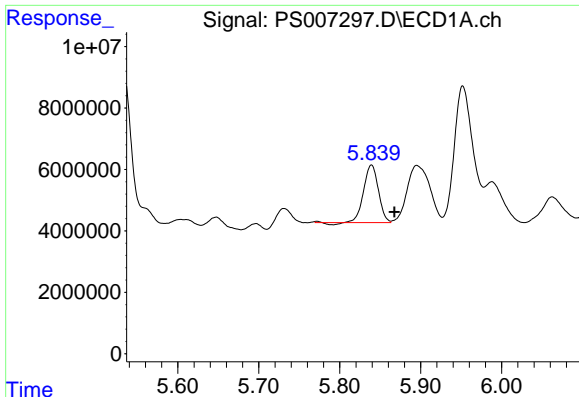
#5 DICAMBA  
 R.T.: 0.000 min  
 Exp R.T. : 5.294 min  
 Response: 0  
 Conc: N.D.



#6 MCPP  
 R.T.: 0.000 min  
 Exp R.T. : 5.736 min  
 Response: 0  
 Conc: N.D.



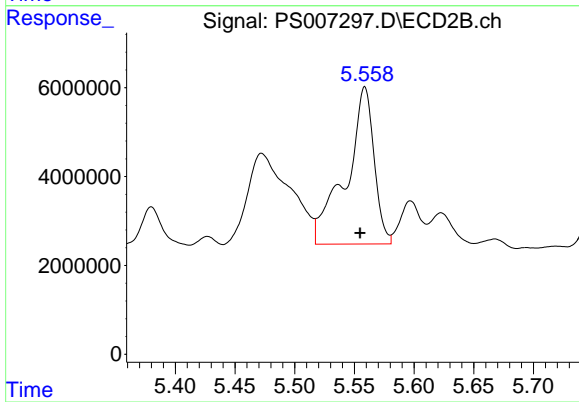
#6 MCPP  
 R.T.: 5.380 min  
 Delta R.T.: 0.001 min  
 Response: 8515599  
 Conc: 4.49 ug/ml



#7 MCPA

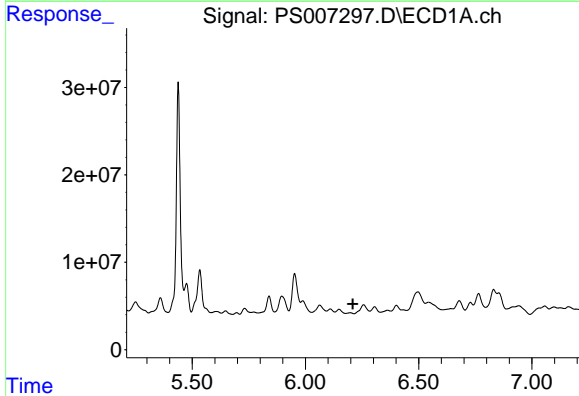
R.T.: 5.839 min  
 Delta R.T.: -0.028 min  
 Response: 23469385  
 Conc: 4.55 ug/ml

Instrument :  
 ECD\_S  
 ClientSampled :



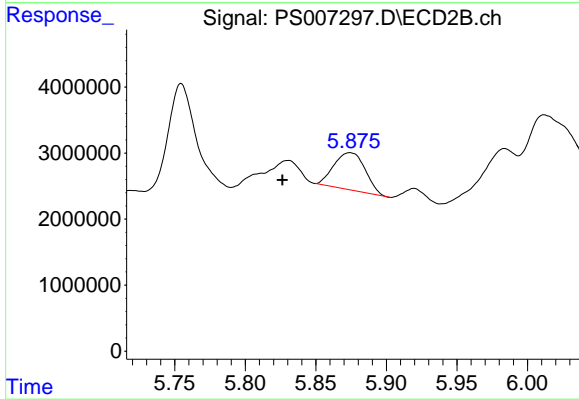
#7 MCPA

R.T.: 5.559 min  
 Delta R.T.: 0.004 min  
 Response: 57649703  
 Conc: 19.83 ug/ml



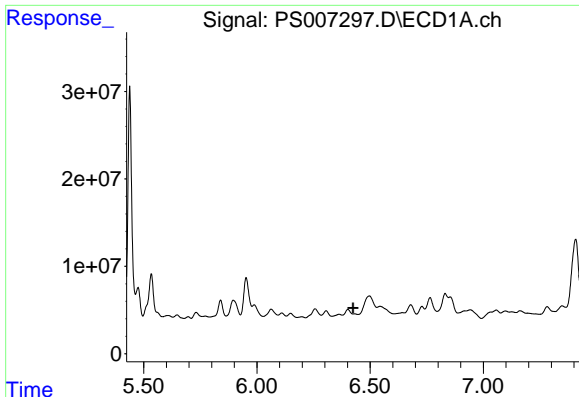
#8 DICHLORPROP

R.T.: 0.000 min  
 Exp R.T. : 6.209 min  
 Response: 0  
 Conc: N.D.



#8 DICHLORPROP

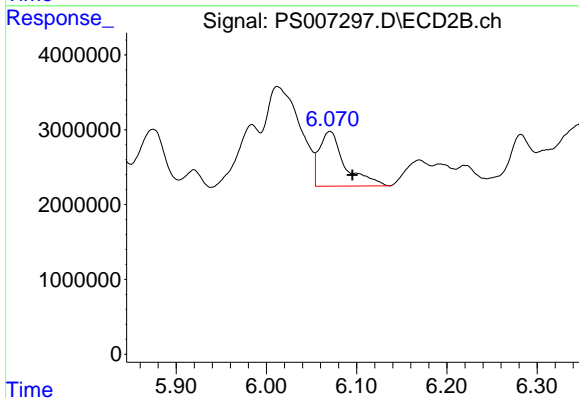
R.T.: 5.874 min  
 Delta R.T.: 0.048 min  
 Response: 8687488  
 Conc: 13.34 ng/ml



#9 2,4-D

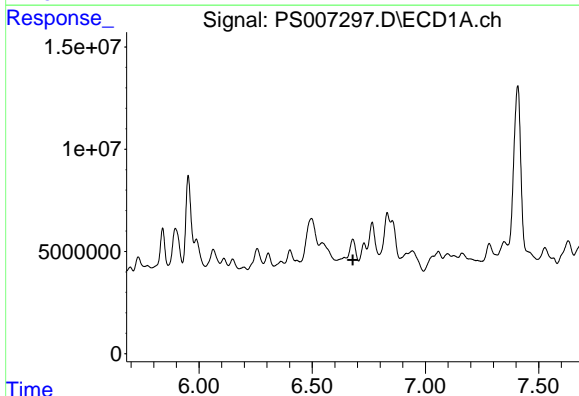
R.T.: 0.000 min  
 Exp R.T. : 6.424 min  
 Response: 0  
 Conc: N.D.

Instrument :  
 ECD\_S  
 ClientSampleId :



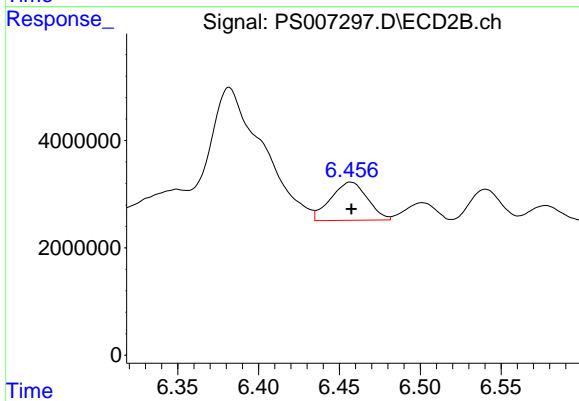
#9 2,4-D

R.T.: 6.070 min  
 Delta R.T.: -0.025 min  
 Response: 14437736  
 Conc: 18.10 ng/ml



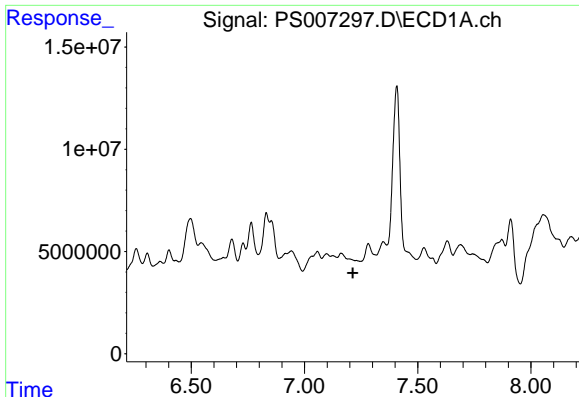
#10 Pentachlorophenol

R.T.: 0.000 min  
 Exp R.T. : 6.680 min  
 Response: 0  
 Conc: N.D.



#10 Pentachlorophenol

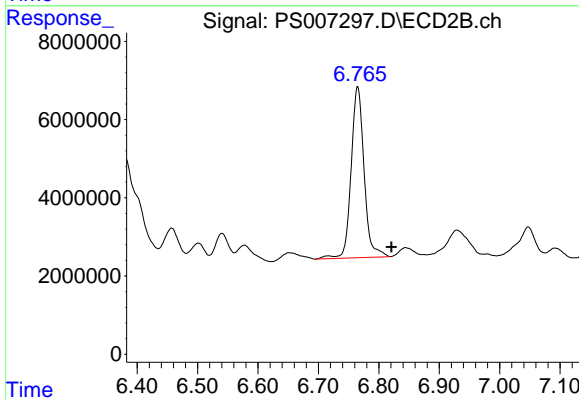
R.T.: 6.457 min  
 Delta R.T.: 0.000 min  
 Response: 11253587  
 Conc: 1.17 ng/ml



#11 2,4,5-TP (SILVEX)

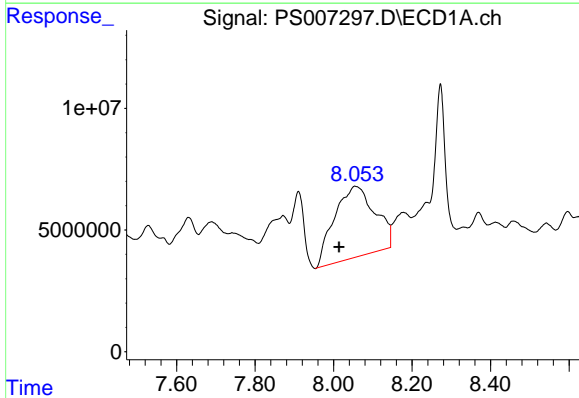
R.T.: 0.000 min  
 Exp R.T.: 7.214 min  
 Response: 0  
 Conc: N.D.

Instrument :  
 ECD\_S  
 ClientSampleId :



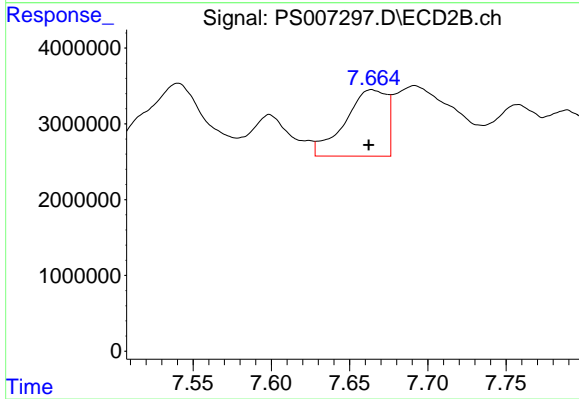
#11 2,4,5-TP (SILVEX)

R.T.: 6.765 min  
 Delta R.T.: -0.056 min  
 Response: 65263811  
 Conc: 17.16 ng/ml



#13 2,4-DB

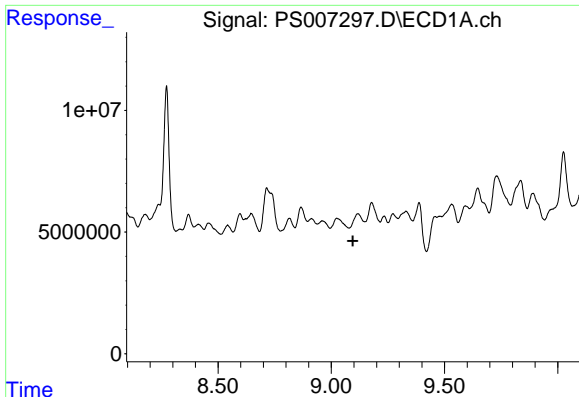
R.T.: 8.055 min  
 Delta R.T.: 0.042 min  
 Response: 209752408  
 Conc: 219.99 ng/ml



#13 2,4-DB

R.T.: 7.664 min  
 Delta R.T.: 0.002 min  
 Response: 16342890  
 Conc: 34.87 ng/ml

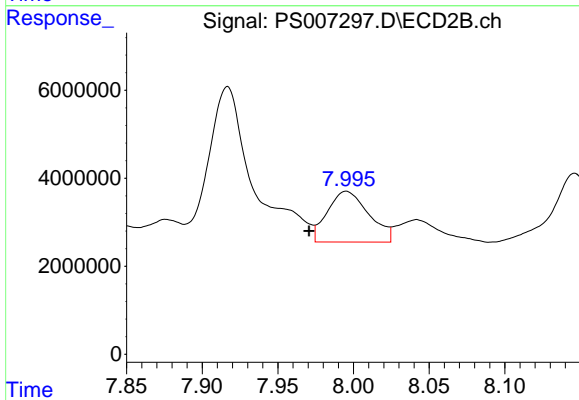




#14 DINOSEB

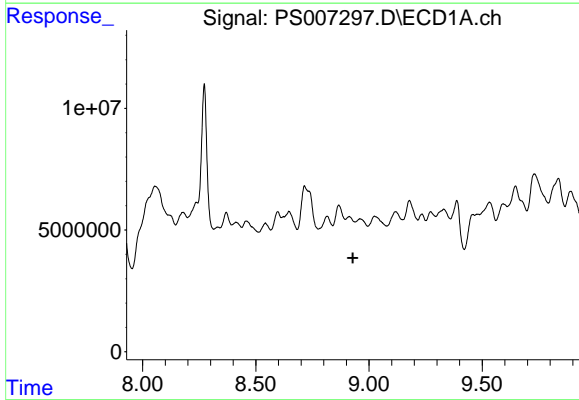
R.T.: 0.000 min  
 Exp R.T. : 9.095 min  
 Response: 0  
 Conc: N.D.

Instrument :  
 ECD\_S  
 ClientSampled :



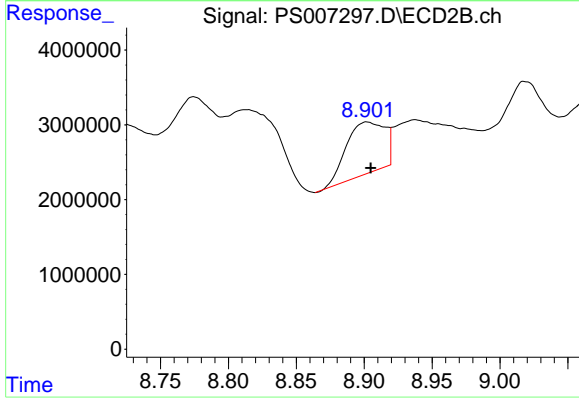
#14 DINOSEB

R.T.: 7.995 min  
 Delta R.T.: 0.025 min  
 Response: 21969025  
 Conc: 7.83 ng/ml



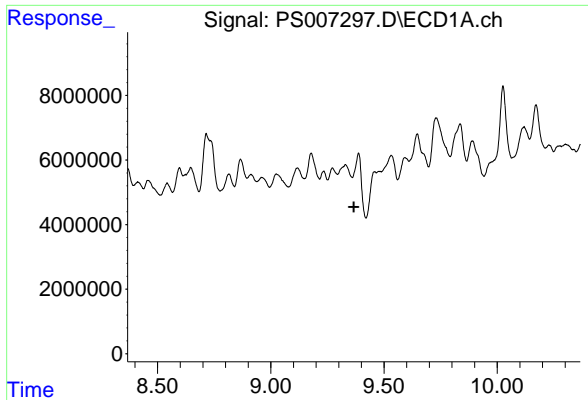
#15 Picloram

R.T.: 0.000 min  
 Exp R.T. : 8.929 min  
 Response: 0  
 Conc: N.D.



#15 Picloram

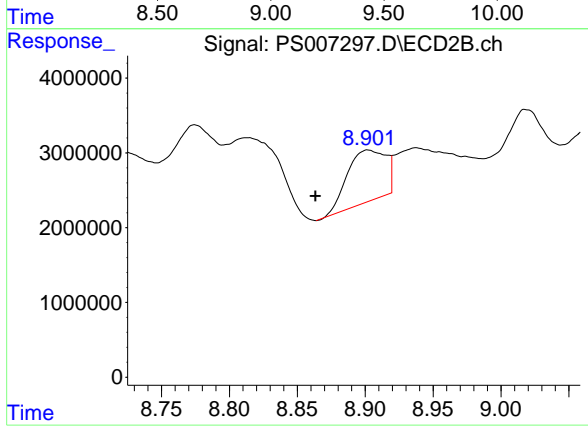
R.T.: 8.902 min  
 Delta R.T.: -0.002 min  
 Response: 13638152  
 Conc: 2.22 ng/ml



#16 DCPA

R.T.: 0.000 min  
 Exp R.T.: 9.367 min  
 Response: 0  
 Conc: N.D.

Instrument :  
 ECD\_S  
 ClientSampleId :



#16 DCPA

R.T.: 8.902 min  
 Delta R.T.: 0.039 min  
 Response: 13638152  
 Conc: 2.72 ng/ml