

Data Path : Z:\pestpcbsrv\HPCHEM1\ECD_S\Data\PS102419\
 Data File : PS007298.D
 Signal(s) : Signal #1: ECD1A.ch Signal #2: ECD2B.ch
 Acq On : 24 Oct 2019 15:50
 Operator : SM\AJ
 Sample : K5497-09
 Misc :
 ALS Vial : 15 Sample Multiplier: 1

Instrument :
 ECD_S
 ClientSampleId :

Integration File signal 1: autoint1.e
 Integration File signal 2: autoint2.e
 Quant Time: Oct 24 17:52:39 2019
 Quant Method : Z:\pestpcbsrv\HPCHEM1\ECD_S\Method\PS101419.M
 Quant Title : 8080.M
 QLast Update : Mon Oct 14 13:54:23 2019
 Response via : Initial Calibration
 Integrator: ChemStation

Volume Inj. : 2 µl
 Signal #1 Phase : Rtx-CLPesticides Signal #2 Phase: Rtx-CLPesticides2
 Signal #1 Info : 30M x 0.32mm x0.5 Signal #2 Info : 30M x 0.32mm x 0.25µm

| Compound | RT#1 | RT#2 | Resp#1 | Resp#2 | ng/ml | ng/ml |
|-----------------------------|-------|-------|----------|----------|---------|------------|
| ----- | | | | | | |
| System Monitoring Compounds | | | | | | |
| 4) S 2,4-DCAA | 5.437 | 5.166 | 387.2E6 | 204.8E6 | 282.934 | 291.148 |
| Target Compounds | | | | | | |
| 1) T Dalapon | 1.993 | 1.662 | 104.4E6 | 1118.0E6 | 62.408 | 1228.521 # |
| 2) T 3,5-DICHL... | 0.000 | 4.499 | 0 | 62699221 | N.D. | 72.870 |
| 3) T 4-Nitroph... | 0.000 | 4.842 | 0 | 17494064 | N.D. | 44.301 |
| 5) T DICAMBA | 5.531 | 0.000 | 51466457 | 0 | 10.475 | N.D. # |
| 6) T MCPP | 0.000 | 5.380 | 0 | 4017639 | N.D. | 2.118 |
| 7) T MCPA | 0.000 | 5.558 | 0 | 18156802 | N.D. | 6.246 |
| 9) T 2,4-D | 6.491 | 6.071 | 74787837 | 12628702 | 60.688 | 15.829 # |
| 10) T Pentachlo... | 0.000 | 6.459 | 0 | 6893191 | N.D. | <MDL |
| 11) T 2,4,5-TP ... | 0.000 | 6.764 | 0 | 66494311 | N.D. | 17.482 |
| 13) T 2,4-DB | 8.072 | 7.697 | 72798875 | 26239071 | 76.352 | 55.983 # |
| 14) T DINOSEB | 0.000 | 7.957 | 0 | 12586063 | N.D. | 4.483 |
| 15) T Picloram | 0.000 | 8.938 | 0 | 33976584 | N.D. | 5.534 |
| ----- | | | | | | |

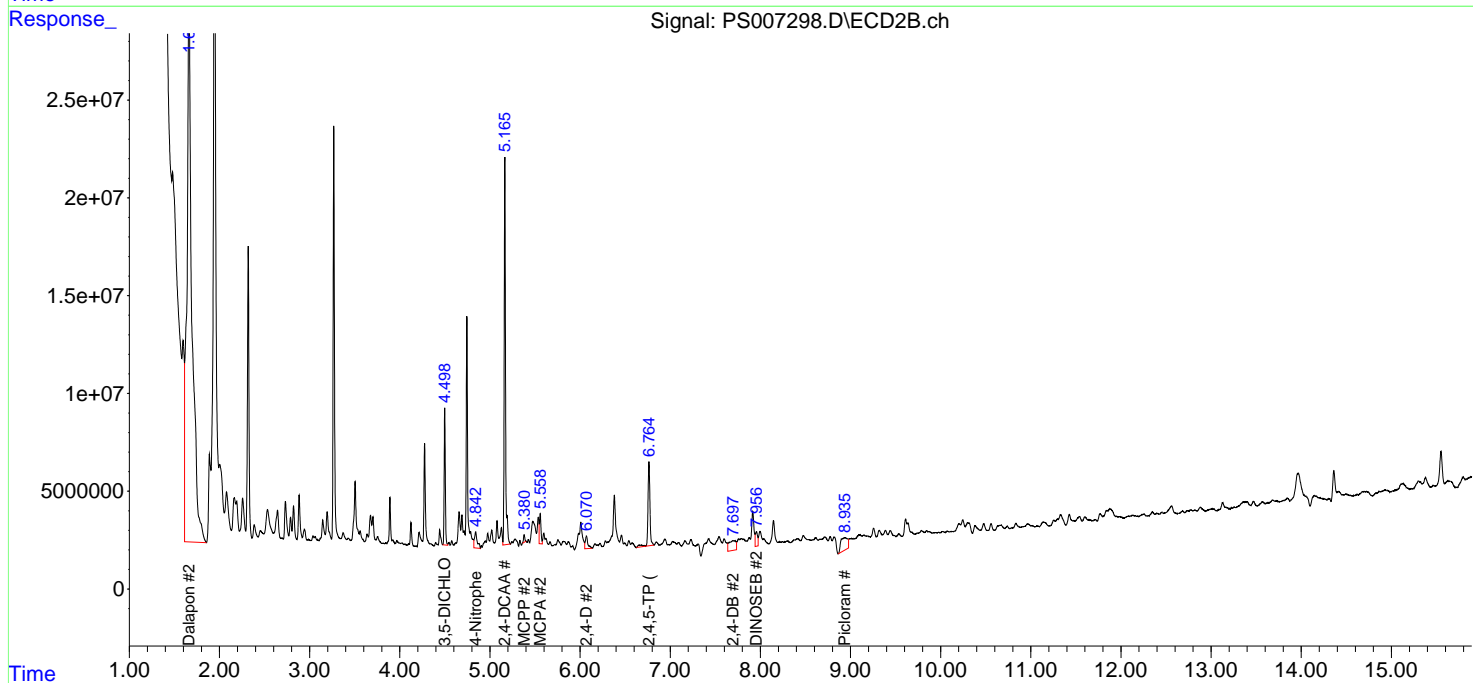
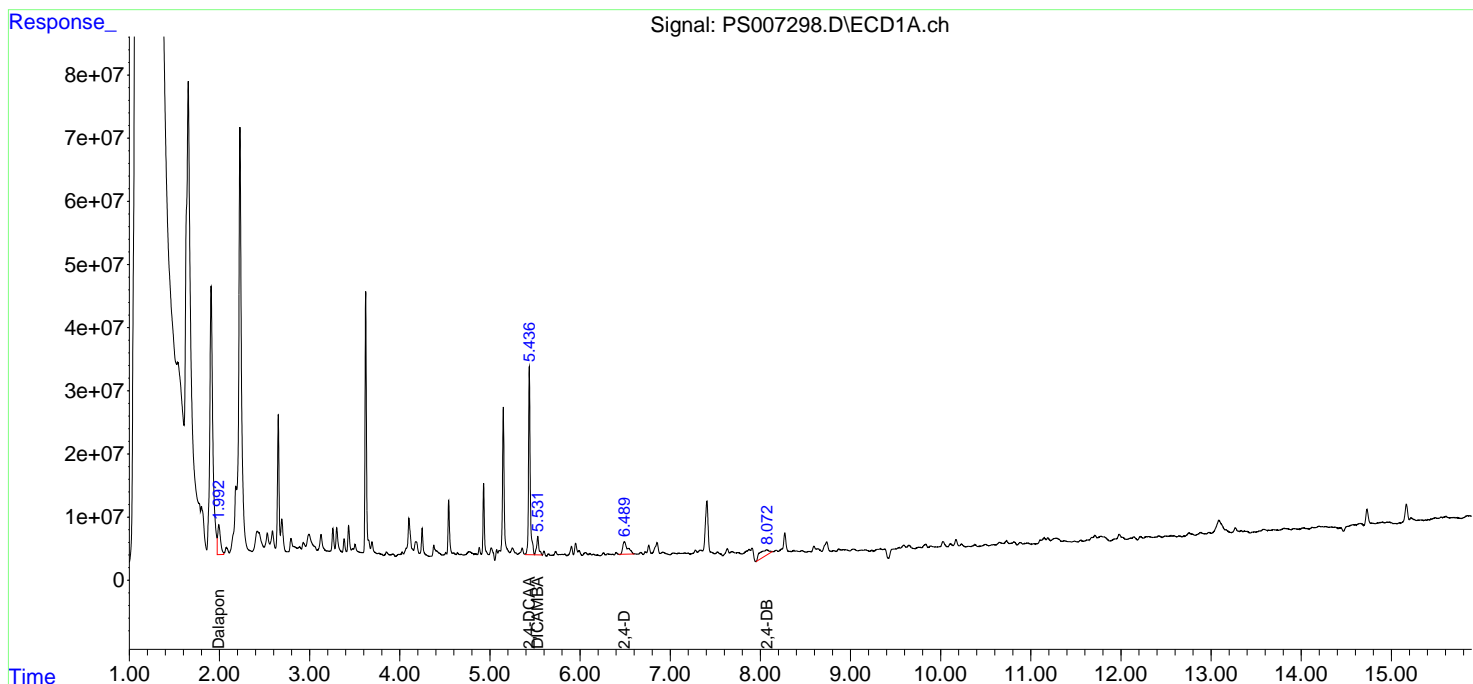
(f)=RT Delta > 1/2 Window (#)=Amounts differ by > 25% (m)=manual int.

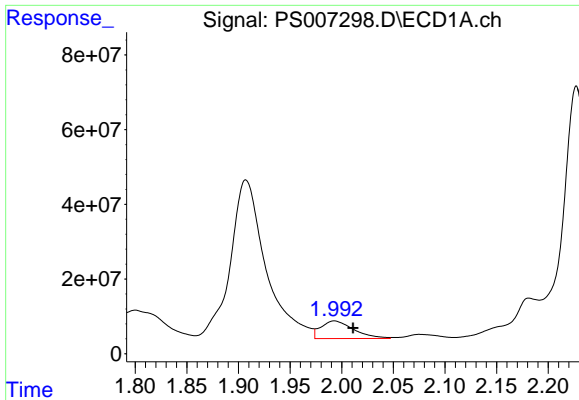
Data Path : Z:\pestpcbsrv\HPCHEM1\ECD_S\Data\PS102419\
 Data File : PS007298.D
 Signal(s) : Signal #1: ECD1A.ch Signal #2: ECD2B.ch
 Acq On : 24 Oct 2019 15:50
 Operator : SM\AJ
 Sample : K5497-09
 Misc :
 ALS Vial : 15 Sample Multiplier: 1

Instrument :
 ECD_S
 ClientSampled :

Integration File signal 1: autoint1.e
 Integration File signal 2: autoint2.e
 Quant Time: Oct 24 17:52:39 2019
 Quant Method : Z:\pestpcbsrv\HPCHEM1\ECD_S\Method\PS101419.M
 Quant Title : 8080.M
 QLast Update : Mon Oct 14 13:54:23 2019
 Response via : Initial Calibration
 Integrator: ChemStation

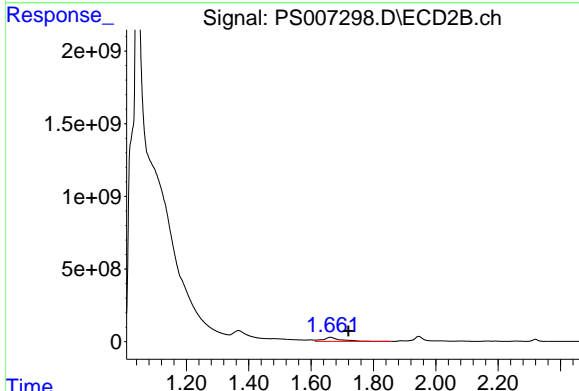
Volume Inj. : 2 µl
 Signal #1 Phase : Rtx-CLPesticides Signal #2 Phase: Rtx-CLPesticides2
 Signal #1 Info : 30M x 0.32mm x 0.5 Signal #2 Info : 30M x 0.32mm x 0.25µm



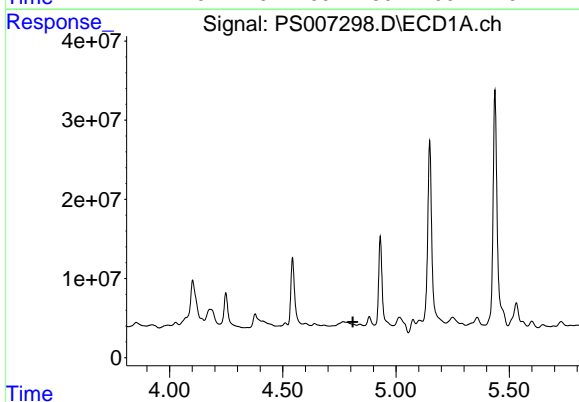


#1 Dalapon
 R.T.: 1.993 min
 Delta R.T.: -0.018 min
 Response: 104425566
 Conc: 62.41 ng/ml

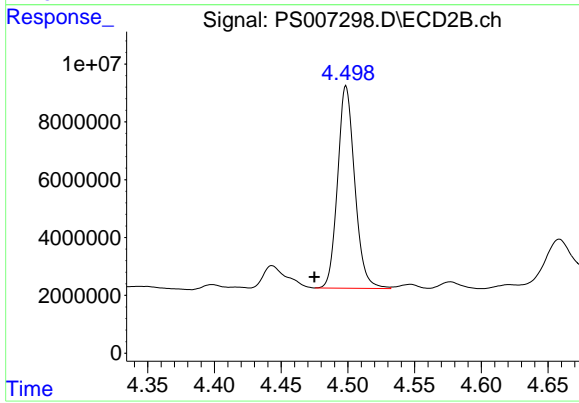
Instrument :
 ECD_S
 ClientSampleId :



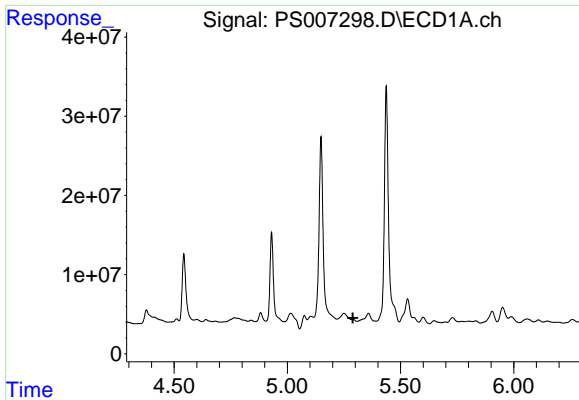
#1 Dalapon
 R.T.: 1.662 min
 Delta R.T.: -0.059 min
 Response: 1117958719
 Conc: 1228.52 ng/ml



#2 3,5-DICHLOROBENZOIC ACID
 R.T.: 0.000 min
 Exp R.T. : 4.810 min
 Response: 0
 Conc: N.D.



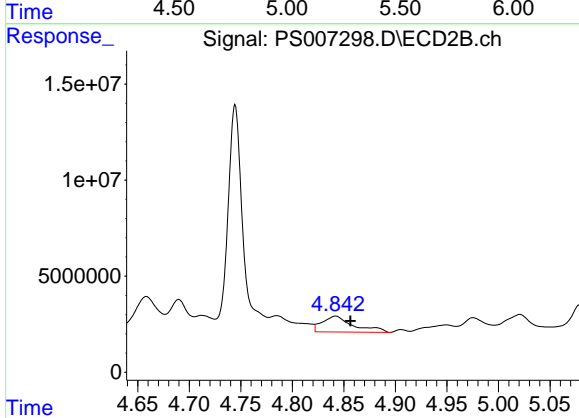
#2 3,5-DICHLOROBENZOIC ACID
 R.T.: 4.499 min
 Delta R.T.: 0.024 min
 Response: 62699221
 Conc: 72.87 ng/ml



#3 4-Nitrophenol

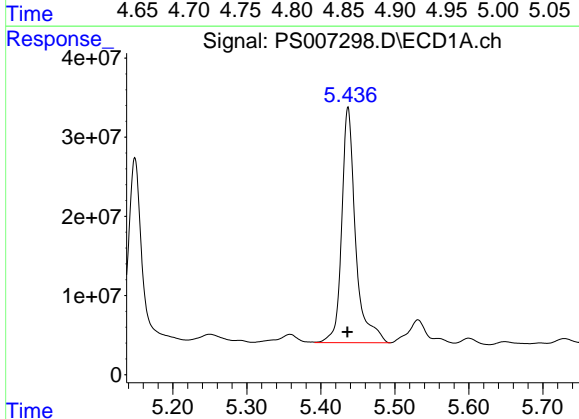
R.T.: 0.000 min
 Exp R.T.: 5.290 min
 Response: 0
 Conc: N.D.

Instrument :
 ECD_S
 ClientSampled :



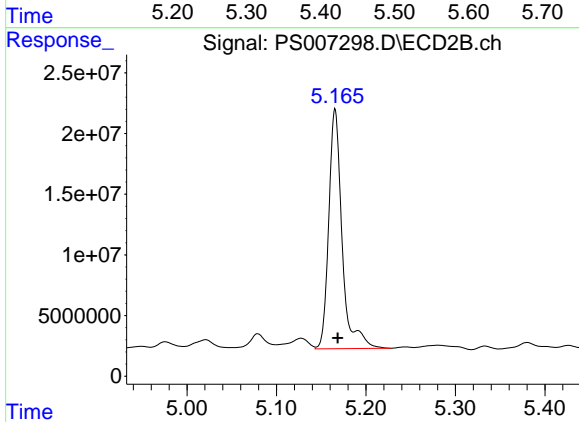
#3 4-Nitrophenol

R.T.: 4.842 min
 Delta R.T.: -0.015 min
 Response: 17494064
 Conc: 44.30 ng/ml



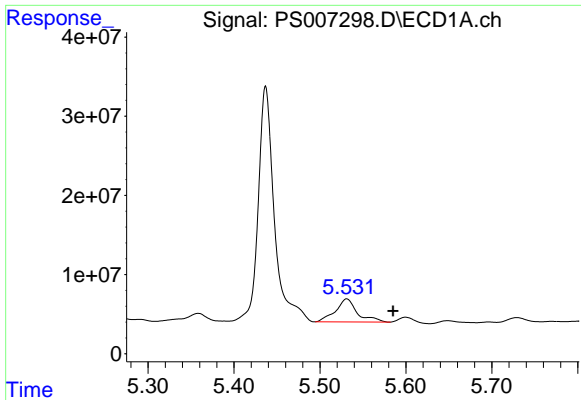
#4 2,4-DCAA

R.T.: 5.437 min
 Delta R.T.: 0.001 min
 Response: 387243250
 Conc: 282.93 ng/ml



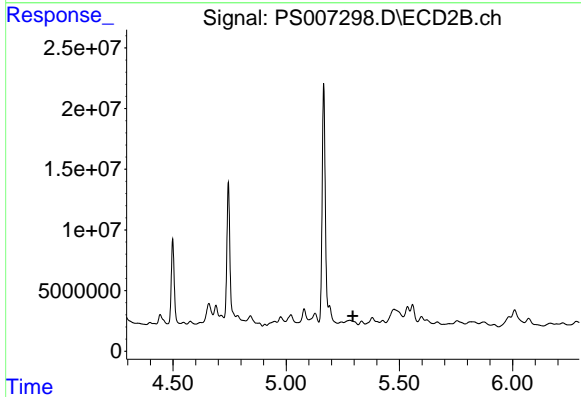
#4 2,4-DCAA

R.T.: 5.166 min
 Delta R.T.: -0.003 min
 Response: 204766478
 Conc: 291.15 ng/ml

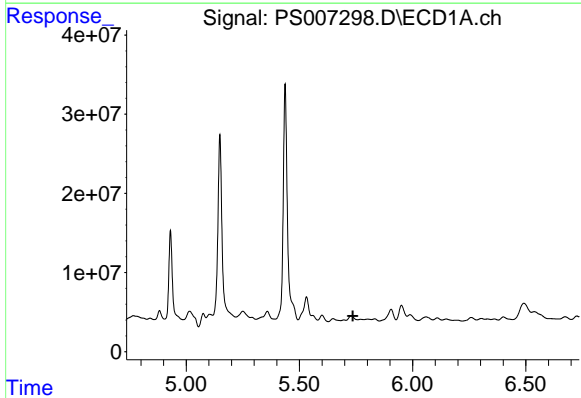


#5 DICAMBA
 R.T.: 5.531 min
 Delta R.T.: -0.054 min
 Response: 51466457
 Conc: 10.47 ng/ml

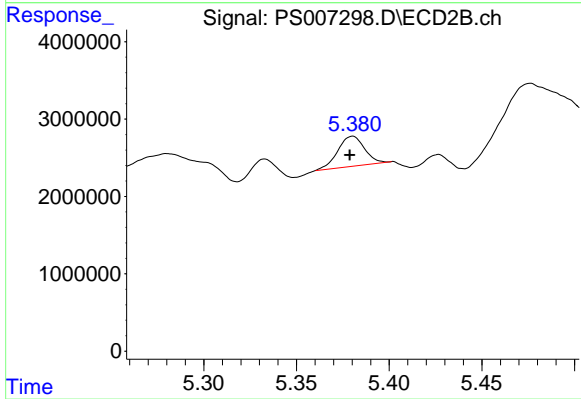
Instrument :
 ECD_S
 ClientSampled :



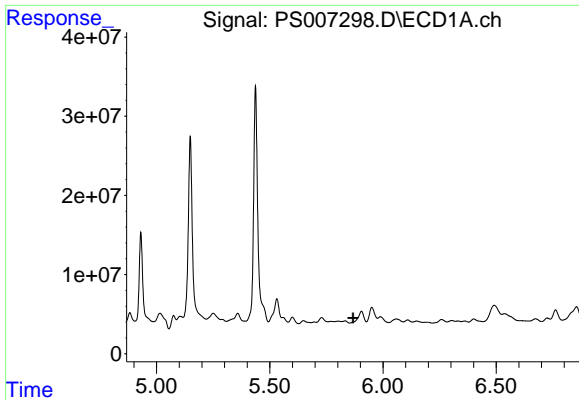
#5 DICAMBA
 R.T.: 0.000 min
 Exp R.T. : 5.294 min
 Response: 0
 Conc: N.D.



#6 MCPP
 R.T.: 0.000 min
 Exp R.T. : 5.736 min
 Response: 0
 Conc: N.D.

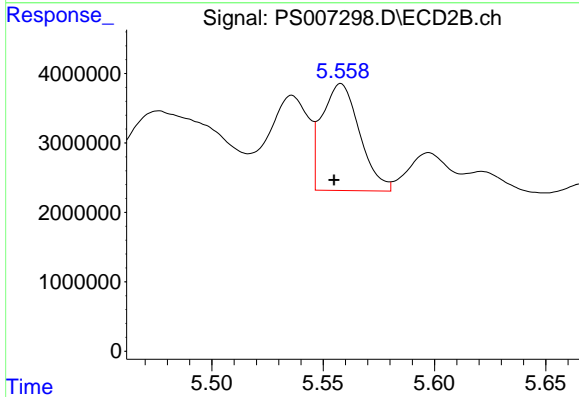


#6 MCPP
 R.T.: 5.380 min
 Delta R.T.: 0.001 min
 Response: 4017639
 Conc: 2.12 ug/ml

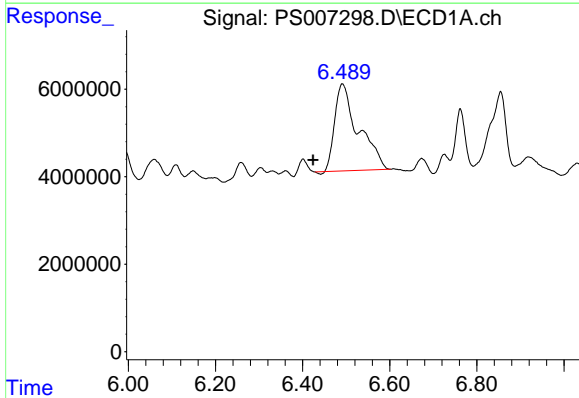


#7 MCPA
 R.T.: 0.000 min
 Exp R.T.: 5.867 min
 Response: 0
 Conc: N.D.

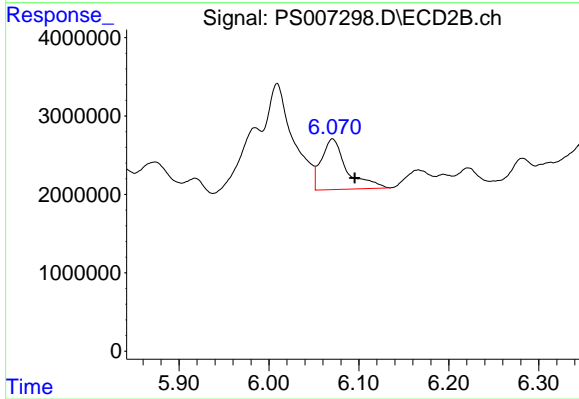
Instrument :
 ECD_S
 ClientSampled :



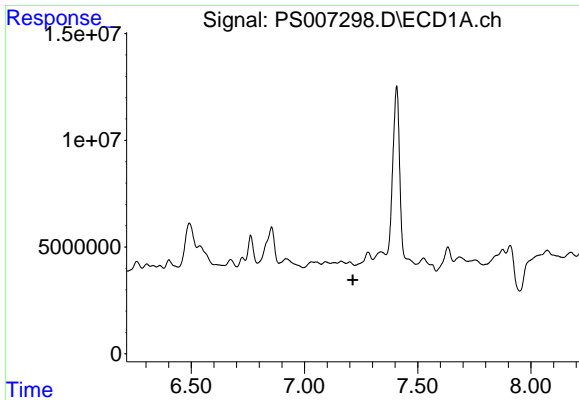
#7 MCPA
 R.T.: 5.558 min
 Delta R.T.: 0.003 min
 Response: 18156802
 Conc: 6.25 ug/ml



#9 2,4-D
 R.T.: 6.491 min
 Delta R.T.: 0.067 min
 Response: 74787837
 Conc: 60.69 ng/ml

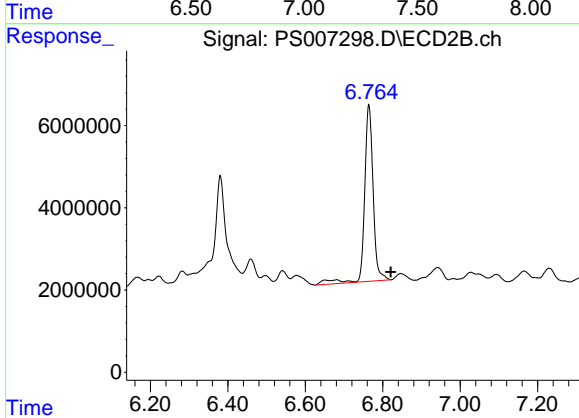


#9 2,4-D
 R.T.: 6.071 min
 Delta R.T.: -0.025 min
 Response: 12628702
 Conc: 15.83 ng/ml

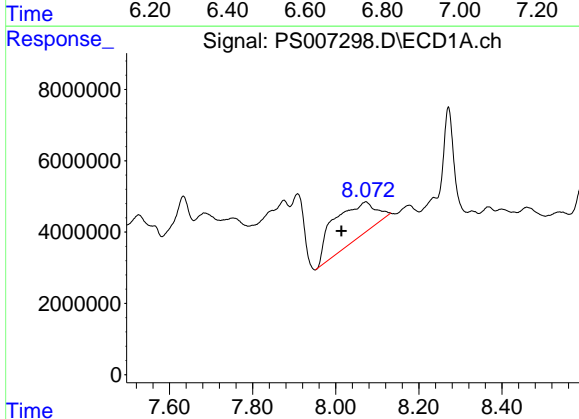


#11 2,4,5-TP (SILVEX)
 R.T.: 0.000 min
 Exp R.T.: 7.214 min
 Response: 0
 Conc: N.D.

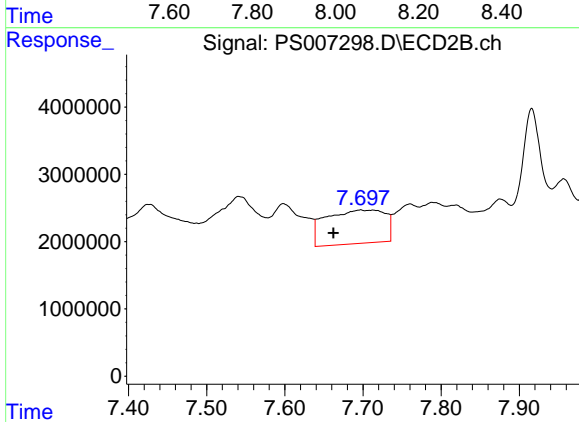
Instrument :
 ECD_S
 ClientSampled :



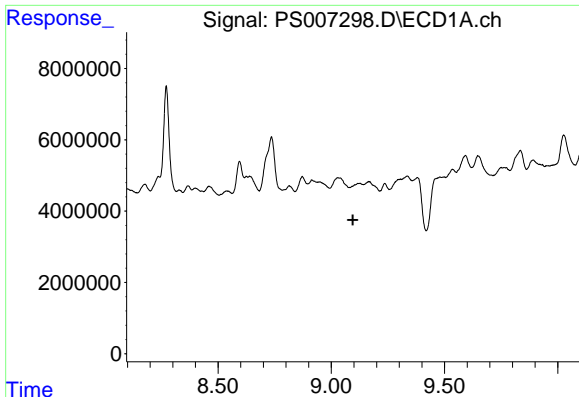
#11 2,4,5-TP (SILVEX)
 R.T.: 6.764 min
 Delta R.T.: -0.056 min
 Response: 66494311
 Conc: 17.48 ng/ml



#13 2,4-DB
 R.T.: 8.072 min
 Delta R.T.: 0.059 min
 Response: 72798875
 Conc: 76.35 ng/ml



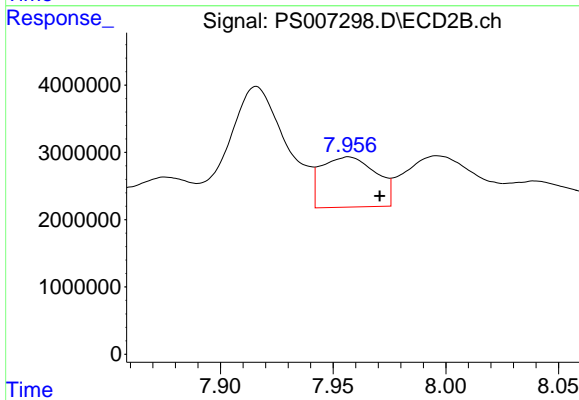
#13 2,4-DB
 R.T.: 7.697 min
 Delta R.T.: 0.034 min
 Response: 26239071
 Conc: 55.98 ng/ml



#14 DINOSEB

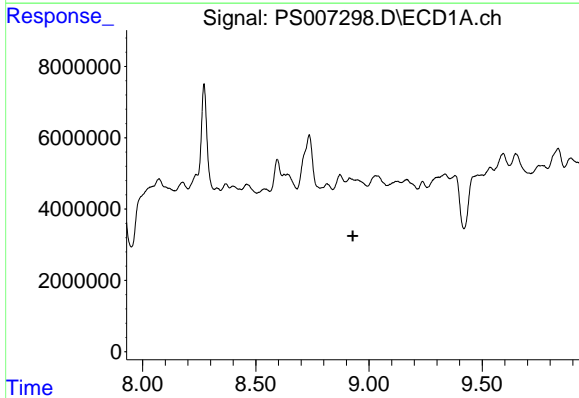
R.T.: 0.000 min
 Exp R.T. : 9.095 min
 Response: 0
 Conc: N.D.

Instrument :
 ECD_S
 ClientSampled :



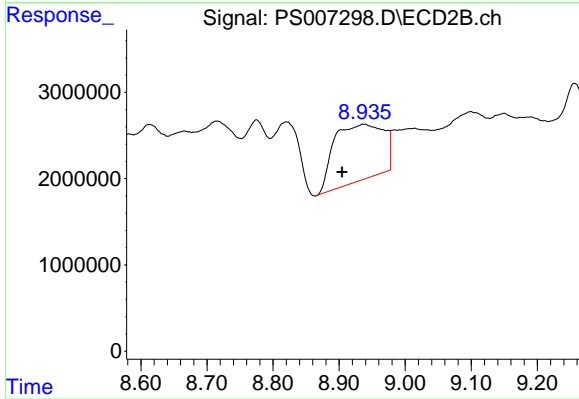
#14 DINOSEB

R.T.: 7.957 min
 Delta R.T.: -0.014 min
 Response: 12586063
 Conc: 4.48 ng/ml



#15 Picloram

R.T.: 0.000 min
 Exp R.T. : 8.929 min
 Response: 0
 Conc: N.D.



#15 Picloram

R.T.: 8.938 min
 Delta R.T.: 0.033 min
 Response: 33976584
 Conc: 5.53 ng/ml