

Data Path : Z:\pestpcbsrv\HPCHEM1\ECD\_S\Data\PS102419\  
 Data File : PS007321.D  
 Signal(s) : Signal #1: ECD1A.ch Signal #2: ECD2B.ch  
 Acq On : 25 Oct 2019 00:44  
 Operator : SM\AJ  
 Sample : K5498-15  
 Misc :  
 ALS Vial : 34 Sample Multiplier: 1

Instrument :  
 ECD\_S  
 ClientSampleId :

Integration File signal 1: autoint1.e  
 Integration File signal 2: autoint2.e  
 Quant Time: Oct 25 01:57:08 2019  
 Quant Method : Z:\pestpcbsrv\HPCHEM1\ECD\_S\Method\PS101419.M  
 Quant Title : 8080.M  
 QLast Update : Mon Oct 14 13:54:23 2019  
 Response via : Initial Calibration  
 Integrator: ChemStation

Volume Inj. : 2 µl  
 Signal #1 Phase : Rtx-CLPesticides Signal #2 Phase: Rtx-CLPesticides2  
 Signal #1 Info : 30M x 0.32mm x0.5 Signal #2 Info : 30M x 0.32mm x 0.25µm

	Compound	RT#1	RT#2	Resp#1	Resp#2	ng/ml	ng/ml
-----							
System Monitoring Compounds							
4) S	2,4-DCAA	5.431	5.163	218.7E6	109.7E6	159.814	155.962
Target Compounds							
1) T	Dalapon	1.993	1.661	82116967	775.0E6	49.075	851.624 #
2) T	3,5-DICHL...	4.803	4.481	61264993	270.9E6	36.459	314.806 #
3) T	4-Nitroph...	5.295	4.867	154.1E6	23743233	256.633	60.125 #
5) T	DICAMBA	5.597	5.295	86736537	23228294	17.653	8.927 #
6) T	MCP P	0.000	5.383	0	19111701	N.D.	10.076
7) T	MCPA	5.821	5.557	40564592	22448641	7.865	7.722
8) T	DICHLORPROP	0.000	5.818	0	18581900	N.D.	28.534
9) T	2,4-D	6.426	6.094	66432140	36135288	53.907	45.294
10) T	Pentachlo...	6.668	6.466	95961116	28449837	5.375	2.958 #
11) T	2,4,5-TP ...	7.172	6.809	87708996	21420720	12.584	5.632 #
12) T	2,4,5-T	7.532	7.158	60097829	13660578	7.861	3.899 #
13) T	2,4-DB	8.040	7.652	160.8E6	40920909	168.690	87.308 #
14) T	DINOSEB	9.045	7.982	45990903	96397596	7.903	34.337 #
15) T	Picloram	8.951	8.945	60595270	28573243	5.490	4.654
16) T	DCPA	9.351	8.801	84977345	54445689	9.490	10.857
-----							

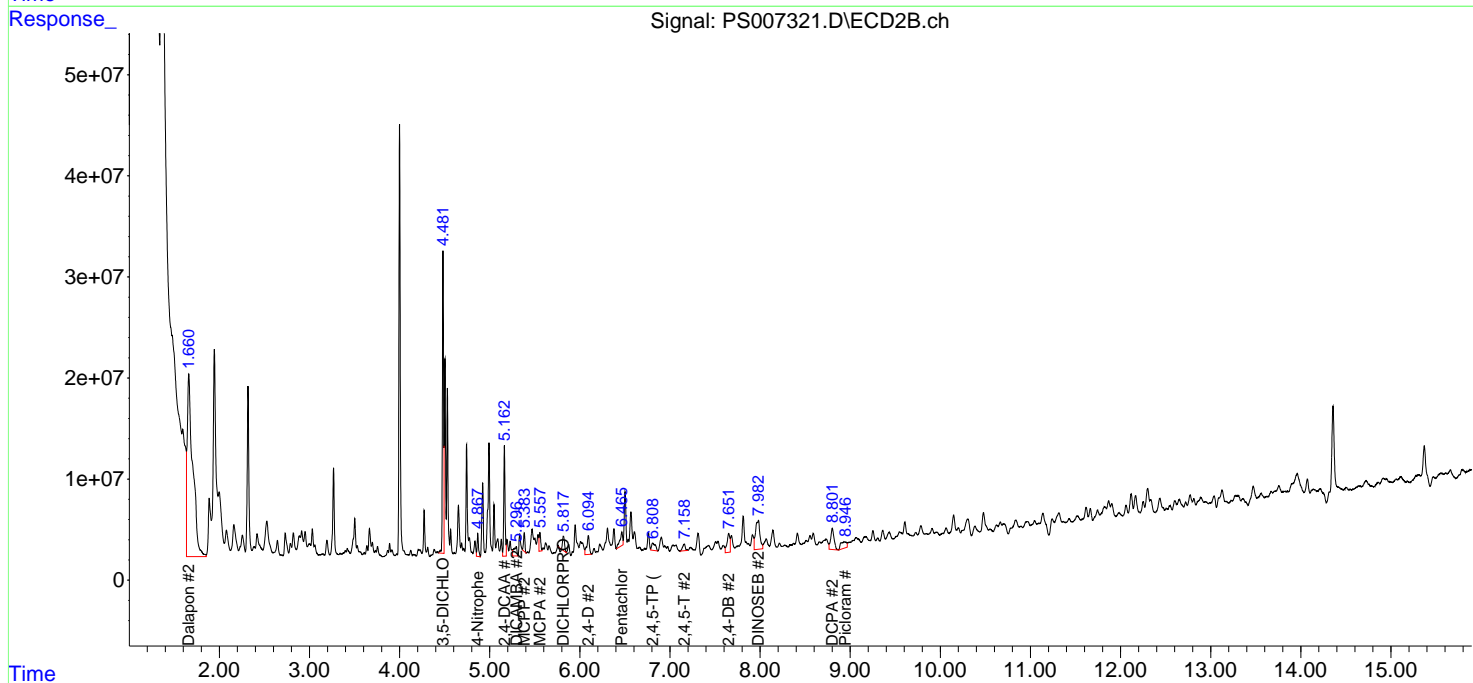
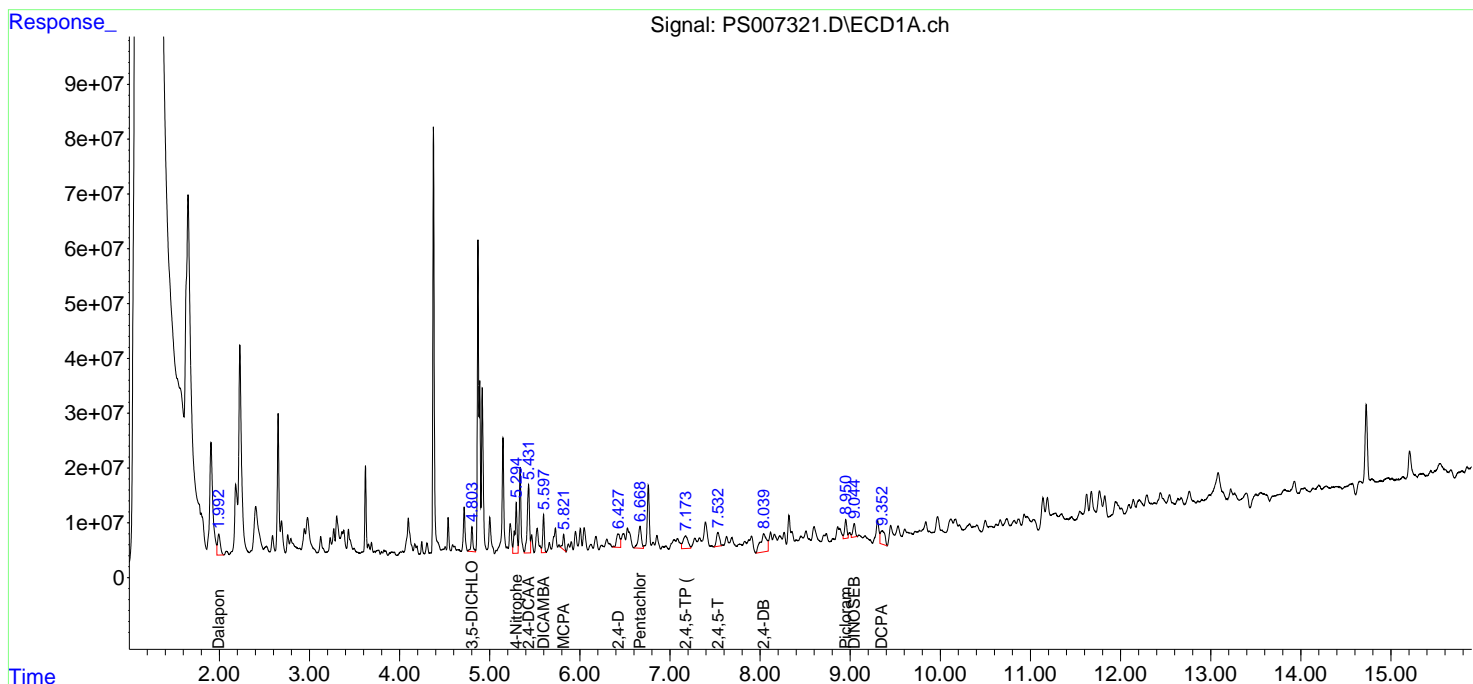
(f)=RT Delta > 1/2 Window (#)=Amounts differ by > 25% (m)=manual int.

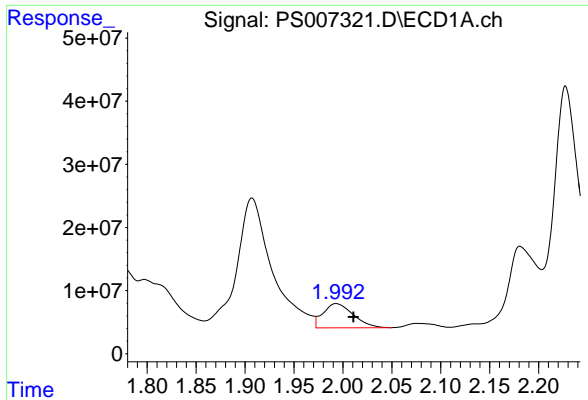
Data Path : Z:\pestpcbsrv\HPCHEM1\ECD\_S\Data\PS102419\  
 Data File : PS007321.D  
 Signal(s) : Signal #1: ECD1A.ch Signal #2: ECD2B.ch  
 Acq On : 25 Oct 2019 00:44  
 Operator : SM\AJ  
 Sample : K5498-15  
 Misc :  
 ALS Vial : 34 Sample Multiplier: 1

Instrument :  
 ECD\_S  
 ClientSampled :

Integration File signal 1: autoint1.e  
 Integration File signal 2: autoint2.e  
 Quant Time: Oct 25 01:57:08 2019  
 Quant Method : Z:\pestpcbsrv\HPCHEM1\ECD\_S\Method\PS101419.M  
 Quant Title : 8080.M  
 QLast Update : Mon Oct 14 13:54:23 2019  
 Response via : Initial Calibration  
 Integrator: ChemStation

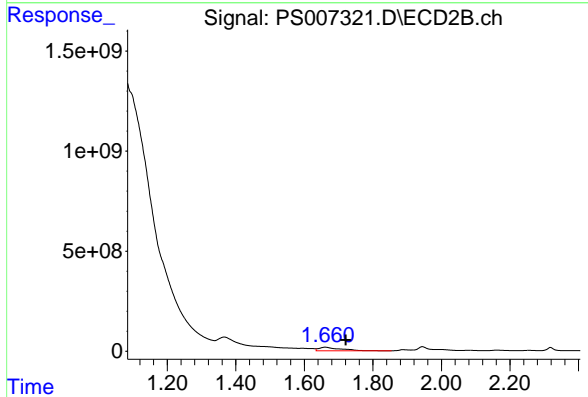
Volume Inj. : 2 µl  
 Signal #1 Phase : Rtx-CLPesticides Signal #2 Phase: Rtx-CLPesticides2  
 Signal #1 Info : 30M x 0.32mm x 0.5 Signal #2 Info : 30M x 0.32mm x 0.25µm



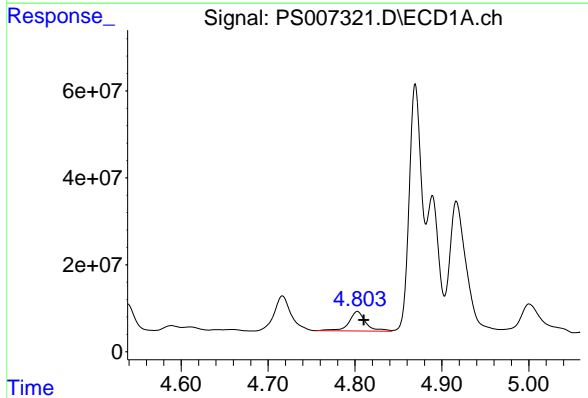


#1 Dalapon  
 R.T.: 1.993 min  
 Delta R.T.: -0.018 min  
 Response: 82116967  
 Conc: 49.08 ng/ml

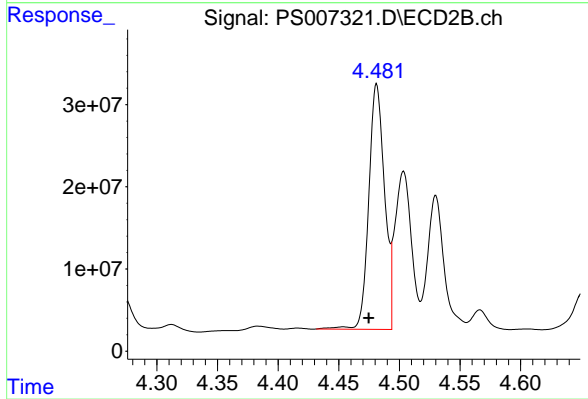
Instrument :  
 ECD\_S  
 ClientSampleId :



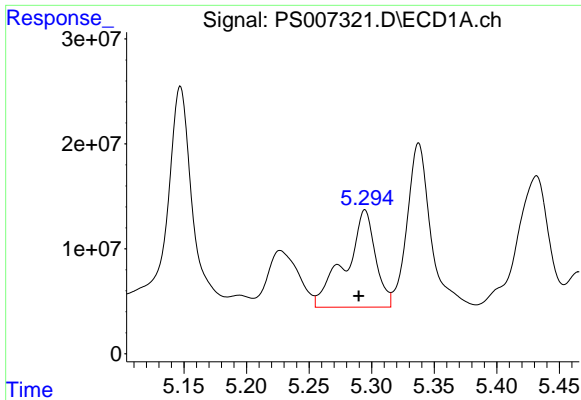
#1 Dalapon  
 R.T.: 1.661 min  
 Delta R.T.: -0.060 min  
 Response: 774980575  
 Conc: 851.62 ng/ml



#2 3,5-DICHLOROBENZOIC ACID  
 R.T.: 4.803 min  
 Delta R.T.: -0.007 min  
 Response: 61264993  
 Conc: 36.46 ng/ml

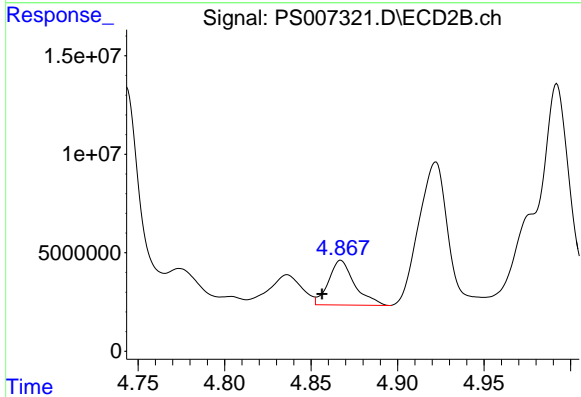


#2 3,5-DICHLOROBENZOIC ACID  
 R.T.: 4.481 min  
 Delta R.T.: 0.007 min  
 Response: 270869075  
 Conc: 314.81 ng/ml

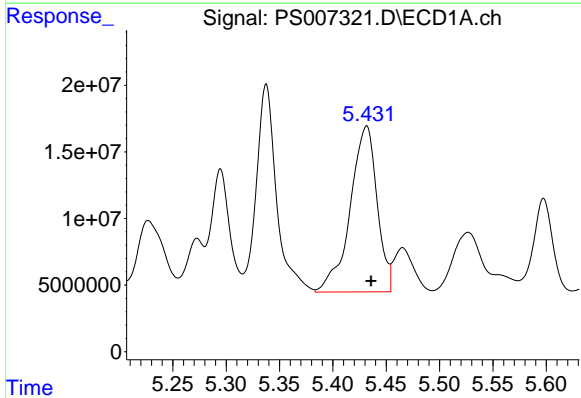


#3 4-Nitrophenol  
 R.T.: 5.295 min  
 Delta R.T.: 0.005 min  
 Response: 154101159  
 Conc: 256.63 ng/ml

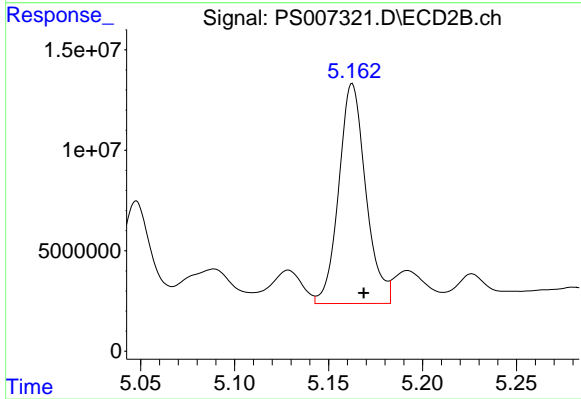
Instrument :  
 ECD\_S  
 ClientSampled :



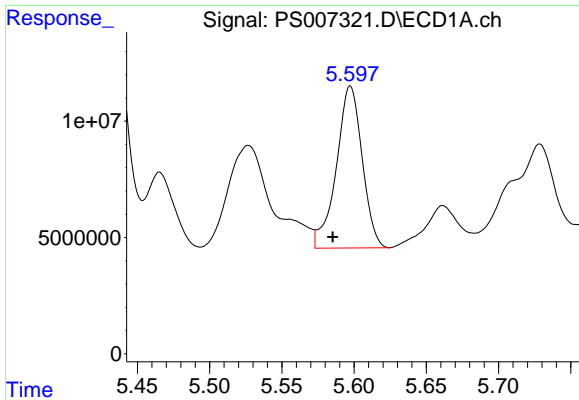
#3 4-Nitrophenol  
 R.T.: 4.867 min  
 Delta R.T.: 0.011 min  
 Response: 23743233  
 Conc: 60.13 ng/ml



#4 2,4-DCAA  
 R.T.: 5.431 min  
 Delta R.T.: -0.005 min  
 Response: 218732325  
 Conc: 159.81 ng/ml

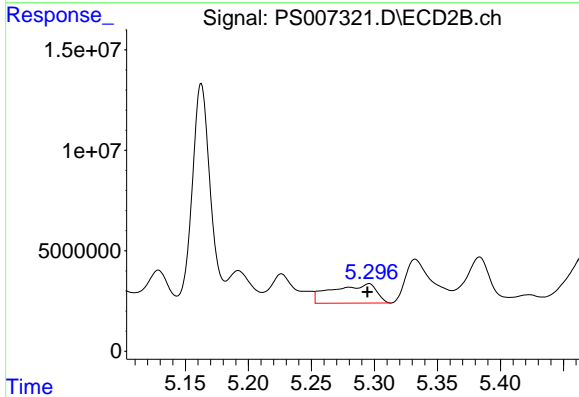


#4 2,4-DCAA  
 R.T.: 5.163 min  
 Delta R.T.: -0.006 min  
 Response: 109688860  
 Conc: 155.96 ng/ml

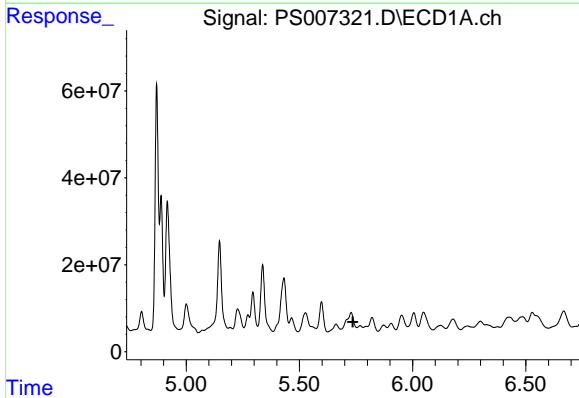


#5 DICAMBA  
 R.T.: 5.597 min  
 Delta R.T.: 0.012 min  
 Response: 86736537  
 Conc: 17.65 ng/ml

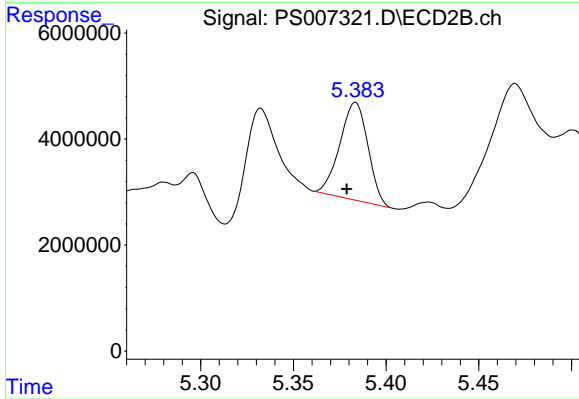
Instrument :  
 ECD\_S  
 ClientSampled :



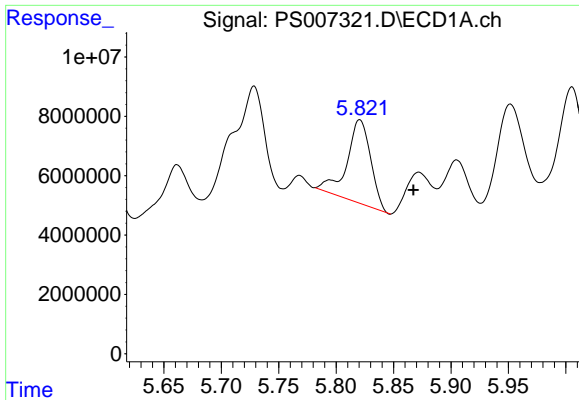
#5 DICAMBA  
 R.T.: 5.295 min  
 Delta R.T.: 0.000 min  
 Response: 23228294  
 Conc: 8.93 ng/ml



#6 MCP  
 R.T.: 0.000 min  
 Exp R.T. : 5.736 min  
 Response: 0  
 Conc: N.D.

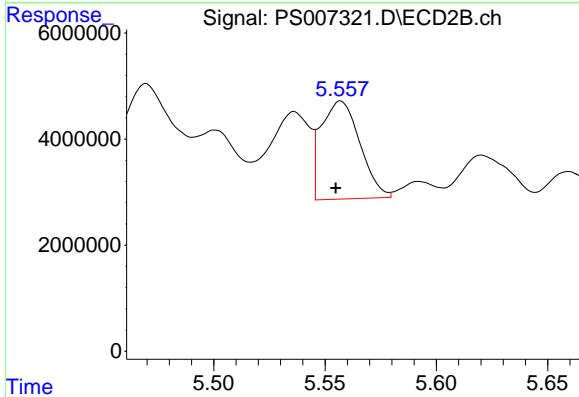


#6 MCP  
 R.T.: 5.383 min  
 Delta R.T.: 0.005 min  
 Response: 19111701  
 Conc: 10.08 ug/ml

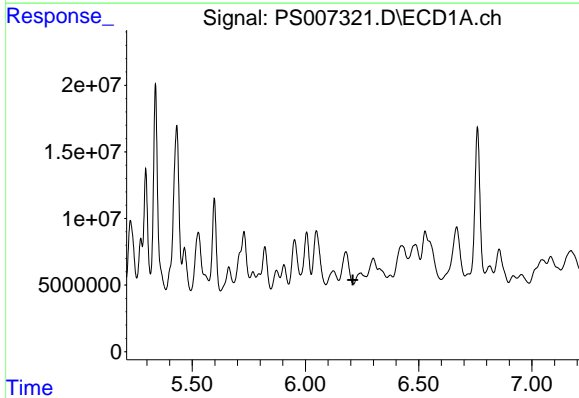


#7 MCPA  
 R.T.: 5.821 min  
 Delta R.T.: -0.047 min  
 Response: 40564592  
 Conc: 7.86 ug/ml

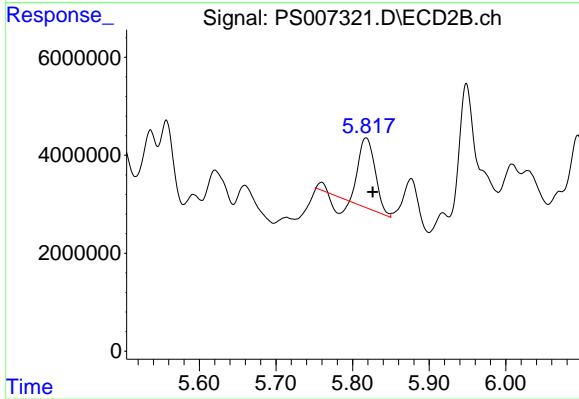
Instrument :  
 ECD\_S  
 ClientSampleId :



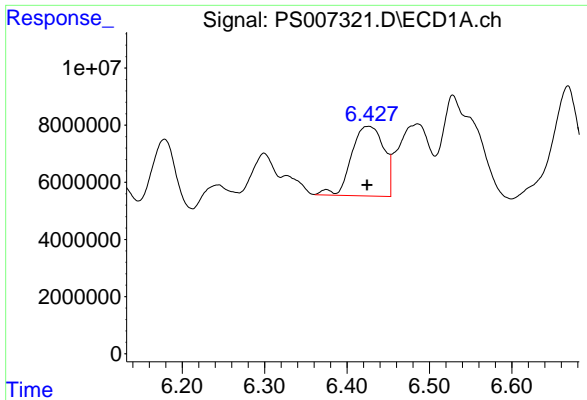
#7 MCPA  
 R.T.: 5.557 min  
 Delta R.T.: 0.002 min  
 Response: 22448641  
 Conc: 7.72 ug/ml



#8 DICHLORPROP  
 R.T.: 0.000 min  
 Exp R.T. : 6.209 min  
 Response: 0  
 Conc: N.D.



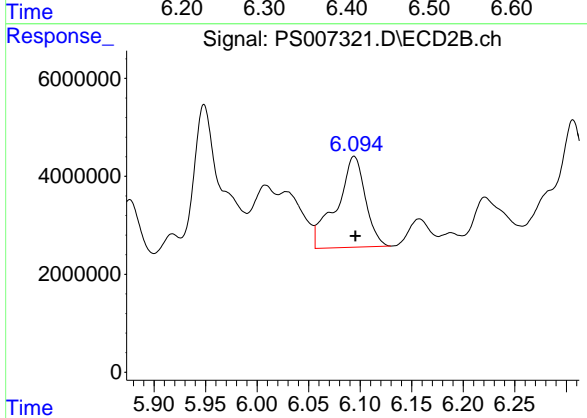
#8 DICHLORPROP  
 R.T.: 5.818 min  
 Delta R.T.: -0.009 min  
 Response: 18581900  
 Conc: 28.53 ng/ml



#9 2,4-D

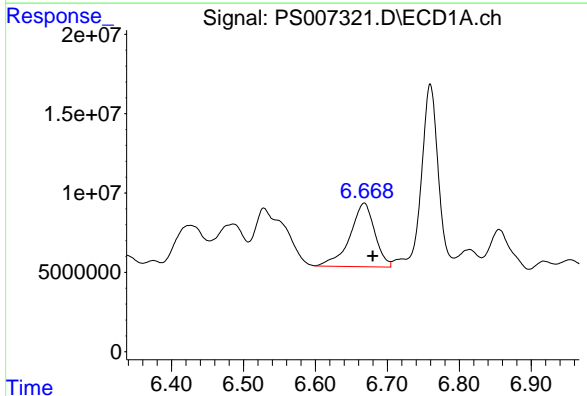
R.T.: 6.426 min  
 Delta R.T.: 0.002 min  
 Response: 66432140  
 Conc: 53.91 ng/ml

Instrument :  
 ECD\_S  
 ClientSampleId :



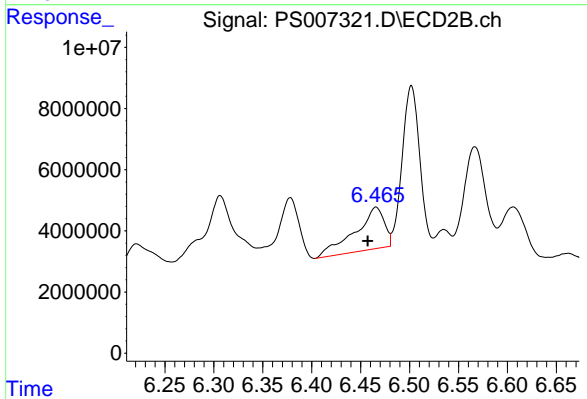
#9 2,4-D

R.T.: 6.094 min  
 Delta R.T.: -0.001 min  
 Response: 36135288  
 Conc: 45.29 ng/ml



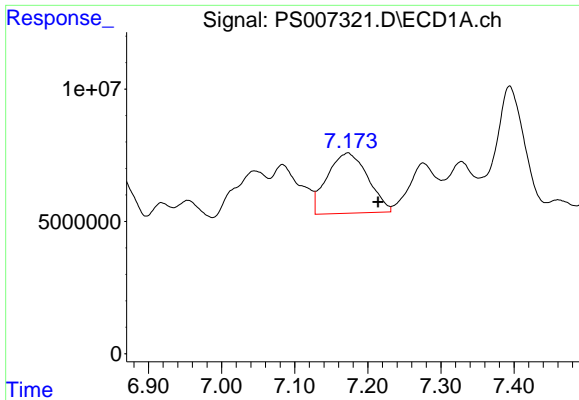
#10 Pentachlorophenol

R.T.: 6.668 min  
 Delta R.T.: -0.012 min  
 Response: 95961116  
 Conc: 5.38 ng/ml



#10 Pentachlorophenol

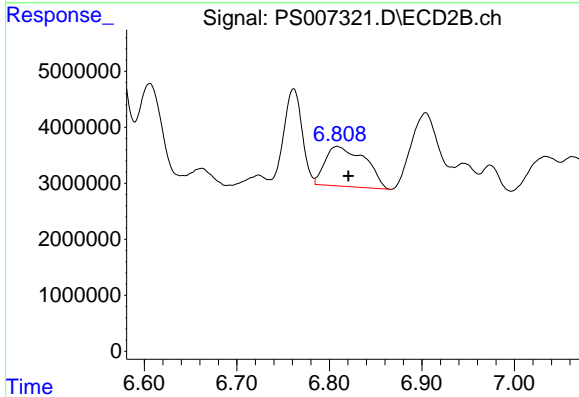
R.T.: 6.466 min  
 Delta R.T.: 0.008 min  
 Response: 28449837  
 Conc: 2.96 ng/ml



#11 2,4,5-TP (SILVEX)

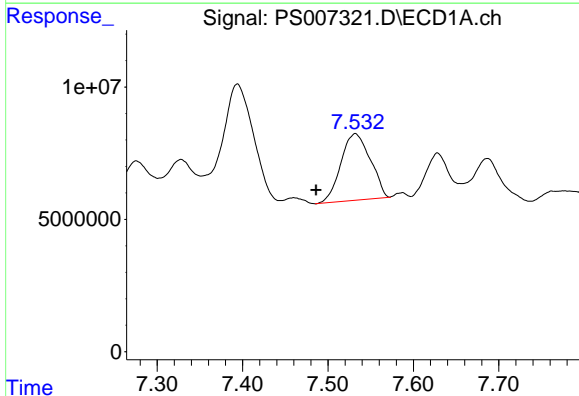
R.T.: 7.172 min  
 Delta R.T.: -0.041 min  
 Response: 87708996  
 Conc: 12.58 ng/ml

Instrument :  
 ECD\_S  
 ClientSampleId :



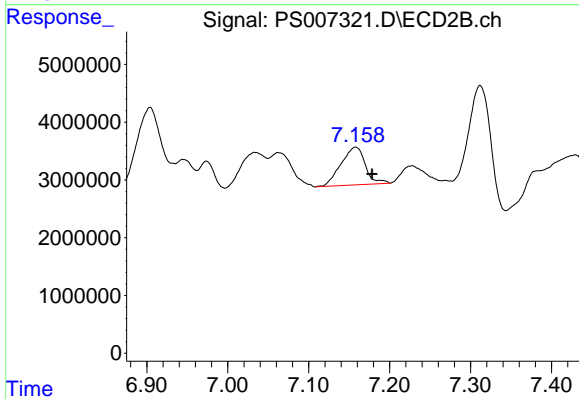
#11 2,4,5-TP (SILVEX)

R.T.: 6.809 min  
 Delta R.T.: -0.012 min  
 Response: 21420720  
 Conc: 5.63 ng/ml



#12 2,4,5-T

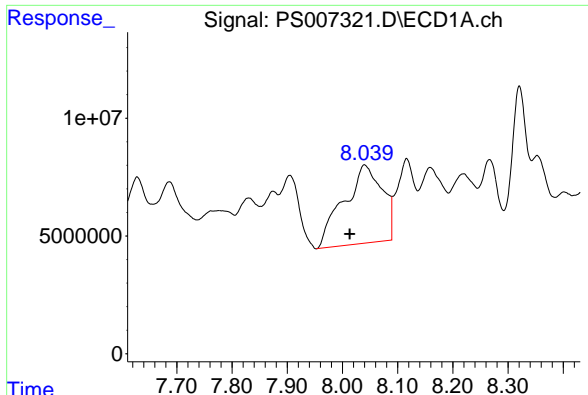
R.T.: 7.532 min  
 Delta R.T.: 0.046 min  
 Response: 60097829  
 Conc: 7.86 ng/ml



#12 2,4,5-T

R.T.: 7.158 min  
 Delta R.T.: -0.021 min  
 Response: 13660578  
 Conc: 3.90 ng/ml

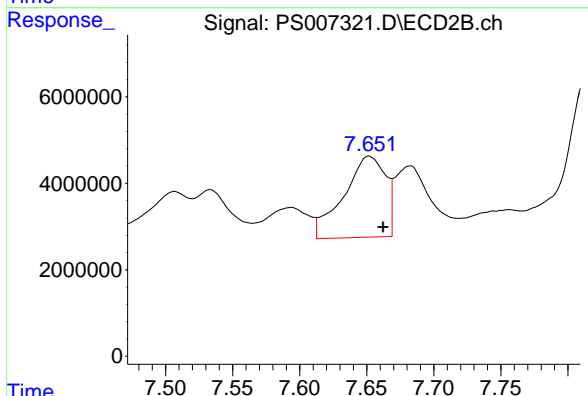




#13 2,4-DB

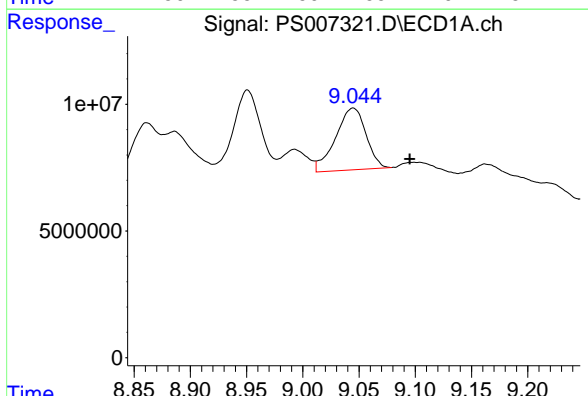
R.T.: 8.040 min  
 Delta R.T.: 0.027 min  
 Response: 160839894  
 Conc: 168.69 ng/ml

Instrument :  
 ECD\_S  
 ClientSampleId :



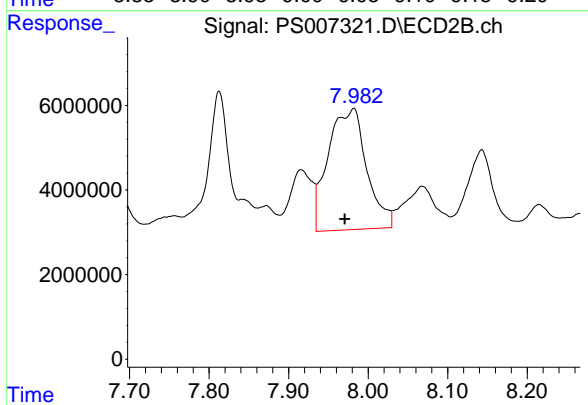
#13 2,4-DB

R.T.: 7.652 min  
 Delta R.T.: -0.010 min  
 Response: 40920909  
 Conc: 87.31 ng/ml



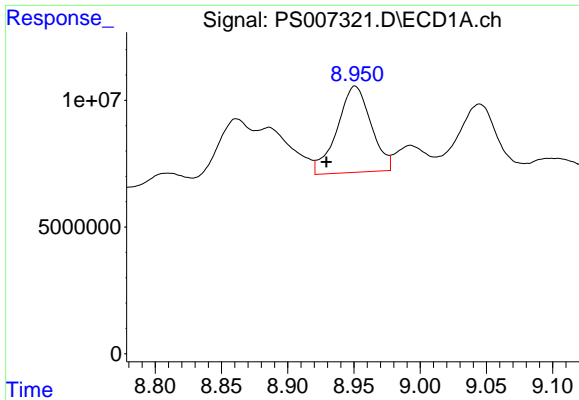
#14 DINOSEB

R.T.: 9.045 min  
 Delta R.T.: -0.051 min  
 Response: 45990903  
 Conc: 7.90 ng/ml



#14 DINOSEB

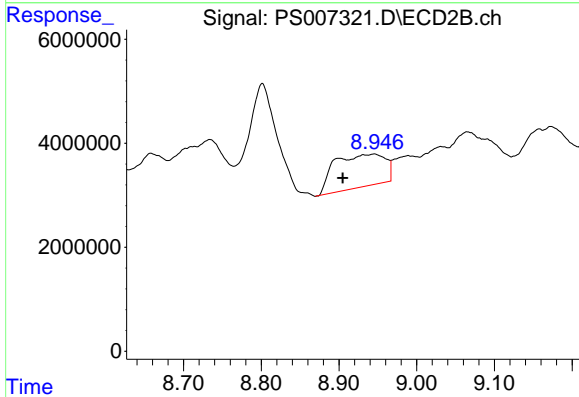
R.T.: 7.982 min  
 Delta R.T.: 0.011 min  
 Response: 96397596  
 Conc: 34.34 ng/ml



#15 Picloram

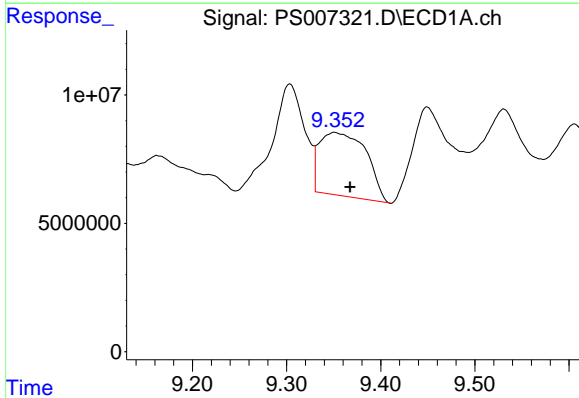
R.T.: 8.951 min  
 Delta R.T.: 0.022 min  
 Response: 60595270  
 Conc: 5.49 ng/ml

Instrument :  
 ECD\_S  
 ClientSampleId :



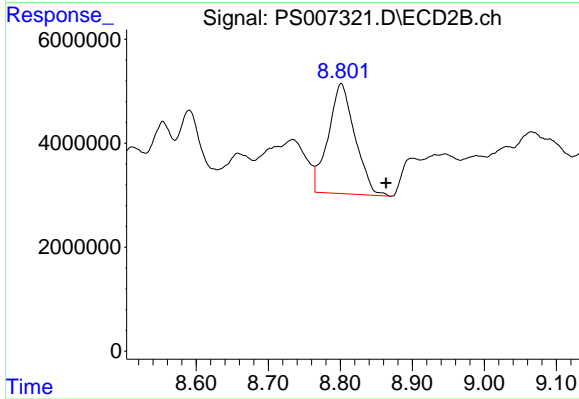
#15 Picloram

R.T.: 8.945 min  
 Delta R.T.: 0.040 min  
 Response: 28573243  
 Conc: 4.65 ng/ml



#16 DCPA

R.T.: 9.351 min  
 Delta R.T.: -0.016 min  
 Response: 84977345  
 Conc: 9.49 ng/ml



#16 DCPA

R.T.: 8.801 min  
 Delta R.T.: -0.062 min  
 Response: 54445689  
 Conc: 10.86 ng/ml