

Data Path : Z:\pestpcbsrv\HPCHEM1\ECD\_S\Data\PS102423\  
 Data File : PS024689.D  
 Signal(s) : Signal #1: ECD1A.ch Signal #2: ECD2B.ch  
 Acq On : 24 Oct 2023 13:00  
 Operator : AR\AJ  
 Sample : 04960-01  
 Misc :  
 ALS Vial : 12 Sample Multiplier: 1

Instrument :  
 ECD\_S  
 ClientSampleId :

Integration File signal 1: autoint1.e  
 Integration File signal 2: autoint2.e  
 Quant Time: Oct 24 13:20:20 2023  
 Quant Method : Z:\pestpcbsrv\HPCHEM1\ECD\_S\Method\PS100323.M  
 Quant Title : 8080.M  
 QLast Update : Tue Oct 03 14:54:54 2023  
 Response via : Initial Calibration  
 Integrator: ChemStation

Volume Inj. : 2 µl  
 Signal #1 Phase : Rtx-CLPesticides Signal #2 Phase: Rtx-CLPesticides2  
 Signal #1 Info : 30M x 0.32mm x0.5 Signal #2 Info : 30M x 0.32mm x 0.25µm

	Compound	RT#1	RT#2	Resp#1	Resp#2	ng/ml	ng/ml
-----							
System Monitoring Compounds							
4) S	2,4-DCAA	6.358	6.778	827.6E6	247.0E6	402.286	357.310
Target Compounds							
1) T	Dalapon	2.451	2.521	118.7E6	67414801	48.064	60.238 #
2) T	3,5-DICHL...	5.756	6.027f	3835905	2728373	1.223	2.511 #
3) T	4-Nitroph...	6.175	6.417	57502416	3770493	42.479	8.266 #
5) T	DICAMBA	6.519	6.980	2863601	800146	<MDL	<MDL #
6) T	MCP	6.675	7.067	55227852	11256599	8.717	5.712 #
7) T	MCPA	6.779	7.186f	8928637	18976546	1.002	5.922 #
8) T	DICHLORPROP	0.000	7.564	0	22130191	N.D.	29.427
9) T	2,4-D	7.288	7.844	6994502	5664941	2.531	6.154 #
10) T	Pentachlo...	7.512	8.253	14559344	2443959	<MDL	<MDL #
12) T	2,4,5-T	8.308	8.971	68681295	4748633	5.257	1.152 #
13) T	2,4-DB	8.810	9.497	149.3E6	6083484	73.069	11.938 #
14) T	DINOSEB	9.783f	9.800	398.8E6	6479061	39.010	2.089 #
15) T	Picloram	9.708	10.796	6271234	21326190	<MDL	3.432 #
16) T	DCPA	0.000	10.796f	0	21326190	N.D.	4.087
-----							

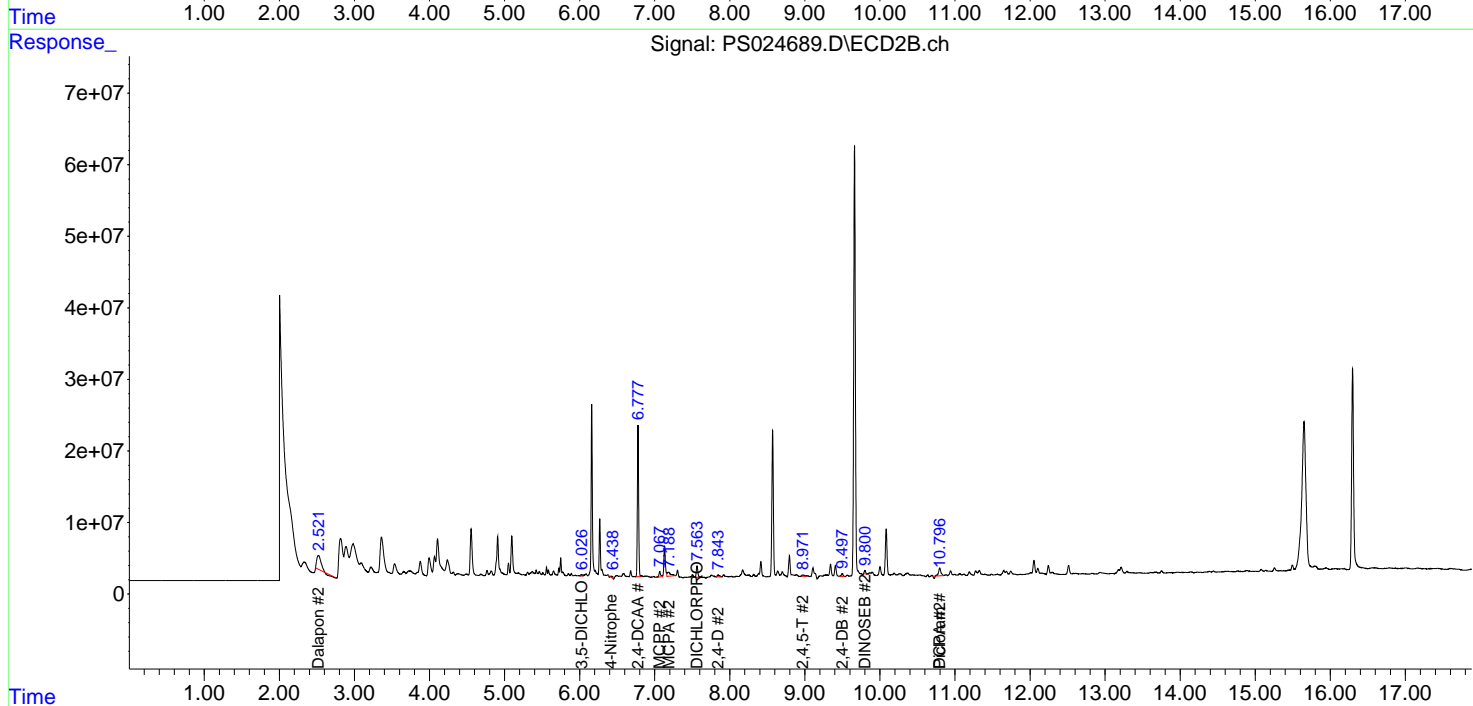
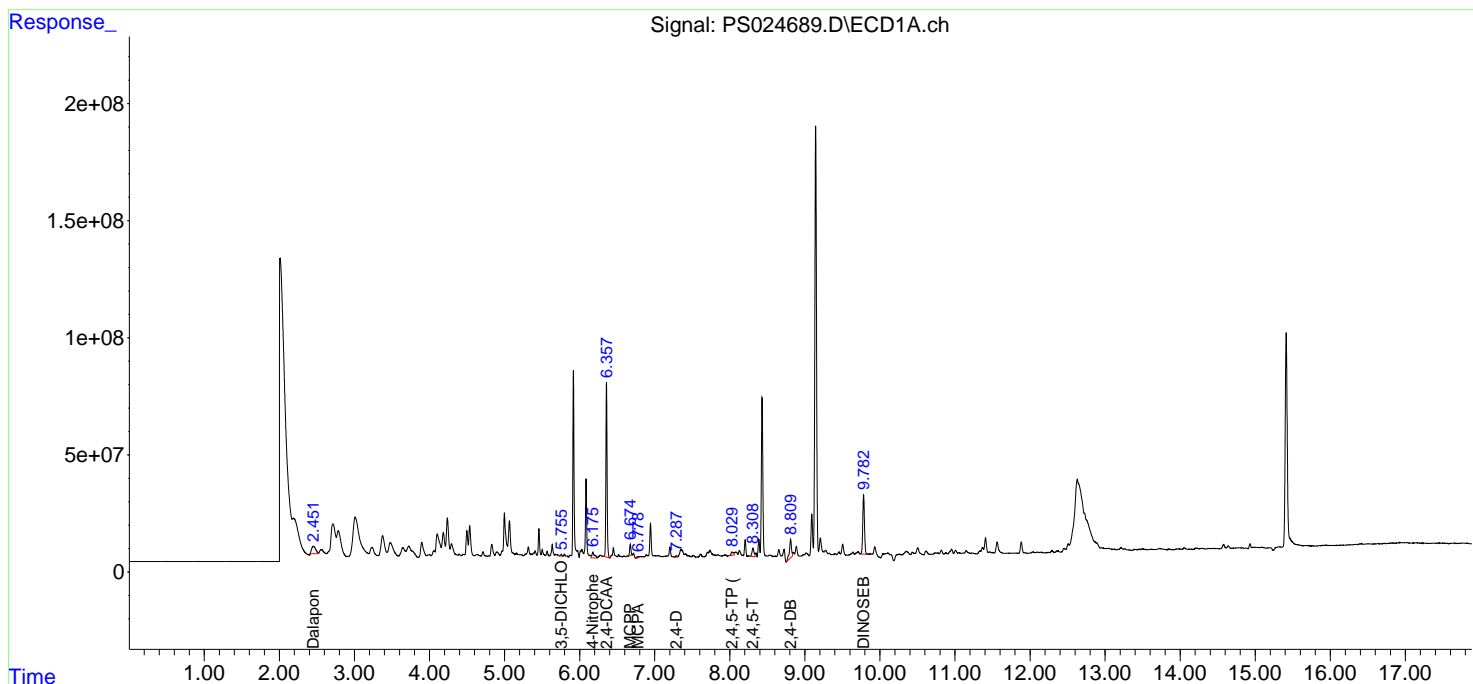
(f)=RT Delta > 1/2 Window (#)=Amounts differ by > 25% (m)=manual int.

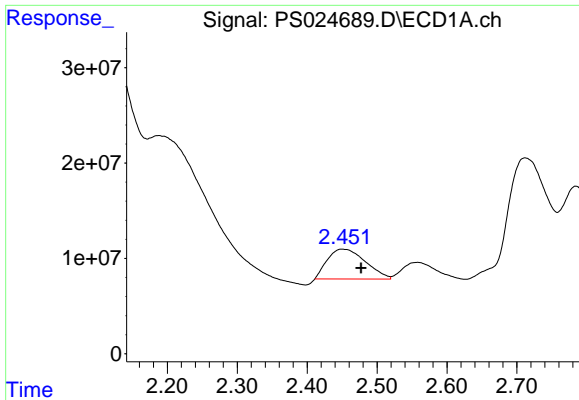
Data Path : Z:\pestpcbsrv\HPCHEM1\ECD\_S\Data\PS102423\  
 Data File : PS024689.D  
 Signal(s) : Signal #1: ECD1A.ch Signal #2: ECD2B.ch  
 Acq On : 24 Oct 2023 13:00  
 Operator : AR\AJ  
 Sample : 04960-01  
 Misc :  
 ALS Vial : 12 Sample Multiplier: 1

Instrument :  
 ECD\_S  
 ClientSampleId :

Integration File signal 1: autoint1.e  
 Integration File signal 2: autoint2.e  
 Quant Time: Oct 24 13:20:20 2023  
 Quant Method : Z:\pestpcbsrv\HPCHEM1\ECD\_S\Method\PS100323.M  
 Quant Title : 8080.M  
 QLast Update : Tue Oct 03 14:54:54 2023  
 Response via : Initial Calibration  
 Integrator: ChemStation

Volume Inj. : 2 µl  
 Signal #1 Phase : Rtx-CLPesticides Signal #2 Phase: Rtx-CLPesticides2  
 Signal #1 Info : 30M x 0.32mm x0.5 Signal #2 Info : 30M x 0.32mm x 0.25µm

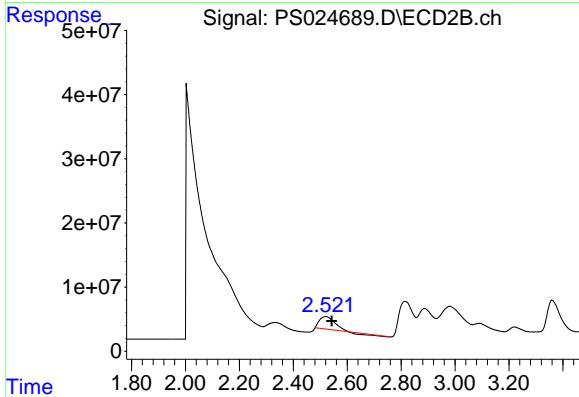




#1 Dalapon

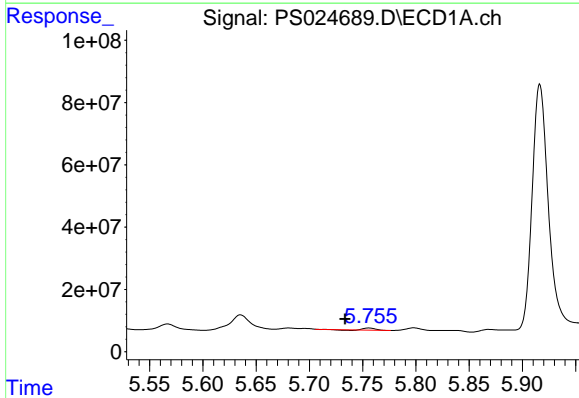
R.T.: 2.451 min  
 Delta R.T.: -0.026 min  
 Response: 118745538  
 Conc: 48.06 ng/ml

Instrument :  
 ECD\_S  
 ClientSampleId :



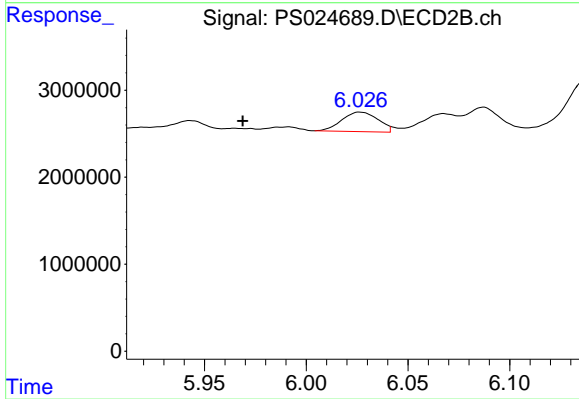
#1 Dalapon

R.T.: 2.521 min  
 Delta R.T.: -0.022 min  
 Response: 67414801  
 Conc: 60.24 ng/ml



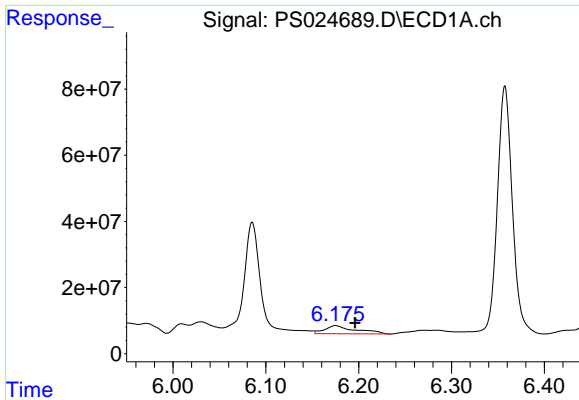
#2 3,5-DICHLOROBENZOIC ACID

R.T.: 5.756 min  
 Delta R.T.: 0.022 min  
 Response: 3835905  
 Conc: 1.22 ng/ml



#2 3,5-DICHLOROBENZOIC ACID

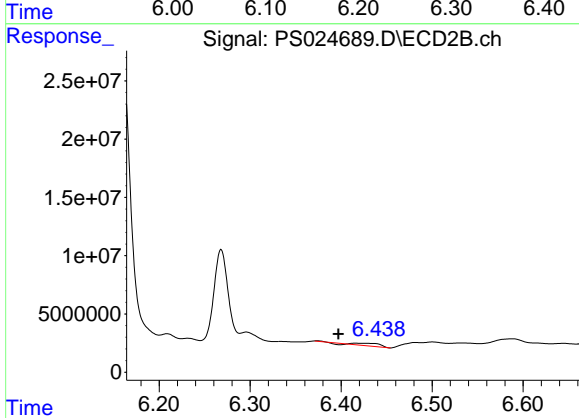
R.T.: 6.027 min  
 Delta R.T.: 0.058 min  
 Response: 2728373  
 Conc: 2.51 ng/ml



#3 4-Nitrophenol

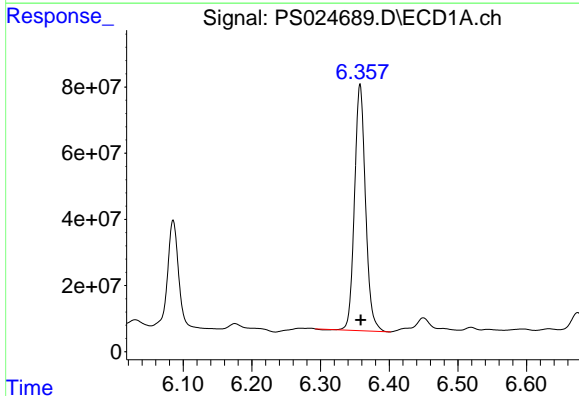
R.T.: 6.175 min  
 Delta R.T.: -0.021 min  
 Response: 57502416  
 Conc: 42.48 ng/ml

Instrument :  
 ECD\_S  
 ClientSampleId :



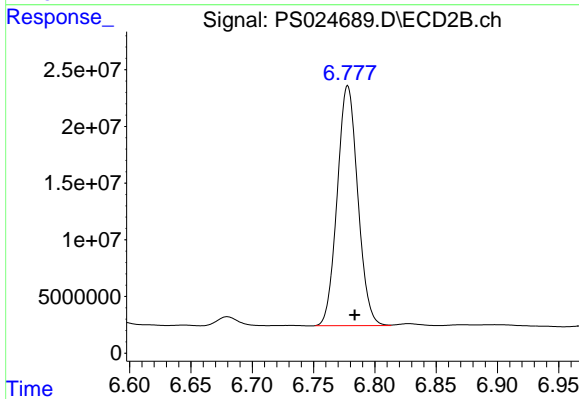
#3 4-Nitrophenol

R.T.: 6.417 min  
 Delta R.T.: 0.020 min  
 Response: 3770493  
 Conc: 8.27 ng/ml



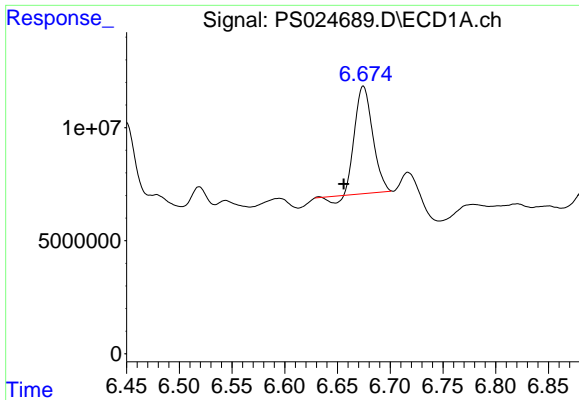
#4 2,4-DCAA

R.T.: 6.358 min  
 Delta R.T.: -0.001 min  
 Response: 827634147  
 Conc: 402.29 ng/ml



#4 2,4-DCAA

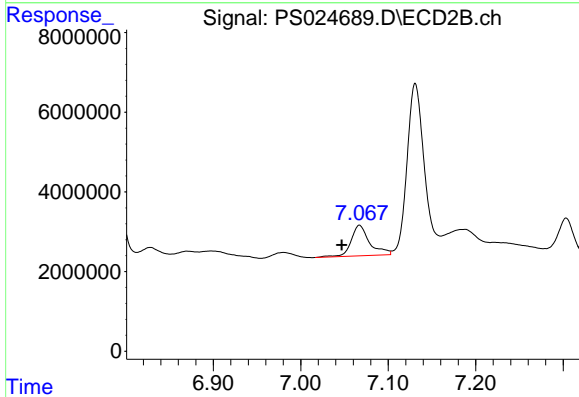
R.T.: 6.778 min  
 Delta R.T.: -0.006 min  
 Response: 247005367  
 Conc: 357.31 ng/ml



#6 MCPP

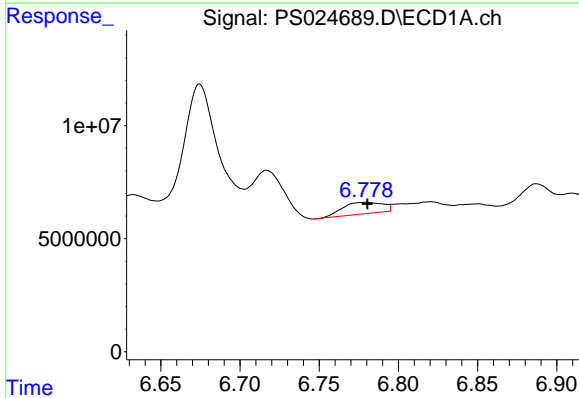
R.T.: 6.675 min  
 Delta R.T.: 0.019 min  
 Response: 55227852  
 Conc: 8.72 ug/ml

Instrument :  
 ECD\_S  
 ClientSampleId :



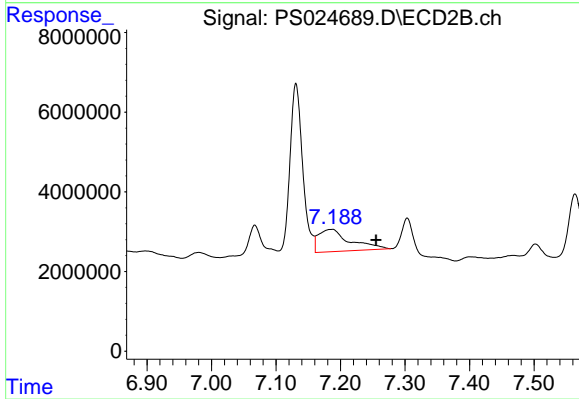
#6 MCPP

R.T.: 7.067 min  
 Delta R.T.: 0.020 min  
 Response: 11256599  
 Conc: 5.71 ug/ml



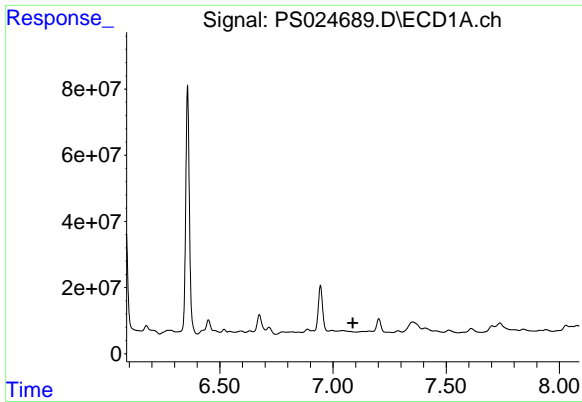
#7 MCPA

R.T.: 6.779 min  
 Delta R.T.: -0.001 min  
 Response: 8928637  
 Conc: 1.00 ug/ml



#7 MCPA

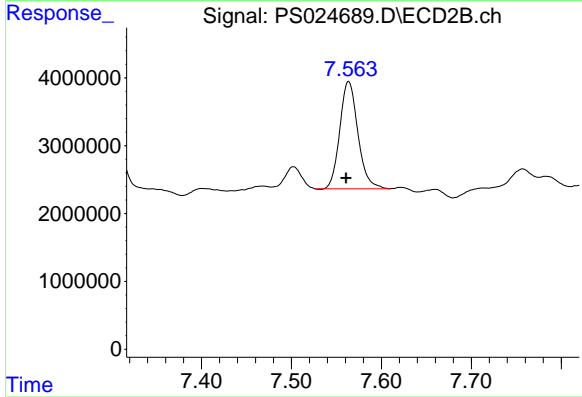
R.T.: 7.186 min  
 Delta R.T.: -0.069 min  
 Response: 18976546  
 Conc: 5.92 ug/ml



#8 DICHLORPROP

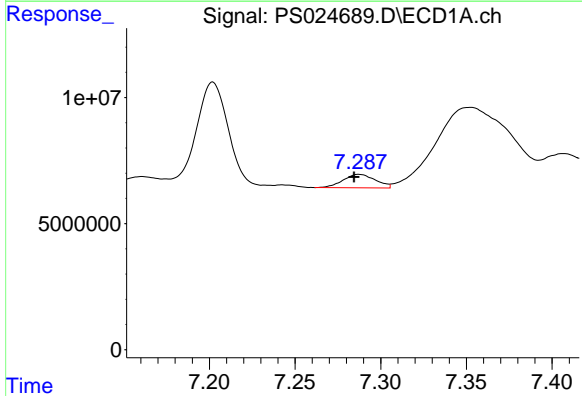
R.T.: 0.000 min  
 Exp R.T.: 7.088 min  
 Response: 0  
 Conc: N.D.

Instrument :  
 ECD\_S  
 ClientSampleId :



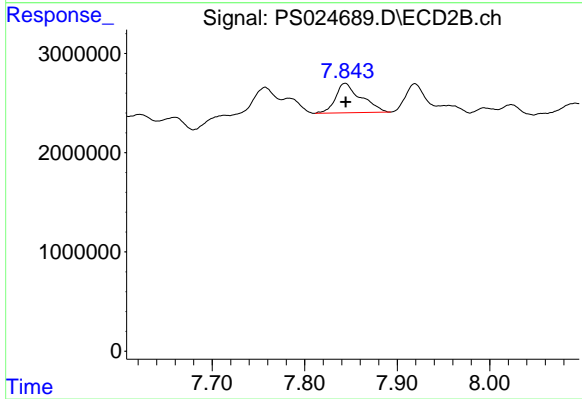
#8 DICHLORPROP

R.T.: 7.564 min  
 Delta R.T.: 0.003 min  
 Response: 22130191  
 Conc: 29.43 ng/ml



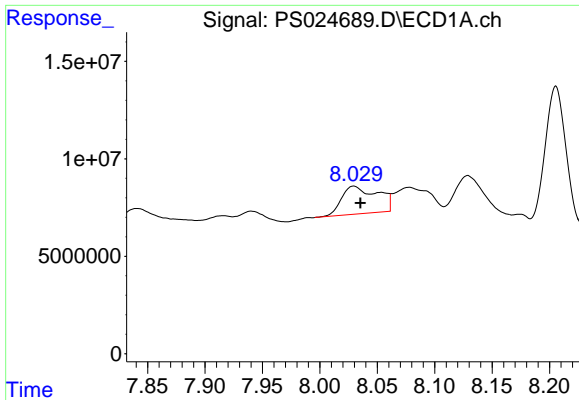
#9 2,4-D

R.T.: 7.288 min  
 Delta R.T.: 0.003 min  
 Response: 6994502  
 Conc: 2.53 ng/ml



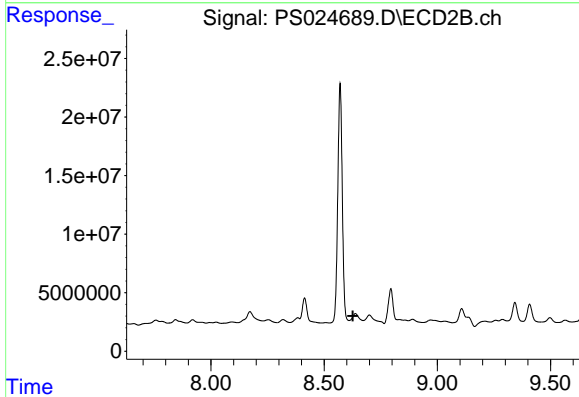
#9 2,4-D

R.T.: 7.844 min  
 Delta R.T.: 0.000 min  
 Response: 5664941  
 Conc: 6.15 ng/ml

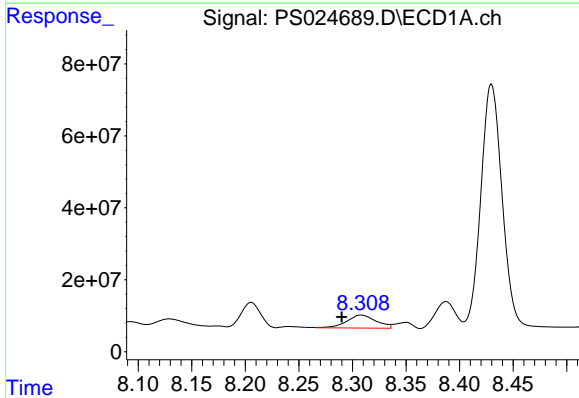


#11 2,4,5-TP (SILVEX)  
 R.T.: 8.030 min  
 Delta R.T.: -0.005 min  
 Response: 30888690  
 Conc: 2.23 ng/ml

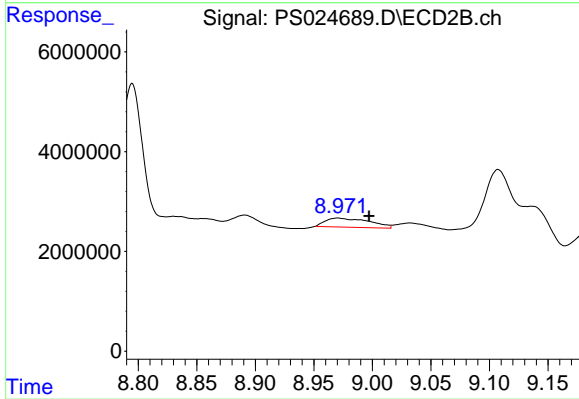
Instrument :  
 ECD\_S  
 ClientSampleId :



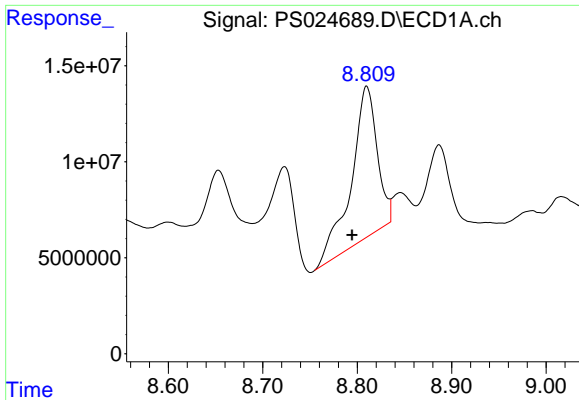
#11 2,4,5-TP (SILVEX)  
 R.T.: 8.638 min  
 Delta R.T.: 0.011 min  
 Response: -42009790  
 Conc: N.D.



#12 2,4,5-T  
 R.T.: 8.308 min  
 Delta R.T.: 0.018 min  
 Response: 68681295  
 Conc: 5.26 ng/ml



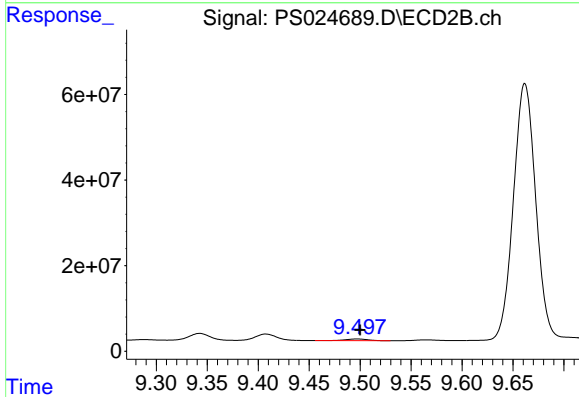
#12 2,4,5-T  
 R.T.: 8.971 min  
 Delta R.T.: -0.026 min  
 Response: 4748633  
 Conc: 1.15 ng/ml



#13 2,4-DB

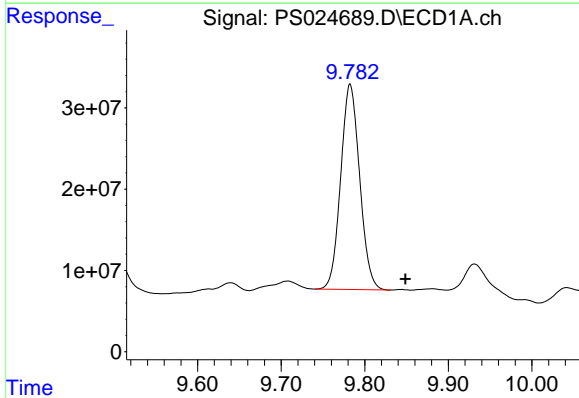
R.T.: 8.810 min  
 Delta R.T.: 0.016 min  
 Response: 149276090  
 Conc: 73.07 ng/ml

Instrument :  
 ECD\_S  
 ClientSampleId :



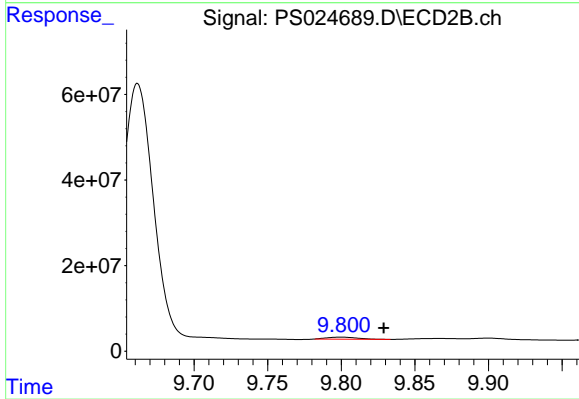
#13 2,4-DB

R.T.: 9.497 min  
 Delta R.T.: -0.003 min  
 Response: 6083484  
 Conc: 11.94 ng/ml



#14 DINOSEB

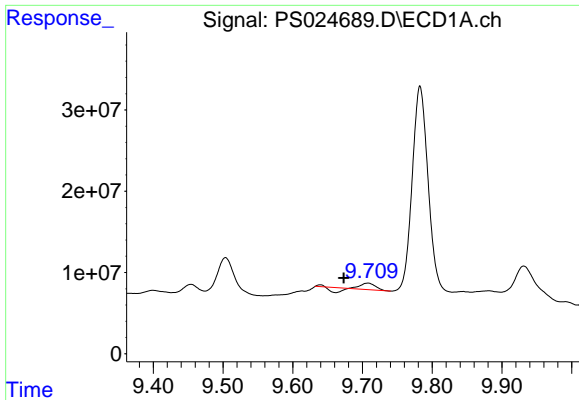
R.T.: 9.783 min  
 Delta R.T.: -0.066 min  
 Response: 398785259  
 Conc: 39.01 ng/ml



#14 DINOSEB

R.T.: 9.800 min  
 Delta R.T.: -0.029 min  
 Response: 6479061  
 Conc: 2.09 ng/ml

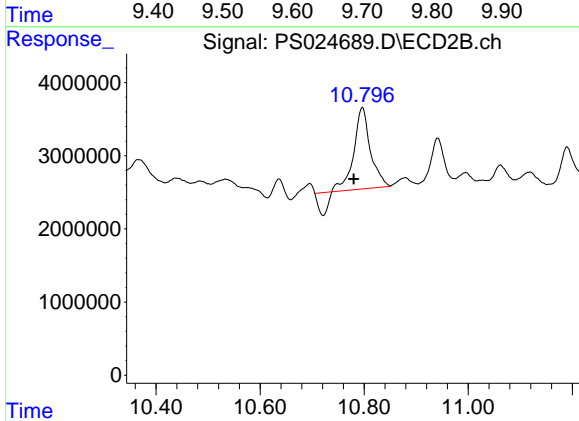




#15 Picloram

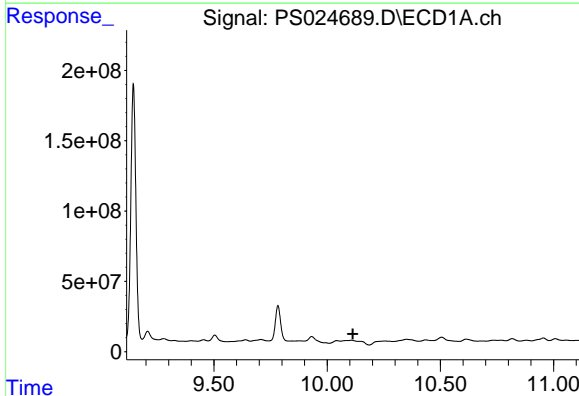
R.T.: 9.708 min  
 Delta R.T.: 0.034 min  
 Response: 6271234  
 Conc: N.D.

Instrument :  
 ECD\_S  
 ClientSampleId :



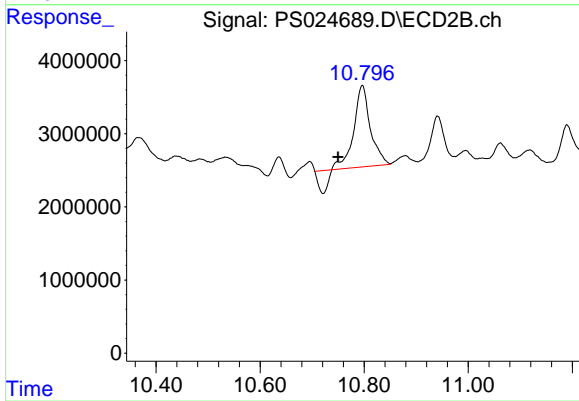
#15 Picloram

R.T.: 10.796 min  
 Delta R.T.: 0.016 min  
 Response: 21326190  
 Conc: 3.43 ng/ml



#16 DCPA

R.T.: 0.000 min  
 Exp R.T. : 10.114 min  
 Response: 0  
 Conc: N.D.



#16 DCPA

R.T.: 10.796 min  
 Delta R.T.: 0.046 min  
 Response: 21326190  
 Conc: 4.09 ng/ml