

Data Path : Z:\pestpcbsrv\HPCHEM1\ECD_S\Data\PS102521\
 Data File : PS017177.D
 Signal(s) : Signal #1: ECD1A.ch Signal #2: ECD2B.ch
 Acq On : 25 Oct 2021 16:11
 Operator : DD\AJ
 Sample : PB140210BL
 Misc :
 ALS Vial : 11 Sample Multiplier: 1

Instrument :
 ECD_S
 ClientSampleId :
 PB140210BL

Integration File signal 1: autoint1.e
 Integration File signal 2: autoint2.e
 Quant Time: Oct 26 02:01:34 2021
 Quant Method : Z:\pestpcbsrv\HPCHEM1\ECD_S\Method\PS101821.M
 Quant Title : 8080.M
 QLast Update : Tue Oct 19 01:21:46 2021
 Response via : Initial Calibration
 Integrator: ChemStation

Volume Inj. : 2 µl
 Signal #1 Phase : Rtx-CLPesticides Signal #2 Phase: Rtx-CLPesticides2
 Signal #1 Info : 30M x 0.32mm x0.5 Signal #2 Info : 30M x 0.32mm x 0.25µm

Compound	RT#1	RT#2	Resp#1	Resp#2	ng/ml	ng/ml

System Monitoring Compounds						
4) S 2,4-DCAA	7.155	6.733	728.7E6	317.0E6	476.787	542.357

Target Compounds

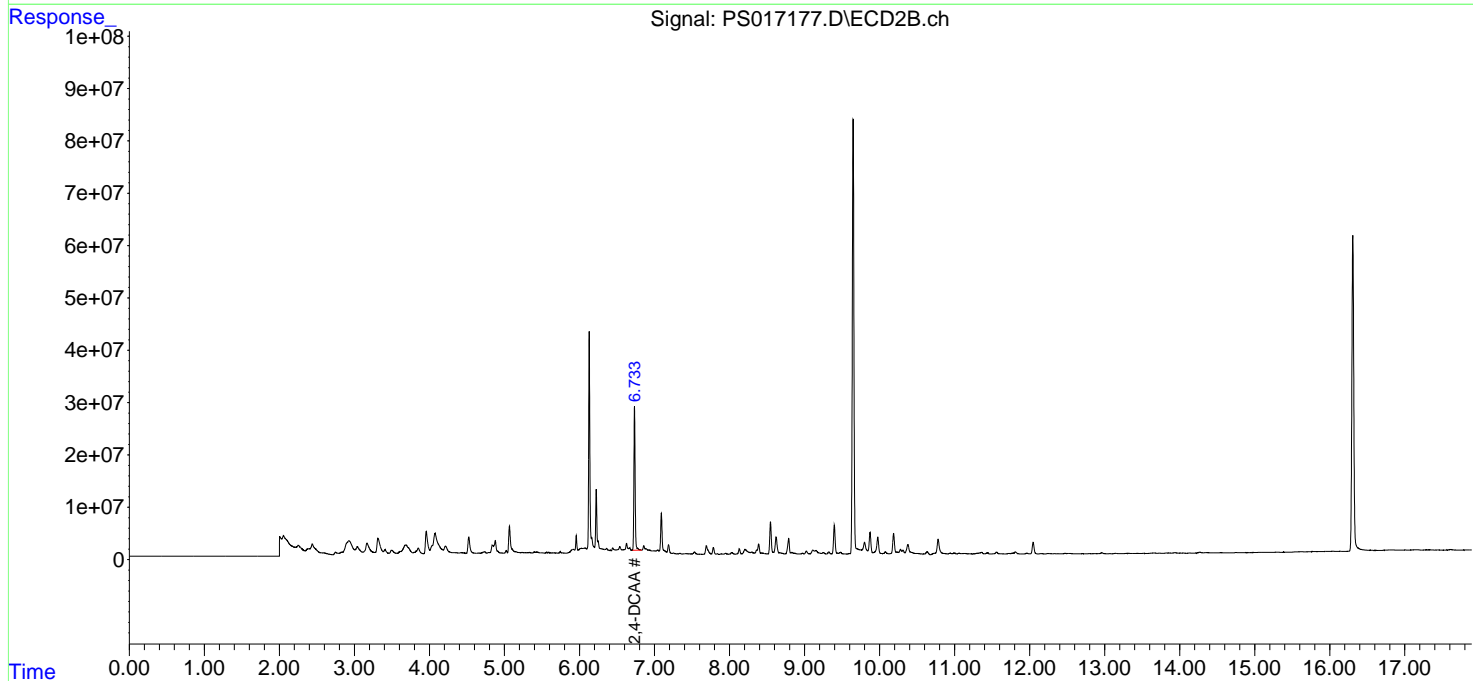
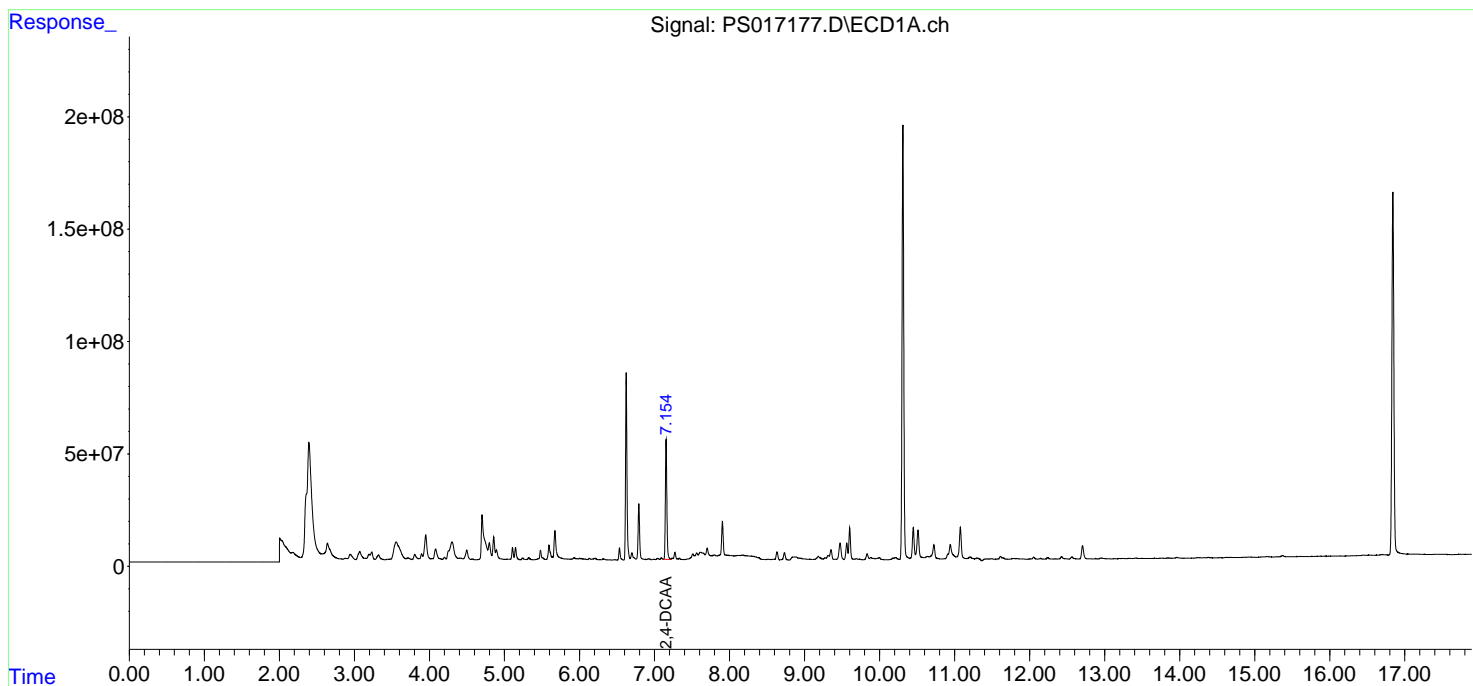
(f)=RT Delta > 1/2 Window (#)=Amounts differ by > 25% (m)=manual int.

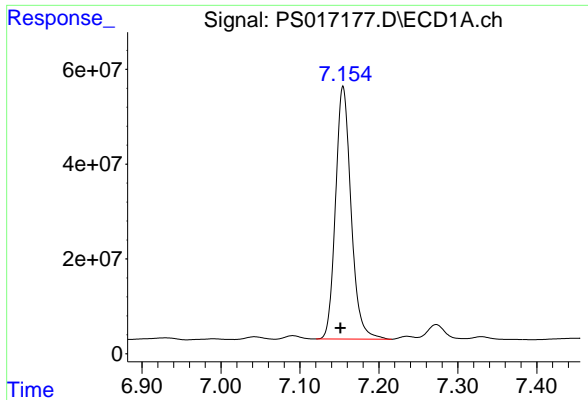
Data Path : Z:\pestpcbsrv\HPCHEM1\ECD_S\Data\PS102521\
Data File : PS017177.D
Signal(s) : Signal #1: ECD1A.ch Signal #2: ECD2B.ch
Acq On : 25 Oct 2021 16:11
Operator : DD\AJ
Sample : PB140210BL
Misc :
ALS Vial : 11 Sample Multiplier: 1

Instrument :
ECD_S
ClientSampled :
PB140210BL

Integration File signal 1: autoint1.e
Integration File signal 2: autoint2.e
Quant Time: Oct 26 02:01:34 2021
Quant Method : Z:\pestpcbsrv\HPCHEM1\ECD_S\Method\PS101821.M
Quant Title : 8080.M
QLast Update : Tue Oct 19 01:21:46 2021
Response via : Initial Calibration
Integrator: ChemStation

Volume Inj. : 2 µl
Signal #1 Phase : Rtx-CLPesticides Signal #2 Phase: Rtx-CLPesticides2
Signal #1 Info : 30M x 0.32mm x 0.5 Signal #2 Info : 30M x 0.32mm x 0.25µm

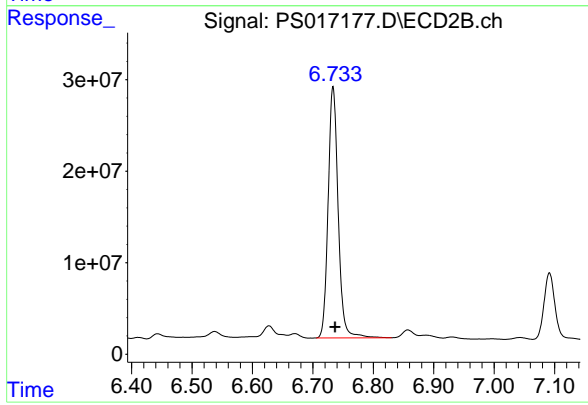




#4 2,4-DCAA

R.T.: 7.155 min
Delta R.T.: 0.003 min
Response: 728749240
Conc: 476.79 ng/ml

Instrument :
ECD_S
ClientSampleId :
PB140210BL



#4 2,4-DCAA

R.T.: 6.733 min
Delta R.T.: -0.003 min
Response: 316976200
Conc: 542.36 ng/ml