

Data Path : Z:\pestpcbsrv\HPCHEM1\ECD_S\Data\PS102721\
 Data File : PS017245.D
 Signal(s) : Signal #1: ECD1A.ch Signal #2: ECD2B.ch
 Acq On : 27 Oct 2021 15:54
 Operator : DD\AJ
 Sample : M4330-02
 Misc :
 ALS Vial : 11 Sample Multiplier: 1

Instrument :
 ECD_S
 ClientSampleId :

Integration File signal 1: autoint1.e
 Integration File signal 2: autoint2.e
 Quant Time: Oct 28 01:30:03 2021
 Quant Method : Z:\pestpcbsrv\HPCHEM1\ECD_S\Method\PS101821.M
 Quant Title : 8080.M
 QLast Update : Tue Oct 19 01:21:46 2021
 Response via : Initial Calibration
 Integrator: ChemStation

Volume Inj. : 2 µl
 Signal #1 Phase : Rtx-CLPesticides Signal #2 Phase: Rtx-CLPesticides2
 Signal #1 Info : 30M x 0.32mm x0.5 Signal #2 Info : 30M x 0.32mm x 0.25µm

Compound	RT#1	RT#2	Resp#1	Resp#2	ng/ml	ng/ml

System Monitoring Compounds						
4) S 2,4-DCAA	7.152	6.738	715.7E6	261.6E6	468.262	447.604
Target Compounds						
1) T Dalapon	2.943f	2.449f	85986898	54515556	39.600	84.253 #
2) T 3,5-DICHL...	6.316f	5.960	6807441	60693589	3.153	69.881 #
3) T 4-Nitroph...	6.964	6.393	54741700	48561305	62.766	150.650 #
5) T DICAMBA	7.325	6.889	14300165	9095536	2.387	3.572 #
6) T MCPP	7.507	6.990	41233015	21009400	9.223	10.432
7) T MCPA	7.653	0.000	60595511	0	9.822	N.D. #
8) T DICHLORPROP	7.983f	7.498	82497777	10589657	55.021	16.467 #
9) T 2,4-D	8.326f	7.790	29800433	43447185	16.825	57.731 #
10) T Pentachlo...	8.567	8.230	604.3E6	249.9E6	29.125	30.602
11) T 2,4,5-TP ...	9.094	8.578	23881998	15622906	2.937	4.532 #
12) T 2,4,5-T	9.390	8.958	82406689	20494403	10.260	6.466 #
13) T 2,4-DB	9.951	0.000	36680202	0	24.383	N.D. #
14) T DINOSEB	11.071	9.762	101.2E6	7633642	17.857	3.459 #
15) T Picloram	10.902	0.000	98946873	0	9.263	N.D. #
16) T DCPA	11.371	0.000	16141307	0	1.585	N.D. #

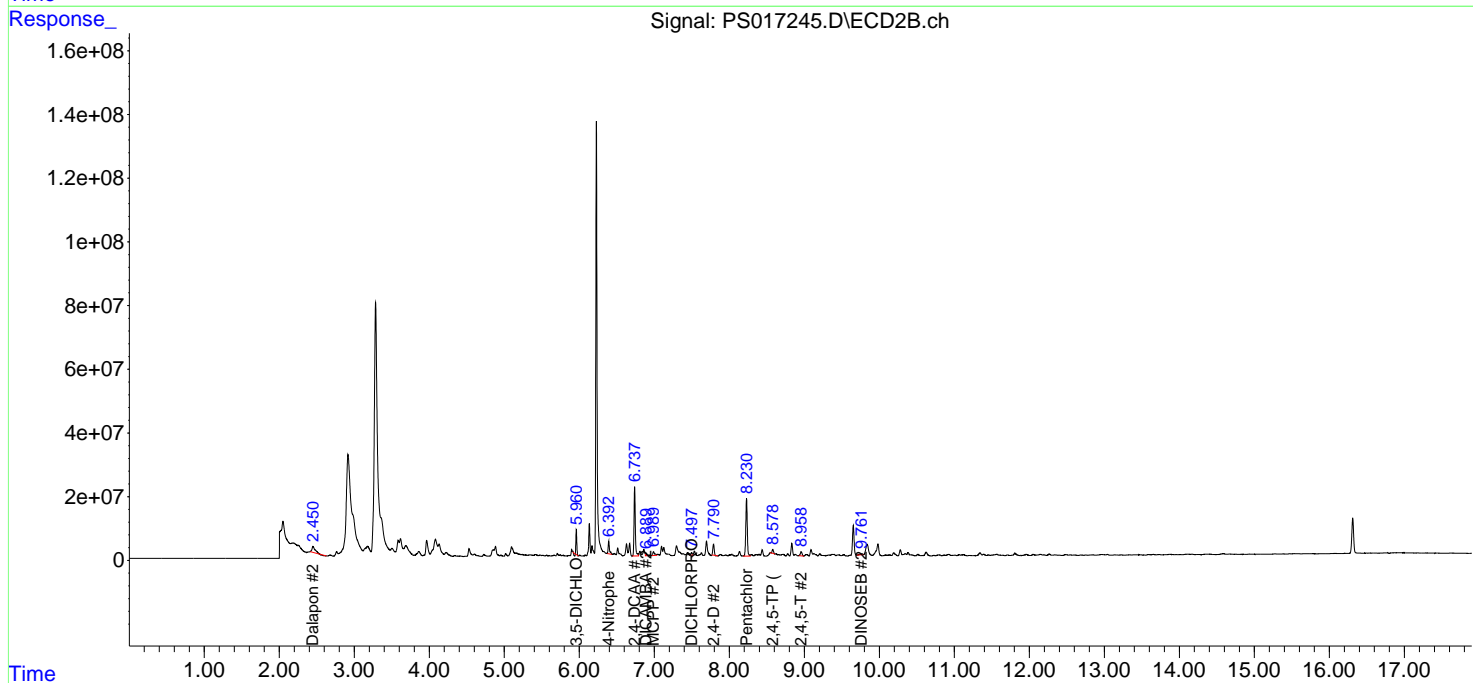
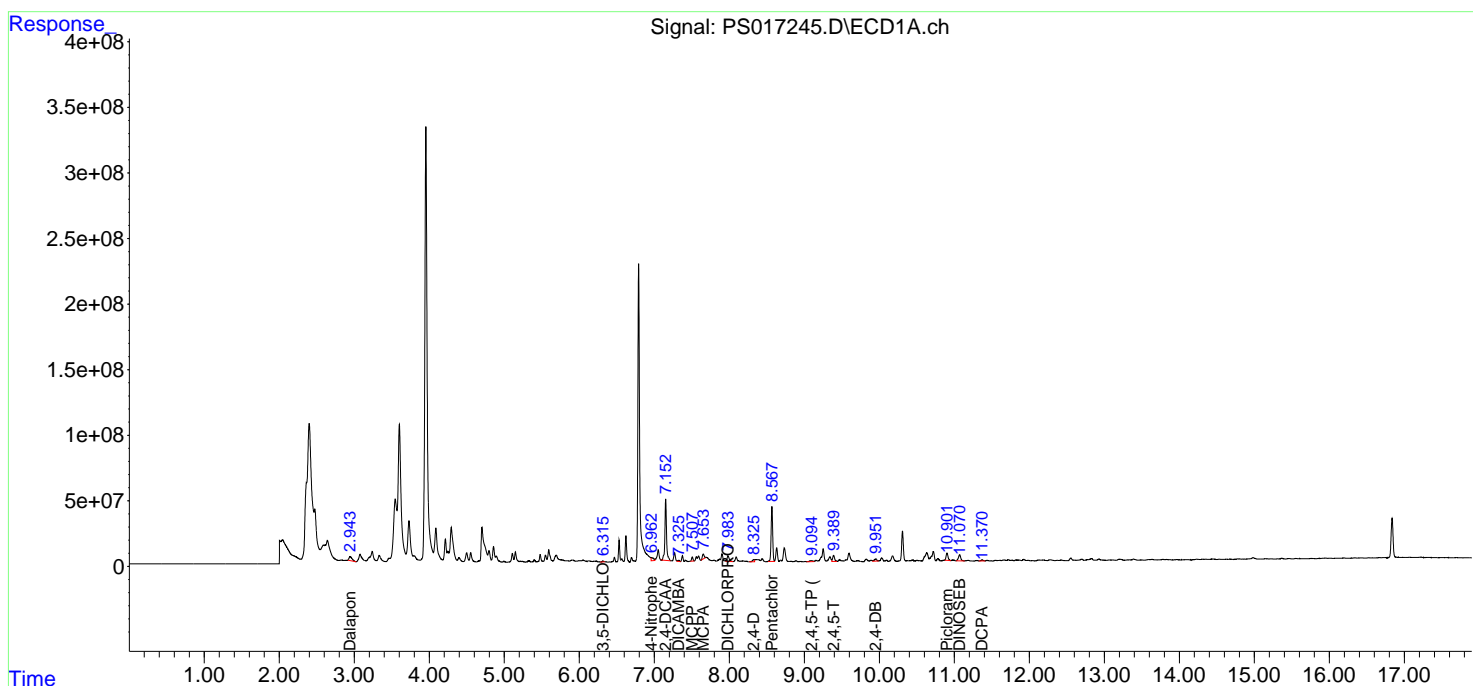
(f)=RT Delta > 1/2 Window (#)=Amounts differ by > 25% (m)=manual int.

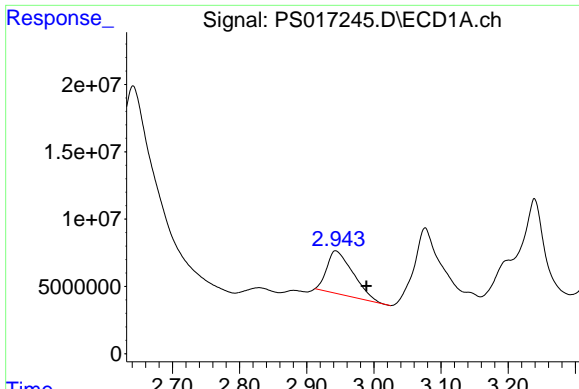
Data Path : Z:\pestpcbsrv\HPCHEM1\ECD_S\Data\PS102721\
 Data File : PS017245.D
 Signal(s) : Signal #1: ECD1A.ch Signal #2: ECD2B.ch
 Acq On : 27 Oct 2021 15:54
 Operator : DD\AJ
 Sample : M4330-02
 Misc :
 ALS Vial : 11 Sample Multiplier: 1

Instrument :
 ECD_S
 ClientSampled :

Integration File signal 1: autoint1.e
 Integration File signal 2: autoint2.e
 Quant Time: Oct 28 01:30:03 2021
 Quant Method : Z:\pestpcbsrv\HPCHEM1\ECD_S\Method\PS101821.M
 Quant Title : 8080.M
 QLast Update : Tue Oct 19 01:21:46 2021
 Response via : Initial Calibration
 Integrator: ChemStation

Volume Inj. : 2 µl
 Signal #1 Phase : Rtx-CLPesticides Signal #2 Phase: Rtx-CLPesticides2
 Signal #1 Info : 30M x 0.32mm x0.5 Signal #2 Info : 30M x 0.32mm x 0.25µm

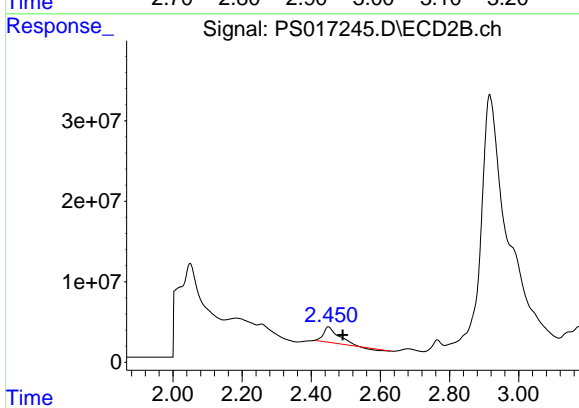




#1 Dalapon

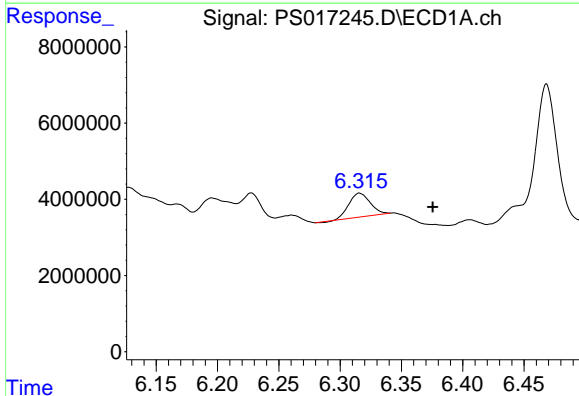
R.T.: 2.943 min
 Delta R.T.: -0.046 min
 Response: 85986898
 Conc: 39.60 ng/ml

Instrument :
 ECD_S
 ClientSampleId :



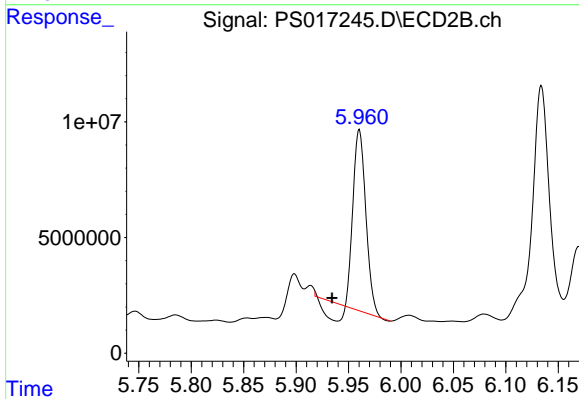
#1 Dalapon

R.T.: 2.449 min
 Delta R.T.: -0.042 min
 Response: 54515556
 Conc: 84.25 ng/ml



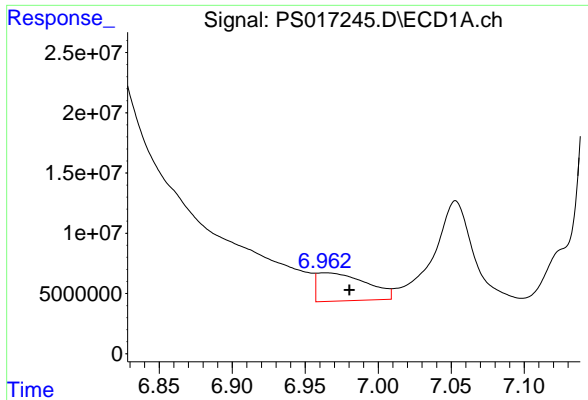
#2 3,5-DICHLOROBENZOIC ACID

R.T.: 6.316 min
 Delta R.T.: -0.060 min
 Response: 6807441
 Conc: 3.15 ng/ml



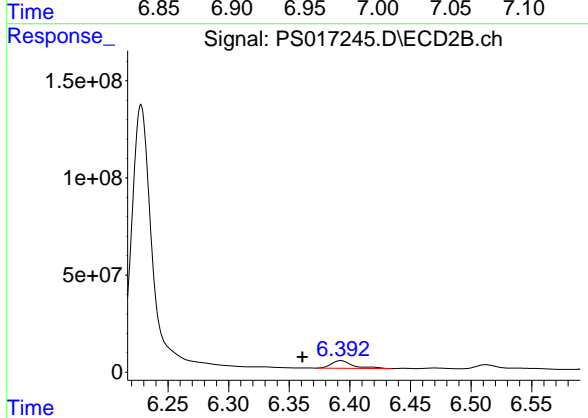
#2 3,5-DICHLOROBENZOIC ACID

R.T.: 5.960 min
 Delta R.T.: 0.026 min
 Response: 60693589
 Conc: 69.88 ng/ml

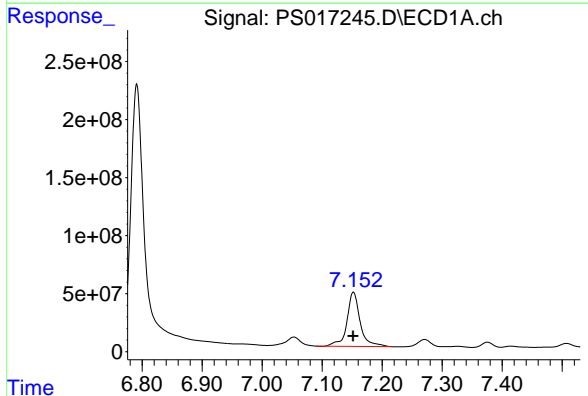


#3 4-Nitrophenol
 R.T.: 6.964 min
 Delta R.T.: -0.016 min
 Response: 54741700
 Conc: 62.77 ng/ml

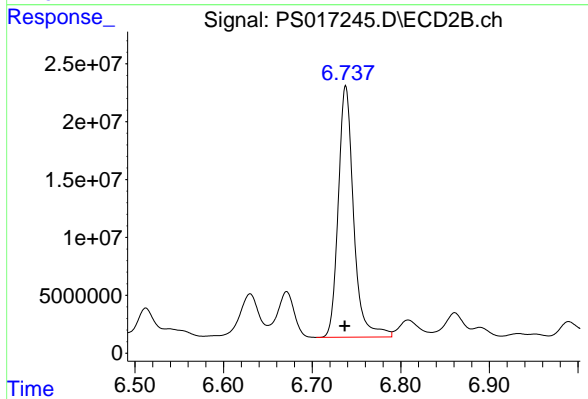
Instrument :
 ECD_S
 ClientSampled :



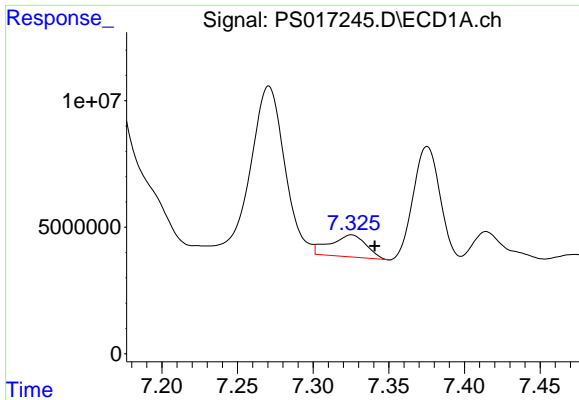
#3 4-Nitrophenol
 R.T.: 6.393 min
 Delta R.T.: 0.032 min
 Response: 48561305
 Conc: 150.65 ng/ml



#4 2,4-DCAA
 R.T.: 7.152 min
 Delta R.T.: 0.000 min
 Response: 715719184
 Conc: 468.26 ng/ml

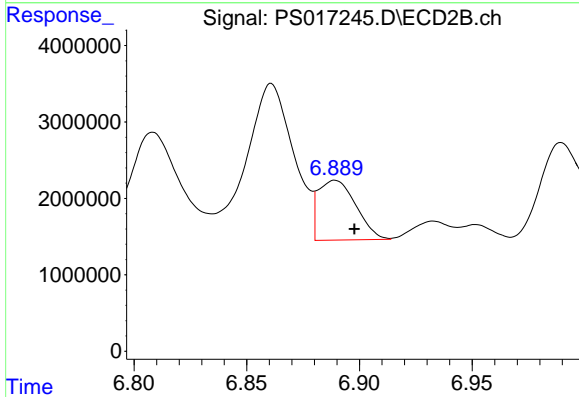


#4 2,4-DCAA
 R.T.: 6.738 min
 Delta R.T.: 0.001 min
 Response: 261598092
 Conc: 447.60 ng/ml

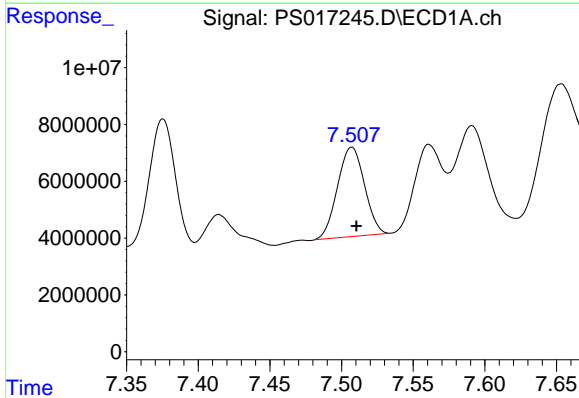


#5 DICAMBA
 R.T.: 7.325 min
 Delta R.T.: -0.015 min
 Response: 14300165
 Conc: 2.39 ng/ml

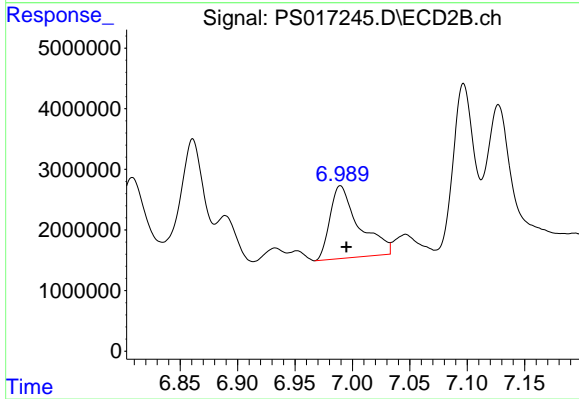
Instrument :
 ECD_S
 ClientSampleId :



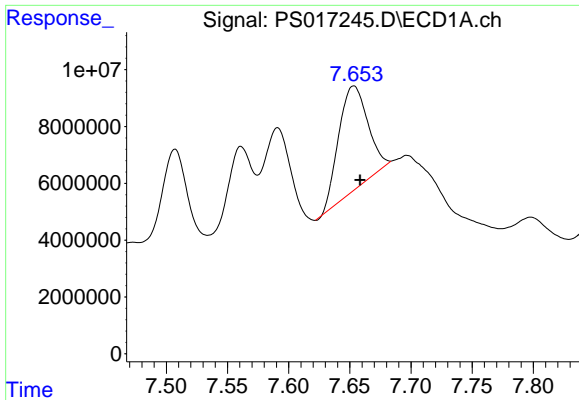
#5 DICAMBA
 R.T.: 6.889 min
 Delta R.T.: -0.009 min
 Response: 9095536
 Conc: 3.57 ng/ml



#6 MCP
 R.T.: 7.507 min
 Delta R.T.: -0.003 min
 Response: 41233015
 Conc: 9.22 ug/ml

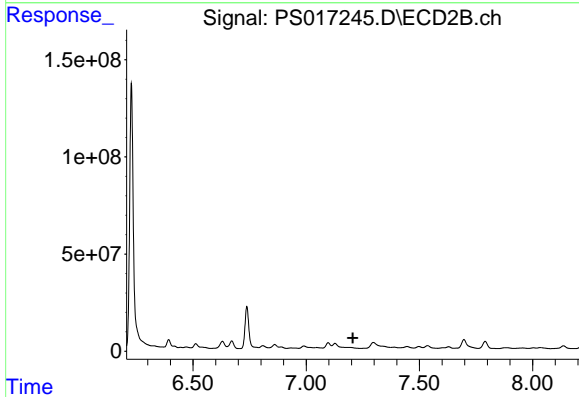


#6 MCP
 R.T.: 6.990 min
 Delta R.T.: -0.005 min
 Response: 21009400
 Conc: 10.43 ug/ml

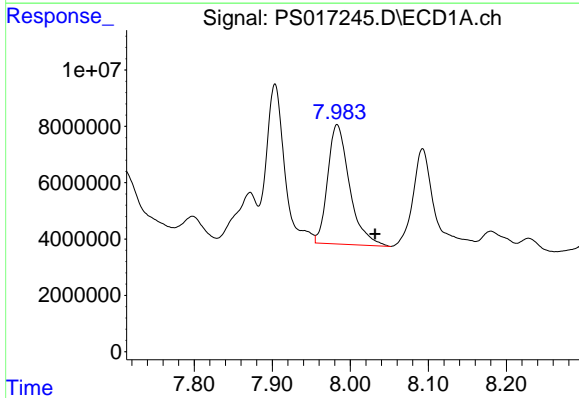


#7 MCPA
 R.T.: 7.653 min
 Delta R.T.: -0.005 min
 Response: 60595511
 Conc: 9.82 ug/ml

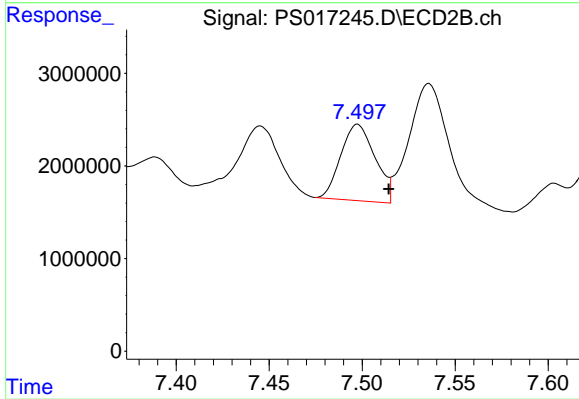
Instrument :
 ECD_S
 ClientSampleId :



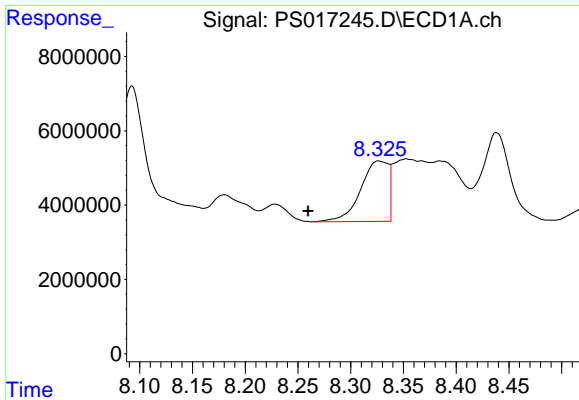
#7 MCPA
 R.T.: 0.000 min
 Exp R.T. : 7.206 min
 Response: 0
 Conc: N.D.



#8 DICHLORPROP
 R.T.: 7.983 min
 Delta R.T.: -0.049 min
 Response: 82497777
 Conc: 55.02 ng/ml

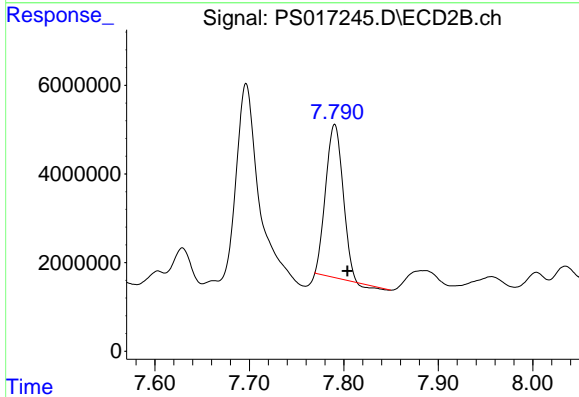


#8 DICHLORPROP
 R.T.: 7.498 min
 Delta R.T.: -0.017 min
 Response: 10589657
 Conc: 16.47 ng/ml

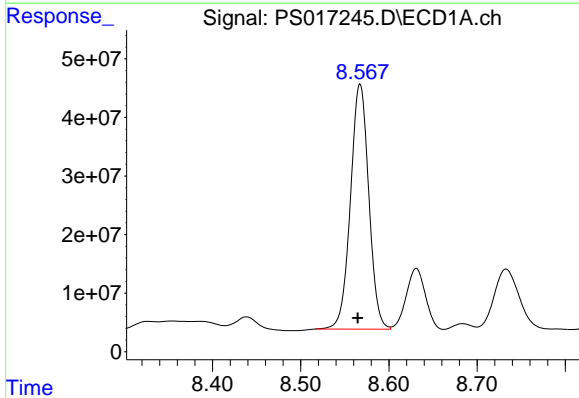


#9 2,4-D
 R.T.: 8.326 min
 Delta R.T.: 0.067 min
 Response: 29800433
 Conc: 16.82 ng/ml

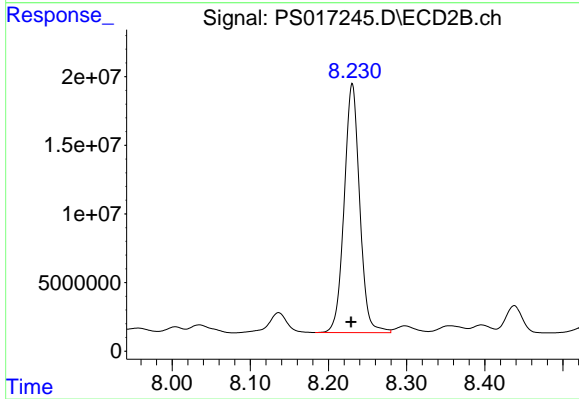
Instrument :
 ECD_S
 ClientSampleId :



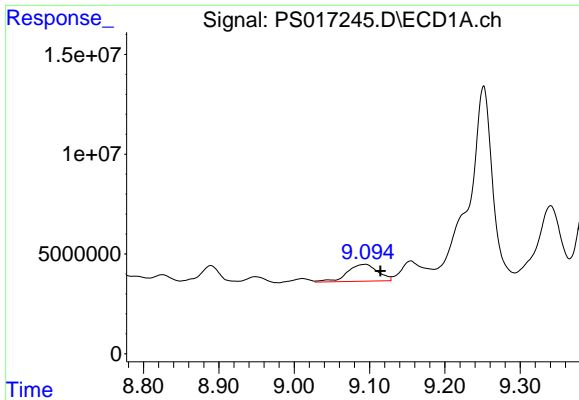
#9 2,4-D
 R.T.: 7.790 min
 Delta R.T.: -0.013 min
 Response: 43447185
 Conc: 57.73 ng/ml



#10 Pentachlorophenol
 R.T.: 8.567 min
 Delta R.T.: 0.002 min
 Response: 604285248
 Conc: 29.12 ng/ml

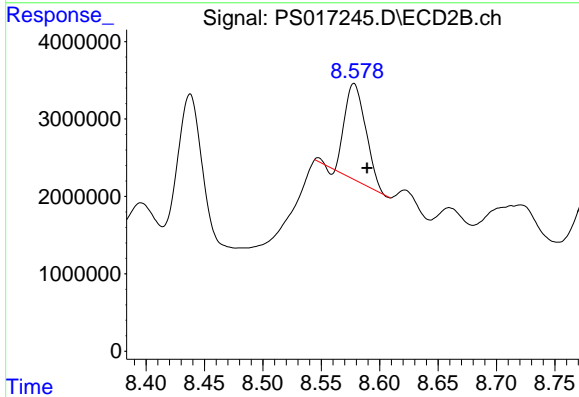


#10 Pentachlorophenol
 R.T.: 8.230 min
 Delta R.T.: 0.002 min
 Response: 249854807
 Conc: 30.60 ng/ml

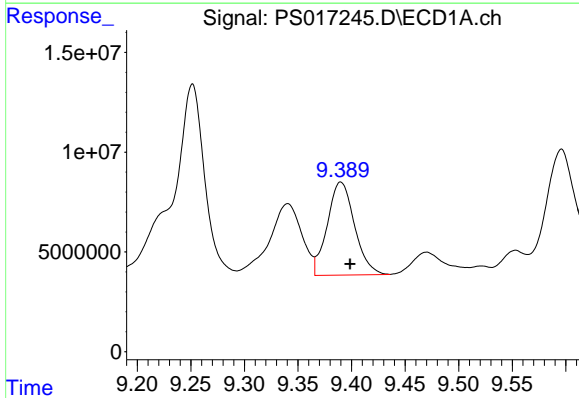


#11 2,4,5-TP (SILVEX)
 R.T.: 9.094 min
 Delta R.T.: -0.020 min
 Response: 23881998
 Conc: 2.94 ng/ml

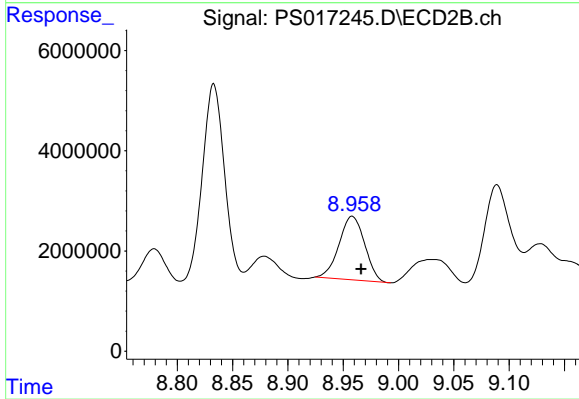
Instrument :
 ECD_S
 ClientSampleId :



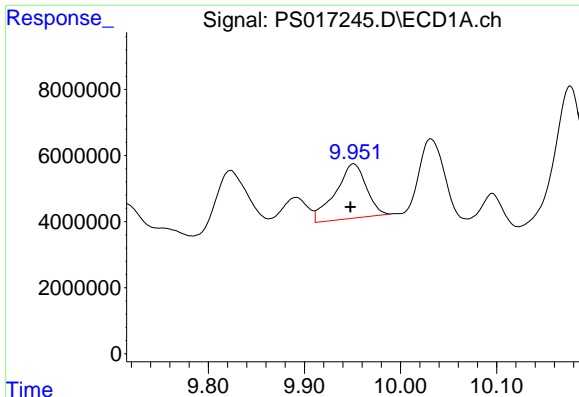
#11 2,4,5-TP (SILVEX)
 R.T.: 8.578 min
 Delta R.T.: -0.011 min
 Response: 15622906
 Conc: 4.53 ng/ml



#12 2,4,5-T
 R.T.: 9.390 min
 Delta R.T.: -0.009 min
 Response: 82406689
 Conc: 10.26 ng/ml



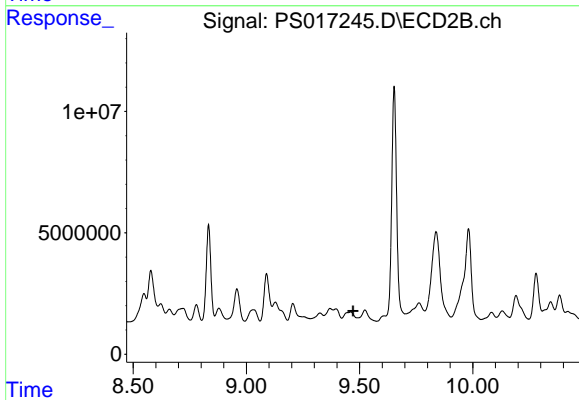
#12 2,4,5-T
 R.T.: 8.958 min
 Delta R.T.: -0.008 min
 Response: 20494403
 Conc: 6.47 ng/ml



#13 2,4-DB

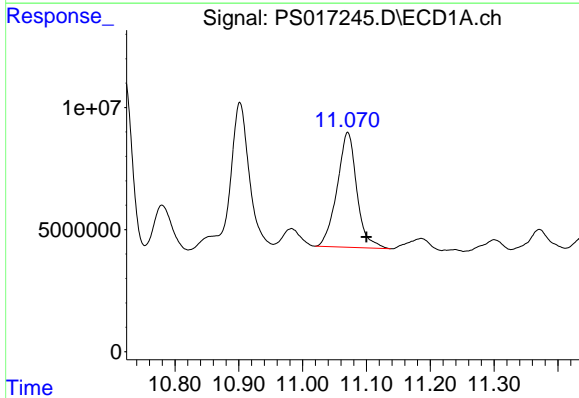
R.T.: 9.951 min
 Delta R.T.: 0.003 min
 Response: 36680202
 Conc: 24.38 ng/ml

Instrument :
 ECD_S
 ClientSampled :



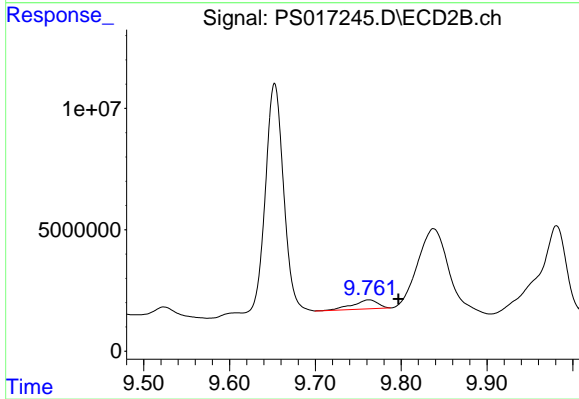
#13 2,4-DB

R.T.: 0.000 min
 Exp R.T. : 9.471 min
 Response: 0
 Conc: N.D.



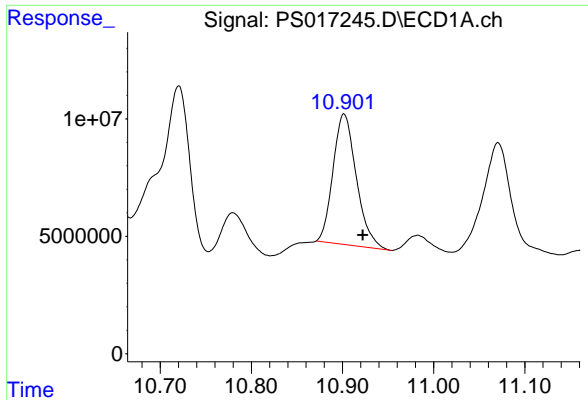
#14 DINOSEB

R.T.: 11.071 min
 Delta R.T.: -0.029 min
 Response: 101158881
 Conc: 17.86 ng/ml



#14 DINOSEB

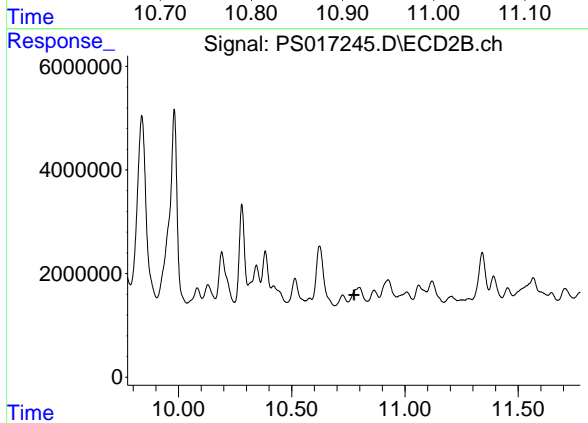
R.T.: 9.762 min
 Delta R.T.: -0.035 min
 Response: 7633642
 Conc: 3.46 ng/ml



#15 Picloram

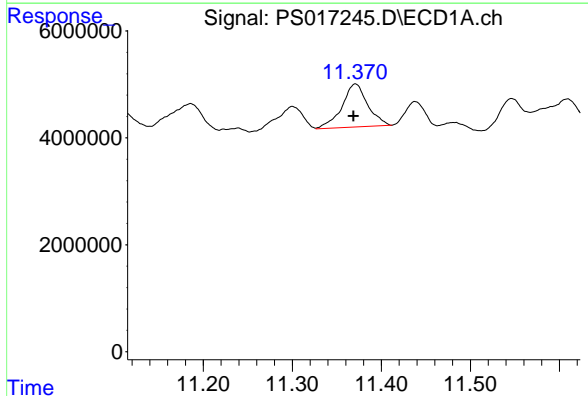
R.T.: 10.902 min
 Delta R.T.: -0.020 min
 Response: 98946873
 Conc: 9.26 ng/ml

Instrument :
 ECD_S
 ClientSampled :



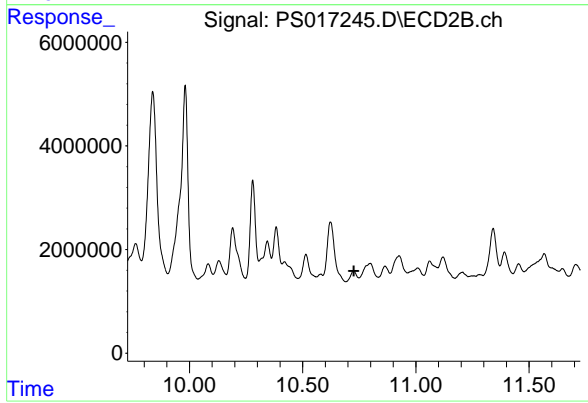
#15 Picloram

R.T.: 0.000 min
 Exp R.T. : 10.775 min
 Response: 0
 Conc: N.D.



#16 DCPA

R.T.: 11.371 min
 Delta R.T.: 0.002 min
 Response: 16141307
 Conc: 1.58 ng/ml



#16 DCPA

R.T.: 0.000 min
 Exp R.T. : 10.727 min
 Response: 0
 Conc: N.D.