

Data Path : Z:\pestpcbsrv\HPCHEM1\ECD_S\Data\PS102819\
 Data File : PS007391.D
 Signal(s) : Signal #1: ECD1A.ch Signal #2: ECD2B.ch
 Acq On : 28 Oct 2019 11:43
 Operator : SM\AJ
 Sample : PB124307TB
 Misc :
 ALS Vial : 9 Sample Multiplier: 1

Instrument :
 ECD_S
 ClientSampleId :

Integration File signal 1: autoint1.e
 Integration File signal 2: autoint2.e
 Quant Time: Oct 28 13:02:24 2019
 Quant Method : Z:\pestpcbsrv\HPCHEM1\ECD_S\Method\PS101419.M
 Quant Title : 8080.M
 QLast Update : Mon Oct 14 13:54:23 2019
 Response via : Initial Calibration
 Integrator: ChemStation

Volume Inj. : 2 µl
 Signal #1 Phase : Rtx-CLPesticides Signal #2 Phase: Rtx-CLPesticides2
 Signal #1 Info : 30M x 0.32mm x0.5 Signal #2 Info : 30M x 0.32mm x 0.25µm

	Compound	RT#1	RT#2	Resp#1	Resp#2	ng/ml	ng/ml

System Monitoring Compounds							
4) S	2,4-DCAA	5.435	5.161	765.0E6	430.8E6	558.924	612.551
Target Compounds							
1) T	Dalapon	1.993	1.702	37406860	24620179	22.355	27.055
2) T	3,5-DICHL...	0.000	4.495	0	42352988	N.D.	49.223
5) T	DICAMBA	5.528	5.287	61483807	10087727	12.513	3.877 #
9) T	2,4-D	6.487	0.000	86430062	0	70.135	N.D. #
10) T	Pentachlo...	0.000	6.448	0	14849902	N.D.	1.544
11) T	2,4,5-TP ...	0.000	6.759	0	22131304	N.D.	5.818
12) T	2,4,5-T	0.000	7.220	0	38815894	N.D.	11.079
15) T	Picloram	0.000	8.912	0	36900742	N.D.	6.010
16) T	DCPA	0.000	8.912	0	36900742	N.D.	7.359

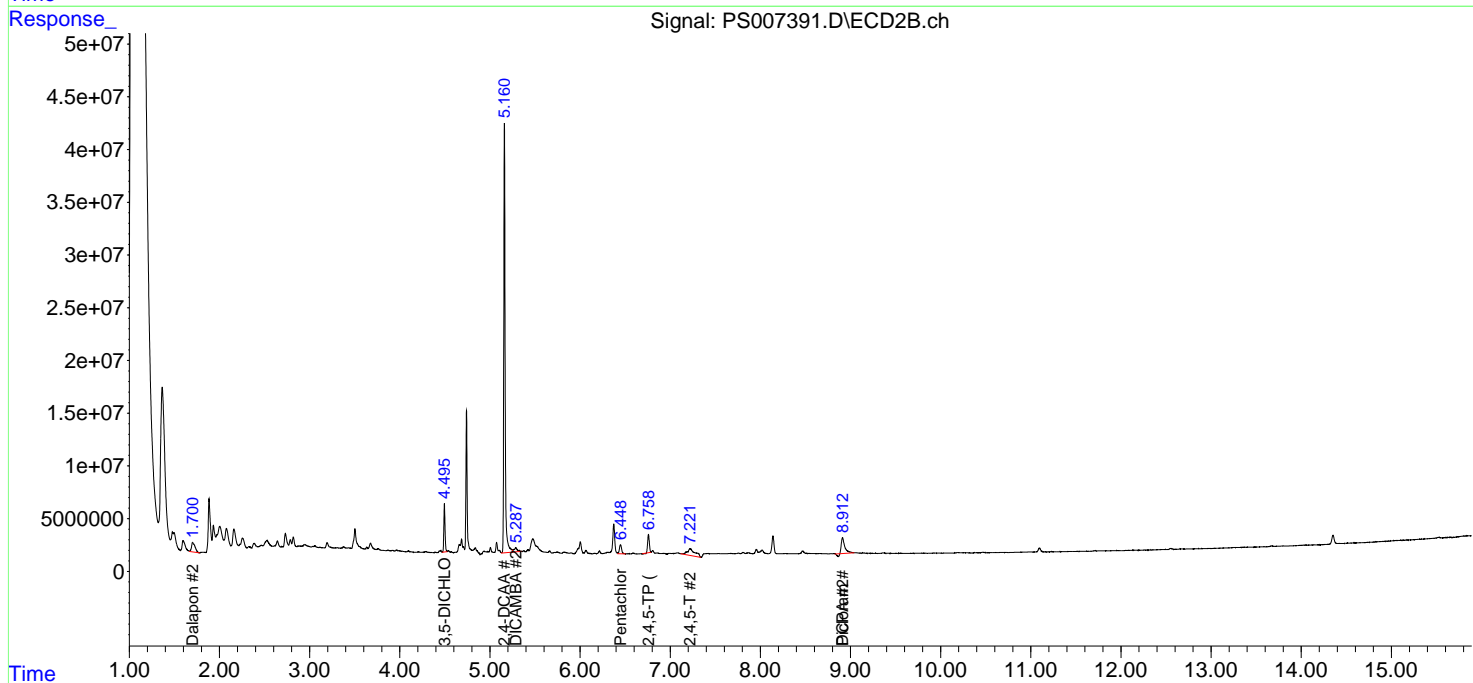
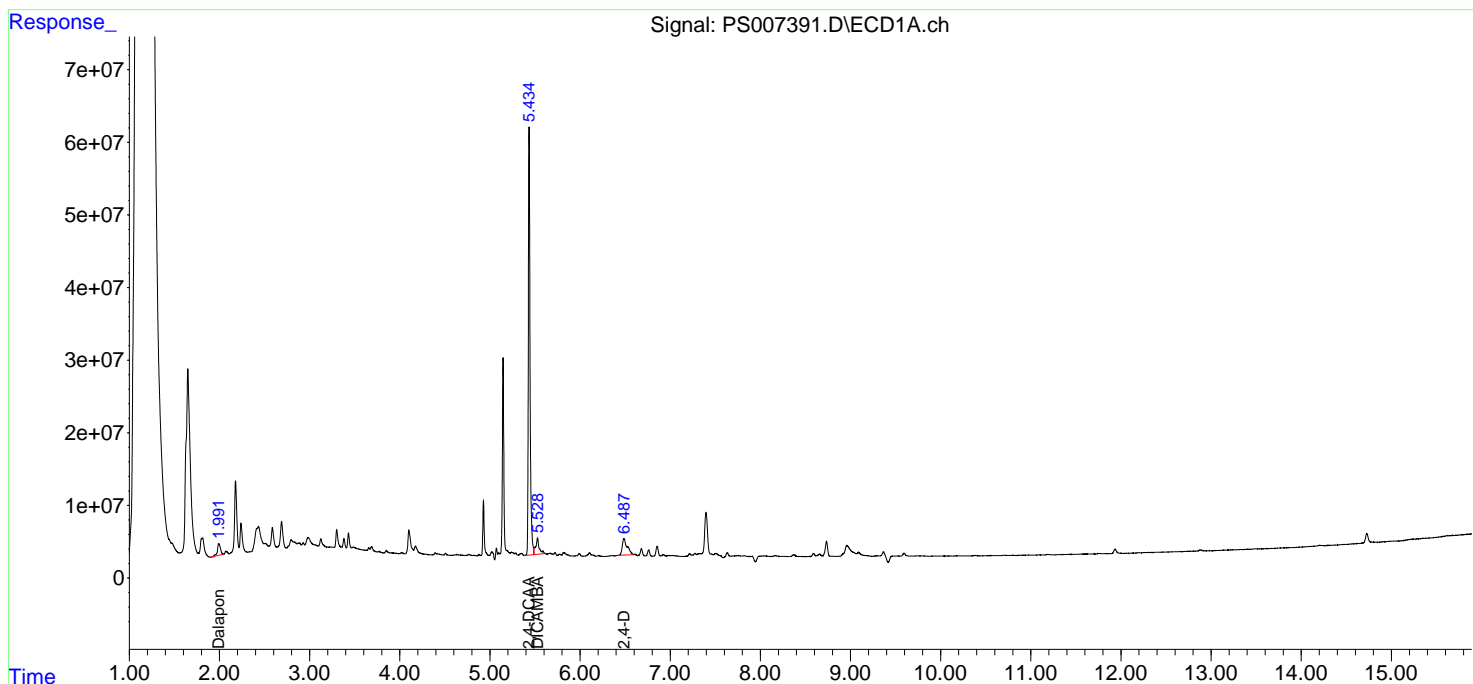
(f)=RT Delta > 1/2 Window (#)=Amounts differ by > 25% (m)=manual int.

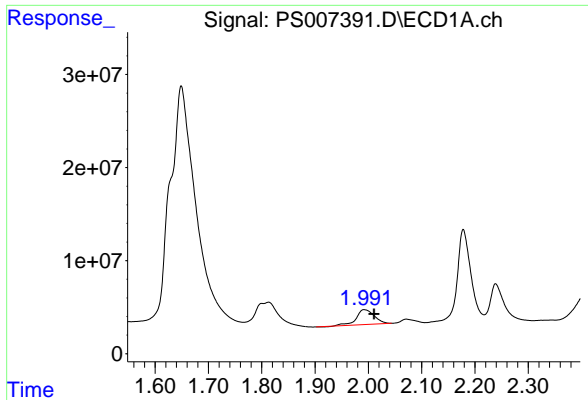
Data Path : Z:\pestpcbsrv\HPCHEM1\ECD_S\Data\PS102819\
 Data File : PS007391.D
 Signal(s) : Signal #1: ECD1A.ch Signal #2: ECD2B.ch
 Acq On : 28 Oct 2019 11:43
 Operator : SM\AJ
 Sample : PB124307TB
 Misc :
 ALS Vial : 9 Sample Multiplier: 1

Instrument :
 ECD_S
 ClientSampled :

Integration File signal 1: autoint1.e
 Integration File signal 2: autoint2.e
 Quant Time: Oct 28 13:02:24 2019
 Quant Method : Z:\pestpcbsrv\HPCHEM1\ECD_S\Method\PS101419.M
 Quant Title : 8080.M
 QLast Update : Mon Oct 14 13:54:23 2019
 Response via : Initial Calibration
 Integrator: ChemStation

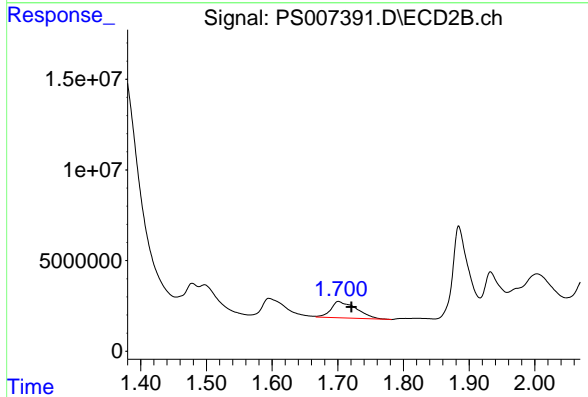
Volume Inj. : 2 µl
 Signal #1 Phase : Rtx-CLPesticides Signal #2 Phase: Rtx-CLPesticides2
 Signal #1 Info : 30M x 0.32mm x0.5 Signal #2 Info : 30M x 0.32mm x 0.25µm



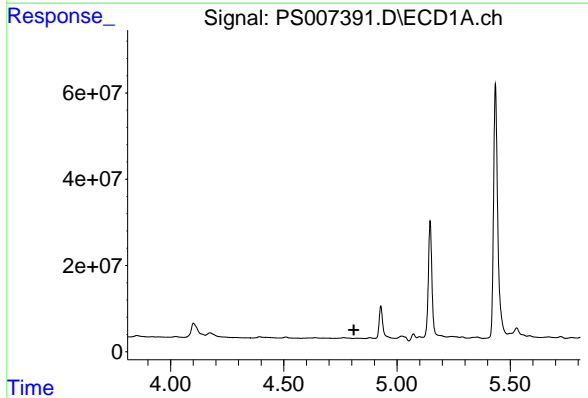


#1 Dalapon
 R.T.: 1.993 min
 Delta R.T.: -0.018 min
 Response: 37406860
 Conc: 22.36 ng/ml

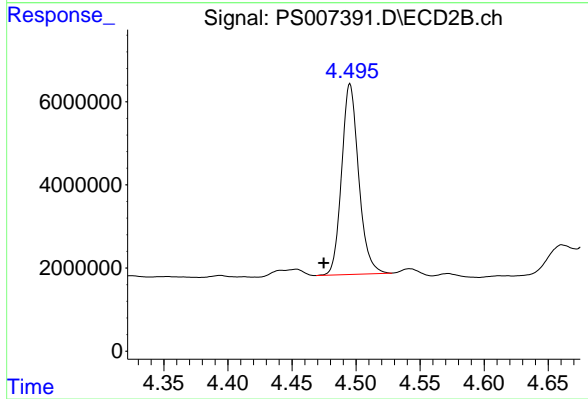
Instrument :
 ECD_S
 ClientSampled :



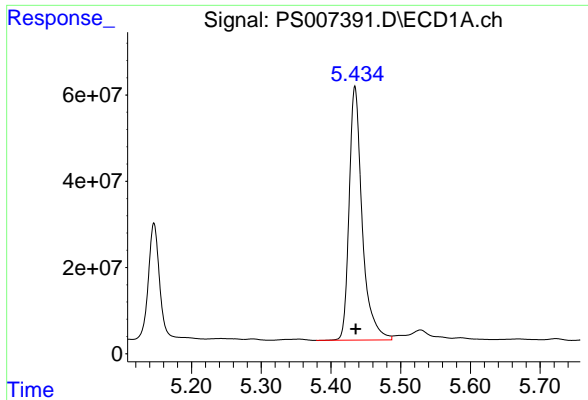
#1 Dalapon
 R.T.: 1.702 min
 Delta R.T.: -0.019 min
 Response: 24620179
 Conc: 27.06 ng/ml



#2 3,5-DICHLOROBENZOIC ACID
 R.T.: 0.000 min
 Exp R.T. : 4.810 min
 Response: 0
 Conc: N.D.



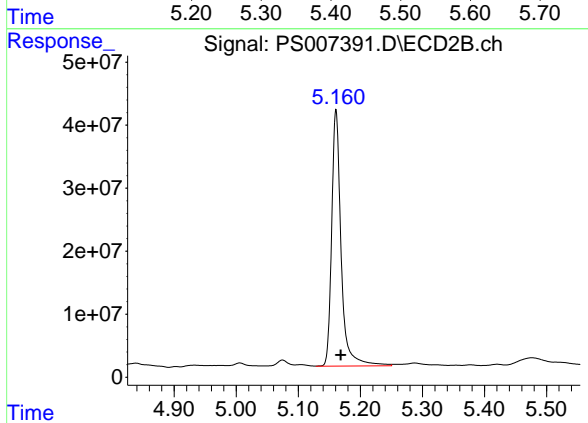
#2 3,5-DICHLOROBENZOIC ACID
 R.T.: 4.495 min
 Delta R.T.: 0.021 min
 Response: 42352988
 Conc: 49.22 ng/ml



#4 2,4-DCAA

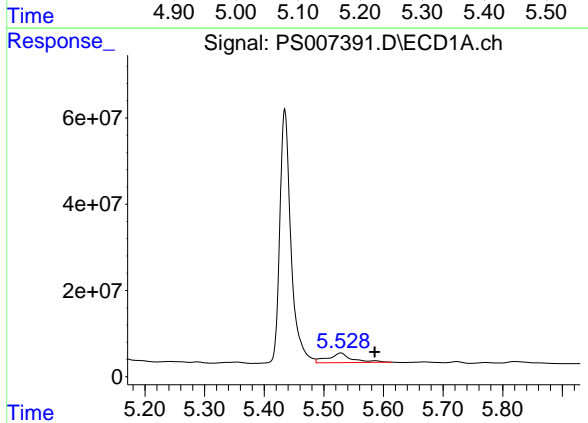
R.T.: 5.435 min
Delta R.T.: -0.001 min
Response: 764981589
Conc: 558.92 ng/ml

Instrument :
ECD_S
ClientSampleId :



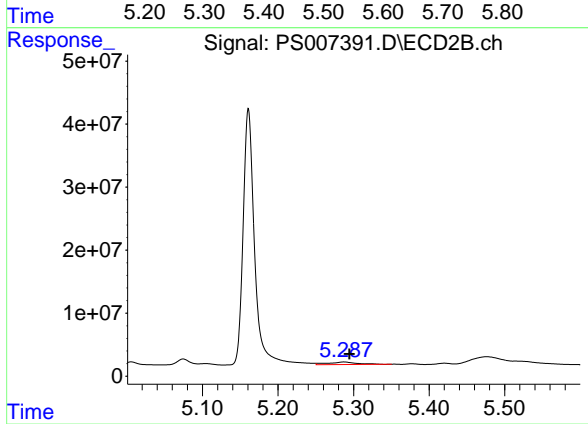
#4 2,4-DCAA

R.T.: 5.161 min
Delta R.T.: -0.008 min
Response: 430810910
Conc: 612.55 ng/ml



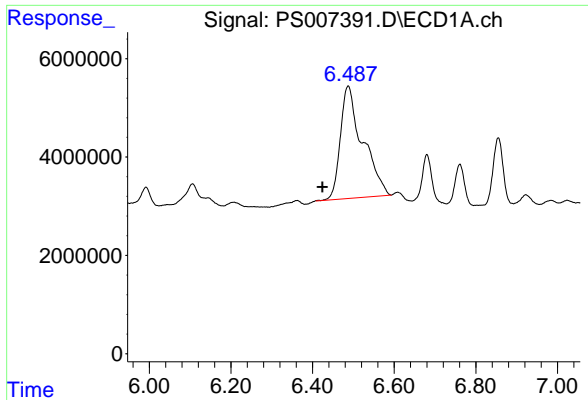
#5 DICAMBA

R.T.: 5.528 min
Delta R.T.: -0.057 min
Response: 61483807
Conc: 12.51 ng/ml



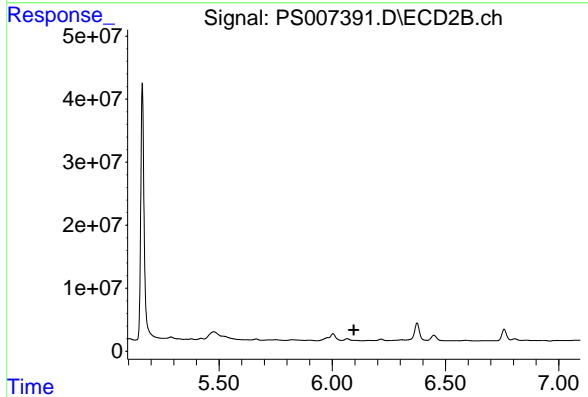
#5 DICAMBA

R.T.: 5.287 min
Delta R.T.: -0.007 min
Response: 10087727
Conc: 3.88 ng/ml

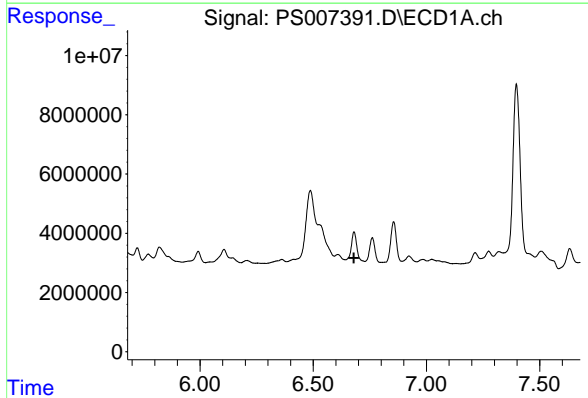


#9 2,4-D
 R.T.: 6.487 min
 Delta R.T.: 0.063 min
 Response: 86430062
 Conc: 70.13 ng/ml

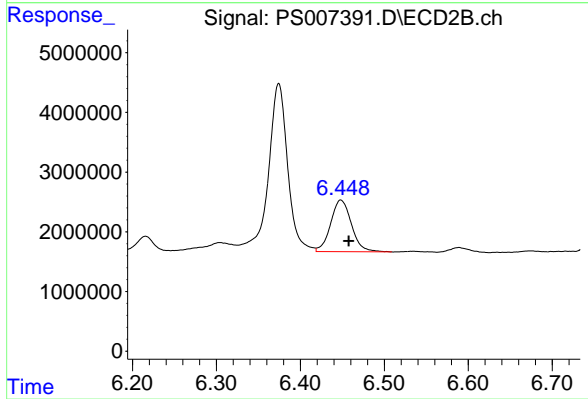
Instrument :
 ECD_S
 ClientSampled :



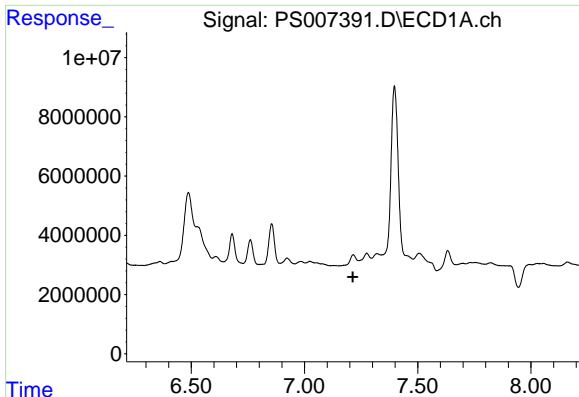
#9 2,4-D
 R.T.: 0.000 min
 Exp R.T. : 6.095 min
 Response: 0
 Conc: N.D.



#10 Pentachlorophenol
 R.T.: 0.000 min
 Exp R.T. : 6.680 min
 Response: 0
 Conc: N.D.



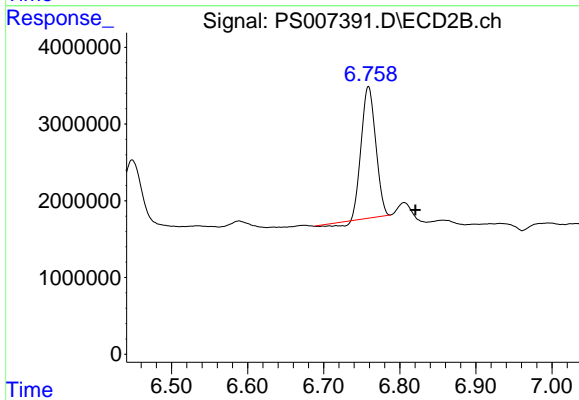
#10 Pentachlorophenol
 R.T.: 6.448 min
 Delta R.T.: -0.009 min
 Response: 14849902
 Conc: 1.54 ng/ml



#11 2,4,5-TP (SILVEX)

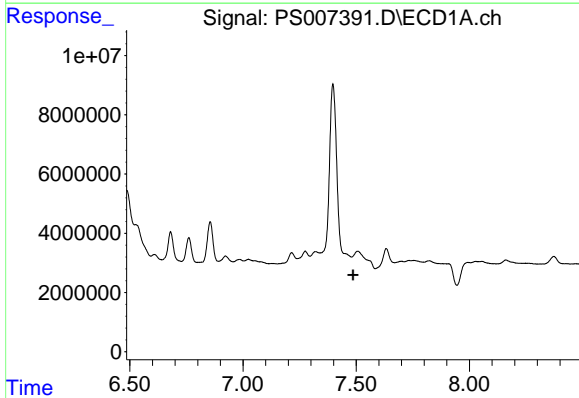
R.T.: 0.000 min
 Exp R.T. : 7.214 min
 Response: 0
 Conc: N.D.

Instrument :
 ECD_S
 ClientSampled :



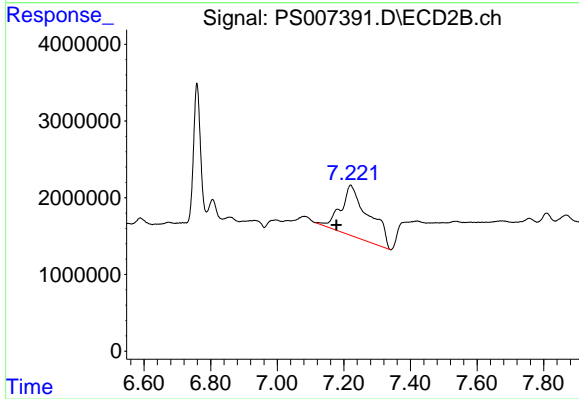
#11 2,4,5-TP (SILVEX)

R.T.: 6.759 min
 Delta R.T.: -0.062 min
 Response: 22131304
 Conc: 5.82 ng/ml



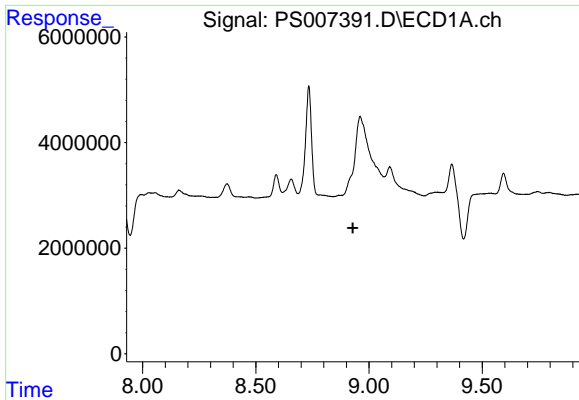
#12 2,4,5-T

R.T.: 0.000 min
 Exp R.T. : 7.486 min
 Response: 0
 Conc: N.D.



#12 2,4,5-T

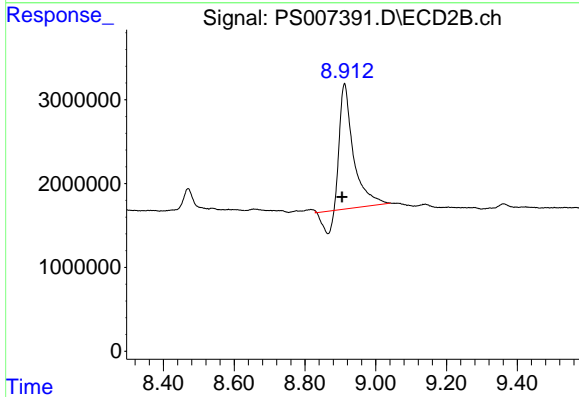
R.T.: 7.220 min
 Delta R.T.: 0.042 min
 Response: 38815894
 Conc: 11.08 ng/ml



#15 Picloram

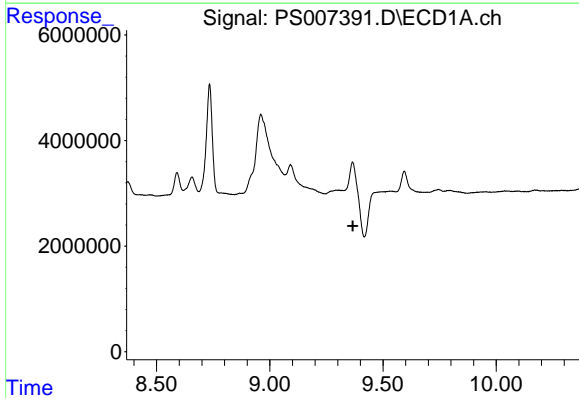
R.T.: 0.000 min
 Exp R.T. : 8.929 min
 Response: 0
 Conc: N.D.

Instrument :
 ECD_S
 ClientSampled :



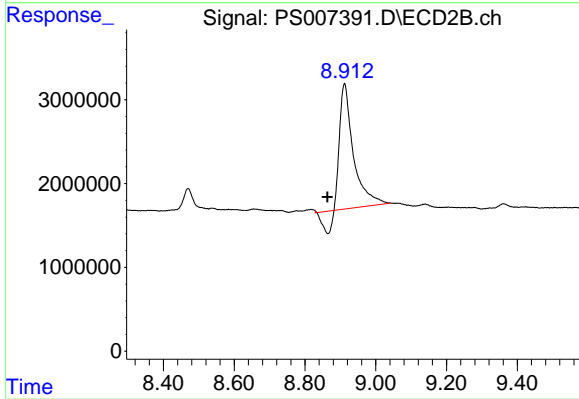
#15 Picloram

R.T.: 8.912 min
 Delta R.T.: 0.007 min
 Response: 36900742
 Conc: 6.01 ng/ml



#16 DCPA

R.T.: 0.000 min
 Exp R.T. : 9.367 min
 Response: 0
 Conc: N.D.



#16 DCPA

R.T.: 8.912 min
 Delta R.T.: 0.048 min
 Response: 36900742
 Conc: 7.36 ng/ml