

Data Path : Z:\pestpcbsrv\HPCHEM1\ECD_S\Data\PS102819\
 Data File : PS007407.D
 Signal(s) : Signal #1: ECD1A.ch Signal #2: ECD2B.ch
 Acq On : 28 Oct 2019 18:19
 Operator : SM\AJ
 Sample : K5502-13
 Misc :
 ALS Vial : 23 Sample Multiplier: 1

Instrument :
 ECD_S
 ClientSampleId :

Integration File signal 1: autoint1.e
 Integration File signal 2: autoint2.e
 Quant Time: Oct 29 08:48:00 2019
 Quant Method : Z:\pestpcbsrv\HPCHEM1\ECD_S\Method\PS101419.M
 Quant Title : 8080.M
 QLast Update : Mon Oct 14 13:54:23 2019
 Response via : Initial Calibration
 Integrator: ChemStation

Volume Inj. : 2 µl
 Signal #1 Phase : Rtx-CLPesticides Signal #2 Phase: Rtx-CLPesticides2
 Signal #1 Info : 30M x 0.32mm x0.5 Signal #2 Info : 30M x 0.32mm x 0.25µm

	Compound	RT#1	RT#2	Resp#1	Resp#2	ng/ml	ng/ml

System Monitoring Compounds							
4) S	2,4-DCAA	5.450	5.178	302.5E6	154.5E6	221.025	219.685
Target Compounds							
1) T	Dalapon	2.008	1.677	77741335	952.4E6	46.460	1046.553 #
2) T	3,5-DICHL...	0.000	4.497	0	104.3E6	N.D.	121.230
3) T	4-Nitroph...	5.312	4.852	71229303	15595038	118.622	39.492 #
5) T	DICAMBA	5.613	5.312	36330247	14665330	7.394	5.636
6) T	MCP P	0.000	5.312	0	14665330	N.D.	7.732
7) T	MCPA	5.852	5.547	163.1E6	31041169	31.613	10.678 #
8) T	DICHLORPROP	0.000	5.835	0	19440869	N.D.	29.853
9) T	2,4-D	0.000	6.084	0	23309267	N.D.	29.217
10) T	Pentachlo...	0.000	6.515	0	73052094	N.D.	7.597
11) T	2,4,5-TP ...	7.202	6.775	53892641	37803429	7.732	9.939 #
12) T	2,4,5-T	7.545	0.000	58904332	0	7.705	N.D. #
13) T	2,4-DB	8.056	7.669	105.9E6	74587299	111.032	159.138 #
14) T	DINOSEB	0.000	7.971	0	74431438	N.D.	26.513
15) T	Picloram	0.000	8.957	0	28383450	N.D.	4.623
16) T	DCPA	0.000	8.824	0	36695553	N.D.	7.318

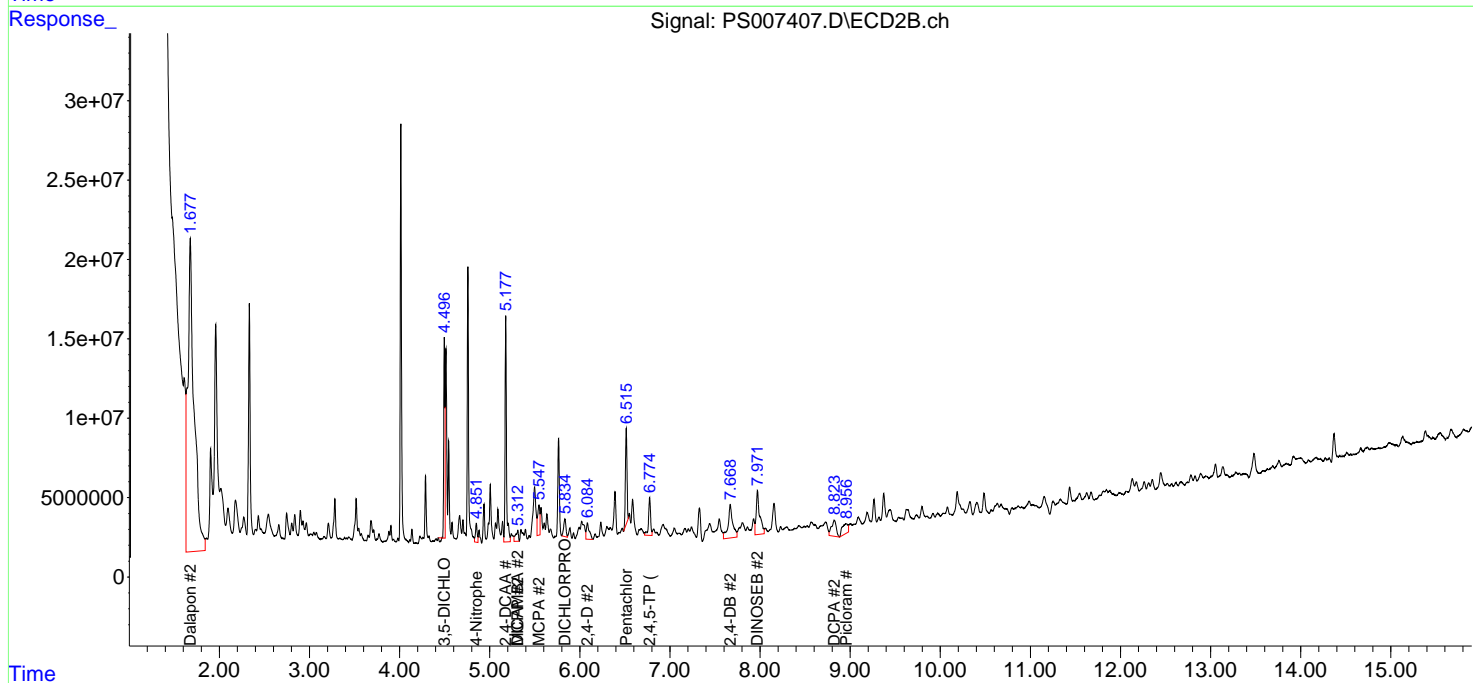
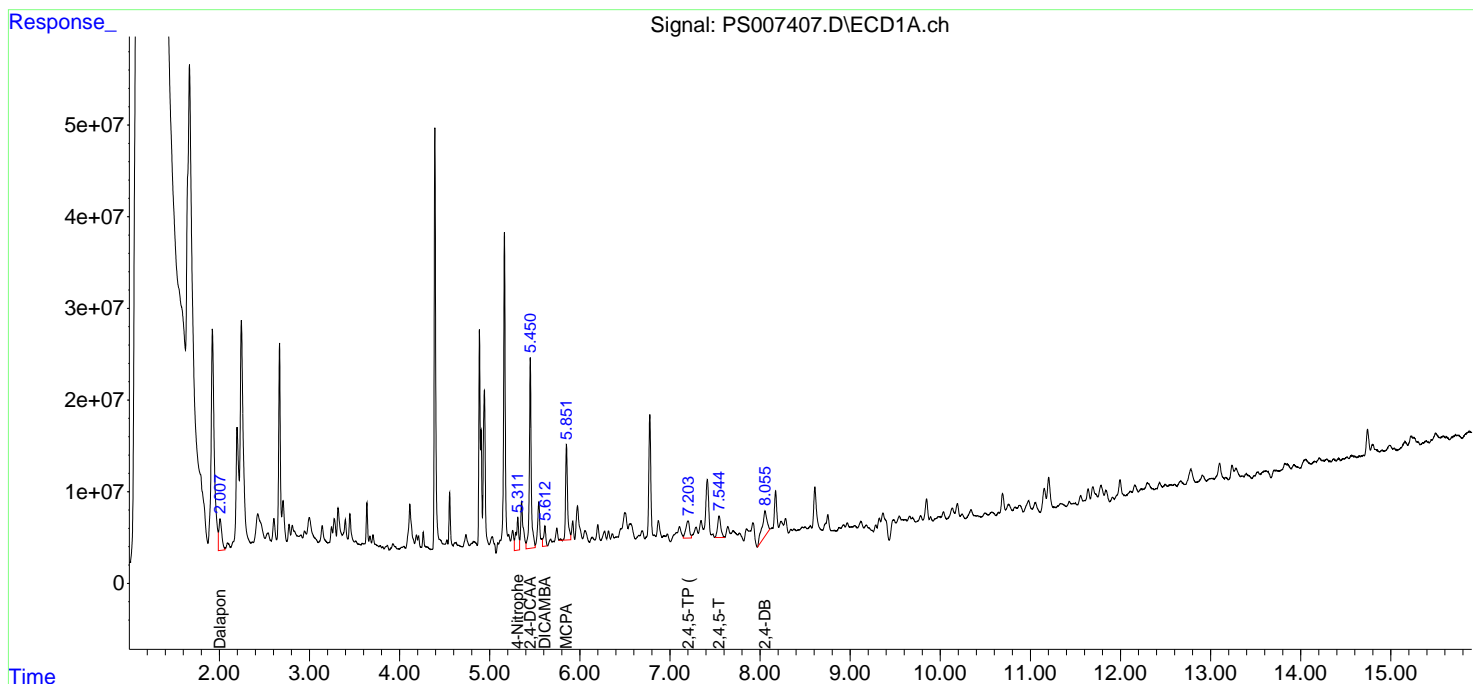
(f)=RT Delta > 1/2 Window (#)=Amounts differ by > 25% (m)=manual int.

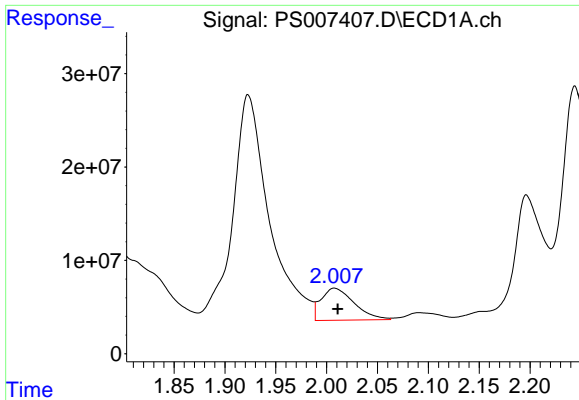
Data Path : Z:\pestpcbsrv\HPCHEM1\ECD_S\Data\PS102819\
 Data File : PS007407.D
 Signal(s) : Signal #1: ECD1A.ch Signal #2: ECD2B.ch
 Acq On : 28 Oct 2019 18:19
 Operator : SM\AJ
 Sample : K5502-13
 Misc :
 ALS Vial : 23 Sample Multiplier: 1

Instrument :
 ECD_S
 ClientSampled :

Integration File signal 1: autoint1.e
 Integration File signal 2: autoint2.e
 Quant Time: Oct 29 08:48:00 2019
 Quant Method : Z:\pestpcbsrv\HPCHEM1\ECD_S\Method\PS101419.M
 Quant Title : 8080.M
 QLast Update : Mon Oct 14 13:54:23 2019
 Response via : Initial Calibration
 Integrator: ChemStation

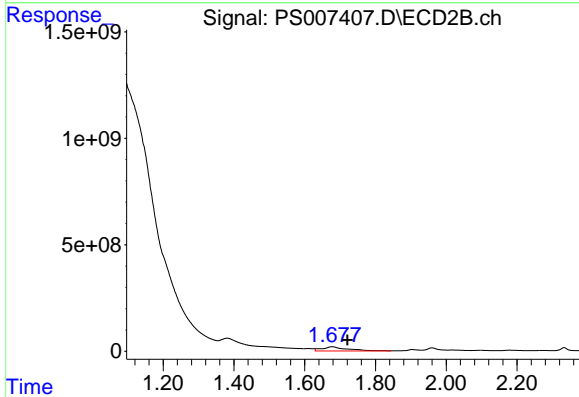
Volume Inj. : 2 µl
 Signal #1 Phase : Rtx-CLPesticides Signal #2 Phase: Rtx-CLPesticides2
 Signal #1 Info : 30M x 0.32mm x 0.5 Signal #2 Info : 30M x 0.32mm x 0.25µm



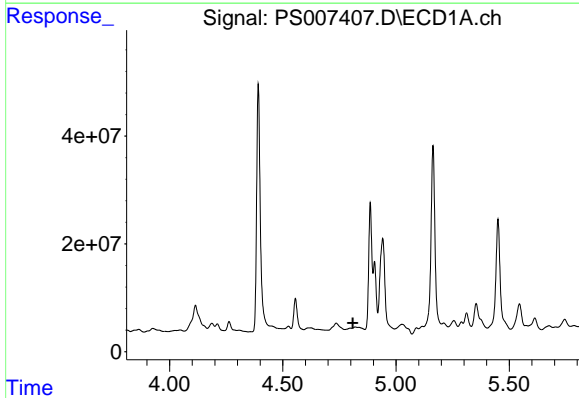


#1 Dalapon
 R.T.: 2.008 min
 Delta R.T.: -0.003 min
 Response: 77741335
 Conc: 46.46 ng/ml

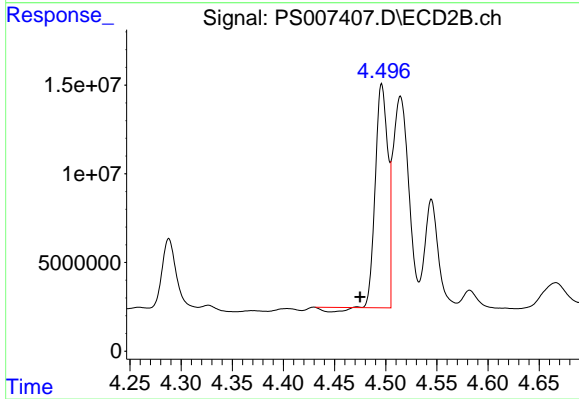
Instrument :
 ECD_S
 ClientSampled :



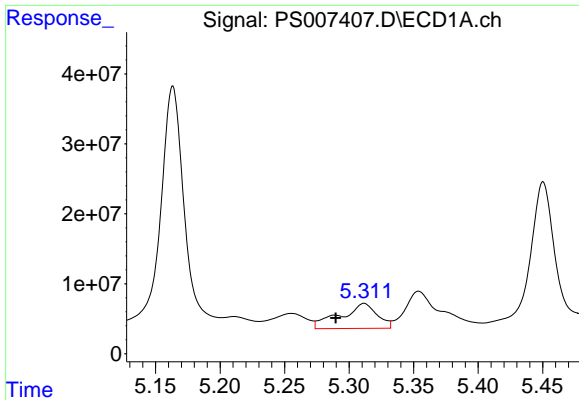
#1 Dalapon
 R.T.: 1.677 min
 Delta R.T.: -0.043 min
 Response: 952366939
 Conc: 1046.55 ng/ml



#2 3,5-DICHLOROBENZOIC ACID
 R.T.: 0.000 min
 Exp R.T. : 4.810 min
 Response: 0
 Conc: N.D.



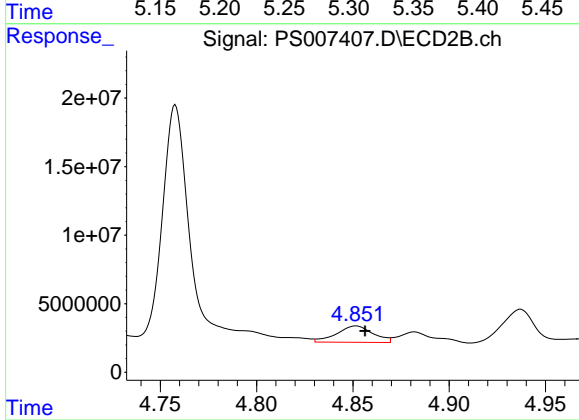
#2 3,5-DICHLOROBENZOIC ACID
 R.T.: 4.497 min
 Delta R.T.: 0.022 min
 Response: 104309804
 Conc: 121.23 ng/ml



#3 4-Nitrophenol

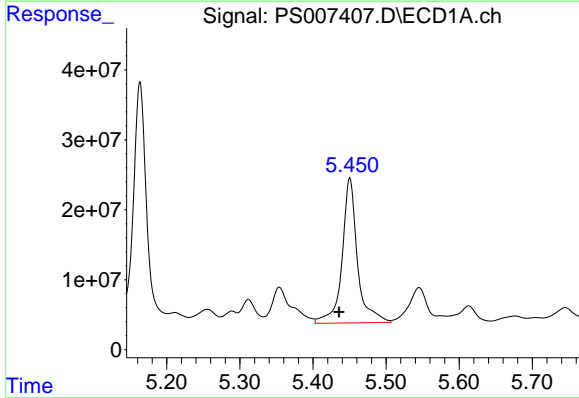
R.T.: 5.312 min
Delta R.T.: 0.022 min
Response: 71229303
Conc: 118.62 ng/ml

Instrument :
ECD_S
ClientSampleId :



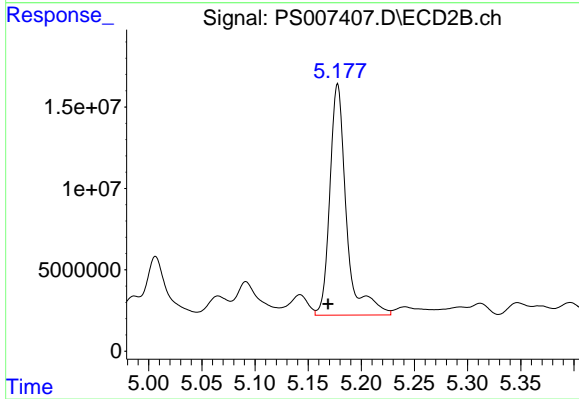
#3 4-Nitrophenol

R.T.: 4.852 min
Delta R.T.: -0.005 min
Response: 15595038
Conc: 39.49 ng/ml



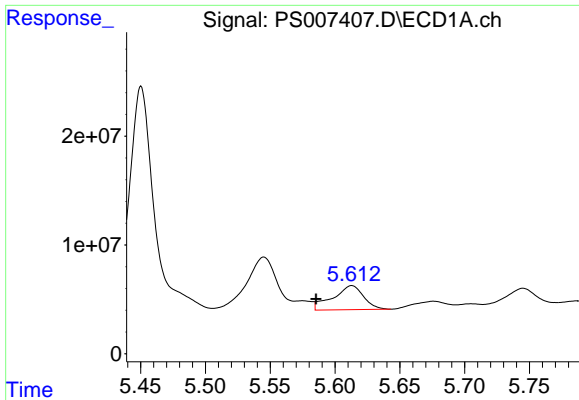
#4 2,4-DCAA

R.T.: 5.450 min
Delta R.T.: 0.015 min
Response: 302509454
Conc: 221.02 ng/ml



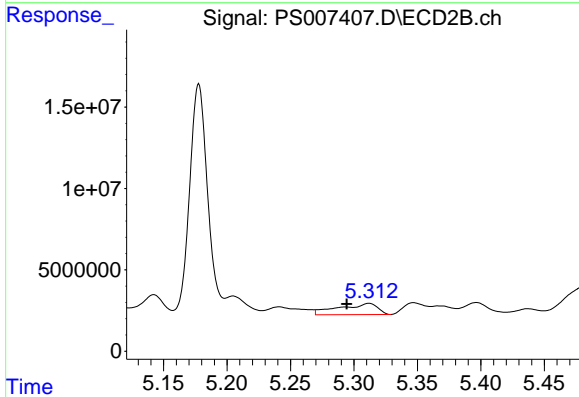
#4 2,4-DCAA

R.T.: 5.178 min
Delta R.T.: 0.009 min
Response: 154505660
Conc: 219.68 ng/ml

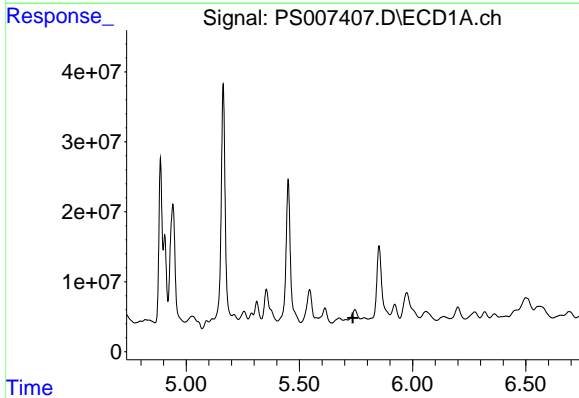


#5 DICAMBA
 R.T.: 5.613 min
 Delta R.T.: 0.028 min
 Response: 36330247
 Conc: 7.39 ng/ml

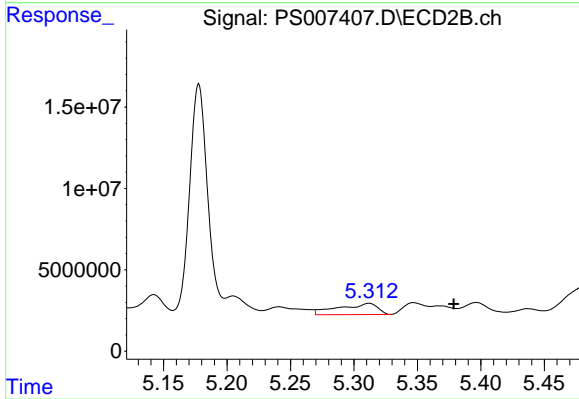
Instrument :
 ECD_S
 ClientSampled :



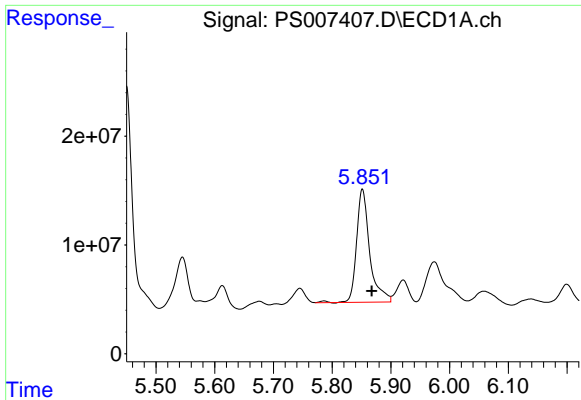
#5 DICAMBA
 R.T.: 5.312 min
 Delta R.T.: 0.017 min
 Response: 14665330
 Conc: 5.64 ng/ml



#6 MCPP
 R.T.: 0.000 min
 Exp R.T. : 5.736 min
 Response: 0
 Conc: N.D.

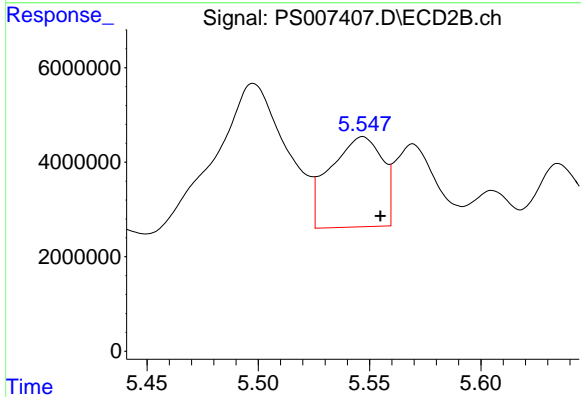


#6 MCPP
 R.T.: 5.312 min
 Delta R.T.: -0.067 min
 Response: 14665330
 Conc: 7.73 ug/ml

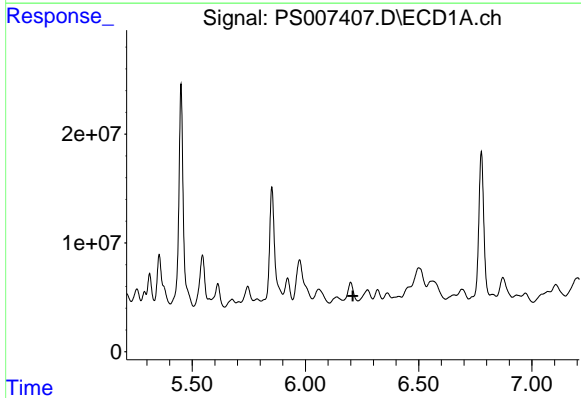


#7 MCPA
 R.T.: 5.852 min
 Delta R.T.: -0.016 min
 Response: 163053683
 Conc: 31.61 ug/ml

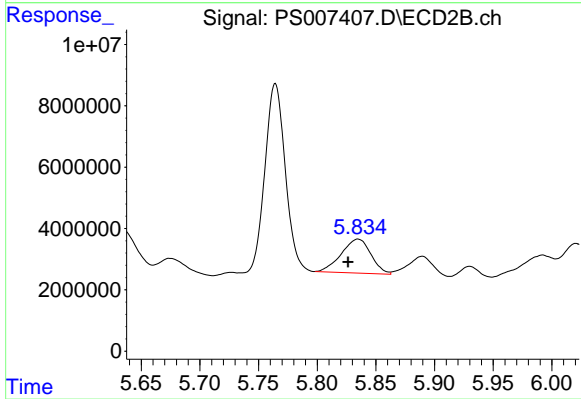
Instrument :
 ECD_S
 ClientSampled :



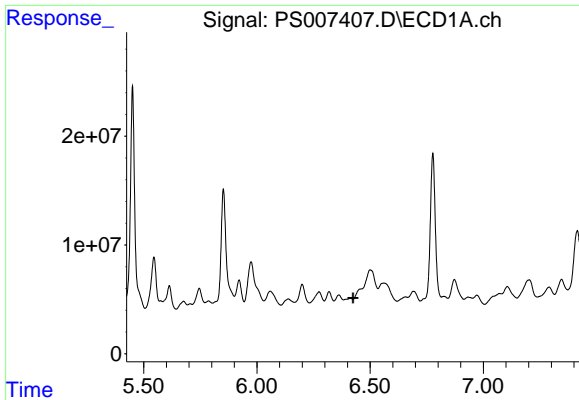
#7 MCPA
 R.T.: 5.547 min
 Delta R.T.: -0.008 min
 Response: 31041169
 Conc: 10.68 ug/ml



#8 DICHLORPROP
 R.T.: 0.000 min
 Exp R.T. : 6.209 min
 Response: 0
 Conc: N.D.



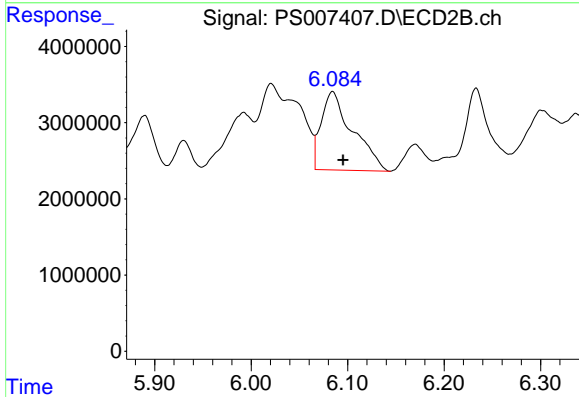
#8 DICHLORPROP
 R.T.: 5.835 min
 Delta R.T.: 0.008 min
 Response: 19440869
 Conc: 29.85 ng/ml



#9 2,4-D

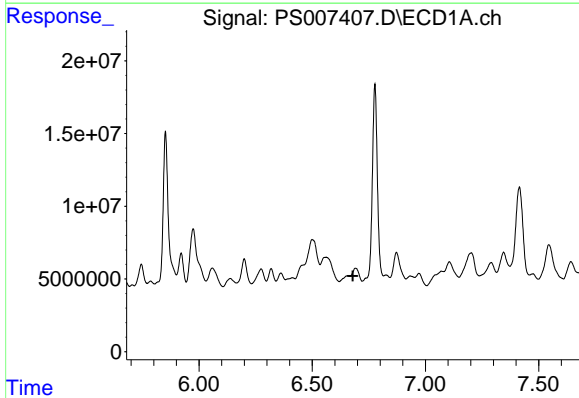
R.T.: 0.000 min
 Exp R.T.: 6.424 min
 Response: 0
 Conc: N.D.

Instrument :
 ECD_S
 ClientSampled :



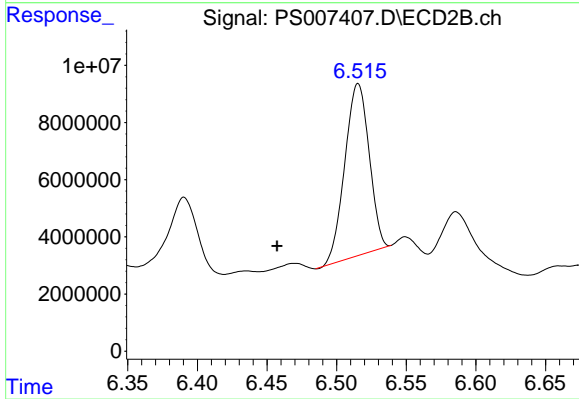
#9 2,4-D

R.T.: 6.084 min
 Delta R.T.: -0.011 min
 Response: 23309267
 Conc: 29.22 ng/ml



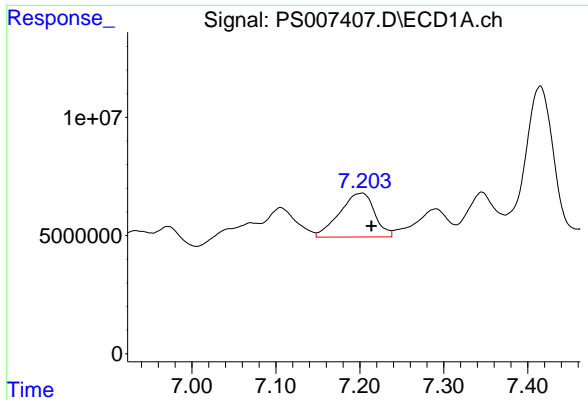
#10 Pentachlorophenol

R.T.: 0.000 min
 Exp R.T.: 6.680 min
 Response: 0
 Conc: N.D.



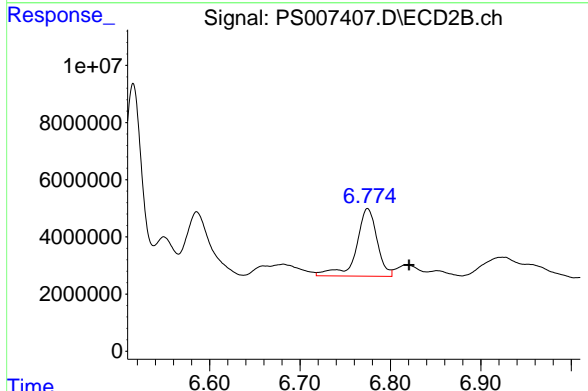
#10 Pentachlorophenol

R.T.: 6.515 min
 Delta R.T.: 0.058 min
 Response: 73052094
 Conc: 7.60 ng/ml

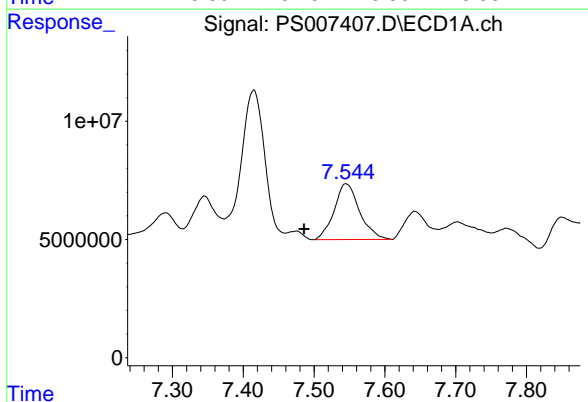


#11 2,4,5-TP (SILVEX)
 R.T.: 7.202 min
 Delta R.T.: -0.012 min
 Response: 53892641
 Conc: 7.73 ng/ml

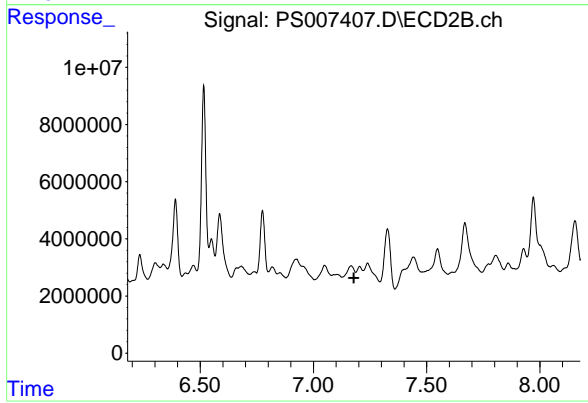
Instrument :
 ECD_S
 ClientSampled :



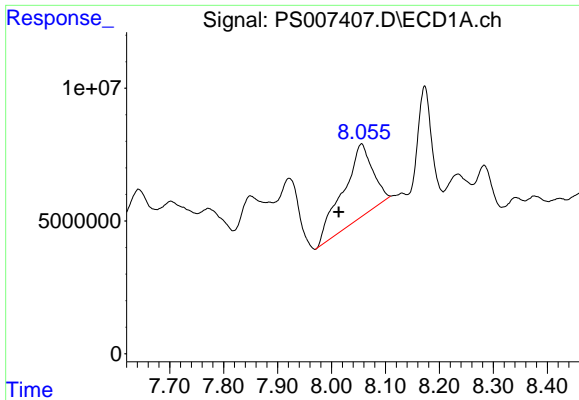
#11 2,4,5-TP (SILVEX)
 R.T.: 6.775 min
 Delta R.T.: -0.046 min
 Response: 37803429
 Conc: 9.94 ng/ml



#12 2,4,5-T
 R.T.: 7.545 min
 Delta R.T.: 0.059 min
 Response: 58904332
 Conc: 7.71 ng/ml

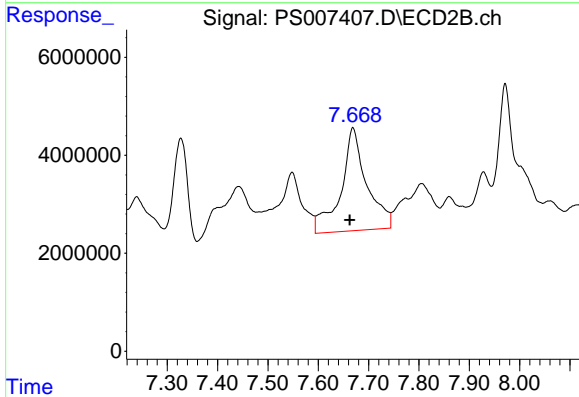


#12 2,4,5-T
 R.T.: 0.000 min
 Exp R.T.: 7.178 min
 Response: 0
 Conc: N.D.

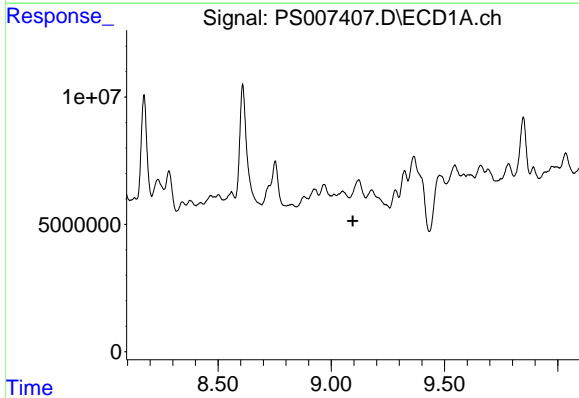


#13 2,4-DB
 R.T.: 8.056 min
 Delta R.T.: 0.042 min
 Response: 105864603
 Conc: 111.03 ng/ml

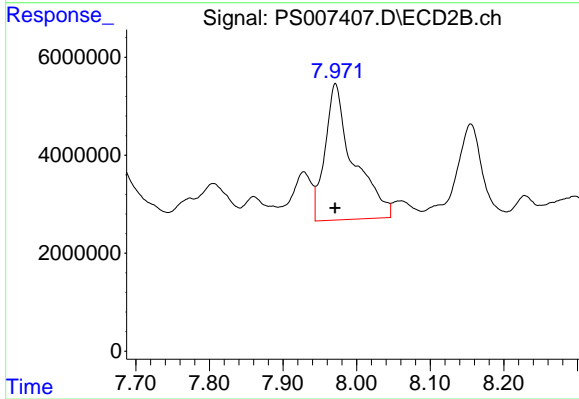
Instrument :
 ECD_S
 ClientSampled :



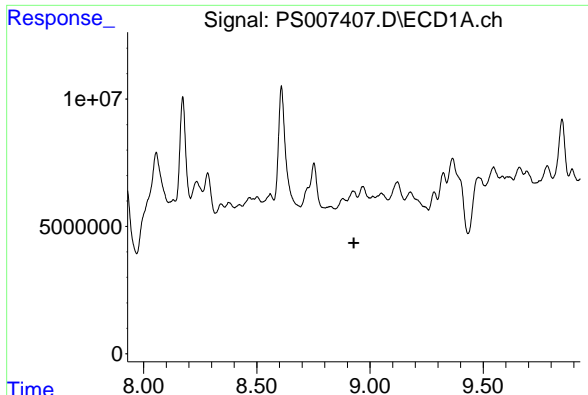
#13 2,4-DB
 R.T.: 7.669 min
 Delta R.T.: 0.007 min
 Response: 74587299
 Conc: 159.14 ng/ml



#14 DINOSEB
 R.T.: 0.000 min
 Exp R.T. : 9.095 min
 Response: 0
 Conc: N.D.



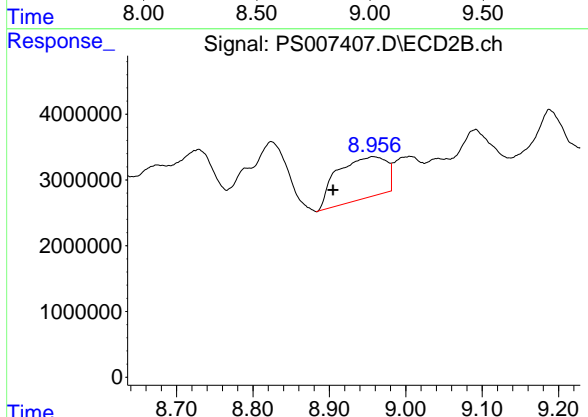
#14 DINOSEB
 R.T.: 7.971 min
 Delta R.T.: 0.000 min
 Response: 74431438
 Conc: 26.51 ng/ml



#15 Picloram

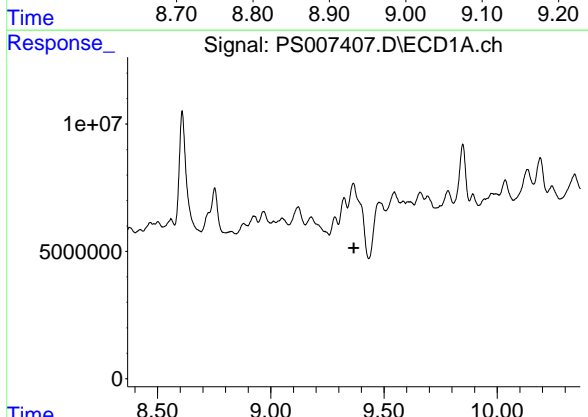
R.T.: 0.000 min
 Exp R.T. : 8.929 min
 Response: 0
 Conc: N.D.

Instrument :
 ECD_S
 ClientSampled :



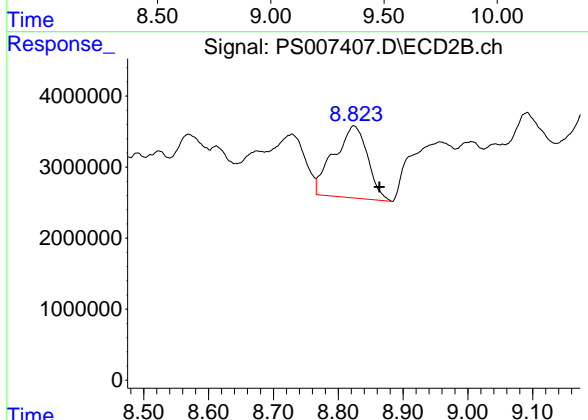
#15 Picloram

R.T.: 8.957 min
 Delta R.T.: 0.053 min
 Response: 28383450
 Conc: 4.62 ng/ml



#16 DCPA

R.T.: 0.000 min
 Exp R.T. : 9.367 min
 Response: 0
 Conc: N.D.



#16 DCPA

R.T.: 8.824 min
 Delta R.T.: -0.039 min
 Response: 36695553
 Conc: 7.32 ng/ml