

Data Path : Z:\pestpcbsrv\HPCHEM1\ECD_S\Data\PS102822\
 Data File : PS020934.D
 Signal(s) : Signal #1: ECD1A.ch Signal #2: ECD2B.ch
 Acq On : 28 Oct 2022 23:41
 Operator : AR\AJ
 Sample : N5234-06
 Misc :
 ALS Vial : 18 Sample Multiplier: 1

Instrument :
 ECD_S
ClientSampleId :
 LSP-SS-06-00-20

Manual Integrations
APPROVED
 Reviewed By :Abdul Mirza 10/31/2022
 Supervised By :Ankita Jodhani 11/01/2022

Integration File signal 1: autoint1.e
 Integration File signal 2: autoint2.e
 Quant Time: Oct 31 10:12:52 2022
 Quant Method : Z:\pestpcbsrv\HPCHEM1\ECD_S\Method\PS102822.M
 Quant Title : 8080.M
 QLast Update : Mon Oct 31 10:07:57 2022
 Response via : Initial Calibration
 Integrator: ChemStation

Volume Inj. : 2 µl
 Signal #1 Phase : Rtx-CLPesticides Signal #2 Phase: Rtx-CLPesticides2
 Signal #1 Info : 30M x 0.32mm x0.5 Signal #2 Info : 30M x 0.32mm x 0.25µm

Compound	RT#1	RT#2	Resp#1	Resp#2	ng/ml	ng/ml

System Monitoring Compounds						
4) S 2,4-DCAA	6.408	6.850	149.0E6	59590943	71.380m	43.084 #

Target Compounds

(f)=RT Delta > 1/2 Window (#)=Amounts differ by > 25% (m)=manual int.

Data Path : Z:\pestpcbsrv\HPCHEM1\ECD_S\Data\PS102822\
 Data File : PS020934.D
 Signal(s) : Signal #1: ECD1A.ch Signal #2: ECD2B.ch
 Acq On : 28 Oct 2022 23:41
 Operator : AR\AJ
 Sample : N5234-06
 Misc :
 ALS Vial : 18 Sample Multiplier: 1

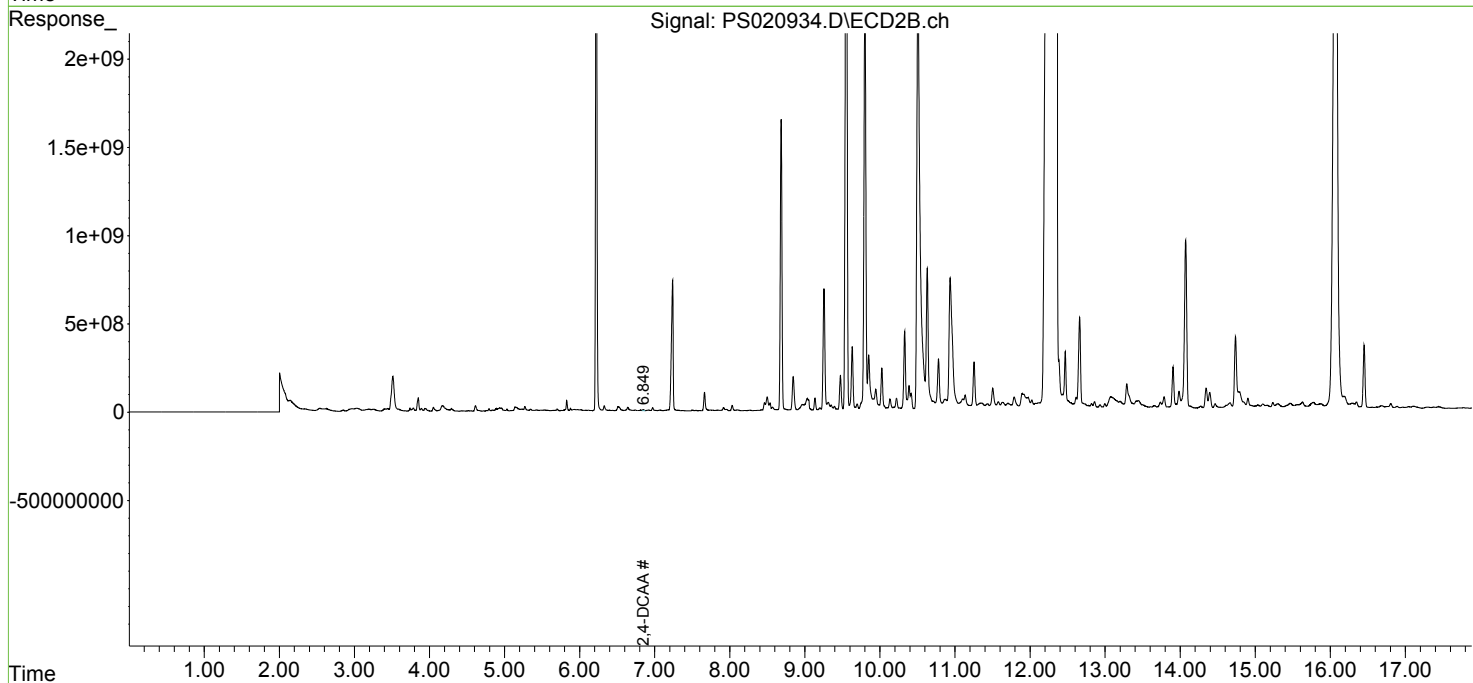
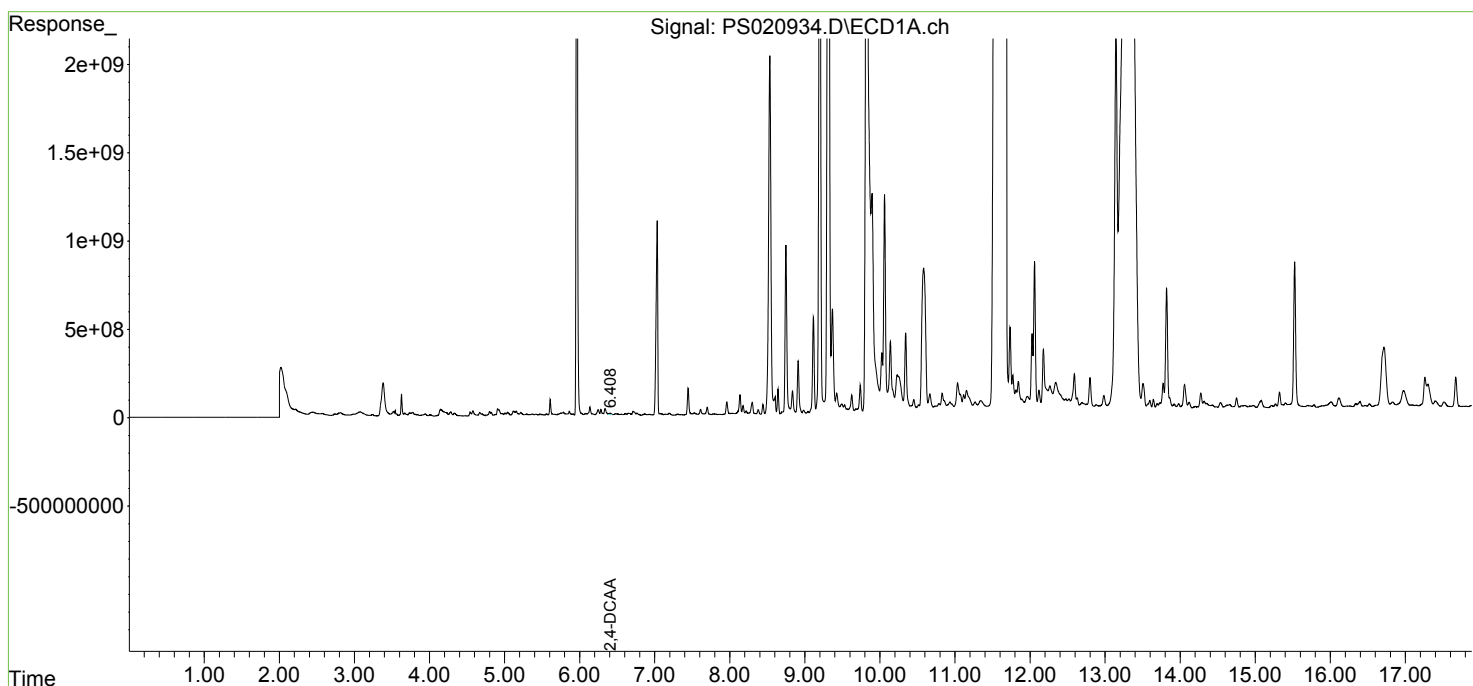
Instrument :
 ECD_S
ClientSampleId :
 LSP-SS-06-00-20

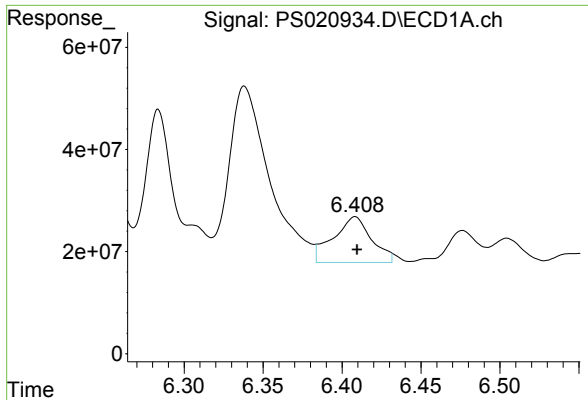
Manual Integrations
APPROVED

Reviewed By :Abdul Mirza 10/31/2022
 Supervised By :Ankita Jodhani 11/01/2022

Integration File signal 1: autoint1.e
 Integration File signal 2: autoint2.e
 Quant Time: Oct 31 10:12:52 2022
 Quant Method : Z:\pestpcbsrv\HPCHEM1\ECD_S\Method\PS102822.M
 Quant Title : 8080.M
 QLast Update : Mon Oct 31 10:07:57 2022
 Response via : Initial Calibration
 Integrator: ChemStation

Volume Inj. : 2 µl
 Signal #1 Phase : Rtx-CLPesticides Signal #2 Phase: Rtx-CLPesticides2
 Signal #1 Info : 30M x 0.32mm x0.5 Signal #2 Info : 30M x 0.32mm x 0.25µm

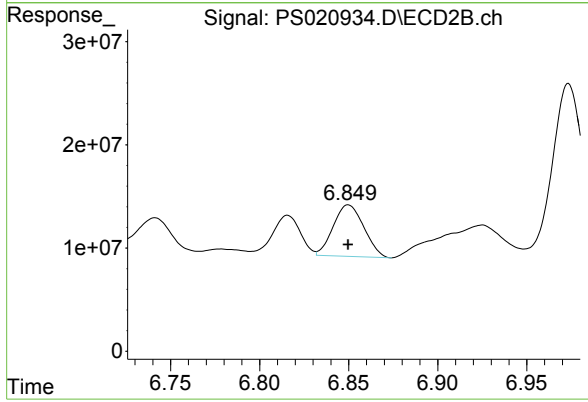




#4 2,4-DCAA
 R.T.: 6.408 min
 Delta R.T.: -0.001 min
 Response: 148976462
 Conc: 71.38 ng/ml

Instrument : ECD_S
 ClientSampleId : LSP-SS-06-00-20

Manual Integrations
APPROVED
 Reviewed By :Abdul Mirza 10/31/2022
 Supervised By :Ankita Jodhani 11/01/2022



#4 2,4-DCAA
 R.T.: 6.850 min
 Delta R.T.: 0.000 min
 Response: 59590943
 Conc: 43.08 ng/ml