

Data Path : Z:\pestpcbsrv\HPCHEM1\ECD_S\Data\PS102919\
 Data File : PS007431.D
 Signal(s) : Signal #1: ECD1A.ch Signal #2: ECD2B.ch
 Acq On : 29 Oct 2019 09:33
 Operator : SM\AJ
 Sample : HSTDCCC750
 Misc :
 ALS Vial : 3 Sample Multiplier: 1

Instrument :
 ECD_S
 ClientSampleId :

Integration File signal 1: autoint1.e
 Integration File signal 2: autoint2.e
 Quant Time: Oct 30 03:38:33 2019
 Quant Method : Z:\pestpcbsrv\HPCHEM1\ECD_S\Method\PS101419.M
 Quant Title : 8080.M
 QLast Update : Mon Oct 14 13:54:23 2019
 Response via : Initial Calibration
 Integrator: ChemStation

Volume Inj. : 2 µl
 Signal #1 Phase : Rtx-CLPesticides Signal #2 Phase: Rtx-CLPesticides2
 Signal #1 Info : 30M x 0.32mm x0.5 Signal #2 Info : 30M x 0.32mm x 0.25µm

	Compound	RT#1	RT#2	Resp#1	Resp#2	ng/ml	ng/ml

System Monitoring Compounds							
4) S	2,4-DCAA	5.446	5.156	1009.5E6	507.8E6	737.598	722.007
Target Compounds							
1) T	Dalapon	2.028	1.722	1139.6E6	600.1E6	681.057	659.486
2) T	3,5-DICHL...	4.821	4.465	1191.8E6	608.8E6	709.244	707.543
3) T	4-Nitroph...	5.298	4.847	416.7E6	243.1E6	693.891	615.576
5) T	DICAMBA	5.596	5.281	3532.2E6	1821.8E6	718.886	700.117
6) T	MCP P	5.748	0.000	270.4E6	0	76.706	N.D. #
7) T	MCPA	5.879	5.540	392.8E6	197.4E6	76.165	67.913
8) T	DICHLORPROP	6.217	5.807	874.4E6	453.6E6	745.920	696.496
9) T	2,4-D	6.429	6.075	967.7E6	547.6E6	785.286	686.441
10) T	Pentachlo...	6.689	6.438	13289.9E6	6829.7E6	744.444	710.210
11) T	2,4,5-TP ...	7.221	6.800	5258.5E6	2714.4E6	754.487	713.627
12) T	2,4,5-T	7.491	7.192	5608.3E6	2517.8E6	733.615	718.631
13) T	2,4-DB	8.017	7.642	737.9E6	353.7E6	773.963	754.705
14) T	DINOSEB	9.103	7.952	4055.7E6	2000.6E6	696.960	712.642
15) T	Picloram	8.933	8.885	8084.7E6	4164.5E6	732.493	678.248
16) T	DCPA	9.375	8.845	6812.9E6	3627.4E6	760.847	723.358

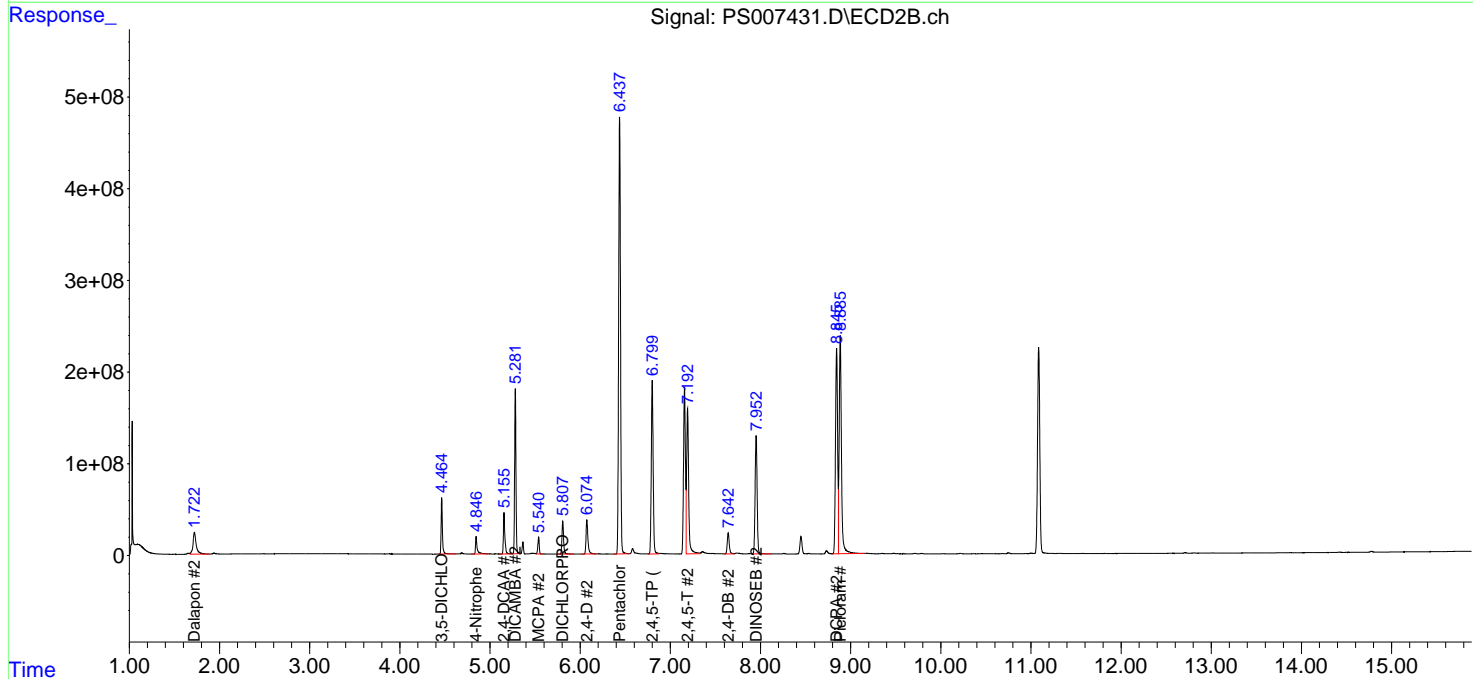
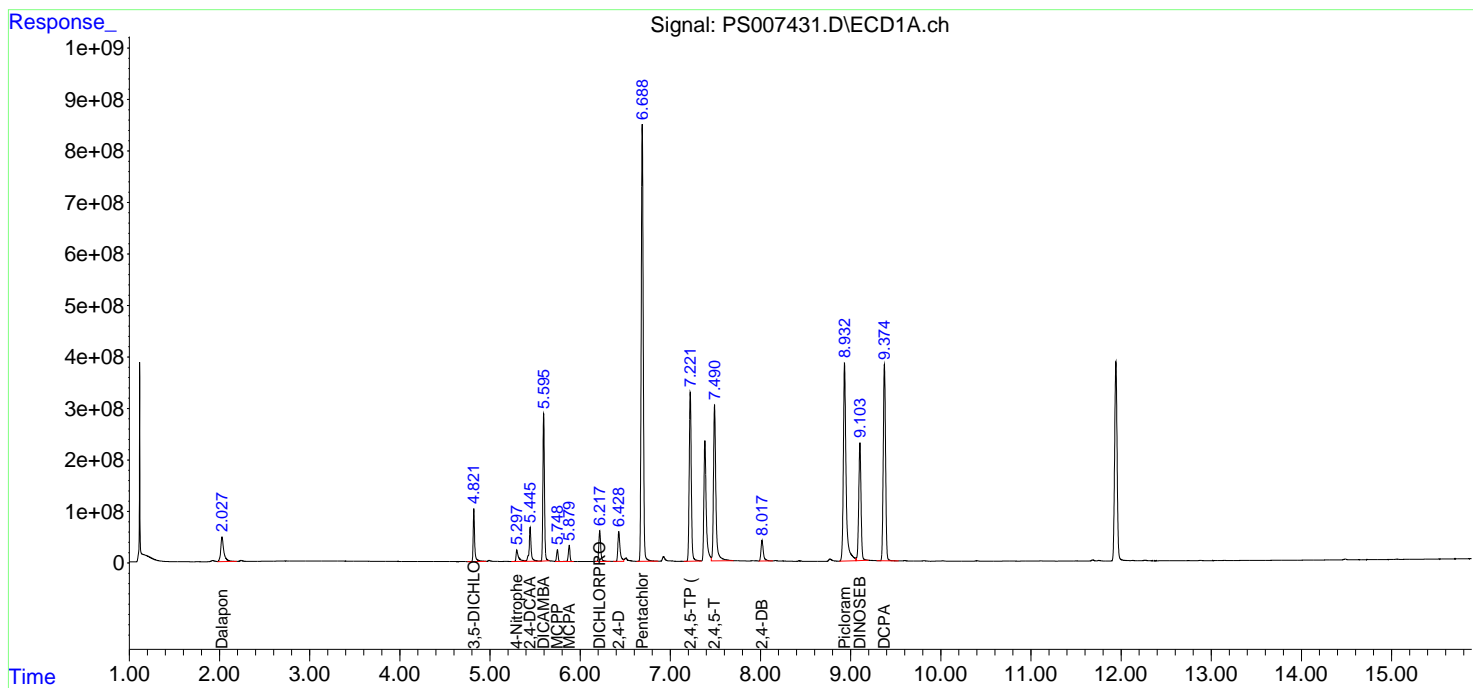
(f)=RT Delta > 1/2 Window (#)=Amounts differ by > 25% (m)=manual int.

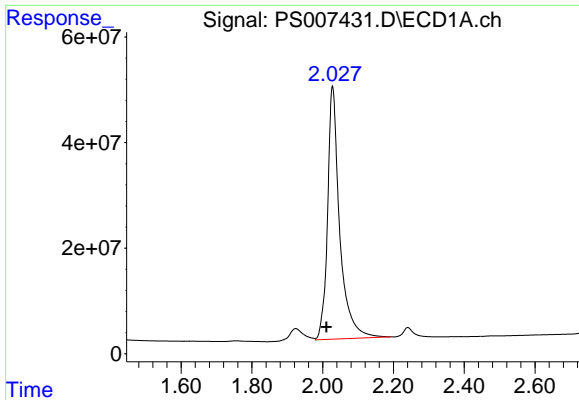
Data Path : Z:\pestpcbsrv\HPCHEM1\ECD_S\Data\PS102919\
 Data File : PS007431.D
 Signal(s) : Signal #1: ECD1A.ch Signal #2: ECD2B.ch
 Acq On : 29 Oct 2019 09:33
 Operator : SM\AJ
 Sample : HSTDCCC750
 Misc :
 ALS Vial : 3 Sample Multiplier: 1

Instrument :
 ECD_S
 ClientSampled :

Integration File signal 1: autoint1.e
 Integration File signal 2: autoint2.e
 Quant Time: Oct 30 03:38:33 2019
 Quant Method : Z:\pestpcbsrv\HPCHEM1\ECD_S\Method\PS101419.M
 Quant Title : 8080.M
 QLast Update : Mon Oct 14 13:54:23 2019
 Response via : Initial Calibration
 Integrator: ChemStation

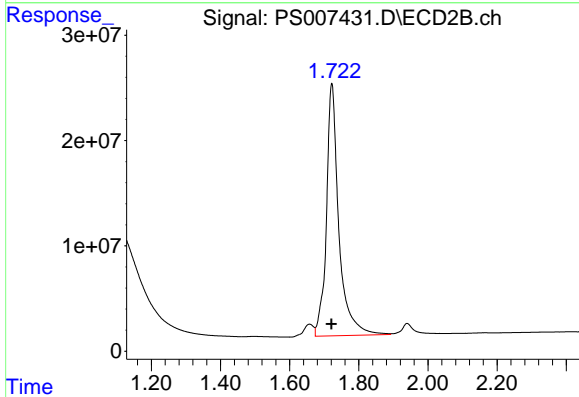
Volume Inj. : 2 µl
 Signal #1 Phase : Rtx-CLPesticides Signal #2 Phase: Rtx-CLPesticides2
 Signal #1 Info : 30M x 0.32mm x 0.5 Signal #2 Info : 30M x 0.32mm x 0.25µm



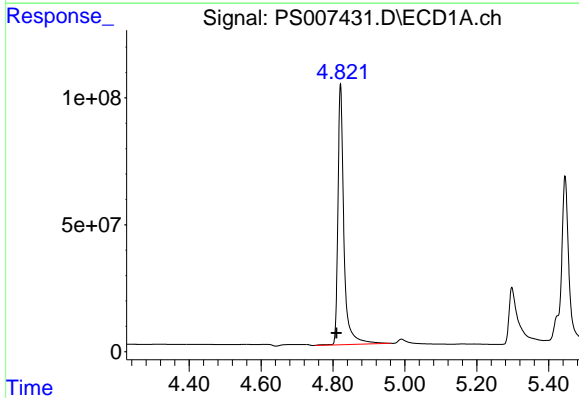


#1 Dalapon
 R.T.: 2.028 min
 Delta R.T.: 0.017 min
 Response: 1139599048
 Conc: 681.06 ng/ml

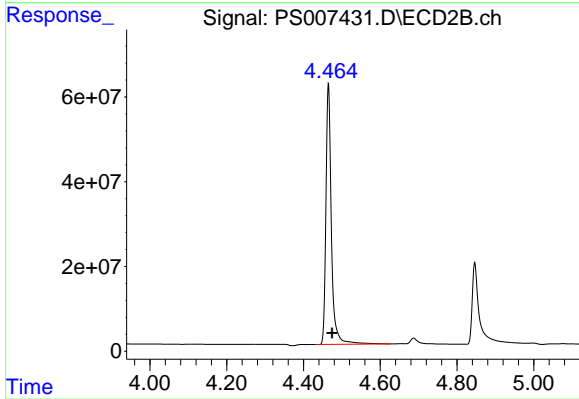
Instrument :
 ECD_S
 ClientSampleId :



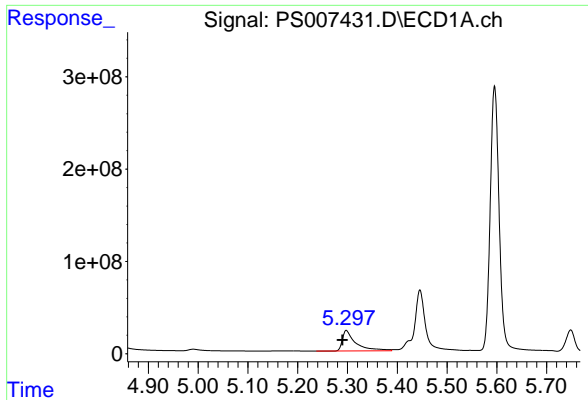
#1 Dalapon
 R.T.: 1.722 min
 Delta R.T.: 0.001 min
 Response: 600134507
 Conc: 659.49 ng/ml



#2 3,5-DICHLOROBENZOIC ACID
 R.T.: 4.821 min
 Delta R.T.: 0.011 min
 Response: 1191790124
 Conc: 709.24 ng/ml

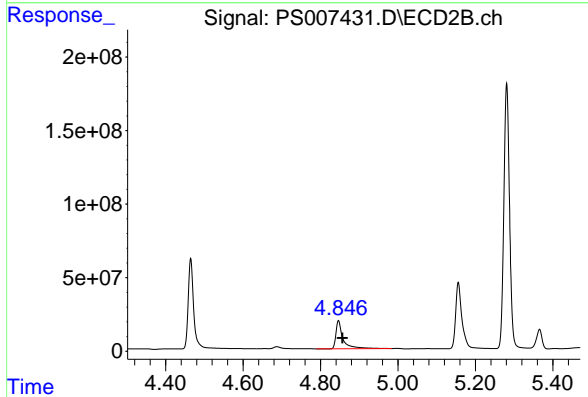


#2 3,5-DICHLOROBENZOIC ACID
 R.T.: 4.465 min
 Delta R.T.: -0.010 min
 Response: 608792301
 Conc: 707.54 ng/ml

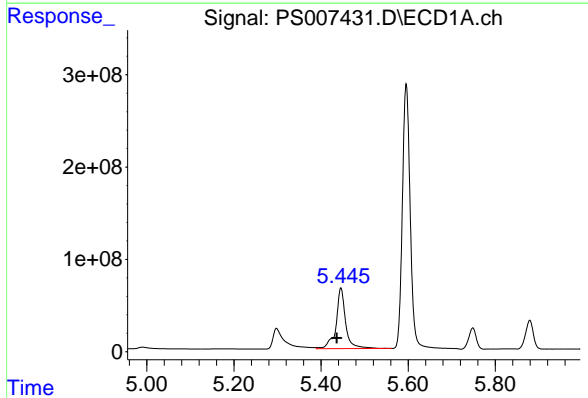


#3 4-Nitrophenol
 R.T.: 5.298 min
 Delta R.T.: 0.008 min
 Response: 416662898
 Conc: 693.89 ng/ml

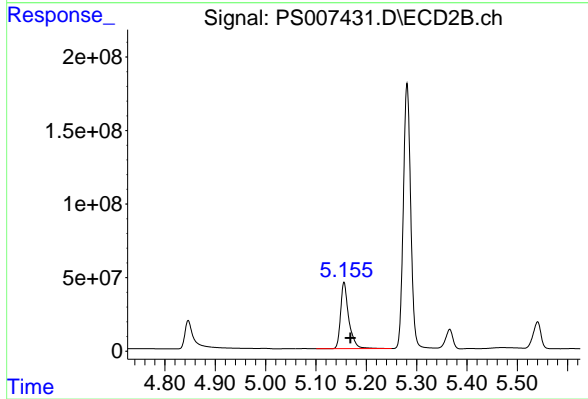
Instrument :
 ECD_S
 ClientSampleId :



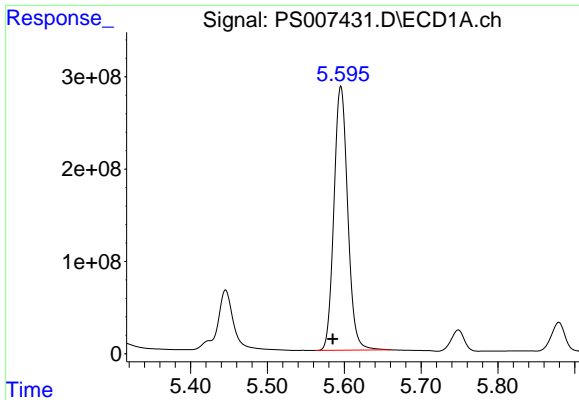
#3 4-Nitrophenol
 R.T.: 4.847 min
 Delta R.T.: -0.010 min
 Response: 243087752
 Conc: 615.58 ng/ml



#4 2,4-DCAA
 R.T.: 5.446 min
 Delta R.T.: 0.010 min
 Response: 1009526847
 Conc: 737.60 ng/ml



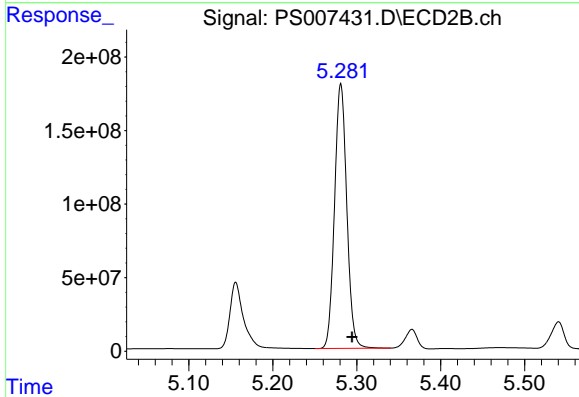
#4 2,4-DCAA
 R.T.: 5.156 min
 Delta R.T.: -0.012 min
 Response: 507792377
 Conc: 722.01 ng/ml



#5 DICAMBA

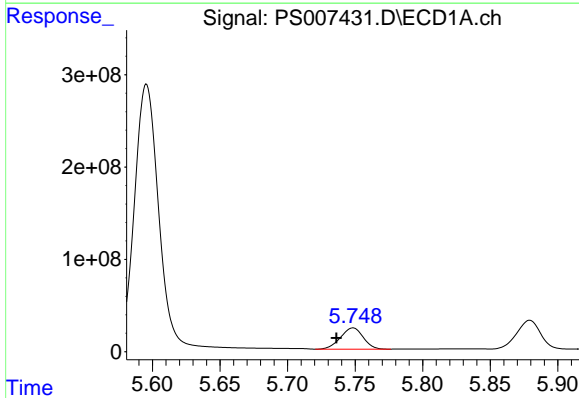
R.T.: 5.596 min
 Delta R.T.: 0.010 min
 Response: 3532181276
 Conc: 718.89 ng/ml

Instrument :
 ECD_S
 ClientSampled :



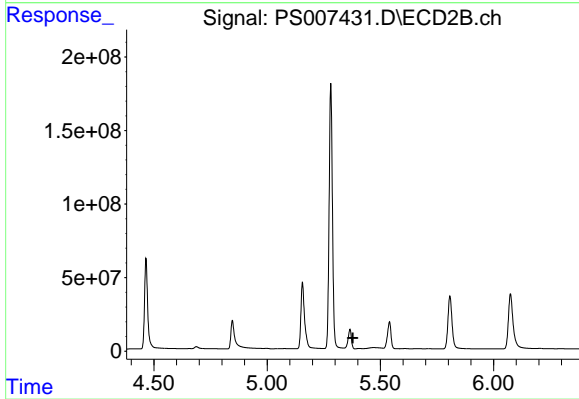
#5 DICAMBA

R.T.: 5.281 min
 Delta R.T.: -0.013 min
 Response: 1821779054
 Conc: 700.12 ng/ml



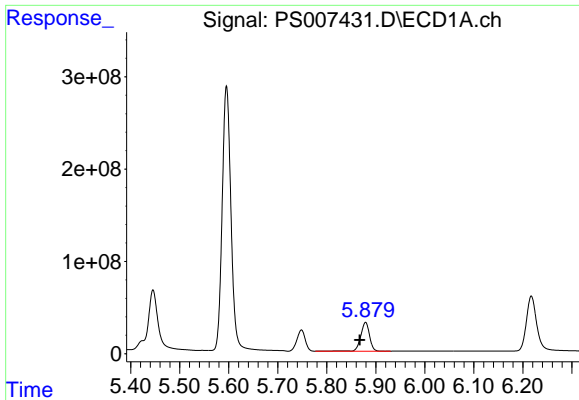
#6 MCPP

R.T.: 5.748 min
 Delta R.T.: 0.012 min
 Response: 270357294
 Conc: 76.71 ug/ml



#6 MCPP

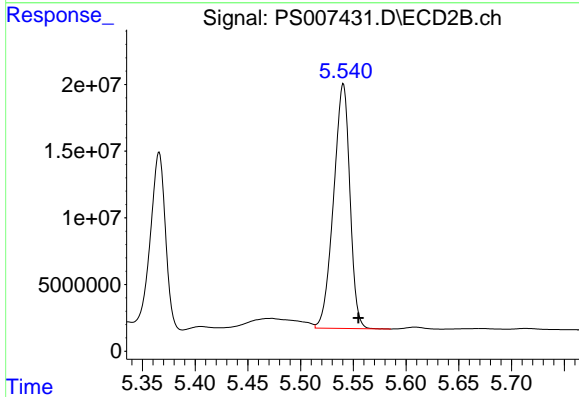
R.T.: 0.000 min
 Exp R.T. : 5.379 min
 Response: 0
 Conc: N.D.



#7 MCPA

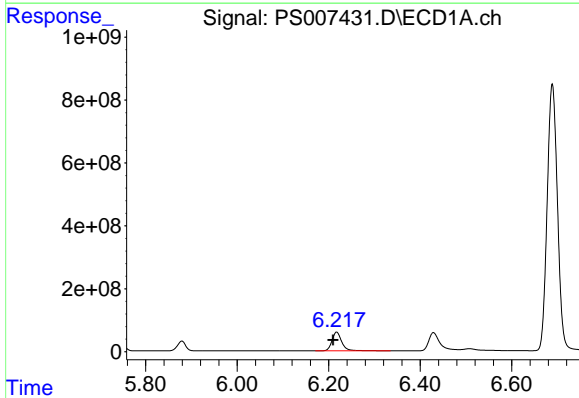
R.T.: 5.879 min
 Delta R.T.: 0.012 min
 Response: 392845439
 Conc: 76.16 ug/ml

Instrument :
 ECD_S
 ClientSampled :



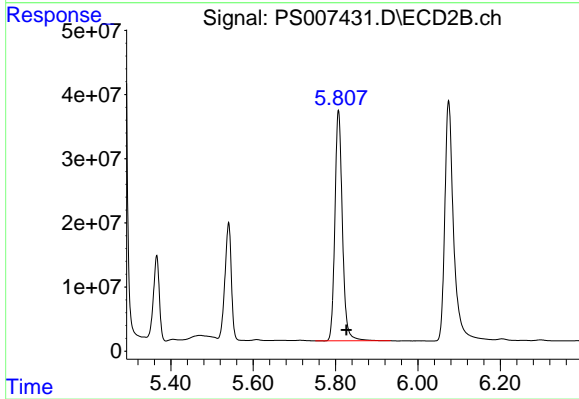
#7 MCPA

R.T.: 5.540 min
 Delta R.T.: -0.015 min
 Response: 197433164
 Conc: 67.91 ug/ml



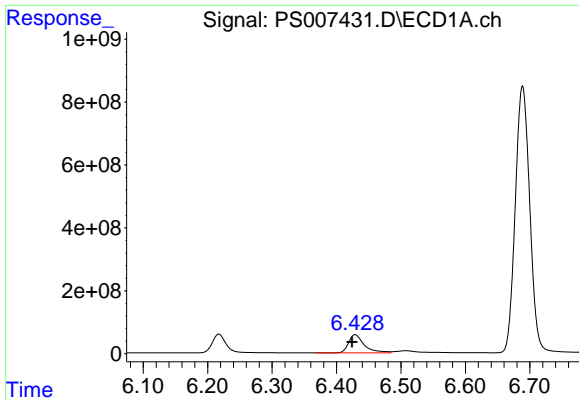
#8 DICHLORPROP

R.T.: 6.217 min
 Delta R.T.: 0.008 min
 Response: 874389311
 Conc: 745.92 ng/ml



#8 DICHLORPROP

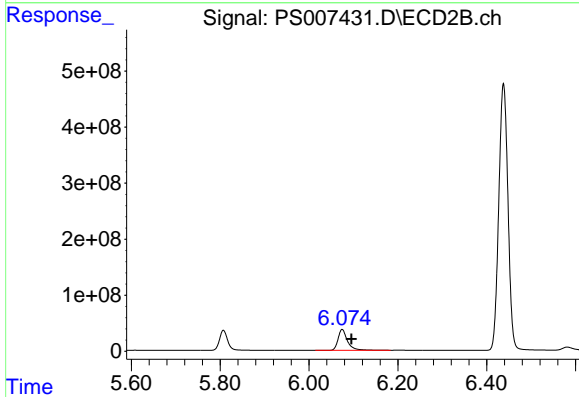
R.T.: 5.807 min
 Delta R.T.: -0.019 min
 Response: 453569323
 Conc: 696.50 ng/ml



#9 2,4-D

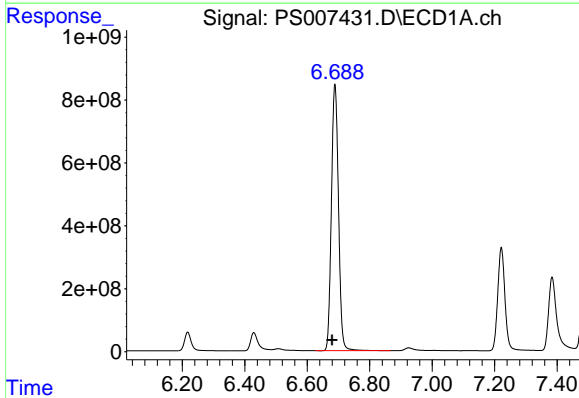
R.T.: 6.429 min
Delta R.T.: 0.005 min
Response: 967741365
Conc: 785.29 ng/ml

Instrument :
ECD_S
ClientSampleId :



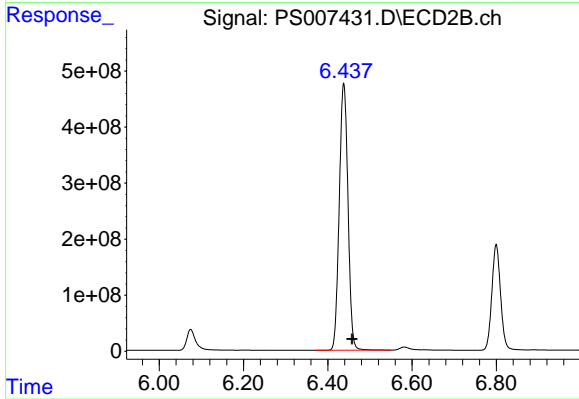
#9 2,4-D

R.T.: 6.075 min
Delta R.T.: -0.021 min
Response: 547639978
Conc: 686.44 ng/ml



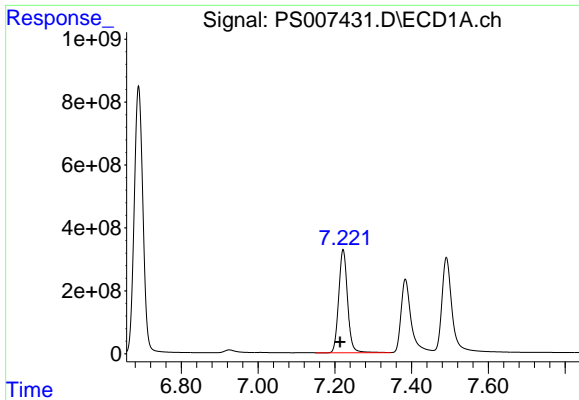
#10 Pentachlorophenol

R.T.: 6.689 min
Delta R.T.: 0.009 min
Response: 13289927882
Conc: 744.44 ng/ml



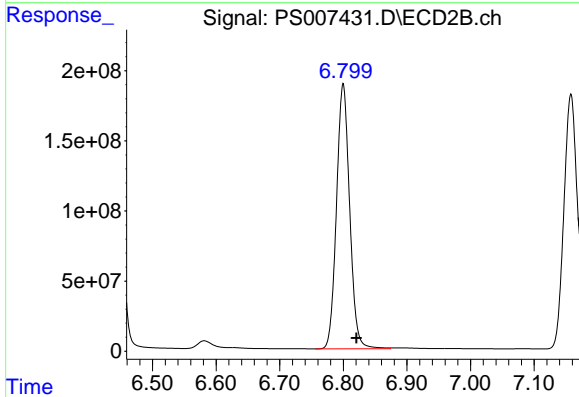
#10 Pentachlorophenol

R.T.: 6.438 min
Delta R.T.: -0.019 min
Response: 6829660289
Conc: 710.21 ng/ml

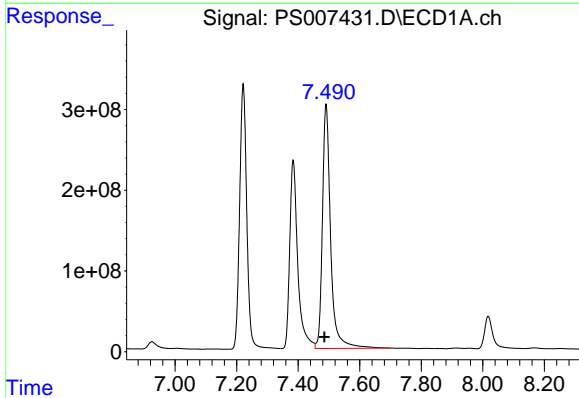


#11 2,4,5-TP (SILVEX)
 R.T.: 7.221 min
 Delta R.T.: 0.008 min
 Response: 5258531090
 Conc: 754.49 ng/ml

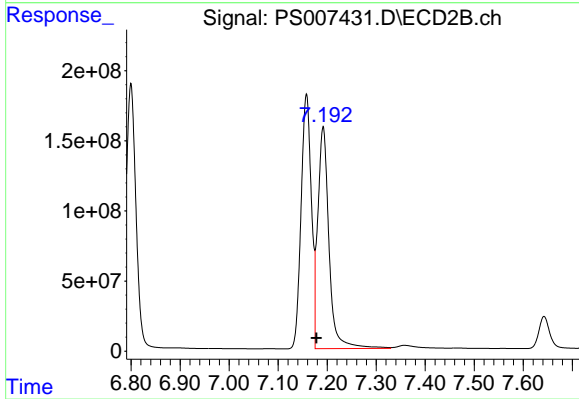
Instrument :
 ECD_S
 ClientSampleId :



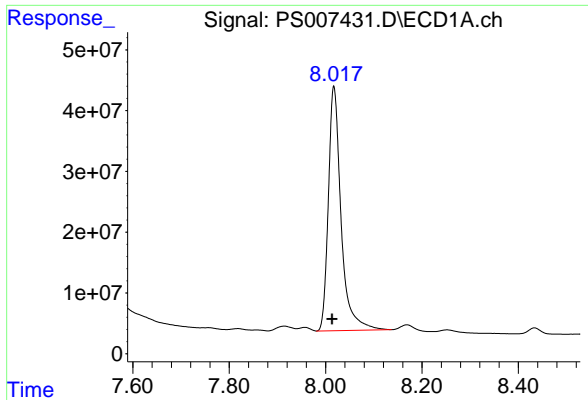
#11 2,4,5-TP (SILVEX)
 R.T.: 6.800 min
 Delta R.T.: -0.021 min
 Response: 2714359808
 Conc: 713.63 ng/ml



#12 2,4,5-T
 R.T.: 7.491 min
 Delta R.T.: 0.005 min
 Response: 5608303907
 Conc: 733.62 ng/ml

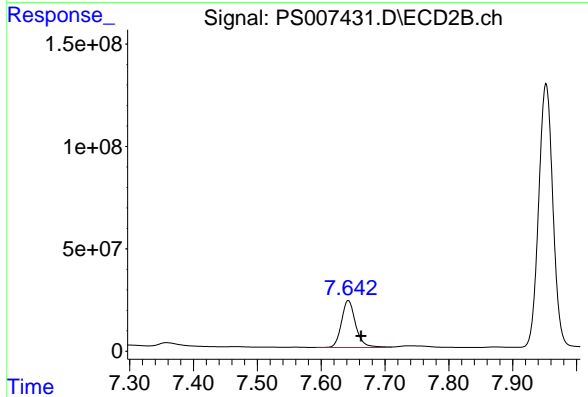


#12 2,4,5-T
 R.T.: 7.192 min
 Delta R.T.: 0.014 min
 Response: 2517818814
 Conc: 718.63 ng/ml

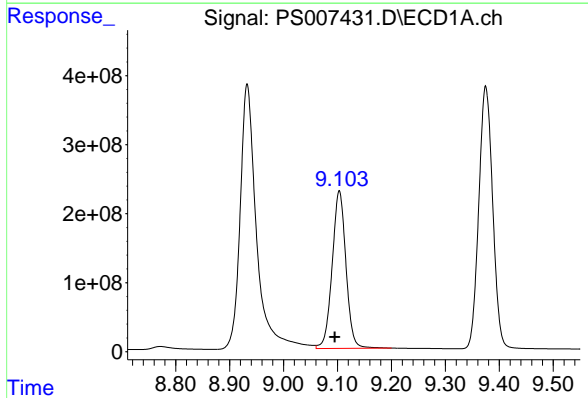


#13 2,4-DB
 R.T.: 8.017 min
 Delta R.T.: 0.004 min
 Response: 737944112
 Conc: 773.96 ng/ml

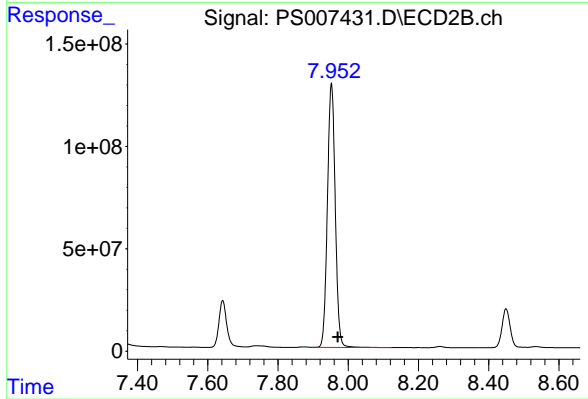
Instrument :
 ECD_S
 ClientSampled :



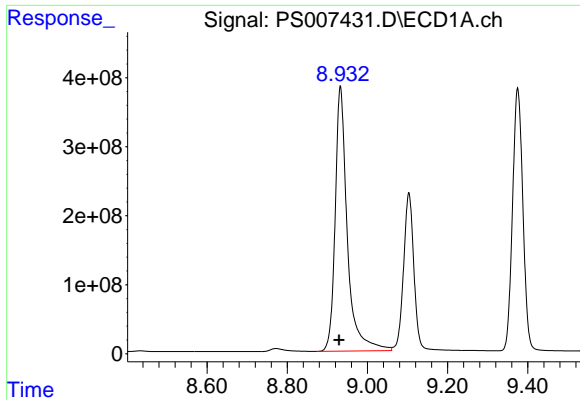
#13 2,4-DB
 R.T.: 7.642 min
 Delta R.T.: -0.020 min
 Response: 353727348
 Conc: 754.70 ng/ml



#14 DINOSEB
 R.T.: 9.103 min
 Delta R.T.: 0.008 min
 Response: 4055739455
 Conc: 696.96 ng/ml



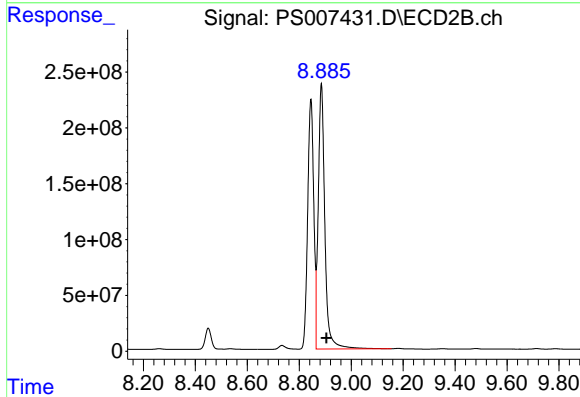
#14 DINOSEB
 R.T.: 7.952 min
 Delta R.T.: -0.018 min
 Response: 2000644731
 Conc: 712.64 ng/ml



#15 Picloram

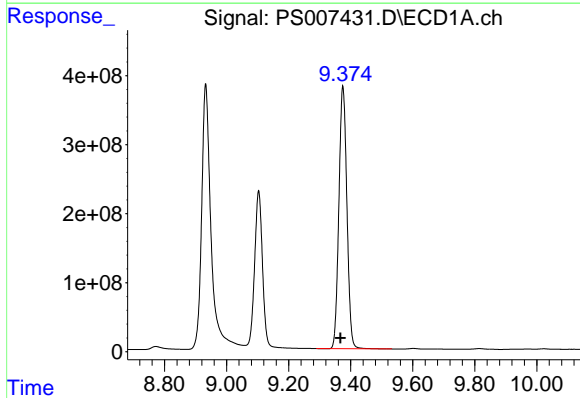
R.T.: 8.933 min
 Delta R.T.: 0.004 min
 Response: 8084741398
 Conc: 732.49 ng/ml

Instrument :
 ECD_S
 ClientSampled :



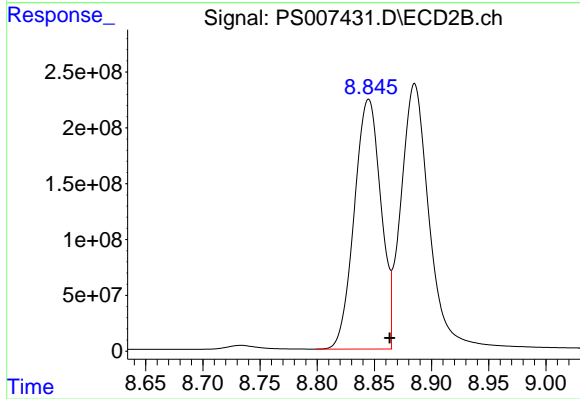
#15 Picloram

R.T.: 8.885 min
 Delta R.T.: -0.020 min
 Response: 4164548150
 Conc: 678.25 ng/ml



#16 DCPA

R.T.: 9.375 min
 Delta R.T.: 0.008 min
 Response: 6812853846
 Conc: 760.85 ng/ml



#16 DCPA

R.T.: 8.845 min
 Delta R.T.: -0.019 min
 Response: 3627392038
 Conc: 723.36 ng/ml