

Data Path : Z:\pestpcbsrv\HPCHEM1\ECD_S\Data\PS102919\
 Data File : PS007450.D
 Signal(s) : Signal #1: ECD1A.ch Signal #2: ECD2B.ch
 Acq On : 29 Oct 2019 16:30
 Operator : SM\AJ
 Sample : K5542-11
 Misc :
 ALS Vial : 20 Sample Multiplier: 1

Instrument :
 ECD_S
 ClientSampleId :
 201-22-(0-1)

Integration File signal 1: autoint1.e
 Integration File signal 2: autoint2.e
 Quant Time: Oct 30 03:44:34 2019
 Quant Method : Z:\pestpcbsrv\HPCHEM1\ECD_S\Method\PS101419.M
 Quant Title : 8080.M
 QLast Update : Mon Oct 14 13:54:23 2019
 Response via : Initial Calibration
 Integrator: ChemStation

Volume Inj. : 2 µl
 Signal #1 Phase : Rtx-CLPesticides Signal #2 Phase: Rtx-CLPesticides2
 Signal #1 Info : 30M x 0.32mm x0.5 Signal #2 Info : 30M x 0.32mm x 0.25µm

Compound	RT#1	RT#2	Resp#1	Resp#2	ng/ml	ng/ml

System Monitoring Compounds						
4) S 2,4-DCAA	5.449	5.176	211.8E6	105.2E6	154.747	149.557
Target Compounds						
1) T Dalapon	2.010	1.677	79824775	784.1E6	47.706	861.664 #
2) T 3,5-DICHL...	0.000	4.510	0	103.6E6	N.D.	120.459
3) T 4-Nitroph...	0.000	4.853	0	8378968	N.D.	21.218
5) T DICAMBA	5.544	5.287	45359626	22327891	9.232	8.581
7) T MCPA	5.919	5.545	27936706	28055017	5.416	9.650 #
9) T 2,4-D	0.000	6.080	0	8669528	N.D.	10.867
10) T Pentachlo...	6.692	6.460	86044833	41869381	4.820	4.354
11) T 2,4,5-TP ...	0.000	6.772	0	131.9E6	N.D.	34.689
12) T 2,4,5-T	7.420	7.171	324.9E6	21525626	42.499	6.144 #
13) T 2,4-DB	8.047	7.663	109.1E6	15404793	114.444	32.867 #
14) T DINOSEB	0.000	7.967	0	15764778	N.D.	5.616
15) T Picloram	0.000	8.906	0	10453089	N.D.	1.702
16) T DCPA	0.000	8.906	0	10453089	N.D.	2.085

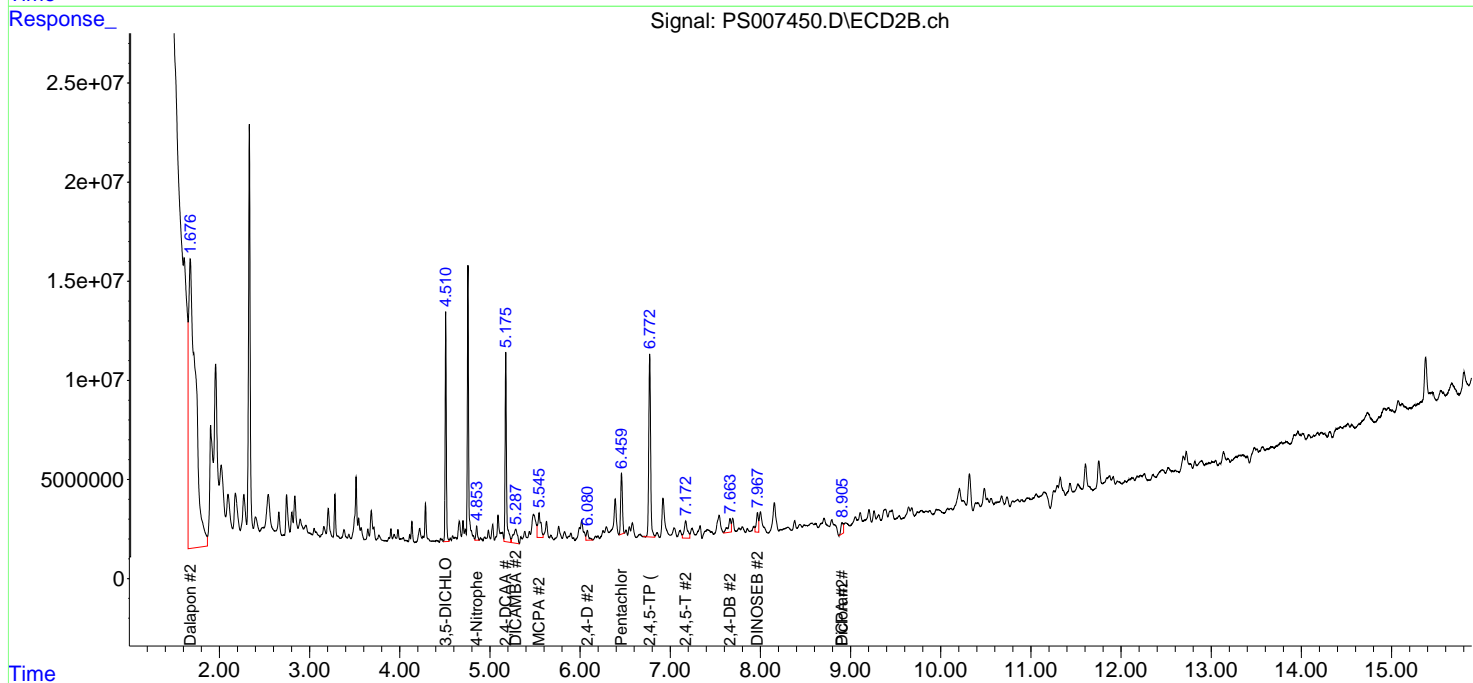
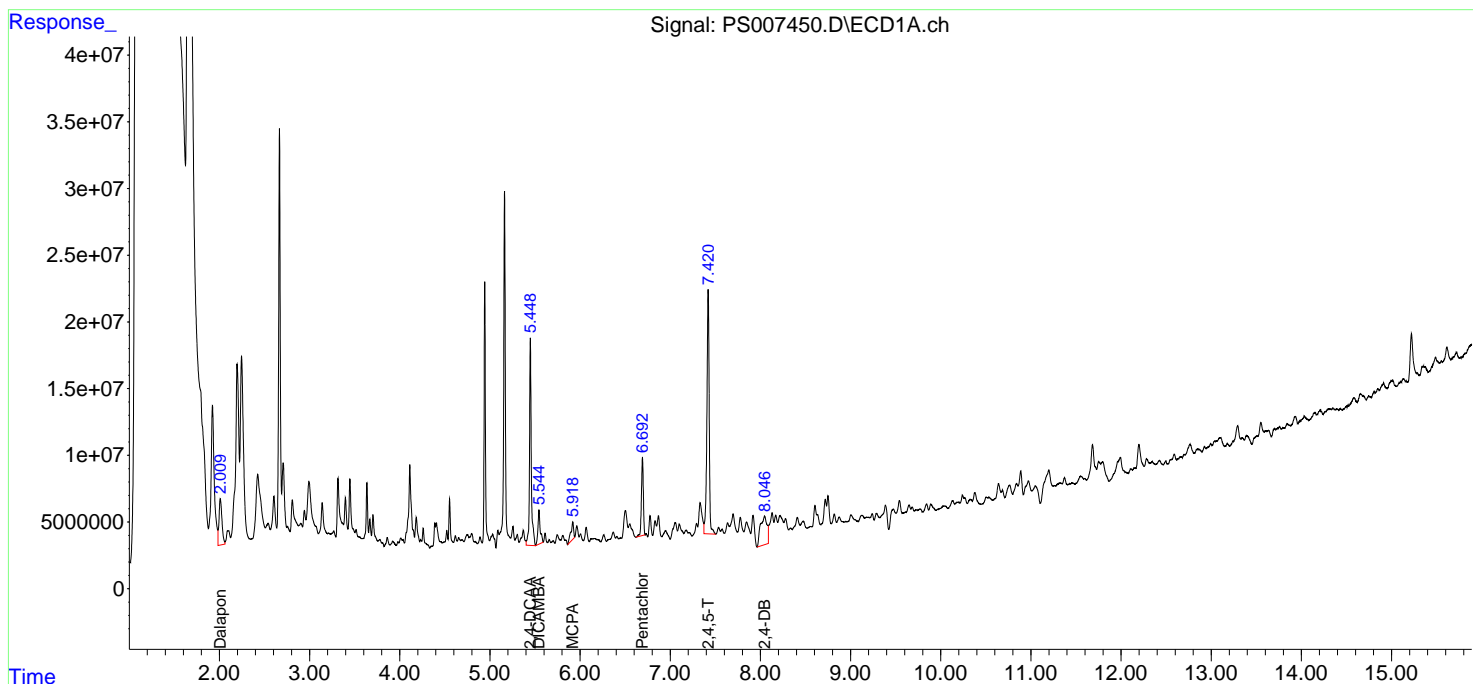
(f)=RT Delta > 1/2 Window (#)=Amounts differ by > 25% (m)=manual int.

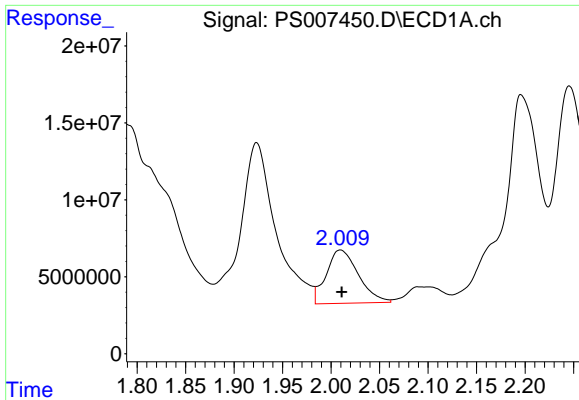
Data Path : Z:\pestpcbsrv\HPCHEM1\ECD_S\Data\PS102919\
 Data File : PS007450.D
 Signal(s) : Signal #1: ECD1A.ch Signal #2: ECD2B.ch
 Acq On : 29 Oct 2019 16:30
 Operator : SM\AJ
 Sample : K5542-11
 Misc :
 ALS Vial : 20 Sample Multiplier: 1

Instrument :
 ECD_S
 Client Sampled :
 201-22-(0-1)

Integration File signal 1: autoint1.e
 Integration File signal 2: autoint2.e
 Quant Time: Oct 30 03:44:34 2019
 Quant Method : Z:\pestpcbsrv\HPCHEM1\ECD_S\Method\PS101419.M
 Quant Title : 8080.M
 QLast Update : Mon Oct 14 13:54:23 2019
 Response via : Initial Calibration
 Integrator: ChemStation

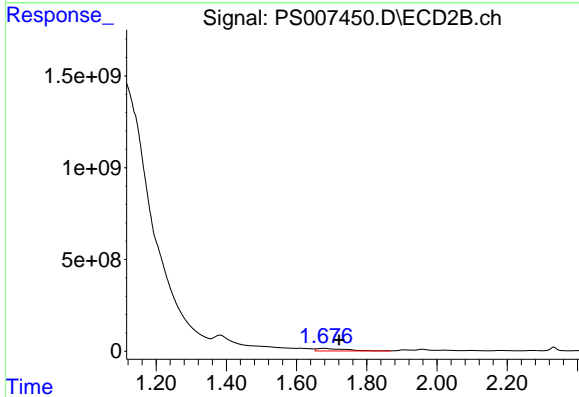
Volume Inj. : 2 µl
 Signal #1 Phase : Rtx-CLPesticides Signal #2 Phase: Rtx-CLPesticides2
 Signal #1 Info : 30M x 0.32mm x 0.5 Signal #2 Info : 30M x 0.32mm x 0.25µm



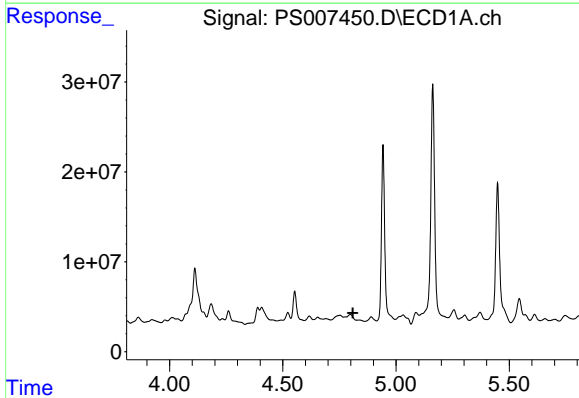


#1 Dalapon
 R.T.: 2.010 min
 Delta R.T.: -0.001 min
 Response: 79824775
 Conc: 47.71 ng/ml

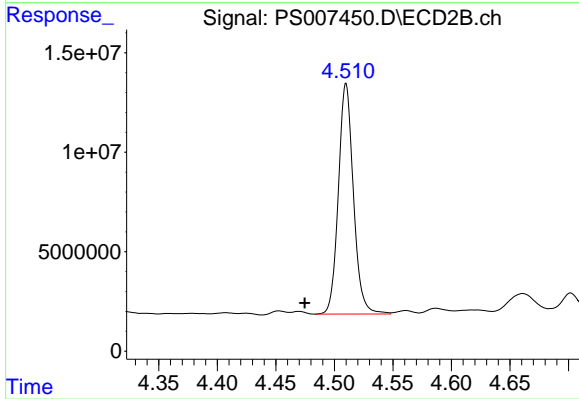
Instrument :
 ECD_S
 ClientSampleId :
 201-22-(0-1)



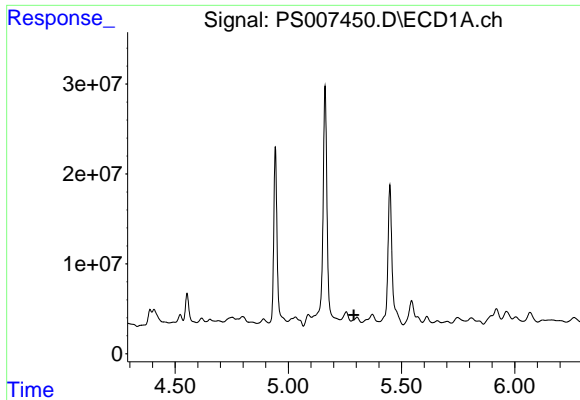
#1 Dalapon
 R.T.: 1.677 min
 Delta R.T.: -0.044 min
 Response: 784117364
 Conc: 861.66 ng/ml



#2 3,5-DICHLOROBENZOIC ACID
 R.T.: 0.000 min
 Exp R.T. : 4.810 min
 Response: 0
 Conc: N.D.



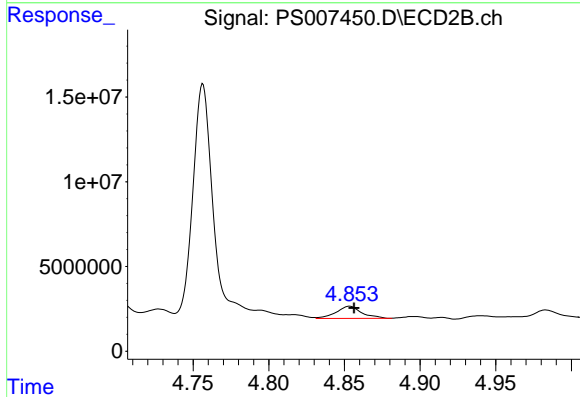
#2 3,5-DICHLOROBENZOIC ACID
 R.T.: 4.510 min
 Delta R.T.: 0.035 min
 Response: 103646915
 Conc: 120.46 ng/ml



#3 4-Nitrophenol

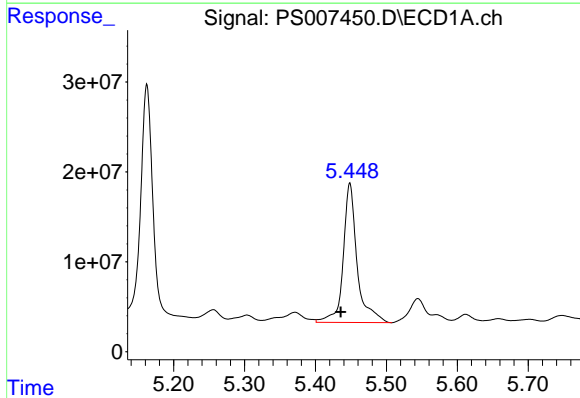
R.T.: 0.000 min
 Exp R.T.: 5.290 min
 Response: 0
 Conc: N.D.

Instrument :
 ECD_S
 ClientSampleId :
 201-22-(0-1)



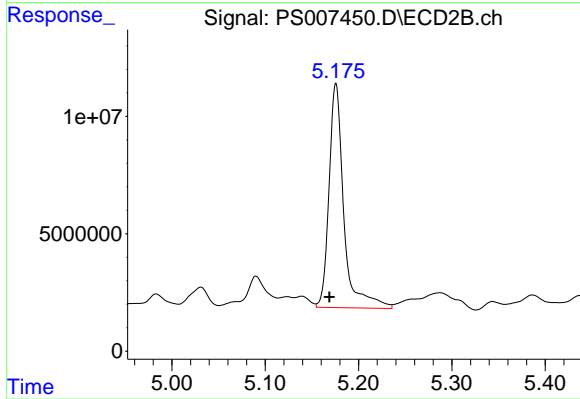
#3 4-Nitrophenol

R.T.: 4.853 min
 Delta R.T.: -0.003 min
 Response: 8378968
 Conc: 21.22 ng/ml



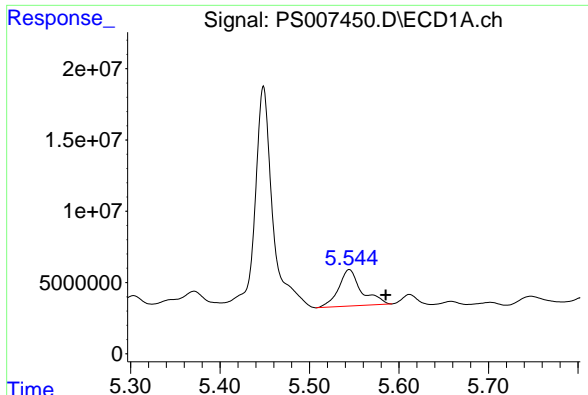
#4 2,4-DCAA

R.T.: 5.449 min
 Delta R.T.: 0.013 min
 Response: 211797425
 Conc: 154.75 ng/ml



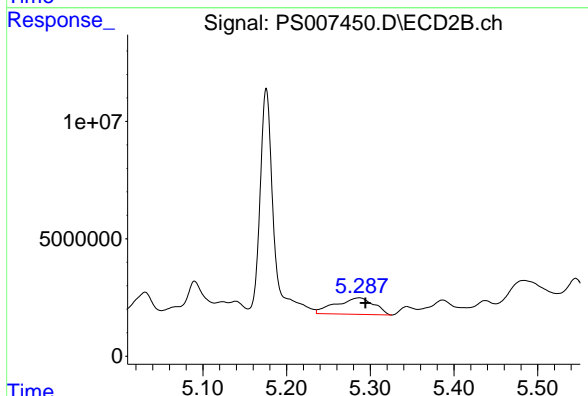
#4 2,4-DCAA

R.T.: 5.176 min
 Delta R.T.: 0.007 min
 Response: 105184189
 Conc: 149.56 ng/ml

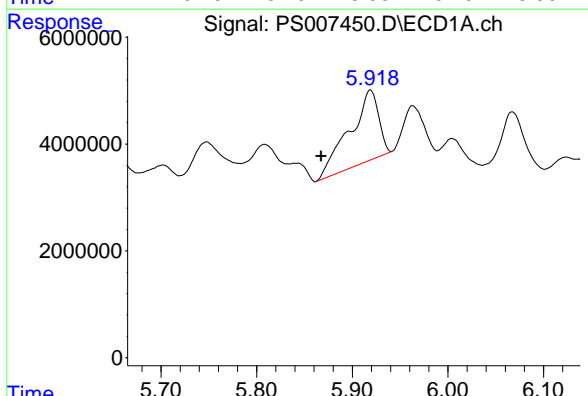


#5 DICAMBA
 R.T.: 5.544 min
 Delta R.T.: -0.041 min
 Response: 45359626
 Conc: 9.23 ng/ml

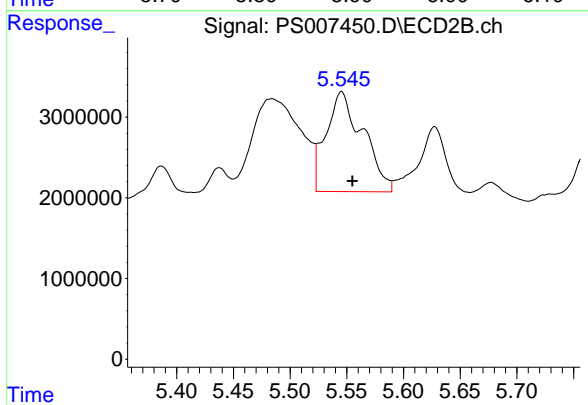
Instrument :
 ECD_S
 ClientSampled :
 201-22-(0-1)



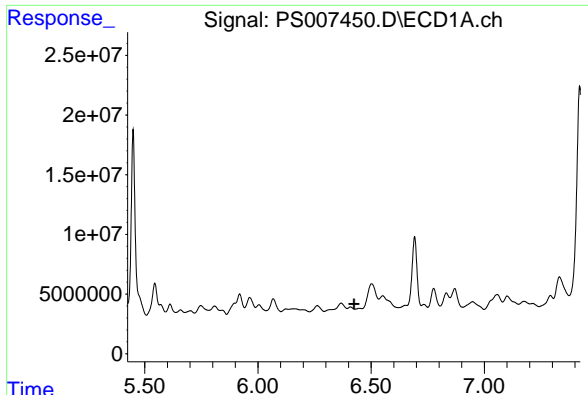
#5 DICAMBA
 R.T.: 5.287 min
 Delta R.T.: -0.008 min
 Response: 22327891
 Conc: 8.58 ng/ml



#7 MCPA
 R.T.: 5.919 min
 Delta R.T.: 0.051 min
 Response: 27936706
 Conc: 5.42 ug/ml



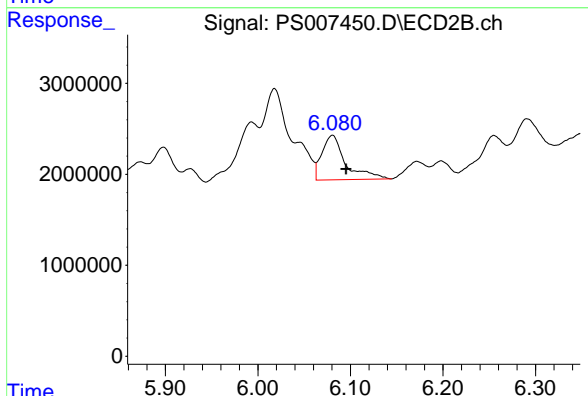
#7 MCPA
 R.T.: 5.545 min
 Delta R.T.: -0.010 min
 Response: 28055017
 Conc: 9.65 ug/ml



#9 2,4-D

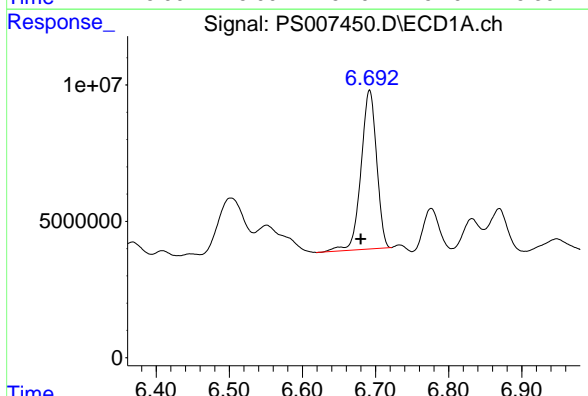
R.T.: 0.000 min
 Exp R.T.: 6.424 min
 Response: 0
 Conc: N.D.

Instrument :
 ECD_S
 ClientSampleId :
 201-22-(0-1)



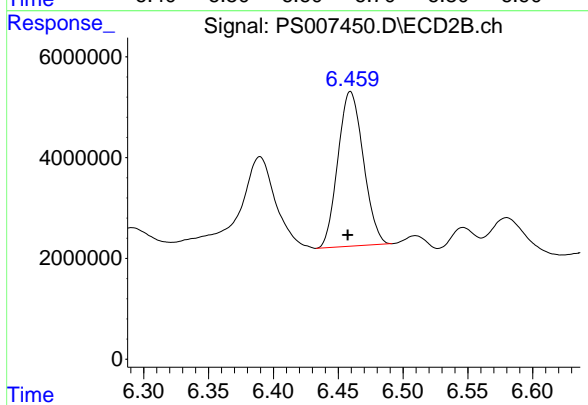
#9 2,4-D

R.T.: 6.080 min
 Delta R.T.: -0.015 min
 Response: 8669528
 Conc: 10.87 ng/ml



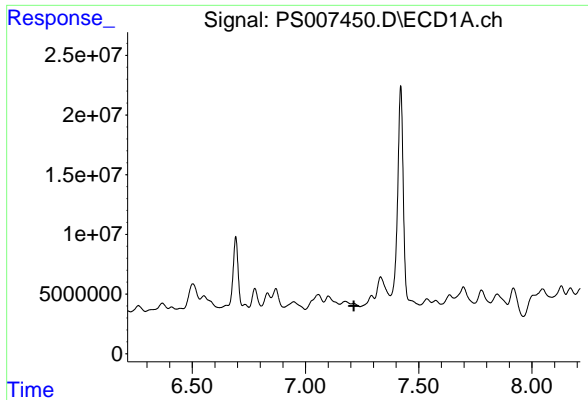
#10 Pentachlorophenol

R.T.: 6.692 min
 Delta R.T.: 0.012 min
 Response: 86044833
 Conc: 4.82 ng/ml



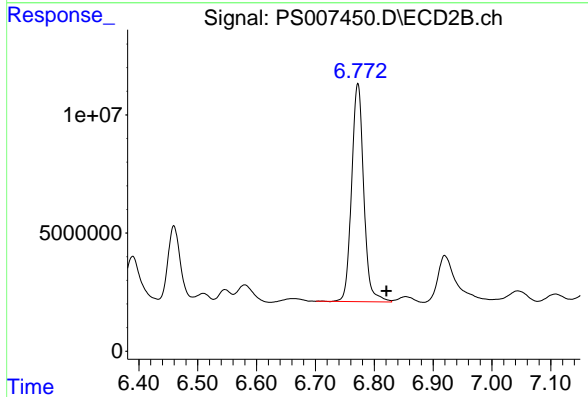
#10 Pentachlorophenol

R.T.: 6.460 min
 Delta R.T.: 0.002 min
 Response: 41869381
 Conc: 4.35 ng/ml

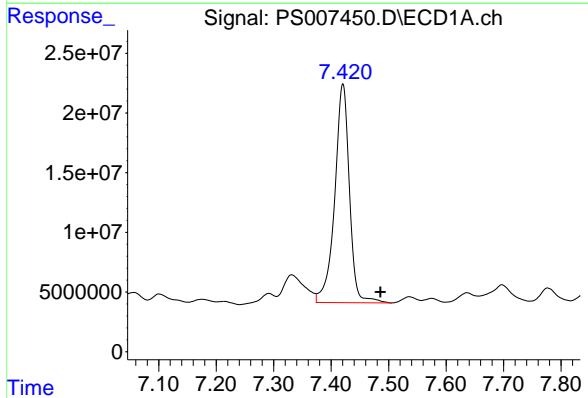


#11 2,4,5-TP (SILVEX)
 R.T.: 0.000 min
 Exp R.T.: 7.214 min
 Response: 0
 Conc: N.D.

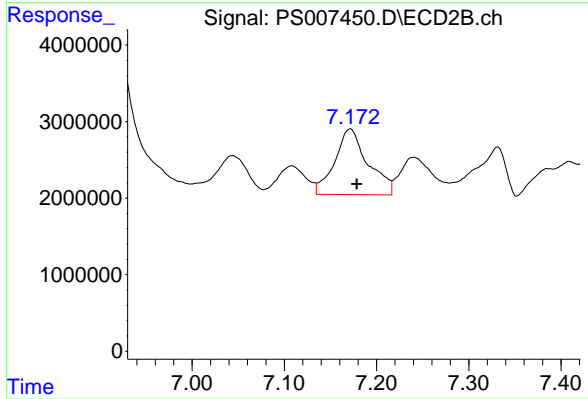
Instrument :
 ECD_S
 ClientSampleId :
 201-22-(0-1)



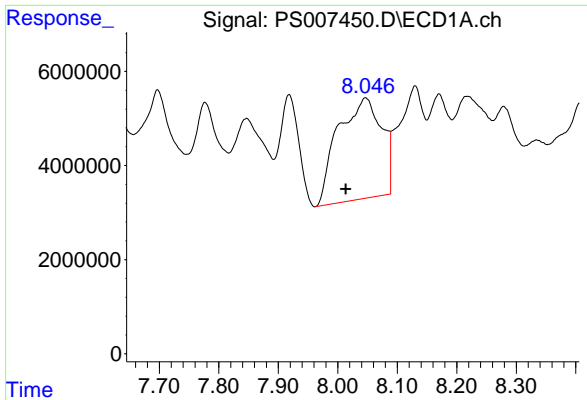
#11 2,4,5-TP (SILVEX)
 R.T.: 6.772 min
 Delta R.T.: -0.048 min
 Response: 131944537
 Conc: 34.69 ng/ml



#12 2,4,5-T
 R.T.: 7.420 min
 Delta R.T.: -0.065 min
 Response: 324891204
 Conc: 42.50 ng/ml



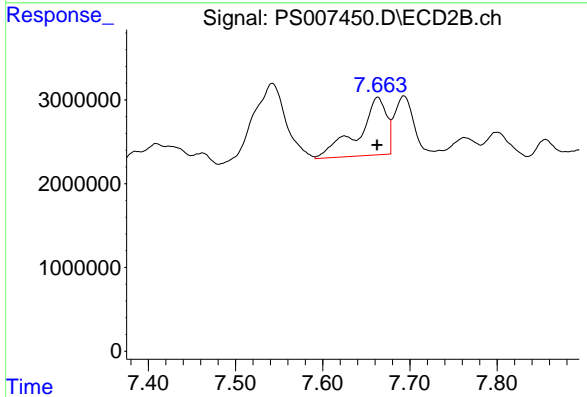
#12 2,4,5-T
 R.T.: 7.171 min
 Delta R.T.: -0.007 min
 Response: 21525626
 Conc: 6.14 ng/ml



#13 2,4-DB

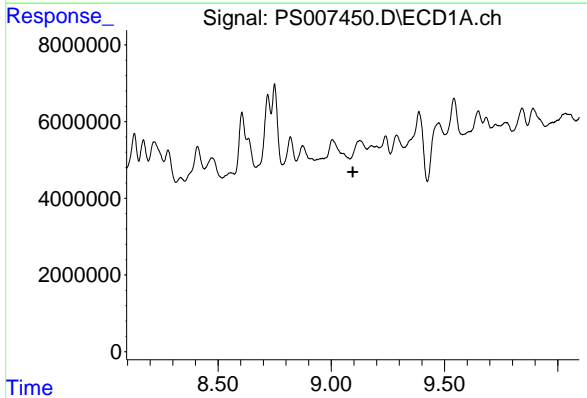
R.T.: 8.047 min
 Delta R.T.: 0.033 min
 Response: 109117668
 Conc: 114.44 ng/ml

Instrument :
 ECD_S
 ClientSampleId :
 201-22-(0-1)



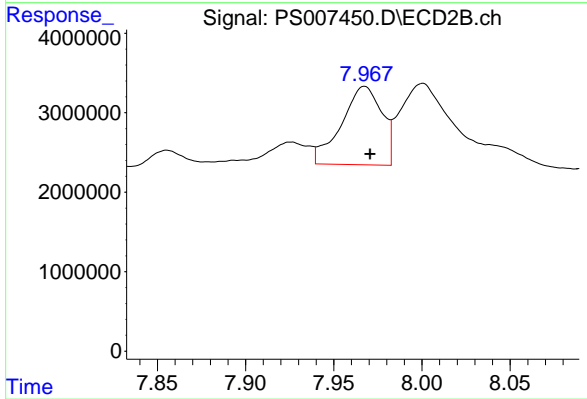
#13 2,4-DB

R.T.: 7.663 min
 Delta R.T.: 0.000 min
 Response: 15404793
 Conc: 32.87 ng/ml



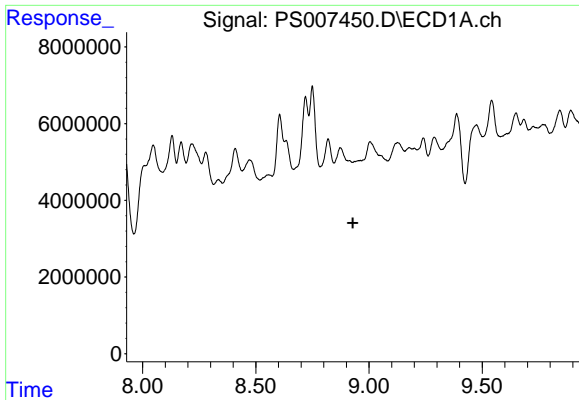
#14 DINOSEB

R.T.: 0.000 min
 Exp R.T. : 9.095 min
 Response: 0
 Conc: N.D.



#14 DINOSEB

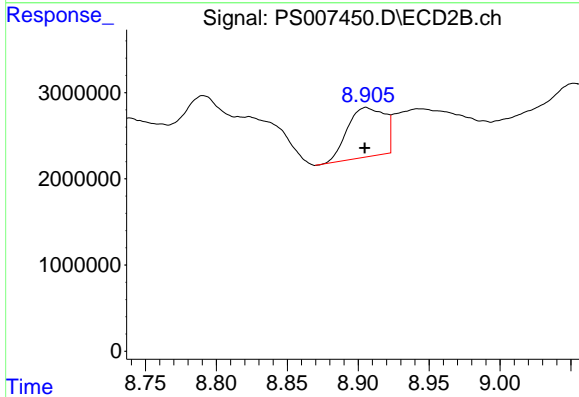
R.T.: 7.967 min
 Delta R.T.: -0.003 min
 Response: 15764778
 Conc: 5.62 ng/ml



#15 Picloram

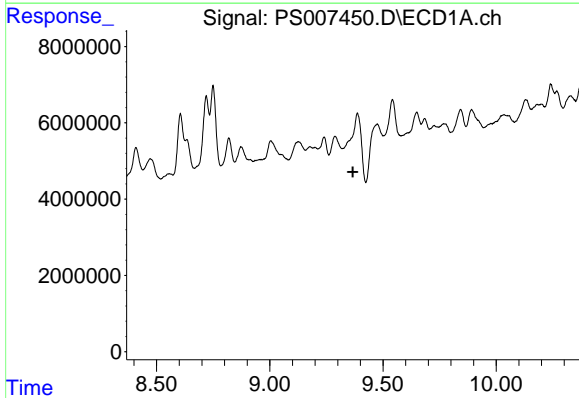
R.T.: 0.000 min
 Exp R.T. : 8.929 min
 Response: 0
 Conc: N.D.

Instrument :
 ECD_S
 ClientSampleId :
 201-22-(0-1)



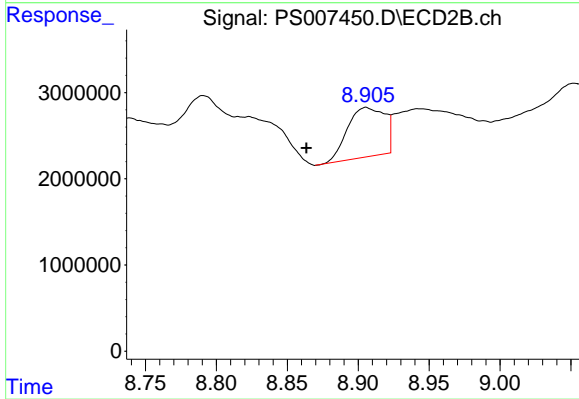
#15 Picloram

R.T.: 8.906 min
 Delta R.T.: 0.001 min
 Response: 10453089
 Conc: 1.70 ng/ml



#16 DCPA

R.T.: 0.000 min
 Exp R.T. : 9.367 min
 Response: 0
 Conc: N.D.



#16 DCPA

R.T.: 8.906 min
 Delta R.T.: 0.042 min
 Response: 10453089
 Conc: 2.08 ng/ml