

Data Path : Z:\pestpcbsrv\HPCHEM1\ECD\_S\Data\PS102919\  
 Data File : PS007458.D  
 Signal(s) : Signal #1: ECD1A.ch Signal #2: ECD2B.ch  
 Acq On : 29 Oct 2019 19:25  
 Operator : SM\AJ  
 Sample : K5140-09MS  
 Misc :  
 ALS Vial : 26 Sample Multiplier: 1

Instrument :  
 ECD\_S  
 ClientSampleId :

Integration File signal 1: autoint1.e  
 Integration File signal 2: autoint2.e  
 Quant Time: Oct 30 03:47:08 2019  
 Quant Method : Z:\pestpcbsrv\HPCHEM1\ECD\_S\Method\PS101419.M  
 Quant Title : 8080.M  
 QLast Update : Mon Oct 14 13:54:23 2019  
 Response via : Initial Calibration  
 Integrator: ChemStation

Volume Inj. : 2 µl  
 Signal #1 Phase : Rtx-CLPesticides Signal #2 Phase: Rtx-CLPesticides2  
 Signal #1 Info : 30M x 0.32mm x0.5 Signal #2 Info : 30M x 0.32mm x 0.25µm

Compound	RT#1	RT#2	Resp#1	Resp#2	ng/ml	ng/ml
System Monitoring Compounds						
4) S 2,4-DCAA	5.472	5.200	499.8E6	245.1E6	365.205	348.532
Target Compounds						
1) T Dalapon	2.053	1.766	954.5E6	533.6E6	570.466	586.378
2) T 3,5-DICHL...	4.847	4.508	1152.5E6	624.4E6	685.836	725.673
3) T 4-Nitroph...	5.322	4.888	419.5E6	220.9E6	698.684	559.421
5) T DICAMBA	5.623	5.325	3120.3E6	1585.7E6	635.065	609.404
6) T MCPP	5.775	5.325	239.9E6	1585.7E6	68.066	835.994 #
7) T MCPA	5.906	5.584	366.6E6	191.3E6	71.073	65.793
8) T DICHLORPROP	6.244	5.851	789.5E6	433.9E6	673.482	666.349
9) T 2,4-D	6.454	6.117	1079.6E6	626.6E6	876.037	785.374
10) T Pentachlo...	6.716	6.482	13359.1E6	6680.6E6	748.317	694.705
11) T 2,4,5-TP ...	7.248	6.844	5186.6E6	2644.4E6	744.161	695.241
12) T 2,4,5-T	7.517	7.201	5482.8E6	2672.6E6	717.192	762.807
13) T 2,4-DB	8.041	7.686	945.8E6	339.7E6	991.996	724.848 #
14) T DINOSEB	9.130	7.996	3852.1E6	1915.5E6	661.961	682.300
15) T Picloram	8.958	8.889	7576.9E6	3514.9E6	686.481	572.451
16) T DCPA	9.403	8.889	6733.6E6	3514.9E6	751.991	700.932

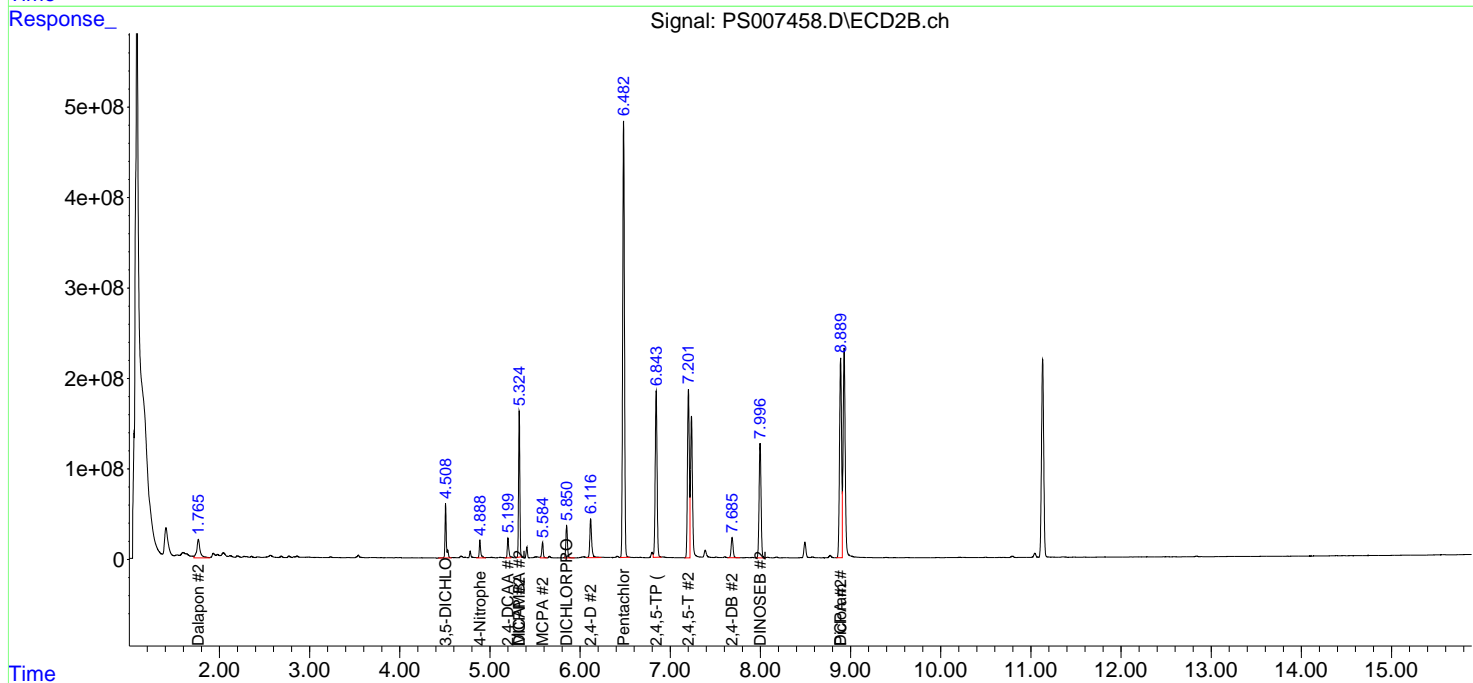
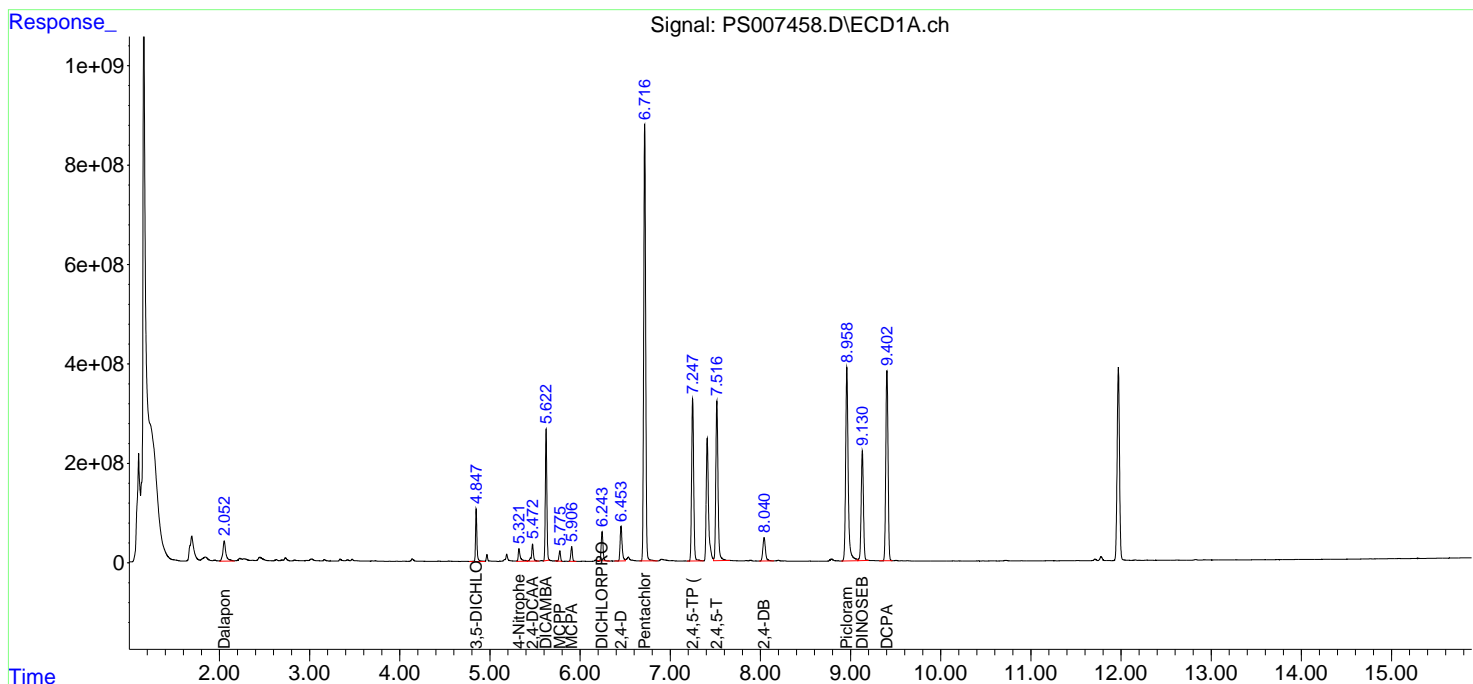
(f)=RT Delta > 1/2 Window (#)=Amounts differ by > 25% (m)=manual int.

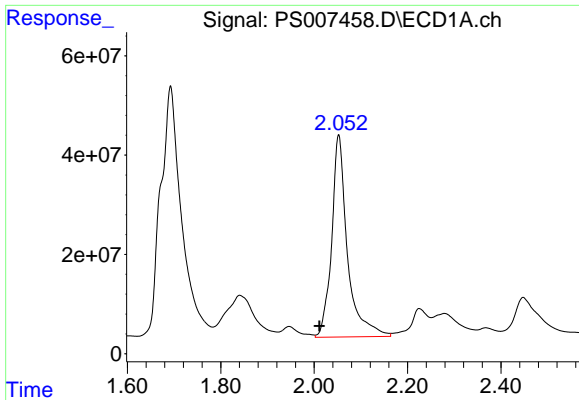
Data Path : Z:\pestpcbsrv\HPCHEM1\ECD\_S\Data\PS102919\  
 Data File : PS007458.D  
 Signal(s) : Signal #1: ECD1A.ch Signal #2: ECD2B.ch  
 Acq On : 29 Oct 2019 19:25  
 Operator : SM\AJ  
 Sample : K5140-09MS  
 Misc :  
 ALS Vial : 26 Sample Multiplier: 1

Instrument :  
 ECD\_S  
 ClientSampled :

Integration File signal 1: autoint1.e  
 Integration File signal 2: autoint2.e  
 Quant Time: Oct 30 03:47:08 2019  
 Quant Method : Z:\pestpcbsrv\HPCHEM1\ECD\_S\Method\PS101419.M  
 Quant Title : 8080.M  
 QLast Update : Mon Oct 14 13:54:23 2019  
 Response via : Initial Calibration  
 Integrator: ChemStation

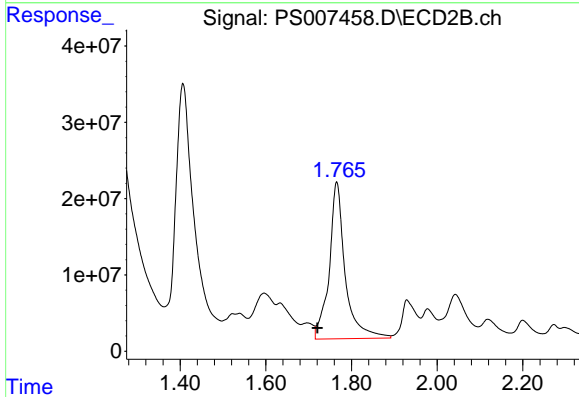
Volume Inj. : 2 µl  
 Signal #1 Phase : Rtx-CLPesticides Signal #2 Phase: Rtx-CLPesticides2  
 Signal #1 Info : 30M x 0.32mm x 0.5 Signal #2 Info : 30M x 0.32mm x 0.25µm



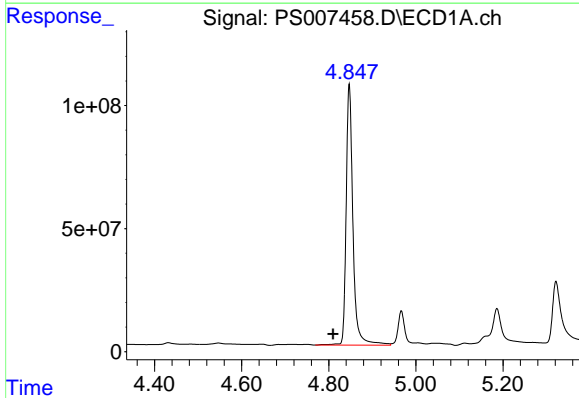


#1 Dalapon  
 R.T.: 2.053 min  
 Delta R.T.: 0.042 min  
 Response: 954549622  
 Conc: 570.47 ng/ml

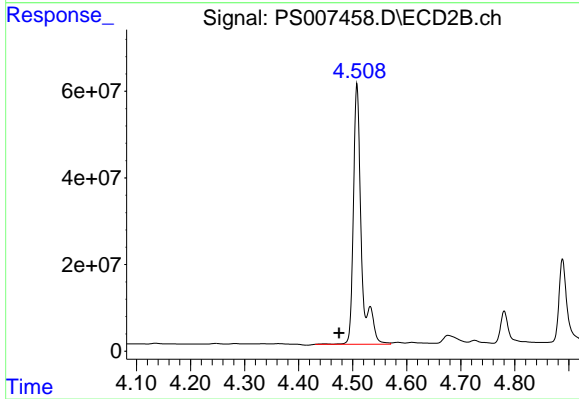
Instrument :  
 ECD\_S  
 ClientSampled :



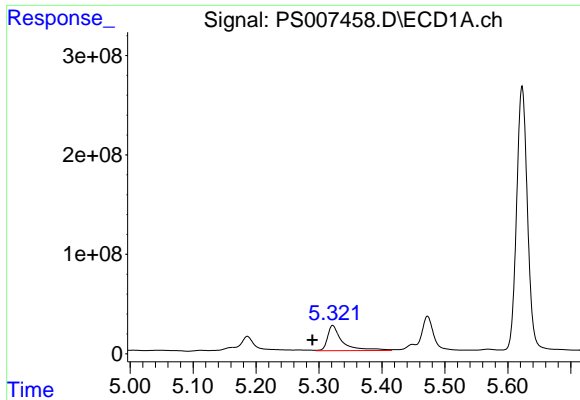
#1 Dalapon  
 R.T.: 1.766 min  
 Delta R.T.: 0.045 min  
 Response: 533606224  
 Conc: 586.38 ng/ml



#2 3,5-DICHLOROBENZOIC ACID  
 R.T.: 4.847 min  
 Delta R.T.: 0.037 min  
 Response: 1152456381  
 Conc: 685.84 ng/ml

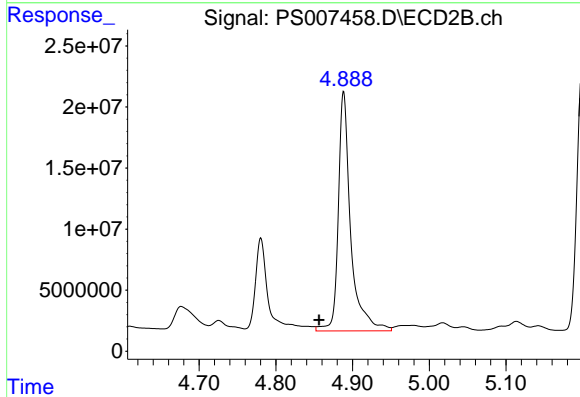


#2 3,5-DICHLOROBENZOIC ACID  
 R.T.: 4.508 min  
 Delta R.T.: 0.033 min  
 Response: 624391835  
 Conc: 725.67 ng/ml

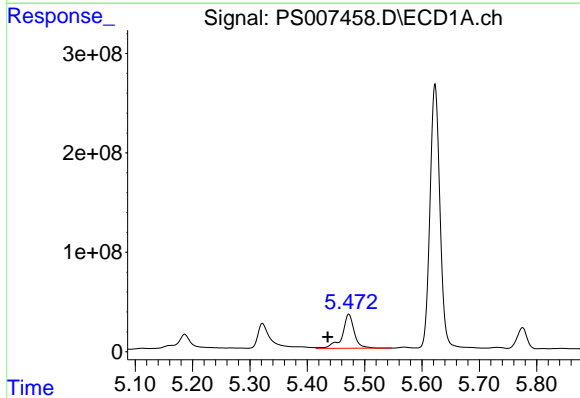


#3 4-Nitrophenol  
R.T.: 5.322 min  
Delta R.T.: 0.032 min  
Response: 419541189  
Conc: 698.68 ng/ml

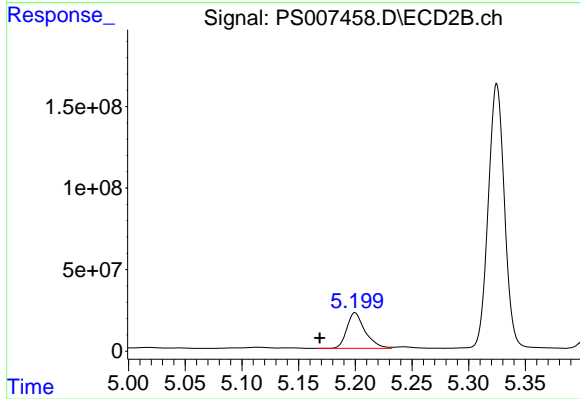
Instrument :  
ECD\_S  
ClientSampled :



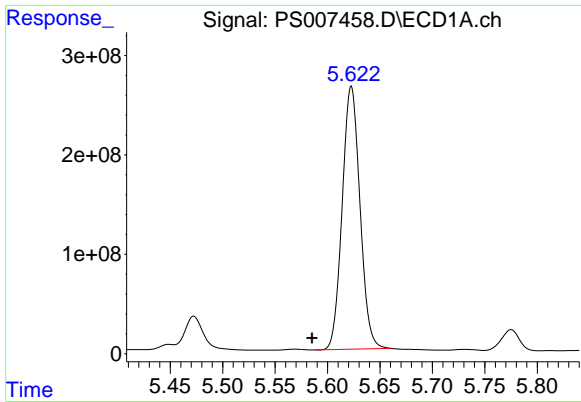
#3 4-Nitrophenol  
R.T.: 4.888 min  
Delta R.T.: 0.032 min  
Response: 220912531  
Conc: 559.42 ng/ml



#4 2,4-DCAA  
R.T.: 5.472 min  
Delta R.T.: 0.037 min  
Response: 499844185  
Conc: 365.20 ng/ml



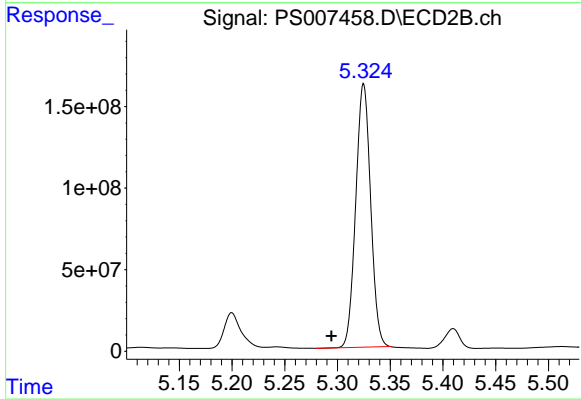
#4 2,4-DCAA  
R.T.: 5.200 min  
Delta R.T.: 0.031 min  
Response: 245124724  
Conc: 348.53 ng/ml



#5 DICAMBA

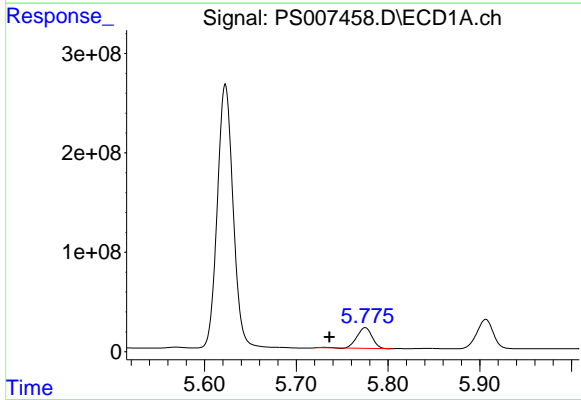
R.T.: 5.623 min  
 Delta R.T.: 0.037 min  
 Response: 3120334200  
 Conc: 635.07 ng/ml

Instrument :  
 ECD\_S  
 ClientSampleId :



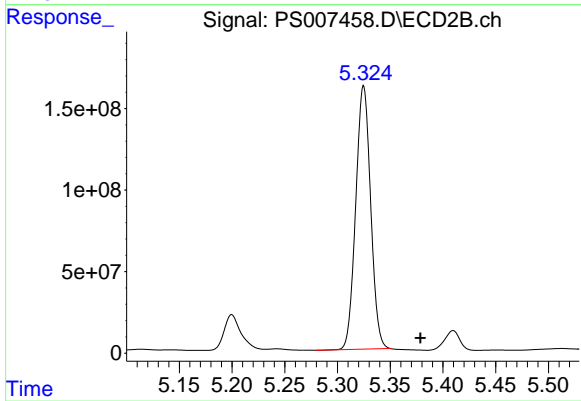
#5 DICAMBA

R.T.: 5.325 min  
 Delta R.T.: 0.030 min  
 Response: 1585732705  
 Conc: 609.40 ng/ml



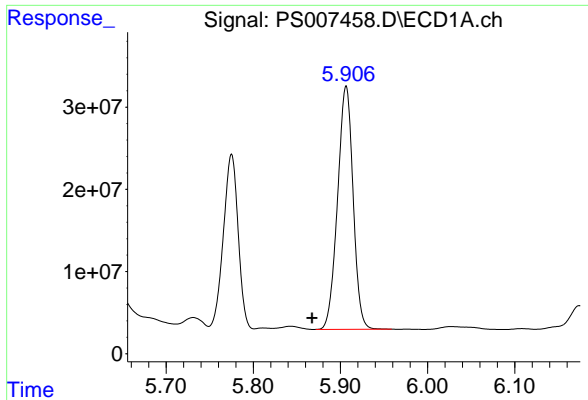
#6 MCPP

R.T.: 5.775 min  
 Delta R.T.: 0.039 min  
 Response: 239906479  
 Conc: 68.07 ug/ml



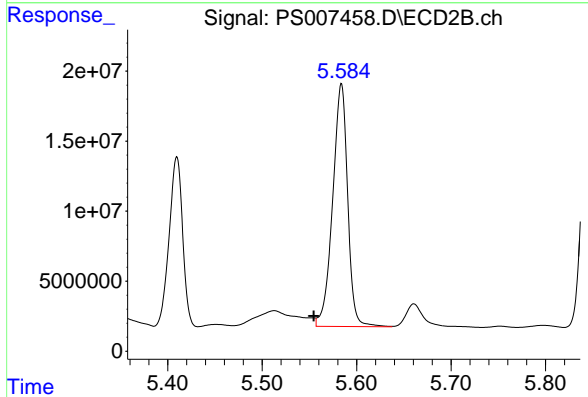
#6 MCPP

R.T.: 5.325 min  
 Delta R.T.: -0.054 min  
 Response: 1585732705  
 Conc: 835.99 ug/ml

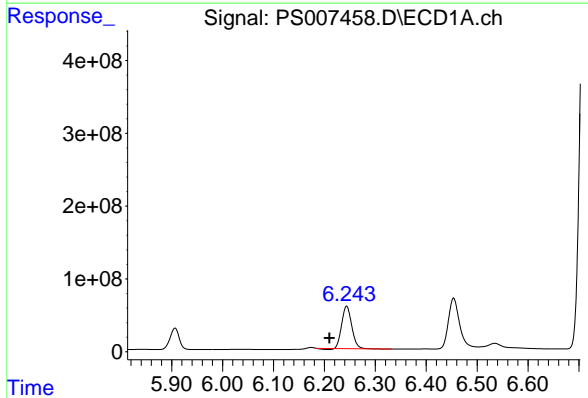


#7 MCPA  
 R.T.: 5.906 min  
 Delta R.T.: 0.039 min  
 Response: 366584607  
 Conc: 71.07 ug/ml

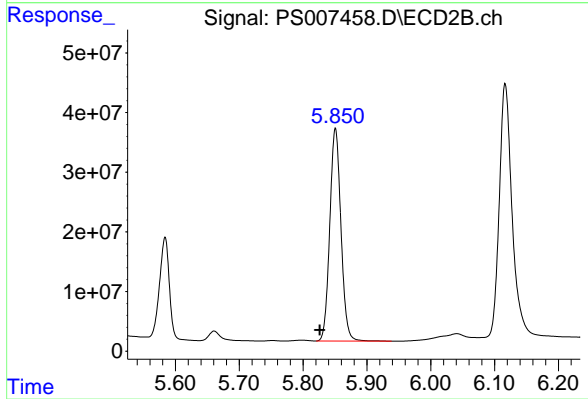
Instrument :  
 ECD\_S  
 ClientSampled :



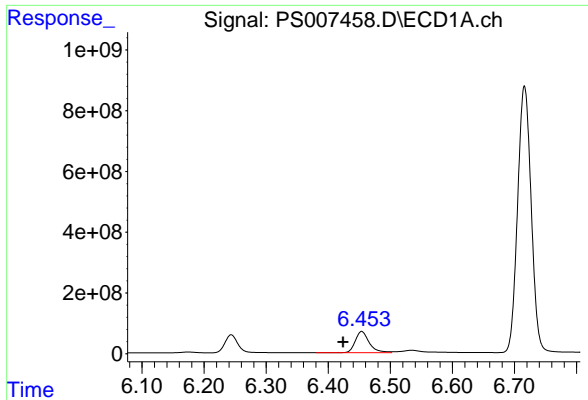
#7 MCPA  
 R.T.: 5.584 min  
 Delta R.T.: 0.029 min  
 Response: 191267410  
 Conc: 65.79 ug/ml



#8 DICHLORPROP  
 R.T.: 6.244 min  
 Delta R.T.: 0.034 min  
 Response: 789475470  
 Conc: 673.48 ng/ml



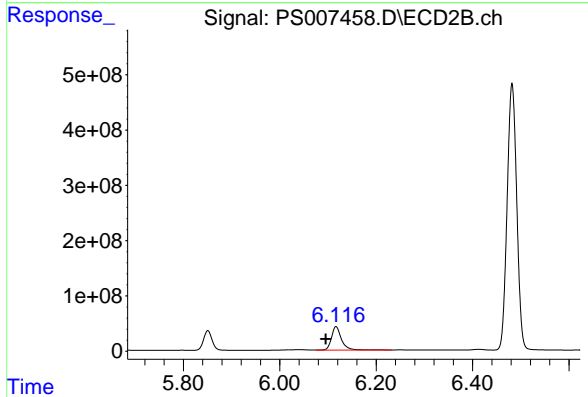
#8 DICHLORPROP  
 R.T.: 5.851 min  
 Delta R.T.: 0.024 min  
 Response: 433937582  
 Conc: 666.35 ng/ml



#9 2,4-D

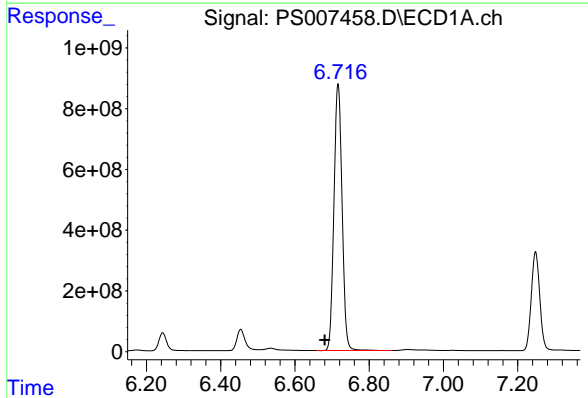
R.T.: 6.454 min  
Delta R.T.: 0.030 min  
Response: 1079577391  
Conc: 876.04 ng/ml

Instrument :  
ECD\_S  
ClientSampleId :



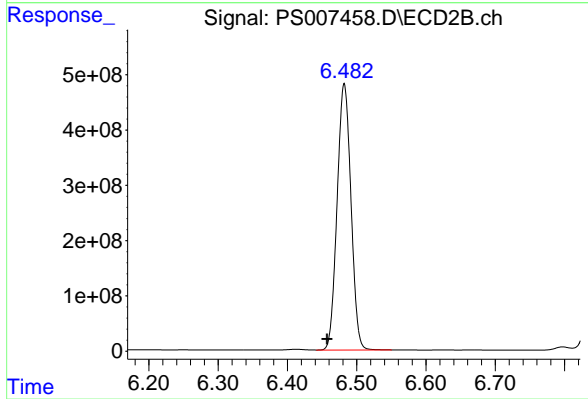
#9 2,4-D

R.T.: 6.117 min  
Delta R.T.: 0.021 min  
Response: 626568045  
Conc: 785.37 ng/ml



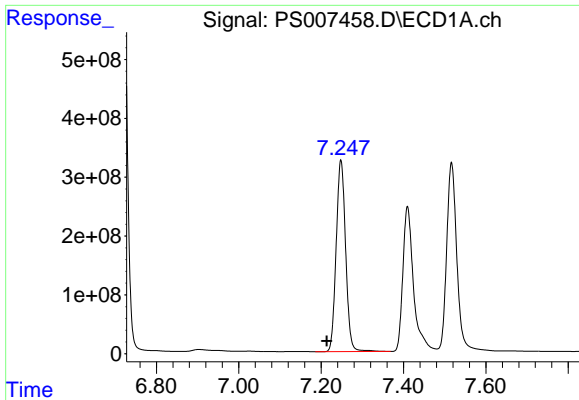
#10 Pentachlorophenol

R.T.: 6.716 min  
Delta R.T.: 0.036 min  
Response: 13359077866  
Conc: 748.32 ng/ml



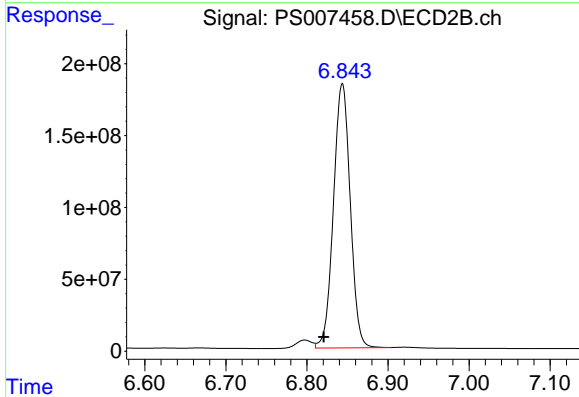
#10 Pentachlorophenol

R.T.: 6.482 min  
Delta R.T.: 0.025 min  
Response: 6680555083  
Conc: 694.70 ng/ml

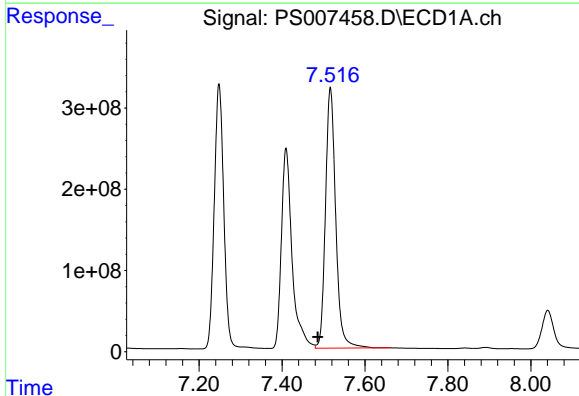


#11 2,4,5-TP (SILVEX)  
 R.T.: 7.248 min  
 Delta R.T.: 0.034 min  
 Response: 5186564562  
 Conc: 744.16 ng/ml

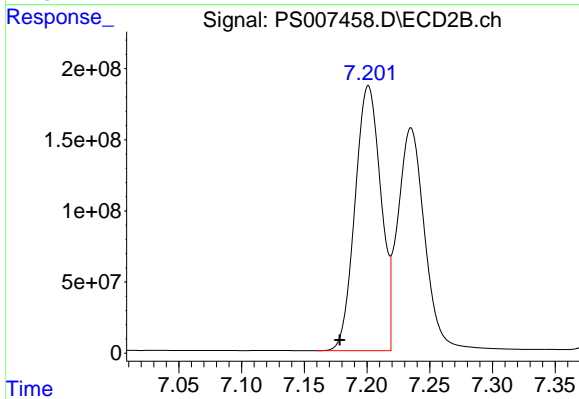
Instrument :  
 ECD\_S  
 ClientSampleId :



#11 2,4,5-TP (SILVEX)  
 R.T.: 6.844 min  
 Delta R.T.: 0.023 min  
 Response: 2644425965  
 Conc: 695.24 ng/ml

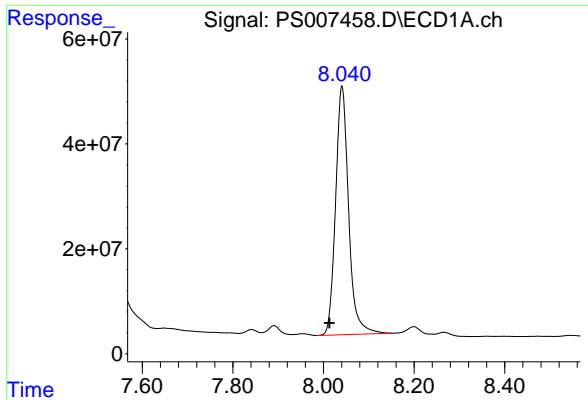


#12 2,4,5-T  
 R.T.: 7.517 min  
 Delta R.T.: 0.031 min  
 Response: 5482755605  
 Conc: 717.19 ng/ml



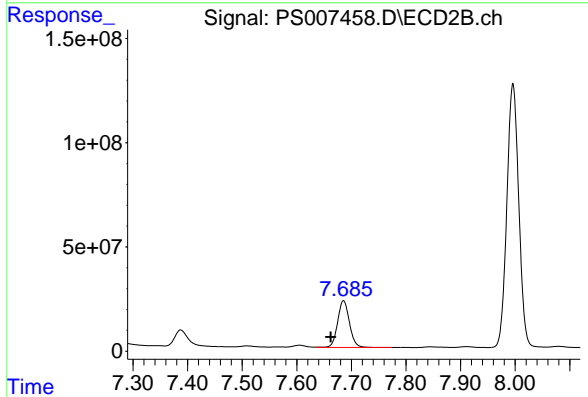
#12 2,4,5-T  
 R.T.: 7.201 min  
 Delta R.T.: 0.023 min  
 Response: 2672594418  
 Conc: 762.81 ng/ml



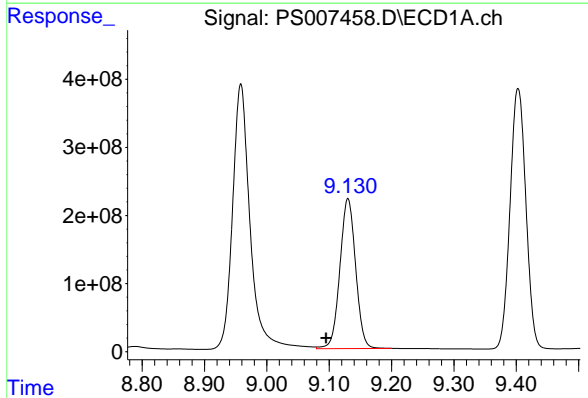


#13 2,4-DB  
 R.T.: 8.041 min  
 Delta R.T.: 0.027 min  
 Response: 945830132  
 Conc: 992.00 ng/ml

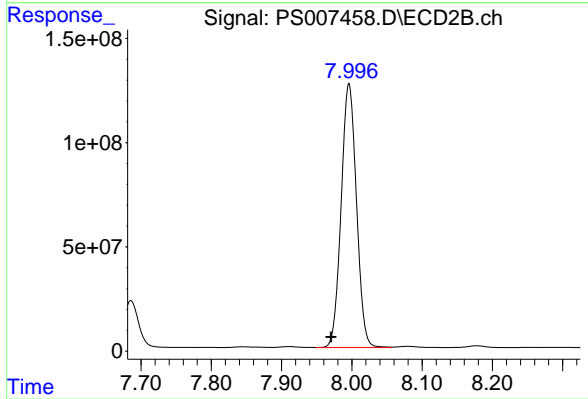
Instrument :  
 ECD\_S  
 ClientSampleId :



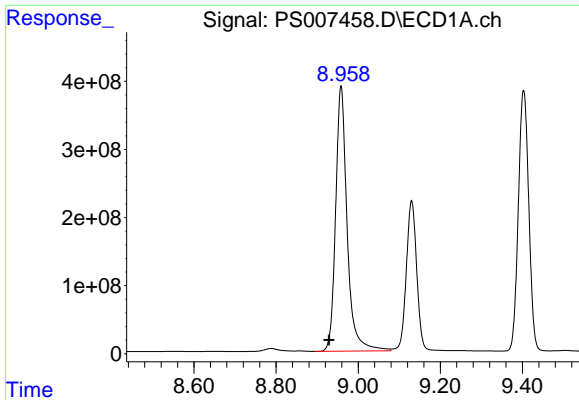
#13 2,4-DB  
 R.T.: 7.686 min  
 Delta R.T.: 0.023 min  
 Response: 339733643  
 Conc: 724.85 ng/ml



#14 DINOSEB  
 R.T.: 9.130 min  
 Delta R.T.: 0.035 min  
 Response: 3852071782  
 Conc: 661.96 ng/ml

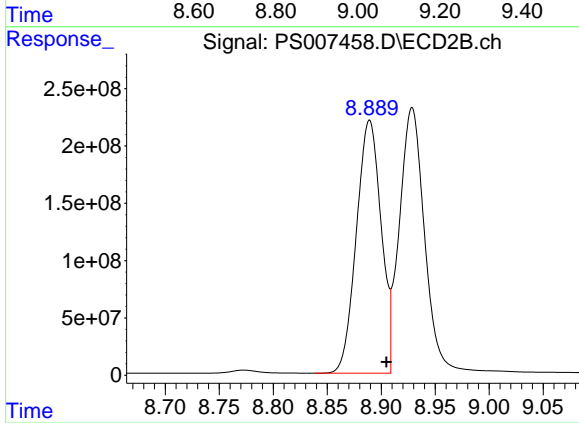


#14 DINOSEB  
 R.T.: 7.996 min  
 Delta R.T.: 0.025 min  
 Response: 1915462795  
 Conc: 682.30 ng/ml

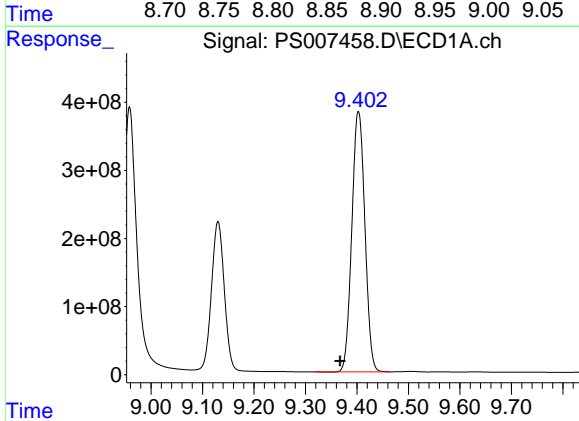


#15 Picloram  
 R.T.: 8.958 min  
 Delta R.T.: 0.029 min  
 Response: 7576893026  
 Conc: 686.48 ng/ml

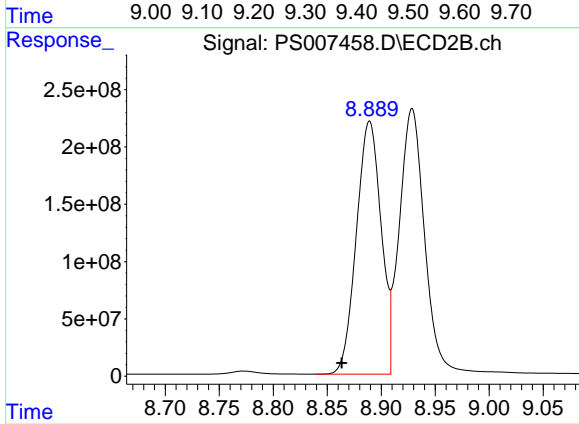
Instrument :  
 ECD\_S  
 ClientSampleId :



#15 Picloram  
 R.T.: 8.889 min  
 Delta R.T.: -0.016 min  
 Response: 3514935189  
 Conc: 572.45 ng/ml



#16 DCPA  
 R.T.: 9.403 min  
 Delta R.T.: 0.036 min  
 Response: 6733560380  
 Conc: 751.99 ng/ml



#16 DCPA  
 R.T.: 8.889 min  
 Delta R.T.: 0.026 min  
 Response: 3514935189  
 Conc: 700.93 ng/ml