

Data Path : Z:\pestpcbsrv\HPCHEM1\ECD_S\Data\PS102919\
 Data File : PS007476.D
 Signal(s) : Signal #1: ECD1A.ch Signal #2: ECD2B.ch
 Acq On : 30 Oct 2019 02:00
 Operator : SM\AJ
 Sample : K5587-09
 Misc :
 ALS Vial : 42 Sample Multiplier: 1

Instrument :
 ECD_S
 ClientSampleId :

Integration File signal 1: autoint1.e
 Integration File signal 2: autoint2.e
 Quant Time: Oct 30 03:54:35 2019
 Quant Method : Z:\pestpcbsrv\HPCHEM1\ECD_S\Method\PS101419.M
 Quant Title : 8080.M
 QLast Update : Mon Oct 14 13:54:23 2019
 Response via : Initial Calibration
 Integrator: ChemStation

Volume Inj. : 2 µl
 Signal #1 Phase : Rtx-CLPesticides Signal #2 Phase: Rtx-CLPesticides2
 Signal #1 Info : 30M x 0.32mm x0.5 Signal #2 Info : 30M x 0.32mm x 0.25µm

Compound	RT#1	RT#2	Resp#1	Resp#2	ng/ml	ng/ml
System Monitoring Compounds						
4) S 2,4-DCAA	5.449	5.176	475.0E6	266.6E6	347.071	378.999
Target Compounds						
1) T Dalapon	2.010	1.722	57263612	73265166	34.222	80.511 #
2) T 3,5-DICHL...	0.000	4.469	0	4234917	N.D.	4.922
3) T 4-Nitroph...	0.000	4.854	0	19558354	N.D.	49.528
7) T MCPA	0.000	5.488	0	44016037	N.D.	15.141
10) T Pentachlo...	0.000	6.469	0	7898260	N.D.	<MDL
11) T 2,4,5-TP ...	0.000	6.773	0	95669659	N.D.	25.152
12) T 2,4,5-T	7.420	0.000	232.8E6	0	30.455	N.D. #

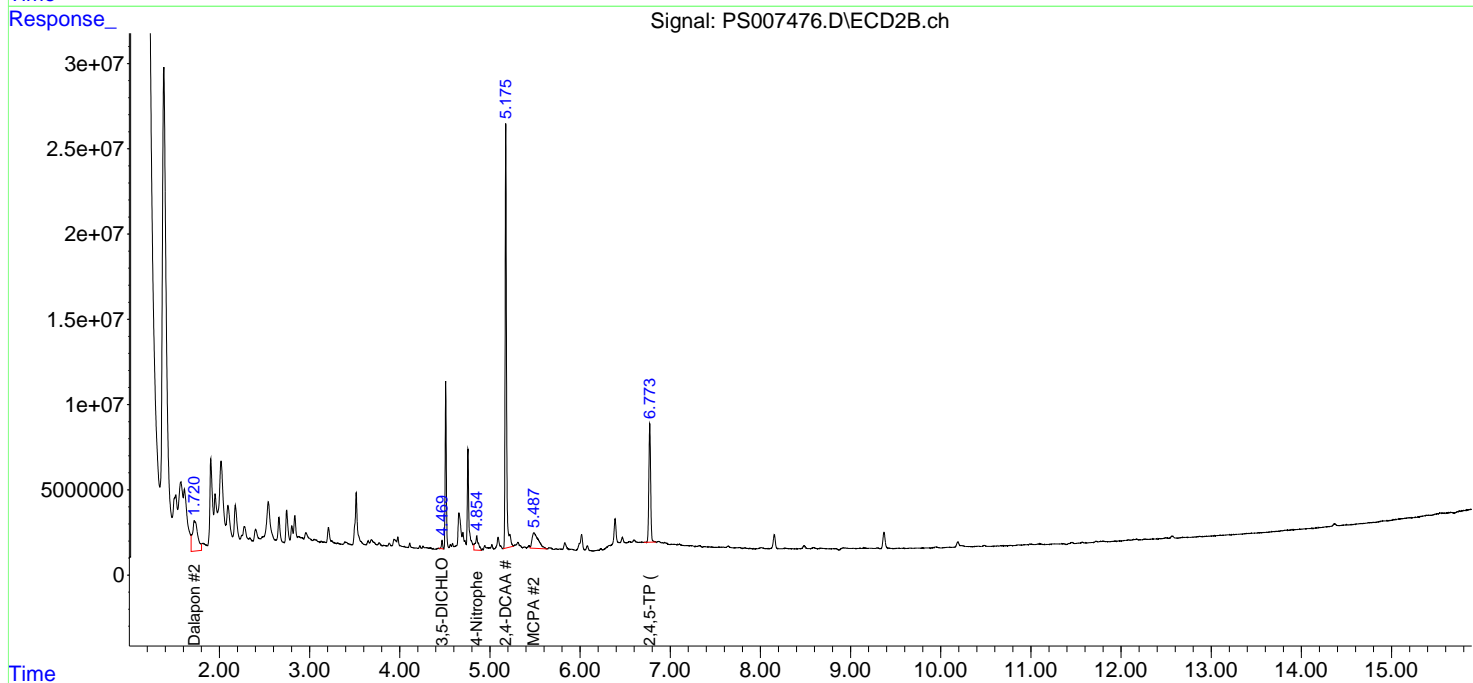
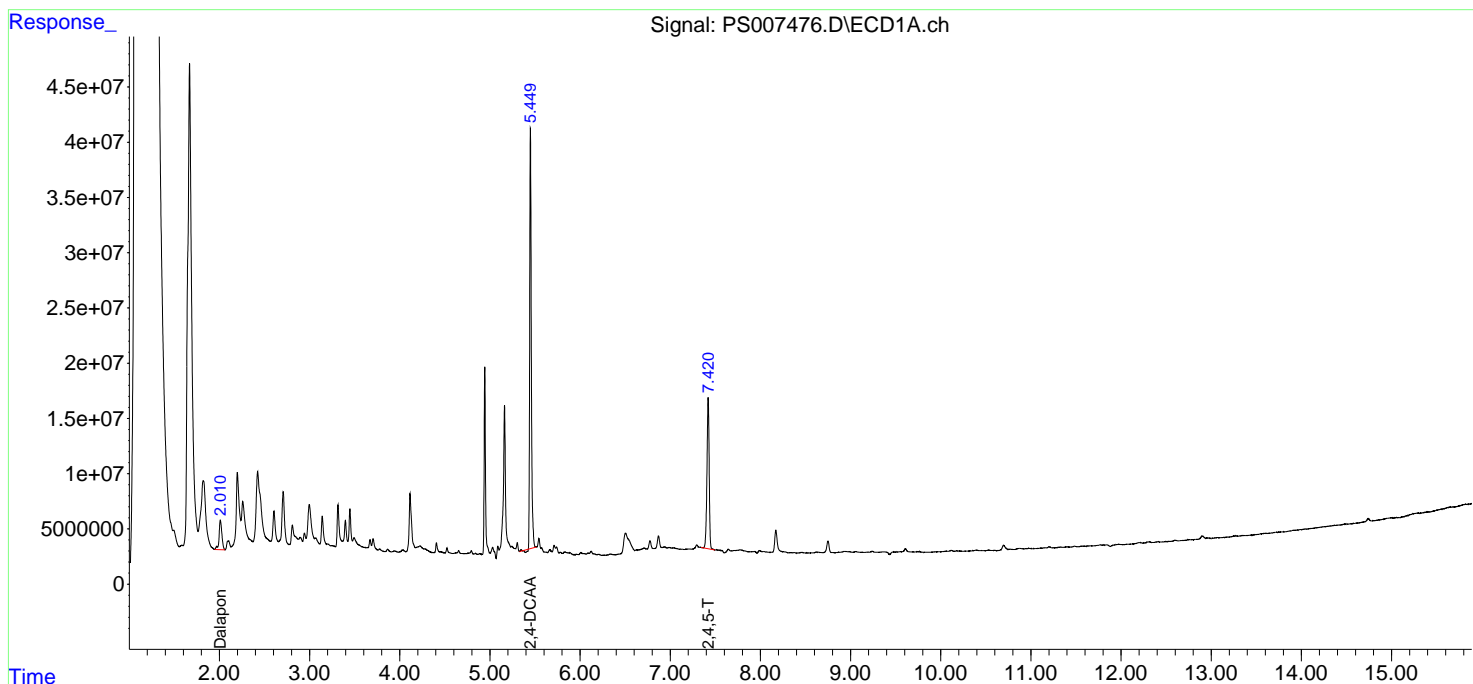
(f)=RT Delta > 1/2 Window (#)=Amounts differ by > 25% (m)=manual int.

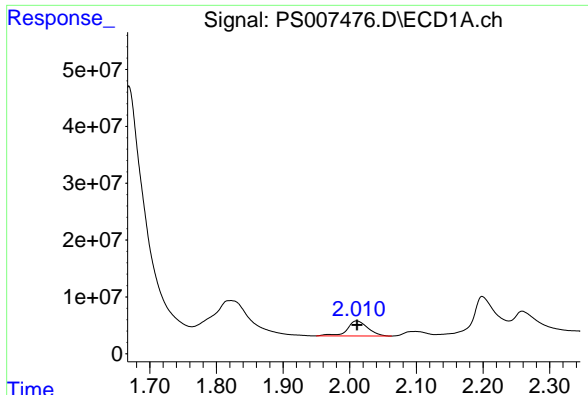
Data Path : Z:\pestpcbsrv\HPCHEM1\ECD_S\Data\PS102919\
 Data File : PS007476.D
 Signal(s) : Signal #1: ECD1A.ch Signal #2: ECD2B.ch
 Acq On : 30 Oct 2019 02:00
 Operator : SM\AJ
 Sample : K5587-09
 Misc :
 ALS Vial : 42 Sample Multiplier: 1

Instrument :
 ECD_S
 ClientSampled :

Integration File signal 1: autoint1.e
 Integration File signal 2: autoint2.e
 Quant Time: Oct 30 03:54:35 2019
 Quant Method : Z:\pestpcbsrv\HPCHEM1\ECD_S\Method\PS101419.M
 Quant Title : 8080.M
 QLast Update : Mon Oct 14 13:54:23 2019
 Response via : Initial Calibration
 Integrator: ChemStation

Volume Inj. : 2 µl
 Signal #1 Phase : Rtx-CLPesticides Signal #2 Phase: Rtx-CLPesticides2
 Signal #1 Info : 30M x 0.32mm x 0.5 Signal #2 Info : 30M x 0.32mm x 0.25µm

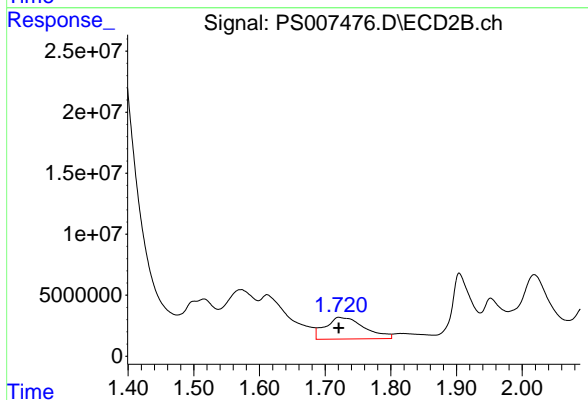




#1 Dalapon

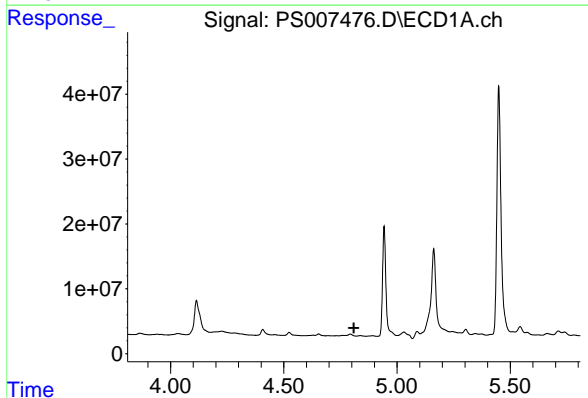
R.T.: 2.010 min
 Delta R.T.: 0.000 min
 Response: 57263612
 Conc: 34.22 ng/ml

Instrument :
 ECD_S
 ClientSampled :



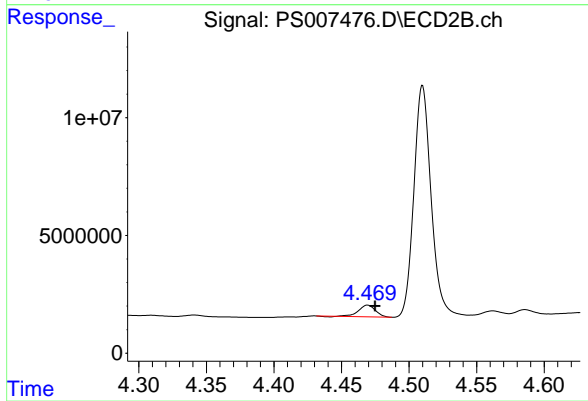
#1 Dalapon

R.T.: 1.722 min
 Delta R.T.: 0.001 min
 Response: 73265166
 Conc: 80.51 ng/ml



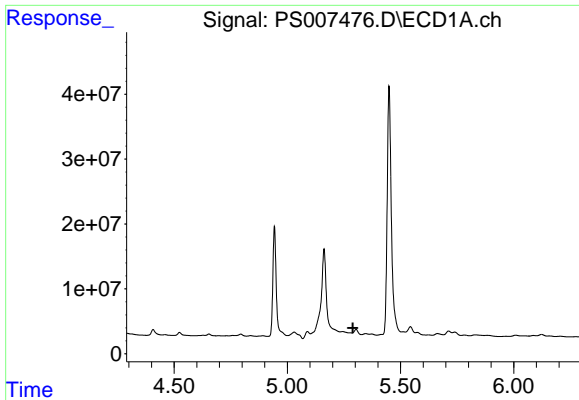
#2 3,5-DICHLOROBENZOIC ACID

R.T.: 0.000 min
 Exp R.T. : 4.810 min
 Response: 0
 Conc: N.D.



#2 3,5-DICHLOROBENZOIC ACID

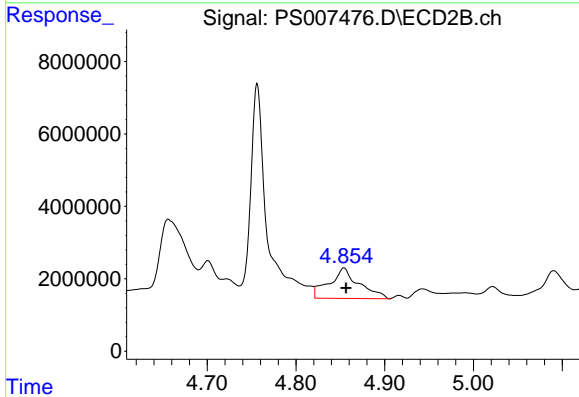
R.T.: 4.469 min
 Delta R.T.: -0.005 min
 Response: 4234917
 Conc: 4.92 ng/ml



#3 4-Nitrophenol

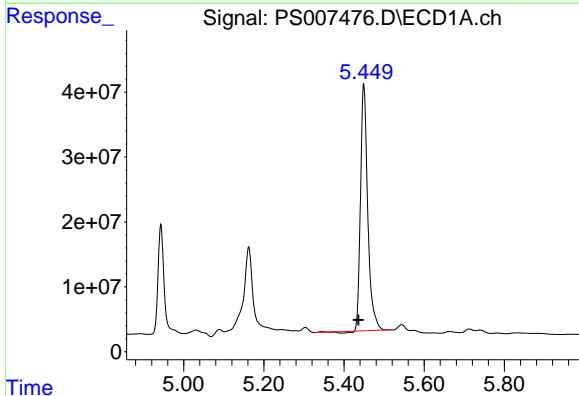
R.T.: 0.000 min
 Exp R.T.: 5.290 min
 Response: 0
 Conc: N.D.

Instrument :
 ECD_S
 ClientSampled :



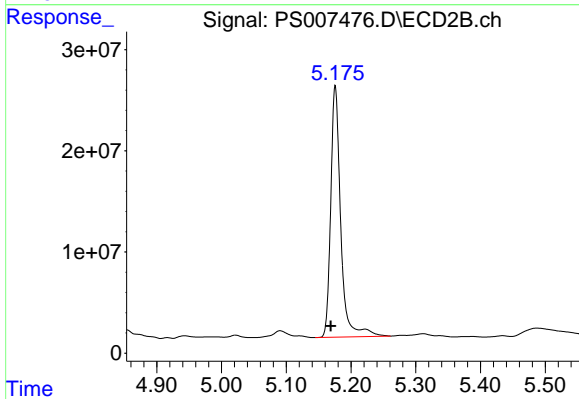
#3 4-Nitrophenol

R.T.: 4.854 min
 Delta R.T.: -0.002 min
 Response: 19558354
 Conc: 49.53 ng/ml



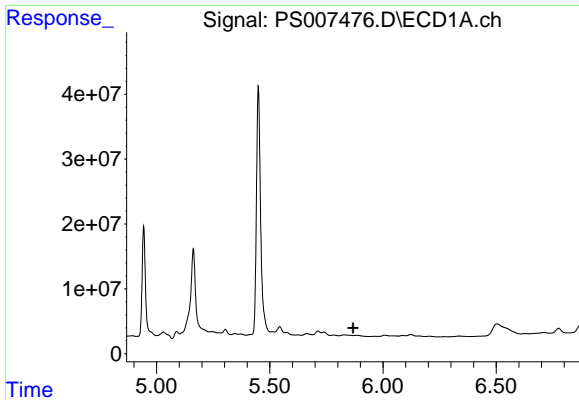
#4 2,4-DCAA

R.T.: 5.449 min
 Delta R.T.: 0.014 min
 Response: 475025446
 Conc: 347.07 ng/ml



#4 2,4-DCAA

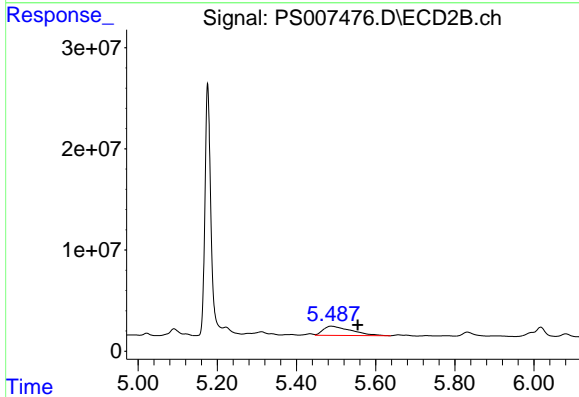
R.T.: 5.176 min
 Delta R.T.: 0.007 min
 Response: 266552697
 Conc: 379.00 ng/ml



#7 MCPA

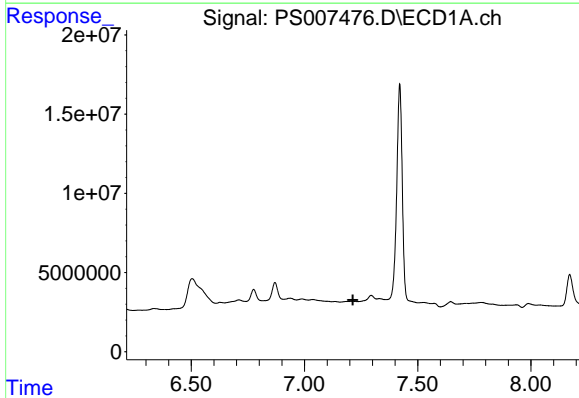
R.T.: 0.000 min
 Exp R.T.: 5.867 min
 Response: 0
 Conc: N.D.

Instrument :
 ECD_S
 ClientSampleId :



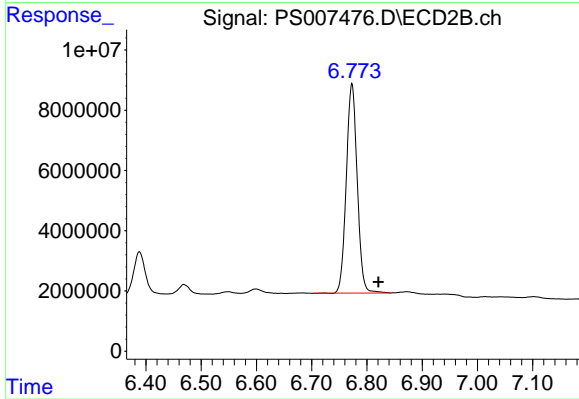
#7 MCPA

R.T.: 5.488 min
 Delta R.T.: -0.067 min
 Response: 44016037
 Conc: 15.14 ug/ml



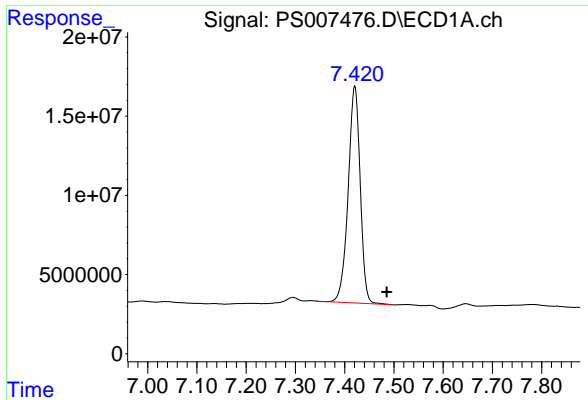
#11 2,4,5-TP (SILVEX)

R.T.: 0.000 min
 Exp R.T.: 7.214 min
 Response: 0
 Conc: N.D.



#11 2,4,5-TP (SILVEX)

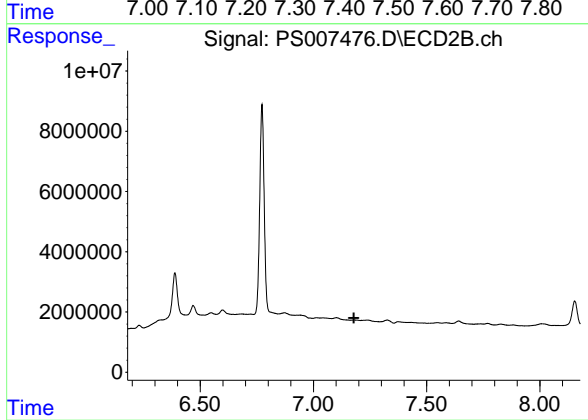
R.T.: 6.773 min
 Delta R.T.: -0.048 min
 Response: 95669659
 Conc: 25.15 ng/ml



#12 2,4,5-T

R.T.: 7.420 min
Delta R.T.: -0.065 min
Response: 232822325
Conc: 30.46 ng/ml

Instrument :
ECD_S
ClientSampleId :



#12 2,4,5-T

R.T.: 0.000 min
Exp R.T. : 7.178 min
Response: 0
Conc: N.D.