

Data Path : Z:\pestpcbsrv\HPCHEM1\ECD\_S\Data\PS102919\  
 Data File : PS007463.D  
 Signal(s) : Signal #1: ECD1A.ch Signal #2: ECD2B.ch  
 Acq On : 29 Oct 2019 21:15  
 Operator : SM\AJ  
 Sample : K5568-02  
 Misc :  
 ALS Vial : 31 Sample Multiplier: 1

Instrument :  
 ECD\_S  
 ClientSampleId :  
 IDW-SOIL-102519

Integration File signal 1: autoint1.e  
 Integration File signal 2: autoint2.e  
 Quant Time: Oct 30 03:48:41 2019  
 Quant Method : Z:\pestpcbsrv\HPCHEM1\ECD\_S\Method\PS101419.M  
 Quant Title : 8080.M  
 QLast Update : Mon Oct 14 13:54:23 2019  
 Response via : Initial Calibration  
 Integrator: ChemStation

Volume Inj. : 2 µl  
 Signal #1 Phase : Rtx-CLPesticides Signal #2 Phase: Rtx-CLPesticides2  
 Signal #1 Info : 30M x 0.32mm x 0.5 Signal #2 Info : 30M x 0.32mm x 0.25µm

Compound	RT#1	RT#2	Resp#1	Resp#2	ng/ml	ng/ml
----------	------	------	--------	--------	-------	-------

-----  
 System Monitoring Compounds

4) S	2,4-DCAA	5.435	5.161	377.1E6	196.7E6	275.526	279.674
------	----------	-------	-------	---------	---------	---------	---------

Target Compounds  
 -----

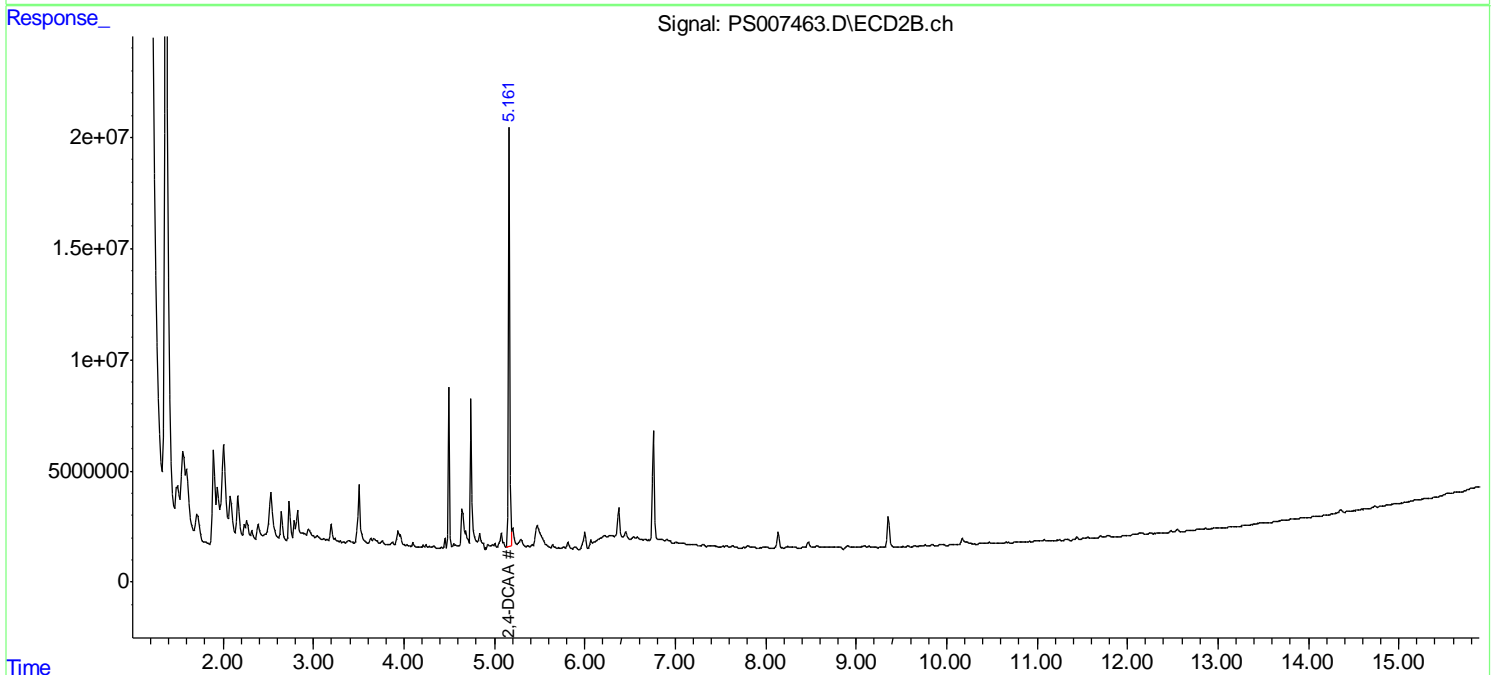
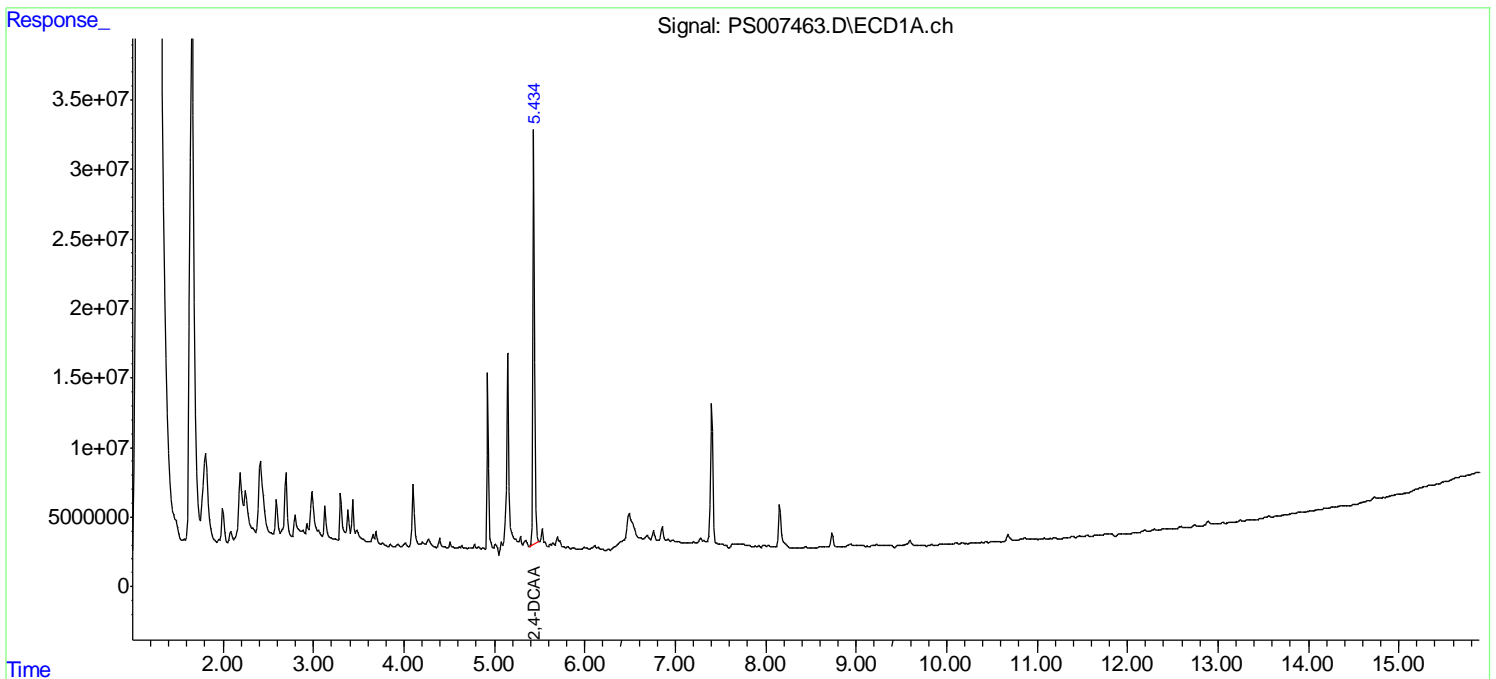
(f)=RT Delta > 1/2 Window (#)=Amounts differ by > 25% (m)=manual int.

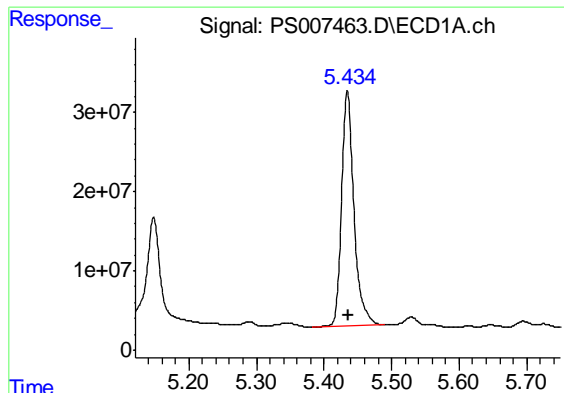
Data Path : Z:\pestpcbsrv\HPCHEM1\ECD\_S\Data\PS102919\  
 Data File : PS007463.D  
 Signal(s) : Signal #1: ECD1A.ch Signal #2: ECD2B.ch  
 Acq On : 29 Oct 2019 21:15  
 Operator : SM\AJ  
 Sample : K5568-02  
 Misc :  
 ALS Vial : 31 Sample Multiplier: 1

Instrument :  
 ECD\_S  
 ClientSampleId :  
 IDW-SOIL-102519

Integration File signal 1: autoint1.e  
 Integration File signal 2: autoint2.e  
 Quant Time: Oct 30 03:48:41 2019  
 Quant Method : Z:\pestpcbsrv\HPCHEM1\ECD\_S\Method\PS101419.M  
 Quant Title : 8080.M  
 QLast Update : Mon Oct 14 13:54:23 2019  
 Response via : Initial Calibration  
 Integrator: ChemStation

Volume Inj. : 2 µl  
 Signal #1 Phase : Rtx-CLPesticides Signal #2 Phase: Rtx-CLPesticides2  
 Signal #1 Info : 30M x 0.32mm x0.5 Signal #2 Info : 30M x 0.32mm x 0.25µm

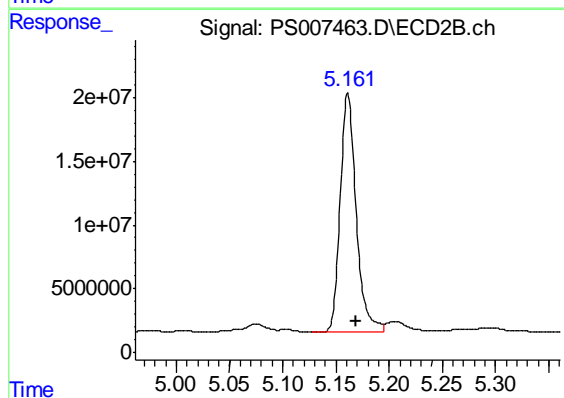




#4 2,4-DCAA

R.T.: 5.435 min  
Delta R.T.: -0.001 min  
Response: 377103980  
Conc: 275.53 ng/ml

Instrument :  
ECD\_S  
ClientSampleId :  
IDW-SOIL-102519



#4 2,4-DCAA

R.T.: 5.161 min  
Delta R.T.: -0.007 min  
Response: 196696763  
Conc: 279.67 ng/ml