

Data Path : Z:\pestpcbsrv\HPCHEM1\ECD_S\Data\PS102921\
 Data File : PS017278.D
 Signal(s) : Signal #1: ECD1A.ch Signal #2: ECD2B.ch
 Acq On : 29 Oct 2021 13:14
 Operator : DD\AJ
 Sample : HSTDCCC750
 Misc :
 ALS Vial : 3 Sample Multiplier: 1

Instrument :
 ECD_S
 ClientSampleId :

Integration File signal 1: autoint1.e
 Integration File signal 2: autoint2.e
 Quant Time: Oct 29 23:41:24 2021
 Quant Method : Z:\pestpcbsrv\HPCHEM1\ECD_S\Method\PS101821.M
 Quant Title : 8080.M
 QLast Update : Tue Oct 19 01:21:46 2021
 Response via : Initial Calibration
 Integrator: ChemStation

Volume Inj. : 2 µl
 Signal #1 Phase : Rtx-CLPesticides Signal #2 Phase: Rtx-CLPesticides2
 Signal #1 Info : 30M x 0.32mm x0.5 Signal #2 Info : 30M x 0.32mm x 0.25µm

	Compound	RT#1	RT#2	Resp#1	Resp#2	ng/ml	ng/ml

System Monitoring Compounds							
4) S	2,4-DCAA	7.151	6.737	1115.1E6	434.6E6	729.552	743.647
Target Compounds							
1) T	Dalapon	2.988	2.494	1463.2E6	444.8E6	673.830	687.452
2) T	3,5-DICHL...	6.375	5.935	1477.3E6	607.8E6	684.361	699.801
3) T	4-Nitroph...	6.981	6.362	556.7E6	207.4E6	638.283	643.276
5) T	DICAMBA	7.340	6.898	4193.3E6	1804.1E6	700.078	708.581
6) T	MCP P	7.509	6.994	318.5E6	145.4E6	71.240	72.182
7) T	MCPA	7.657	7.206	441.9E6	197.6E6	71.628	66.754
8) T	DICHLORPROP	8.031	7.514	1044.3E6	457.7E6	696.510	711.772
9) T	2,4-D	8.260	7.805	1224.8E6	534.9E6	691.490	710.727
10) T	Pentachlo...	8.564	8.229	14741.9E6	5880.9E6	710.520	720.287
11) T	2,4,5-TP ...	9.115	8.589	5796.9E6	2505.1E6	712.794	726.730
12) T	2,4,5-T	9.398	8.966	5859.5E6	2347.0E6	729.503	740.496
13) T	2,4-DB	9.948	9.470	1120.8E6	294.8E6	745.010	710.659
14) T	DINOSEB	11.100	9.795	4363.4E6	1755.1E6	770.269	795.408
15) T	Picloram	10.922	10.774	7646.0E6	2764.0E6	715.821	721.710
16) T	DCPA	11.368	10.725	7487.5E6	3111.5E6	735.210	729.147

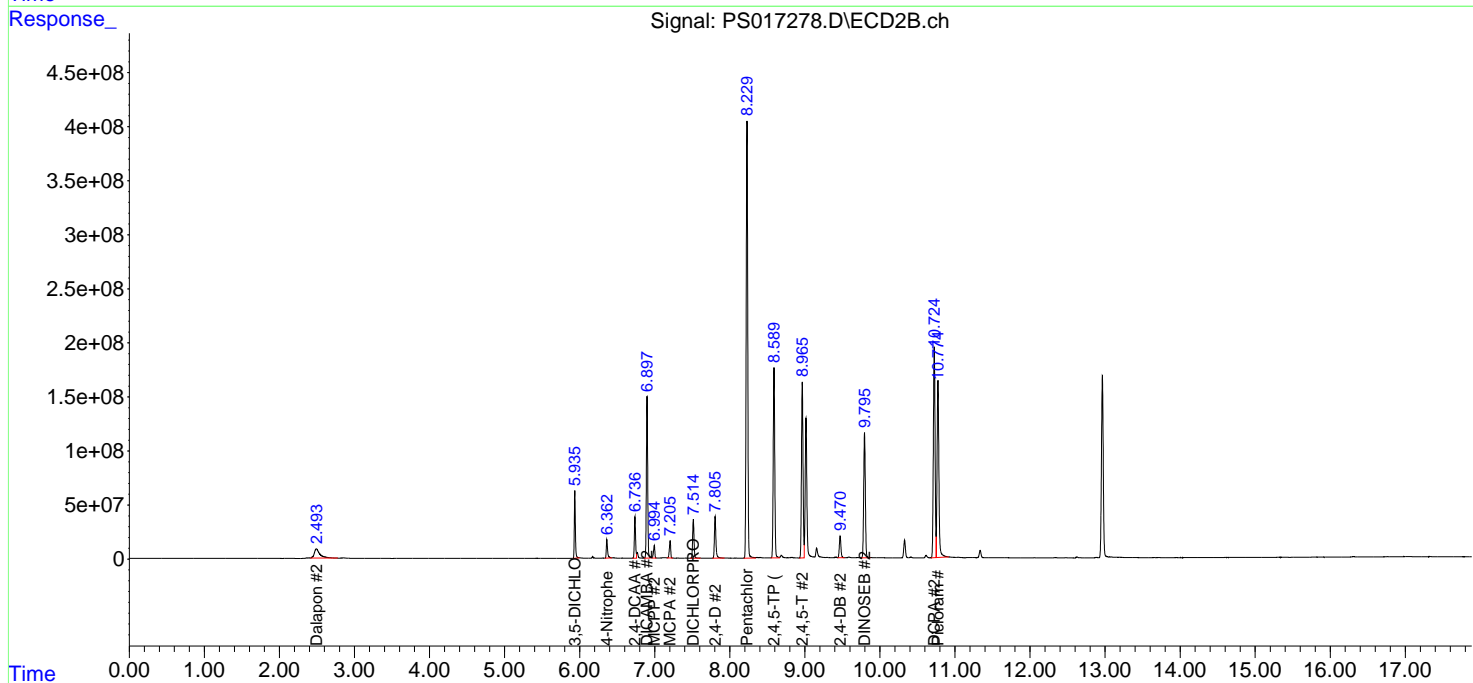
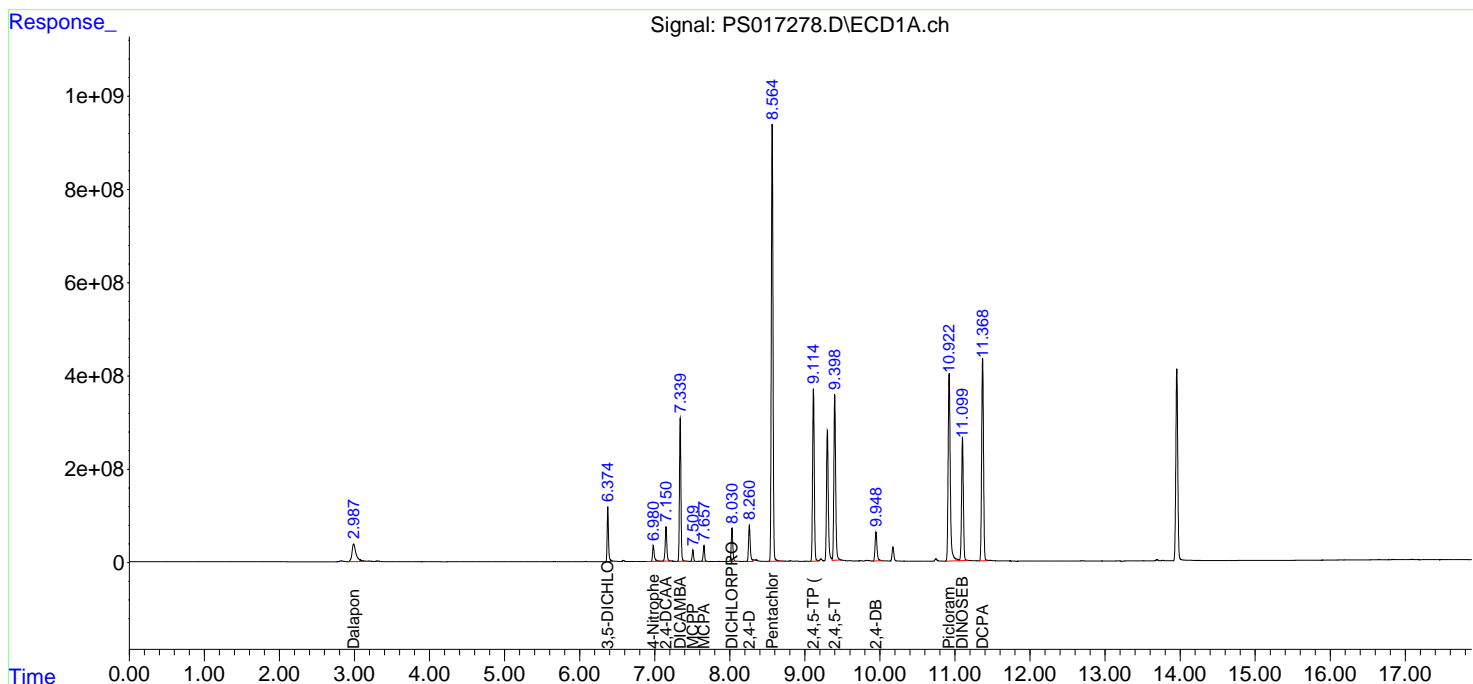
(f)=RT Delta > 1/2 Window (#)=Amounts differ by > 25% (m)=manual int.

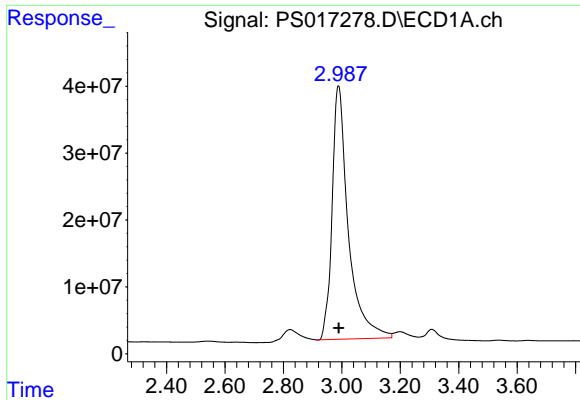
Data Path : Z:\pestpcbsrv\HPCHEM1\ECD_S\Data\PS102921\
 Data File : PS017278.D
 Signal(s) : Signal #1: ECD1A.ch Signal #2: ECD2B.ch
 Acq On : 29 Oct 2021 13:14
 Operator : DD\AJ
 Sample : HSTDCCC750
 Misc :
 ALS Vial : 3 Sample Multiplier: 1

Instrument :
 ECD_S
 ClientSampled :

Integration File signal 1: autoint1.e
 Integration File signal 2: autoint2.e
 Quant Time: Oct 29 23:41:24 2021
 Quant Method : Z:\pestpcbsrv\HPCHEM1\ECD_S\Method\PS101821.M
 Quant Title : 8080.M
 QLast Update : Tue Oct 19 01:21:46 2021
 Response via : Initial Calibration
 Integrator: ChemStation

Volume Inj. : 2 µl
 Signal #1 Phase : Rtx-CLPesticides Signal #2 Phase: Rtx-CLPesticides2
 Signal #1 Info : 30M x 0.32mm x0.5 Signal #2 Info : 30M x 0.32mm x 0.25µm

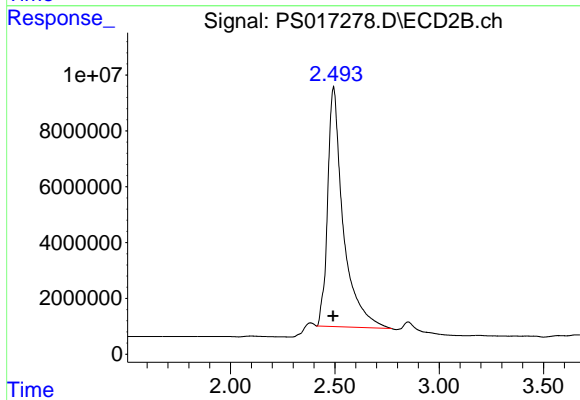




#1 Dalapon

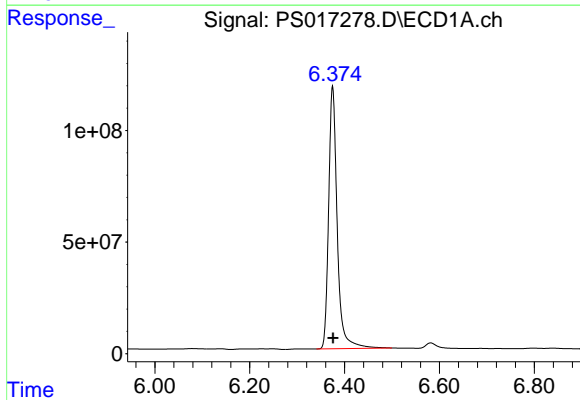
R.T.: 2.988 min
Delta R.T.: -0.001 min
Response: 1463159931
Conc: 673.83 ng/ml

Instrument :
ECD_S
ClientSampleId :



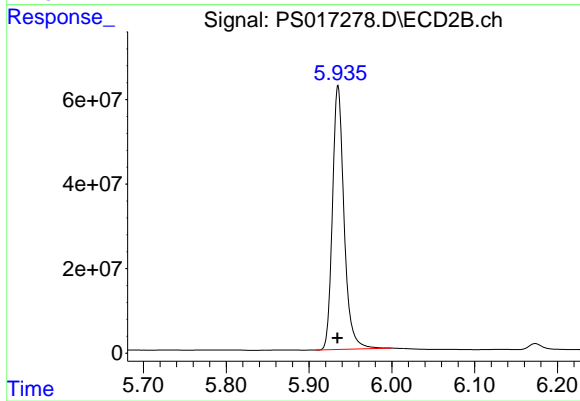
#1 Dalapon

R.T.: 2.494 min
Delta R.T.: 0.003 min
Response: 444812176
Conc: 687.45 ng/ml



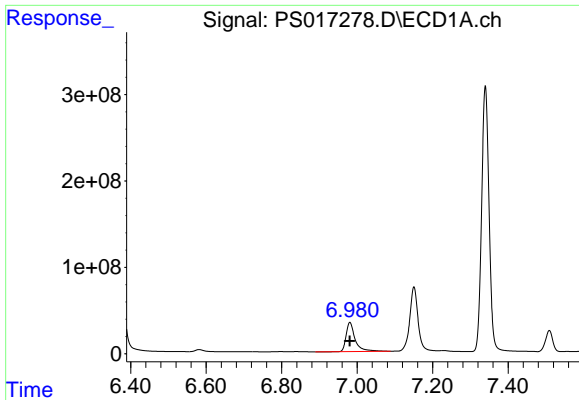
#2 3,5-DICHLOROBENZOIC ACID

R.T.: 6.375 min
Delta R.T.: 0.000 min
Response: 1477329758
Conc: 684.36 ng/ml



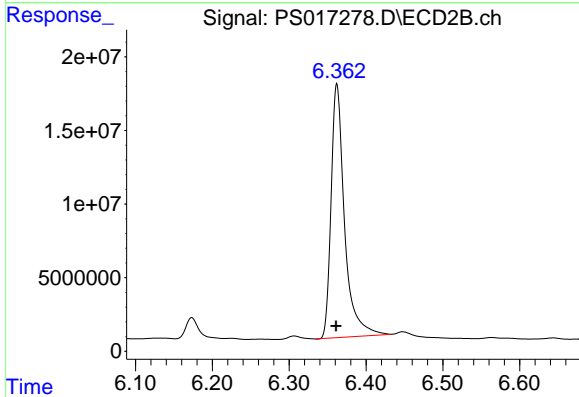
#2 3,5-DICHLOROBENZOIC ACID

R.T.: 5.935 min
Delta R.T.: 0.000 min
Response: 607800314
Conc: 699.80 ng/ml

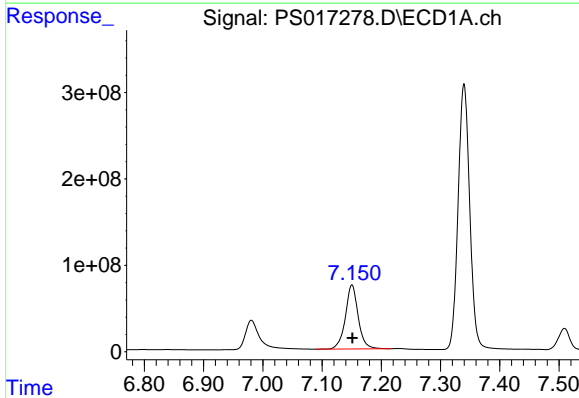


#3 4-Nitrophenol
 R.T.: 6.981 min
 Delta R.T.: 0.000 min
 Response: 556682595
 Conc: 638.28 ng/ml

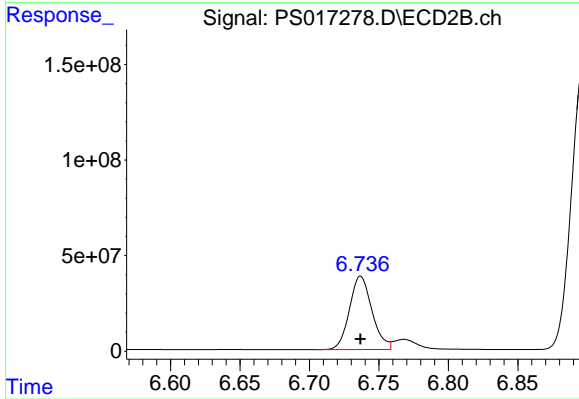
Instrument :
 ECD_S
 ClientSampled :



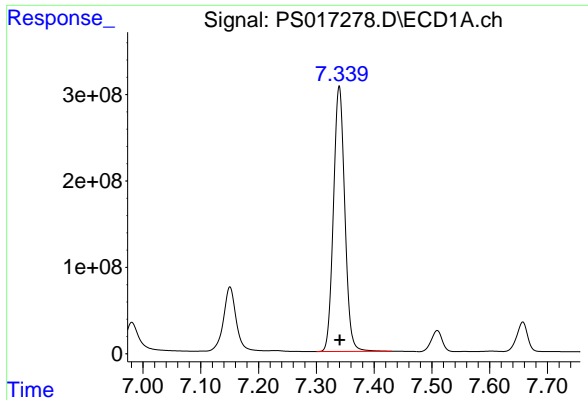
#3 4-Nitrophenol
 R.T.: 6.362 min
 Delta R.T.: 0.001 min
 Response: 207356600
 Conc: 643.28 ng/ml



#4 2,4-DCAA
 R.T.: 7.151 min
 Delta R.T.: 0.000 min
 Response: 1115090264
 Conc: 729.55 ng/ml



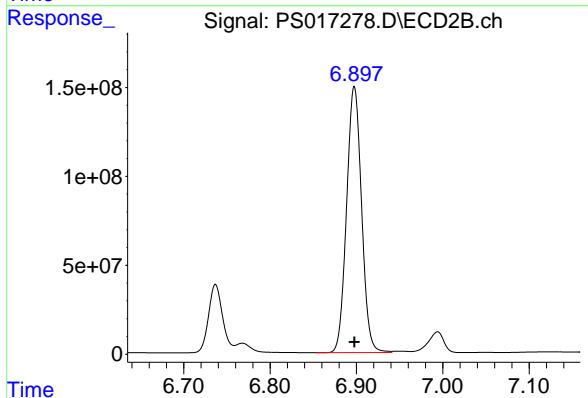
#4 2,4-DCAA
 R.T.: 6.737 min
 Delta R.T.: 0.000 min
 Response: 434617906
 Conc: 743.65 ng/ml



#5 DICAMBA

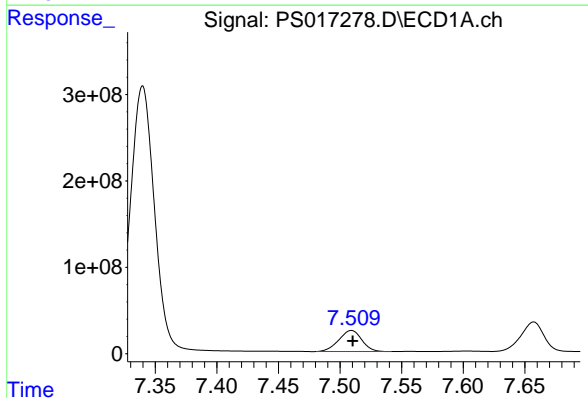
R.T.: 7.340 min
 Delta R.T.: -0.001 min
 Response: 4193279448
 Conc: 700.08 ng/ml

Instrument :
 ECD_S
 ClientSampleId :



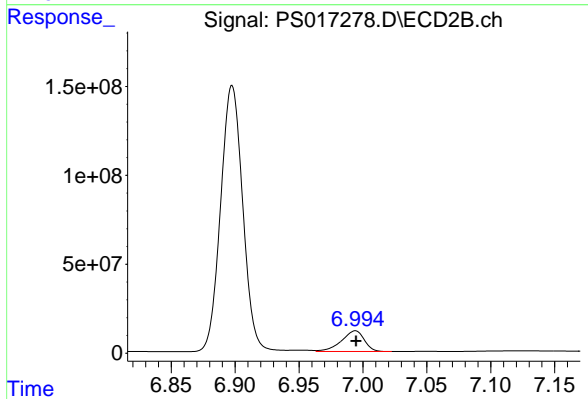
#5 DICAMBA

R.T.: 6.898 min
 Delta R.T.: 0.000 min
 Response: 1804092897
 Conc: 708.58 ng/ml



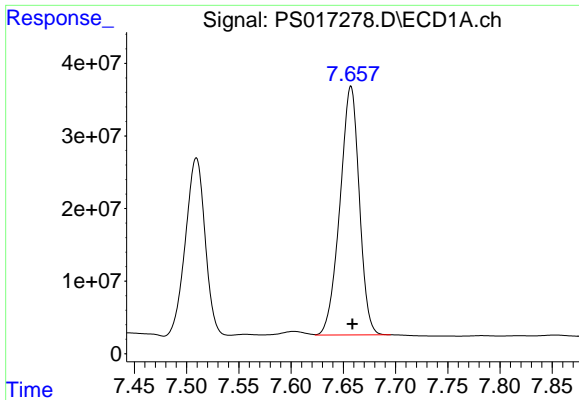
#6 MCPP

R.T.: 7.509 min
 Delta R.T.: 0.000 min
 Response: 318471401
 Conc: 71.24 ug/ml



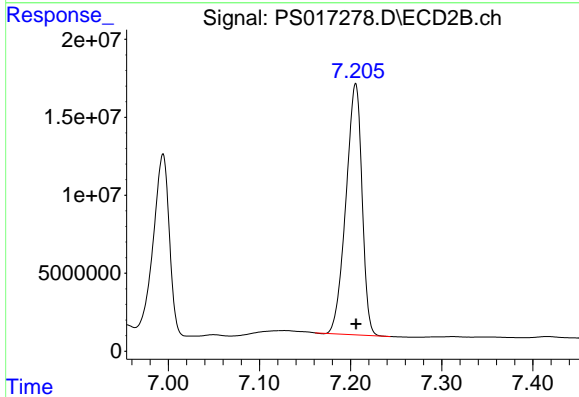
#6 MCPP

R.T.: 6.994 min
 Delta R.T.: 0.000 min
 Response: 145364192
 Conc: 72.18 ug/ml

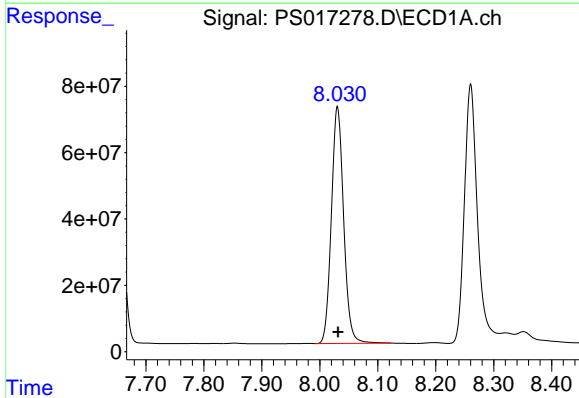


#7 MCPA
 R.T.: 7.657 min
 Delta R.T.: -0.001 min
 Response: 441904906
 Conc: 71.63 ug/ml

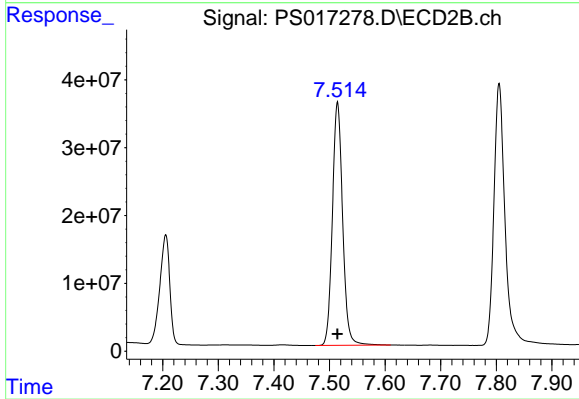
Instrument :
 ECD_S
 ClientSampled :



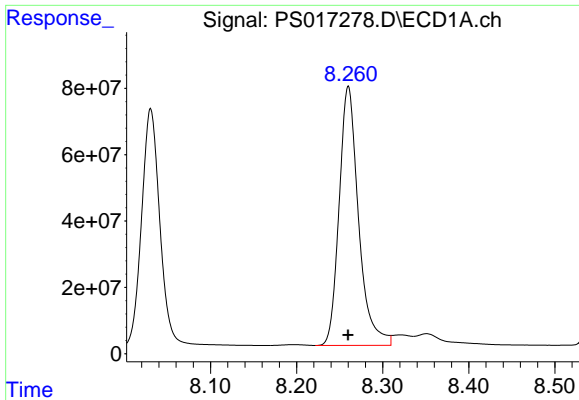
#7 MCPA
 R.T.: 7.206 min
 Delta R.T.: 0.000 min
 Response: 197616541
 Conc: 66.75 ug/ml



#8 DICHLORPROP
 R.T.: 8.031 min
 Delta R.T.: -0.001 min
 Response: 1044341778
 Conc: 696.51 ng/ml



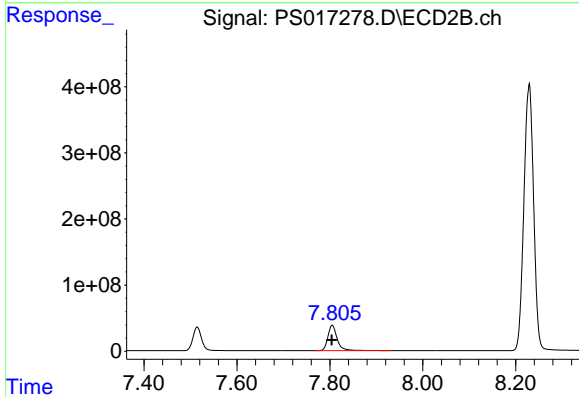
#8 DICHLORPROP
 R.T.: 7.514 min
 Delta R.T.: 0.000 min
 Response: 457736646
 Conc: 711.77 ng/ml



#9 2,4-D

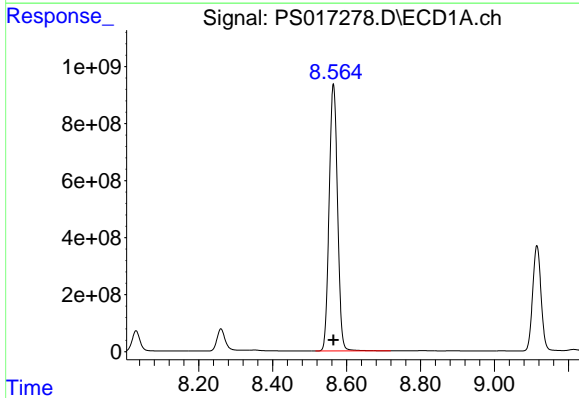
R.T.: 8.260 min
Delta R.T.: 0.000 min
Response: 1224767127
Conc: 691.49 ng/ml

Instrument :
ECD_S
ClientSampleId :



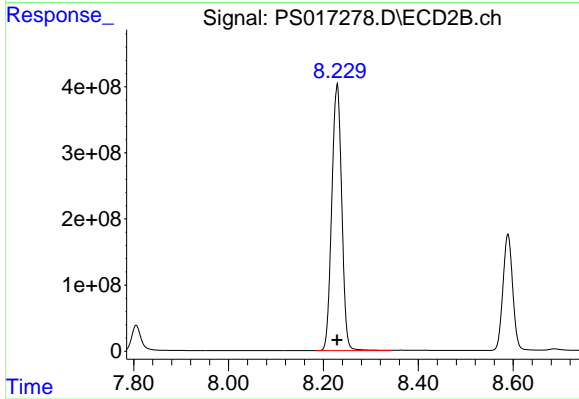
#9 2,4-D

R.T.: 7.805 min
Delta R.T.: 0.001 min
Response: 534879109
Conc: 710.73 ng/ml



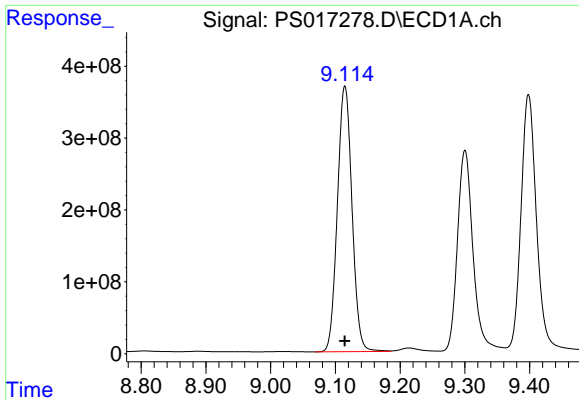
#10 Pentachlorophenol

R.T.: 8.564 min
Delta R.T.: 0.000 min
Response: 14741905178
Conc: 710.52 ng/ml



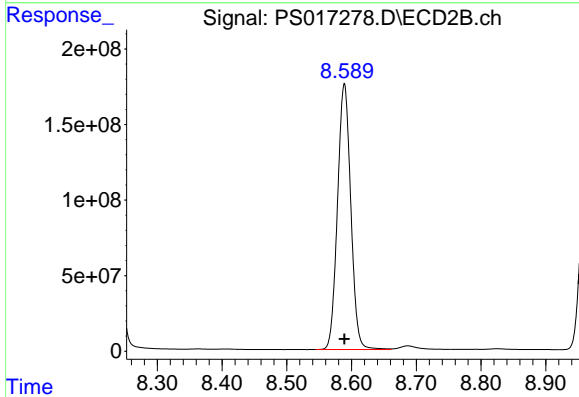
#10 Pentachlorophenol

R.T.: 8.229 min
Delta R.T.: 0.000 min
Response: 5880909856
Conc: 720.29 ng/ml

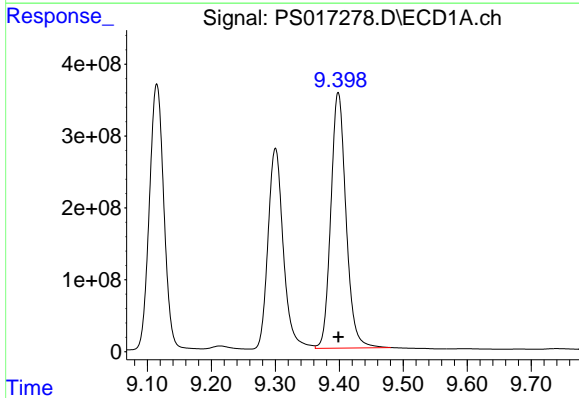


#11 2,4,5-TP (SILVEX)
 R.T.: 9.115 min
 Delta R.T.: 0.000 min
 Response: 5796940240
 Conc: 712.79 ng/ml

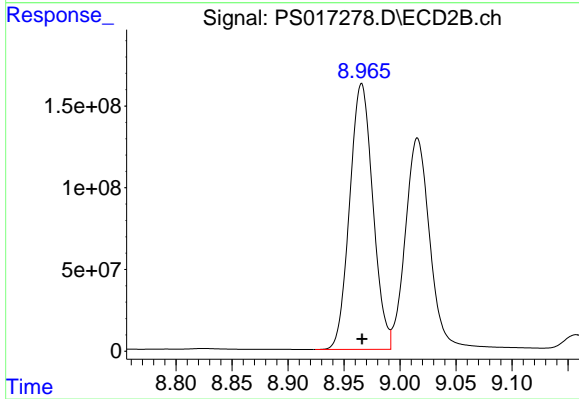
Instrument :
 ECD_S
 ClientSampleId :



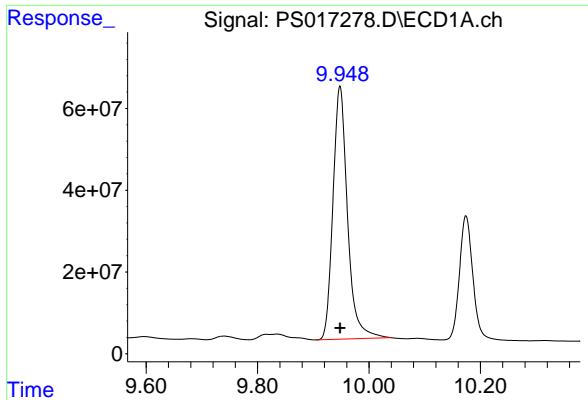
#11 2,4,5-TP (SILVEX)
 R.T.: 8.589 min
 Delta R.T.: 0.000 min
 Response: 2505148840
 Conc: 726.73 ng/ml



#12 2,4,5-T
 R.T.: 9.398 min
 Delta R.T.: 0.000 min
 Response: 5859468495
 Conc: 729.50 ng/ml



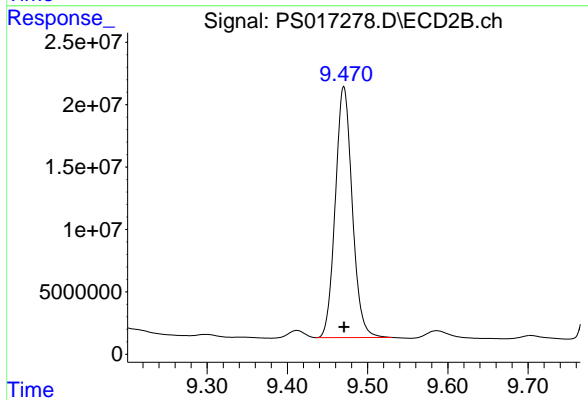
#12 2,4,5-T
 R.T.: 8.966 min
 Delta R.T.: 0.000 min
 Response: 2346995946
 Conc: 740.50 ng/ml



#13 2,4-DB

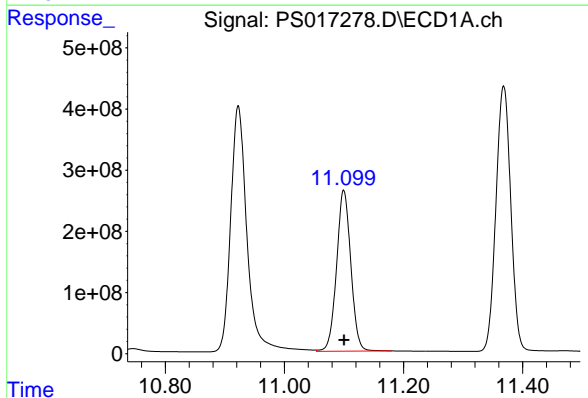
R.T.: 9.948 min
 Delta R.T.: 0.000 min
 Response: 1120753820
 Conc: 745.01 ng/ml

Instrument :
 ECD_S
 ClientSampleId :



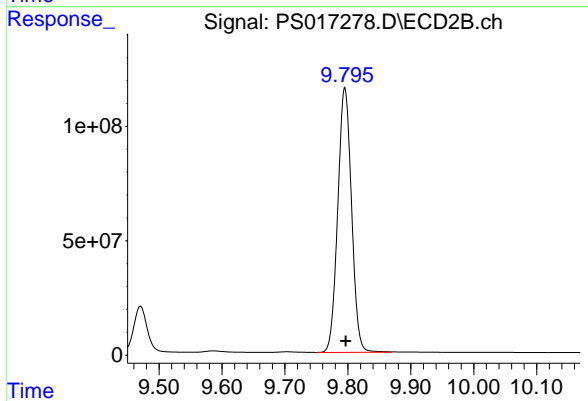
#13 2,4-DB

R.T.: 9.470 min
 Delta R.T.: 0.000 min
 Response: 294763985
 Conc: 710.66 ng/ml



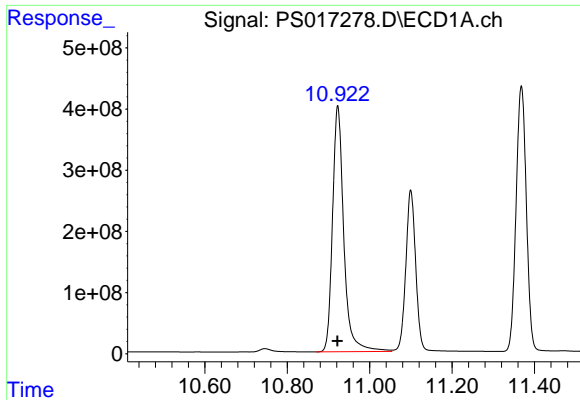
#14 DINOSEB

R.T.: 11.100 min
 Delta R.T.: 0.000 min
 Response: 4363436688
 Conc: 770.27 ng/ml



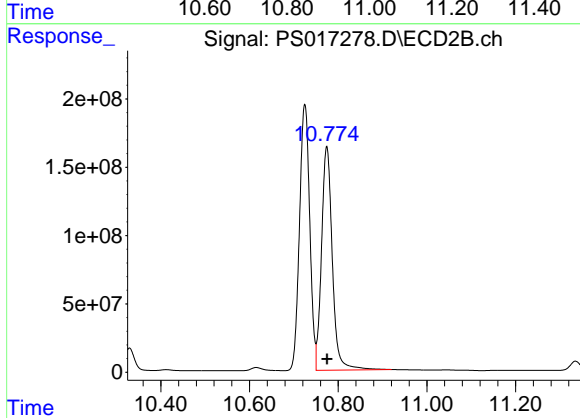
#14 DINOSEB

R.T.: 9.795 min
 Delta R.T.: -0.002 min
 Response: 1755129334
 Conc: 795.41 ng/ml

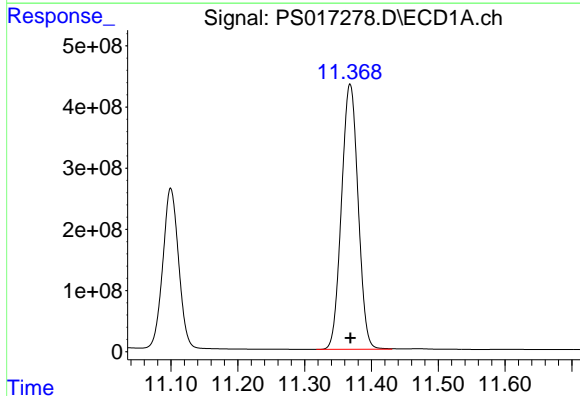


#15 Picloram
 R.T.: 10.922 min
 Delta R.T.: 0.000 min
 Response: 7645991398
 Conc: 715.82 ng/ml

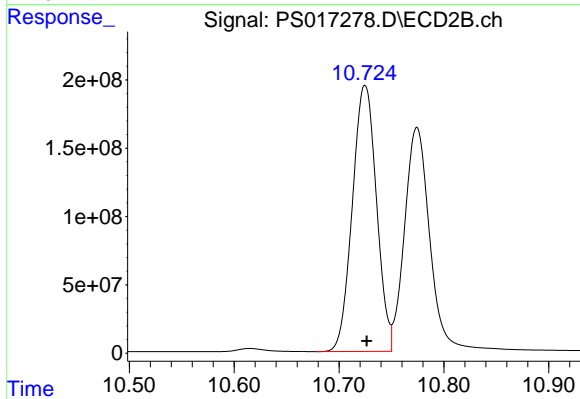
Instrument :
 ECD_S
 ClientSampleId :



#15 Picloram
 R.T.: 10.774 min
 Delta R.T.: 0.000 min
 Response: 2763952026
 Conc: 721.71 ng/ml



#16 DCPA
 R.T.: 11.368 min
 Delta R.T.: 0.000 min
 Response: 7487530452
 Conc: 735.21 ng/ml



#16 DCPA
 R.T.: 10.725 min
 Delta R.T.: -0.002 min
 Response: 3111456169
 Conc: 729.15 ng/ml