

Data Path : Z:\pestpcbsrv\HPCHEM1\ECD_S\Data\PS102921\
 Data File : PS017281.D
 Signal(s) : Signal #1: ECD1A.ch Signal #2: ECD2B.ch
 Acq On : 29 Oct 2021 17:38
 Operator : DD\AJ
 Sample : PB140345BSD
 Misc :
 ALS Vial : 8 Sample Multiplier: 1

Instrument :
 ECD_S
 ClientSampleId :

Integration File signal 1: autoint1.e
 Integration File signal 2: autoint2.e
 Quant Time: Oct 29 23:42:29 2021
 Quant Method : Z:\pestpcbsrv\HPCHEM1\ECD_S\Method\PS101821.M
 Quant Title : 8080.M
 QLast Update : Tue Oct 19 01:21:46 2021
 Response via : Initial Calibration
 Integrator: ChemStation

Volume Inj. : 2 µl
 Signal #1 Phase : Rtx-CLPesticides Signal #2 Phase: Rtx-CLPesticides2
 Signal #1 Info : 30M x 0.32mm x0.5 Signal #2 Info : 30M x 0.32mm x 0.25µm

	Compound	RT#1	RT#2	Resp#1	Resp#2	ng/ml	ng/ml

System Monitoring Compounds							
4) S	2,4-DCAA	7.152	6.738	759.1E6	292.3E6	496.642	500.202
Target Compounds							
1) T	Dalapon	2.987	2.491	1056.9E6	313.8E6	486.742	485.031
2) T	3,5-DICHL...	6.376	5.936	1018.2E6	412.2E6	471.655	474.611
3) T	4-Nitroph...	6.984	6.364	376.8E6	147.8E6	432.042	458.571
5) T	DICAMBA	7.341	6.899	2895.1E6	1246.0E6	483.337	489.399
6) T	MCP P	7.508	6.992	211.2E6	97411300	47.245	48.370
7) T	MCPA	7.655	7.203	300.1E6	137.7E6	48.640	46.529
8) T	DICHLORPROP	8.032	7.516	722.3E6	311.7E6	481.758	484.765
9) T	2,4-D	8.262	7.807	869.3E6	360.9E6	490.818	479.535
10) T	Pentachlo...	8.566	8.230	10585.9E6	4256.6E6	510.212	521.339
11) T	2,4,5-TP ...	9.116	8.591	4041.0E6	1732.4E6	496.887	502.556
12) T	2,4,5-T	9.401	8.968	4078.4E6	1602.9E6	507.760	505.734
13) T	2,4-DB	9.951	9.473	716.2E6	193.6E6	476.057	466.642
14) T	DINOSEB	11.100	9.797	3034.1E6	1182.6E6	535.595	535.922
15) T	Picloram	10.925	10.776	5418.2E6	1945.5E6	507.255	508.005
16) T	DCPA	11.368	10.726	5295.0E6	2174.2E6	519.925	509.511

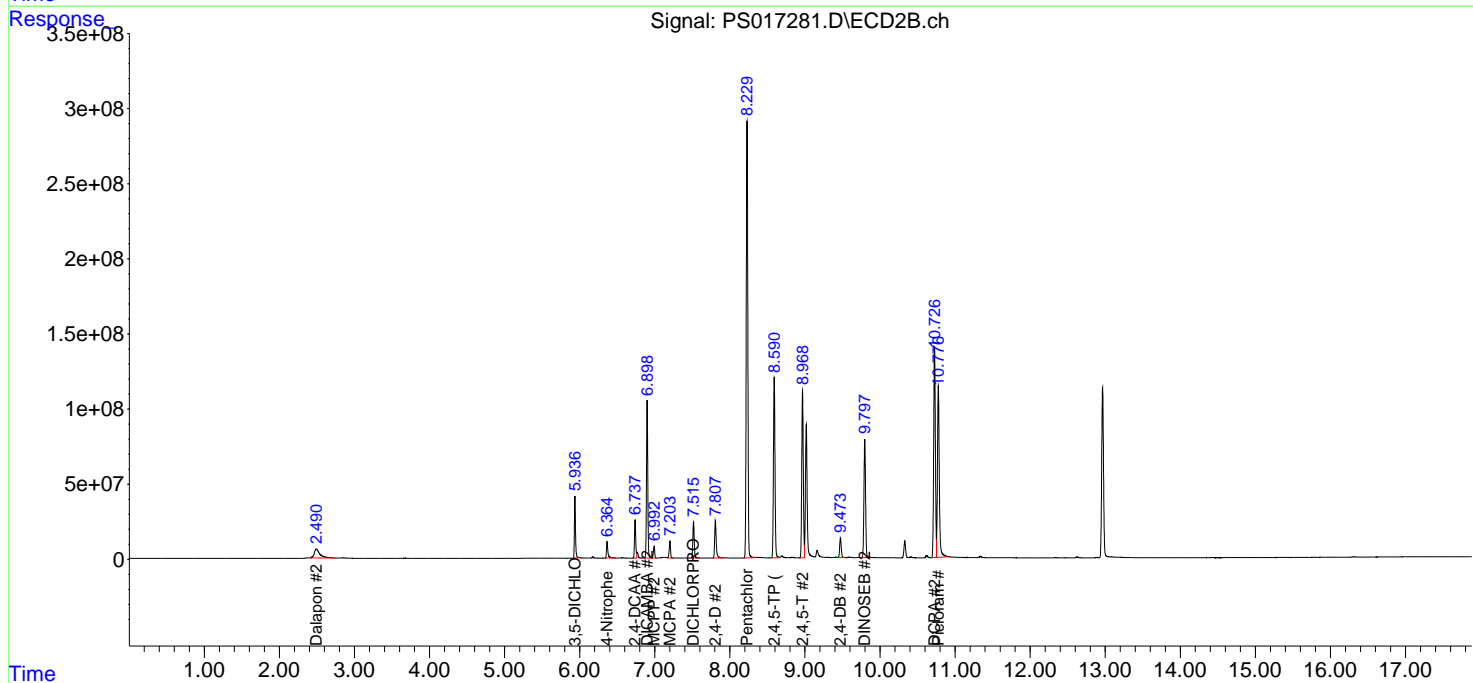
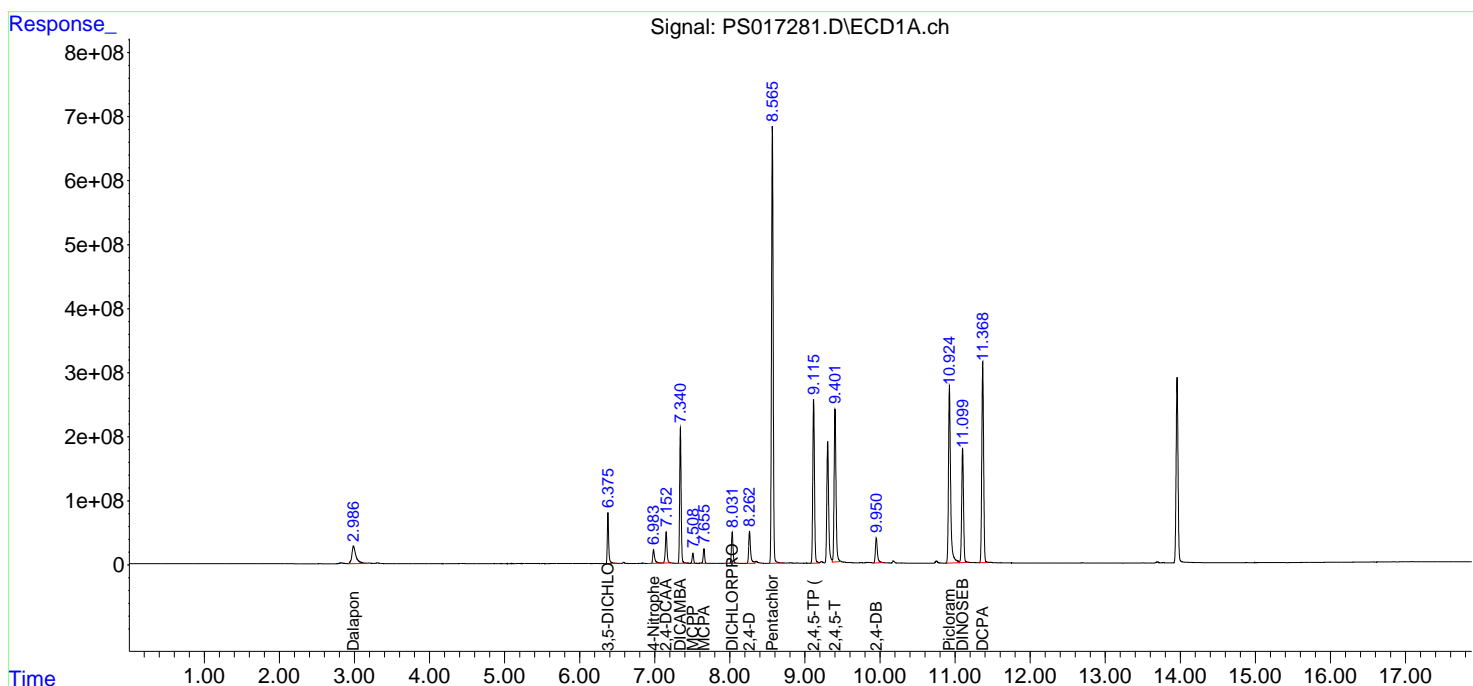
(f)=RT Delta > 1/2 Window (#)=Amounts differ by > 25% (m)=manual int.

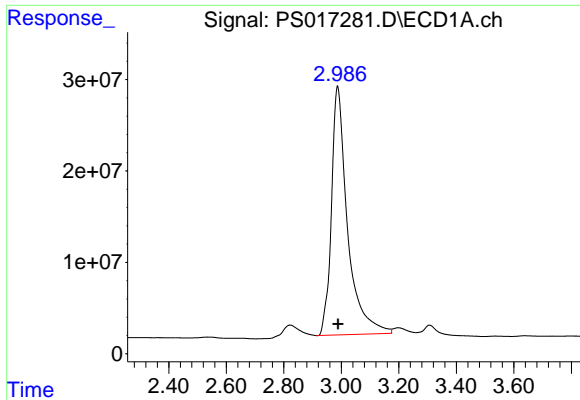
Data Path : Z:\pestpcbsrv\HPCHEM1\ECD_S\Data\PS102921\
 Data File : PS017281.D
 Signal(s) : Signal #1: ECD1A.ch Signal #2: ECD2B.ch
 Acq On : 29 Oct 2021 17:38
 Operator : DD\AJ
 Sample : PB140345BSD
 Misc :
 ALS Vial : 8 Sample Multiplier: 1

Instrument :
 ECD_S
 ClientSampled :

Integration File signal 1: autoint1.e
 Integration File signal 2: autoint2.e
 Quant Time: Oct 29 23:42:29 2021
 Quant Method : Z:\pestpcbsrv\HPCHEM1\ECD_S\Method\PS101821.M
 Quant Title : 8080.M
 QLast Update : Tue Oct 19 01:21:46 2021
 Response via : Initial Calibration
 Integrator: ChemStation

Volume Inj. : 2 µl
 Signal #1 Phase : Rtx-CLPesticides Signal #2 Phase: Rtx-CLPesticides2
 Signal #1 Info : 30M x 0.32mm x0.5 Signal #2 Info : 30M x 0.32mm x 0.25µm

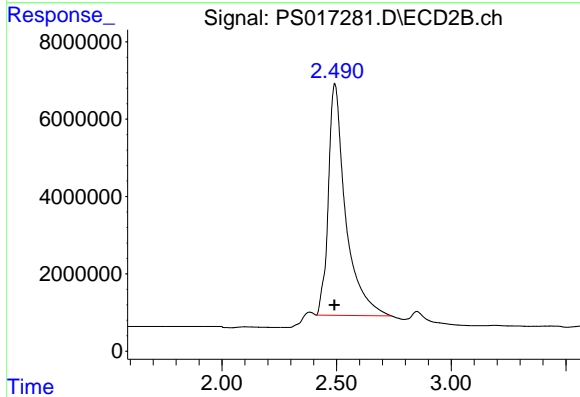




#1 Dalapon

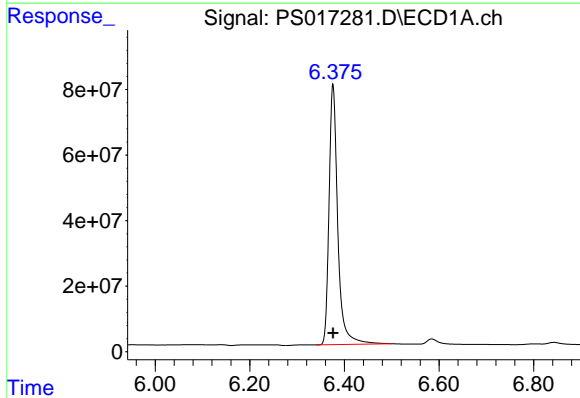
R.T.: 2.987 min
 Delta R.T.: -0.002 min
 Response: 1056916485
 Conc: 486.74 ng/ml

Instrument :
 ECD_S
 ClientSampleId :



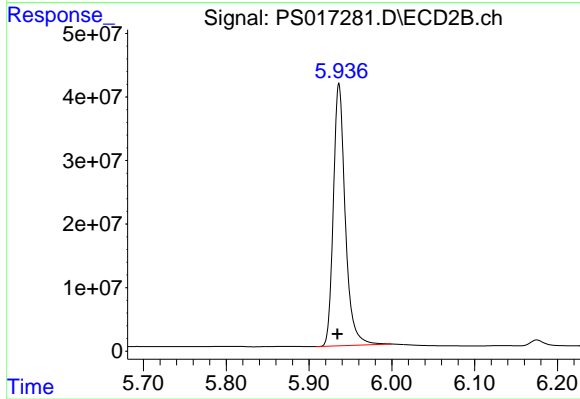
#1 Dalapon

R.T.: 2.491 min
 Delta R.T.: 0.000 min
 Response: 313836333
 Conc: 485.03 ng/ml



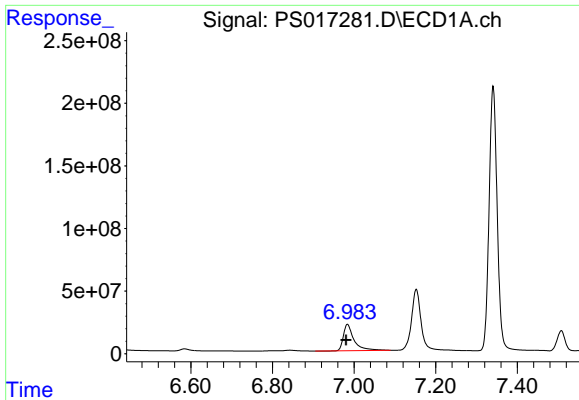
#2 3,5-DICHLOROBENZOIC ACID

R.T.: 6.376 min
 Delta R.T.: 0.000 min
 Response: 1018161191
 Conc: 471.65 ng/ml



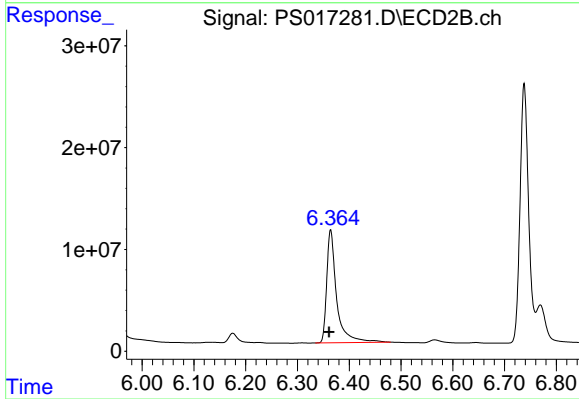
#2 3,5-DICHLOROBENZOIC ACID

R.T.: 5.936 min
 Delta R.T.: 0.002 min
 Response: 412214707
 Conc: 474.61 ng/ml

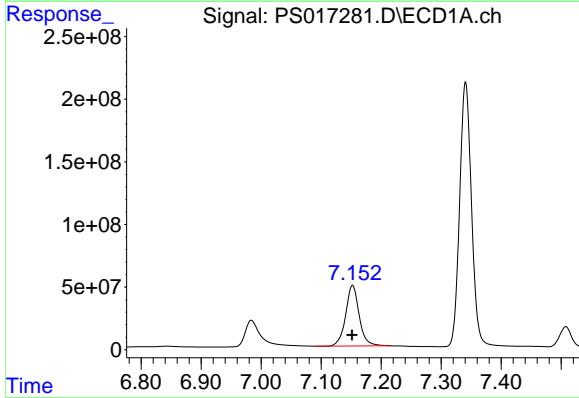


#3 4-Nitrophenol
R.T.: 6.984 min
Delta R.T.: 0.004 min
Response: 376807666
Conc: 432.04 ng/ml

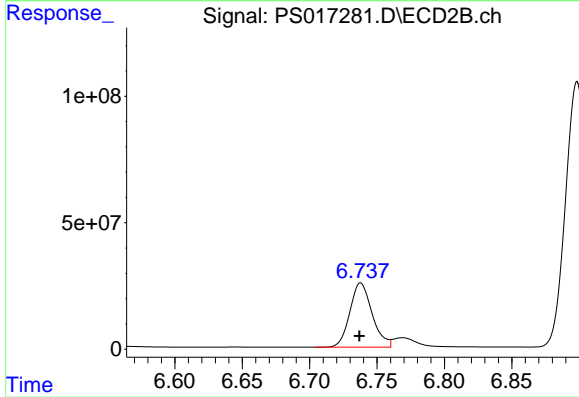
Instrument :
ECD_S
ClientSampleId :



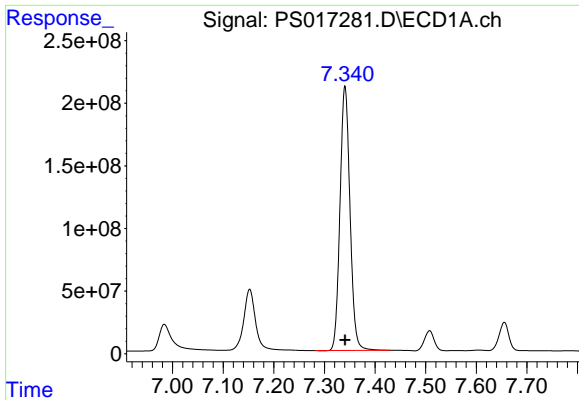
#3 4-Nitrophenol
R.T.: 6.364 min
Delta R.T.: 0.003 min
Response: 147818000
Conc: 458.57 ng/ml



#4 2,4-DCAA
R.T.: 7.152 min
Delta R.T.: 0.001 min
Response: 759096636
Conc: 496.64 ng/ml



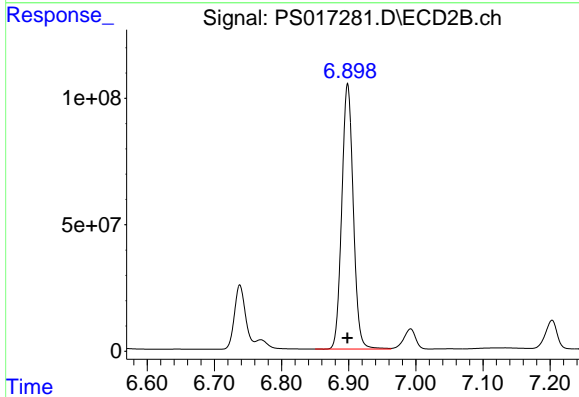
#4 2,4-DCAA
R.T.: 6.738 min
Delta R.T.: 0.001 min
Response: 292338614
Conc: 500.20 ng/ml



#5 DICAMBA

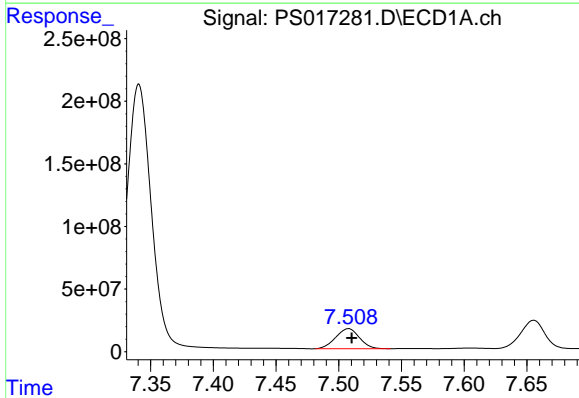
R.T.: 7.341 min
 Delta R.T.: 0.000 min
 Response: 2895057367
 Conc: 483.34 ng/ml

Instrument :
 ECD_S
 ClientSampleId :



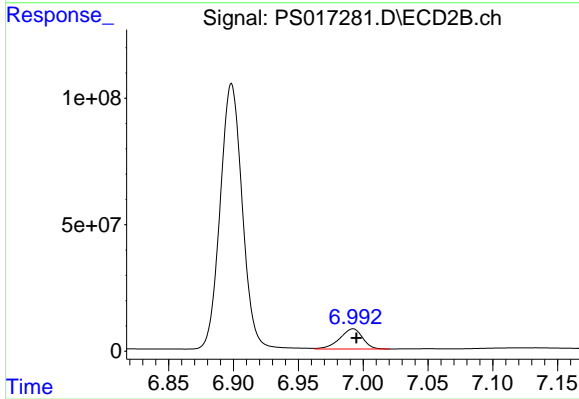
#5 DICAMBA

R.T.: 6.899 min
 Delta R.T.: 0.000 min
 Response: 1246041712
 Conc: 489.40 ng/ml



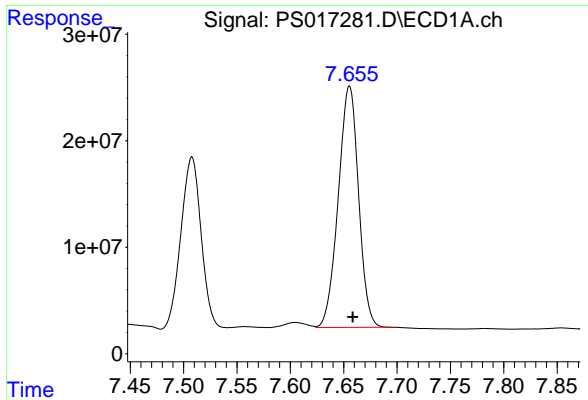
#6 MCP

R.T.: 7.508 min
 Delta R.T.: -0.002 min
 Response: 211204081
 Conc: 47.24 ug/ml



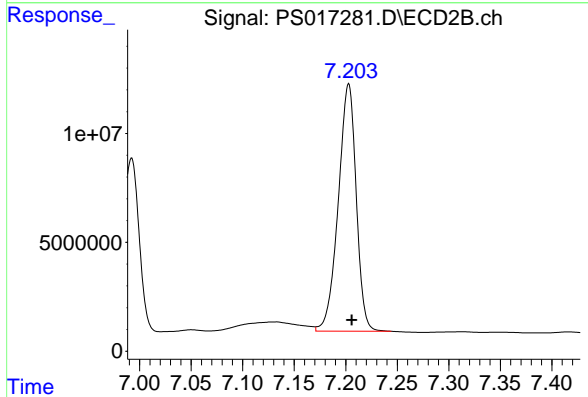
#6 MCP

R.T.: 6.992 min
 Delta R.T.: -0.002 min
 Response: 97411300
 Conc: 48.37 ug/ml

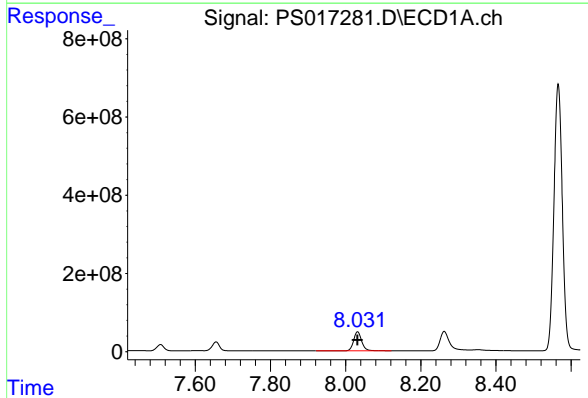


#7 MCPA
 R.T.: 7.655 min
 Delta R.T.: -0.003 min
 Response: 300084003
 Conc: 48.64 ug/ml

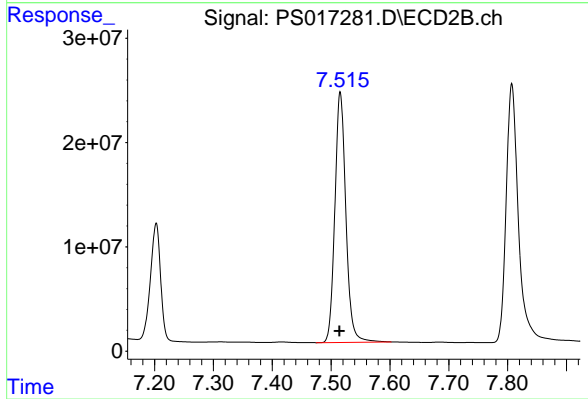
Instrument :
 ECD_S
 ClientSampled :



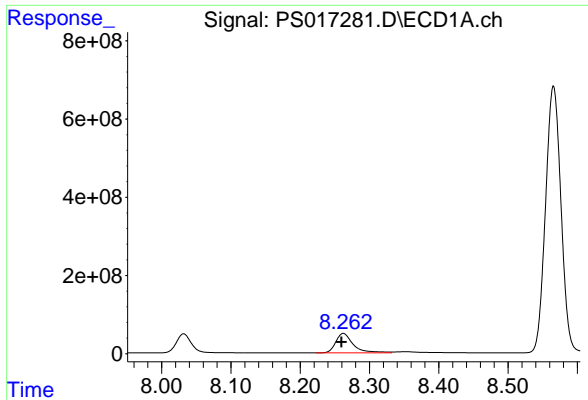
#7 MCPA
 R.T.: 7.203 min
 Delta R.T.: -0.003 min
 Response: 137744106
 Conc: 46.53 ug/ml



#8 DICHLORPROP
 R.T.: 8.032 min
 Delta R.T.: 0.000 min
 Response: 722344352
 Conc: 481.76 ng/ml



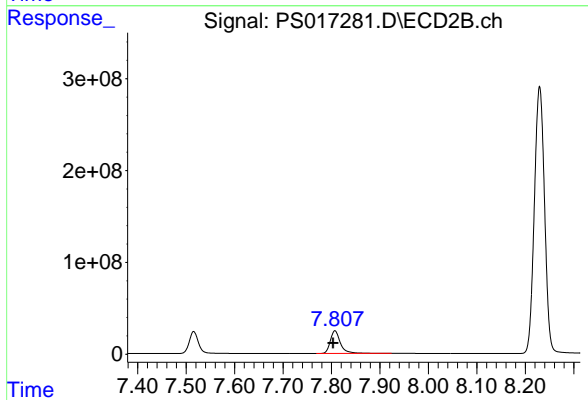
#8 DICHLORPROP
 R.T.: 7.516 min
 Delta R.T.: 0.001 min
 Response: 311749279
 Conc: 484.76 ng/ml



#9 2,4-D

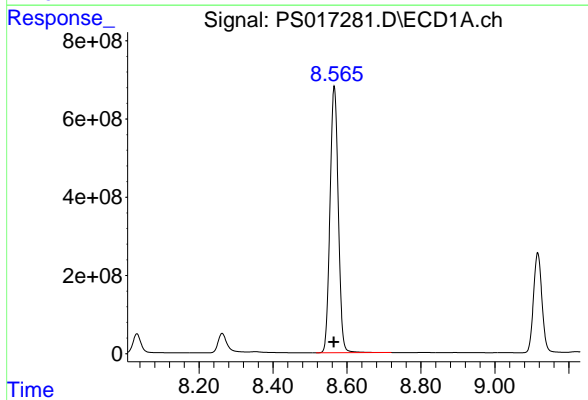
R.T.: 8.262 min
 Delta R.T.: 0.003 min
 Response: 869336905
 Conc: 490.82 ng/ml

Instrument :
 ECD_S
 ClientSampleId :



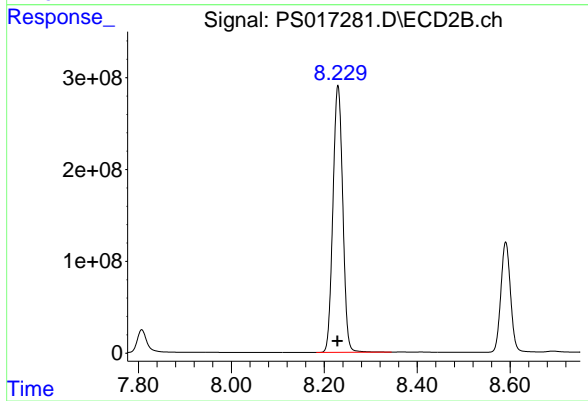
#9 2,4-D

R.T.: 7.807 min
 Delta R.T.: 0.003 min
 Response: 360888864
 Conc: 479.54 ng/ml



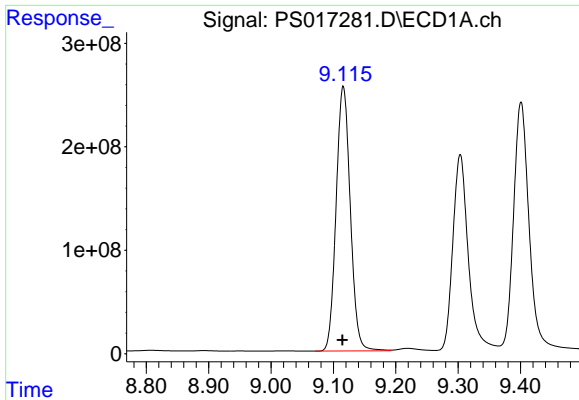
#10 Pentachlorophenol

R.T.: 8.566 min
 Delta R.T.: 0.000 min
 Response: 10585903901
 Conc: 510.21 ng/ml



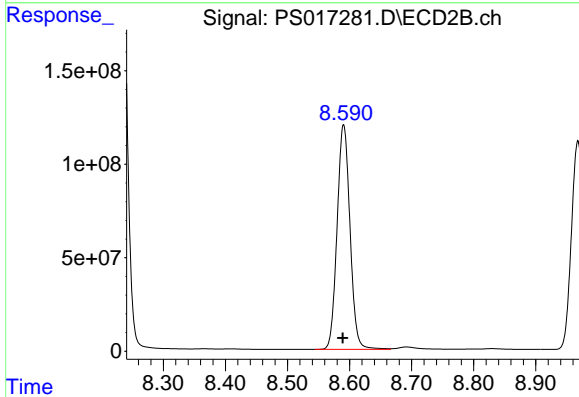
#10 Pentachlorophenol

R.T.: 8.230 min
 Delta R.T.: 0.000 min
 Response: 4256564077
 Conc: 521.34 ng/ml

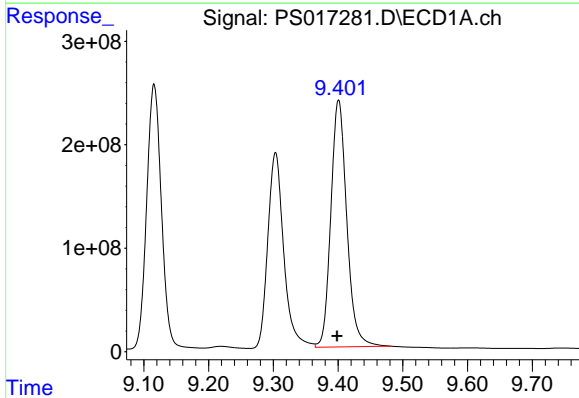


#11 2,4,5-TP (SILVEX)
 R.T.: 9.116 min
 Delta R.T.: 0.001 min
 Response: 4041035258
 Conc: 496.89 ng/ml

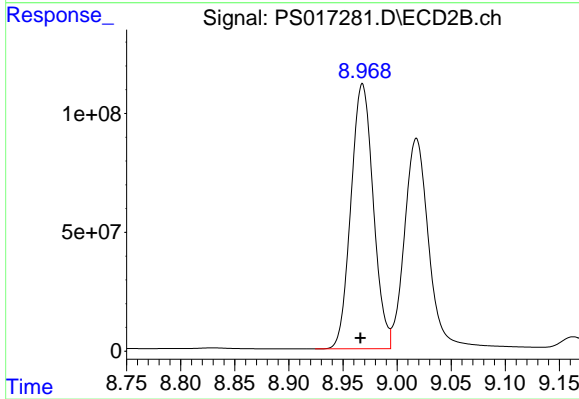
Instrument :
 ECD_S
 ClientSampleId :



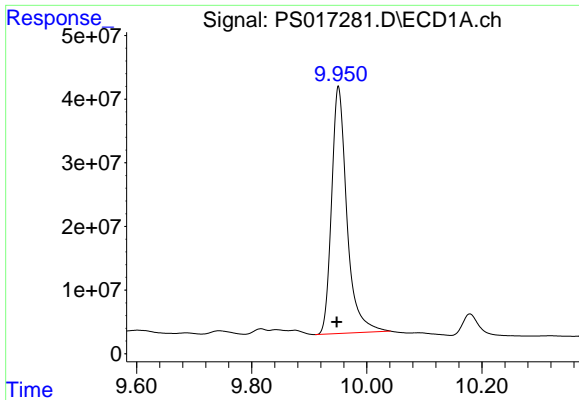
#11 2,4,5-TP (SILVEX)
 R.T.: 8.591 min
 Delta R.T.: 0.001 min
 Response: 1732386184
 Conc: 502.56 ng/ml



#12 2,4,5-T
 R.T.: 9.401 min
 Delta R.T.: 0.002 min
 Response: 4078393027
 Conc: 507.76 ng/ml

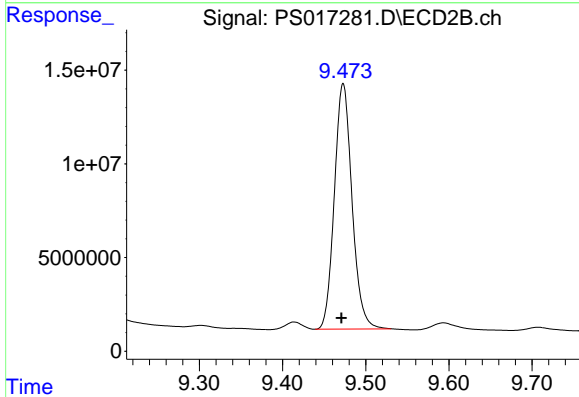


#12 2,4,5-T
 R.T.: 8.968 min
 Delta R.T.: 0.002 min
 Response: 1602919344
 Conc: 505.73 ng/ml

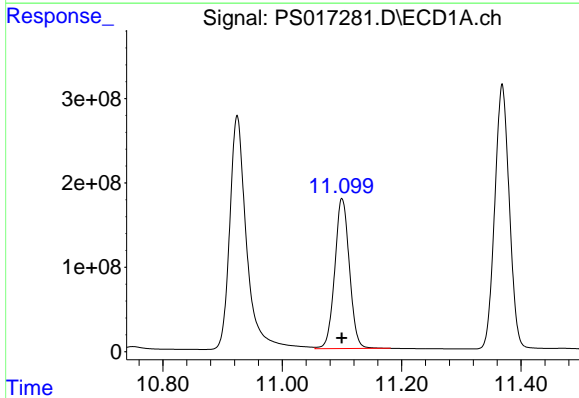


#13 2,4-DB
 R.T.: 9.951 min
 Delta R.T.: 0.003 min
 Response: 716154421
 Conc: 476.06 ng/ml

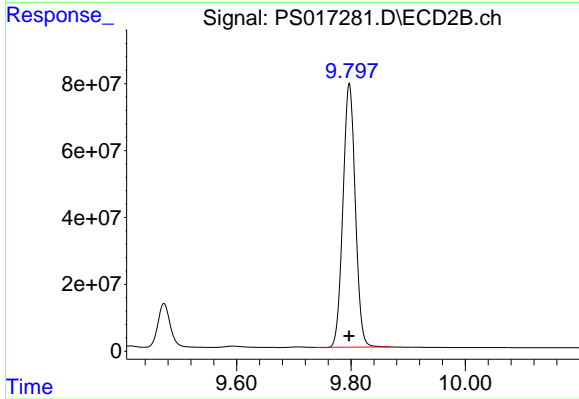
Instrument :
 ECD_S
 ClientSampleId :



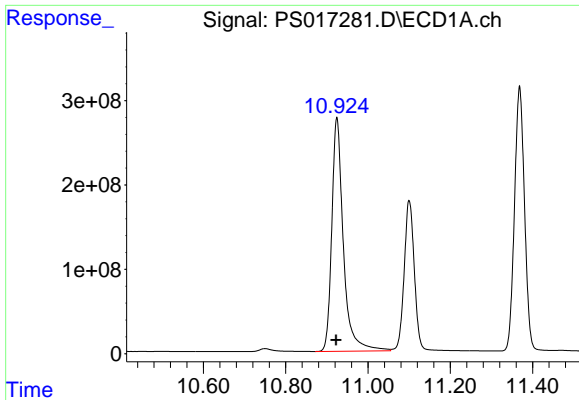
#13 2,4-DB
 R.T.: 9.473 min
 Delta R.T.: 0.002 min
 Response: 193551562
 Conc: 466.64 ng/ml



#14 DINOSEB
 R.T.: 11.100 min
 Delta R.T.: 0.000 min
 Response: 3034050632
 Conc: 535.60 ng/ml

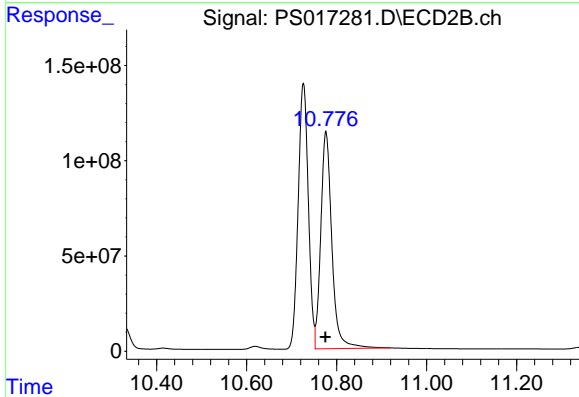


#14 DINOSEB
 R.T.: 9.797 min
 Delta R.T.: 0.000 min
 Response: 1182553063
 Conc: 535.92 ng/ml

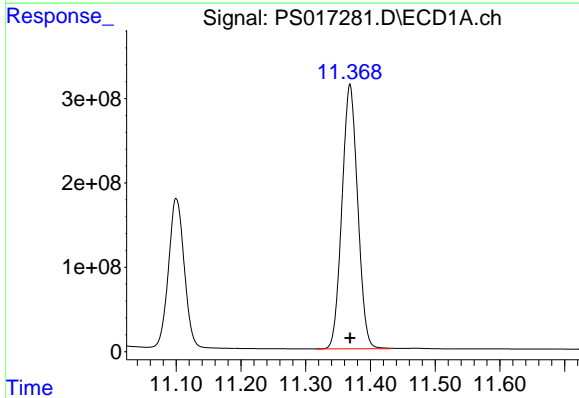


#15 Picloram
 R.T.: 10.925 min
 Delta R.T.: 0.002 min
 Response: 5418210623
 Conc: 507.25 ng/ml

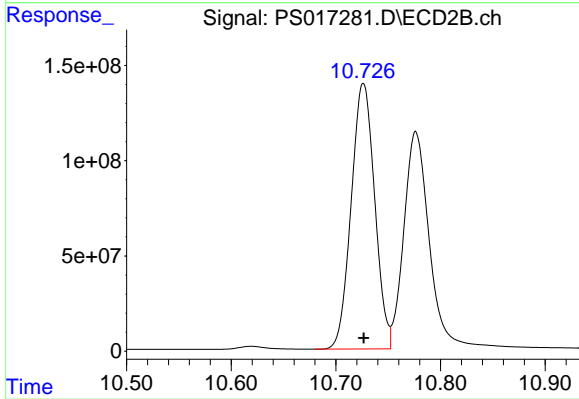
Instrument :
 ECD_S
 ClientSampled :



#15 Picloram
 R.T.: 10.776 min
 Delta R.T.: 0.001 min
 Response: 1945518804
 Conc: 508.00 ng/ml



#16 DCPA
 R.T.: 11.368 min
 Delta R.T.: 0.000 min
 Response: 5295027904
 Conc: 519.93 ng/ml



#16 DCPA
 R.T.: 10.726 min
 Delta R.T.: 0.000 min
 Response: 2174210944
 Conc: 509.51 ng/ml