

Data Path : Z:\pestpcbsrv\HPCHEM1\ECD_S\Data\PS103018\
 Data File : PS002207.D
 Signal(s) : Signal #1: ECD1A.ch Signal #2: ECD2B.ch
 Acq On : 30 Oct 2018 21:56
 Operator : EI\SJ
 Sample : PB114301BL
 Misc :
 ALS Vial : 15 Sample Multiplier: 1

Instrument :
 ECD_S
 ClientSampleId :

Integration File signal 1: autoint1.e
 Integration File signal 2: autoint2.e
 Quant Time: Oct 31 02:33:55 2018
 Quant Method : Z:\pestpcbsrv\HPCHEM1\ECD_S\Method\PS102618.M
 Quant Title : 8080.M
 QLast Update : Sat Oct 27 01:34:10 2018
 Response via : Initial Calibration
 Integrator: ChemStation

Volume Inj. : 2 µl
 Signal #1 Phase : Rtx-CLPesticides Signal #2 Phase: Rtx-CLPesticides2
 Signal #1 Info : 30M x 0.32mm x0.5 Signal #2 Info : 30M x 0.32mm x 0.25µm

	Compound	RT#1	RT#2	Resp#1	Resp#2	ng/ml	ng/ml

System Monitoring Compounds							
4) S	2,4-DCAA	11.421	10.911	156.3E6	146.1E6	496.740	406.805
Target Compounds							
1) T	Dalapon	2.892	2.339	23355778	47339316	50.921	104.847 #
2) T	3,5-DICHL...	0.000	9.006	0	2716896	N.D.	6.125 #
3) T	4-Nitroph...	11.072	10.070	10452522	6293991	62.654	35.298 #
5) T	DICAMBA	0.000	11.151	0	8172806	N.D.	6.540 #
6) T	MCP P	12.103	11.452	9382036	327419	9.497	0.381 #
7) T	MCPA	12.383	11.769	9561880	23442315	6.368	17.321 #
8) T	DICHLORPROP	0.000	12.272	0	1680877	N.D.	5.234 #
9) T	2,4-D	0.000	12.780	0	1082308	N.D.	2.541 #
11) T	2,4,5-TP ...	0.000	13.971	0	1183813	N.D.	0.647 #
12) T	2,4,5-T	0.000	14.521	0	15278742	N.D.	10.203 #
13) T	2,4-DB	0.000	15.101	0	2412990	N.D.	10.891 #
14) T	DINOSEB	17.151	15.588	5146764	1691641	3.757	1.336 #
15) T	Picloram	16.916	16.778	86251582	16633572	36.160	7.353 #
16) T	DCPA	17.532	16.828	23090545	89942190	9.836	37.985 #

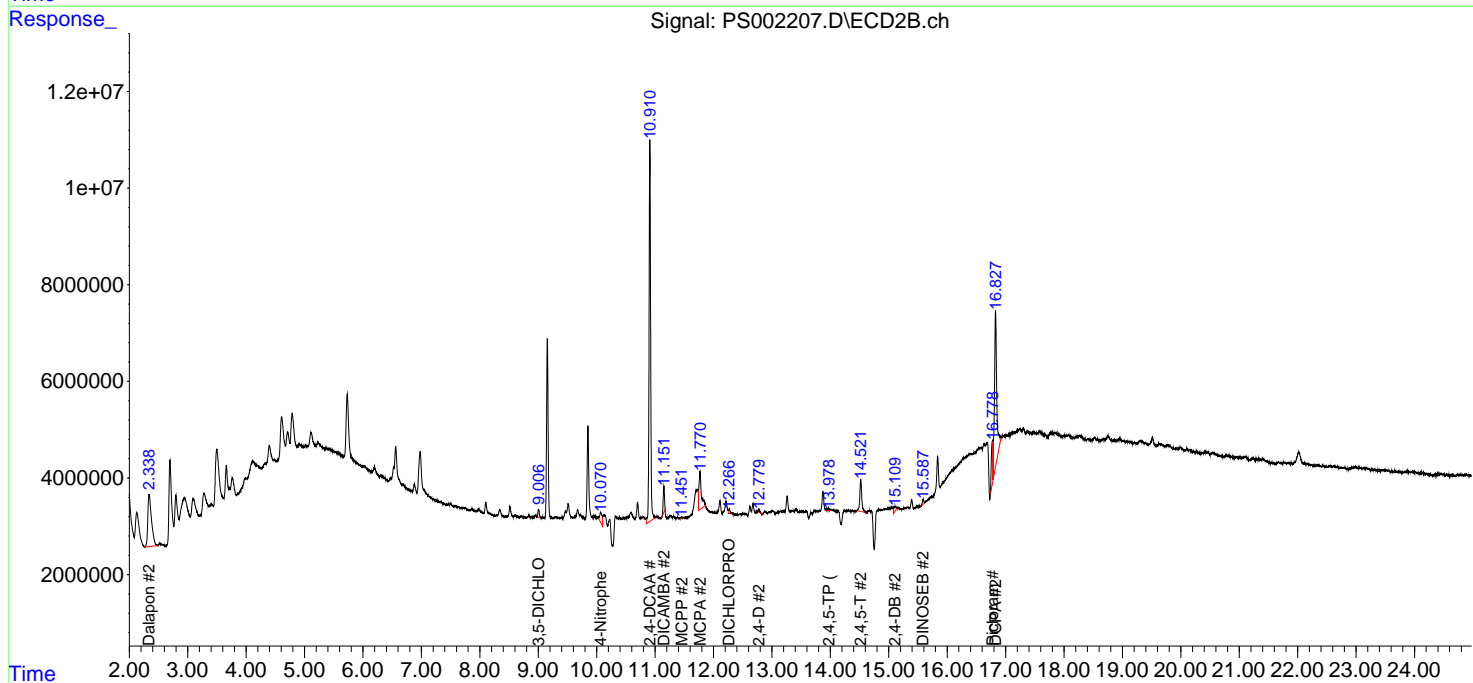
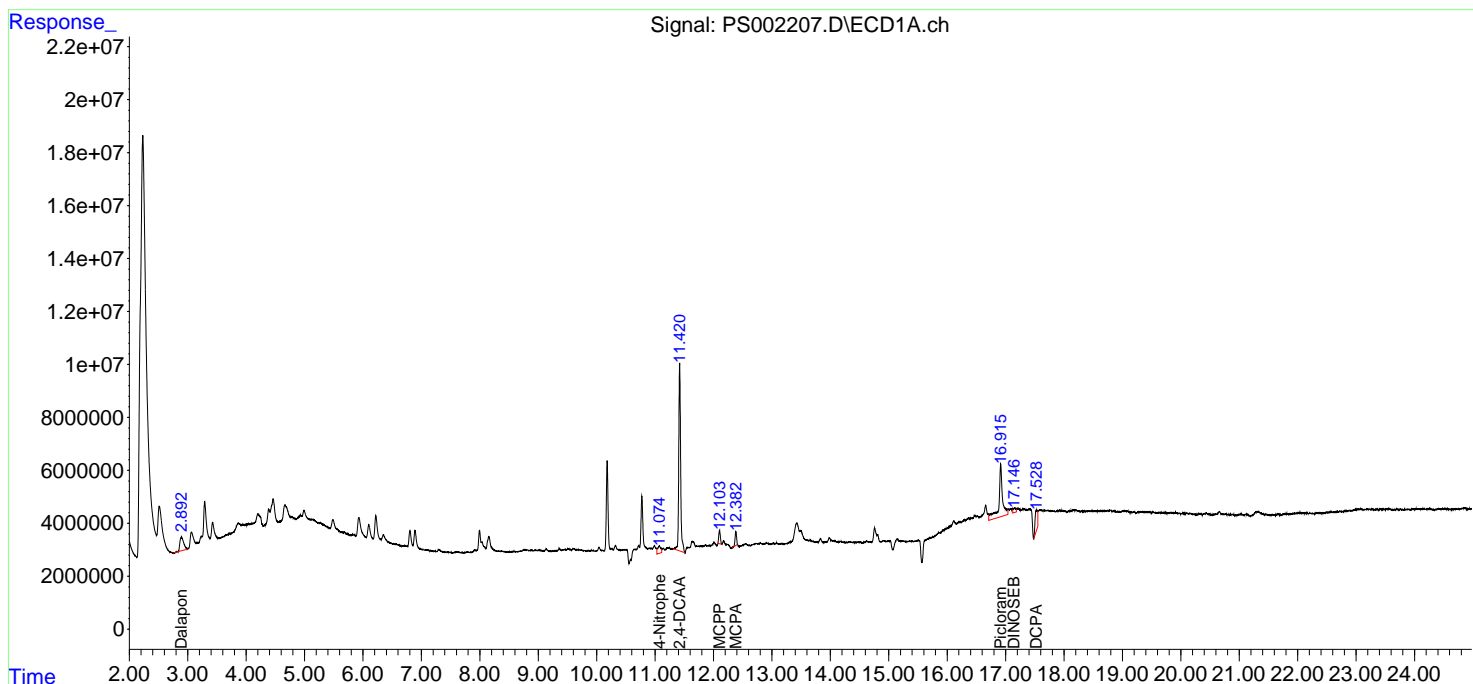
(f)=RT Delta > 1/2 Window (#)=Amounts differ by > 25% (m)=manual int.

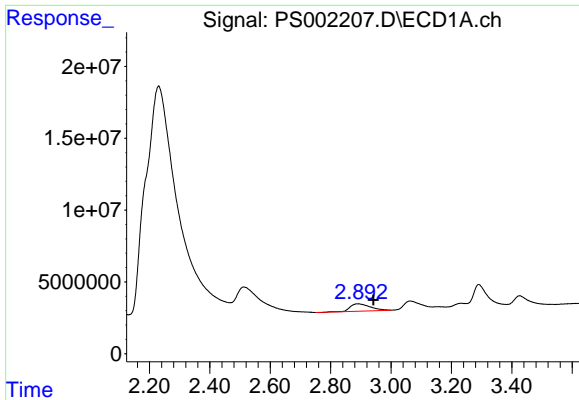
Data Path : Z:\pestpcbsrv\HPCHEM1\ECD_S\Data\PS103018\
 Data File : PS002207.D
 Signal(s) : Signal #1: ECD1A.ch Signal #2: ECD2B.ch
 Acq On : 30 Oct 2018 21:56
 Operator : EI\SJ
 Sample : PB114301BL
 Misc :
 ALS Vial : 15 Sample Multiplier: 1

Instrument :
 ECD_S
 ClientSampled :

Integration File signal 1: autoint1.e
 Integration File signal 2: autoint2.e
 Quant Time: Oct 31 02:33:55 2018
 Quant Method : Z:\pestpcbsrv\HPCHEM1\ECD_S\Method\PS102618.M
 Quant Title : 8080.M
 QLast Update : Sat Oct 27 01:34:10 2018
 Response via : Initial Calibration
 Integrator: ChemStation

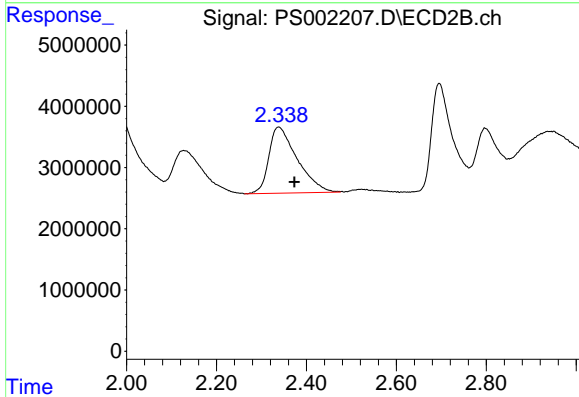
Volume Inj. : 2 µl
 Signal #1 Phase : Rtx-CLPesticides Signal #2 Phase: Rtx-CLPesticides2
 Signal #1 Info : 30M x 0.32mm x0.5 Signal #2 Info : 30M x 0.32mm x 0.25µm



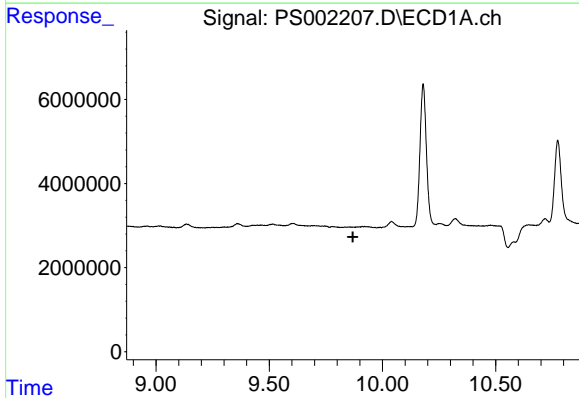


#1 Dalapon
 R.T.: 2.892 min
 Delta R.T.: -0.050 min
 Response: 23355778
 Conc: 50.92 ng/ml

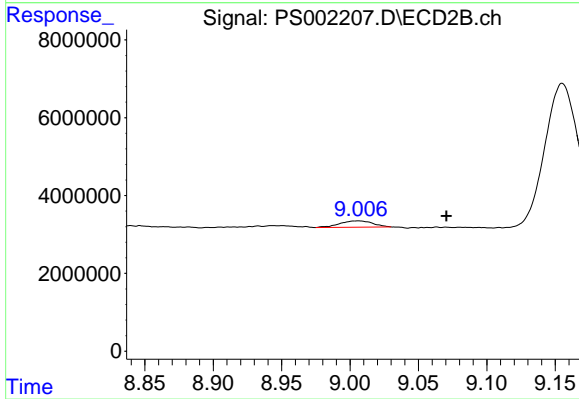
Instrument :
 ECD_S
 ClientSampleId :



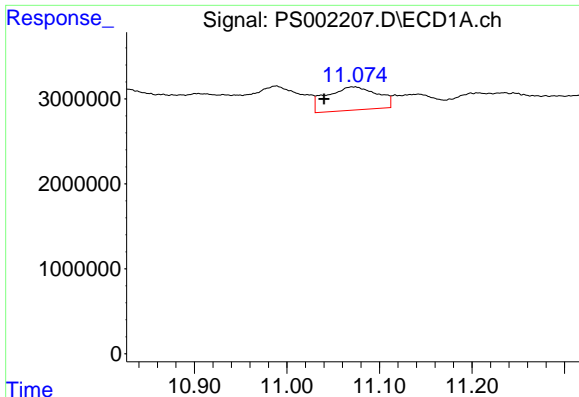
#1 Dalapon
 R.T.: 2.339 min
 Delta R.T.: -0.035 min
 Response: 47339316
 Conc: 104.85 ng/ml



#2 3,5-DICHLOROBENZOIC ACID
 R.T.: 0.000 min
 Exp R.T. : 9.870 min
 Response: 0
 Conc: N.D.



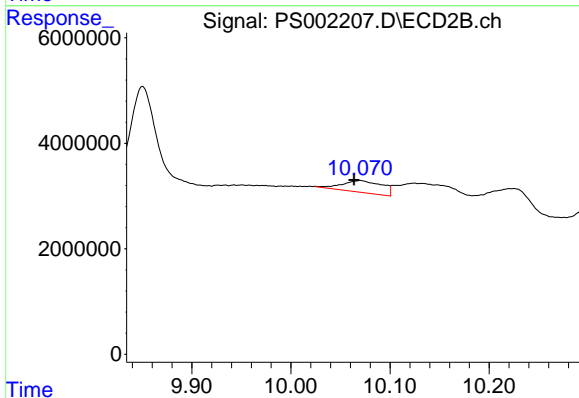
#2 3,5-DICHLOROBENZOIC ACID
 R.T.: 9.006 min
 Delta R.T.: -0.064 min
 Response: 2716896
 Conc: 6.13 ng/ml



#3 4-Nitrophenol

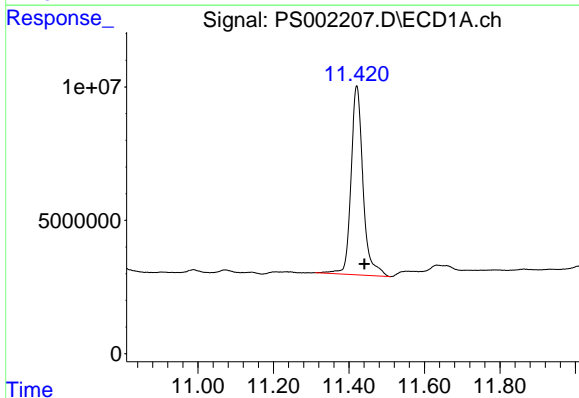
R.T.: 11.072 min
 Delta R.T.: 0.032 min
 Response: 10452522
 Conc: 62.65 ng/ml

Instrument :
 ECD_S
 ClientSampled :



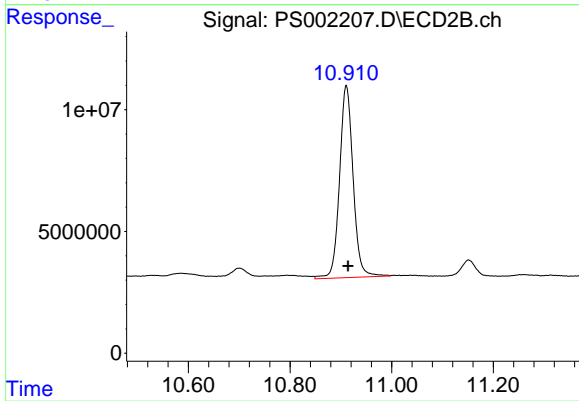
#3 4-Nitrophenol

R.T.: 10.070 min
 Delta R.T.: 0.006 min
 Response: 6293991
 Conc: 35.30 ng/ml



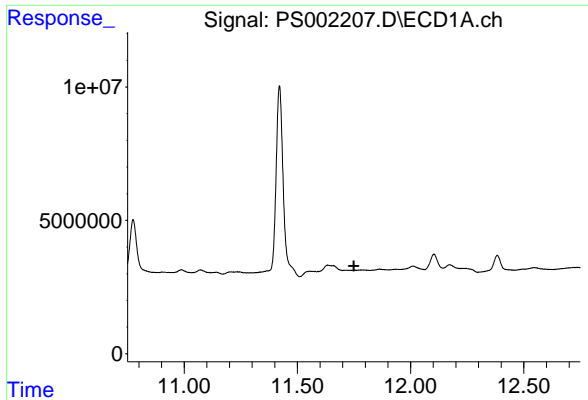
#4 2,4-DCAA

R.T.: 11.421 min
 Delta R.T.: -0.020 min
 Response: 156317065
 Conc: 496.74 ng/ml



#4 2,4-DCAA

R.T.: 10.911 min
 Delta R.T.: -0.004 min
 Response: 146082758
 Conc: 406.80 ng/ml

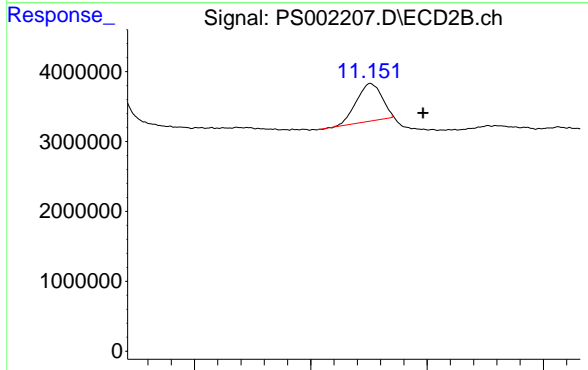


#5 DICAMBA

R.T.: 0.000 min
 Exp R.T.: 11.750 min
 Response: 0
 Conc: N.D.

Instrument :
 ECD_S
 ClientSampled :

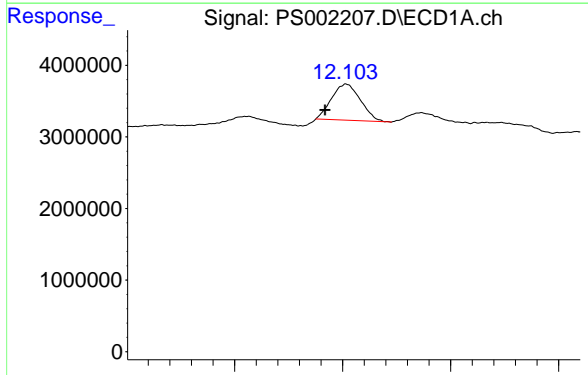
Time



#5 DICAMBA

R.T.: 11.151 min
 Delta R.T.: -0.045 min
 Response: 8172806
 Conc: 6.54 ng/ml

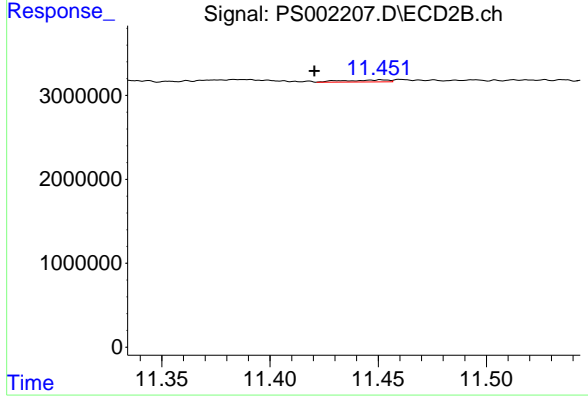
Time



#6 MCPP

R.T.: 12.103 min
 Delta R.T.: 0.019 min
 Response: 9382036
 Conc: 9.50 ug/ml

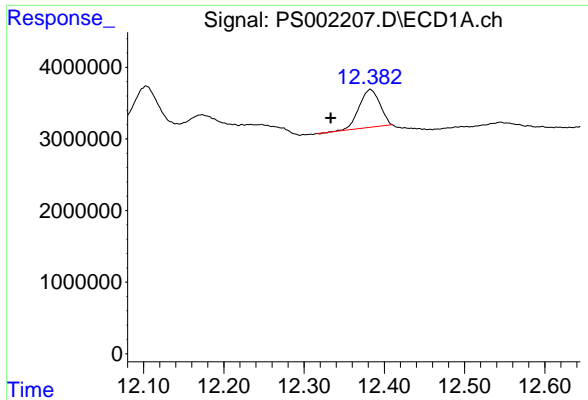
Time



#6 MCPP

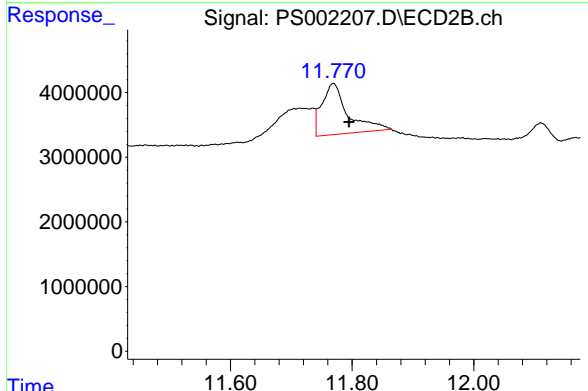
R.T.: 11.452 min
 Delta R.T.: 0.031 min
 Response: 327419
 Conc: 0.38 ug/ml

Time

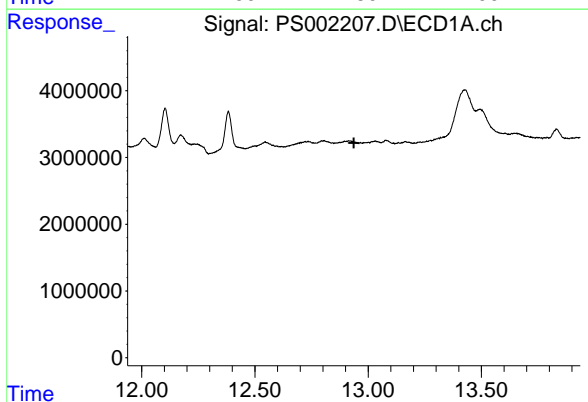


#7 MCPA
 R.T.: 12.383 min
 Delta R.T.: 0.049 min
 Response: 9561880
 Conc: 6.37 ug/ml

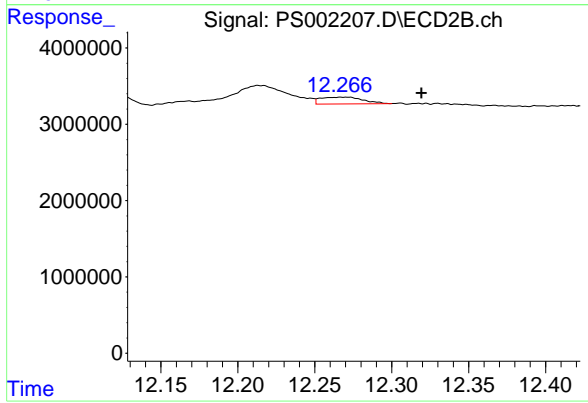
Instrument :
 ECD_S
 ClientSampleId :



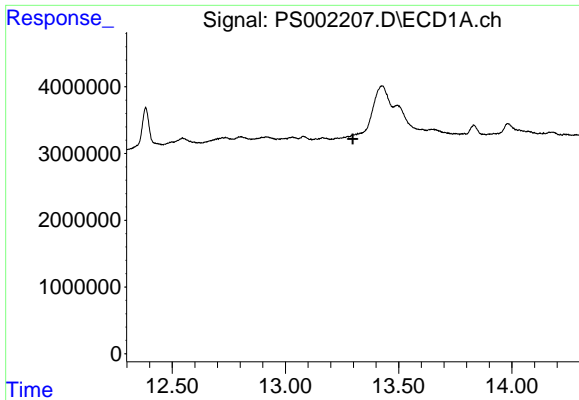
#7 MCPA
 R.T.: 11.769 min
 Delta R.T.: -0.026 min
 Response: 23442315
 Conc: 17.32 ug/ml



#8 DICHLORPROP
 R.T.: 0.000 min
 Exp R.T. : 12.937 min
 Response: 0
 Conc: N.D.



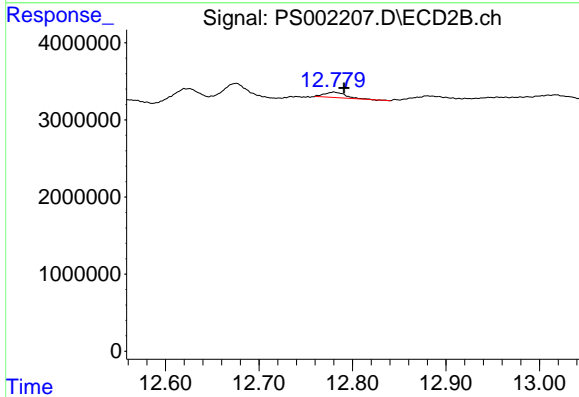
#8 DICHLORPROP
 R.T.: 12.272 min
 Delta R.T.: -0.048 min
 Response: 1680877
 Conc: 5.23 ng/ml



#9 2,4-D

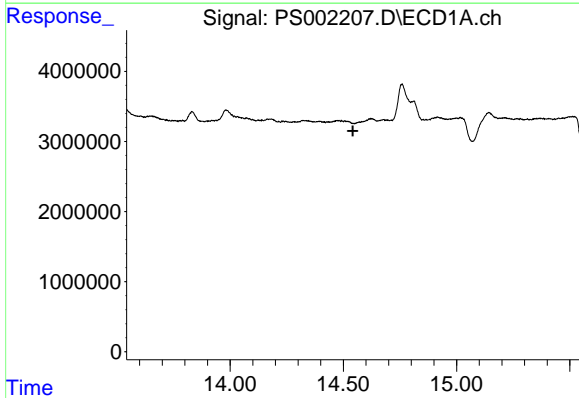
R.T.: 0.000 min
 Exp R.T.: 13.298 min
 Response: 0
 Conc: N.D.

Instrument :
 ECD_S
 ClientSampled :



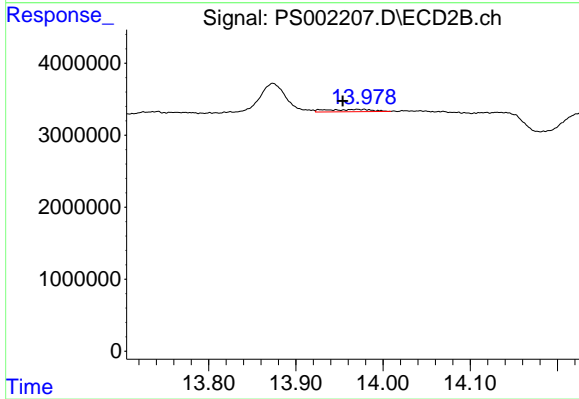
#9 2,4-D

R.T.: 12.780 min
 Delta R.T.: -0.011 min
 Response: 1082308
 Conc: 2.54 ng/ml



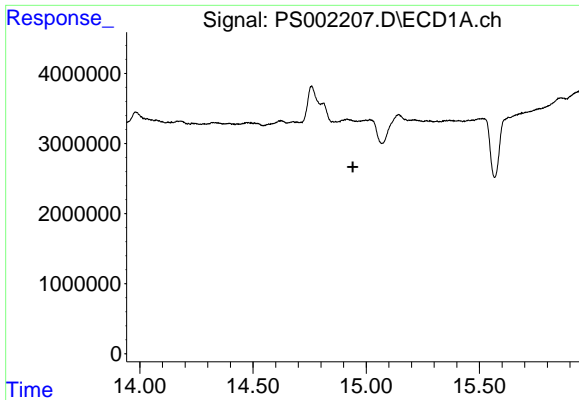
#11 2,4,5-TP (SILVEX)

R.T.: 0.000 min
 Exp R.T.: 14.542 min
 Response: 0
 Conc: N.D.



#11 2,4,5-TP (SILVEX)

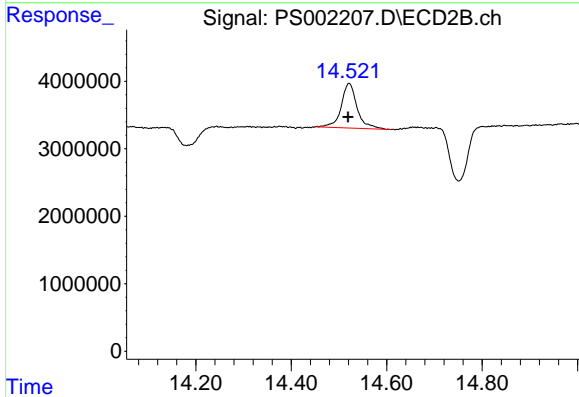
R.T.: 13.971 min
 Delta R.T.: 0.017 min
 Response: 1183813
 Conc: 0.65 ng/ml



#12 2,4,5-T

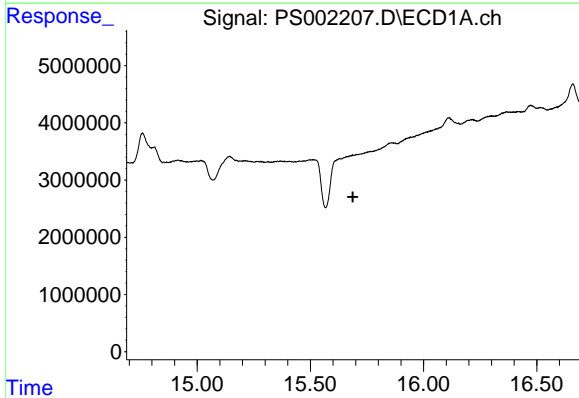
R.T.: 0.000 min
 Exp R.T.: 14.941 min
 Response: 0
 Conc: N.D.

Instrument :
 ECD_S
 ClientSampleId :



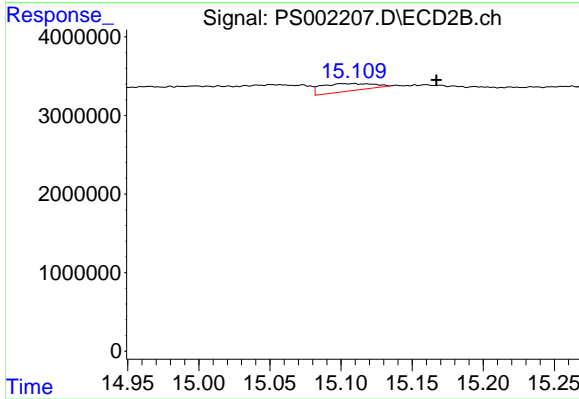
#12 2,4,5-T

R.T.: 14.521 min
 Delta R.T.: 0.002 min
 Response: 15278742
 Conc: 10.20 ng/ml



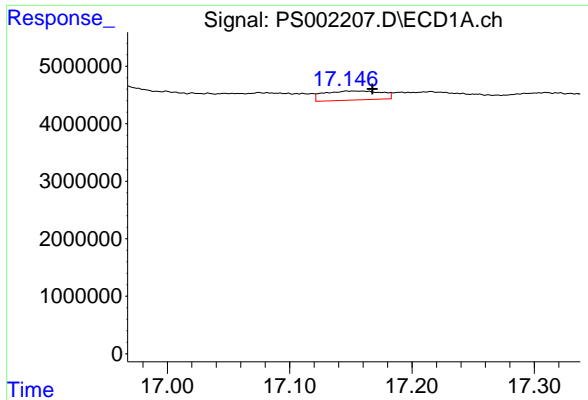
#13 2,4-DB

R.T.: 0.000 min
 Exp R.T.: 15.688 min
 Response: 0
 Conc: N.D.



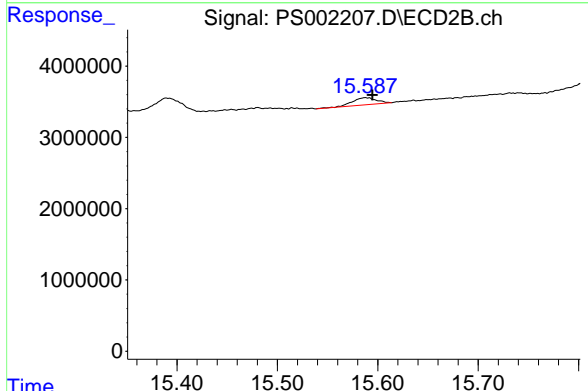
#13 2,4-DB

R.T.: 15.101 min
 Delta R.T.: -0.066 min
 Response: 2412990
 Conc: 10.89 ng/ml

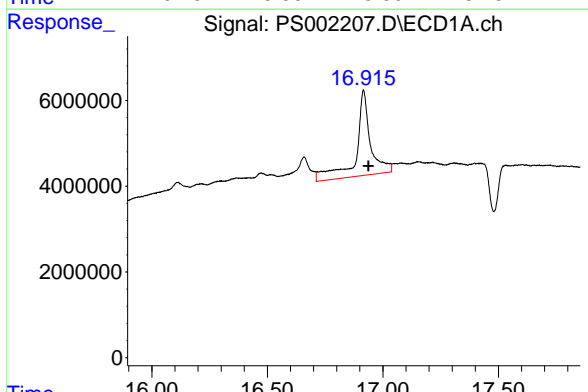


#14 DINOSEB
 R.T.: 17.151 min
 Delta R.T.: -0.016 min
 Response: 5146764
 Conc: 3.76 ng/ml

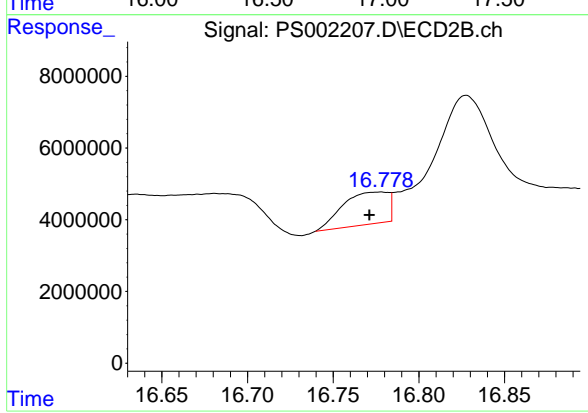
Instrument :
 ECD_S
 ClientSampleId :



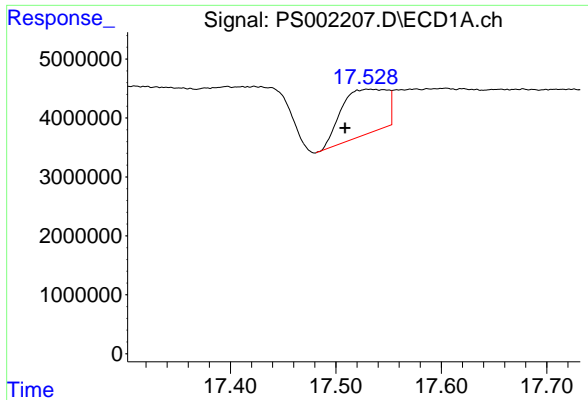
#14 DINOSEB
 R.T.: 15.588 min
 Delta R.T.: -0.007 min
 Response: 1691641
 Conc: 1.34 ng/ml



#15 Picloram
 R.T.: 16.916 min
 Delta R.T.: -0.021 min
 Response: 86251582
 Conc: 36.16 ng/ml



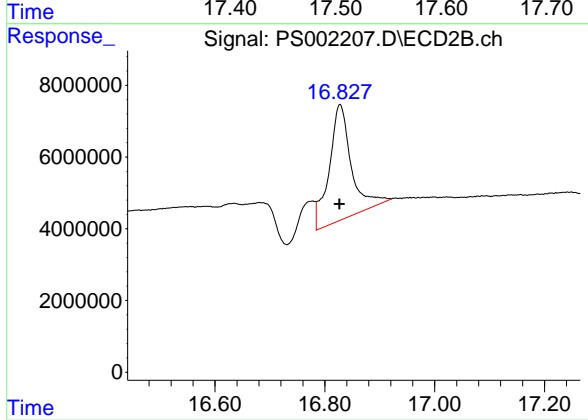
#15 Picloram
 R.T.: 16.778 min
 Delta R.T.: 0.006 min
 Response: 16633572
 Conc: 7.35 ng/ml



#16 DCPA

R.T.: 17.532 min
Delta R.T.: 0.024 min
Response: 23090545
Conc: 9.84 ng/ml

Instrument :
ECD_S
ClientSampleId :



#16 DCPA

R.T.: 16.828 min
Delta R.T.: 0.000 min
Response: 89942190
Conc: 37.98 ng/ml