

Data Path : Z:\pestpcbsrv\HPCHEM1\ECD_S\Data\PS103018\
 Data File : PS002213.D
 Signal(s) : Signal #1: ECD1A.ch Signal #2: ECD2B.ch
 Acq On : 31 Oct 2018 01:02
 Operator : EI\SJ
 Sample : J5665-05
 Misc :
 ALS Vial : 21 Sample Multiplier: 1

Instrument :
 ECD_S
 ClientSampleId :

Integration File signal 1: autoint1.e
 Integration File signal 2: autoint2.e
 Quant Time: Oct 31 02:36:14 2018
 Quant Method : Z:\pestpcbsrv\HPCHEM1\ECD_S\Method\PS102618.M
 Quant Title : 8080.M
 QLast Update : Sat Oct 27 01:34:10 2018
 Response via : Initial Calibration
 Integrator: ChemStation

Volume Inj. : 2 µl
 Signal #1 Phase : Rtx-CLPesticides Signal #2 Phase: Rtx-CLPesticides2
 Signal #1 Info : 30M x 0.32mm x0.5 Signal #2 Info : 30M x 0.32mm x 0.25µm

	Compound	RT#1	RT#2	Resp#1	Resp#2	ng/ml	ng/ml

System Monitoring Compounds							
4) S	2,4-DCAA	11.436	10.926	92938347	67716332	295.337	188.573 #
Target Compounds							
1) T	Dalapon	2.901	2.339	46254121	90071405	100.845	199.491 #
2) T	3,5-DICHL...	0.000	9.105	0	1418455	N.D.	3.198 #
3) T	4-Nitroph...	11.003	10.048	19477299	17785967	116.750	99.747
5) T	DICAMBA	11.809	11.167	18104293	-9232052	13.633	N.D. #
6) T	MCPD	12.115	11.425	9101528	1453272	9.213	1.689 #
7) T	MCPA	12.342	11.785	2473300	21315374	1.647	15.749 #
8) T	DICHLORPROP	12.939	12.342	27139004	69219	77.929	0.216 #
9) T	2,4-D	0.000	12.725	0	45711490	N.D.	107.331 #
10) T	Pentachlo...	13.662	13.318	109.8E6	25515171	22.823	5.432 #
11) T	2,4,5-TP ...	0.000	13.938	0	1448380	N.D.	0.792 #
12) T	2,4,5-T	14.977	14.564	19080302	8194070	10.646	5.472 #
13) T	2,4-DB	15.638	15.156	4793264	3745712	20.413	16.906
14) T	DINOSEB	17.140	15.550	31185596	43841277	22.762	34.633 #
15) T	Picloram	16.957	16.770	36622419	31214823	15.353	13.798
16) T	DCPA	17.553	16.802	12085233	59538150	5.148	25.144 #

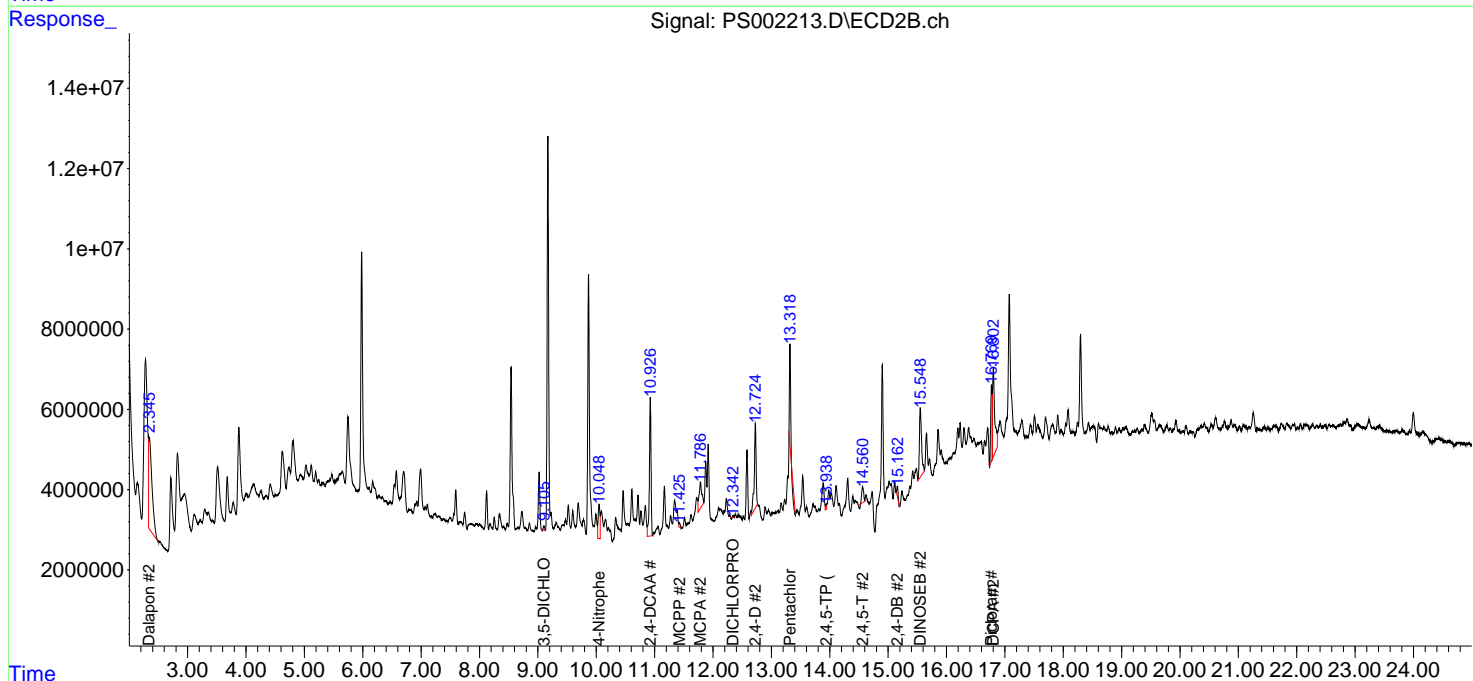
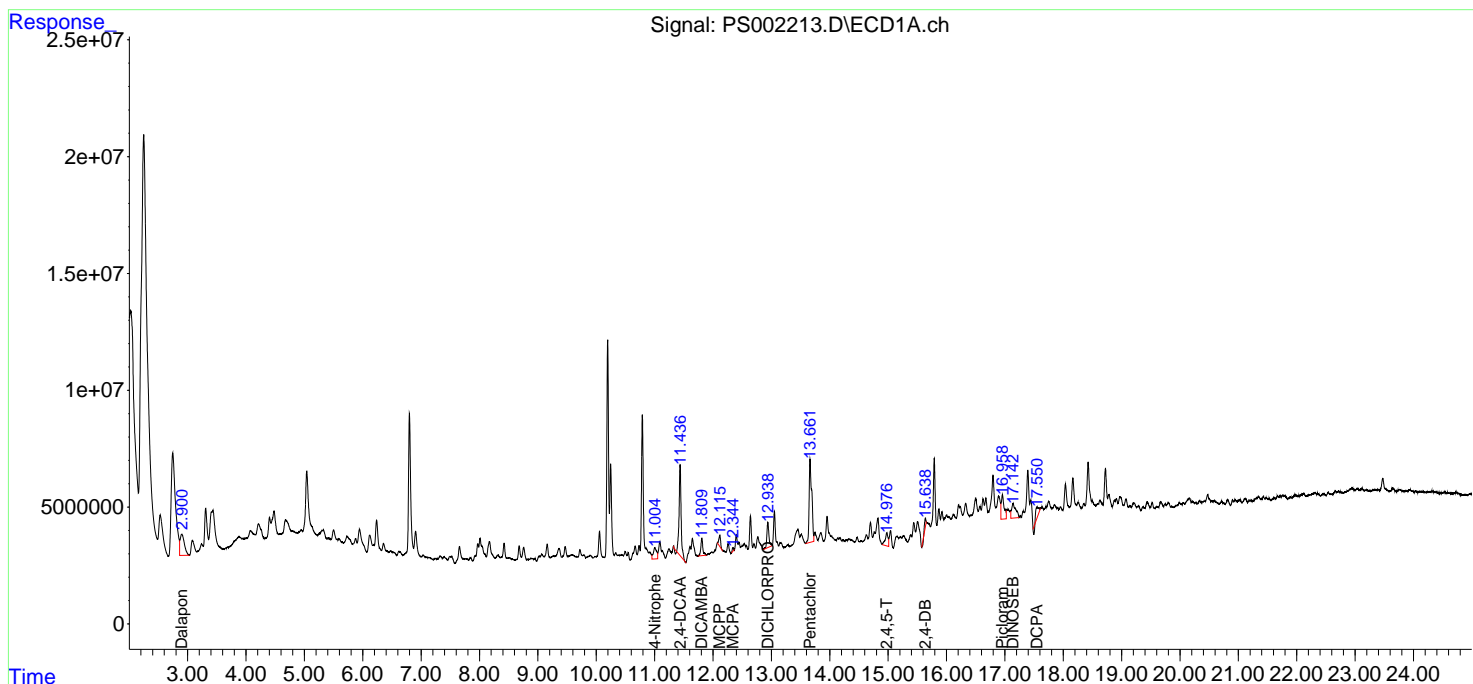
(f)=RT Delta > 1/2 Window (#)=Amounts differ by > 25% (m)=manual int.

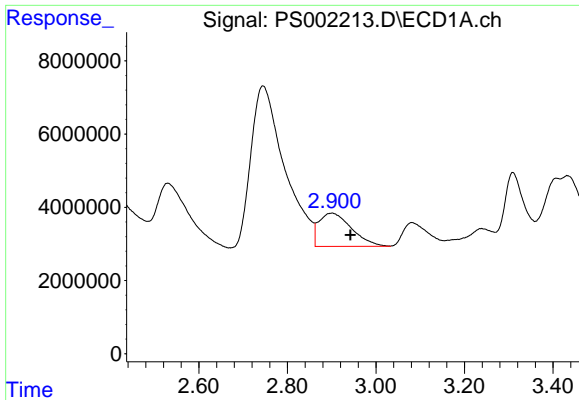
Data Path : Z:\pestpcbsrv\HPCHEM1\ECD_S\Data\PS103018\
 Data File : PS002213.D
 Signal(s) : Signal #1: ECD1A.ch Signal #2: ECD2B.ch
 Acq On : 31 Oct 2018 01:02
 Operator : EI\SJ
 Sample : J5665-05
 Misc :
 ALS Vial : 21 Sample Multiplier: 1

Instrument :
 ECD_S
 ClientSampled :

Integration File signal 1: autoint1.e
 Integration File signal 2: autoint2.e
 Quant Time: Oct 31 02:36:14 2018
 Quant Method : Z:\pestpcbsrv\HPCHEM1\ECD_S\Method\PS102618.M
 Quant Title : 8080.M
 QLast Update : Sat Oct 27 01:34:10 2018
 Response via : Initial Calibration
 Integrator: ChemStation

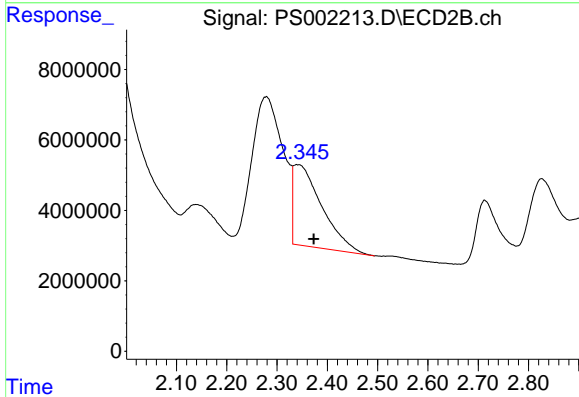
Volume Inj. : 2 µl
 Signal #1 Phase : Rtx-CLPesticides Signal #2 Phase: Rtx-CLPesticides2
 Signal #1 Info : 30M x 0.32mm x0.5 Signal #2 Info : 30M x 0.32mm x 0.25µm



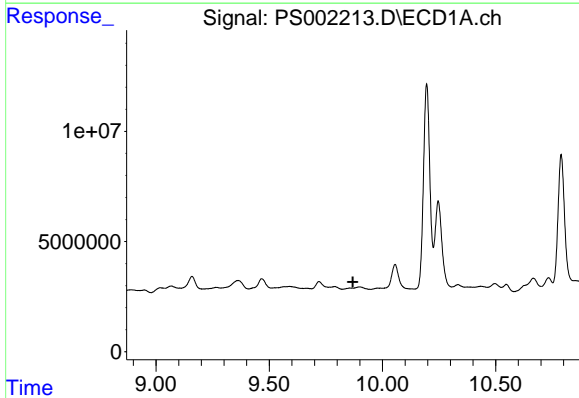


#1 Dalapon
 R.T.: 2.901 min
 Delta R.T.: -0.042 min
 Response: 46254121
 Conc: 100.84 ng/ml

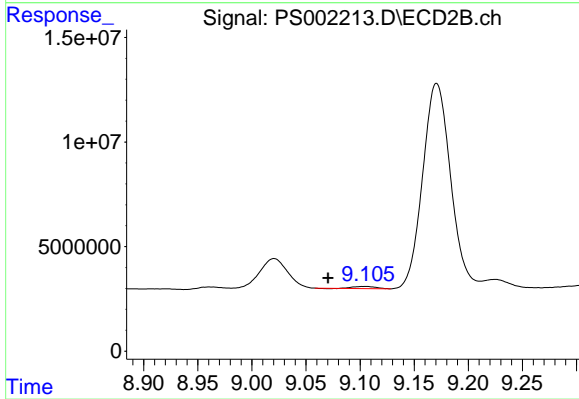
Instrument :
 ECD_S
 ClientSampleId :



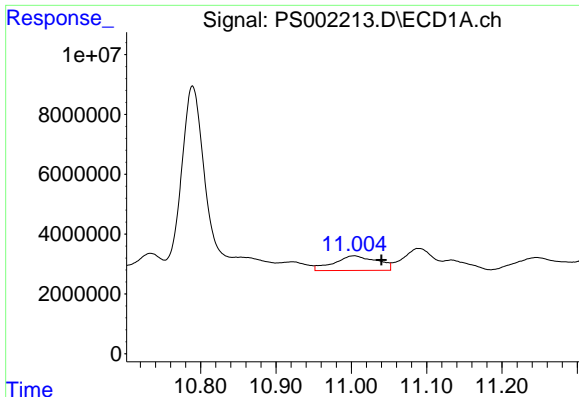
#1 Dalapon
 R.T.: 2.339 min
 Delta R.T.: -0.035 min
 Response: 90071405
 Conc: 199.49 ng/ml



#2 3,5-DICHLOROBENZOIC ACID
 R.T.: 0.000 min
 Exp R.T. : 9.870 min
 Response: 0
 Conc: N.D.



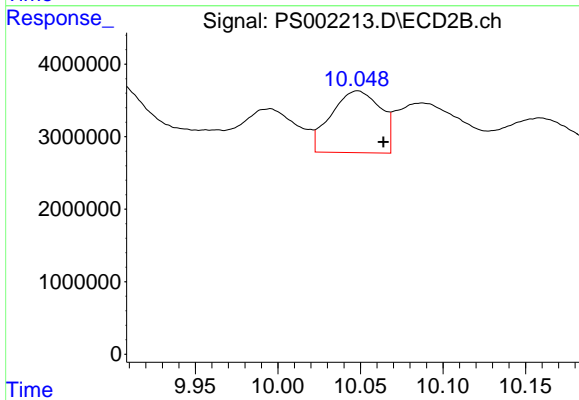
#2 3,5-DICHLOROBENZOIC ACID
 R.T.: 9.105 min
 Delta R.T.: 0.035 min
 Response: 1418455
 Conc: 3.20 ng/ml



#3 4-Nitrophenol

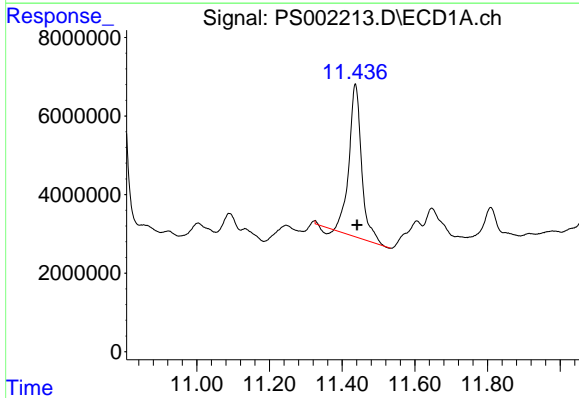
R.T.: 11.003 min
 Delta R.T.: -0.037 min
 Response: 19477299
 Conc: 116.75 ng/ml

Instrument :
 ECD_S
 ClientSampleId :



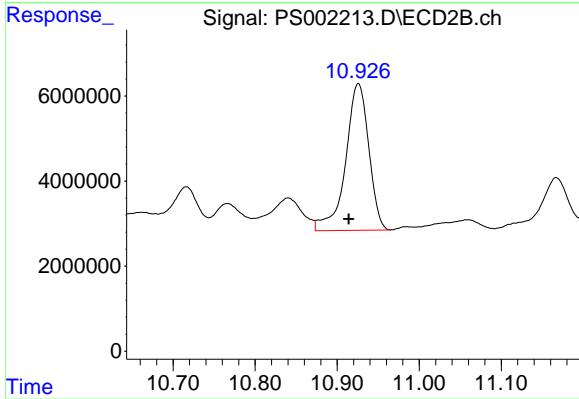
#3 4-Nitrophenol

R.T.: 10.048 min
 Delta R.T.: -0.015 min
 Response: 17785967
 Conc: 99.75 ng/ml



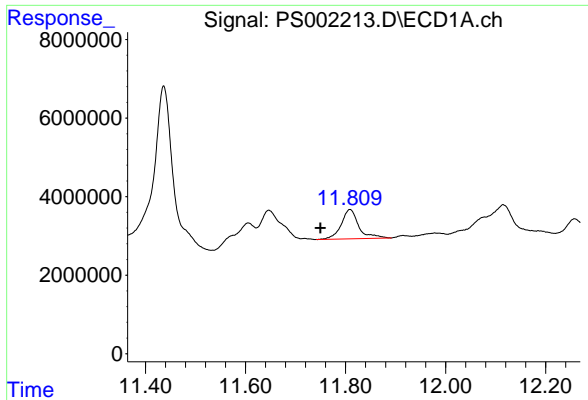
#4 2,4-DCAA

R.T.: 11.436 min
 Delta R.T.: -0.005 min
 Response: 92938347
 Conc: 295.34 ng/ml



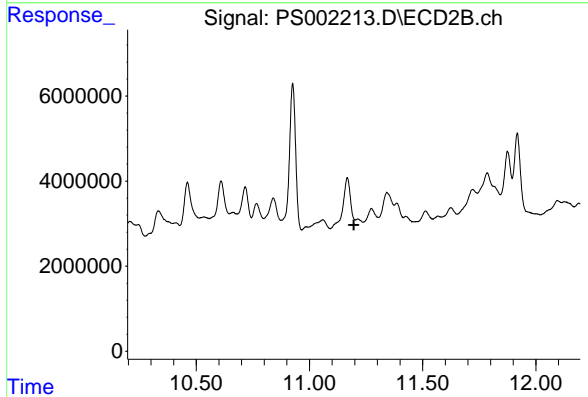
#4 2,4-DCAA

R.T.: 10.926 min
 Delta R.T.: 0.012 min
 Response: 67716332
 Conc: 188.57 ng/ml

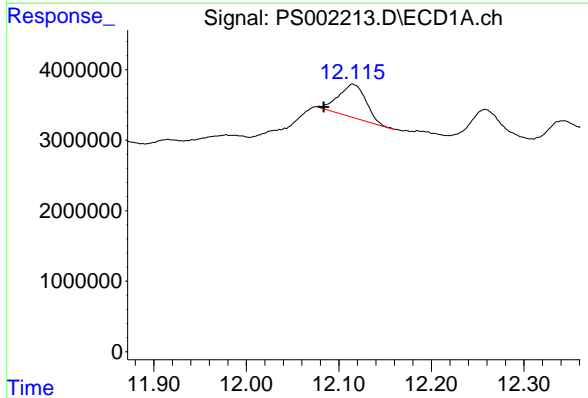


#5 DICAMBA
 R.T.: 11.809 min
 Delta R.T.: 0.059 min
 Response: 18104293
 Conc: 13.63 ng/ml

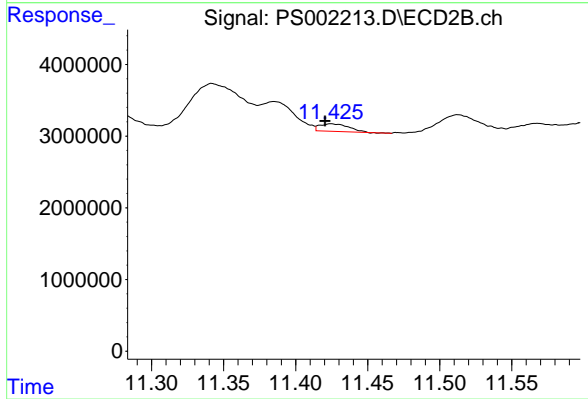
Instrument :
 ECD_S
 ClientSampled :



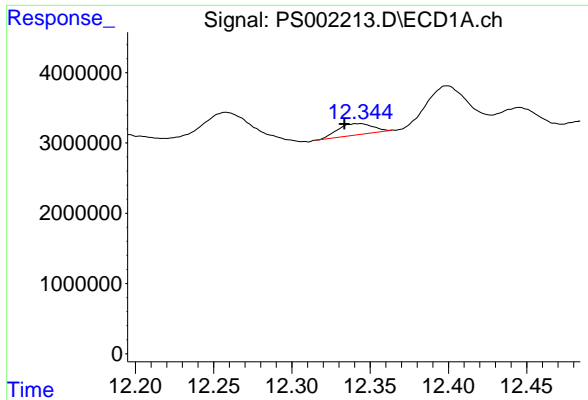
#5 DICAMBA
 R.T.: 11.167 min
 Delta R.T.: -0.030 min
 Response: -9232052
 Conc: N.D.



#6 MCP
 R.T.: 12.115 min
 Delta R.T.: 0.032 min
 Response: 9101528
 Conc: 9.21 ug/ml

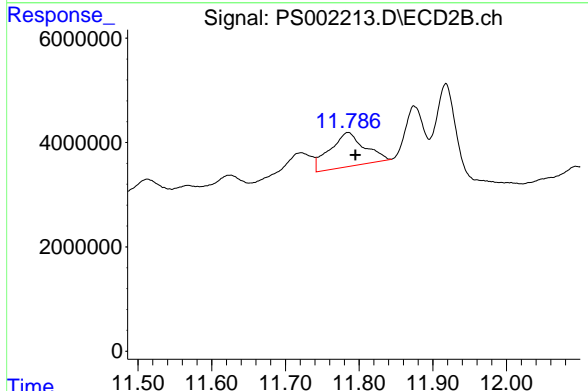


#6 MCP
 R.T.: 11.425 min
 Delta R.T.: 0.004 min
 Response: 1453272
 Conc: 1.69 ug/ml

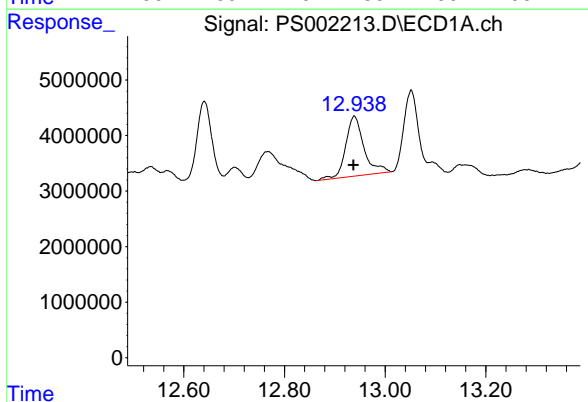


#7 MCPA
 R.T.: 12.342 min
 Delta R.T.: 0.009 min
 Response: 2473300
 Conc: 1.65 ug/ml

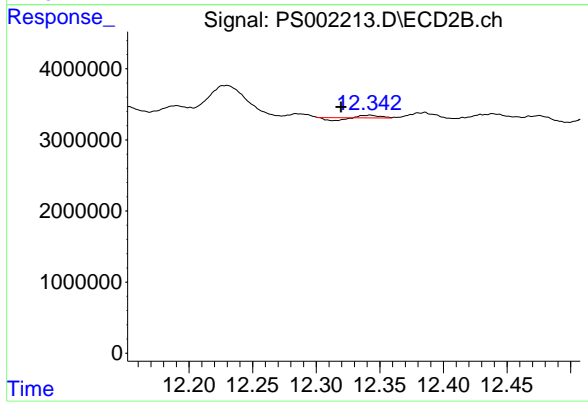
Instrument :
 ECD_S
 ClientSampled :



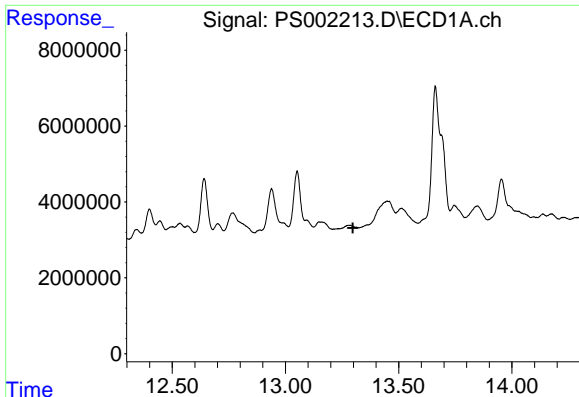
#7 MCPA
 R.T.: 11.785 min
 Delta R.T.: -0.010 min
 Response: 21315374
 Conc: 15.75 ug/ml



#8 DICHLORPROP
 R.T.: 12.939 min
 Delta R.T.: 0.002 min
 Response: 27139004
 Conc: 77.93 ng/ml



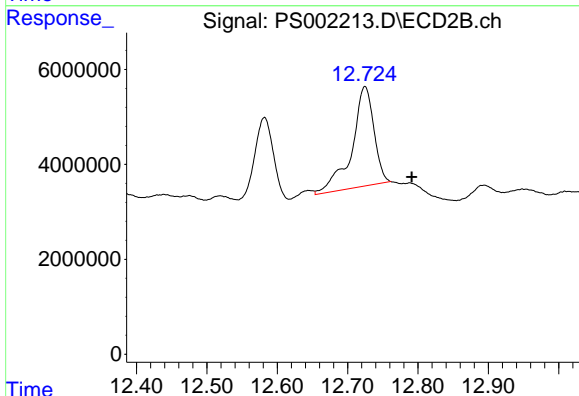
#8 DICHLORPROP
 R.T.: 12.342 min
 Delta R.T.: 0.023 min
 Response: 69219
 Conc: 0.22 ng/ml



#9 2,4-D

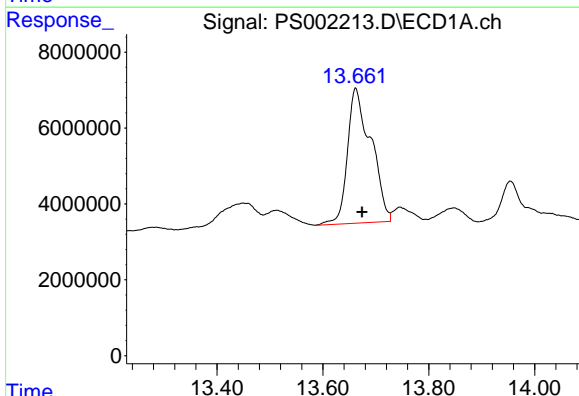
R.T.: 0.000 min
 Exp R.T.: 13.298 min
 Response: 0
 Conc: N.D.

Instrument :
 ECD_S
 ClientSampled :



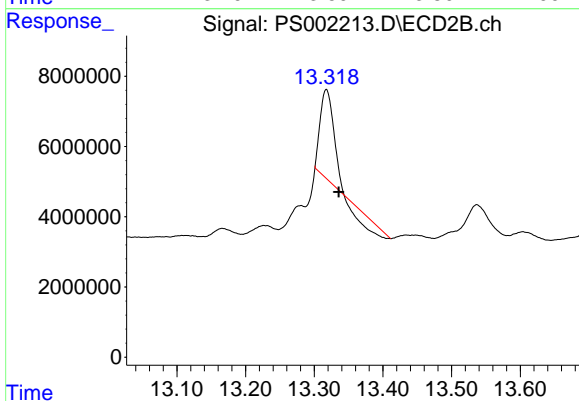
#9 2,4-D

R.T.: 12.725 min
 Delta R.T.: -0.066 min
 Response: 45711490
 Conc: 107.33 ng/ml



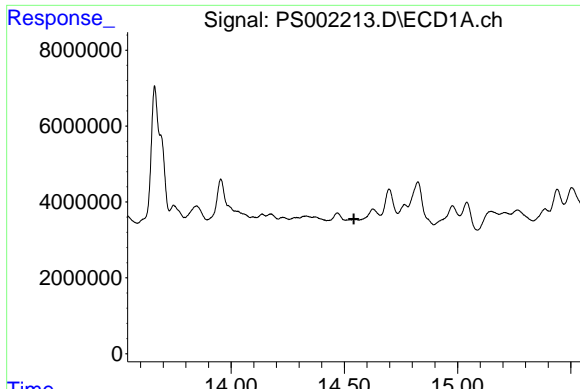
#10 Pentachlorophenol

R.T.: 13.662 min
 Delta R.T.: -0.012 min
 Response: 109796321
 Conc: 22.82 ng/ml



#10 Pentachlorophenol

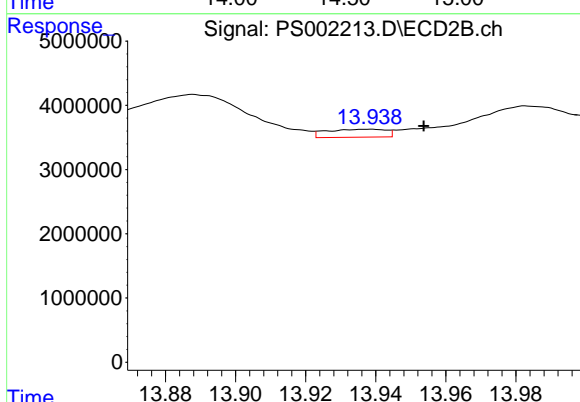
R.T.: 13.318 min
 Delta R.T.: -0.018 min
 Response: 25515171
 Conc: 5.43 ng/ml



#11 2,4,5-TP (SILVEX)

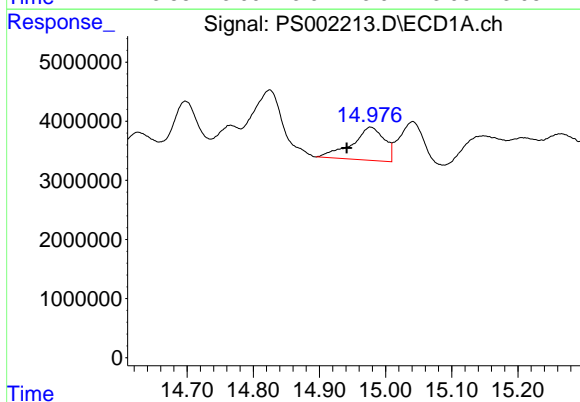
R.T.: 0.000 min
 Exp R.T.: 14.542 min
 Response: 0
 Conc: N.D.

Instrument :
 ECD_S
 ClientSampleId :



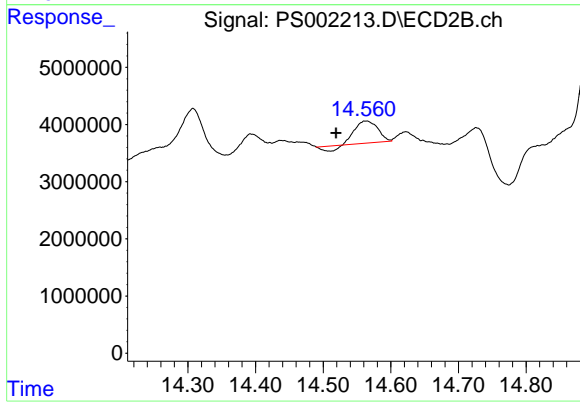
#11 2,4,5-TP (SILVEX)

R.T.: 13.938 min
 Delta R.T.: -0.016 min
 Response: 1448380
 Conc: 0.79 ng/ml



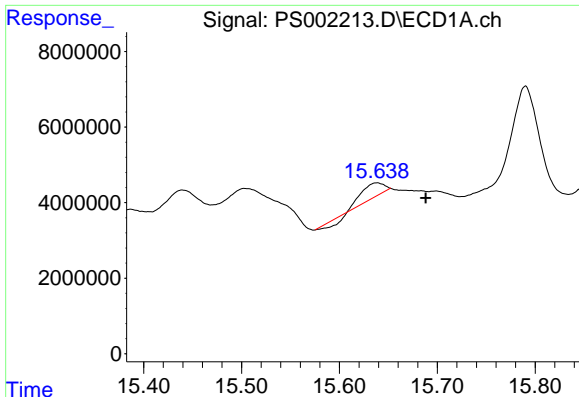
#12 2,4,5-T

R.T.: 14.977 min
 Delta R.T.: 0.036 min
 Response: 19080302
 Conc: 10.65 ng/ml



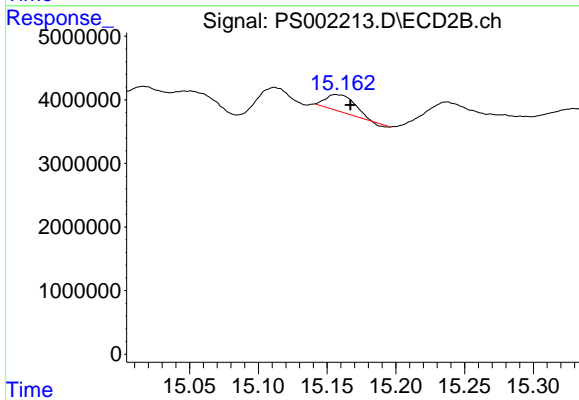
#12 2,4,5-T

R.T.: 14.564 min
 Delta R.T.: 0.045 min
 Response: 8194070
 Conc: 5.47 ng/ml

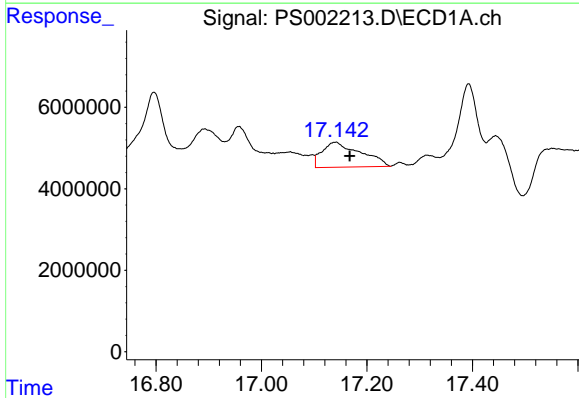


#13 2,4-DB
 R.T.: 15.638 min
 Delta R.T.: -0.050 min
 Response: 4793264
 Conc: 20.41 ng/ml

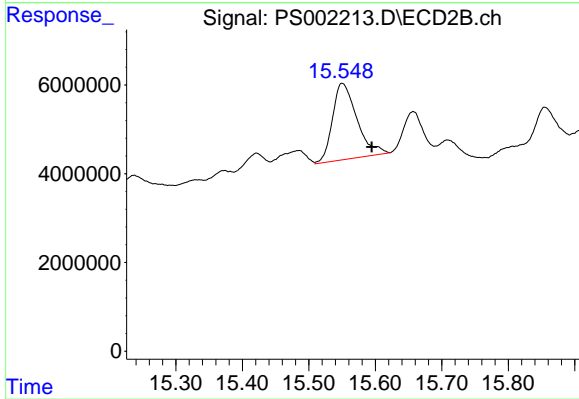
Instrument :
 ECD_S
 ClientSampleId :



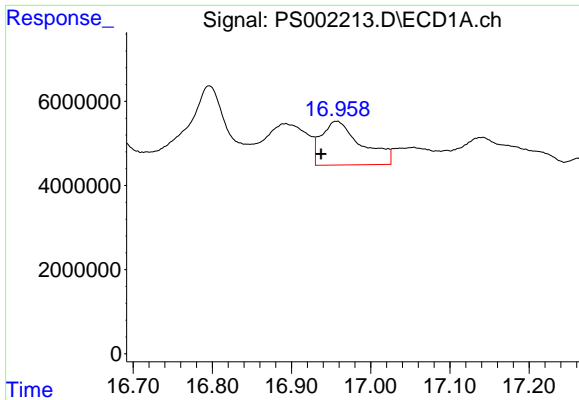
#13 2,4-DB
 R.T.: 15.156 min
 Delta R.T.: -0.011 min
 Response: 3745712
 Conc: 16.91 ng/ml



#14 DINOSEB
 R.T.: 17.140 min
 Delta R.T.: -0.027 min
 Response: 31185596
 Conc: 22.76 ng/ml

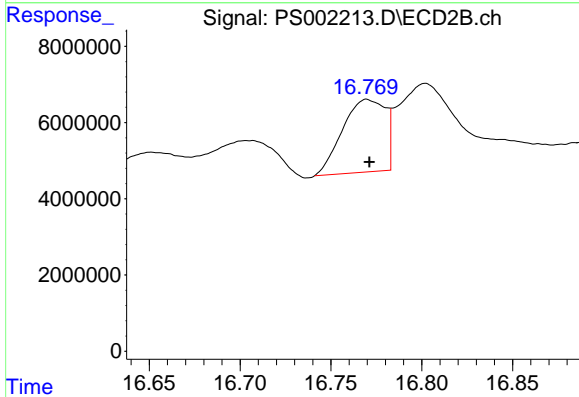


#14 DINOSEB
 R.T.: 15.550 min
 Delta R.T.: -0.045 min
 Response: 43841277
 Conc: 34.63 ng/ml

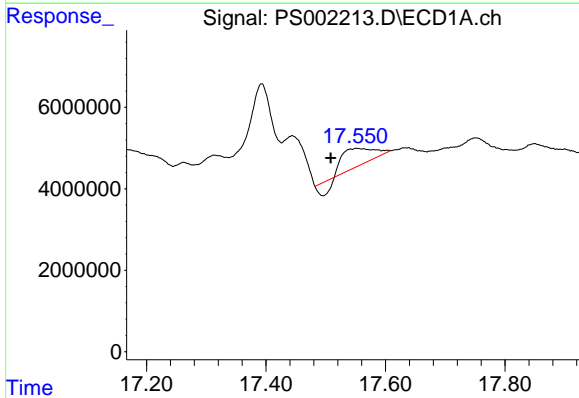


#15 Picloram
 R.T.: 16.957 min
 Delta R.T.: 0.020 min
 Response: 36622419
 Conc: 15.35 ng/ml

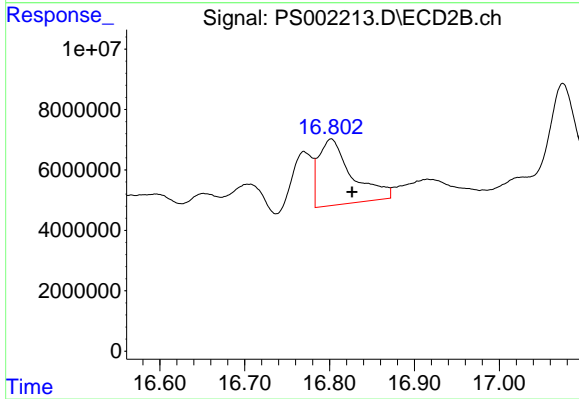
Instrument :
 ECD_S
 ClientSampleId :



#15 Picloram
 R.T.: 16.770 min
 Delta R.T.: -0.002 min
 Response: 31214823
 Conc: 13.80 ng/ml



#16 DCPA
 R.T.: 17.553 min
 Delta R.T.: 0.044 min
 Response: 12085233
 Conc: 5.15 ng/ml



#16 DCPA
 R.T.: 16.802 min
 Delta R.T.: -0.025 min
 Response: 59538150
 Conc: 25.14 ng/ml