

Data Path : Z:\pestpcbsrv\HPCHEM1\ECD_S\Data\PS103018\
 Data File : PS002222.D
 Signal(s) : Signal #1: ECD1A.ch Signal #2: ECD2B.ch
 Acq On : 31 Oct 2018 05:42
 Operator : EI\SJ
 Sample : HSTDCCC750
 Misc :
 ALS Vial : 3 Sample Multiplier: 1

Instrument :
 ECD_S
 ClientSampleId :

Integration File signal 1: autoint1.e
 Integration File signal 2: autoint2.e
 Quant Time: Oct 31 07:55:04 2018
 Quant Method : Z:\pestpcbsrv\HPCHEM1\ECD_S\Method\PS102618.M
 Quant Title : 8080.M
 QLast Update : Sat Oct 27 01:34:10 2018
 Response via : Initial Calibration
 Integrator: ChemStation

Volume Inj. : 2 µl
 Signal #1 Phase : Rtx-CLPesticides Signal #2 Phase: Rtx-CLPesticides2
 Signal #1 Info : 30M x 0.32mm x0.5 Signal #2 Info : 30M x 0.32mm x 0.25µm

	Compound	RT#1	RT#2	Resp#1	Resp#2	ng/ml	ng/ml

System Monitoring Compounds							
4) S	2,4-DCAA	11.451	10.941	234.7E6	267.5E6	745.733	744.835
Target Compounds							
1) T	Dalapon	2.968	2.406	311.5E6	282.7E6	679.228	626.169
2) T	3,5-DICHL...	9.882	9.096	318.2E6	307.3E6	700.887	692.715
3) T	4-Nitroph...	11.043	10.087	123.1E6	115.2E6	737.880	645.948
5) T	DICAMBA	11.761	11.225	958.4E6	921.9E6	721.643	737.671
6) T	MCP P	0.000	11.457	0	61070196	N.D.	70.984 #
7) T	MCPA	12.352	11.760	96191569	30213641	64.063	22.324 #
8) T	DICHLORPROP	12.947	12.349	246.0E6	235.0E6	706.402	731.779
9) T	2,4-D	13.303	12.818	281.9E6	309.6E6	700.613	726.847
10) T	Pentachlo...	13.684	13.366	3503.7E6	3583.6E6	728.312	762.888
11) T	2,4,5-TP ...	14.552	13.983	1378.1E6	1433.7E6	720.445	783.654
12) T	2,4,5-T	14.947	14.513	1311.0E6	1394.5E6	731.484	931.251 #
13) T	2,4-DB	15.693	15.197	168.2E6	172.1E6	716.282	776.656
14) T	DINOSEB	17.175	15.626	982.7E6	994.5E6	717.273	785.631
15) T	Picloram	16.939	16.803	1463.5E6	1847.0E6	613.544	816.461 #
16) T	DCPA	17.516	16.803	1458.8E6	1847.0E6	621.432	780.034 #

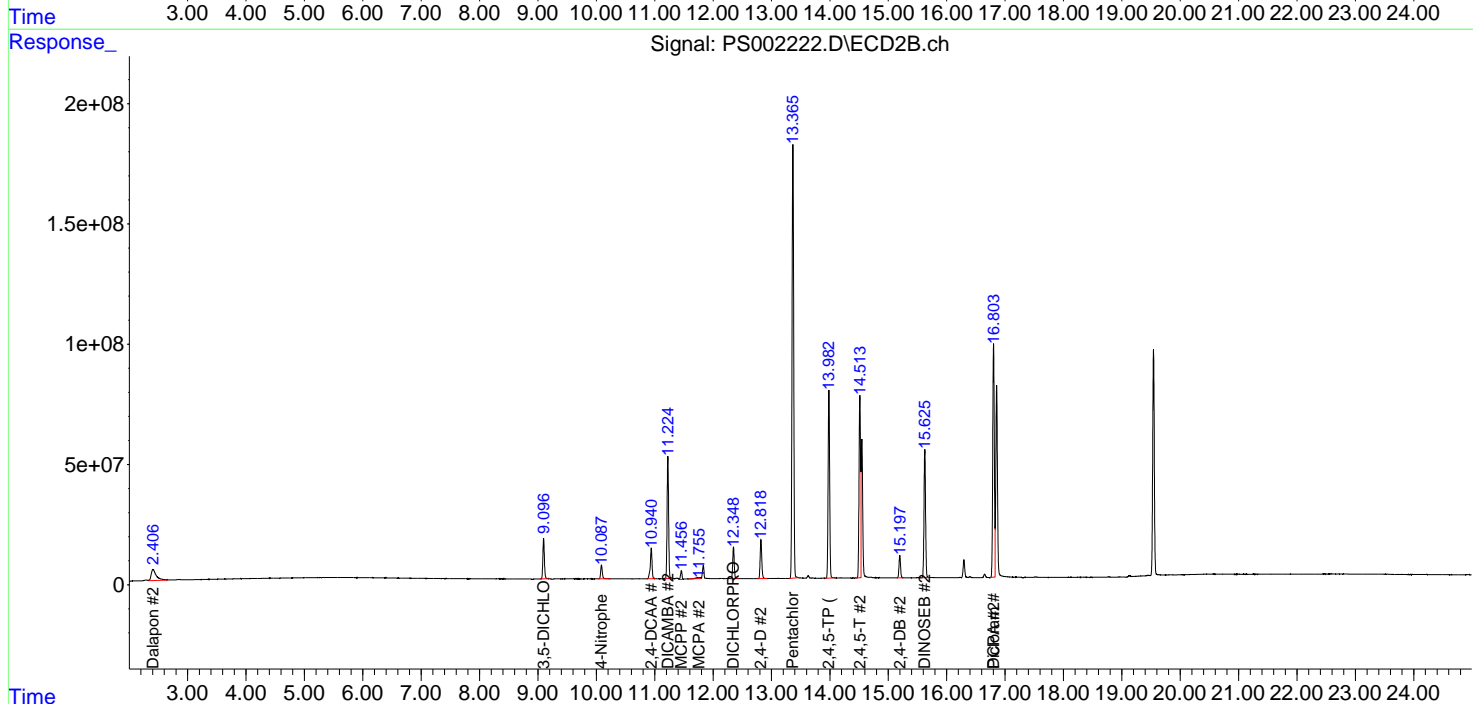
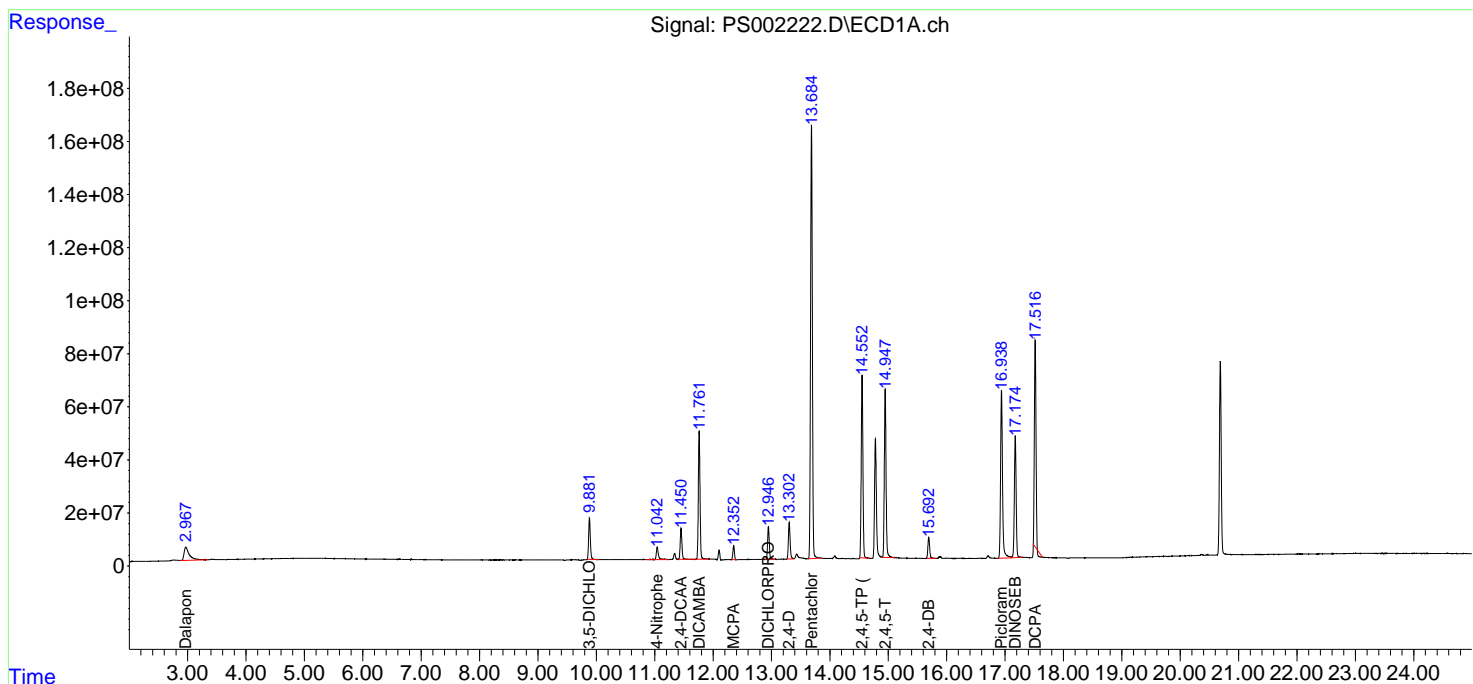
(f)=RT Delta > 1/2 Window (#)=Amounts differ by > 25% (m)=manual int.

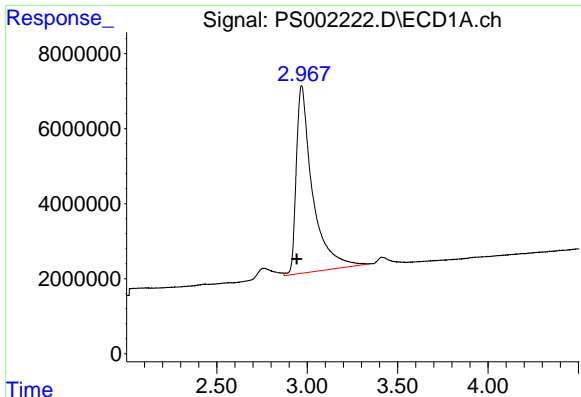
Data Path : Z:\pestpcbsrv\HPCHEM1\ECD_S\Data\PS103018\
 Data File : PS002222.D
 Signal(s) : Signal #1: ECD1A.ch Signal #2: ECD2B.ch
 Acq On : 31 Oct 2018 05:42
 Operator : EI\SJ
 Sample : HSTDCCC750
 Misc :
 ALS Vial : 3 Sample Multiplier: 1

Instrument :
 ECD_S
 ClientSampled :

Integration File signal 1: autoint1.e
 Integration File signal 2: autoint2.e
 Quant Time: Oct 31 07:55:04 2018
 Quant Method : Z:\pestpcbsrv\HPCHEM1\ECD_S\Method\PS102618.M
 Quant Title : 8080.M
 QLast Update : Sat Oct 27 01:34:10 2018
 Response via : Initial Calibration
 Integrator: ChemStation

Volume Inj. : 2 µl
 Signal #1 Phase : Rtx-CLPesticides Signal #2 Phase: Rtx-CLPesticides2
 Signal #1 Info : 30M x 0.32mm x0.5 Signal #2 Info : 30M x 0.32mm x 0.25µm

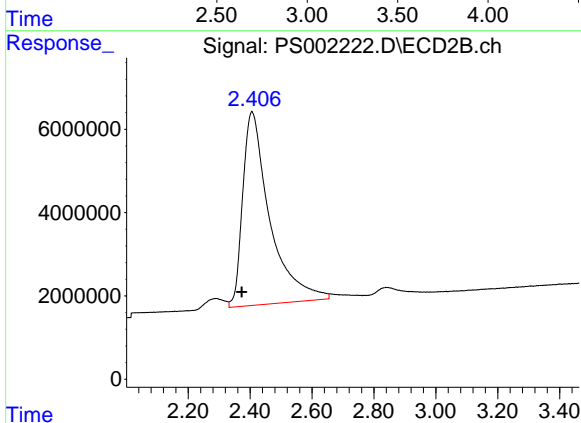




#1 Dalapon

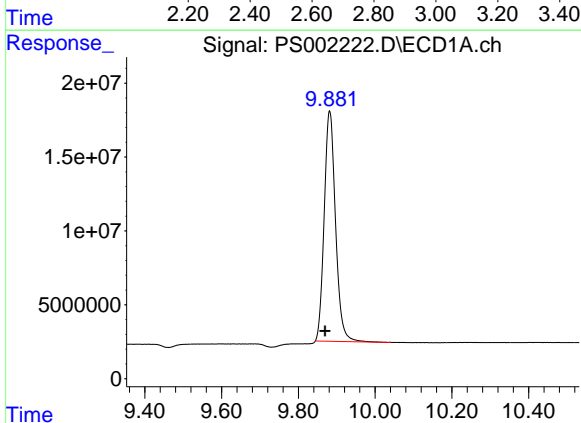
R.T.: 2.968 min
 Delta R.T.: 0.026 min
 Response: 311539511
 Conc: 679.23 ng/ml

Instrument :
 ECD_S
 ClientSampled :



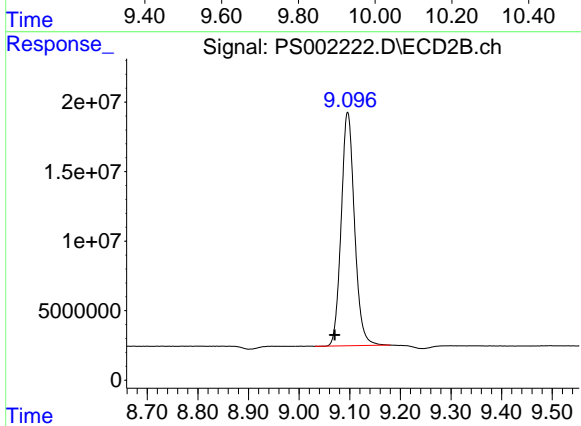
#1 Dalapon

R.T.: 2.406 min
 Delta R.T.: 0.033 min
 Response: 282719854
 Conc: 626.17 ng/ml



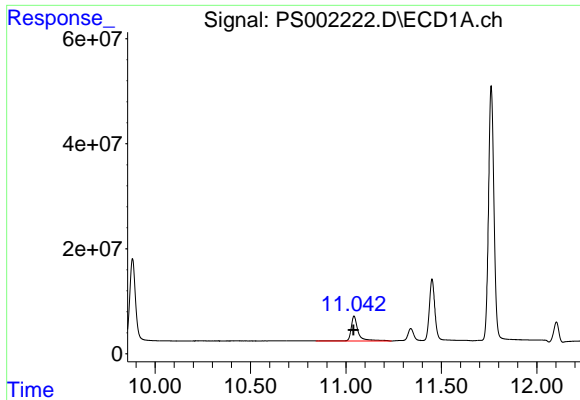
#2 3,5-DICHLOROBENZOIC ACID

R.T.: 9.882 min
 Delta R.T.: 0.012 min
 Response: 318154055
 Conc: 700.89 ng/ml



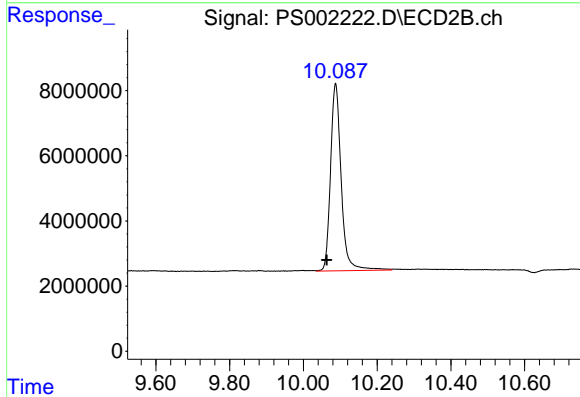
#2 3,5-DICHLOROBENZOIC ACID

R.T.: 9.096 min
 Delta R.T.: 0.026 min
 Response: 307256991
 Conc: 692.71 ng/ml

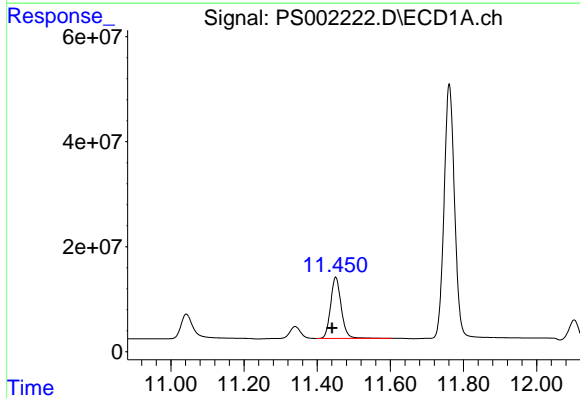


#3 4-Nitrophenol
R.T.: 11.043 min
Delta R.T.: 0.003 min
Response: 123099729
Conc: 737.88 ng/ml

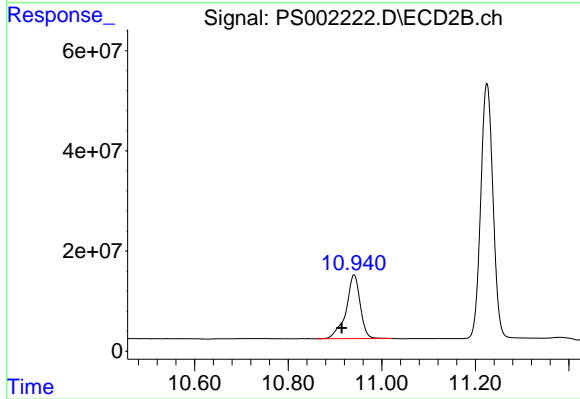
Instrument :
ECD_S
ClientSampled :



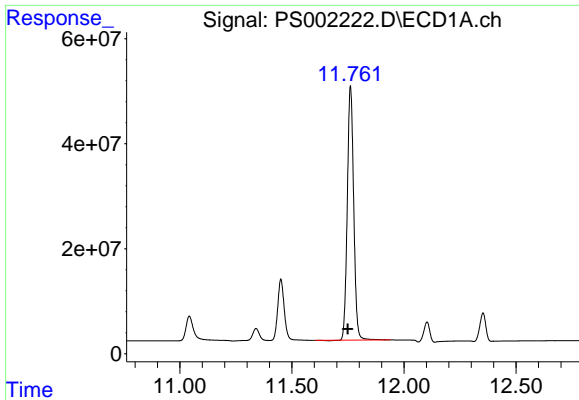
#3 4-Nitrophenol
R.T.: 10.087 min
Delta R.T.: 0.024 min
Response: 115179372
Conc: 645.95 ng/ml



#4 2,4-DCAA
R.T.: 11.451 min
Delta R.T.: 0.010 min
Response: 234671614
Conc: 745.73 ng/ml



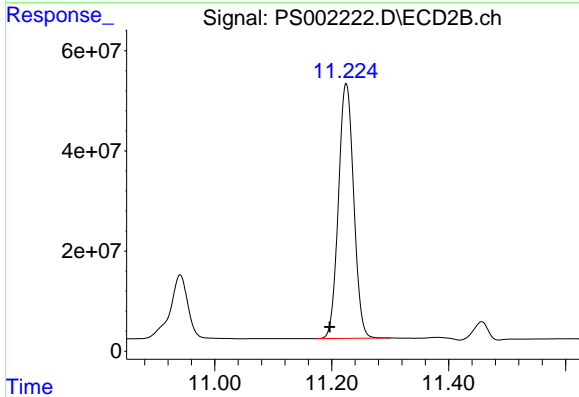
#4 2,4-DCAA
R.T.: 10.941 min
Delta R.T.: 0.026 min
Response: 267468676
Conc: 744.83 ng/ml



#5 DICAMBA

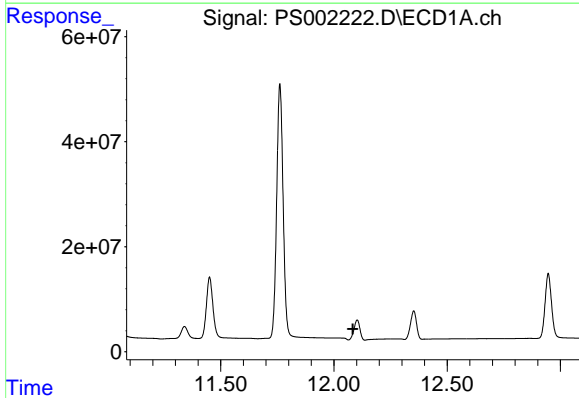
R.T.: 11.761 min
 Delta R.T.: 0.012 min
 Response: 958355298
 Conc: 721.64 ng/ml

Instrument :
 ECD_S
 ClientSampled :



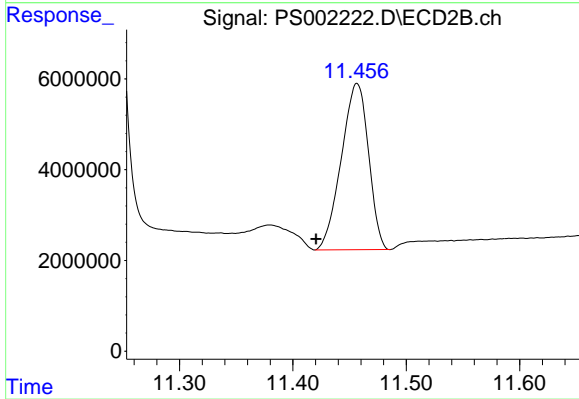
#5 DICAMBA

R.T.: 11.225 min
 Delta R.T.: 0.028 min
 Response: 921866361
 Conc: 737.67 ng/ml



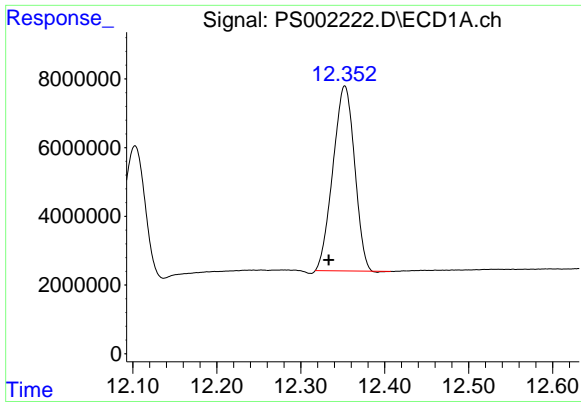
#6 MCPP

R.T.: 0.000 min
 Exp R.T. : 12.084 min
 Response: 0
 Conc: N.D.



#6 MCPP

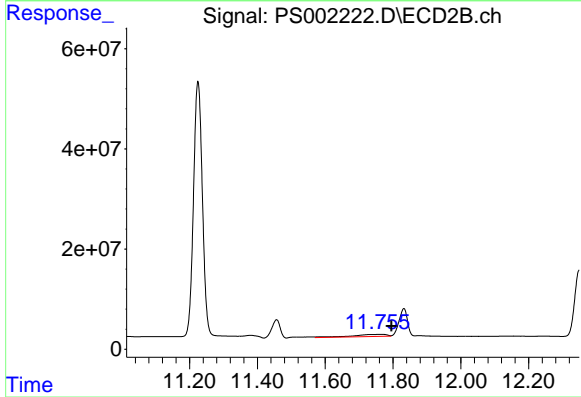
R.T.: 11.457 min
 Delta R.T.: 0.036 min
 Response: 61070196
 Conc: 70.98 ug/ml



#7 MCPA

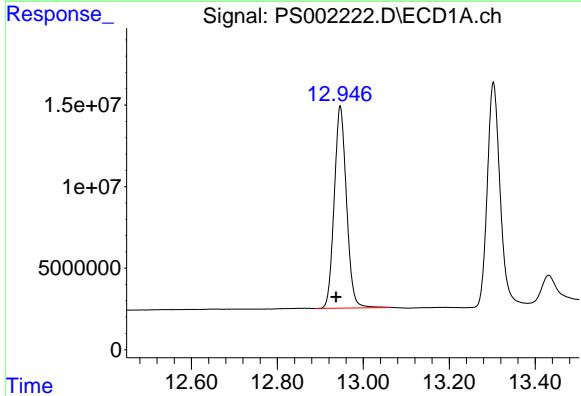
R.T.: 12.352 min
 Delta R.T.: 0.019 min
 Response: 96191569
 Conc: 64.06 ug/ml

Instrument :
 ECD_S
 ClientSampleId :



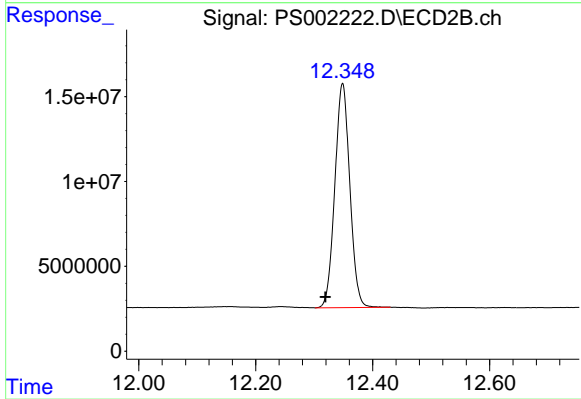
#7 MCPA

R.T.: 11.760 min
 Delta R.T.: -0.035 min
 Response: 30213641
 Conc: 22.32 ug/ml



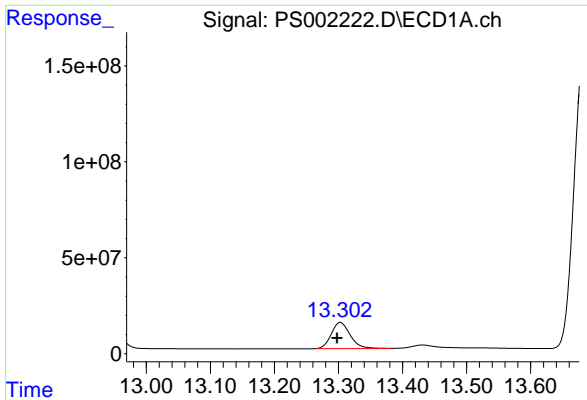
#8 DICHLORPROP

R.T.: 12.947 min
 Delta R.T.: 0.009 min
 Response: 246006322
 Conc: 706.40 ng/ml



#8 DICHLORPROP

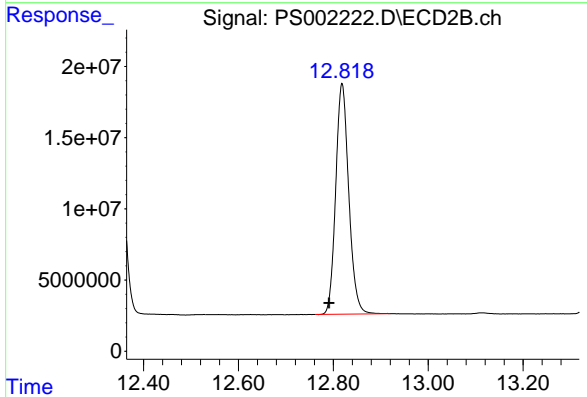
R.T.: 12.349 min
 Delta R.T.: 0.029 min
 Response: 234999100
 Conc: 731.78 ng/ml



#9 2,4-D

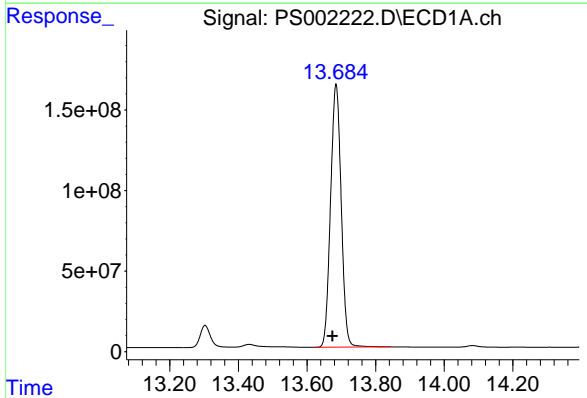
R.T.: 13.303 min
 Delta R.T.: 0.005 min
 Response: 281920444
 Conc: 700.61 ng/ml

Instrument :
 ECD_S
 ClientSampled :



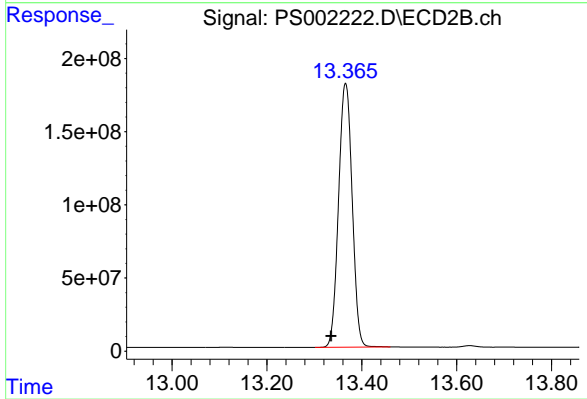
#9 2,4-D

R.T.: 12.818 min
 Delta R.T.: 0.028 min
 Response: 309558878
 Conc: 726.85 ng/ml



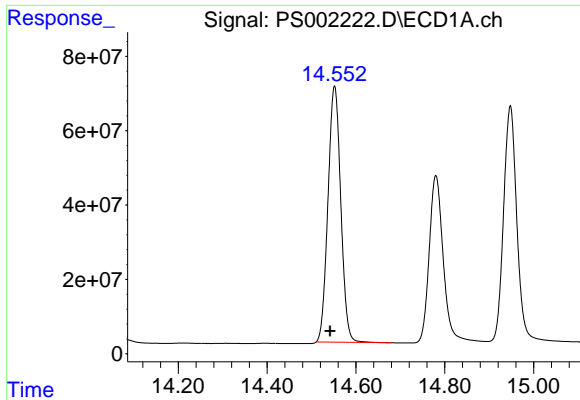
#10 Pentachlorophenol

R.T.: 13.684 min
 Delta R.T.: 0.010 min
 Response: 3503674262
 Conc: 728.31 ng/ml



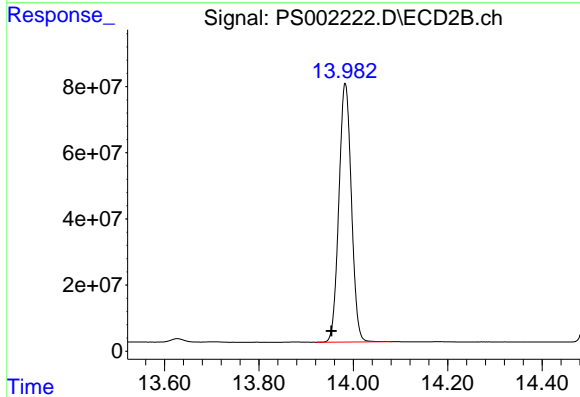
#10 Pentachlorophenol

R.T.: 13.366 min
 Delta R.T.: 0.030 min
 Response: 3583620085
 Conc: 762.89 ng/ml

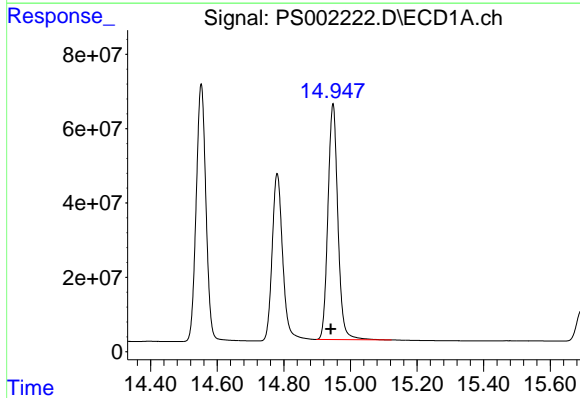


#11 2,4,5-TP (SILVEX)
 R.T.: 14.552 min
 Delta R.T.: 0.010 min
 Response: 1378094424
 Conc: 720.45 ng/ml

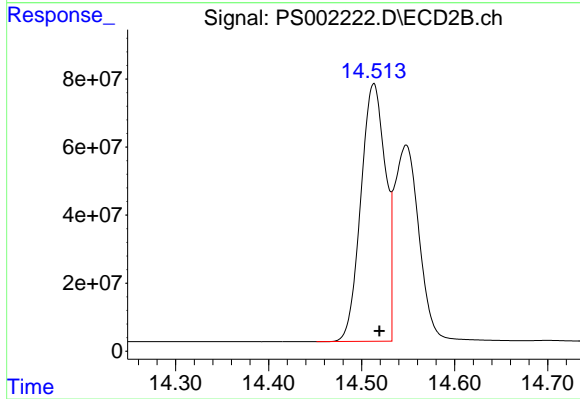
Instrument :
 ECD_S
 ClientSampled :



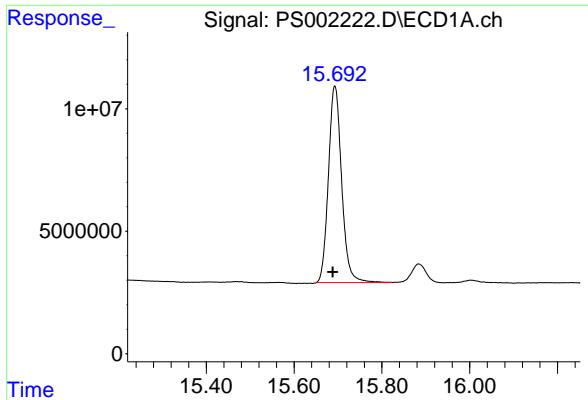
#11 2,4,5-TP (SILVEX)
 R.T.: 13.983 min
 Delta R.T.: 0.029 min
 Response: 1433745794
 Conc: 783.65 ng/ml



#12 2,4,5-T
 R.T.: 14.947 min
 Delta R.T.: 0.006 min
 Response: 1311008363
 Conc: 731.48 ng/ml

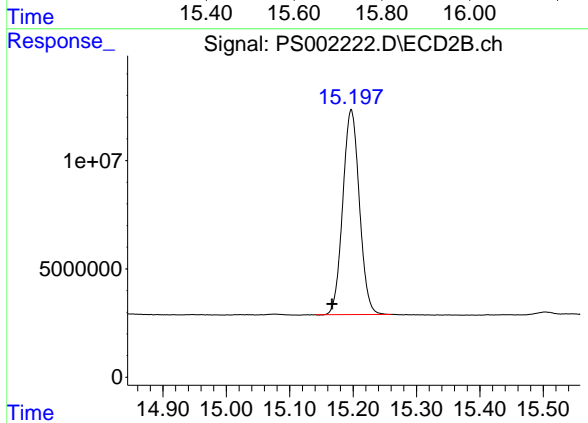


#12 2,4,5-T
 R.T.: 14.513 min
 Delta R.T.: -0.006 min
 Response: 1394528417
 Conc: 931.25 ng/ml

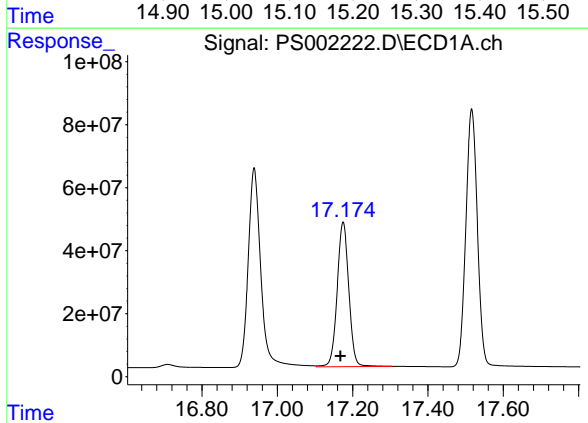


#13 2,4-DB
 R.T.: 15.693 min
 Delta R.T.: 0.005 min
 Response: 168190818
 Conc: 716.28 ng/ml

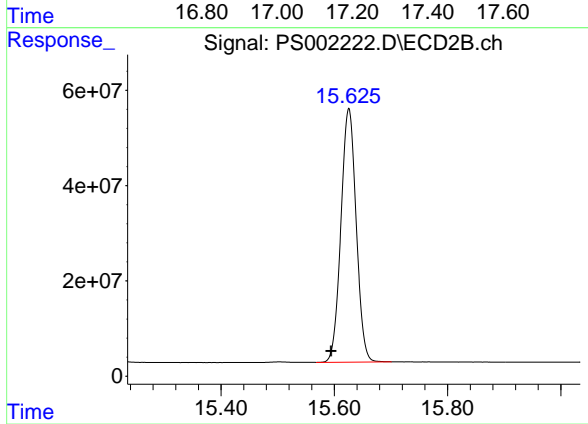
Instrument :
 ECD_S
 ClientSampled :



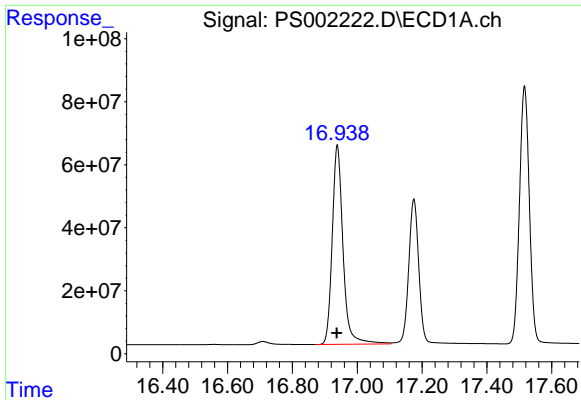
#13 2,4-DB
 R.T.: 15.197 min
 Delta R.T.: 0.030 min
 Response: 172074528
 Conc: 776.66 ng/ml



#14 DINOSEB
 R.T.: 17.175 min
 Delta R.T.: 0.007 min
 Response: 982698839
 Conc: 717.27 ng/ml



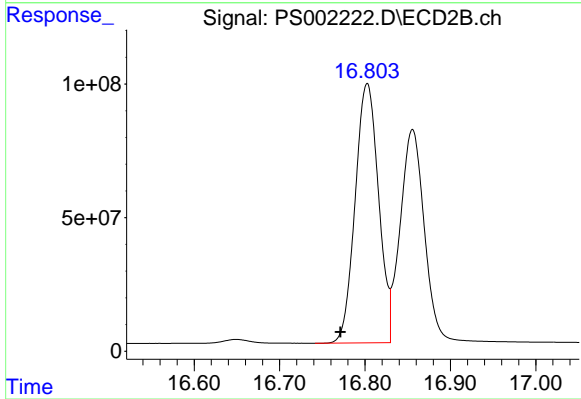
#14 DINOSEB
 R.T.: 15.626 min
 Delta R.T.: 0.031 min
 Response: 994504955
 Conc: 785.63 ng/ml



#15 Picloram

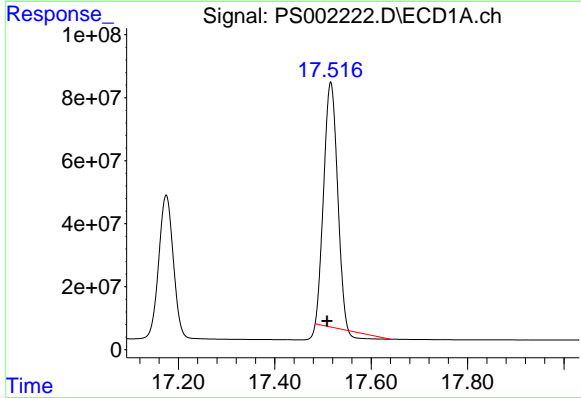
R.T.: 16.939 min
 Delta R.T.: 0.001 min
 Response: 1463482604
 Conc: 613.54 ng/ml

Instrument :
 ECD_S
 ClientSampled :



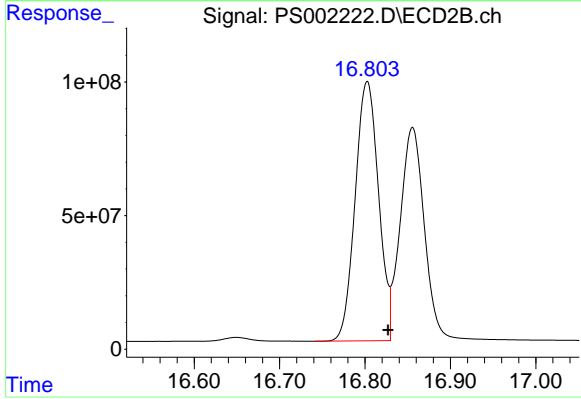
#15 Picloram

R.T.: 16.803 min
 Delta R.T.: 0.031 min
 Response: 1847014355
 Conc: 816.46 ng/ml



#16 DCPA

R.T.: 17.516 min
 Delta R.T.: 0.008 min
 Response: 1458788973
 Conc: 621.43 ng/ml



#16 DCPA

R.T.: 16.803 min
 Delta R.T.: -0.024 min
 Response: 1847014355
 Conc: 780.03 ng/ml