

Data Path : Z:\pestpcbsrv\HPCHEM1\ECD_S\Data\PS103020\
 Data File : PS013042.D
 Signal(s) : Signal #1: ECD1A.ch Signal #2: ECD2B.ch
 Acq On : 30 Oct 2020 12:03
 Operator : DD\AJ
 Sample : L4227-07
 Misc :
 ALS Vial : 7 Sample Multiplier: 1

Instrument :
 ECD_S
 ClientSampleId :

Integration File signal 1: autoint1.e
 Integration File signal 2: autoint2.e
 Quant Time: Oct 30 18:04:27 2020
 Quant Method : Z:\pestpcbsrv\HPCHEM1\ECD_S\Method\PS102020.M
 Quant Title : 8080.M
 QLast Update : Wed Oct 21 02:27:47 2020
 Response via : Initial Calibration
 Integrator: ChemStation

Volume Inj. : 2 µl
 Signal #1 Phase : Rtx-CLPesticides Signal #2 Phase: Rtx-CLPesticides2
 Signal #1 Info : 30M x 0.32mm x0.5 Signal #2 Info : 30M x 0.32mm x 0.25µm

Compound	RT#1	RT#2	Resp#1	Resp#2	ng/ml	ng/ml

System Monitoring Compounds						
4) S 2,4-DCAA	7.211	6.915	167.6E6	80092658	187.302	199.607
Target Compounds						
1) T Dalapon	2.992	2.589	74559410	147.1E6	73.344	279.780 #
2) T 3,5-DICHL...	0.000	6.096	0	71248443	N.D.	113.075
3) T 4-Nitroph...	6.984	0.000	8417353	0	20.127	N.D. #
5) T DICAMBA	7.388	7.046	11327328	11591736	3.181	6.811 #
6) T MCPP	7.562	7.122	8417649	1865220	3.161	1.401 #
7) T MCPA	7.694	7.373	9736233	28756620	2.543	13.126 #
8) T DICHLORPROP	0.000	7.743	0	14615350	N.D.	31.816
9) T 2,4-D	8.279	7.977	18515600	3893897	17.945	7.083 #
10) T Pentachlo...	8.686	0.000	16929466	0	1.319	N.D. #
11) T 2,4,5-TP ...	0.000	8.761	0	22643052	N.D.	9.552
12) T 2,4,5-T	9.400	0.000	35377785	0	6.756	N.D. #
13) T 2,4-DB	0.000	9.670	0	4223995	N.D.	12.713
14) T DINOSEB	0.000	10.025	0	13697626	N.D.	8.145
15) T Picloram	10.969	11.008	12774665	13496607	2.018	3.749 #
16) T DCPA	11.451	10.898	23516110	4593504	3.549	1.507 #

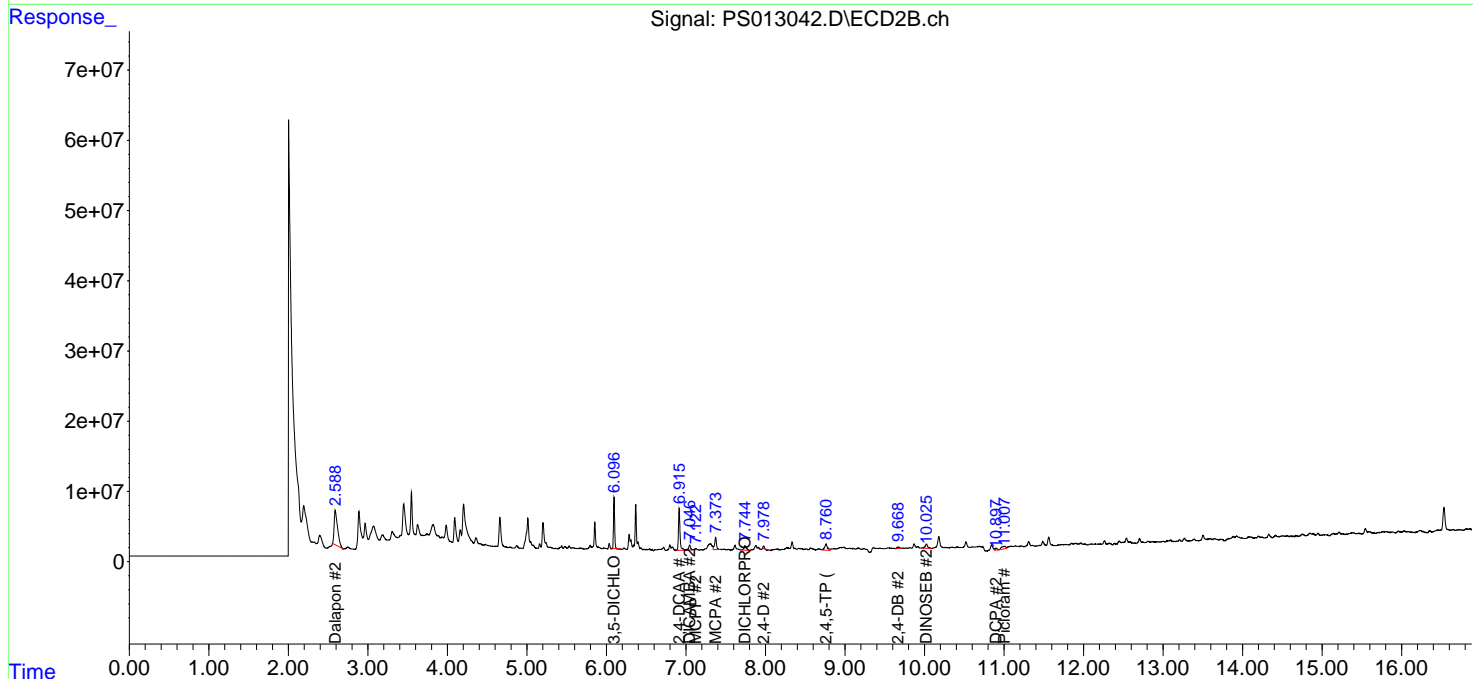
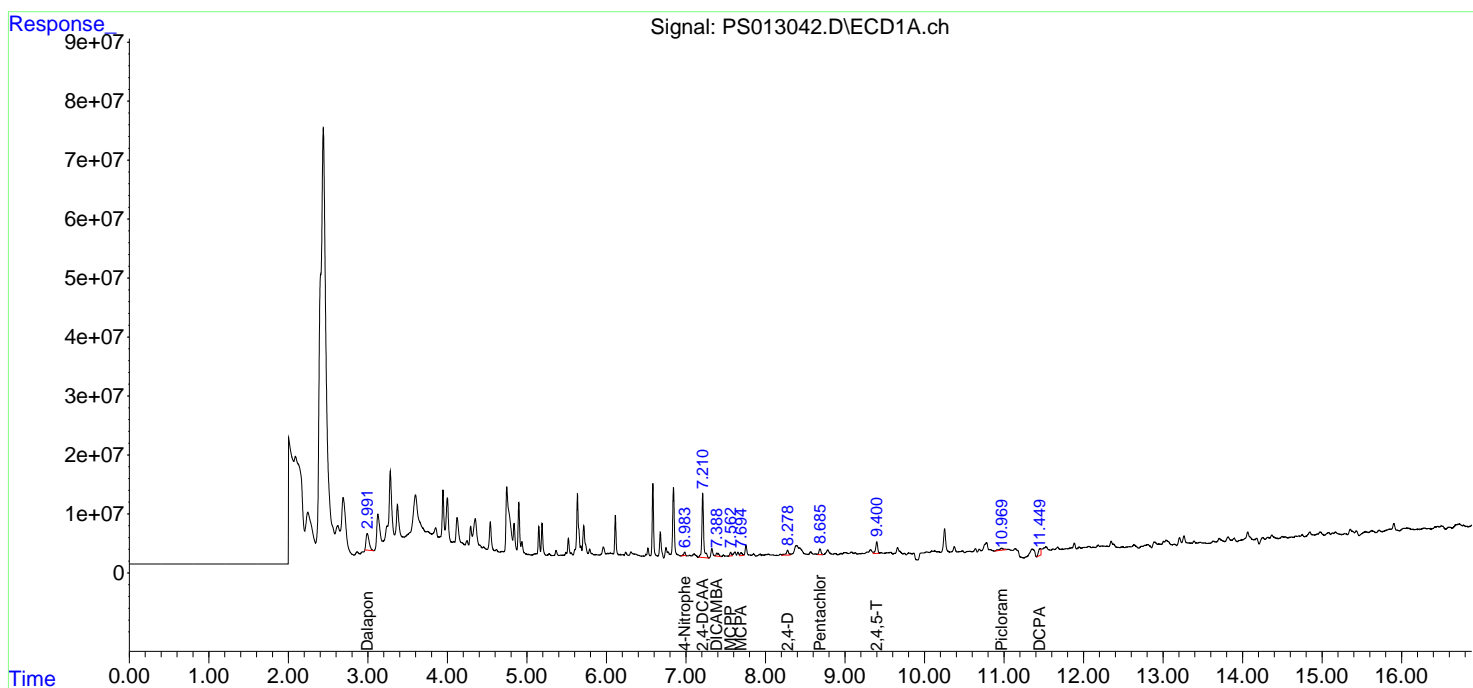
(f)=RT Delta > 1/2 Window (#)=Amounts differ by > 25% (m)=manual int.

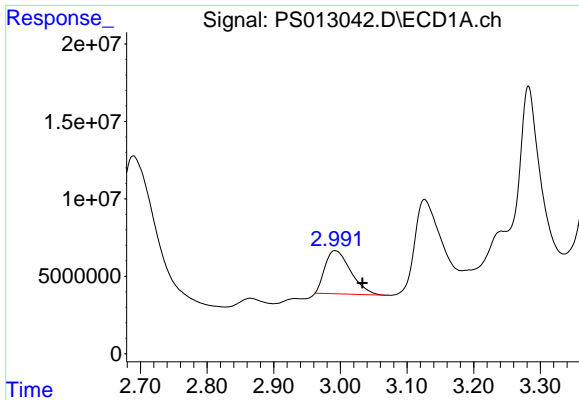
Data Path : Z:\pestpcbsrv\HPCHEM1\ECD_S\Data\PS103020\
 Data File : PS013042.D
 Signal(s) : Signal #1: ECD1A.ch Signal #2: ECD2B.ch
 Acq On : 30 Oct 2020 12:03
 Operator : DD\AJ
 Sample : L4227-07
 Misc :
 ALS Vial : 7 Sample Multiplier: 1

Instrument :
 ECD_S
 ClientSampled :

Integration File signal 1: autoint1.e
 Integration File signal 2: autoint2.e
 Quant Time: Oct 30 18:04:27 2020
 Quant Method : Z:\pestpcbsrv\HPCHEM1\ECD_S\Method\PS102020.M
 Quant Title : 8080.M
 QLast Update : Wed Oct 21 02:27:47 2020
 Response via : Initial Calibration
 Integrator: ChemStation

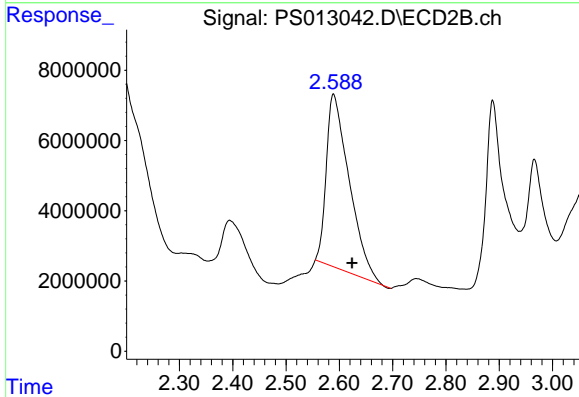
Volume Inj. : 2 µl
 Signal #1 Phase : Rtx-CLPesticides Signal #2 Phase: Rtx-CLPesticides2
 Signal #1 Info : 30M x 0.32mm x0.5 Signal #2 Info : 30M x 0.32mm x 0.25µm



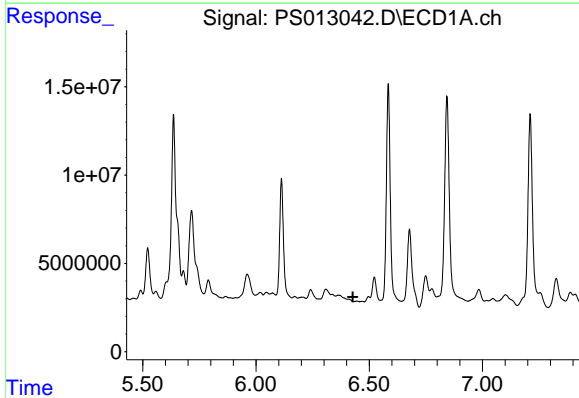


#1 Dalapon
 R.T.: 2.992 min
 Delta R.T.: -0.041 min
 Response: 74559410
 Conc: 73.34 ng/ml

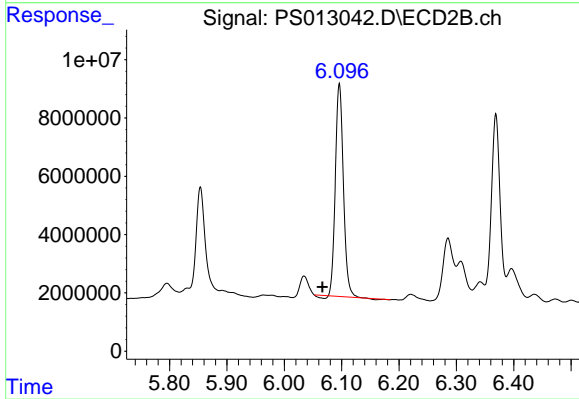
Instrument :
 ECD_S
 ClientSampleId :



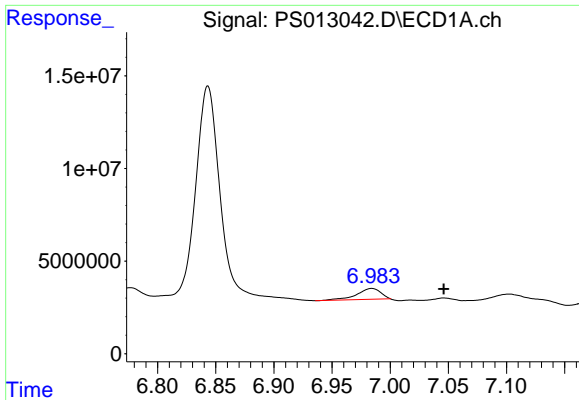
#1 Dalapon
 R.T.: 2.589 min
 Delta R.T.: -0.035 min
 Response: 147129602
 Conc: 279.78 ng/ml



#2 3,5-DICHLOROBENZOIC ACID
 R.T.: 0.000 min
 Exp R.T. : 6.428 min
 Response: 0
 Conc: N.D.

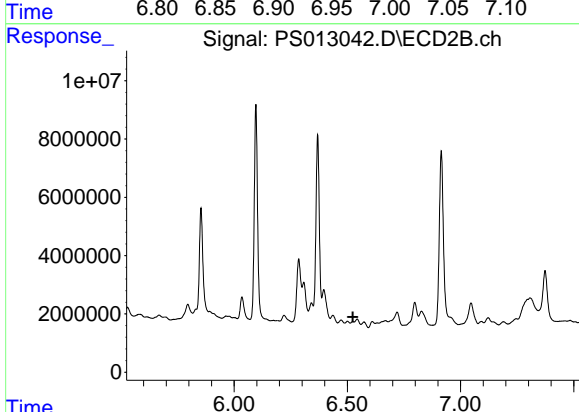


#2 3,5-DICHLOROBENZOIC ACID
 R.T.: 6.096 min
 Delta R.T.: 0.030 min
 Response: 71248443
 Conc: 113.07 ng/ml

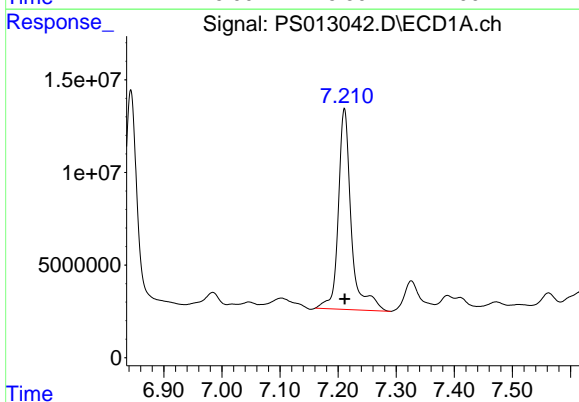


#3 4-Nitrophenol
 R.T.: 6.984 min
 Delta R.T.: -0.062 min
 Response: 8417353
 Conc: 20.13 ng/ml

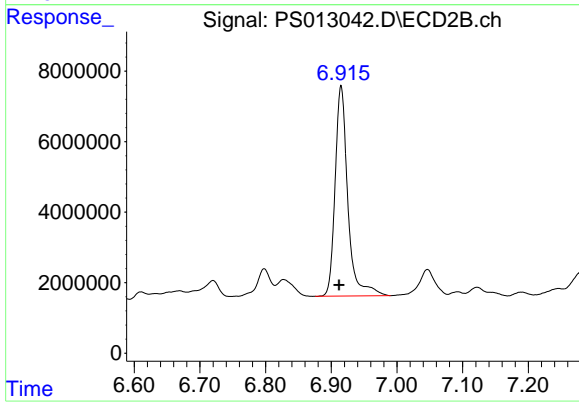
Instrument :
 ECD_S
 ClientSampled :



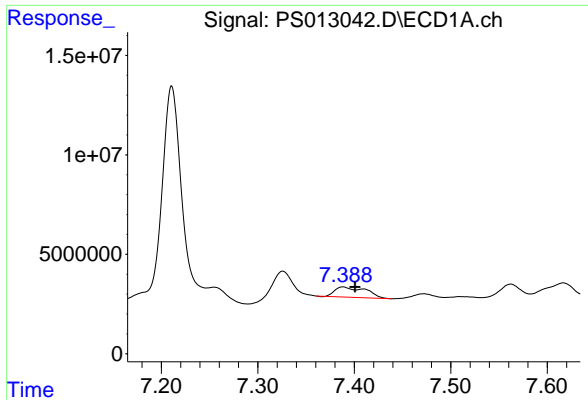
#3 4-Nitrophenol
 R.T.: 0.000 min
 Exp R.T. : 6.525 min
 Response: 0
 Conc: N.D.



#4 2,4-DCAA
 R.T.: 7.211 min
 Delta R.T.: 0.000 min
 Response: 167647833
 Conc: 187.30 ng/ml

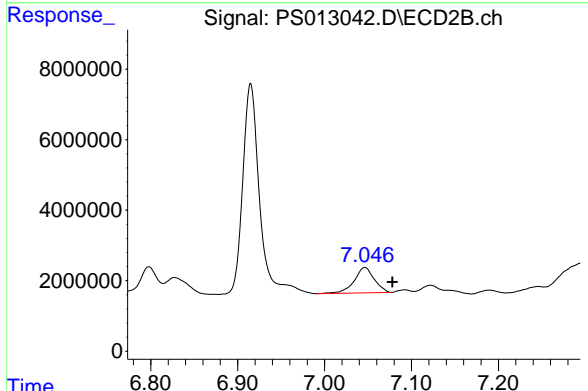


#4 2,4-DCAA
 R.T.: 6.915 min
 Delta R.T.: 0.003 min
 Response: 80092658
 Conc: 199.61 ng/ml

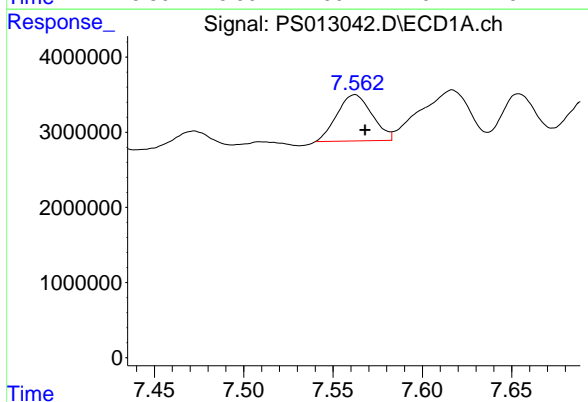


#5 DICAMBA
 R.T.: 7.388 min
 Delta R.T.: -0.012 min
 Response: 11327328
 Conc: 3.18 ng/ml

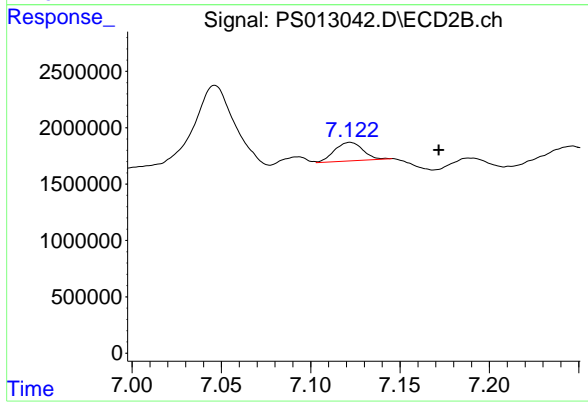
Instrument :
 ECD_S
 ClientSampled :



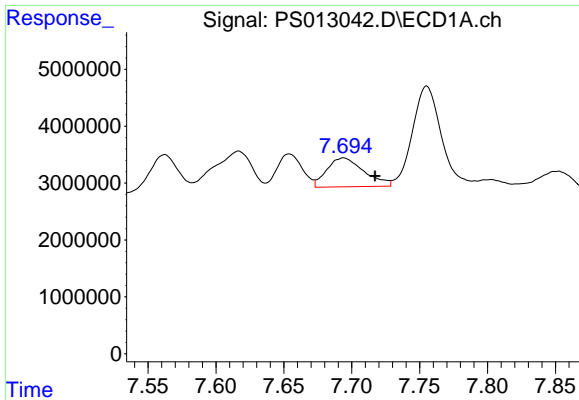
#5 DICAMBA
 R.T.: 7.046 min
 Delta R.T.: -0.032 min
 Response: 11591736
 Conc: 6.81 ng/ml



#6 MCP
 R.T.: 7.562 min
 Delta R.T.: -0.006 min
 Response: 8417649
 Conc: 3.16 ug/ml

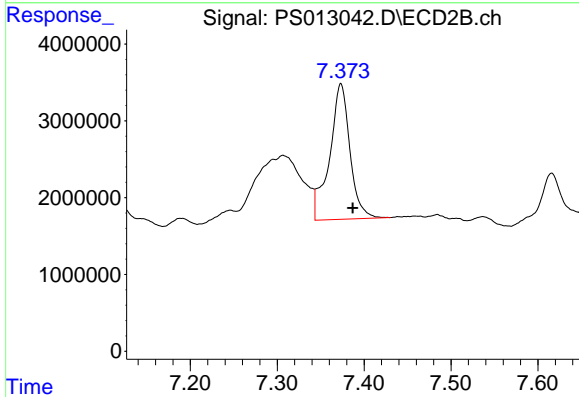


#6 MCP
 R.T.: 7.122 min
 Delta R.T.: -0.050 min
 Response: 1865220
 Conc: 1.40 ug/ml

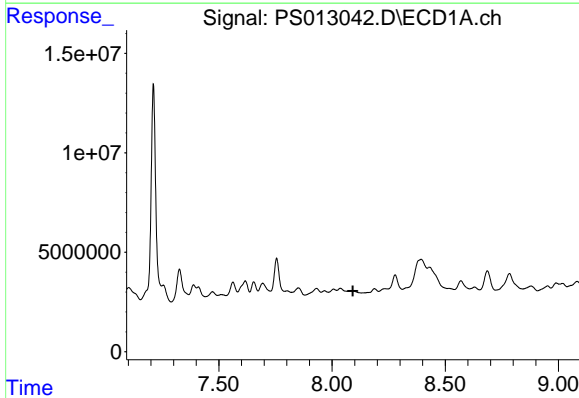


#7 MCPA
 R.T.: 7.694 min
 Delta R.T.: -0.023 min
 Response: 9736233
 Conc: 2.54 ug/ml

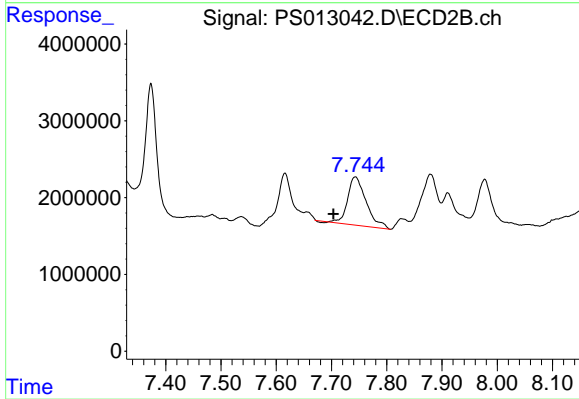
Instrument :
 ECD_S
 ClientSampleId :



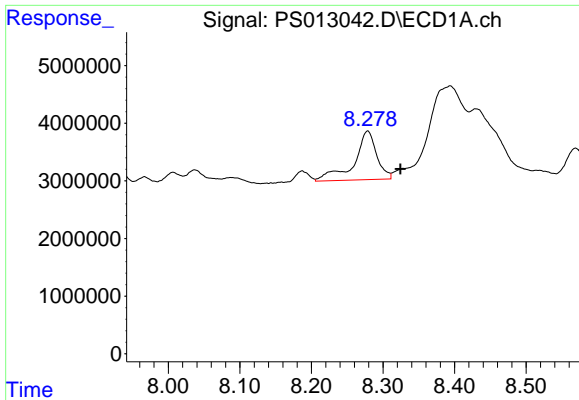
#7 MCPA
 R.T.: 7.373 min
 Delta R.T.: -0.014 min
 Response: 28756620
 Conc: 13.13 ug/ml



#8 DICHLORPROP
 R.T.: 0.000 min
 Exp R.T. : 8.092 min
 Response: 0
 Conc: N.D.

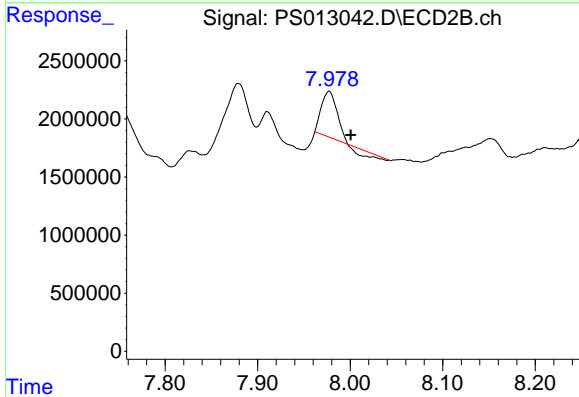


#8 DICHLORPROP
 R.T.: 7.743 min
 Delta R.T.: 0.040 min
 Response: 14615350
 Conc: 31.82 ng/ml

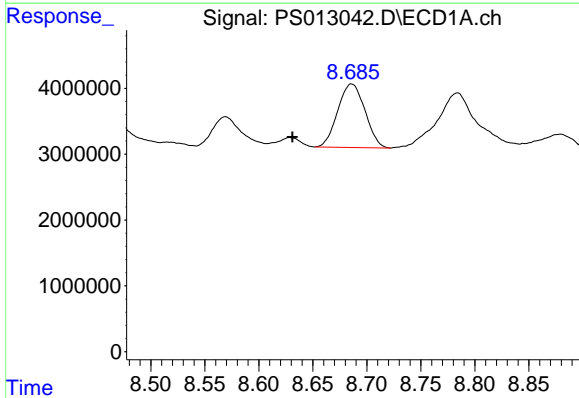


#9 2,4-D
 R.T.: 8.279 min
 Delta R.T.: -0.046 min
 Response: 18515600
 Conc: 17.94 ng/ml

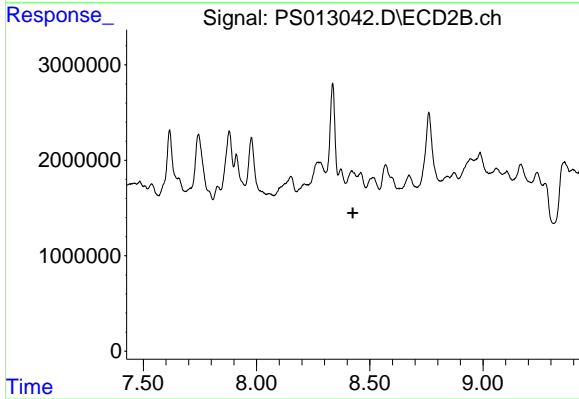
Instrument :
 ECD_S
 ClientSampleId :



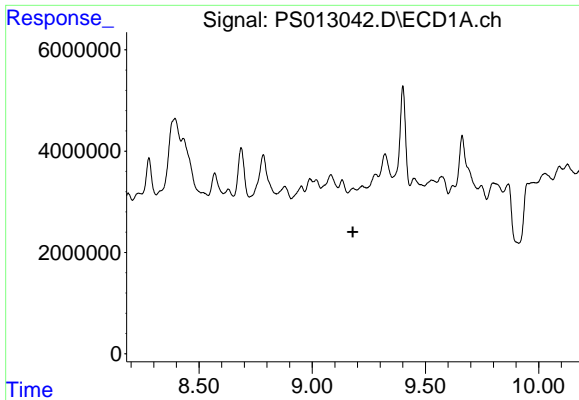
#9 2,4-D
 R.T.: 7.977 min
 Delta R.T.: -0.023 min
 Response: 3893897
 Conc: 7.08 ng/ml



#10 Pentachlorophenol
 R.T.: 8.686 min
 Delta R.T.: 0.055 min
 Response: 16929466
 Conc: 1.32 ng/ml

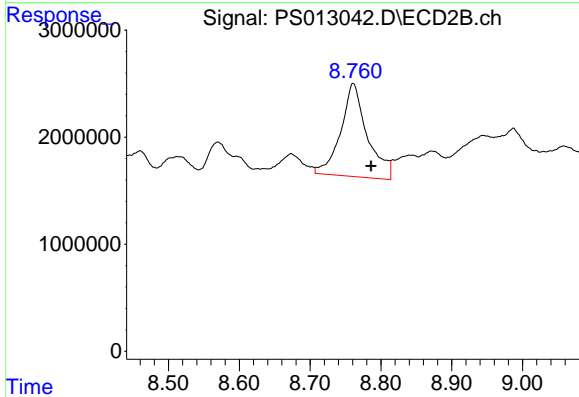


#10 Pentachlorophenol
 R.T.: 0.000 min
 Exp R.T. : 8.425 min
 Response: 0
 Conc: N.D.

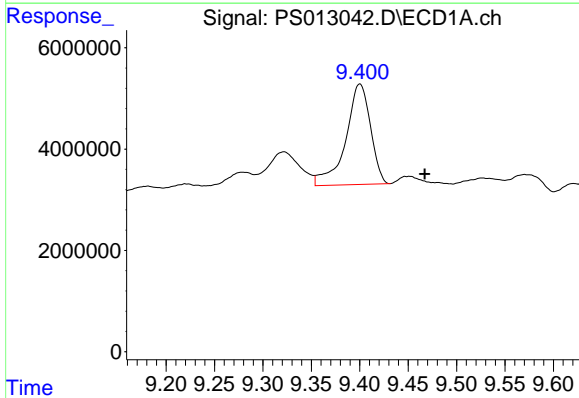


#11 2,4,5-TP (SILVEX)
 R.T.: 0.000 min
 Exp R.T.: 9.180 min
 Response: 0
 Conc: N.D.

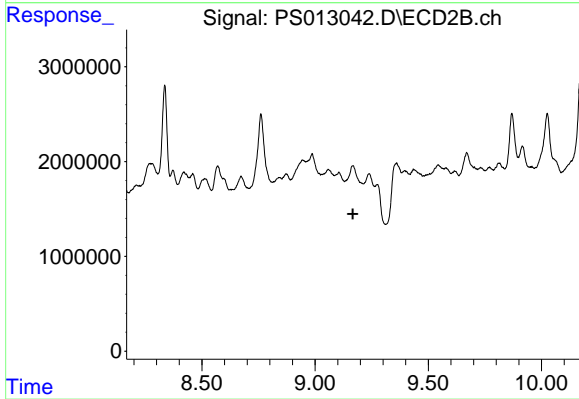
Instrument :
 ECD_S
 ClientSampleId :



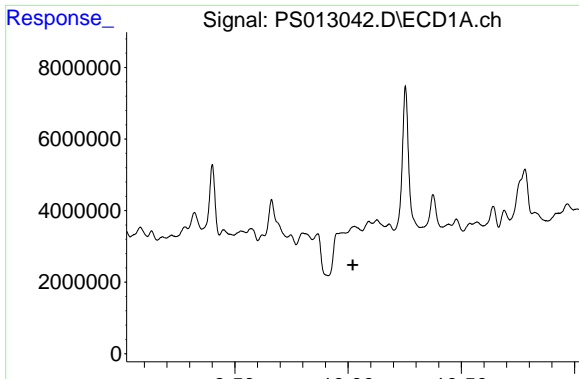
#11 2,4,5-TP (SILVEX)
 R.T.: 8.761 min
 Delta R.T.: -0.025 min
 Response: 22643052
 Conc: 9.55 ng/ml



#12 2,4,5-T
 R.T.: 9.400 min
 Delta R.T.: -0.067 min
 Response: 35377785
 Conc: 6.76 ng/ml



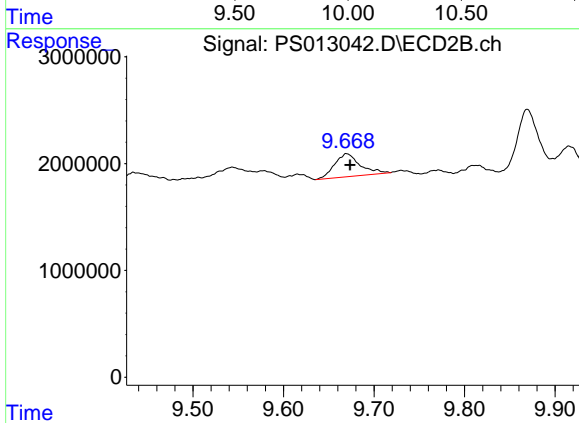
#12 2,4,5-T
 R.T.: 0.000 min
 Exp R.T.: 9.167 min
 Response: 0
 Conc: N.D.



#13 2,4-DB

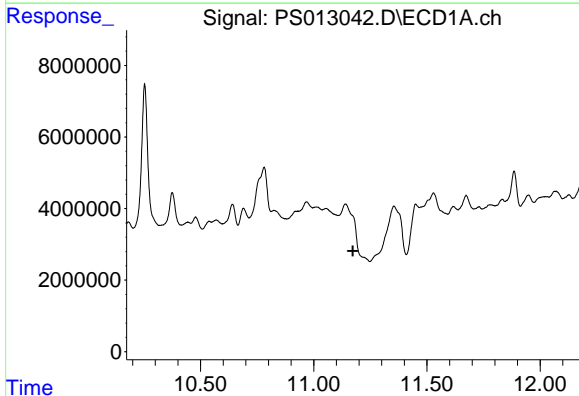
R.T.: 0.000 min
 Exp R.T. : 10.021 min
 Response: 0
 Conc: N.D.

Instrument :
 ECD_S
 ClientSampled :



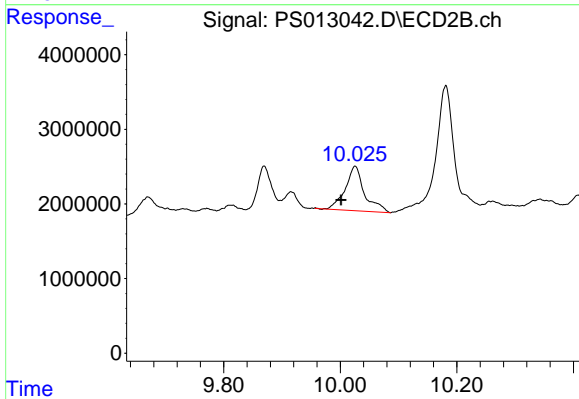
#13 2,4-DB

R.T.: 9.670 min
 Delta R.T.: -0.004 min
 Response: 4223995
 Conc: 12.71 ng/ml



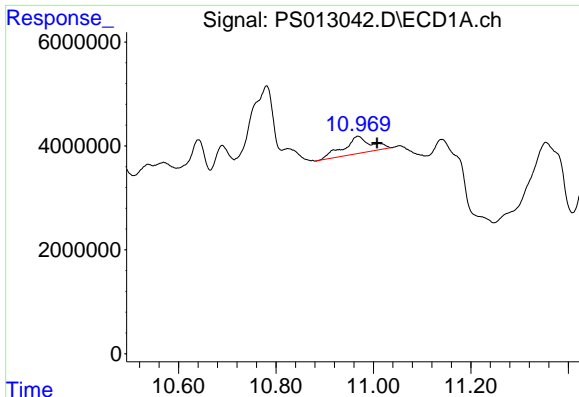
#14 DINOSEB

R.T.: 0.000 min
 Exp R.T. : 11.173 min
 Response: 0
 Conc: N.D.



#14 DINOSEB

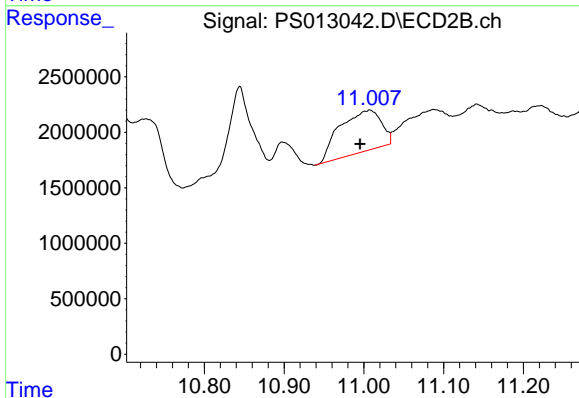
R.T.: 10.025 min
 Delta R.T.: 0.024 min
 Response: 13697626
 Conc: 8.15 ng/ml



#15 Picloram

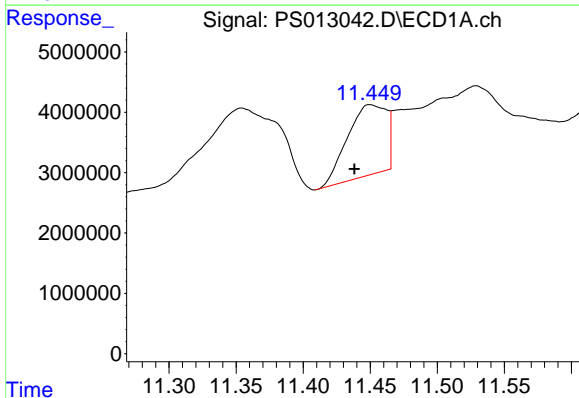
R.T.: 10.969 min
 Delta R.T.: -0.039 min
 Response: 12774665
 Conc: 2.02 ng/ml

Instrument :
 ECD_S
 ClientSampleId :



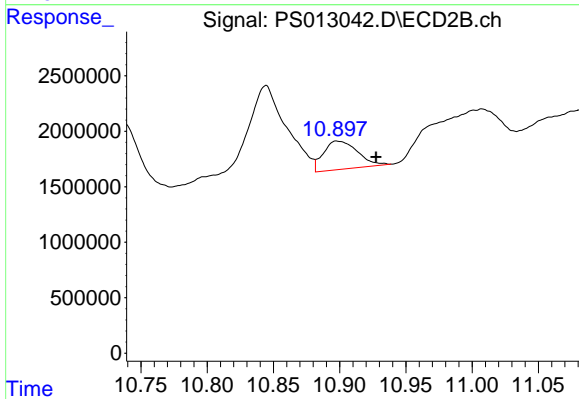
#15 Picloram

R.T.: 11.008 min
 Delta R.T.: 0.012 min
 Response: 13496607
 Conc: 3.75 ng/ml



#16 DCPA

R.T.: 11.451 min
 Delta R.T.: 0.012 min
 Response: 23516110
 Conc: 3.55 ng/ml



#16 DCPA

R.T.: 10.898 min
 Delta R.T.: -0.030 min
 Response: 4593504
 Conc: 1.51 ng/ml