

Data Path : Z:\pestpcbsrv\HPCHEM1\ECD\_S\Data\PS103020\  
 Data File : PS013043.D  
 Signal(s) : Signal #1: ECD1A.ch Signal #2: ECD2B.ch  
 Acq On : 30 Oct 2020 12:26  
 Operator : DD\AJ  
 Sample : L4529-02  
 Misc :  
 ALS Vial : 8 Sample Multiplier: 1

Instrument :  
 ECD\_S  
 ClientSampleId :  
 TP-T3

Integration File signal 1: autoint1.e  
 Integration File signal 2: autoint2.e  
 Quant Time: Oct 30 18:04:43 2020  
 Quant Method : Z:\pestpcbsrv\HPCHEM1\ECD\_S\Method\PS102020.M  
 Quant Title : 8080.M  
 QLast Update : Wed Oct 21 02:27:47 2020  
 Response via : Initial Calibration  
 Integrator: ChemStation

Volume Inj. : 2 µl  
 Signal #1 Phase : Rtx-CLPesticides Signal #2 Phase: Rtx-CLPesticides2  
 Signal #1 Info : 30M x 0.32mm x0.5 Signal #2 Info : 30M x 0.32mm x 0.25µm

	Compound	RT#1	RT#2	Resp#1	Resp#2	ng/ml	ng/ml
-----							
System Monitoring Compounds							
4) S	2,4-DCAA	7.210	6.914	358.1E6	179.4E6	400.114	447.040
Target Compounds							
1) T	Dalapon	2.992	2.589	68972399	121.3E6	67.848	230.568 #
2) T	3,5-DICHL...	0.000	6.096	0	86034623	N.D.	136.541
3) T	4-Nitroph...	7.098	0.000	15243847	0	36.450	N.D. #
5) T	DICAMBA	7.388	7.047	11986476	8603647	3.366	5.055 #
6) T	MCPD	7.562	0.000	8182400	0	3.072	N.D. #
7) T	MCPA	7.755	7.373	30369382	32971302	7.931	15.050 #
8) T	DICHLORPROP	0.000	7.742	0	3379743	N.D.	7.357
9) T	2,4-D	8.382	0.000	80163986	0	77.693	N.D. #
10) T	Pentachlo...	8.684	0.000	20097256	0	1.565	N.D. #
11) T	2,4,5-TP ...	0.000	8.829	0	2840165	N.D.	1.198
12) T	2,4,5-T	9.525	0.000	18802747	0	3.591	N.D. #
13) T	2,4-DB	9.955	0.000	38580087	0	45.703	N.D. #
14) T	DINOSEB	0.000	10.004	0	38039911	N.D.	22.621
15) T	Picloram	11.021	11.018	99257098	22814838	15.680	6.338 #
16) T	DCPA	11.508	10.932	56991578	16969464	8.601	5.569 #

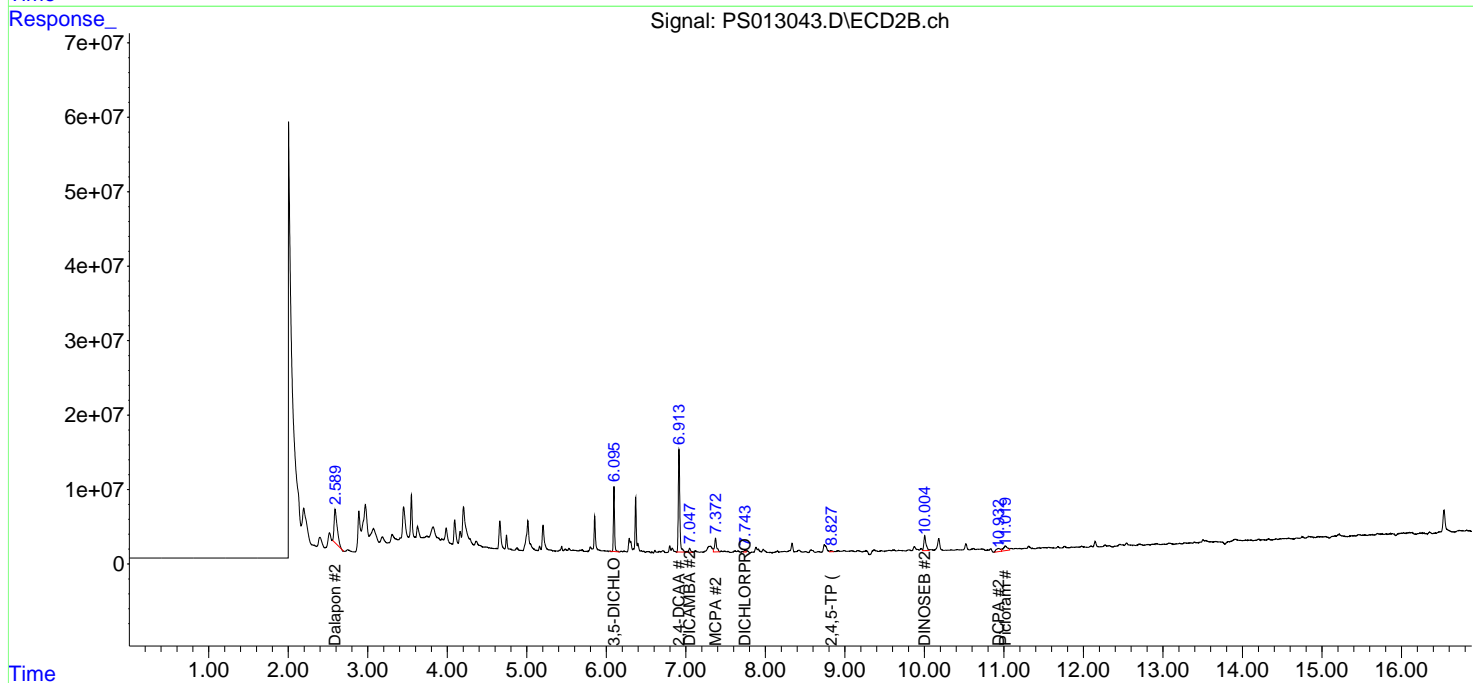
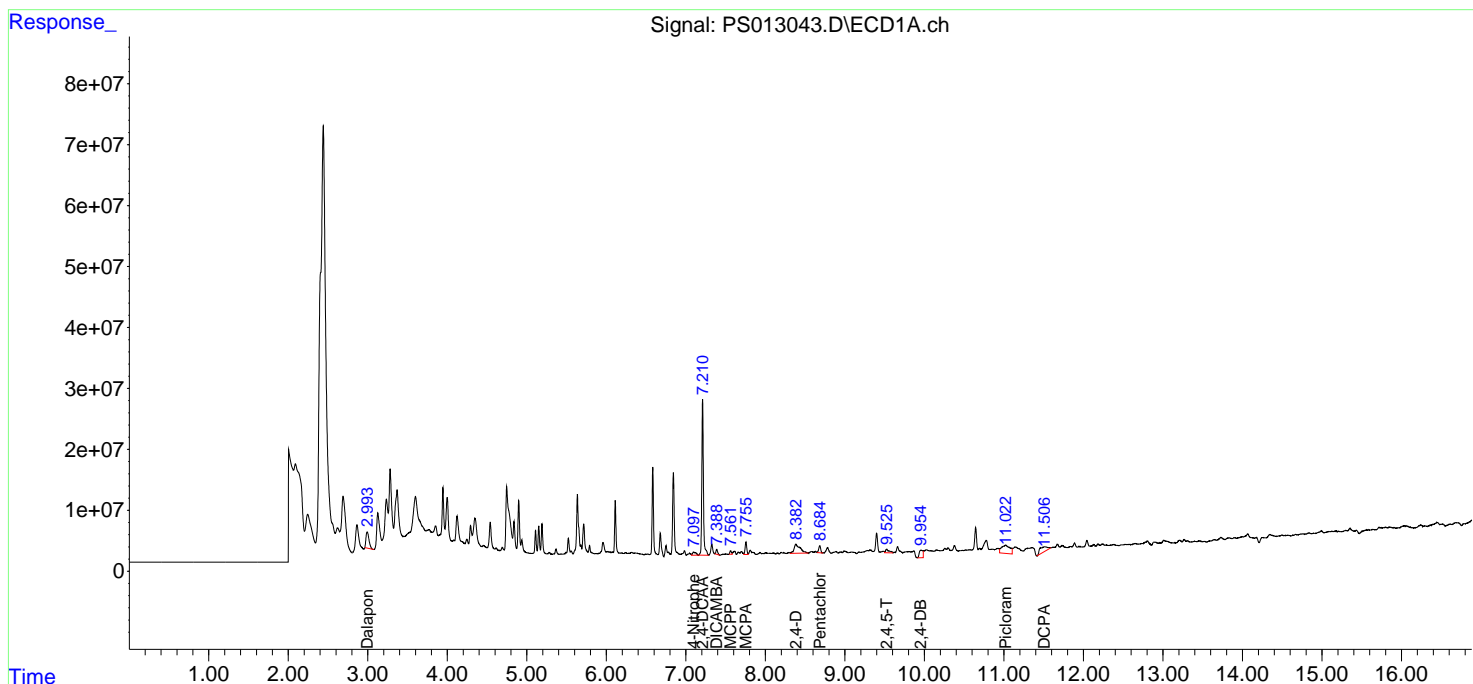
(f)=RT Delta > 1/2 Window (#)=Amounts differ by > 25% (m)=manual int.

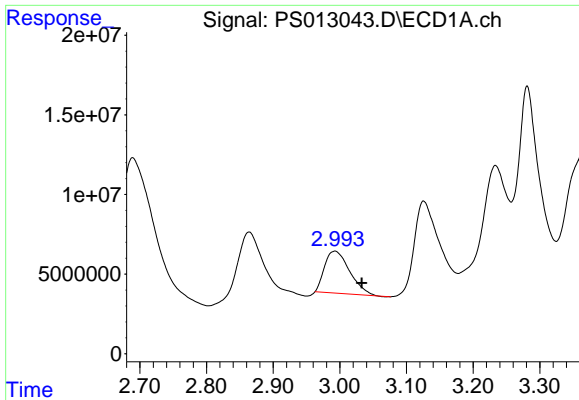
Data Path : Z:\pestpcbsrv\HPCHEM1\ECD\_S\Data\PS103020\  
 Data File : PS013043.D  
 Signal(s) : Signal #1: ECD1A.ch Signal #2: ECD2B.ch  
 Acq On : 30 Oct 2020 12:26  
 Operator : DD\AJ  
 Sample : L4529-02  
 Misc :  
 ALS Vial : 8 Sample Multiplier: 1

Instrument :  
 ECD\_S  
 ClientSampled :  
 TP-T3

Integration File signal 1: autoint1.e  
 Integration File signal 2: autoint2.e  
 Quant Time: Oct 30 18:04:43 2020  
 Quant Method : Z:\pestpcbsrv\HPCHEM1\ECD\_S\Method\PS102020.M  
 Quant Title : 8080.M  
 QLast Update : Wed Oct 21 02:27:47 2020  
 Response via : Initial Calibration  
 Integrator: ChemStation

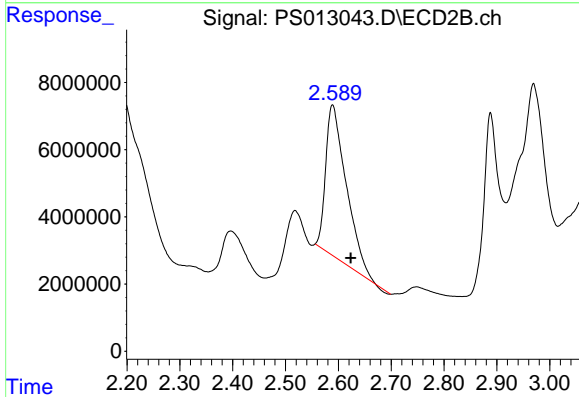
Volume Inj. : 2 µl  
 Signal #1 Phase : Rtx-CLPesticides Signal #2 Phase: Rtx-CLPesticides2  
 Signal #1 Info : 30M x 0.32mm x 0.5 Signal #2 Info : 30M x 0.32mm x 0.25µm



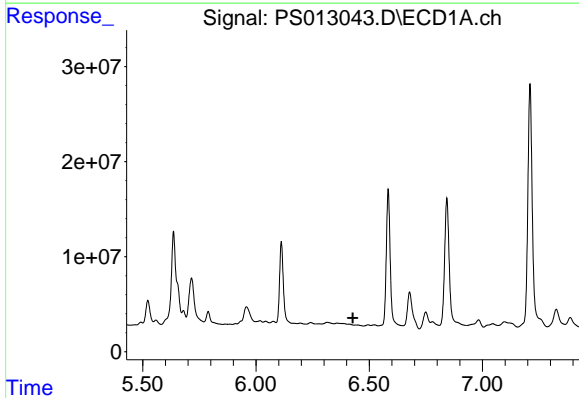


#1 Dalapon  
 R.T.: 2.992 min  
 Delta R.T.: -0.041 min  
 Response: 68972399  
 Conc: 67.85 ng/ml

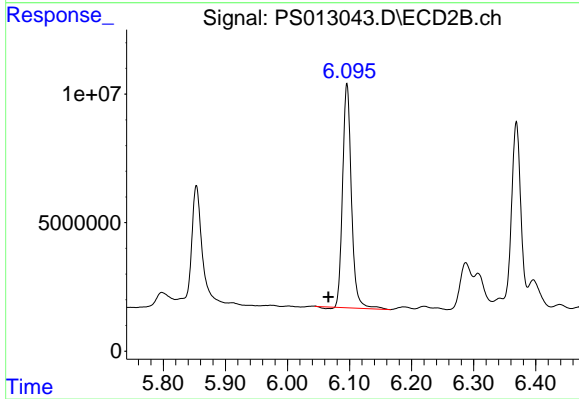
Instrument :  
 ECD\_S  
 ClientSampled :  
 TP-T3



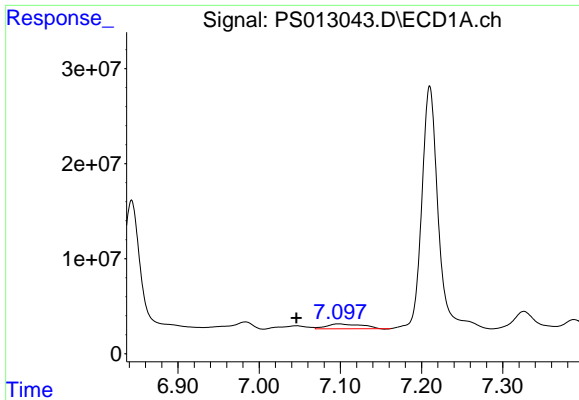
#1 Dalapon  
 R.T.: 2.589 min  
 Delta R.T.: -0.035 min  
 Response: 121250355  
 Conc: 230.57 ng/ml



#2 3,5-DICHLOROBENZOIC ACID  
 R.T.: 0.000 min  
 Exp R.T. : 6.428 min  
 Response: 0  
 Conc: N.D.

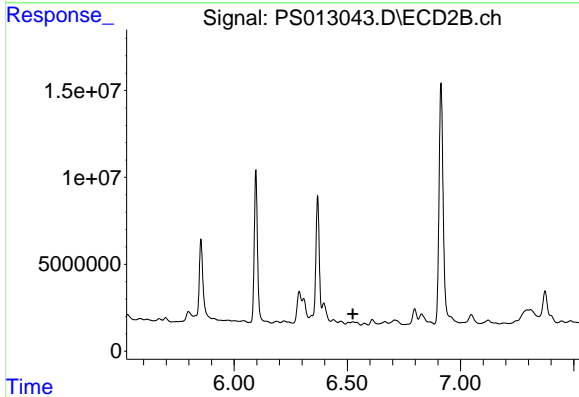


#2 3,5-DICHLOROBENZOIC ACID  
 R.T.: 6.096 min  
 Delta R.T.: 0.030 min  
 Response: 86034623  
 Conc: 136.54 ng/ml

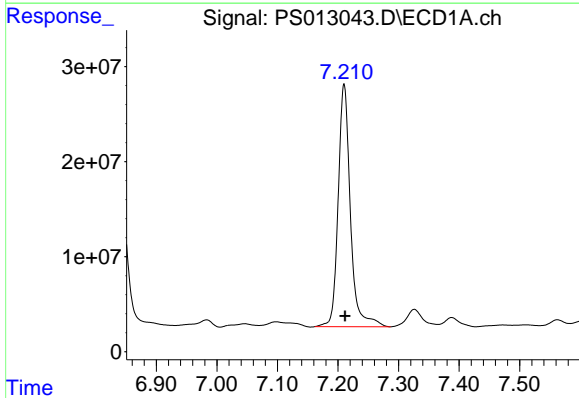


#3 4-Nitrophenol  
 R.T.: 7.098 min  
 Delta R.T.: 0.052 min  
 Response: 15243847  
 Conc: 36.45 ng/ml

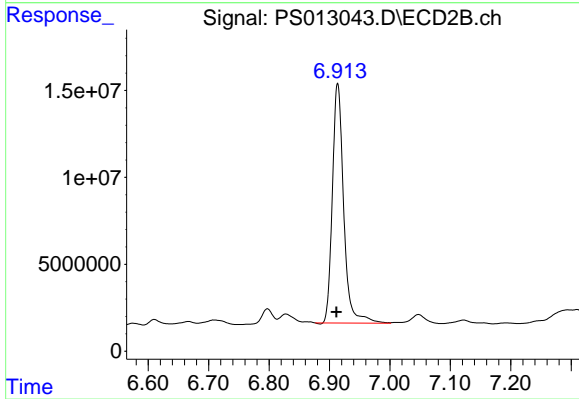
Instrument :  
 ECD\_S  
 ClientSampleId :  
 TP-T3



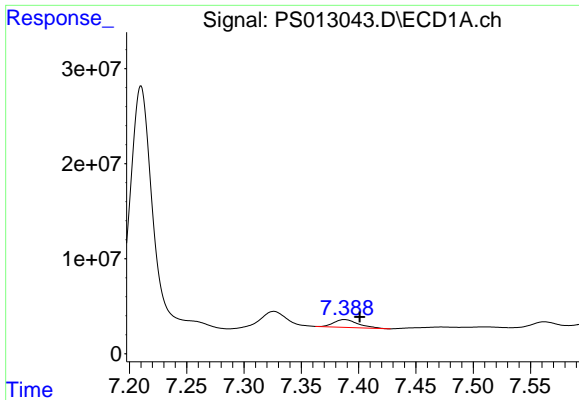
#3 4-Nitrophenol  
 R.T.: 0.000 min  
 Exp R.T. : 6.525 min  
 Response: 0  
 Conc: N.D.



#4 2,4-DCAA  
 R.T.: 7.210 min  
 Delta R.T.: -0.001 min  
 Response: 358129232  
 Conc: 400.11 ng/ml

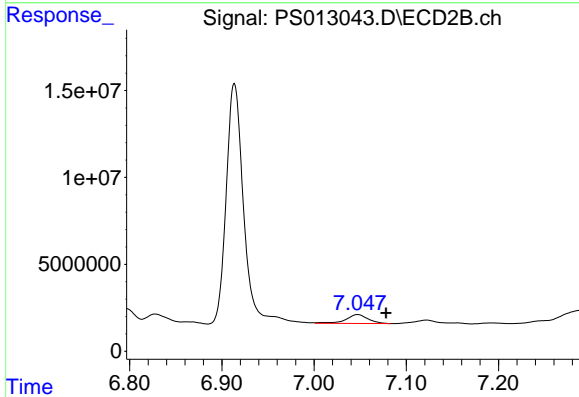


#4 2,4-DCAA  
 R.T.: 6.914 min  
 Delta R.T.: 0.002 min  
 Response: 179375435  
 Conc: 447.04 ng/ml

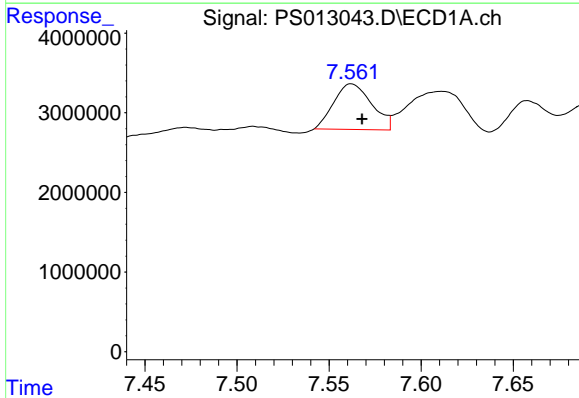


#5 DICAMBA  
 R.T.: 7.388 min  
 Delta R.T.: -0.013 min  
 Response: 11986476  
 Conc: 3.37 ng/ml

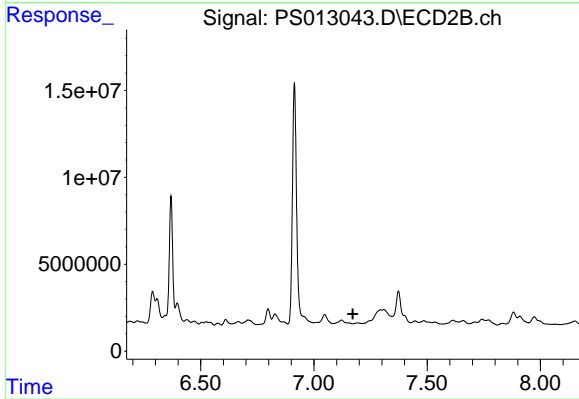
Instrument :  
 ECD\_S  
 ClientSampleId :  
 TP-T3



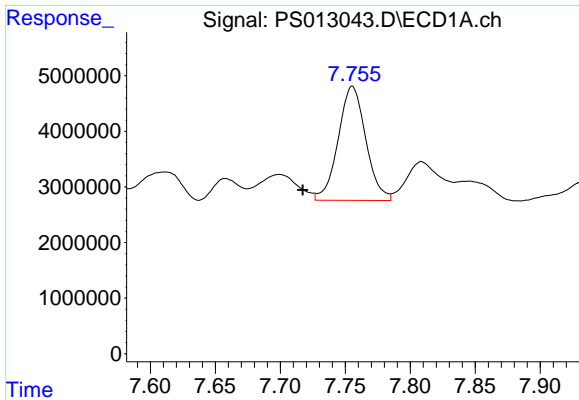
#5 DICAMBA  
 R.T.: 7.047 min  
 Delta R.T.: -0.031 min  
 Response: 8603647  
 Conc: 5.06 ng/ml



#6 MCPP  
 R.T.: 7.562 min  
 Delta R.T.: -0.006 min  
 Response: 8182400  
 Conc: 3.07 ug/ml

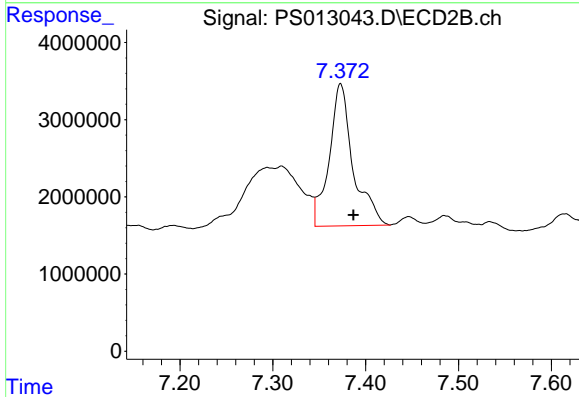


#6 MCPP  
 R.T.: 0.000 min  
 Exp R.T. : 7.172 min  
 Response: 0  
 Conc: N.D.

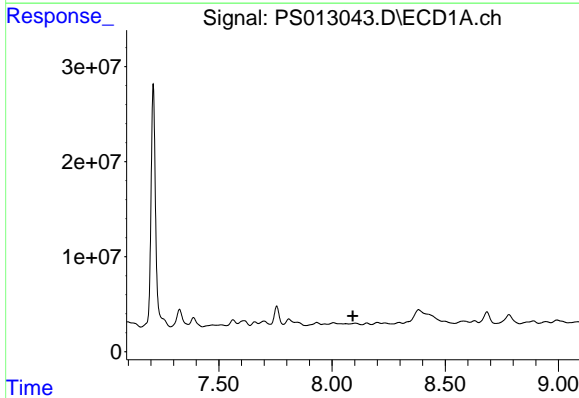


#7 MCPA  
 R.T.: 7.755 min  
 Delta R.T.: 0.038 min  
 Response: 30369382  
 Conc: 7.93 ug/ml

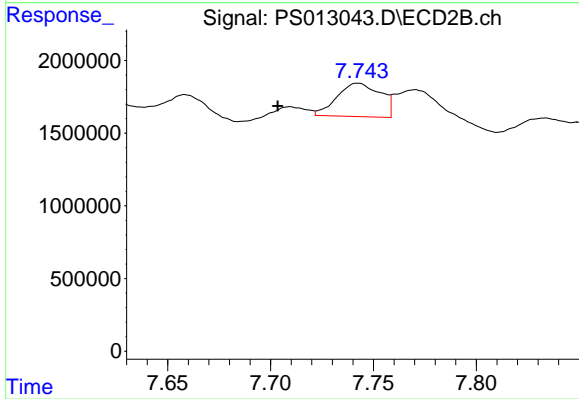
Instrument :  
 ECD\_S  
 ClientSampled :  
 TP-T3



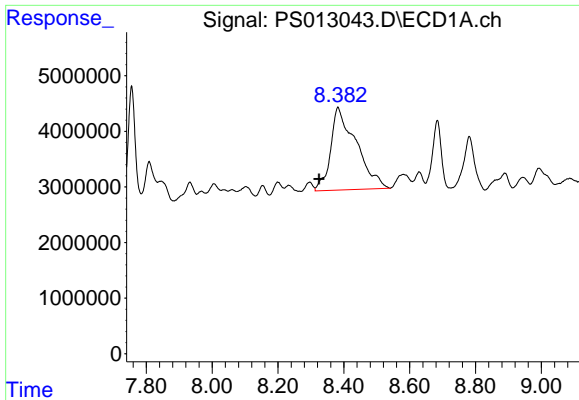
#7 MCPA  
 R.T.: 7.373 min  
 Delta R.T.: -0.014 min  
 Response: 32971302  
 Conc: 15.05 ug/ml



#8 DICHLORPROP  
 R.T.: 0.000 min  
 Exp R.T. : 8.092 min  
 Response: 0  
 Conc: N.D.



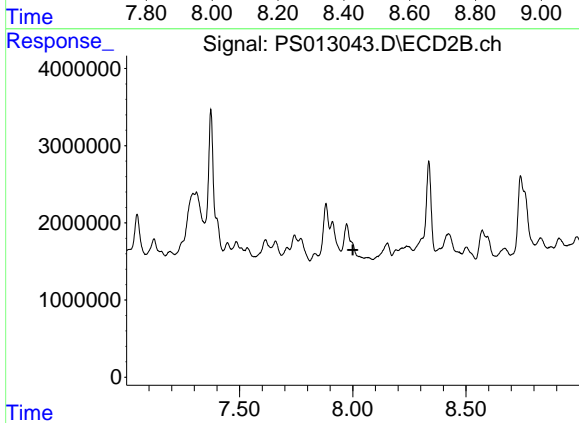
#8 DICHLORPROP  
 R.T.: 7.742 min  
 Delta R.T.: 0.039 min  
 Response: 3379743  
 Conc: 7.36 ng/ml



#9 2,4-D

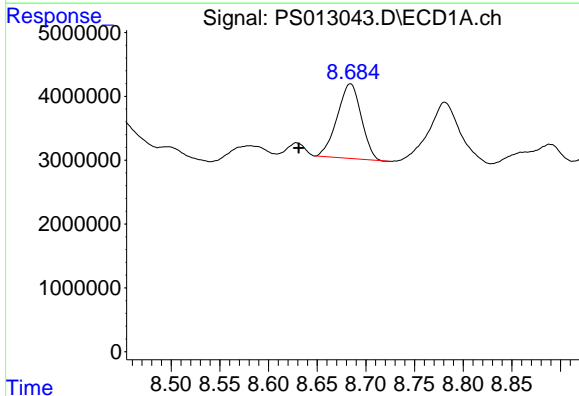
R.T.: 8.382 min  
 Delta R.T.: 0.058 min  
 Response: 80163986  
 Conc: 77.69 ng/ml

Instrument :  
 ECD\_S  
 ClientSampled :  
 TP-T3



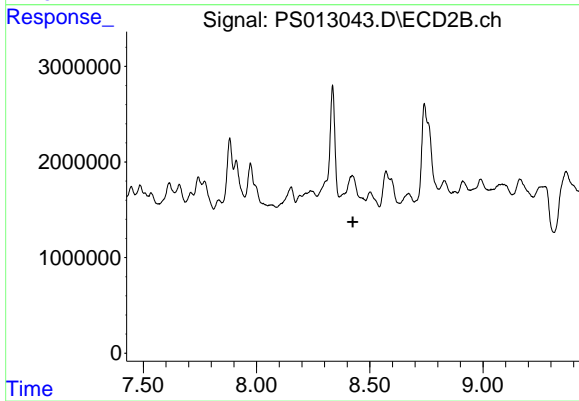
#9 2,4-D

R.T.: 0.000 min  
 Exp R.T. : 8.001 min  
 Response: 0  
 Conc: N.D.



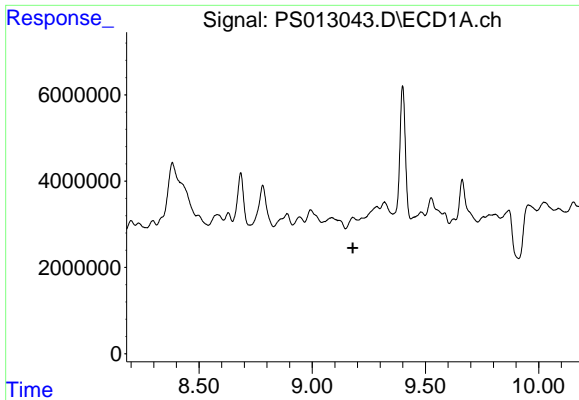
#10 Pentachlorophenol

R.T.: 8.684 min  
 Delta R.T.: 0.053 min  
 Response: 20097256  
 Conc: 1.57 ng/ml



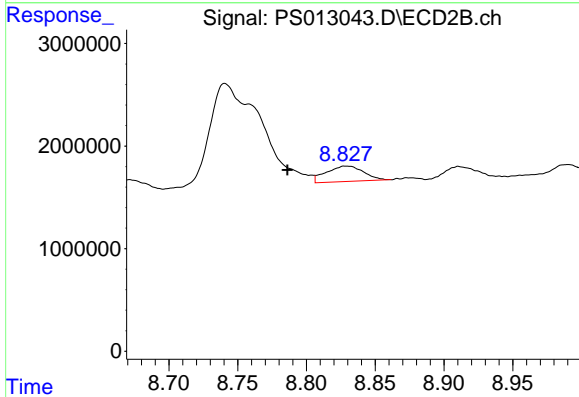
#10 Pentachlorophenol

R.T.: 0.000 min  
 Exp R.T. : 8.425 min  
 Response: 0  
 Conc: N.D.

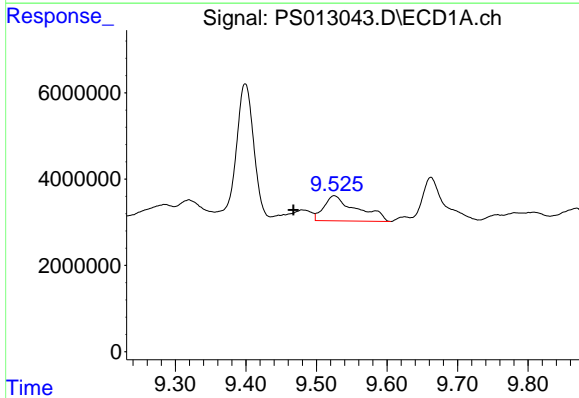


#11 2,4,5-TP (SILVEX)  
 R.T.: 0.000 min  
 Exp R.T.: 9.180 min  
 Response: 0  
 Conc: N.D.

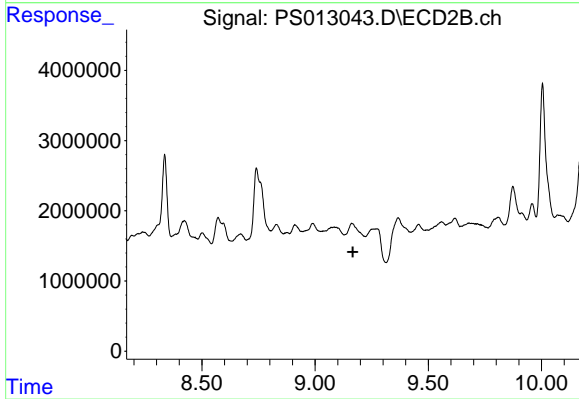
Instrument :  
 ECD\_S  
 ClientSampled :  
 TP-T3



#11 2,4,5-TP (SILVEX)  
 R.T.: 8.829 min  
 Delta R.T.: 0.042 min  
 Response: 2840165  
 Conc: 1.20 ng/ml

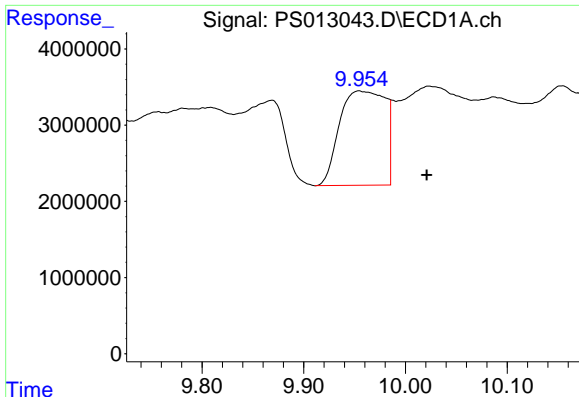


#12 2,4,5-T  
 R.T.: 9.525 min  
 Delta R.T.: 0.058 min  
 Response: 18802747  
 Conc: 3.59 ng/ml



#12 2,4,5-T  
 R.T.: 0.000 min  
 Exp R.T.: 9.167 min  
 Response: 0  
 Conc: N.D.

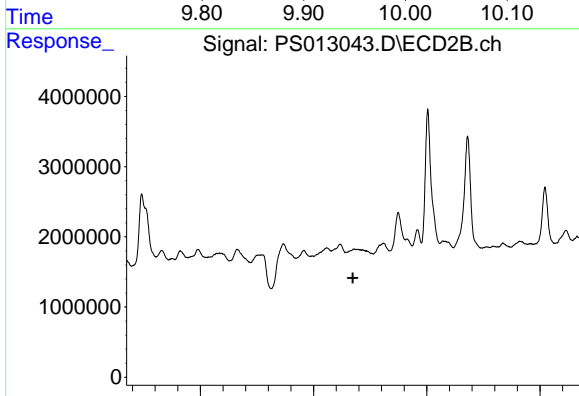




#13 2,4-DB

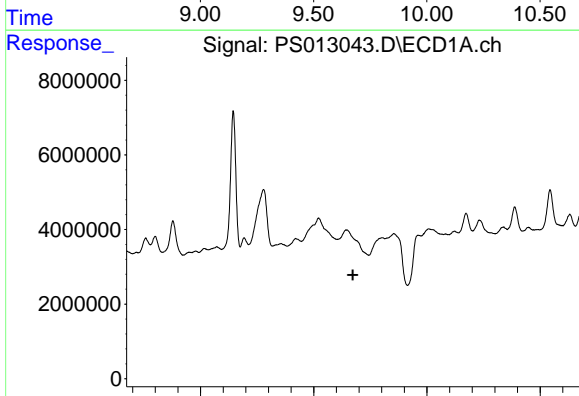
R.T.: 9.955 min  
 Delta R.T.: -0.066 min  
 Response: 38580087  
 Conc: 45.70 ng/ml

Instrument :  
 ECD\_S  
 ClientSampled :  
 TP-T3



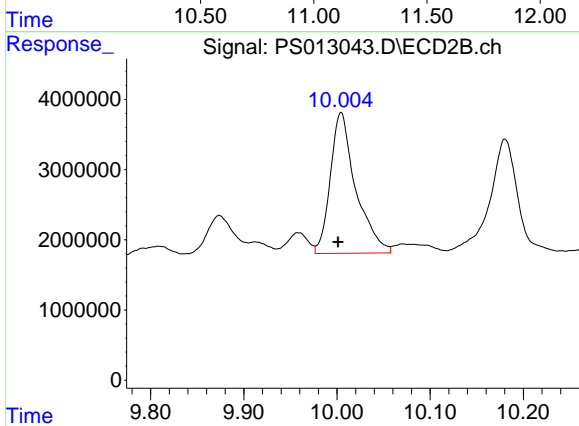
#13 2,4-DB

R.T.: 0.000 min  
 Exp R.T. : 9.674 min  
 Response: 0  
 Conc: N.D.



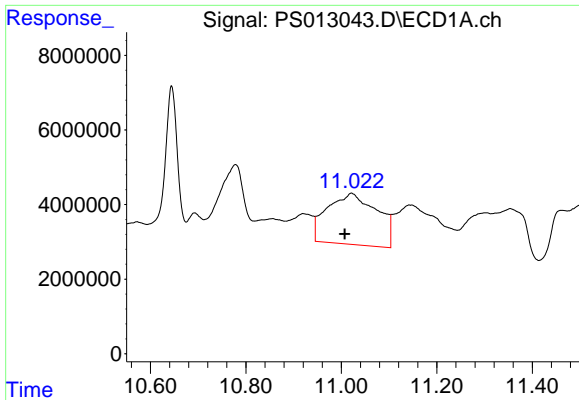
#14 DINOSEB

R.T.: 0.000 min  
 Exp R.T. : 11.173 min  
 Response: 0  
 Conc: N.D.



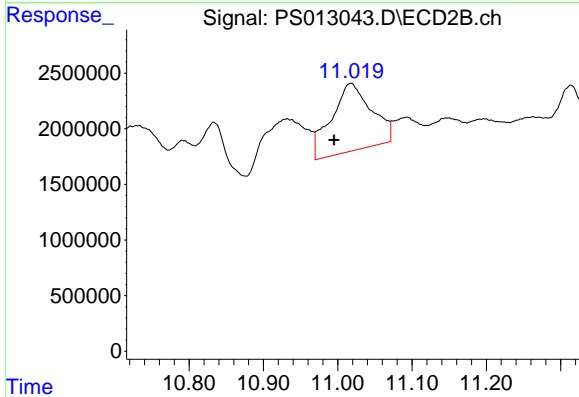
#14 DINOSEB

R.T.: 10.004 min  
 Delta R.T.: 0.003 min  
 Response: 38039911  
 Conc: 22.62 ng/ml

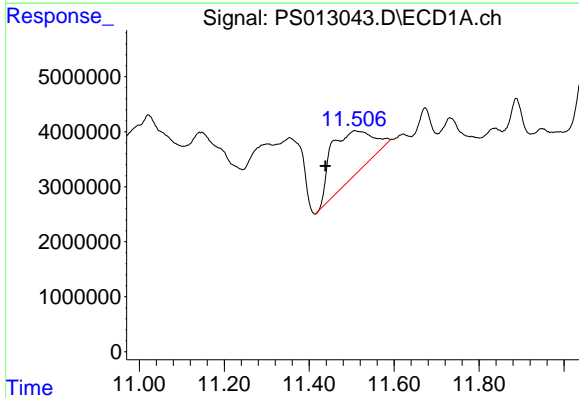


#15 Picloram  
 R.T.: 11.021 min  
 Delta R.T.: 0.014 min  
 Response: 99257098  
 Conc: 15.68 ng/ml

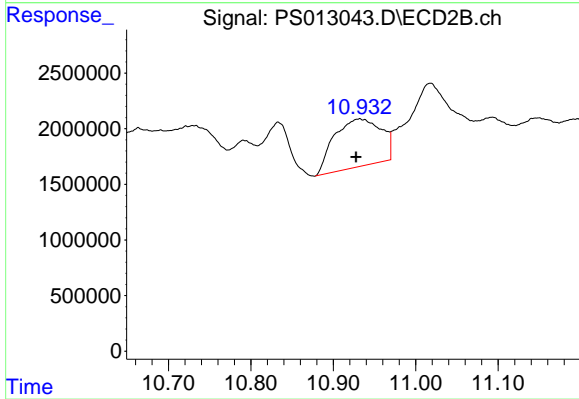
Instrument :  
 ECD\_S  
 ClientSampleId :  
 TP-T3



#15 Picloram  
 R.T.: 11.018 min  
 Delta R.T.: 0.023 min  
 Response: 22814838  
 Conc: 6.34 ng/ml



#16 DCPA  
 R.T.: 11.508 min  
 Delta R.T.: 0.069 min  
 Response: 56991578  
 Conc: 8.60 ng/ml



#16 DCPA  
 R.T.: 10.932 min  
 Delta R.T.: 0.004 min  
 Response: 16969464  
 Conc: 5.57 ng/ml