

Data Path : Z:\pestpcbsrv\HPCHEM1\ECD_S\Data\PS103020\
 Data File : PS013068.D
 Signal(s) : Signal #1: ECD1A.ch Signal #2: ECD2B.ch
 Acq On : 30 Oct 2020 22:01
 Operator : DD\AJ
 Sample : L4549-02
 Misc :
 ALS Vial : 29 Sample Multiplier: 1

Instrument :
 ECD_S
 ClientSampleId :

Integration File signal 1: autoint1.e
 Integration File signal 2: autoint2.e
 Quant Time: Oct 31 06:06:40 2020
 Quant Method : Z:\pestpcbsrv\HPCHEM1\ECD_S\Method\PS102020.M
 Quant Title : 8080.M
 QLast Update : Wed Oct 21 02:27:47 2020
 Response via : Initial Calibration
 Integrator: ChemStation

Volume Inj. : 2 µl
 Signal #1 Phase : Rtx-CLPesticides Signal #2 Phase: Rtx-CLPesticides2
 Signal #1 Info : 30M x 0.32mm x0.5 Signal #2 Info : 30M x 0.32mm x 0.25µm

	Compound	RT#1	RT#2	Resp#1	Resp#2	ng/ml	ng/ml

System Monitoring Compounds							
4) S	2,4-DCAA	7.209	6.912	612.7E6	312.8E6	684.534	779.449
Target Compounds							
1) T	Dalapon	2.991	2.591	73447835	122.9E6	72.250	233.790 #
2) T	3,5-DICHL...	0.000	6.045	0	2934586	N.D.	4.657
3) T	4-Nitroph...	6.977	6.543	9910048	3714404	23.696	15.967 #
5) T	DICAMBA	0.000	7.047	0	6651988	N.D.	3.909
6) T	MCP P	7.618	0.000	6721560	0	2.524	N.D. #
7) T	MCPA	7.700	7.381	79974316	16347834	20.886	7.462 #
8) T	DICHLORPROP	0.000	7.735	0	18925931	N.D.	41.200
9) T	2,4-D	8.289	0.000	39336197	0	38.124	N.D. #
10) T	Pentachlo...	8.683	8.473	8151362	12518856	<MDL	2.216 #
11) T	2,4,5-TP ...	0.000	8.740	0	58335511	N.D.	24.608
12) T	2,4,5-T	9.529	0.000	15127816	0	2.889	N.D. #
13) T	2,4-DB	9.974	0.000	15700170	0	18.599	N.D. #
14) T	DINOSEB	11.139	10.049	13184283	22749348	3.075	13.528 #
15) T	Picloram	10.969	0.000	30109900	0	4.757	N.D. #

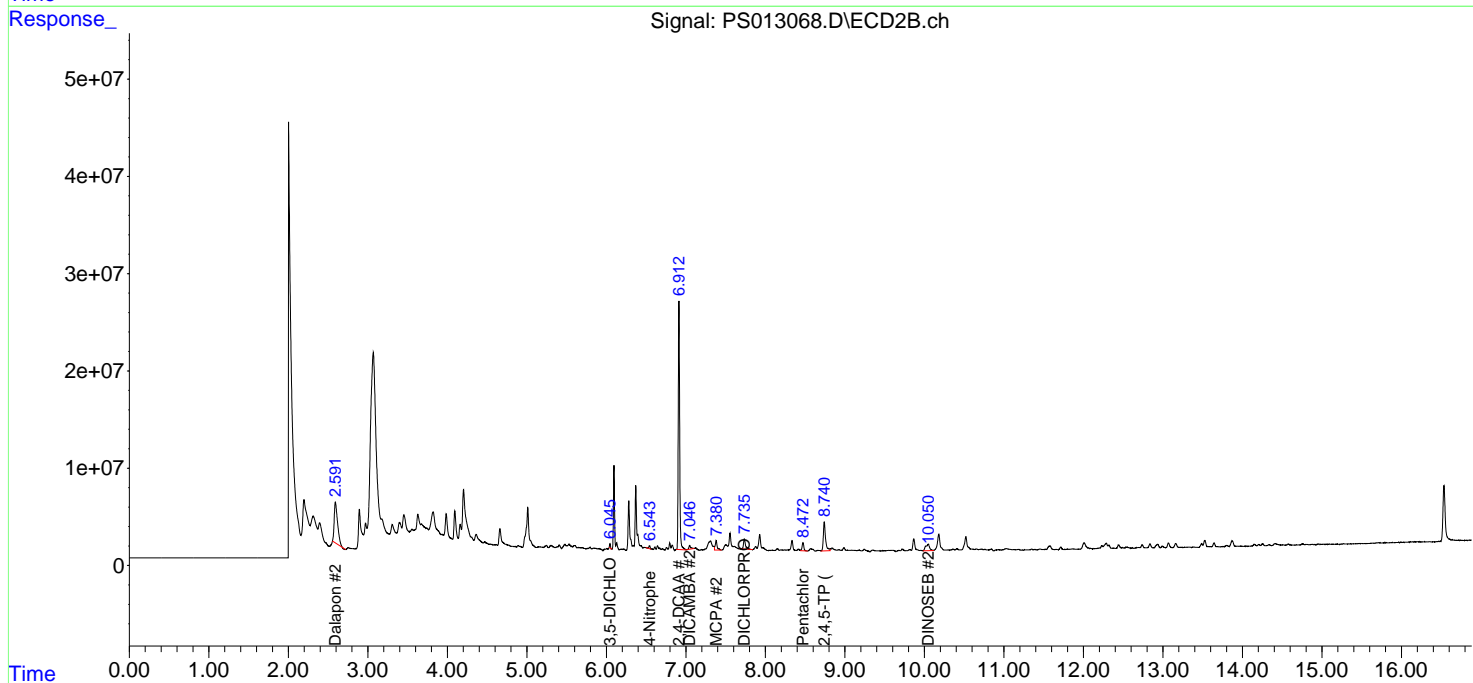
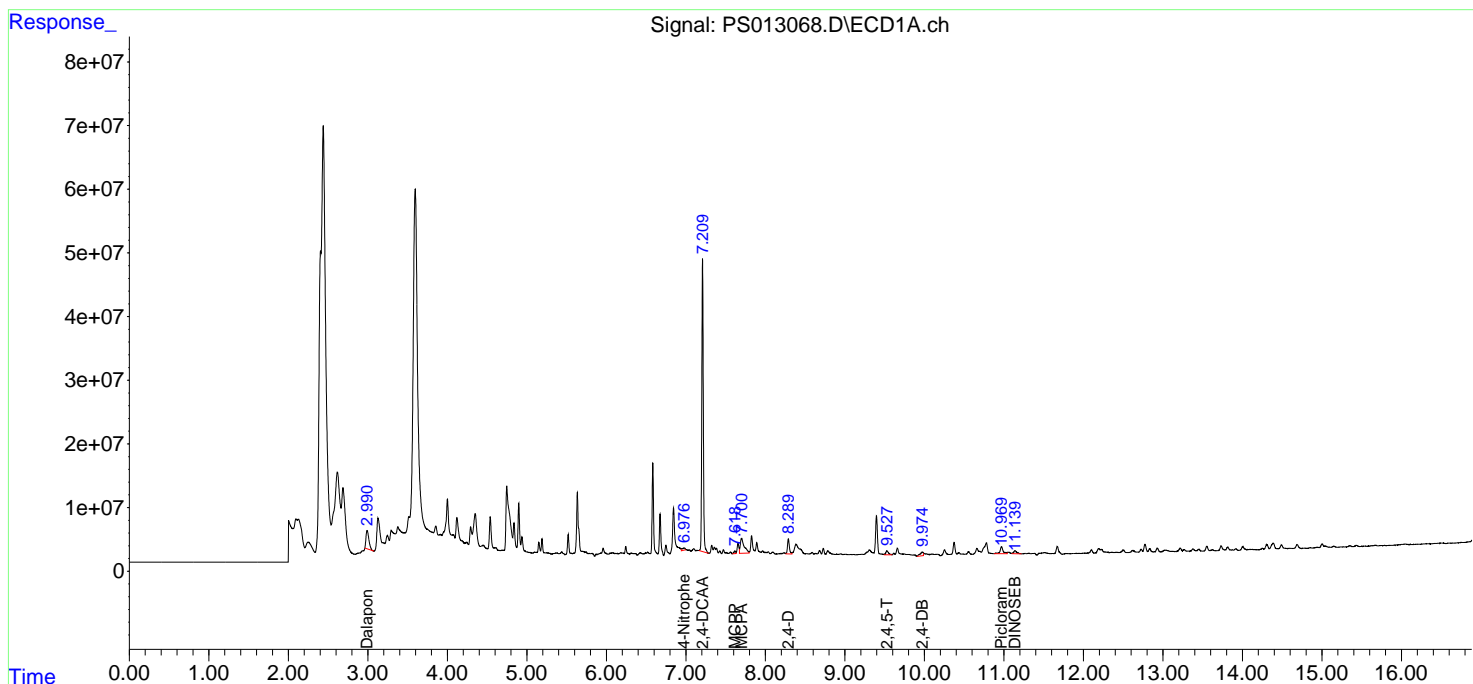
(f)=RT Delta > 1/2 Window (#)=Amounts differ by > 25% (m)=manual int.

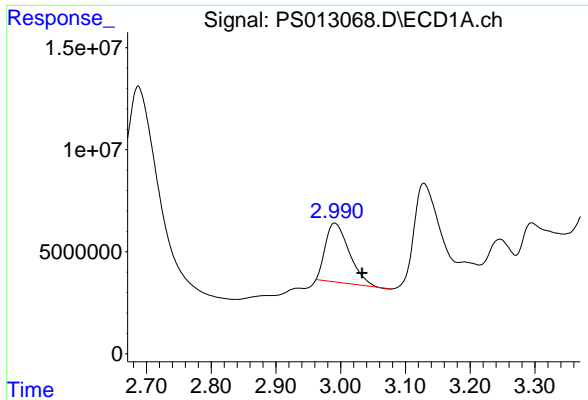
Data Path : Z:\pestpcbsrv\HPCHEM1\ECD_S\Data\PS103020\
 Data File : PS013068.D
 Signal(s) : Signal #1: ECD1A.ch Signal #2: ECD2B.ch
 Acq On : 30 Oct 2020 22:01
 Operator : DD\AJ
 Sample : L4549-02
 Misc :
 ALS Vial : 29 Sample Multiplier: 1

Instrument :
 ECD_S
 ClientSampled :

Integration File signal 1: autoint1.e
 Integration File signal 2: autoint2.e
 Quant Time: Oct 31 06:06:40 2020
 Quant Method : Z:\pestpcbsrv\HPCHEM1\ECD_S\Method\PS102020.M
 Quant Title : 8080.M
 QLast Update : Wed Oct 21 02:27:47 2020
 Response via : Initial Calibration
 Integrator: ChemStation

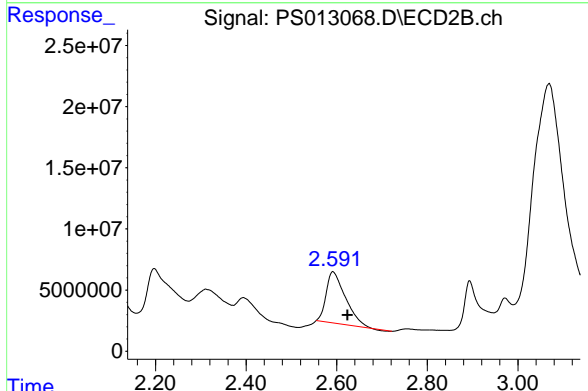
Volume Inj. : 2 µl
 Signal #1 Phase : Rtx-CLPesticides Signal #2 Phase: Rtx-CLPesticides2
 Signal #1 Info : 30M x 0.32mm x0.5 Signal #2 Info : 30M x 0.32mm x 0.25µm



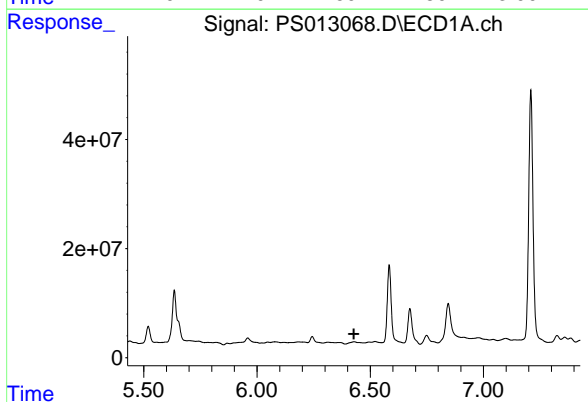


#1 Dalapon
 R.T.: 2.991 min
 Delta R.T.: -0.042 min
 Response: 73447835
 Conc: 72.25 ng/ml

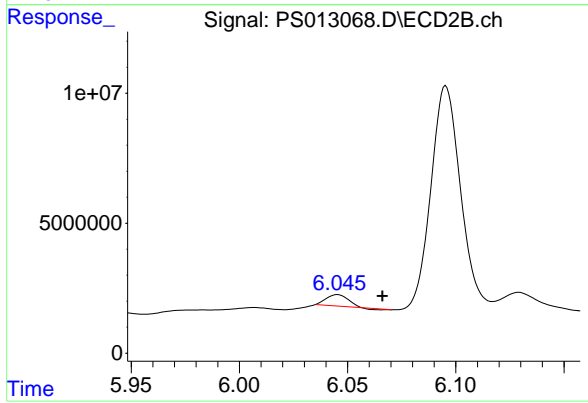
Instrument :
 ECD_S
 ClientSampled :



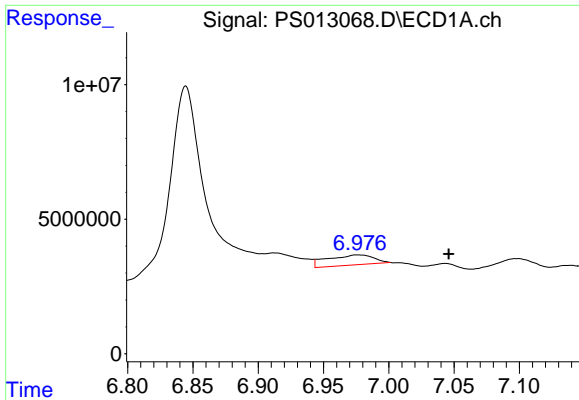
#1 Dalapon
 R.T.: 2.591 min
 Delta R.T.: -0.032 min
 Response: 122944696
 Conc: 233.79 ng/ml



#2 3,5-DICHLOROBENZOIC ACID
 R.T.: 0.000 min
 Exp R.T. : 6.428 min
 Response: 0
 Conc: N.D.

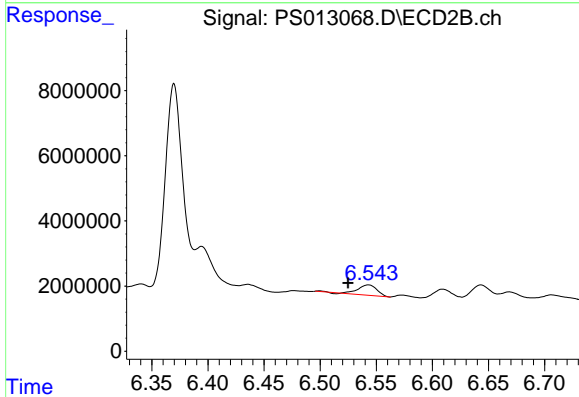


#2 3,5-DICHLOROBENZOIC ACID
 R.T.: 6.045 min
 Delta R.T.: -0.021 min
 Response: 2934586
 Conc: 4.66 ng/ml

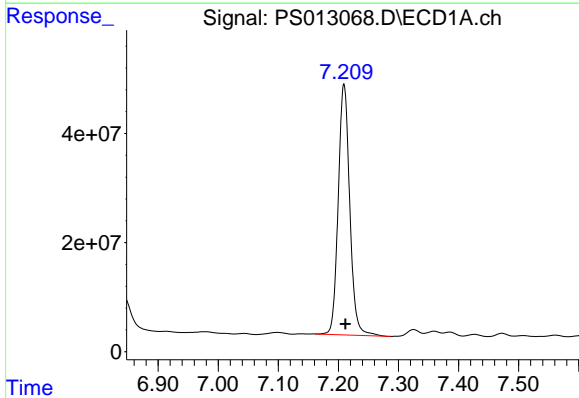


#3 4-Nitrophenol
R.T.: 6.977 min
Delta R.T.: -0.069 min
Response: 9910048
Conc: 23.70 ng/ml

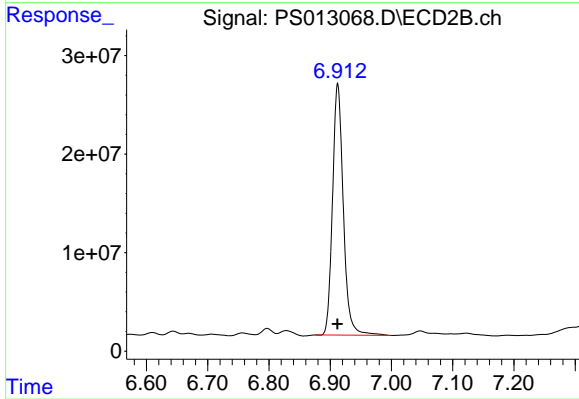
Instrument :
ECD_S
ClientSampled :



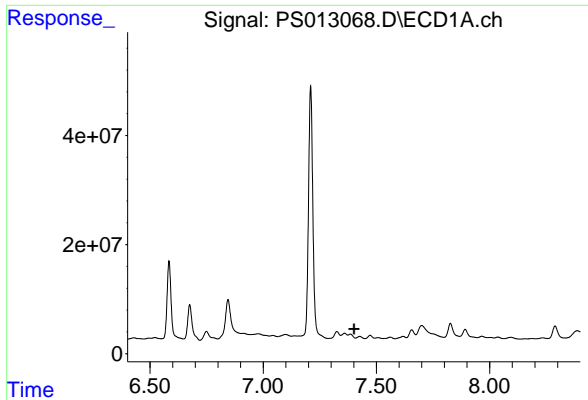
#3 4-Nitrophenol
R.T.: 6.543 min
Delta R.T.: 0.018 min
Response: 3714404
Conc: 15.97 ng/ml



#4 2,4-DCAA
R.T.: 7.209 min
Delta R.T.: -0.002 min
Response: 612705231
Conc: 684.53 ng/ml



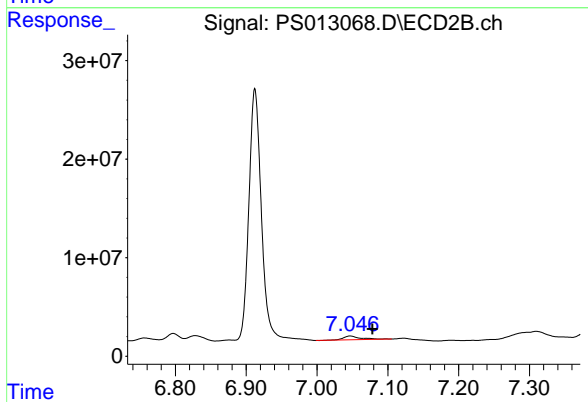
#4 2,4-DCAA
R.T.: 6.912 min
Delta R.T.: 0.000 min
Response: 312755273
Conc: 779.45 ng/ml



#5 DICAMBA

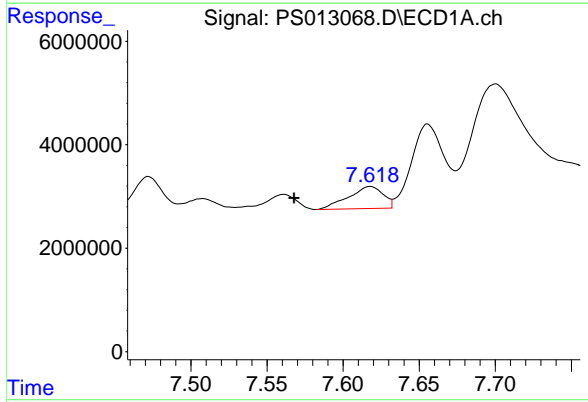
R.T.: 0.000 min
 Exp R.T.: 7.401 min
 Response: 0
 Conc: N.D.

Instrument :
 ECD_S
 ClientSampleId :



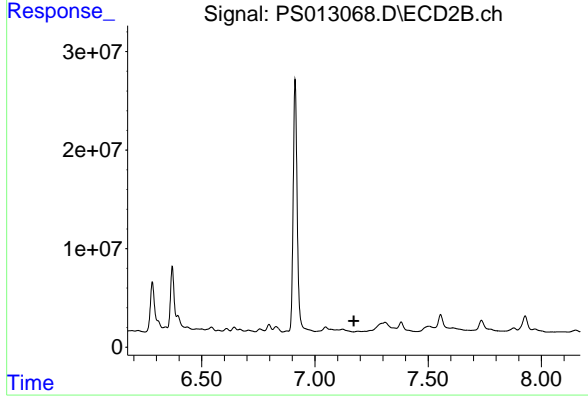
#5 DICAMBA

R.T.: 7.047 min
 Delta R.T.: -0.031 min
 Response: 6651988
 Conc: 3.91 ng/ml



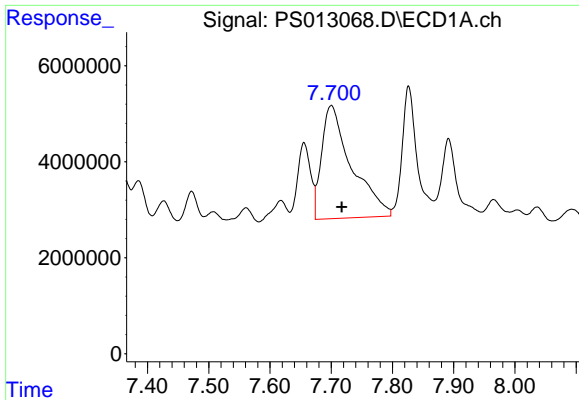
#6 MCP

R.T.: 7.618 min
 Delta R.T.: 0.050 min
 Response: 6721560
 Conc: 2.52 ug/ml



#6 MCP

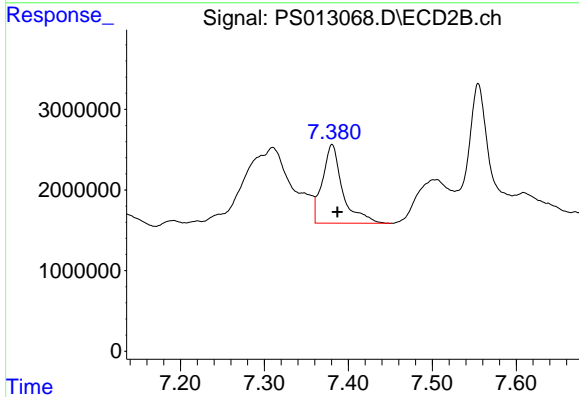
R.T.: 0.000 min
 Exp R.T.: 7.172 min
 Response: 0
 Conc: N.D.



#7 MCPA

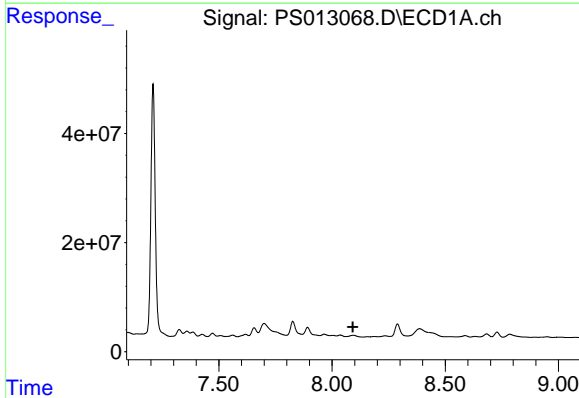
R.T.: 7.700 min
 Delta R.T.: -0.017 min
 Response: 79974316
 Conc: 20.89 ug/ml

Instrument :
 ECD_S
 ClientSampled :



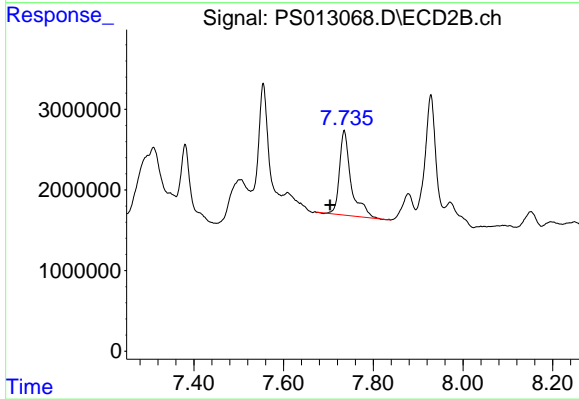
#7 MCPA

R.T.: 7.381 min
 Delta R.T.: -0.006 min
 Response: 16347834
 Conc: 7.46 ug/ml



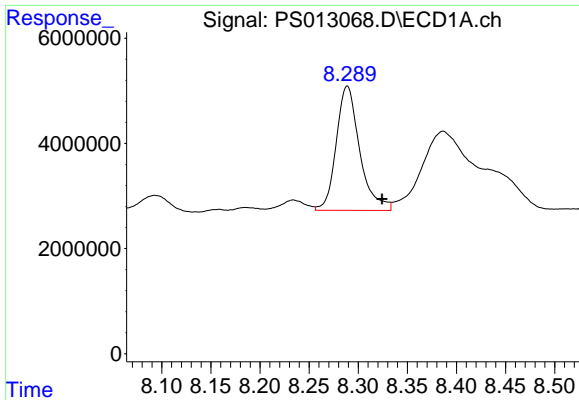
#8 DICHLORPROP

R.T.: 0.000 min
 Exp R.T. : 8.092 min
 Response: 0
 Conc: N.D.



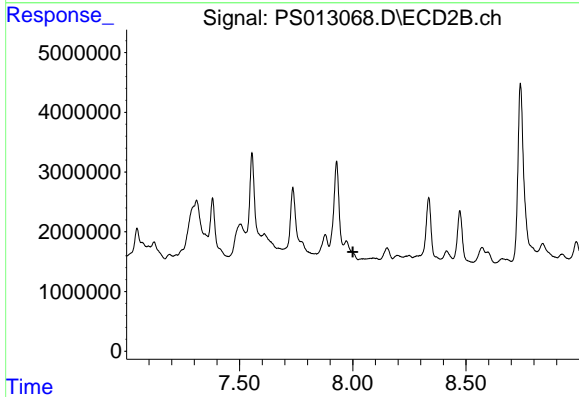
#8 DICHLORPROP

R.T.: 7.735 min
 Delta R.T.: 0.032 min
 Response: 18925931
 Conc: 41.20 ng/ml

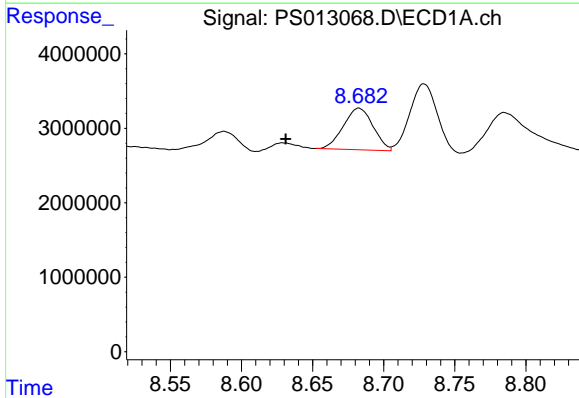


#9 2,4-D
 R.T.: 8.289 min
 Delta R.T.: -0.036 min
 Response: 39336197
 Conc: 38.12 ng/ml

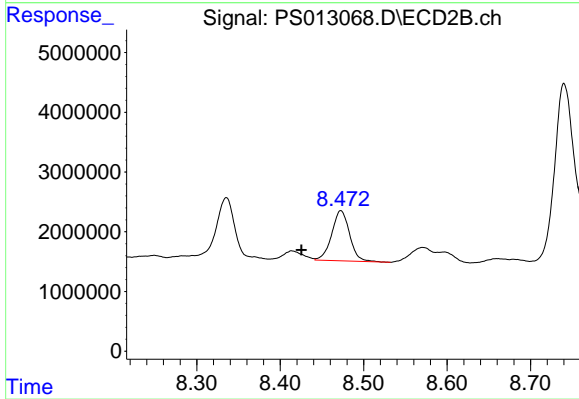
Instrument :
 ECD_S
 ClientSampleId :



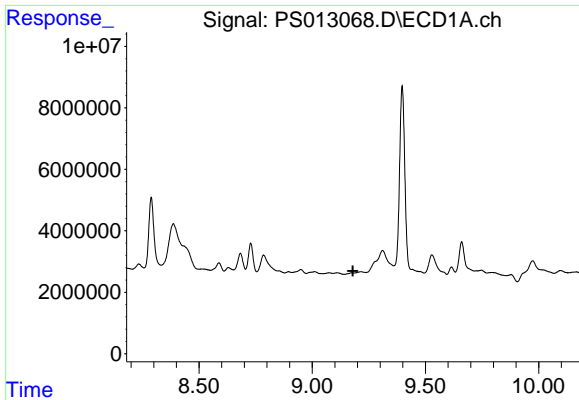
#9 2,4-D
 R.T.: 0.000 min
 Exp R.T. : 8.001 min
 Response: 0
 Conc: N.D.



#10 Pentachlorophenol
 R.T.: 8.683 min
 Delta R.T.: 0.051 min
 Response: 8151362
 Conc: N.D.



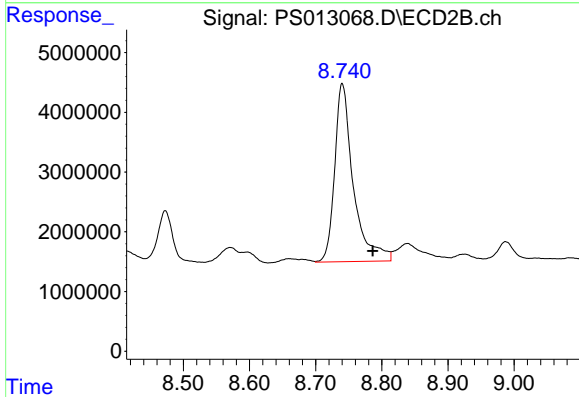
#10 Pentachlorophenol
 R.T.: 8.473 min
 Delta R.T.: 0.047 min
 Response: 12518856
 Conc: 2.22 ng/ml



#11 2,4,5-TP (SILVEX)

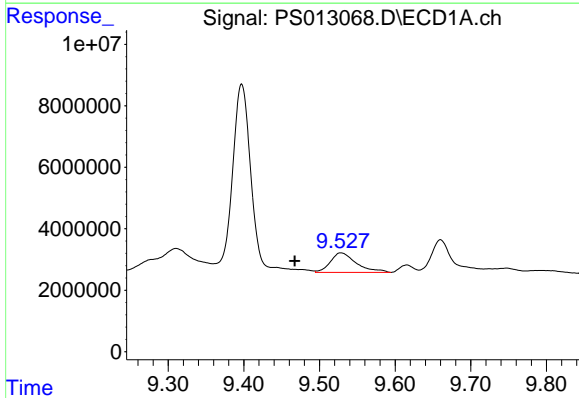
R.T.: 0.000 min
 Exp R.T.: 9.180 min
 Response: 0
 Conc: N.D.

Instrument :
 ECD_S
 ClientSampled :



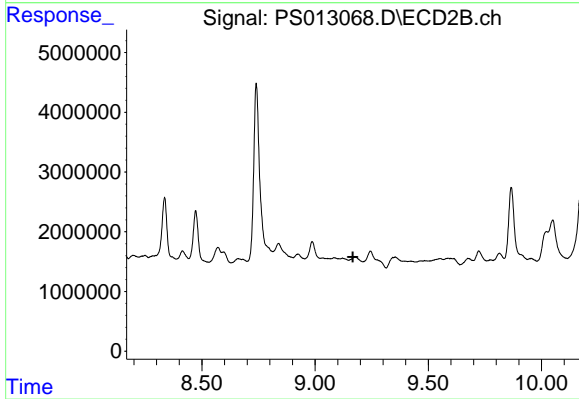
#11 2,4,5-TP (SILVEX)

R.T.: 8.740 min
 Delta R.T.: -0.046 min
 Response: 5833511
 Conc: 24.61 ng/ml



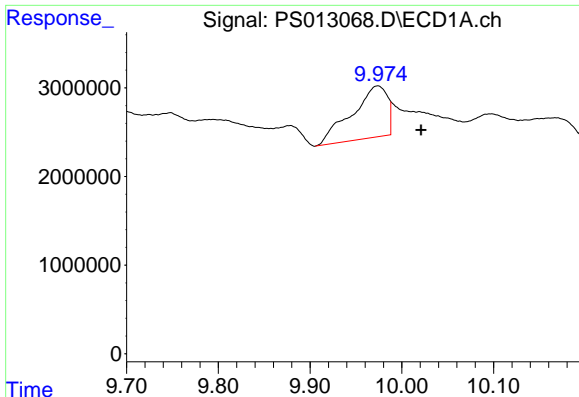
#12 2,4,5-T

R.T.: 9.529 min
 Delta R.T.: 0.062 min
 Response: 15127816
 Conc: 2.89 ng/ml



#12 2,4,5-T

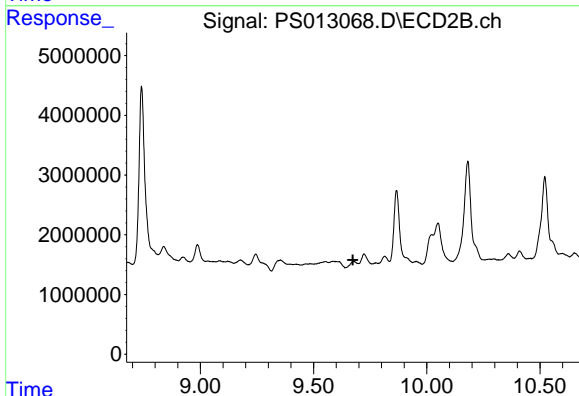
R.T.: 0.000 min
 Exp R.T.: 9.167 min
 Response: 0
 Conc: N.D.



#13 2,4-DB

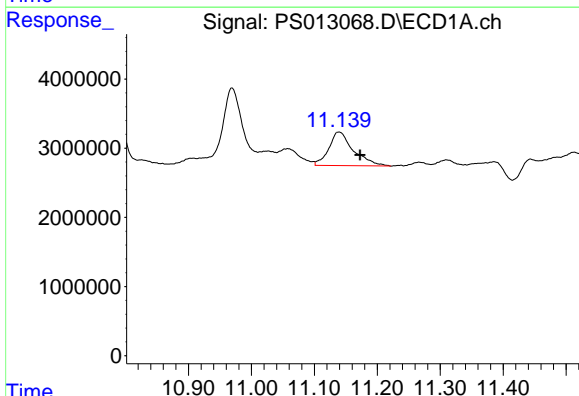
R.T.: 9.974 min
 Delta R.T.: -0.047 min
 Response: 15700170
 Conc: 18.60 ng/ml

Instrument :
 ECD_S
 ClientSampled :



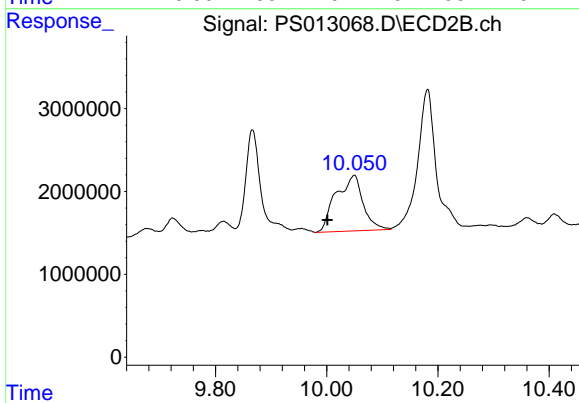
#13 2,4-DB

R.T.: 0.000 min
 Exp R.T. : 9.674 min
 Response: 0
 Conc: N.D.



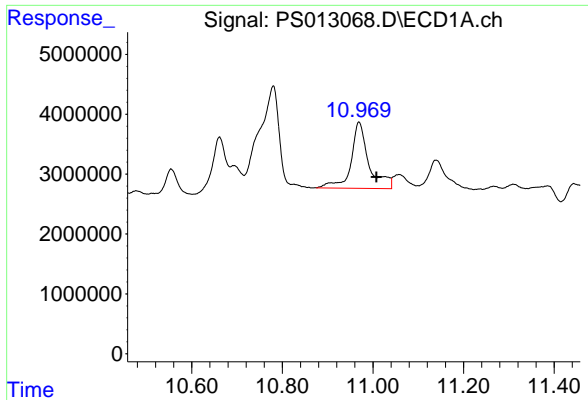
#14 DINOSEB

R.T.: 11.139 min
 Delta R.T.: -0.034 min
 Response: 13184283
 Conc: 3.08 ng/ml



#14 DINOSEB

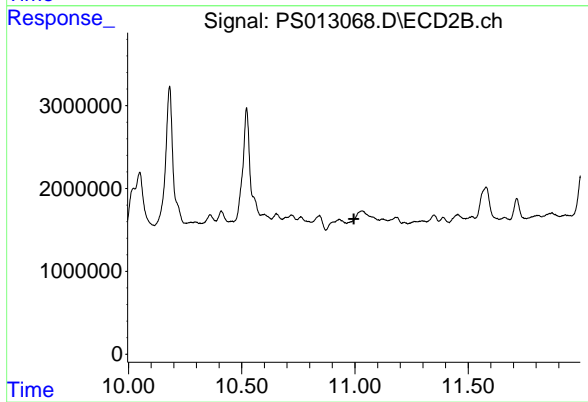
R.T.: 10.049 min
 Delta R.T.: 0.048 min
 Response: 22749348
 Conc: 13.53 ng/ml



#15 Picloram

R.T.: 10.969 min
Delta R.T.: -0.038 min
Response: 30109900
Conc: 4.76 ng/ml

Instrument :
ECD_S
ClientSampleId :



#15 Picloram

R.T.: 0.000 min
Exp R.T. : 10.995 min
Response: 0
Conc: N.D.