

Data Path : Z:\pestpcbsrv\HPCHEM1\ECD\_S\Data\PS103020\  
 Data File : PS013073.D  
 Signal(s) : Signal #1: ECD1A.ch Signal #2: ECD2B.ch  
 Acq On : 30 Oct 2020 23:56  
 Operator : DD\AJ  
 Sample : I.BLK  
 Misc :  
 ALS Vial : 2 Sample Multiplier: 1

Instrument :  
 ECD\_S  
 ClientSampleId :  
 I.BLK

Integration File signal 1: autoint1.e  
 Integration File signal 2: autoint2.e  
 Quant Time: Oct 31 06:08:33 2020  
 Quant Method : Z:\pestpcbsrv\HPCHEM1\ECD\_S\Method\PS102020.M  
 Quant Title : 8080.M  
 QLast Update : Wed Oct 21 02:27:47 2020  
 Response via : Initial Calibration  
 Integrator: ChemStation

Volume Inj. : 2 µl  
 Signal #1 Phase : Rtx-CLPesticides Signal #2 Phase: Rtx-CLPesticides2  
 Signal #1 Info : 30M x 0.32mm x0.5 Signal #2 Info : 30M x 0.32mm x 0.25µm

Compound	RT#1	RT#2	Resp#1	Resp#2	ng/ml	ng/ml
-----						
System Monitoring Compounds						
4) S 2,4-DCAA	7.211	6.915	417.1E6	220.0E6	466.050	548.231

Target Compounds

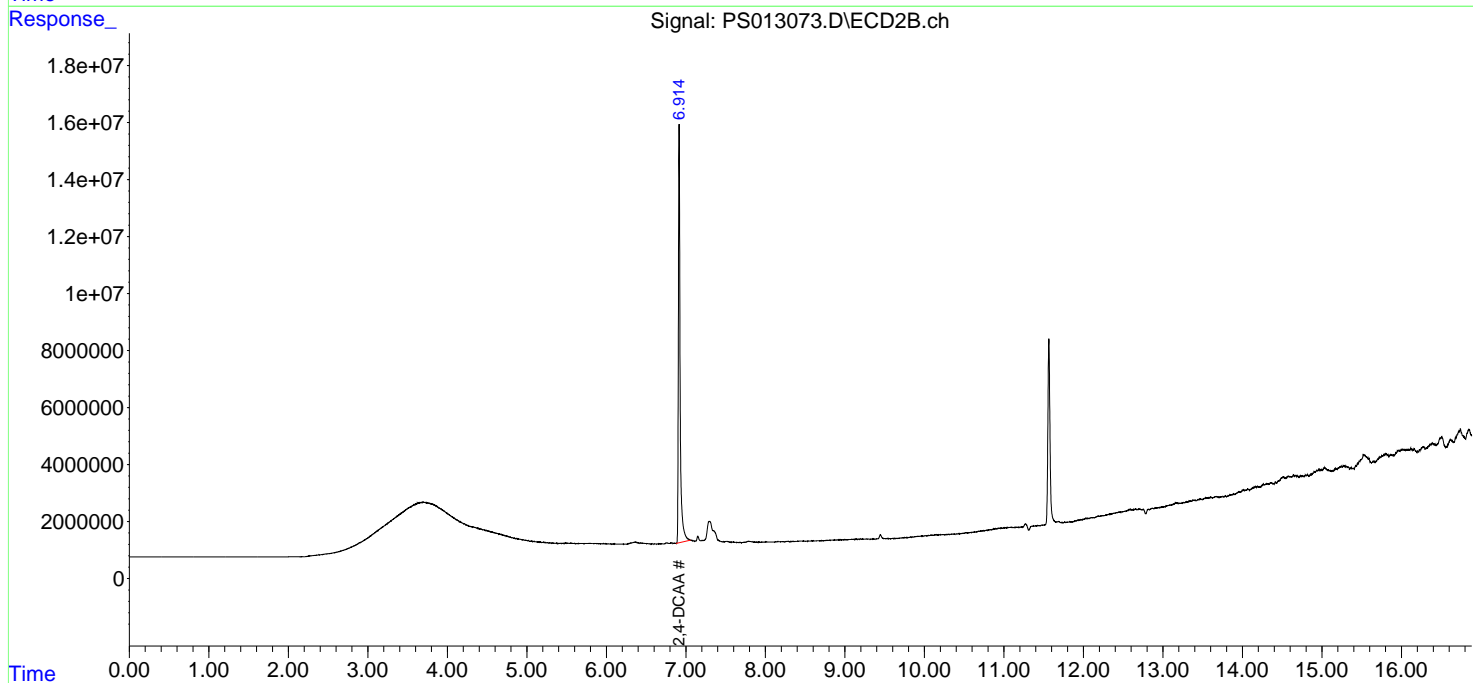
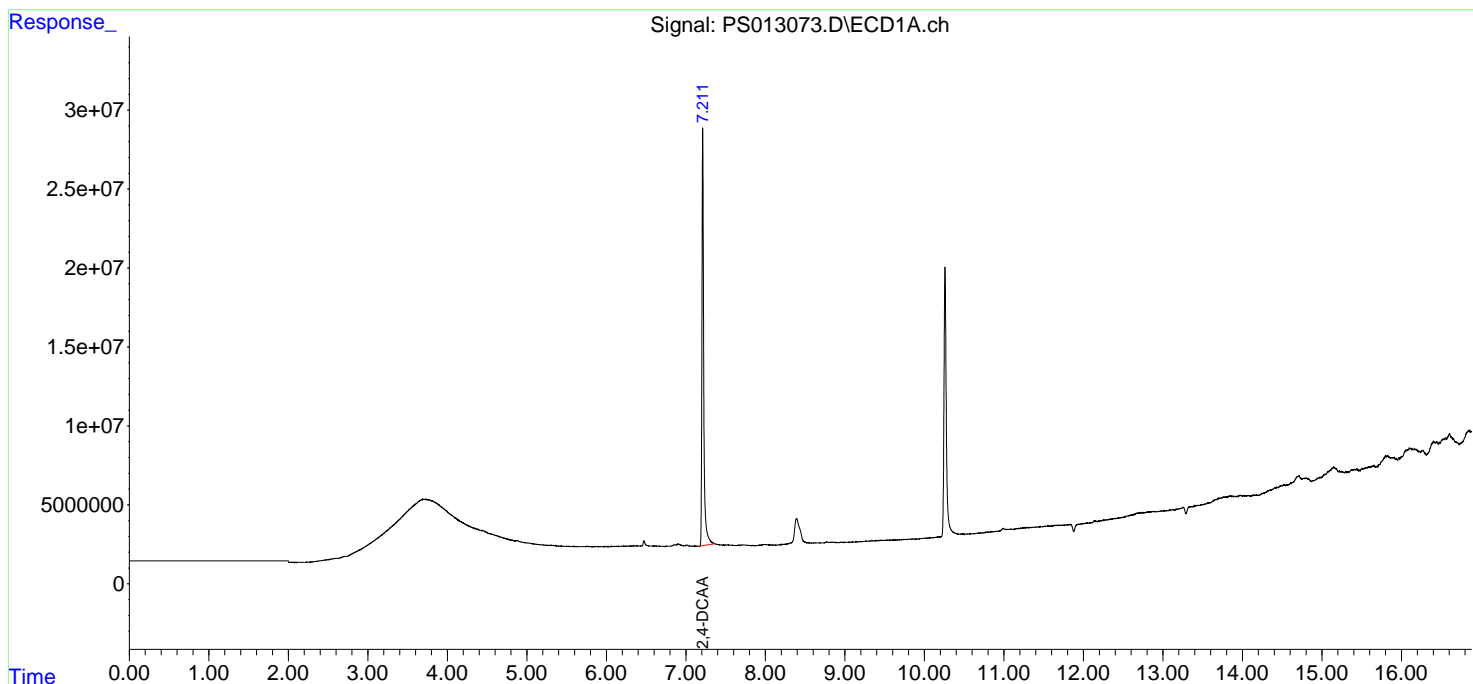
(f)=RT Delta > 1/2 Window (#)=Amounts differ by > 25% (m)=manual int.

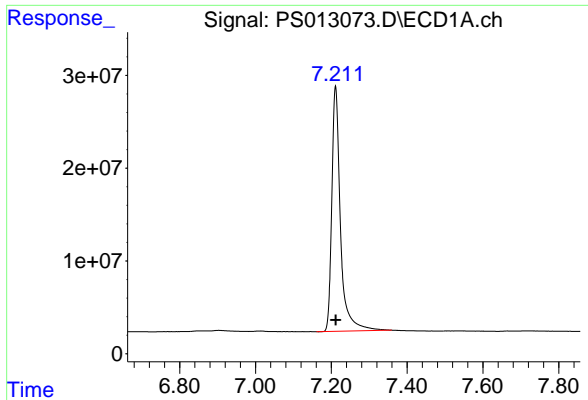
Data Path : Z:\pestpcbsrv\HPCHEM1\ECD\_S\Data\PS103020\  
Data File : PS013073.D  
Signal(s) : Signal #1: ECD1A.ch Signal #2: ECD2B.ch  
Acq On : 30 Oct 2020 23:56  
Operator : DD\AJ  
Sample : I.BLK  
Misc :  
ALS Vial : 2 Sample Multiplier: 1

Instrument :  
ECD\_S  
ClientSampleId :  
I.BLK

Integration File signal 1: autoint1.e  
Integration File signal 2: autoint2.e  
Quant Time: Oct 31 06:08:33 2020  
Quant Method : Z:\pestpcbsrv\HPCHEM1\ECD\_S\Method\PS102020.M  
Quant Title : 8080.M  
QLast Update : Wed Oct 21 02:27:47 2020  
Response via : Initial Calibration  
Integrator: ChemStation

Volume Inj. : 2 µl  
Signal #1 Phase : Rtx-CLPesticides Signal #2 Phase: Rtx-CLPesticides2  
Signal #1 Info : 30M x 0.32mm x 0.5 Signal #2 Info : 30M x 0.32mm x 0.25µm

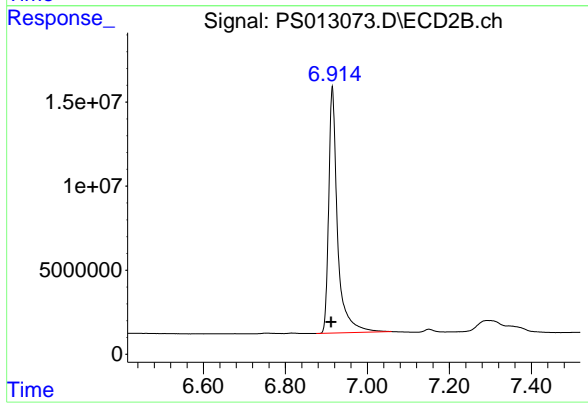




#4 2,4-DCAA

R.T.: 7.211 min  
Delta R.T.: 0.000 min  
Response: 417147225  
Conc: 466.05 ng/ml

Instrument :  
ECD\_S  
ClientSampleId :  
I.BLK



#4 2,4-DCAA

R.T.: 6.915 min  
Delta R.T.: 0.003 min  
Response: 219978668  
Conc: 548.23 ng/ml