

Data Path : Z:\pestpcbsrv\HPCHEM1\ECD_S\Data\PS103024\
 Data File : PS028097.D
 Signal(s) : Signal #1: ECD1A.ch Signal #2: ECD2B.ch
 Acq On : 30 Oct 2024 23:20
 Operator : AR\AJ
 Sample : P4597-04
 Misc :
 ALS Vial : 17 Sample Multiplier: 1

Instrument :
 ECD_S
 ClientSampleId :
 RED-1-2

Integration File signal 1: autoint1.e
 Integration File signal 2: autoint2.e
 Quant Time: Oct 30 23:46:58 2024
 Quant Method : Z:\pestpcbsrv\HPCHEM1\ECD_S\Method\PS103024.M
 Quant Title : 8080.M
 QLast Update : Wed Oct 30 15:13:59 2024
 Response via : Initial Calibration
 Integrator: ChemStation

Volume Inj. : 1 µl
 Signal #1 Phase : ZB-MR1 Signal #2 Phase: ZB-MR2
 Signal #1 Info : 30M x 0.32mm x0.5 Signal #2 Info : 30M x 0.32mm x 0.25µm

Compound	RT#1	RT#2	Resp#1	Resp#2	ng/ml	ng/ml

System Monitoring Compounds						
4) S 2,4-DCAA	7.059	7.595	1225.3E6	358.9E6	414.414	289.905 #

Target Compounds

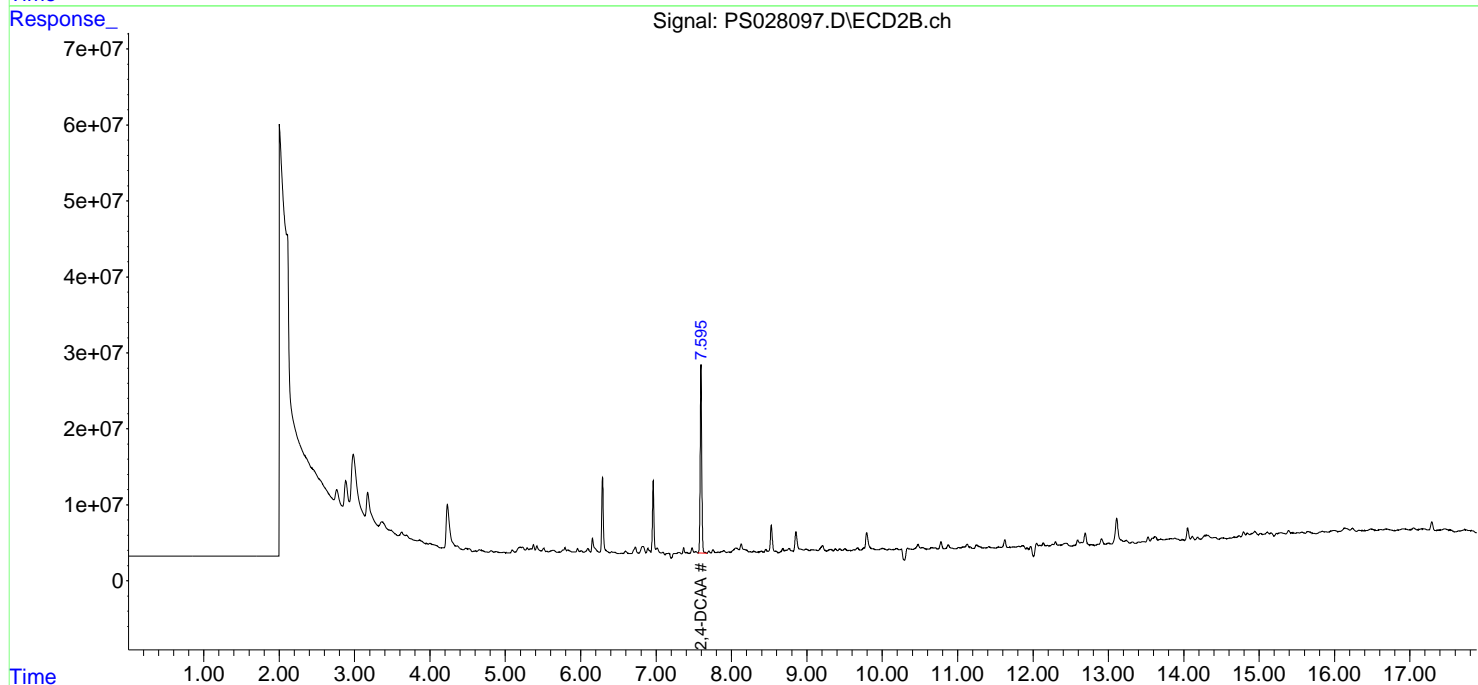
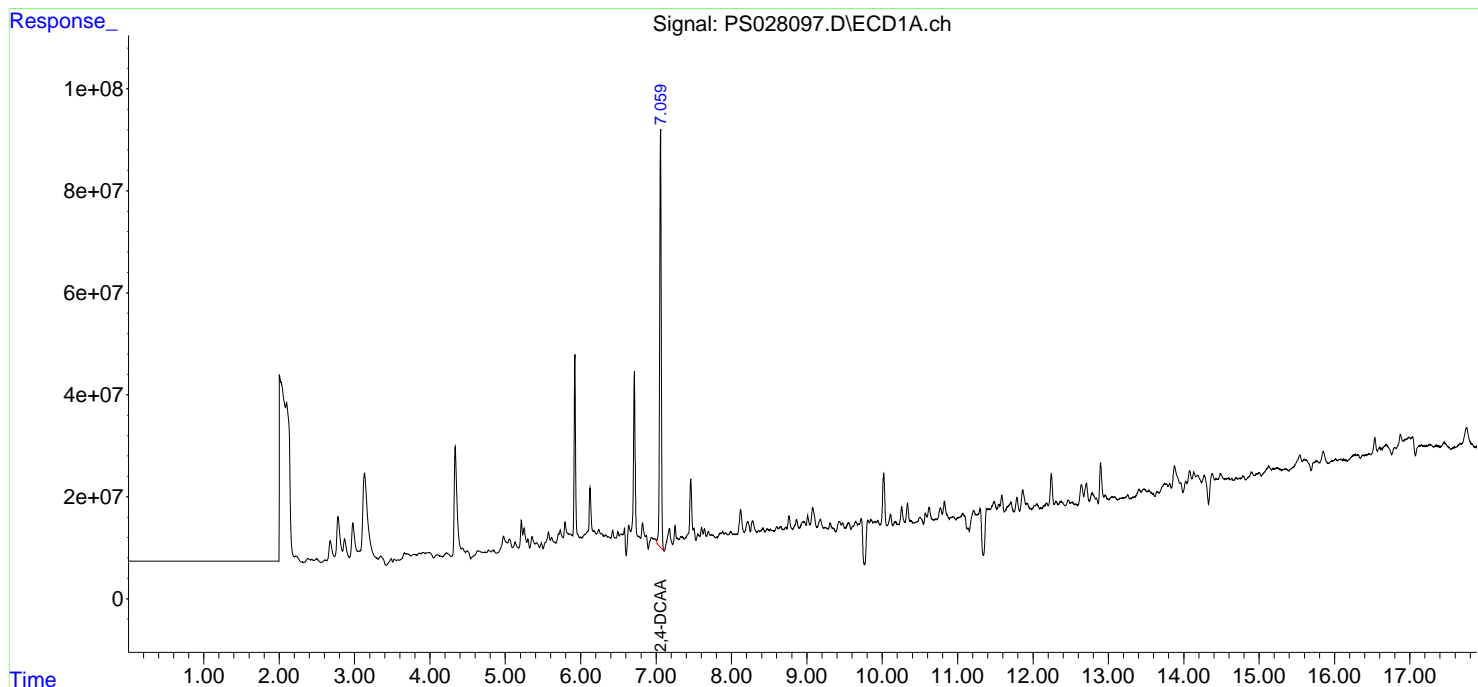
(f)=RT Delta > 1/2 Window (#)=Amounts differ by > 25% (m)=manual int.

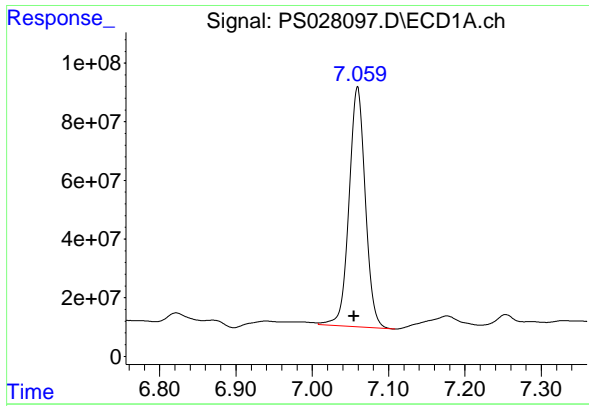
Data Path : Z:\pestpcbsrv\HPCHEM1\ECD_S\Data\PS103024\
 Data File : PS028097.D
 Signal(s) : Signal #1: ECD1A.ch Signal #2: ECD2B.ch
 Acq On : 30 Oct 2024 23:20
 Operator : AR\AJ
 Sample : P4597-04
 Misc :
 ALS Vial : 17 Sample Multiplier: 1

Instrument :
 ECD_S
 ClientSampleId :
 RED-1-2

Integration File signal 1: autoint1.e
 Integration File signal 2: autoint2.e
 Quant Time: Oct 30 23:46:58 2024
 Quant Method : Z:\pestpcbsrv\HPCHEM1\ECD_S\Method\PS103024.M
 Quant Title : 8080.M
 QLast Update : Wed Oct 30 15:13:59 2024
 Response via : Initial Calibration
 Integrator: ChemStation

Volume Inj. : 1 µl
 Signal #1 Phase : ZB-MR1 Signal #2 Phase: ZB-MR2
 Signal #1 Info : 30M x 0.32mm x 0.5 Signal #2 Info : 30M x 0.32mm x 0.25µm

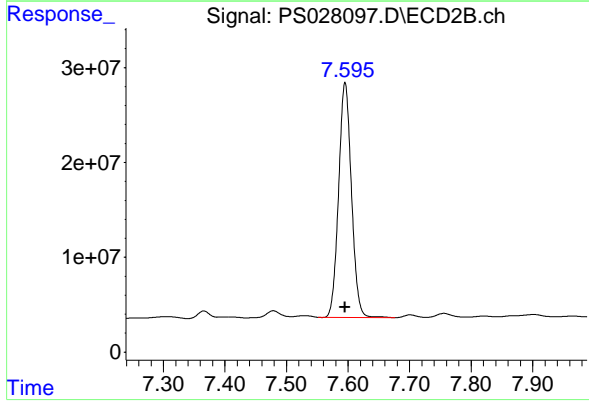




#4 2,4-DCAA

R.T.: 7.059 min
Delta R.T.: 0.005 min
Response: 1225313774
Conc: 414.41 ng/ml

Instrument :
ECD_S
ClientSampleId :
RED-1-2



#4 2,4-DCAA

R.T.: 7.595 min
Delta R.T.: 0.000 min
Response: 358856209
Conc: 289.91 ng/ml