

Data Path : Z:\pestpcbsrv\HPCHEM1\ECD\_S\Data\PS103124\  
 Data File : PS028115.D  
 Signal(s) : Signal #1: ECD1A.ch Signal #2: ECD2B.ch  
 Acq On : 31 Oct 2024 16:05  
 Operator : AR\AJ  
 Sample : PB164412BS  
 Misc :  
 ALS Vial : 9 Sample Multiplier: 1

Instrument :  
 ECD\_S  
 ClientSampleId :  
 PB164412BS

Integration File signal 1: autoint1.e  
 Integration File signal 2: autoint2.e  
 Quant Time: Nov 01 02:21:04 2024  
 Quant Method : Z:\pestpcbsrv\HPCHEM1\ECD\_S\Method\PS103124.M  
 Quant Title : 8080.M  
 QLast Update : Thu Oct 31 13:10:03 2024  
 Response via : Initial Calibration  
 Integrator: ChemStation

Volume Inj. : 1 µl  
 Signal #1 Phase : ZB-MR2 Signal #2 Phase: ZB-MR2  
 Signal #1 Info : 30M x 0.32mm x0.5 Signal #2 Info : 30M x 0.32mm x 0.25µm

	Compound	RT#1	RT#2	Resp#1	Resp#2	ng/ml	ng/ml
-----							
System Monitoring Compounds							
4) S	2,4-DCAA	7.063	7.613	1677.9E6	541.5E6	536.297	541.941
Target Compounds							
1) T	Dalapon	2.524	2.597	2001.2E6	1012.5E6	487.329	469.736
2) T	3,5-DICHL...	6.262	6.588	2331.3E6	782.9E6	503.320	507.605
3) T	4-Nitroph...	6.858	7.148	1126.4E6	330.8E6	478.891	485.560
5) T	DICAMBA	7.240	7.806	6943.2E6	2299.6E6	507.255	505.523
6) T	MCPD	7.418	7.909	460.0E6	155.6E6	48.868	49.709
7) T	MCPA	7.561	8.148	620.8E6	220.4E6	47.982	48.639
8) T	DICHLORPROP	7.922	8.512	1722.2E6	549.7E6	506.322	502.696
9) T	2,4-D	8.144	8.837	2072.7E6	609.3E6	510.354	500.437
10) T	Pentachlo...	8.429	9.348	27438.6E6	8505.3E6	558.082	512.613
11) T	2,4,5-TP ...	8.994	9.728	10523.3E6	3210.7E6	516.509	505.213
12) T	2,4,5-T	9.278	10.143	11236.9E6	3094.3E6	518.372	505.519
13) T	2,4-DB	9.840	10.707	1719.4E6	375.8E6	505.858	496.788
14) T	DINOSEB	11.012	11.080	8234.5E6	2223.0E6	499.319	490.781
15) T	Picloram	10.828	12.159	17150.5E6	3971.6E6	497.002	479.915
16) T	DCPA	11.312	12.115	12545.3E6	3616.4E6	525.419	513.812
-----							

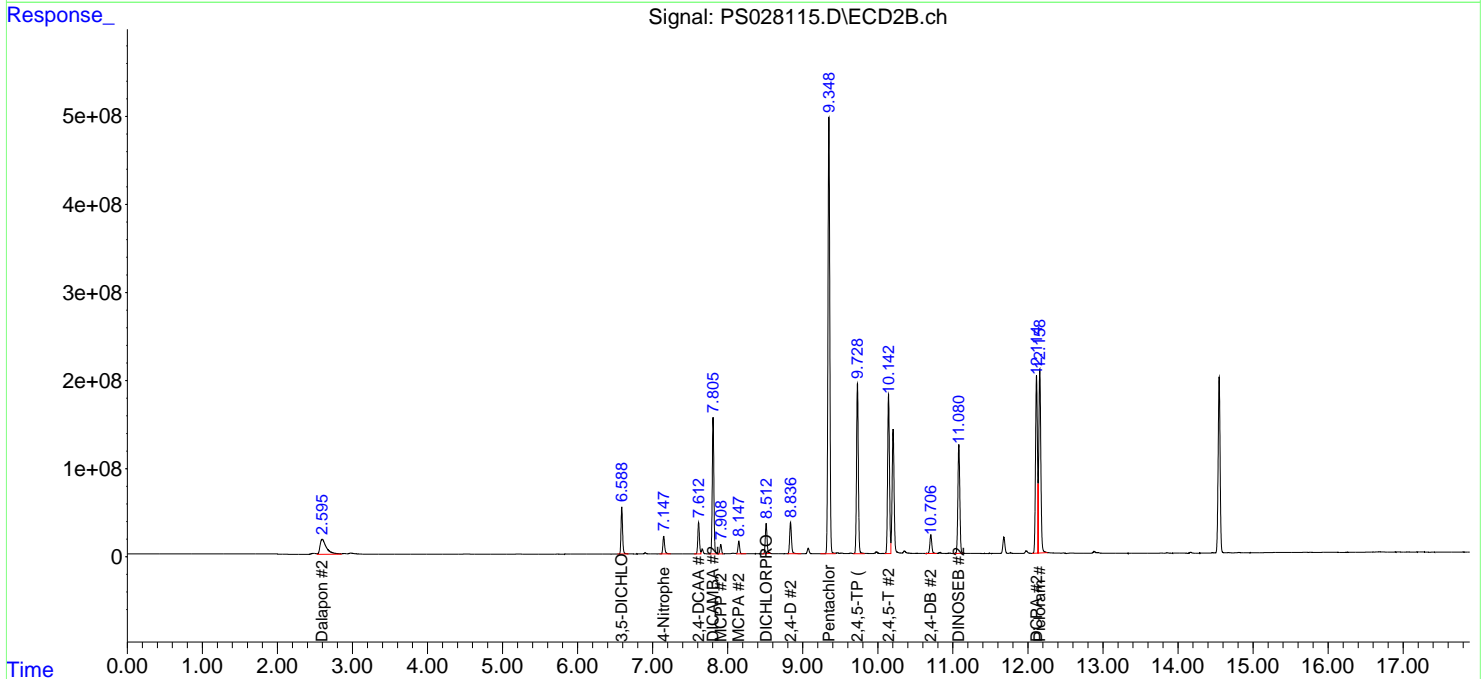
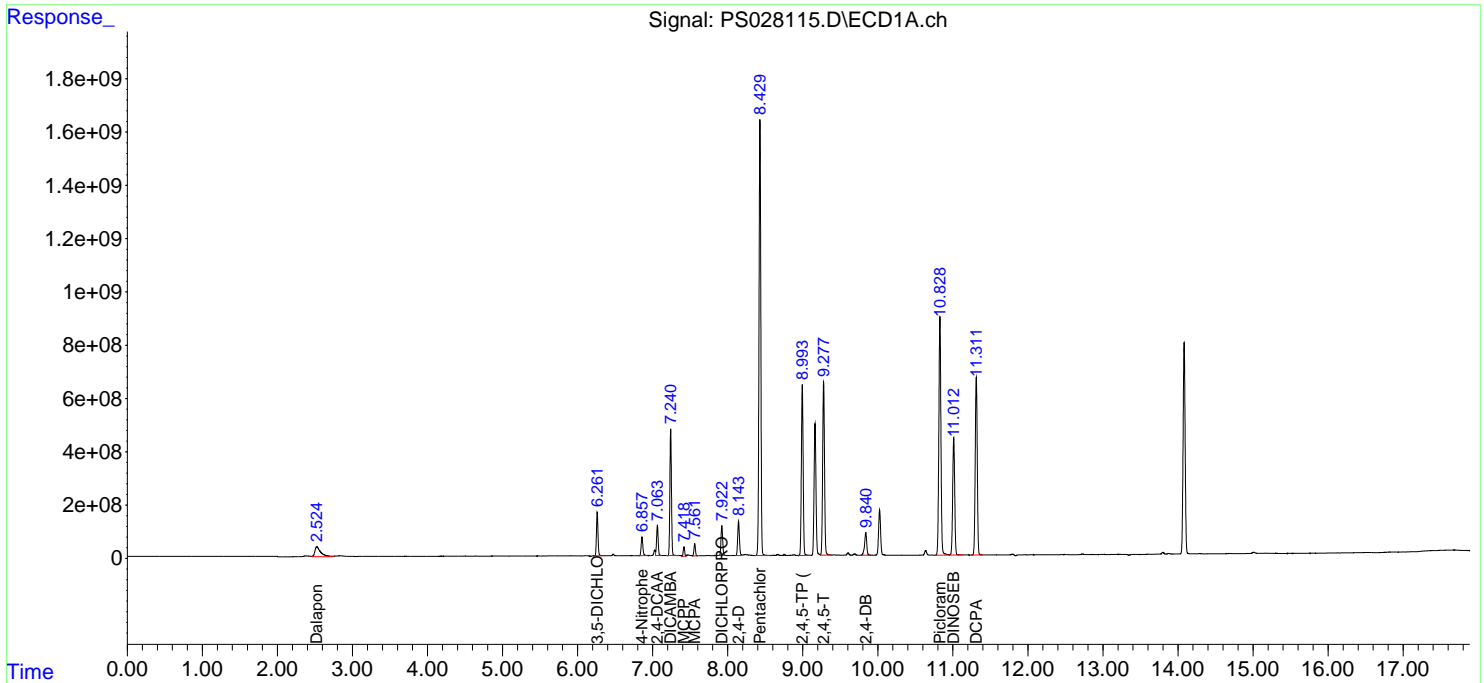
(f)=RT Delta > 1/2 Window (#)=Amounts differ by > 25% (m)=manual int.

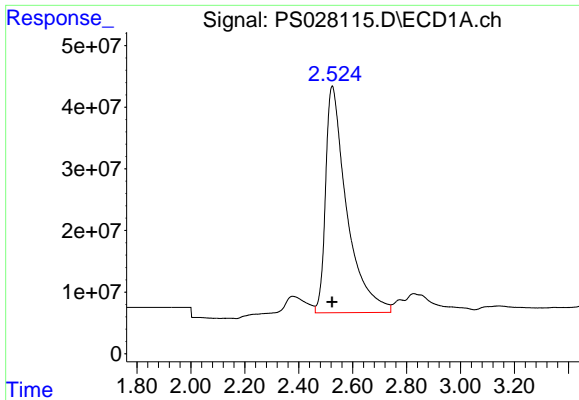
Data Path : Z:\pestpcbsrv\HPCHEM1\ECD\_S\Data\PS103124\  
 Data File : PS028115.D  
 Signal(s) : Signal #1: ECD1A.ch Signal #2: ECD2B.ch  
 Acq On : 31 Oct 2024 16:05  
 Operator : AR\AJ  
 Sample : PB164412BS  
 Misc :  
 ALS Vial : 9 Sample Multiplier: 1

Instrument :  
 ECD\_S  
 ClientSampleId :  
 PB164412BS

Integration File signal 1: autoint1.e  
 Integration File signal 2: autoint2.e  
 Quant Time: Nov 01 02:21:04 2024  
 Quant Method : Z:\pestpcbsrv\HPCHEM1\ECD\_S\Method\PS103124.M  
 Quant Title : 8080.M  
 QLast Update : Thu Oct 31 13:10:03 2024  
 Response via : Initial Calibration  
 Integrator: ChemStation

Volume Inj. : 1 µl  
 Signal #1 Phase : ZB-MR1 Signal #2 Phase: ZB-MR2  
 Signal #1 Info : 30M x 0.32mm x0.5 Signal #2 Info : 30M x 0.32mm x 0.25µm

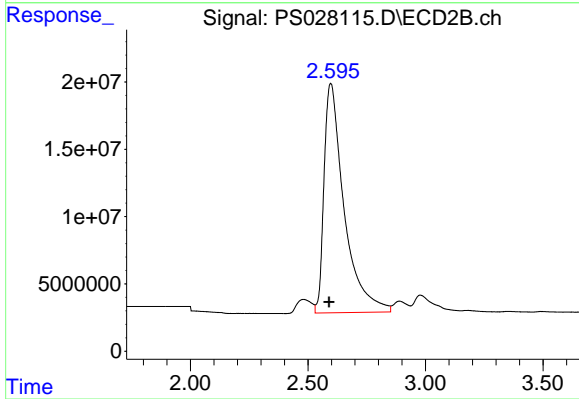




#1 Dalapon

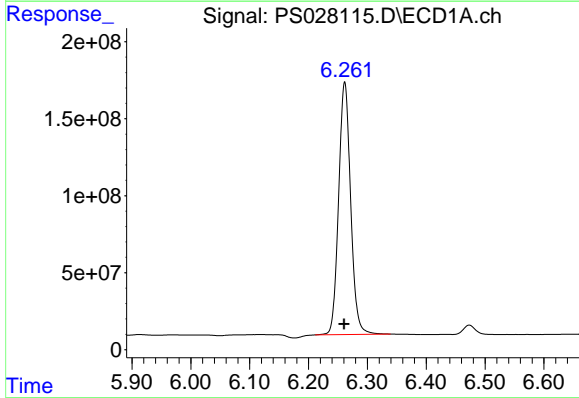
R.T.: 2.524 min  
 Delta R.T.: 0.000 min  
 Response: 2001200807  
 Conc: 487.33 ng/ml

Instrument :  
 ECD\_S  
 ClientSampleId :  
 PB164412BS



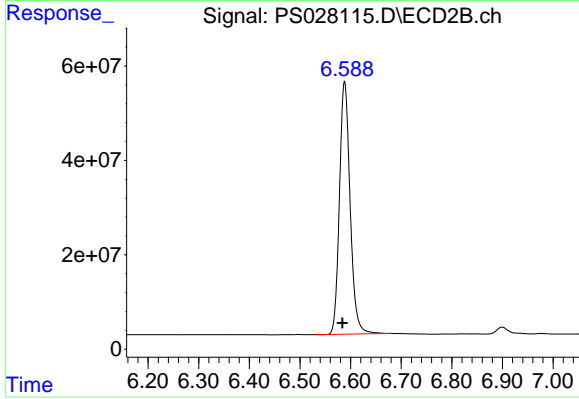
#1 Dalapon

R.T.: 2.597 min  
 Delta R.T.: 0.006 min  
 Response: 1012502601  
 Conc: 469.74 ng/ml



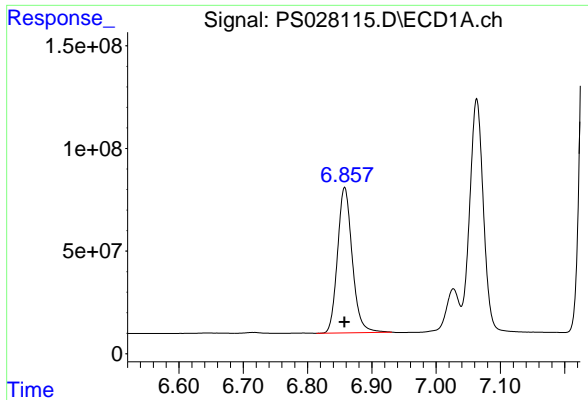
#2 3,5-DICHLOROBENZOIC ACID

R.T.: 6.262 min  
 Delta R.T.: 0.001 min  
 Response: 2331321625  
 Conc: 503.32 ng/ml



#2 3,5-DICHLOROBENZOIC ACID

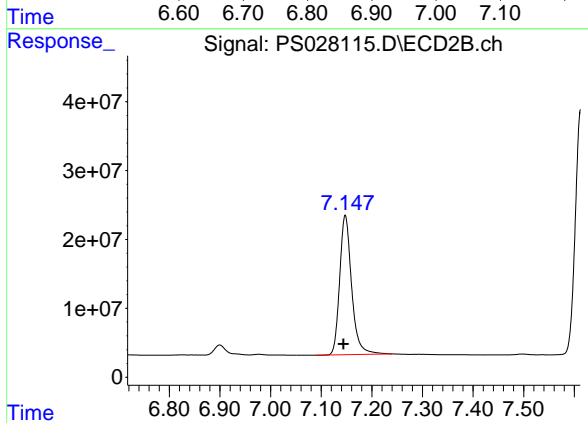
R.T.: 6.588 min  
 Delta R.T.: 0.004 min  
 Response: 782866202  
 Conc: 507.60 ng/ml



#3 4-Nitrophenol

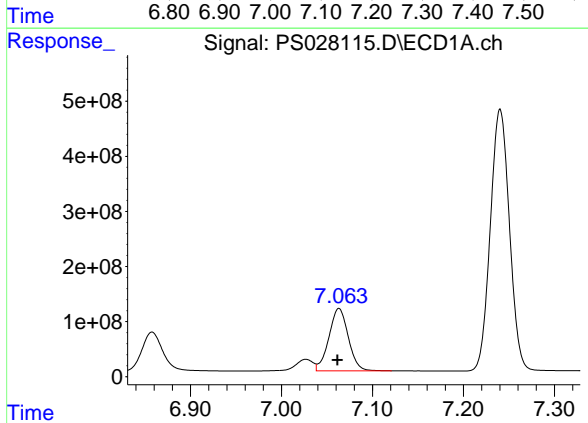
R.T.: 6.858 min  
 Delta R.T.: 0.000 min  
 Response: 1126412460  
 Conc: 478.89 ng/ml

Instrument : ECD\_S  
 ClientSampleId : PB164412BS



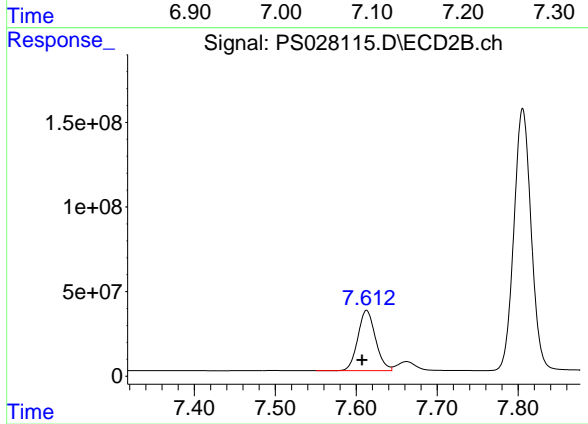
#3 4-Nitrophenol

R.T.: 7.148 min  
 Delta R.T.: 0.004 min  
 Response: 330796650  
 Conc: 485.56 ng/ml



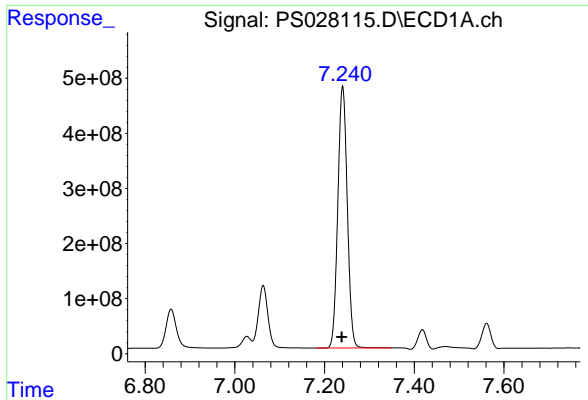
#4 2,4-DCAA

R.T.: 7.063 min  
 Delta R.T.: 0.002 min  
 Response: 1677935694  
 Conc: 536.30 ng/ml



#4 2,4-DCAA

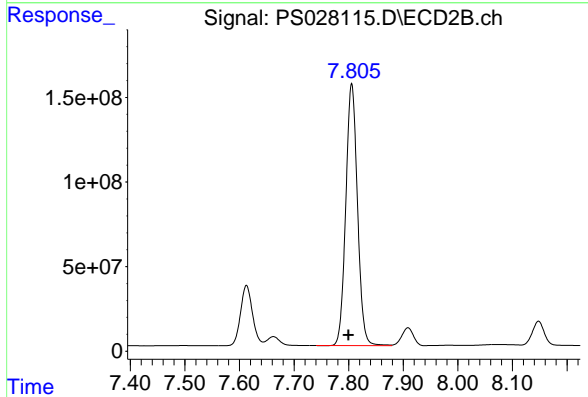
R.T.: 7.613 min  
 Delta R.T.: 0.005 min  
 Response: 541477422  
 Conc: 541.94 ng/ml



#5 DICAMBA

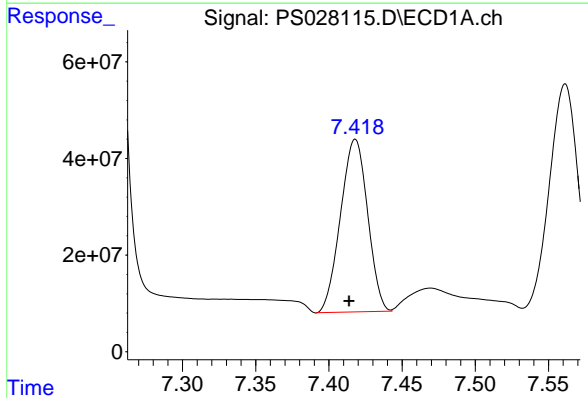
R.T.: 7.240 min  
 Delta R.T.: 0.002 min  
 Response: 6943159160  
 Conc: 507.25 ng/ml

Instrument :  
 ECD\_S  
 ClientSampleId :  
 PB164412BS



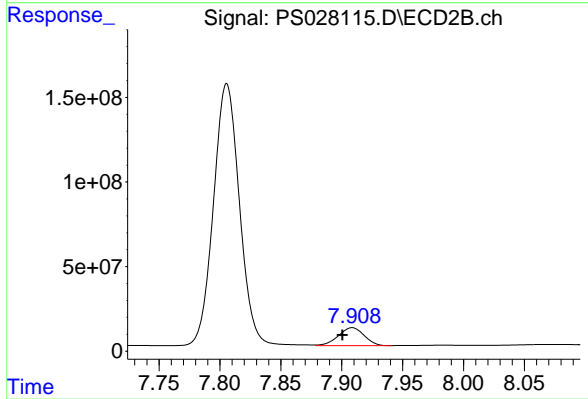
#5 DICAMBA

R.T.: 7.806 min  
 Delta R.T.: 0.006 min  
 Response: 2299646725  
 Conc: 505.52 ng/ml



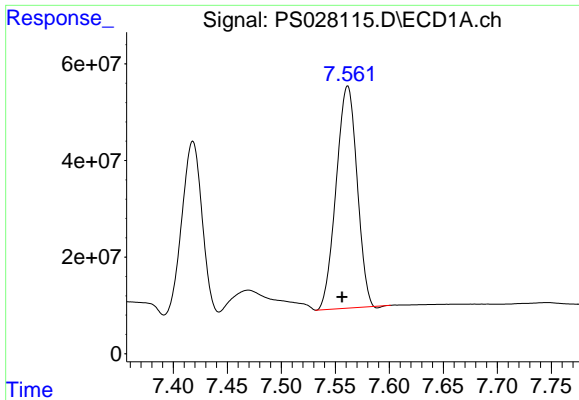
#6 MCPP

R.T.: 7.418 min  
 Delta R.T.: 0.004 min  
 Response: 459967267  
 Conc: 48.87 ug/ml



#6 MCPP

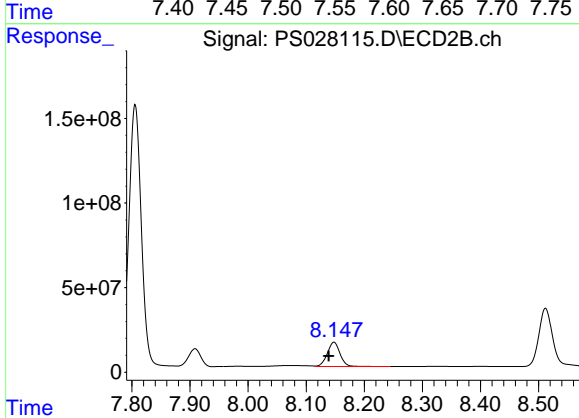
R.T.: 7.909 min  
 Delta R.T.: 0.008 min  
 Response: 155617776  
 Conc: 49.71 ug/ml



#7 MCPA

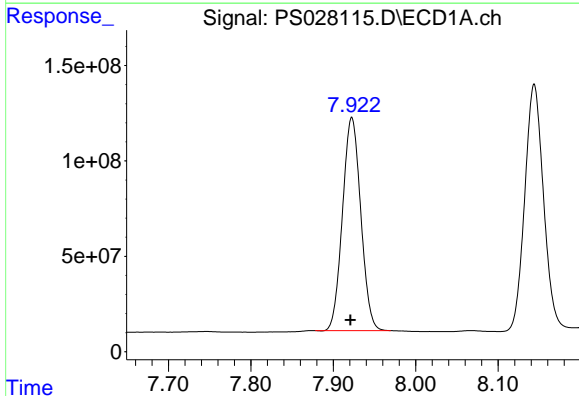
R.T.: 7.561 min  
 Delta R.T.: 0.005 min  
 Response: 620813856  
 Conc: 47.98 ug/ml

Instrument :  
 ECD\_S  
 ClientSampleId :  
 PB164412BS



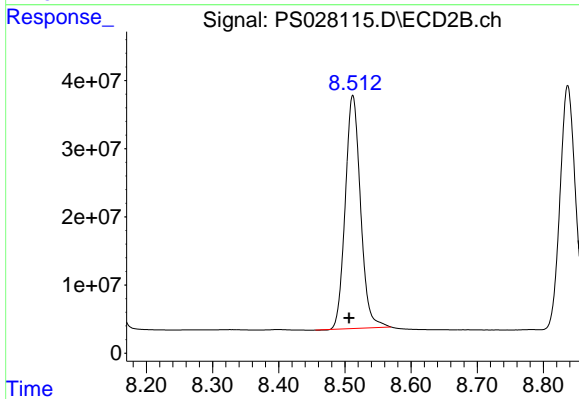
#7 MCPA

R.T.: 8.148 min  
 Delta R.T.: 0.009 min  
 Response: 220350726  
 Conc: 48.64 ug/ml



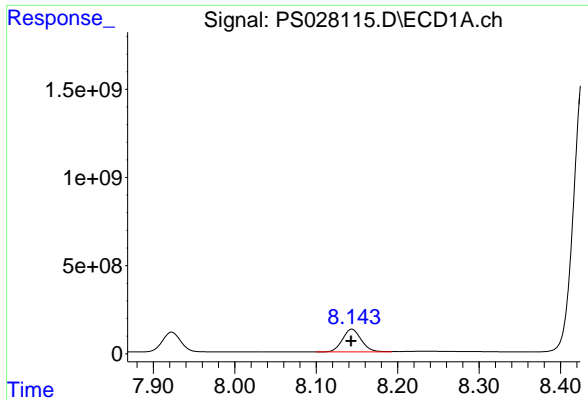
#8 DICHLORPROP

R.T.: 7.922 min  
 Delta R.T.: 0.002 min  
 Response: 1722157895  
 Conc: 506.32 ng/ml



#8 DICHLORPROP

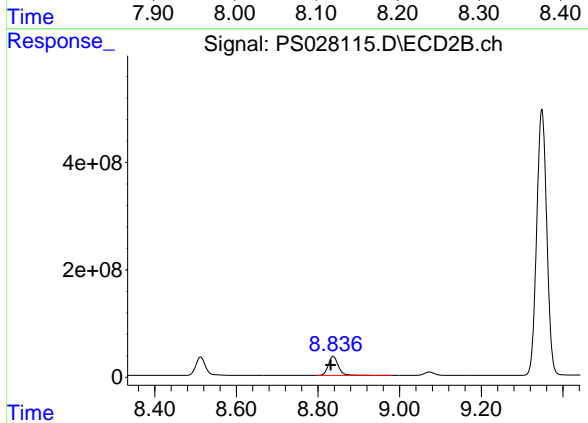
R.T.: 8.512 min  
 Delta R.T.: 0.006 min  
 Response: 549733915  
 Conc: 502.70 ng/ml



#9 2,4-D

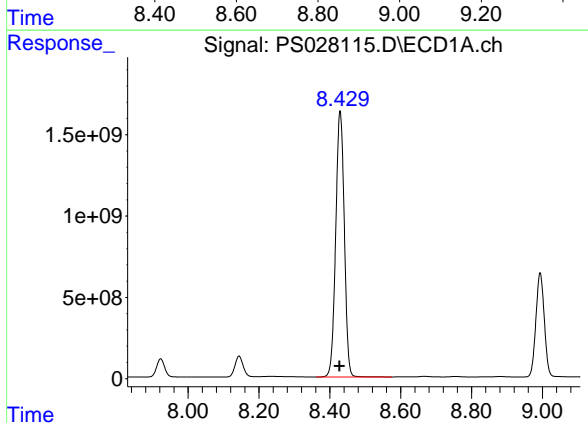
R.T.: 8.144 min  
Delta R.T.: 0.000 min  
Response: 2072718769  
Conc: 510.35 ng/ml

Instrument :  
ECD\_S  
ClientSampleId :  
PB164412BS



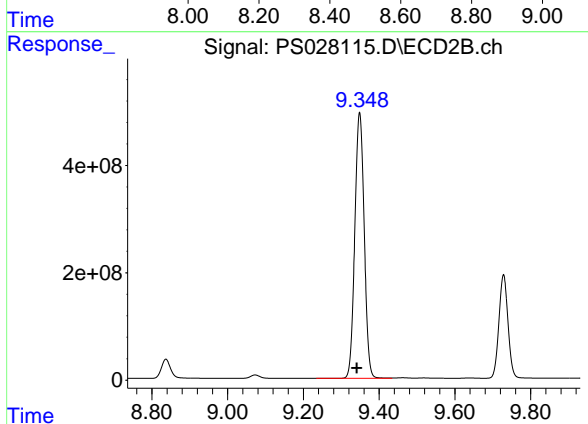
#9 2,4-D

R.T.: 8.837 min  
Delta R.T.: 0.006 min  
Response: 609287833  
Conc: 500.44 ng/ml



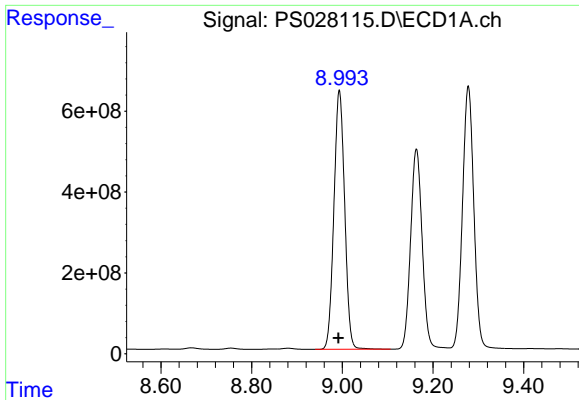
#10 Pentachlorophenol

R.T.: 8.429 min  
Delta R.T.: 0.002 min  
Response: 27438639363  
Conc: 558.08 ng/ml



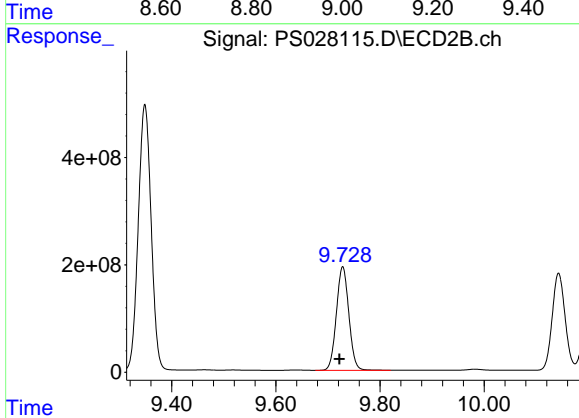
#10 Pentachlorophenol

R.T.: 9.348 min  
Delta R.T.: 0.007 min  
Response: 8505342593  
Conc: 512.61 ng/ml

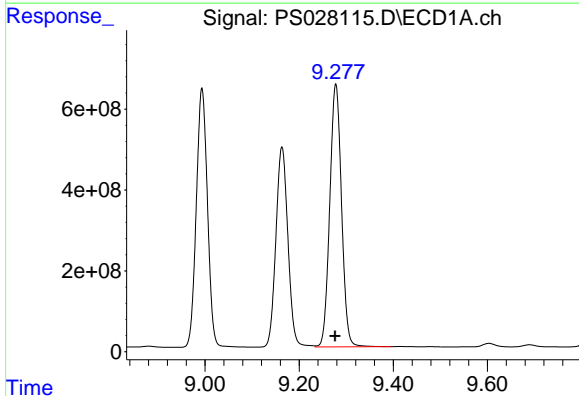


#11 2,4,5-TP (SILVEX)  
 R.T.: 8.994 min  
 Delta R.T.: 0.002 min  
 Response: 10523287741  
 Conc: 516.51 ng/ml

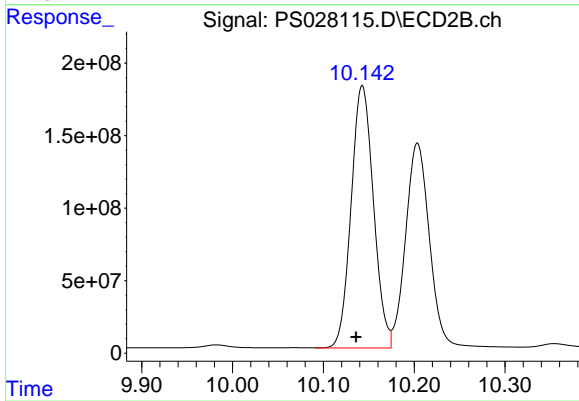
Instrument :  
 ECD\_S  
 ClientSampleId :  
 PB164412BS



#11 2,4,5-TP (SILVEX)  
 R.T.: 9.728 min  
 Delta R.T.: 0.007 min  
 Response: 3210712198  
 Conc: 505.21 ng/ml

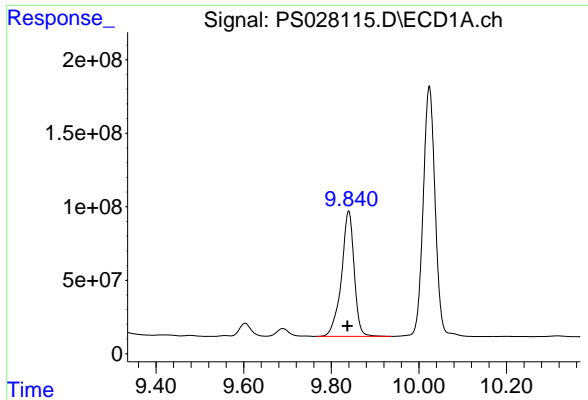


#12 2,4,5-T  
 R.T.: 9.278 min  
 Delta R.T.: 0.002 min  
 Response: 11236889956  
 Conc: 518.37 ng/ml



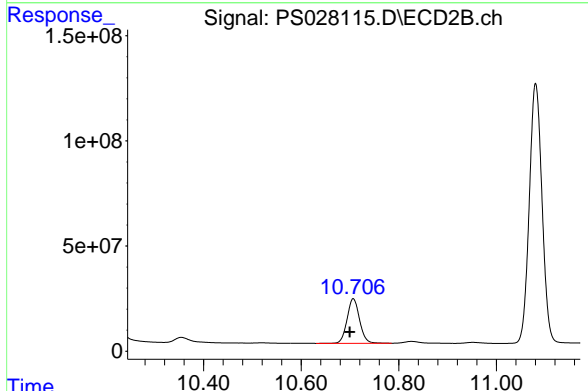
#12 2,4,5-T  
 R.T.: 10.143 min  
 Delta R.T.: 0.007 min  
 Response: 3094348659  
 Conc: 505.52 ng/ml



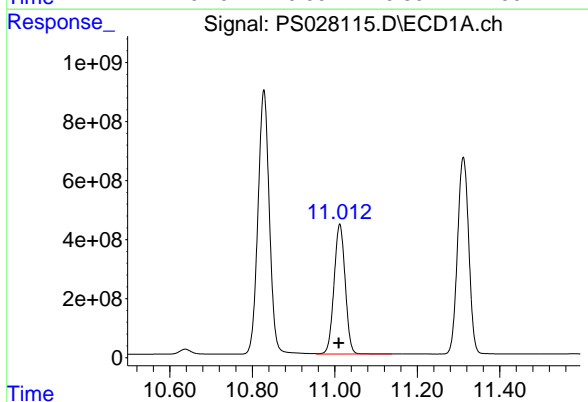


#13 2,4-DB  
 R.T.: 9.840 min  
 Delta R.T.: 0.003 min  
 Response: 1719395634  
 Conc: 505.86 ng/ml

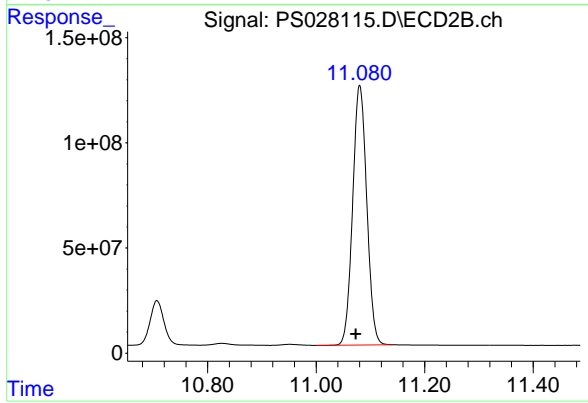
Instrument :  
 ECD\_S  
 ClientSampleId :  
 PB164412BS



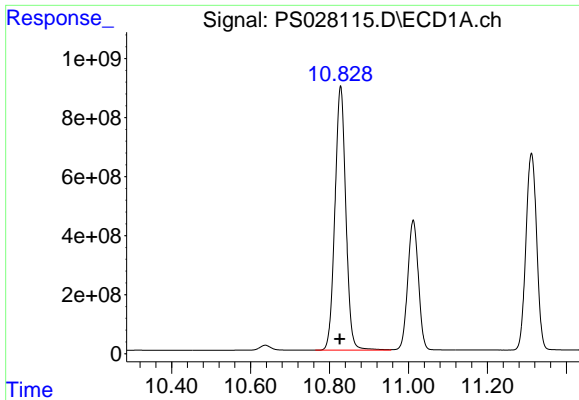
#13 2,4-DB  
 R.T.: 10.707 min  
 Delta R.T.: 0.007 min  
 Response: 375779854  
 Conc: 496.79 ng/ml



#14 DINOSEB  
 R.T.: 11.012 min  
 Delta R.T.: 0.002 min  
 Response: 8234511060  
 Conc: 499.32 ng/ml



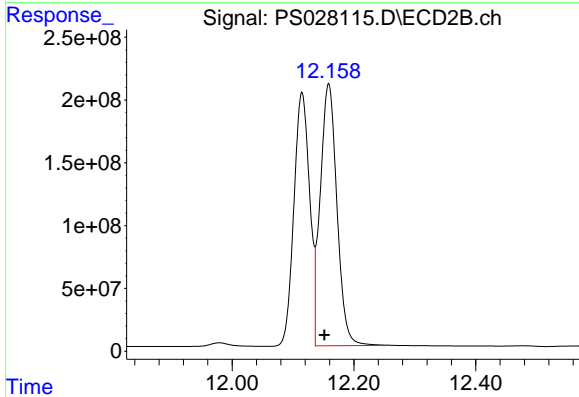
#14 DINOSEB  
 R.T.: 11.080 min  
 Delta R.T.: 0.007 min  
 Response: 2223011089  
 Conc: 490.78 ng/ml



#15 Picloram

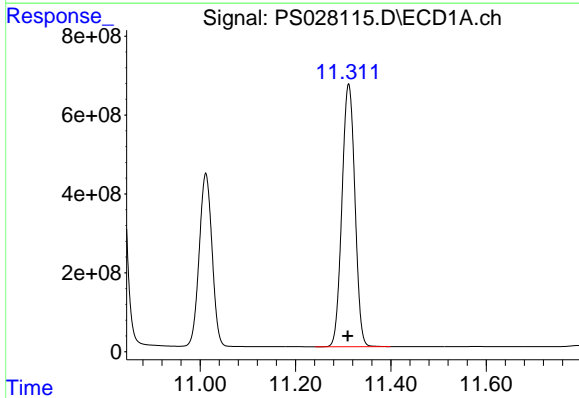
R.T.: 10.828 min  
 Delta R.T.: 0.002 min  
 Response: 17150490253  
 Conc: 497.00 ng/ml

Instrument :  
 ECD\_S  
 ClientSampleId :  
 PB164412BS



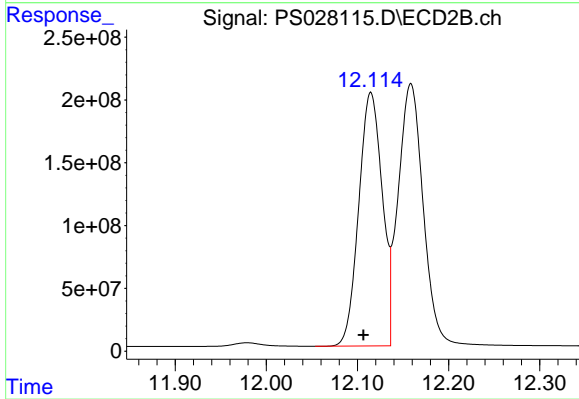
#15 Picloram

R.T.: 12.159 min  
 Delta R.T.: 0.007 min  
 Response: 3971648410  
 Conc: 479.92 ng/ml



#16 DCPA

R.T.: 11.312 min  
 Delta R.T.: 0.002 min  
 Response: 12545257887  
 Conc: 525.42 ng/ml



#16 DCPA

R.T.: 12.115 min  
 Delta R.T.: 0.008 min  
 Response: 3616424863  
 Conc: 513.81 ng/ml