

Data Path : Z:\pestpcbsrv\HPCHEM1\ECD\_S\Data\PS103124\  
 Data File : PS028125.D  
 Signal(s) : Signal #1: ECD1A.ch Signal #2: ECD2B.ch  
 Acq On : 31 Oct 2024 20:29  
 Operator : AR\AJ  
 Sample : P4561-01MSD  
 Misc :  
 ALS Vial : 17 Sample Multiplier: 1

Instrument :  
 ECD\_S  
 ClientSampleId :  
 BP-F-19MSD

Integration File signal 1: autoint1.e  
 Integration File signal 2: autoint2.e  
 Quant Time: Nov 01 02:24:44 2024  
 Quant Method : Z:\pestpcbsrv\HPCHEM1\ECD\_S\Method\PS103124.M  
 Quant Title : 8080.M  
 QLast Update : Thu Oct 31 13:10:03 2024  
 Response via : Initial Calibration  
 Integrator: ChemStation

Volume Inj. : 1 µl  
 Signal #1 Phase : ZB-MR2 Signal #2 Phase: ZB-MR2  
 Signal #1 Info : 30M x 0.32mm x0.5 Signal #2 Info : 30M x 0.32mm x 0.25µm

Compound	RT#1	RT#2	Resp#1	Resp#2	ng/ml	ng/ml
-----						
System Monitoring Compounds						
4) S 2,4-DCAA	7.063	7.604	1841.6E6	433.9E6	588.617	434.305 #
Target Compounds						
1) T Dalapon	2.526	2.592	1056.4E6	1735.9E6	257.264	805.353 #
2) T 3,5-DICHL...	6.262	6.581	1886.3E6	581.1E6	407.251	376.807
3) T 4-Nitroph...	6.859	7.139	889.0E6	236.0E6	377.935	346.455
5) T DICAMBA	7.241	7.798	5081.0E6	1628.7E6	371.207	358.020
6) T MCPP	7.417	7.900	252.9E6	98890985	26.864	31.589
7) T MCPA	7.560	8.139	423.2E6	189.7E6	32.705	41.866 #
8) T DICHLORPROP	7.923	8.503	1252.7E6	411.9E6	368.301	376.663
9) T 2,4-D	8.144	8.828	1771.7E6	521.6E6	436.225	428.441
10) T Pentachlo...	8.429	9.339	17935.3E6	5410.4E6	364.791	326.080
11) T 2,4,5-TP ...	8.994	9.719	7267.9E6	2210.4E6	356.726	347.804
12) T 2,4,5-T	9.278	10.134	7713.2E6	2115.2E6	355.822	345.563
13) T 2,4-DB	9.841	10.696	1330.0E6	250.7E6	391.294	331.368
14) T DINOSEB	11.013	11.072	853.2E6	240.7E6	51.734	53.138
15) T Picloram	10.829	12.147	11865.8E6	2849.5E6	343.858	344.314
16) T DCPA	11.312	12.104	9037.2E6	3116.5E6	378.496	442.781
-----						

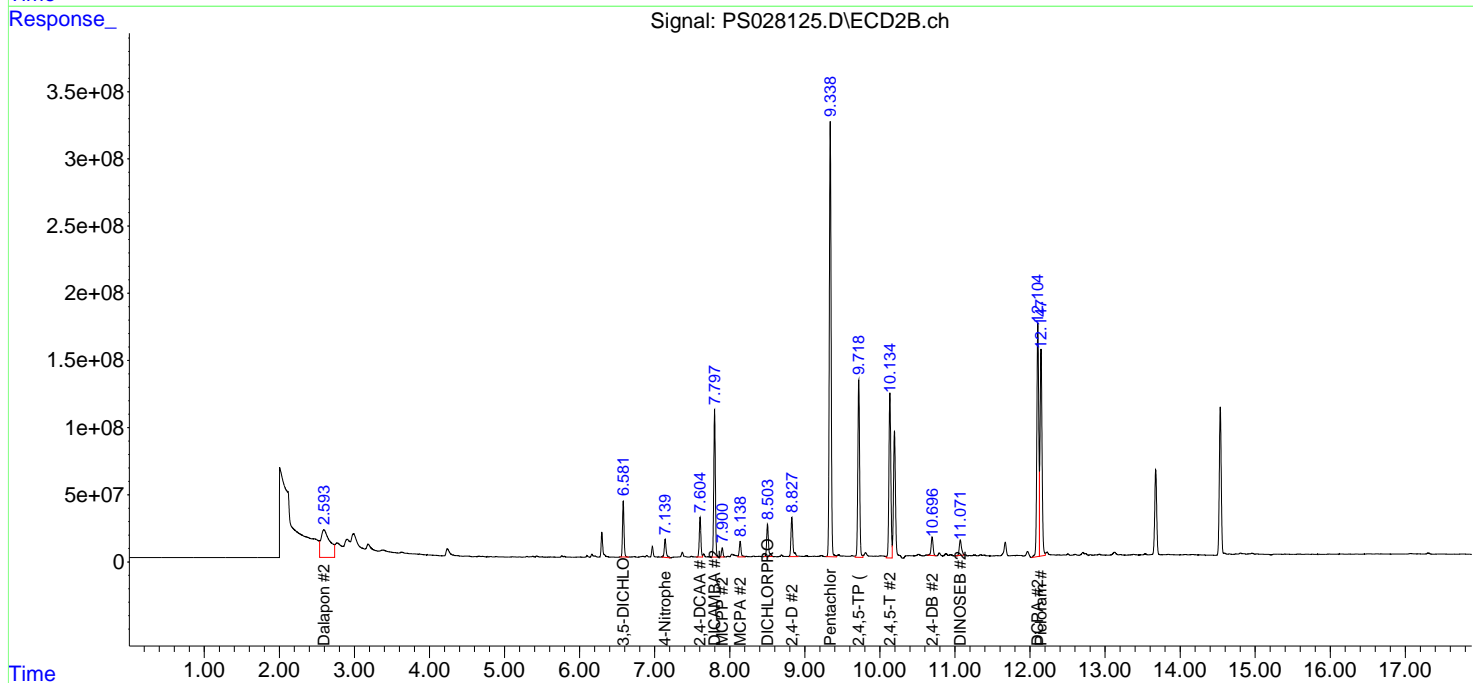
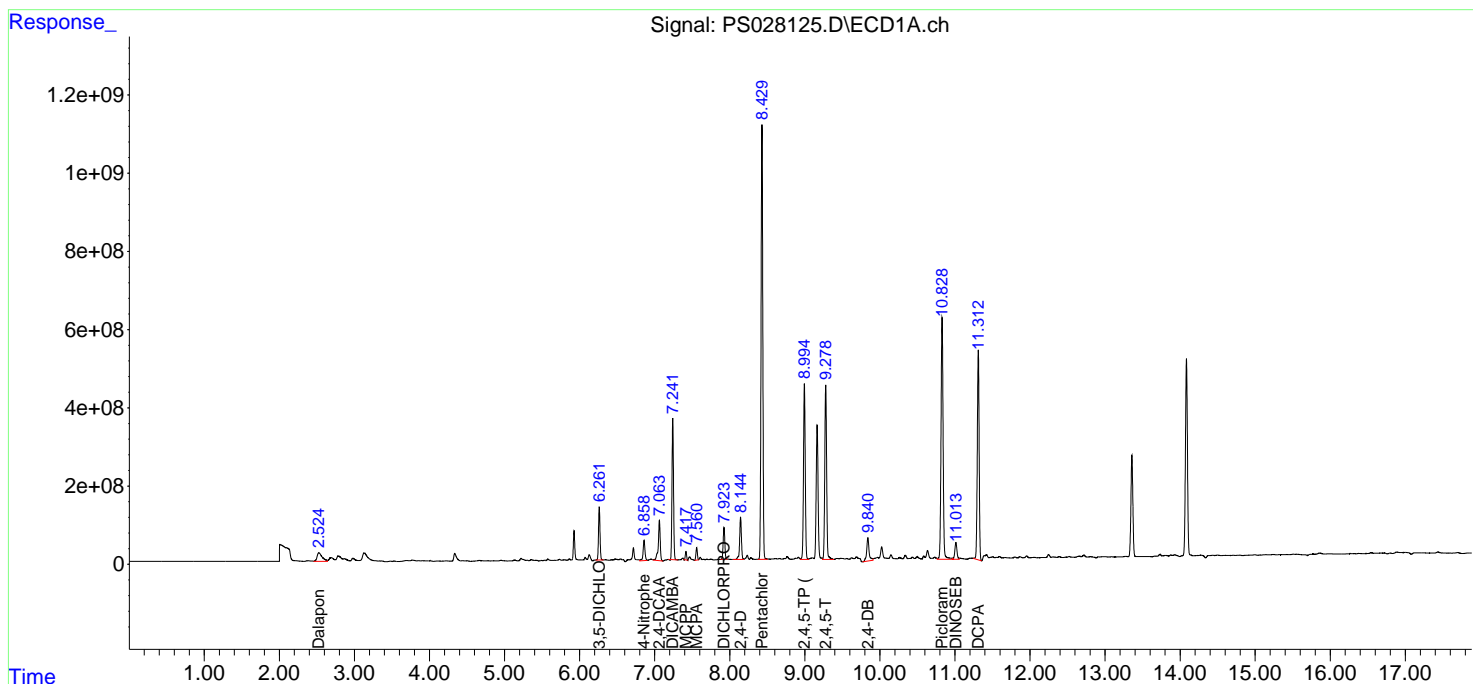
(f)=RT Delta > 1/2 Window (#)=Amounts differ by > 25% (m)=manual int.

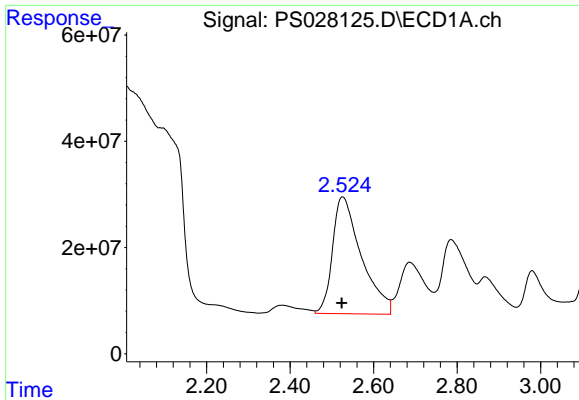
Data Path : Z:\pestpcbsrv\HPCHEM1\ECD\_S\Data\PS103124\  
 Data File : PS028125.D  
 Signal(s) : Signal #1: ECD1A.ch Signal #2: ECD2B.ch  
 Acq On : 31 Oct 2024 20:29  
 Operator : AR\AJ  
 Sample : P4561-01MSD  
 Misc :  
 ALS Vial : 17 Sample Multiplier: 1

Instrument :  
 ECD\_S  
 ClientSampleId :  
 BP-F-19MSD

Integration File signal 1: autoint1.e  
 Integration File signal 2: autoint2.e  
 Quant Time: Nov 01 02:24:44 2024  
 Quant Method : Z:\pestpcbsrv\HPCHEM1\ECD\_S\Method\PS103124.M  
 Quant Title : 8080.M  
 QLast Update : Thu Oct 31 13:10:03 2024  
 Response via : Initial Calibration  
 Integrator: ChemStation

Volume Inj. : 1 µl  
 Signal #1 Phase : ZB-MR1 Signal #2 Phase: ZB-MR2  
 Signal #1 Info : 30M x 0.32mm x0.5 Signal #2 Info : 30M x 0.32mm x 0.25µm

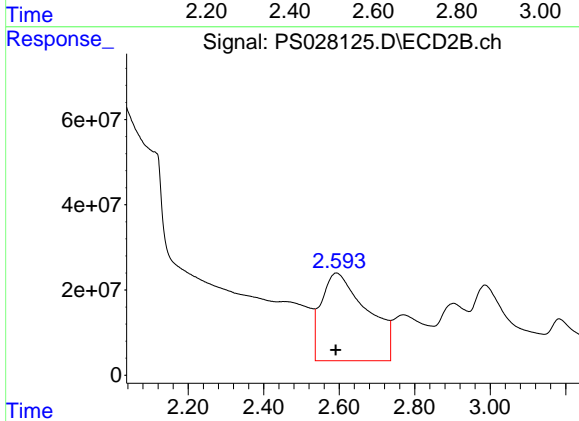




#1 Dalapon

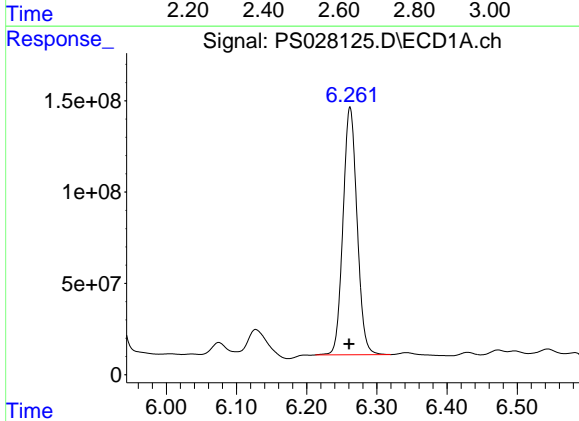
R.T.: 2.526 min  
 Delta R.T.: 0.002 min  
 Response: 1056444440  
 Conc: 257.26 ng/ml

Instrument :  
 ECD\_S  
 ClientSampleId :  
 BP-F-19MSD



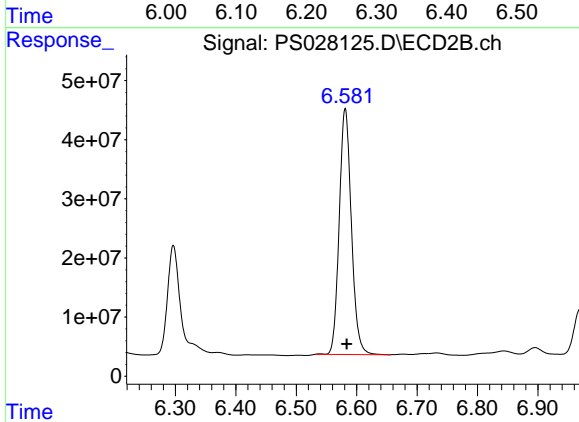
#1 Dalapon

R.T.: 2.592 min  
 Delta R.T.: 0.001 min  
 Response: 1735915947  
 Conc: 805.35 ng/ml



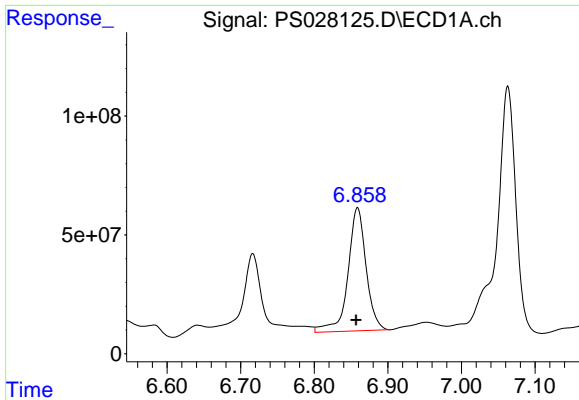
#2 3,5-DICHLOROBENZOIC ACID

R.T.: 6.262 min  
 Delta R.T.: 0.002 min  
 Response: 1886340946  
 Conc: 407.25 ng/ml



#2 3,5-DICHLOROBENZOIC ACID

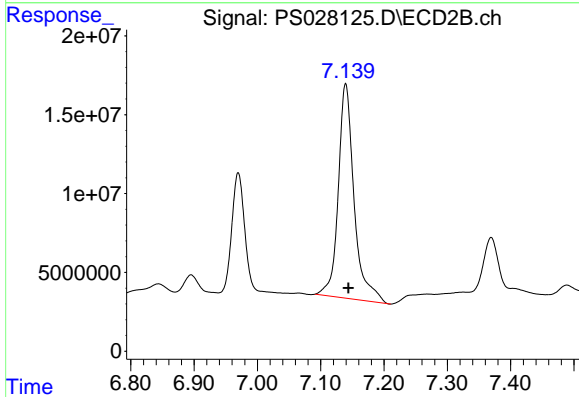
R.T.: 6.581 min  
 Delta R.T.: -0.003 min  
 Response: 581139464  
 Conc: 376.81 ng/ml



#3 4-Nitrophenol

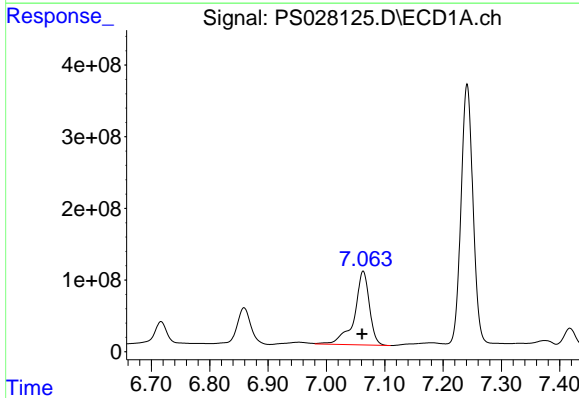
R.T.: 6.859 min  
 Delta R.T.: 0.002 min  
 Response: 888950636  
 Conc: 377.93 ng/ml

Instrument :  
 ECD\_S  
 ClientSampleId :  
 BP-F-19MSD



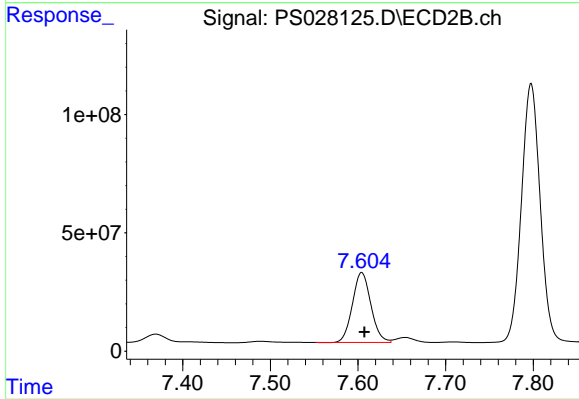
#3 4-Nitrophenol

R.T.: 7.139 min  
 Delta R.T.: -0.004 min  
 Response: 236029169  
 Conc: 346.46 ng/ml



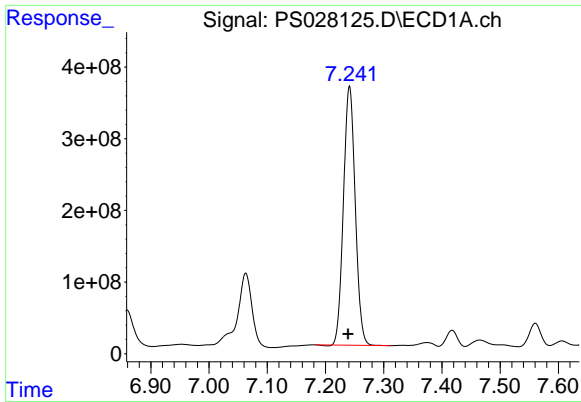
#4 2,4-DCAA

R.T.: 7.063 min  
 Delta R.T.: 0.002 min  
 Response: 1841631699  
 Conc: 588.62 ng/ml



#4 2,4-DCAA

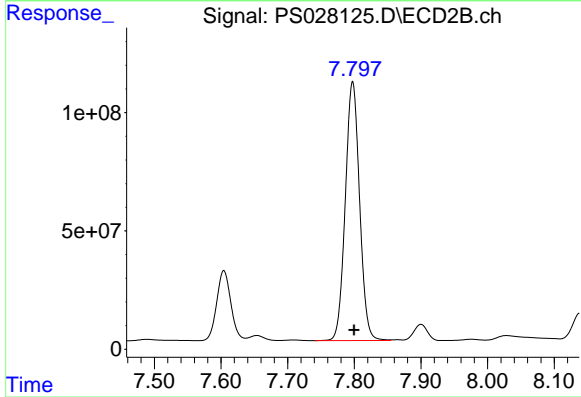
R.T.: 7.604 min  
 Delta R.T.: -0.003 min  
 Response: 433933570  
 Conc: 434.31 ng/ml



#5 DICAMBA

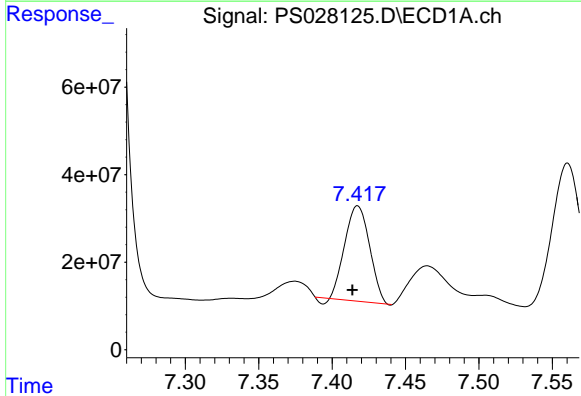
R.T.: 7.241 min  
 Delta R.T.: 0.003 min  
 Response: 5080968690  
 Conc: 371.21 ng/ml

Instrument :  
 ECD\_S  
 ClientSampleId :  
 BP-F-19MSD



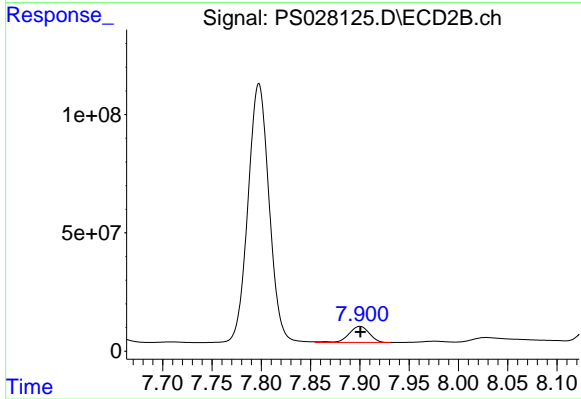
#5 DICAMBA

R.T.: 7.798 min  
 Delta R.T.: -0.002 min  
 Response: 1628651439  
 Conc: 358.02 ng/ml



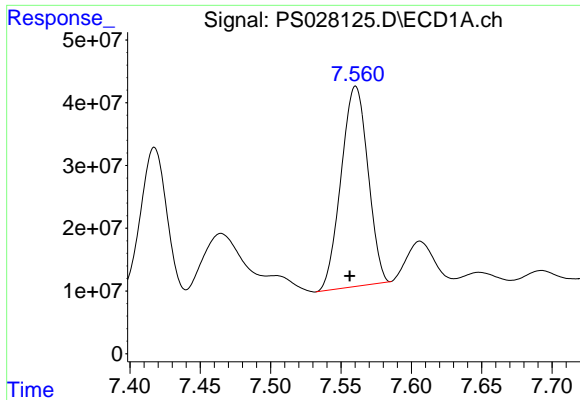
#6 MCP

R.T.: 7.417 min  
 Delta R.T.: 0.004 min  
 Response: 252860421  
 Conc: 26.86 ug/ml



#6 MCP

R.T.: 7.900 min  
 Delta R.T.: 0.000 min  
 Response: 98890985  
 Conc: 31.59 ug/ml

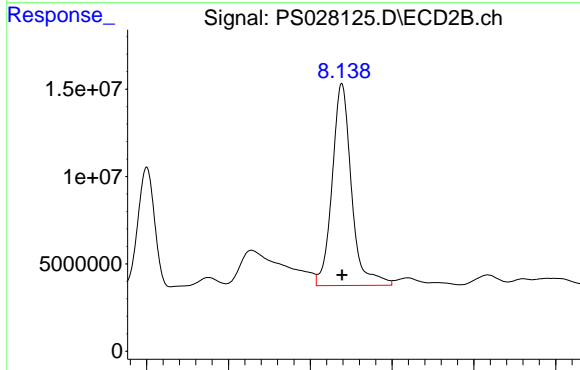


#7 MCPA

R.T.: 7.560 min  
 Delta R.T.: 0.004 min  
 Response: 423161952  
 Conc: 32.71 ug/ml

Instrument :  
 ECD\_S  
 ClientSampleId :  
 BP-F-19MSD

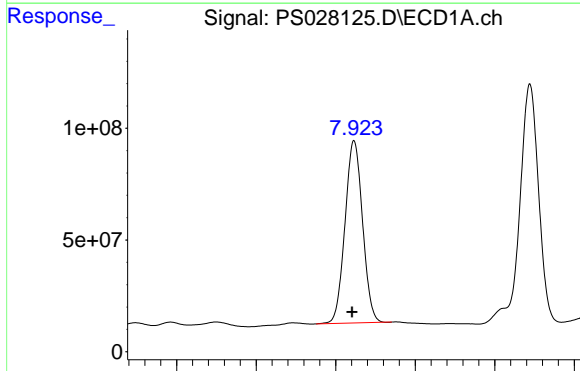
Time 7.40 7.45 7.50 7.55 7.60 7.65 7.70



#7 MCPA

R.T.: 8.139 min  
 Delta R.T.: 0.000 min  
 Response: 189667793  
 Conc: 41.87 ug/ml

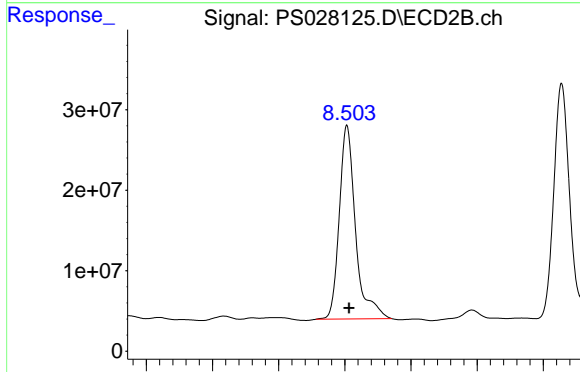
Time 7.90 8.00 8.10 8.20 8.30 8.40



#8 DICHLORPROP

R.T.: 7.923 min  
 Delta R.T.: 0.002 min  
 Response: 1252705300  
 Conc: 368.30 ng/ml

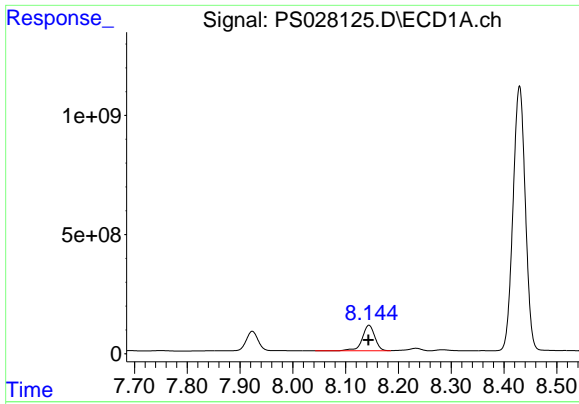
Time 7.70 7.80 7.90 8.00 8.10



#8 DICHLORPROP

R.T.: 8.503 min  
 Delta R.T.: -0.003 min  
 Response: 411908582  
 Conc: 376.66 ng/ml

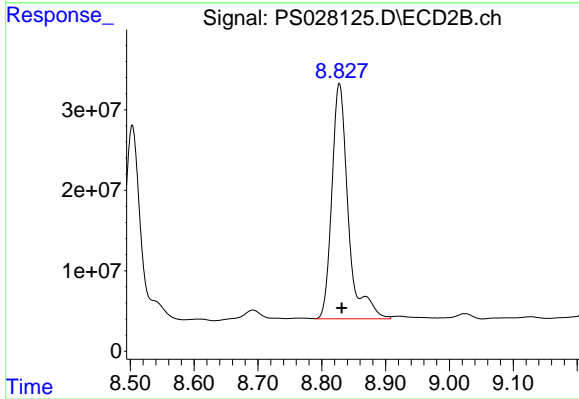
Time 8.20 8.30 8.40 8.50 8.60 8.70 8.80



#9 2,4-D

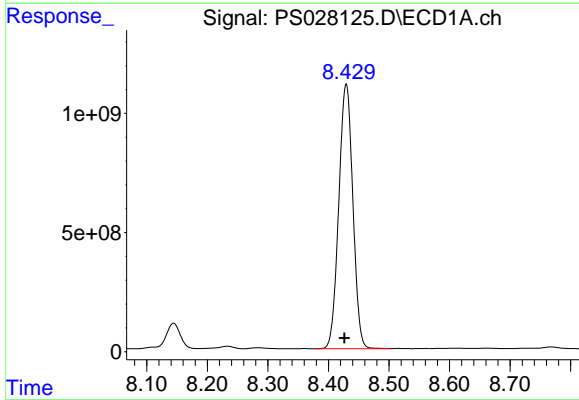
R.T.: 8.144 min  
 Delta R.T.: 0.001 min  
 Response: 1771654360  
 Conc: 436.22 ng/ml

Instrument :  
 ECD\_S  
 ClientSampleId :  
 BP-F-19MSD



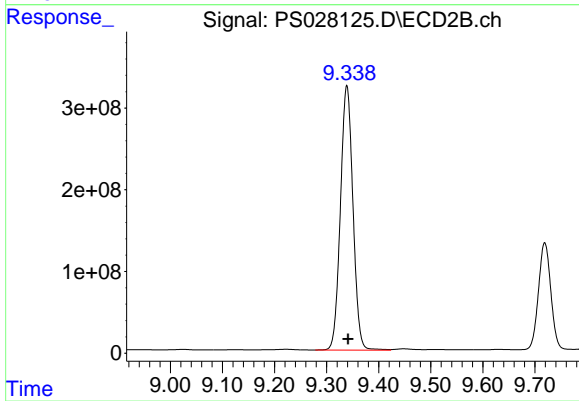
#9 2,4-D

R.T.: 8.828 min  
 Delta R.T.: -0.004 min  
 Response: 521632164  
 Conc: 428.44 ng/ml



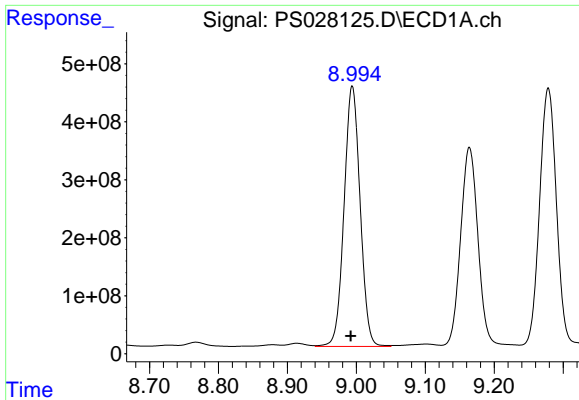
#10 Pentachlorophenol

R.T.: 8.429 min  
 Delta R.T.: 0.003 min  
 Response: 17935308302  
 Conc: 364.79 ng/ml



#10 Pentachlorophenol

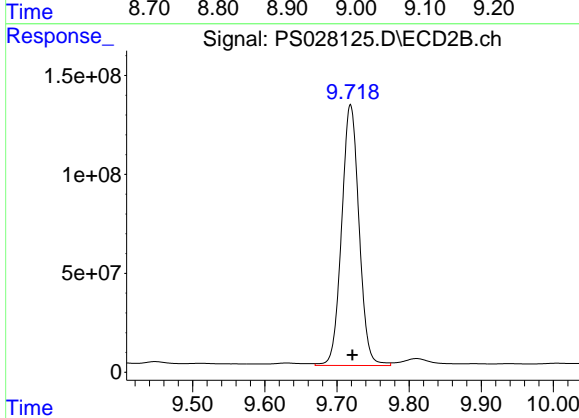
R.T.: 9.339 min  
 Delta R.T.: -0.002 min  
 Response: 5410361702  
 Conc: 326.08 ng/ml



#11 2,4,5-TP (SILVEX)

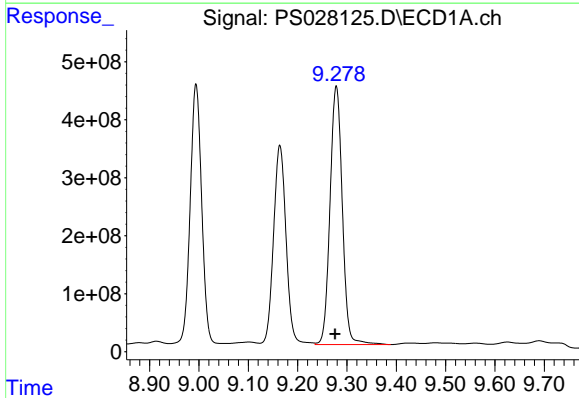
R.T.: 8.994 min  
 Delta R.T.: 0.002 min  
 Response: 7267894501  
 Conc: 356.73 ng/ml

Instrument :  
 ECD\_S  
 ClientSampleId :  
 BP-F-19MSD



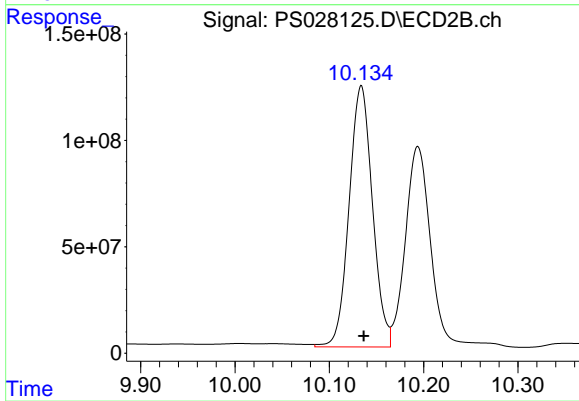
#11 2,4,5-TP (SILVEX)

R.T.: 9.719 min  
 Delta R.T.: -0.003 min  
 Response: 2210355161  
 Conc: 347.80 ng/ml



#12 2,4,5-T

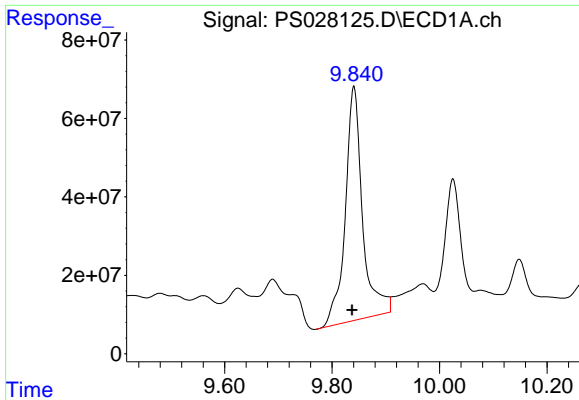
R.T.: 9.278 min  
 Delta R.T.: 0.002 min  
 Response: 7713242884  
 Conc: 355.82 ng/ml



#12 2,4,5-T

R.T.: 10.134 min  
 Delta R.T.: -0.002 min  
 Response: 2115232612  
 Conc: 345.56 ng/ml

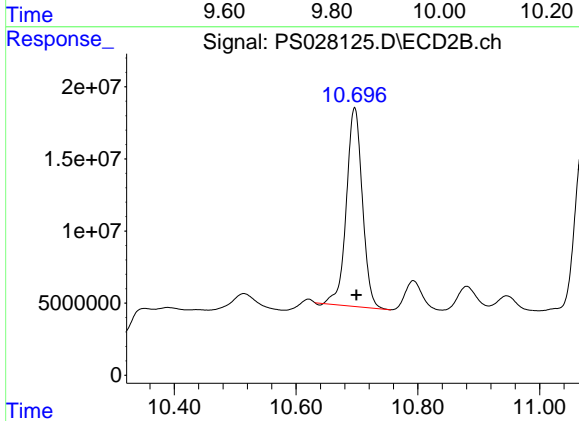




#13 2,4-DB

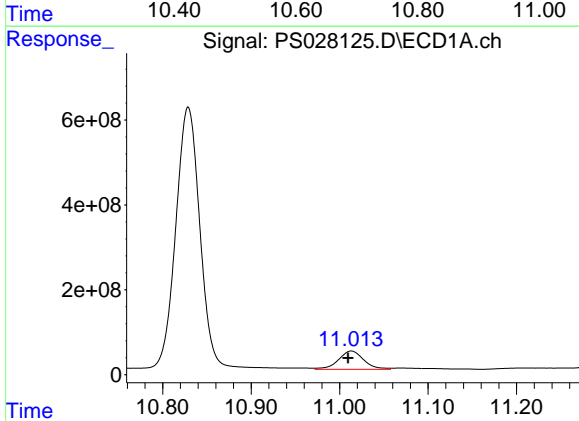
R.T.: 9.841 min  
 Delta R.T.: 0.003 min  
 Response: 1329997154  
 Conc: 391.29 ng/ml

Instrument :  
 ECD\_S  
 ClientSampleId :  
 BP-F-19MSD



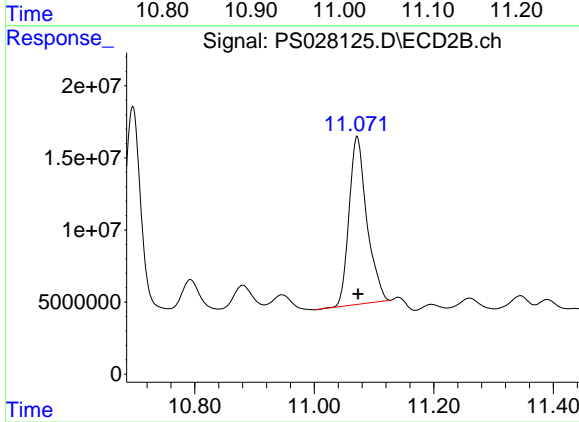
#13 2,4-DB

R.T.: 10.696 min  
 Delta R.T.: -0.003 min  
 Response: 250652998  
 Conc: 331.37 ng/ml



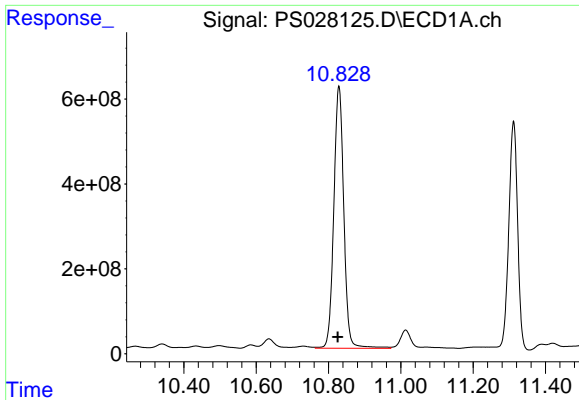
#14 DINOSEB

R.T.: 11.013 min  
 Delta R.T.: 0.003 min  
 Response: 853162889  
 Conc: 51.73 ng/ml



#14 DINOSEB

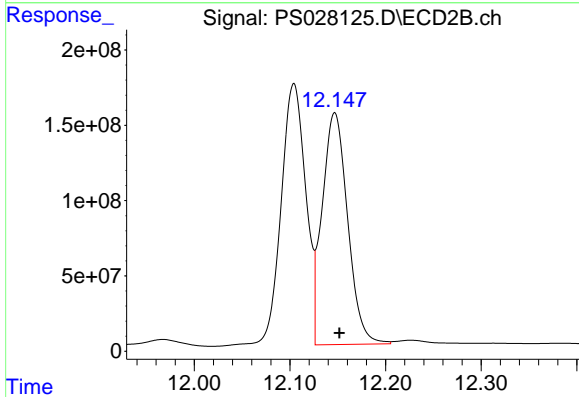
R.T.: 11.072 min  
 Delta R.T.: -0.001 min  
 Response: 240689407  
 Conc: 53.14 ng/ml



#15 Picloram

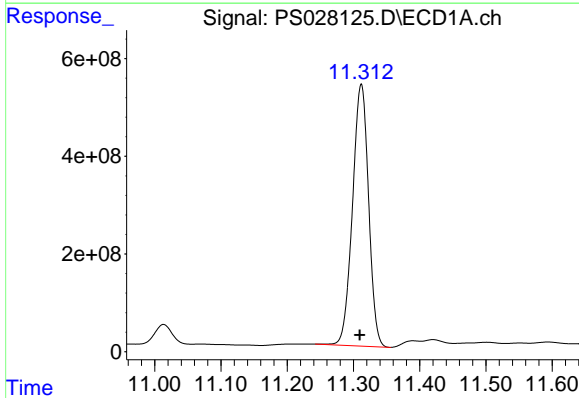
R.T.: 10.829 min  
 Delta R.T.: 0.003 min  
 Response: 11865829072  
 Conc: 343.86 ng/ml

Instrument :  
 ECD\_S  
 ClientSampleId :  
 BP-F-19MSD



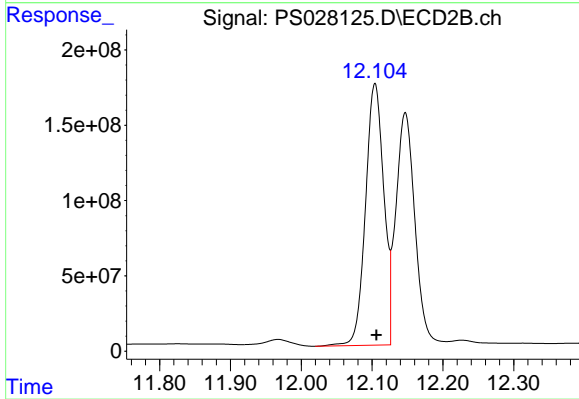
#15 Picloram

R.T.: 12.147 min  
 Delta R.T.: -0.005 min  
 Response: 2849453704  
 Conc: 344.31 ng/ml



#16 DCPA

R.T.: 11.312 min  
 Delta R.T.: 0.002 min  
 Response: 9037212657  
 Conc: 378.50 ng/ml



#16 DCPA

R.T.: 12.104 min  
 Delta R.T.: -0.002 min  
 Response: 3116478985  
 Conc: 442.78 ng/ml