

Data Path : \\74.0.250.170\Terastorage\pestpcbsrv\HPCHEM1\ECD_S\Data\PS110118\
 Data File : PS002242.D
 Signal(s) : Signal #1: ECD1A.ch Signal #2: ECD2B.ch
 Acq On : 01 Nov 2018 17:44
 Operator : EI\SJ
 Sample : I.BLK
 Misc :
 ALS Vial : 2 Sample Multiplier: 1

Instrument :
 ECD_S
 ClientSampleId :
 I.BLK

Integration File signal 1: autoint1.e
 Integration File signal 2: autoint2.e
 Quant Time: Nov 02 03:50:24 2018
 Quant Method : Z:\pestpcbsrv\HPCHEM1\ECD_S\Method\PS102618.M
 Quant Title : 8080.M
 QLast Update : Sat Oct 27 01:34:10 2018
 Response via : Initial Calibration
 Integrator: ChemStation

Volume Inj. : 2 µl
 Signal #1 Phase : Rtx-CLPesticides Signal #2 Phase: Rtx-CLPesticides2
 Signal #1 Info : 30M x 0.32mm x0.5 Signal #2 Info : 30M x 0.32mm x 0.25µm

Compound	RT#1	RT#2	Resp#1	Resp#2	ng/ml	ng/ml
----------	------	------	--------	--------	-------	-------

 System Monitoring Compounds

4) S	2,4-DCAA	11.438	10.929	155.8E6	145.1E6	495.170	404.037
------	----------	--------	--------	---------	---------	---------	---------

Target Compounds

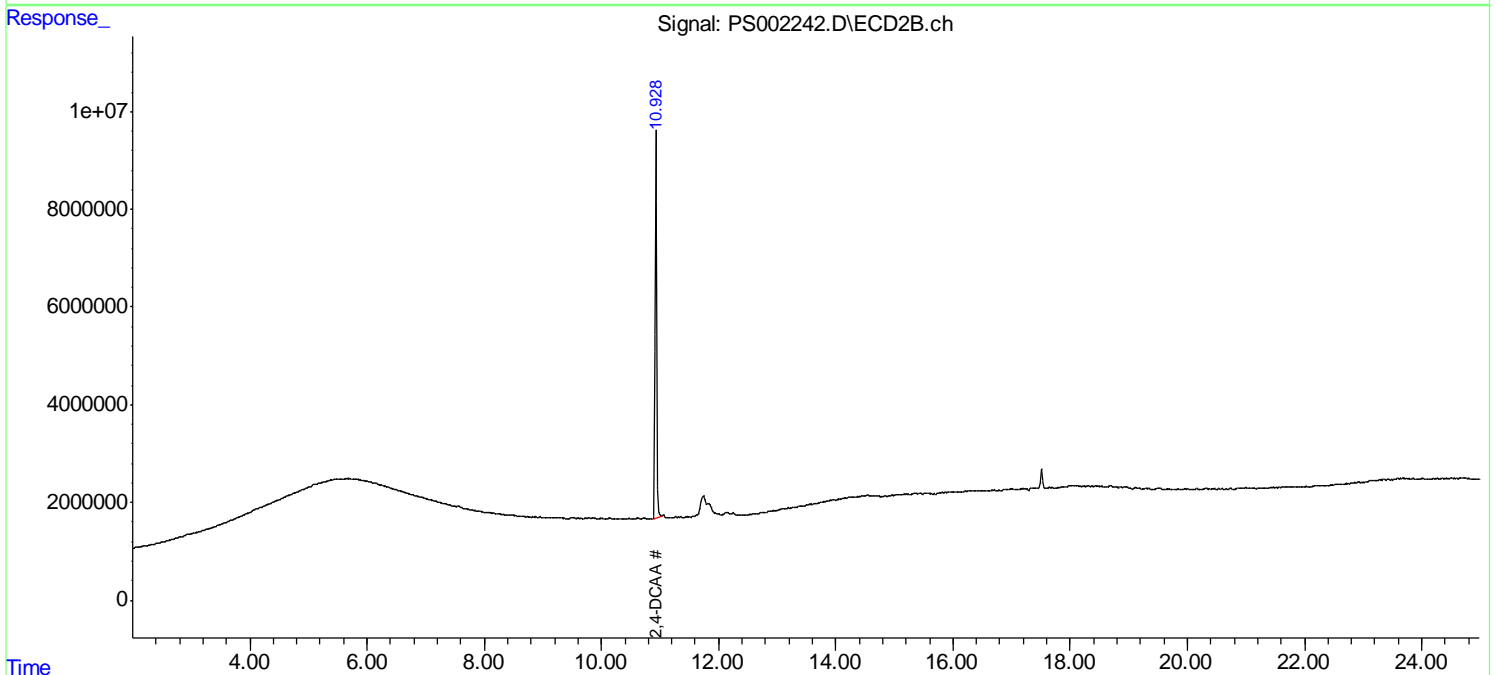
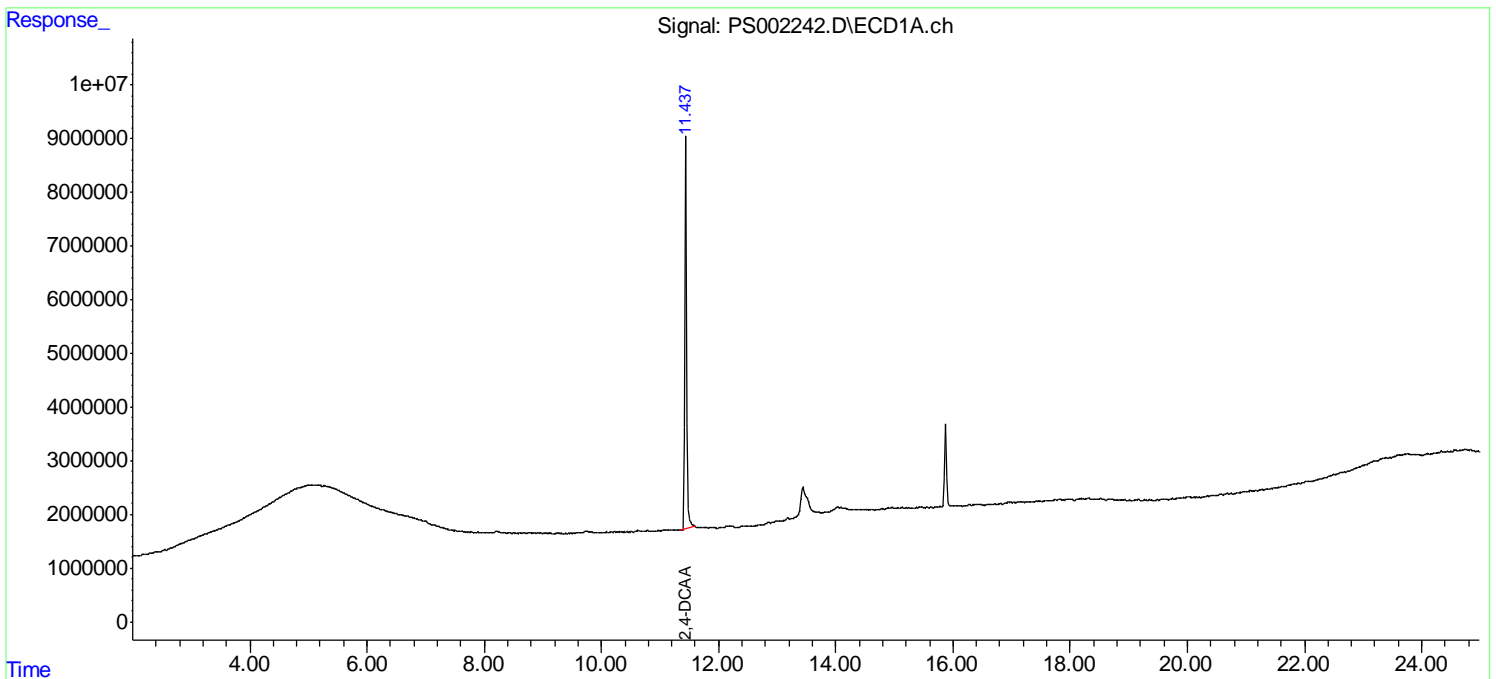
(f)=RT Delta > 1/2 Window (#)=Amounts differ by > 25% (m)=manual int.

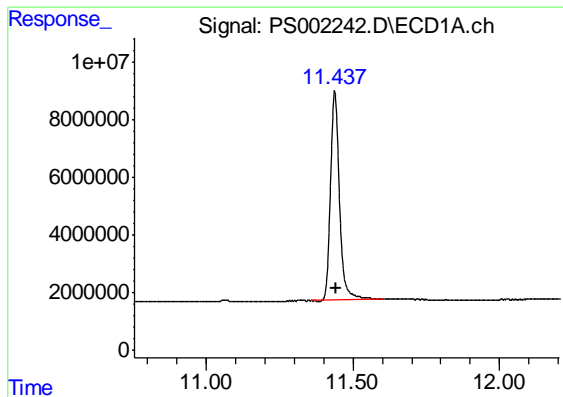
Data Path : \\74.0.250.170\Terastorage\pestpcbsrv\HPCHEM1\ECD_S\Data\PS110118\
 Data File : PS002242.D
 Signal(s) : Signal #1: ECD1A.ch Signal #2: ECD2B.ch
 Acq On : 01 Nov 2018 17:44
 Operator : EI\SJ
 Sample : I.BLK
 Misc :
 ALS Vial : 2 Sample Multiplier: 1

Instrument :
 ECD_S
 ClientSampleId :
 I.BLK

Integration File signal 1: autoint1.e
 Integration File signal 2: autoint2.e
 Quant Time: Nov 02 03:50:24 2018
 Quant Method : Z:\pestpcbsrv\HPCHEM1\ECD_S\Method\PS102618.M
 Quant Title : 8080.M
 QLast Update : Sat Oct 27 01:34:10 2018
 Response via : Initial Calibration
 Integrator: ChemStation

Volume Inj. : 2 µl
 Signal #1 Phase : Rtx-CLPesticides Signal #2 Phase: Rtx-CLPesticides2
 Signal #1 Info : 30M x 0.32mm x0.5 Signal #2 Info : 30M x 0.32mm x 0.25µm

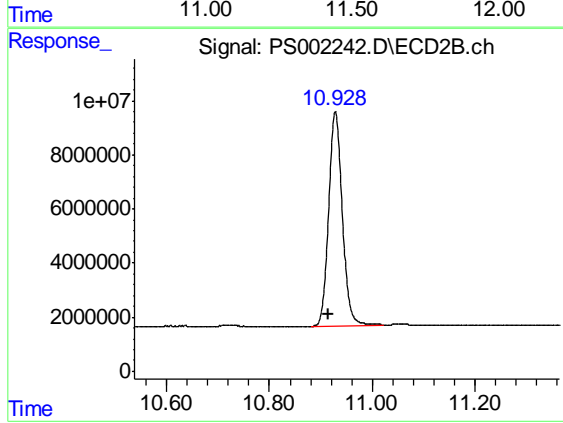




#4 2,4-DCAA

R.T.: 11.438 min
Delta R.T.: -0.003 min
Response: 155822763
Conc: 495.17 ng/ml

Instrument :
ECD_S
ClientSampleId :
I.BLK



#4 2,4-DCAA

R.T.: 10.929 min
Delta R.T.: 0.014 min
Response: 145088920
Conc: 404.04 ng/ml