

Data Path : Z:\pestpcbsrv\HPCHEM1\ECD_S\Data\PS110119\
 Data File : PS007555.D
 Signal(s) : Signal #1: ECD1A.ch Signal #2: ECD2B.ch
 Acq On : 01 Nov 2019 10:28
 Operator : SM\AJ
 Sample : K5541-17
 Misc :
 ALS Vial : 6 Sample Multiplier: 1

Instrument :
 ECD_S
 ClientSampleId :
 18-48-(0-2.5)

Integration File signal 1: autoint1.e
 Integration File signal 2: autoint2.e
 Quant Time: Nov 01 12:44:11 2019
 Quant Method : Z:\pestpcbsrv\HPCHEM1\ECD_S\Method\PS101419.M
 Quant Title : 8080.M
 QLast Update : Mon Oct 14 13:54:23 2019
 Response via : Initial Calibration
 Integrator: ChemStation

Volume Inj. : 2 µl
 Signal #1 Phase : Rtx-CLPesticides Signal #2 Phase: Rtx-CLPesticides2
 Signal #1 Info : 30M x 0.32mm x0.5 Signal #2 Info : 30M x 0.32mm x 0.25µm

Compound	RT#1	RT#2	Resp#1	Resp#2	ng/ml	ng/ml

System Monitoring Compounds						
4) S 2,4-DCAA	5.428	5.154	281.4E6	143.1E6	205.567	203.432
Target Compounds						
1) T Dalapon	1.990	0.000	48717634	0	29.115	N.D. #
2) T 3,5-DICHL...	0.000	4.489	0	95861390	N.D.	111.411
3) T 4-Nitroph...	5.293	4.829	44912532	23290881	74.795	58.980
5) T DICAMBA	5.524	5.288	91977747	6557857	18.720	2.520 #
6) T MCPP	0.000	5.321	0	2754716	N.D.	1.452
7) T MCPA	5.900	5.524	55595114	34334166	10.779	11.810
8) T DICHLORPROP	0.000	5.805	0	4102582	N.D.	6.300
9) T 2,4-D	6.488	6.057	63010441	17110233	51.131	21.447 #
10) T Pentachlo...	6.663	6.444	49248296	10783522	2.759	1.121 #
11) T 2,4,5-TP ...	7.154	0.000	40942741	0	5.874	N.D. #
12) T 2,4,5-T	0.000	7.149	0	40987381	N.D.	11.699
13) T 2,4-DB	8.055	7.672	119.3E6	18882939	125.171	40.288 #
14) T DINOSEB	0.000	7.975	0	93242476	N.D.	33.214
15) T Picloram	0.000	8.889	0	16626644	N.D.	2.708
16) T DCPA	0.000	8.889	0	16626644	N.D.	3.316

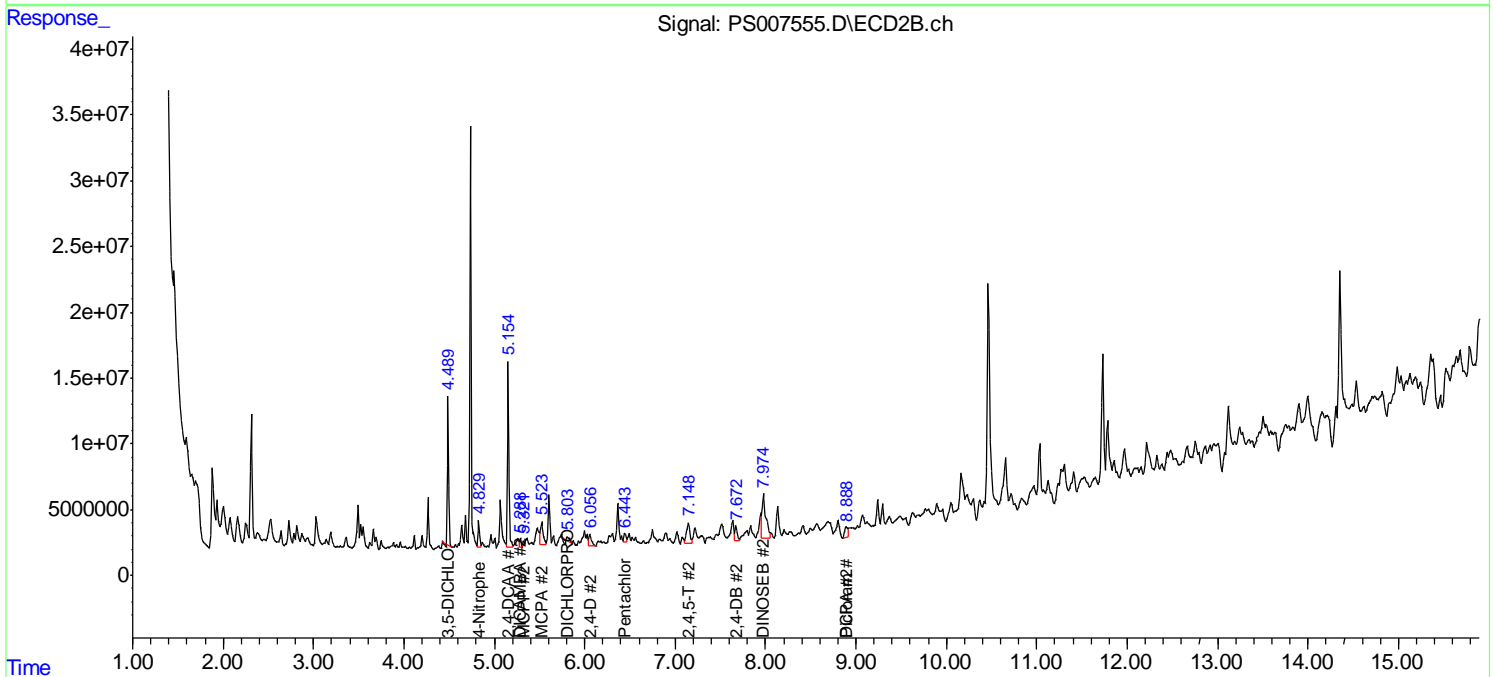
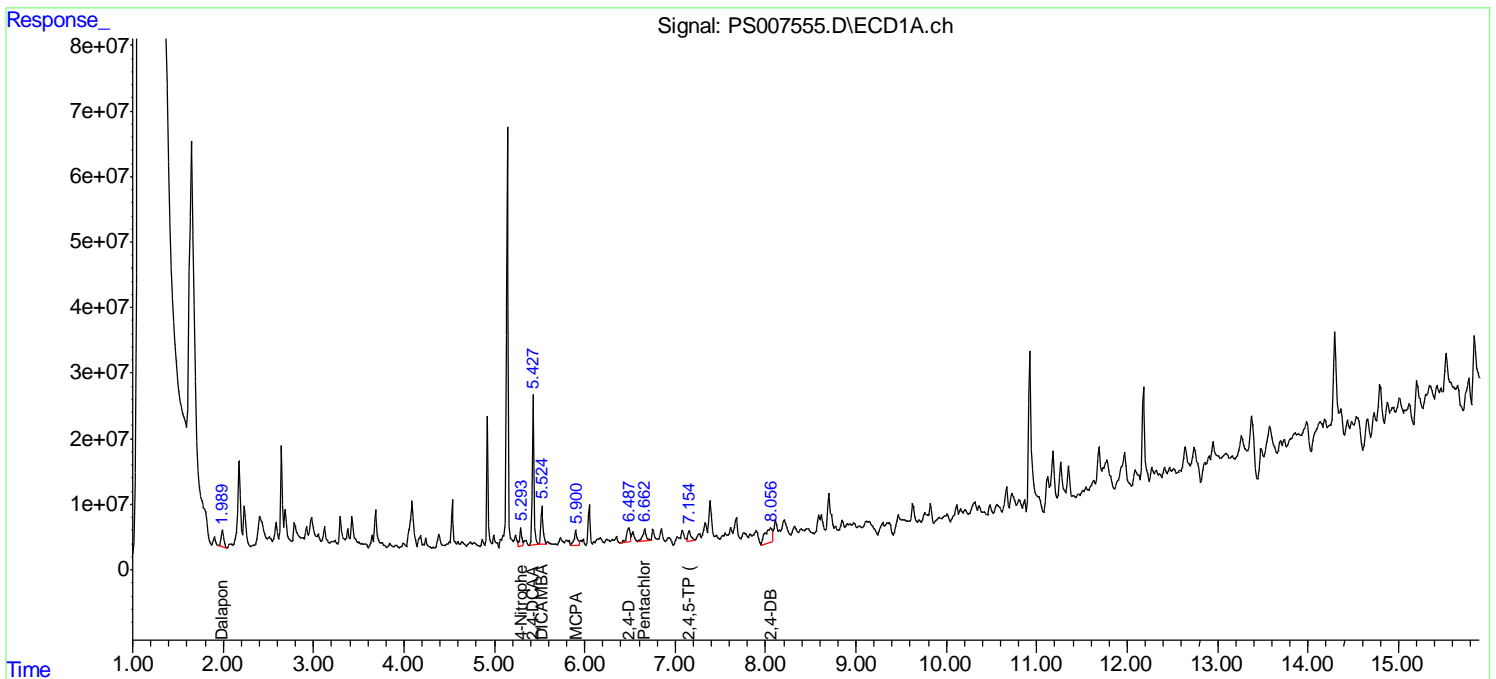
(f)=RT Delta > 1/2 Window (#)=Amounts differ by > 25% (m)=manual int.

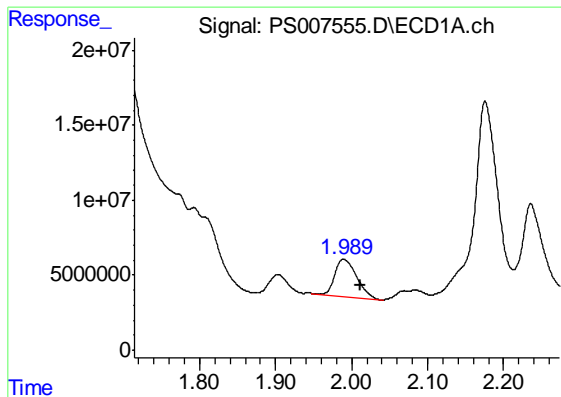
Data Path : Z:\pestpcbsrv\HPCHEM1\ECD_S\Data\PS110119\
 Data File : PS007555.D
 Signal(s) : Signal #1: ECD1A.ch Signal #2: ECD2B.ch
 Acq On : 01 Nov 2019 10:28
 Operator : SM\AJ
 Sample : K5541-17
 Misc :
 ALS Vial : 6 Sample Multiplier: 1

Instrument :
 ECD_S
 ClientSampled :
 18-48-(0-2.5)

Integration File signal 1: autoint1.e
 Integration File signal 2: autoint2.e
 Quant Time: Nov 01 12:44:11 2019
 Quant Method : Z:\pestpcbsrv\HPCHEM1\ECD_S\Method\PS101419.M
 Quant Title : 8080.M
 QLast Update : Mon Oct 14 13:54:23 2019
 Response via : Initial Calibration
 Integrator: ChemStation

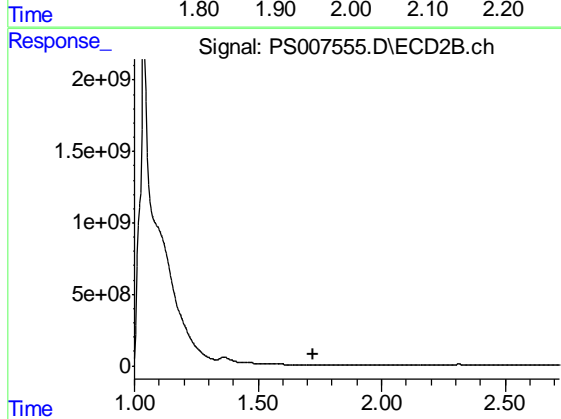
Volume Inj. : 2 µl
 Signal #1 Phase : Rtx-CLPesticides Signal #2 Phase: Rtx-CLPesticides2
 Signal #1 Info : 30M x 0.32mm x0.5 Signal #2 Info : 30M x 0.32mm x 0.25µm



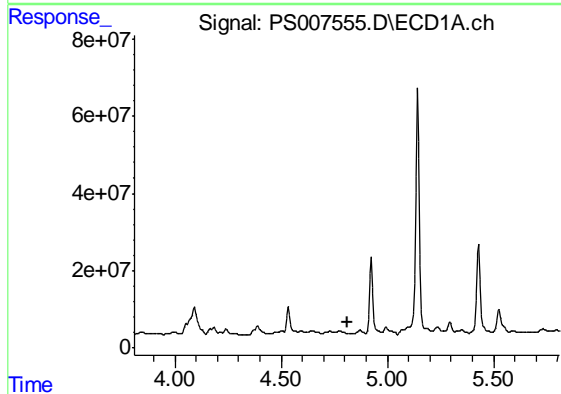


#1 Dalapon
 R.T.: 1.990 min
 Delta R.T.: -0.021 min
 Response: 48717634
 Conc: 29.12 ng/ml

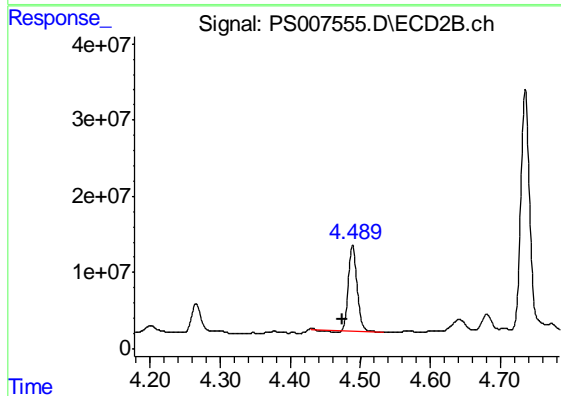
Instrument :
 ECD_S
 ClientSampleId :
 18-48-(0-2.5)



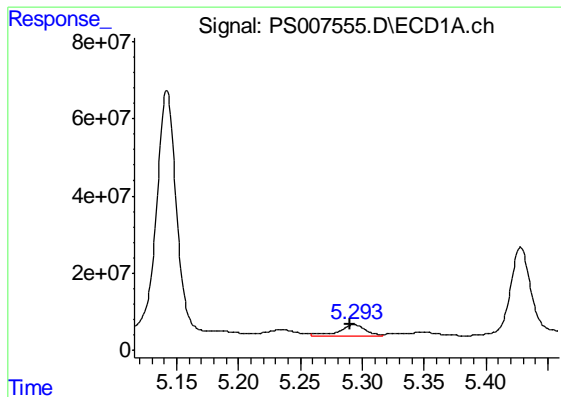
#1 Dalapon
 R.T.: 0.000 min
 Exp R.T. : 1.721 min
 Response: 0
 Conc: N.D.



#2 3,5-DICHLOROBENZOIC ACID
 R.T.: 0.000 min
 Exp R.T. : 4.810 min
 Response: 0
 Conc: N.D.

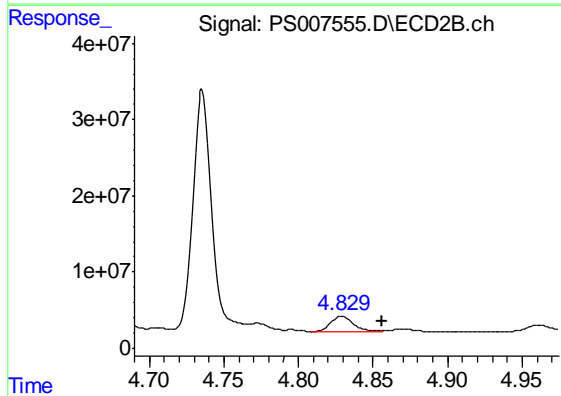


#2 3,5-DICHLOROBENZOIC ACID
 R.T.: 4.489 min
 Delta R.T.: 0.014 min
 Response: 95861390
 Conc: 111.41 ng/ml

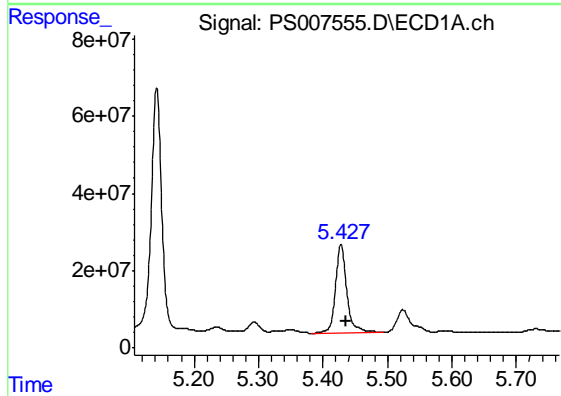


#3 4-Nitrophenol
 R.T.: 5.293 min
 Delta R.T.: 0.004 min
 Response: 44912532
 Conc: 74.80 ng/ml

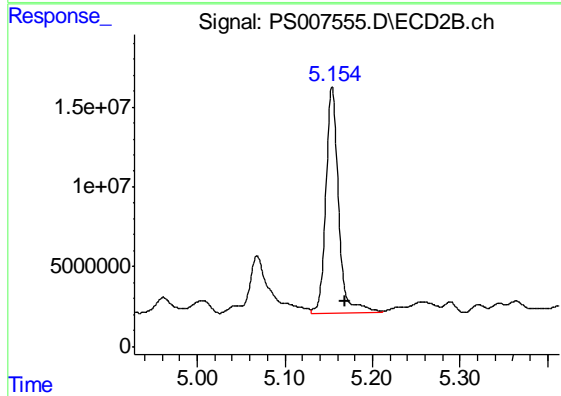
Instrument :
 ECD_S
 ClientSampled :
 18-48-(0-2.5)



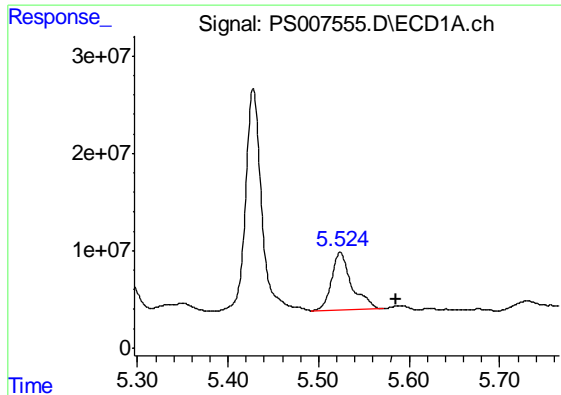
#3 4-Nitrophenol
 R.T.: 4.829 min
 Delta R.T.: -0.027 min
 Response: 23290881
 Conc: 58.98 ng/ml



#4 2,4-DCAA
 R.T.: 5.428 min
 Delta R.T.: -0.008 min
 Response: 281352475
 Conc: 205.57 ng/ml

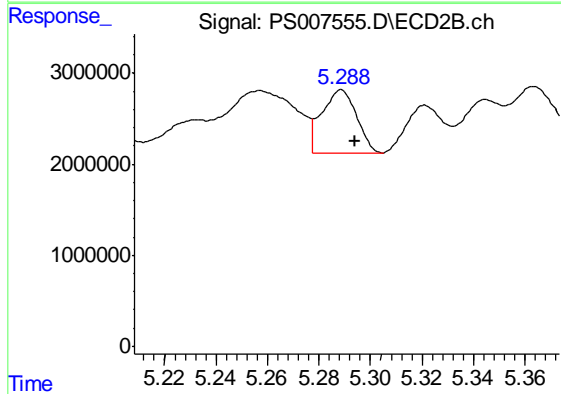


#4 2,4-DCAA
 R.T.: 5.154 min
 Delta R.T.: -0.014 min
 Response: 143075270
 Conc: 203.43 ng/ml

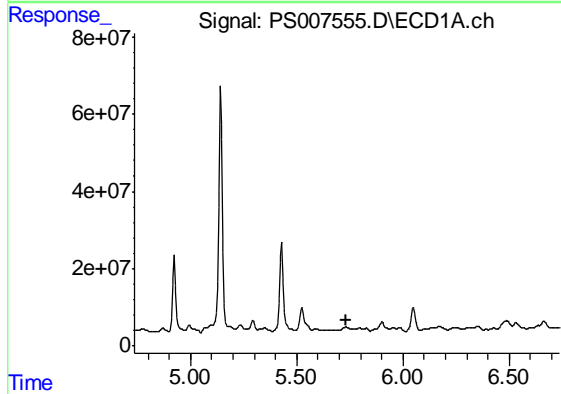


#5 DICAMBA
 R.T.: 5.524 min
 Delta R.T.: -0.061 min
 Response: 91977747
 Conc: 18.72 ng/ml

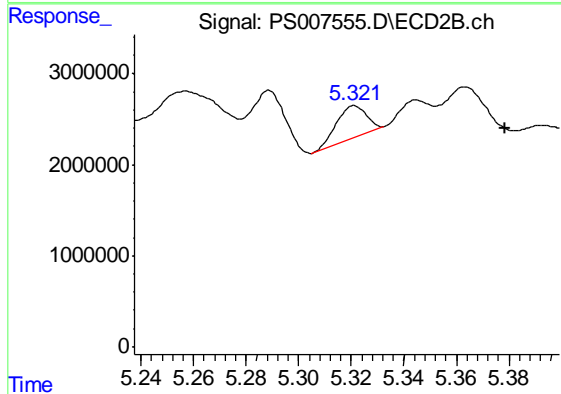
Instrument :
 ECD_S
 ClientSampleId :
 18-48-(0-2.5)



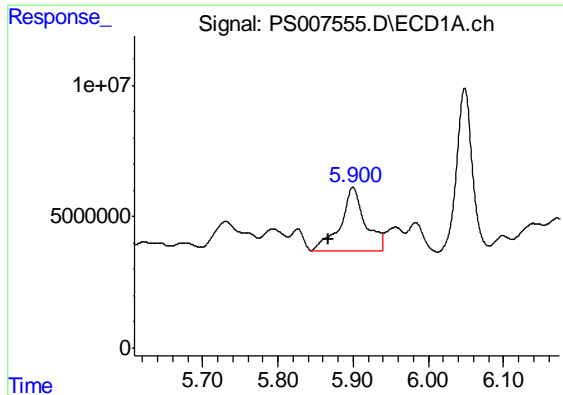
#5 DICAMBA
 R.T.: 5.288 min
 Delta R.T.: -0.006 min
 Response: 6557857
 Conc: 2.52 ng/ml



#6 MCPP
 R.T.: 0.000 min
 Exp R.T. : 5.736 min
 Response: 0
 Conc: N.D.



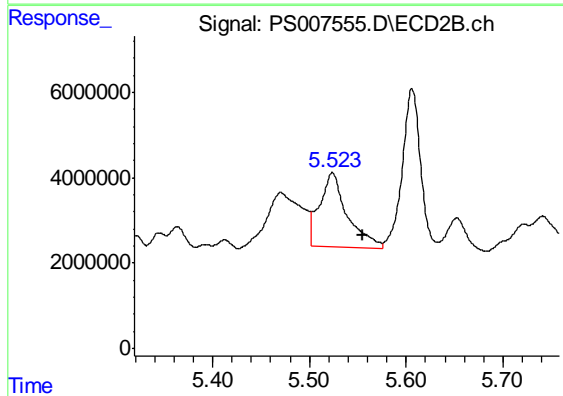
#6 MCPP
 R.T.: 5.321 min
 Delta R.T.: -0.057 min
 Response: 2754716
 Conc: 1.45 ug/ml



#7 MCPA

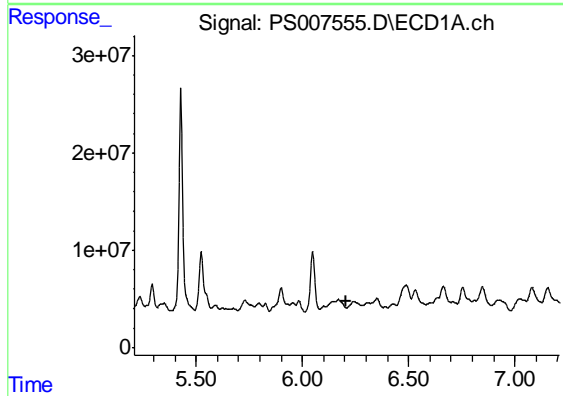
R.T.: 5.900 min
 Delta R.T.: 0.032 min
 Response: 55595114
 Conc: 10.78 ug/ml

Instrument :
 ECD_S
 ClientSampled :
 18-48-(0-2.5)



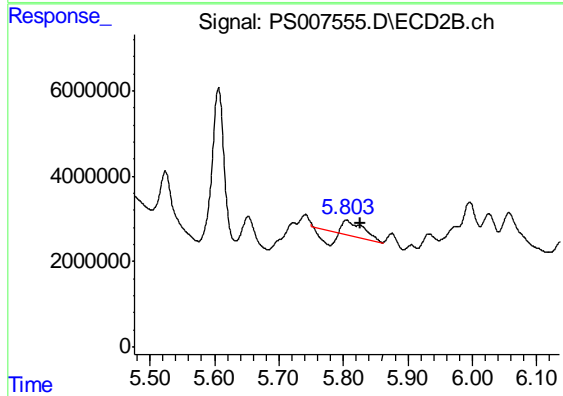
#7 MCPA

R.T.: 5.524 min
 Delta R.T.: -0.031 min
 Response: 34334166
 Conc: 11.81 ug/ml



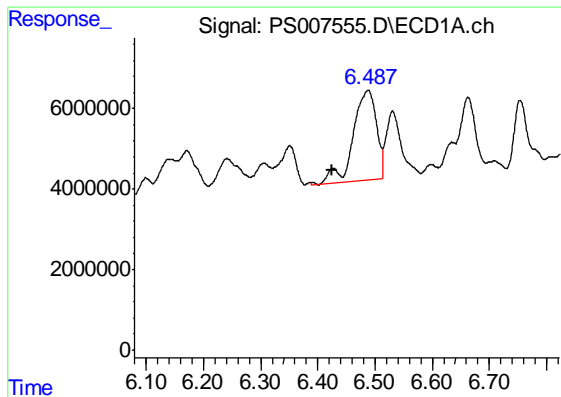
#8 DICHLORPROP

R.T.: 0.000 min
 Exp R.T. : 6.209 min
 Response: 0
 Conc: N.D.



#8 DICHLORPROP

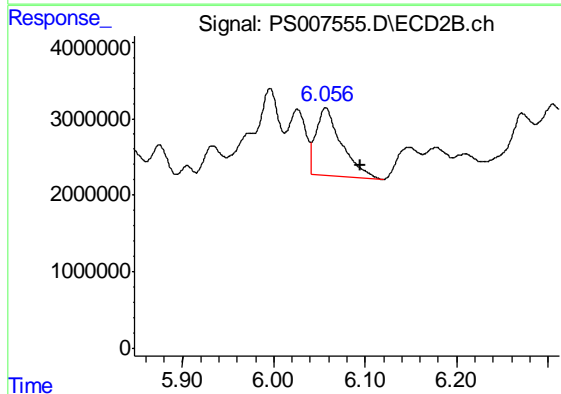
R.T.: 5.805 min
 Delta R.T.: -0.021 min
 Response: 4102582
 Conc: 6.30 ng/ml



#9 2,4-D

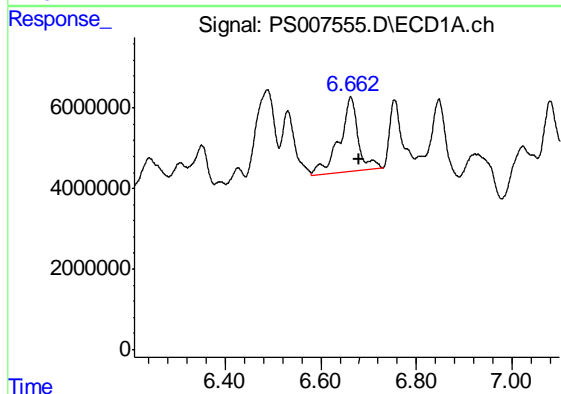
R.T.: 6.488 min
 Delta R.T.: 0.064 min
 Response: 63010441
 Conc: 51.13 ng/ml

Instrument :
 ECD_S
 ClientSampleId :
 18-48-(0-2.5)



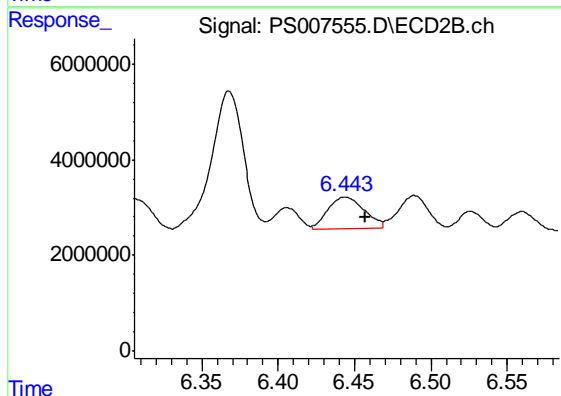
#9 2,4-D

R.T.: 6.057 min
 Delta R.T.: -0.039 min
 Response: 17110233
 Conc: 21.45 ng/ml



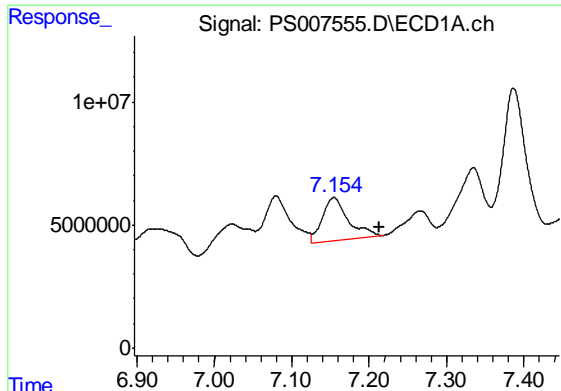
#10 Pentachlorophenol

R.T.: 6.663 min
 Delta R.T.: -0.017 min
 Response: 49248296
 Conc: 2.76 ng/ml



#10 Pentachlorophenol

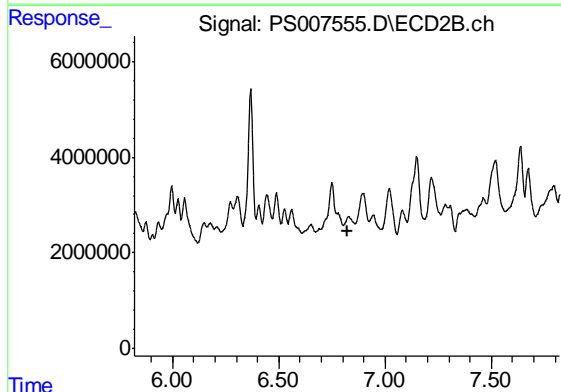
R.T.: 6.444 min
 Delta R.T.: -0.013 min
 Response: 10783522
 Conc: 1.12 ng/ml



#11 2,4,5-TP (SILVEX)

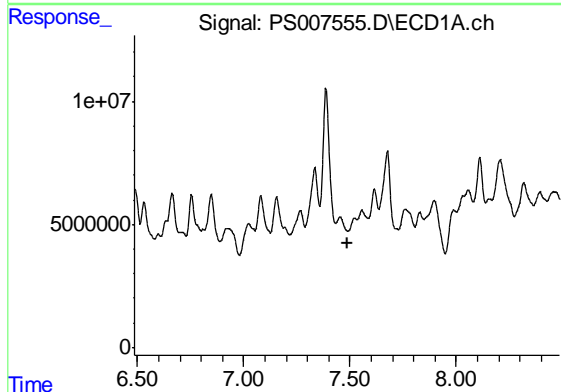
R.T.: 7.154 min
 Delta R.T.: -0.060 min
 Response: 40942741
 Conc: 5.87 ng/ml

Instrument :
 ECD_S
 ClientSampleId :
 18-48-(0-2.5)



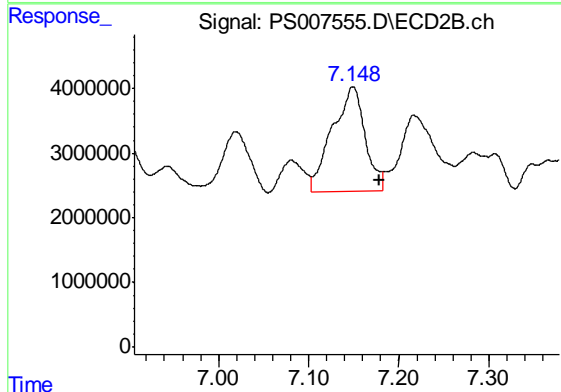
#11 2,4,5-TP (SILVEX)

R.T.: 0.000 min
 Exp R.T. : 6.821 min
 Response: 0
 Conc: N.D.



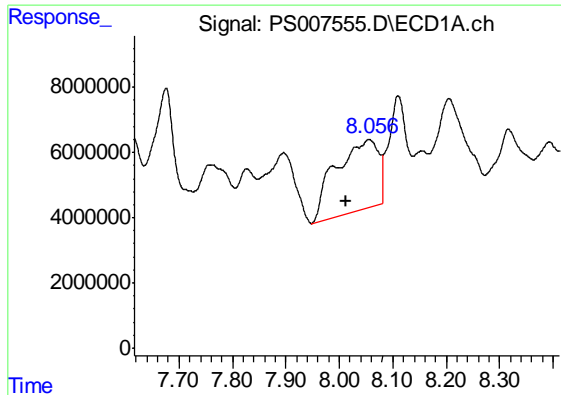
#12 2,4,5-T

R.T.: 0.000 min
 Exp R.T. : 7.486 min
 Response: 0
 Conc: N.D.



#12 2,4,5-T

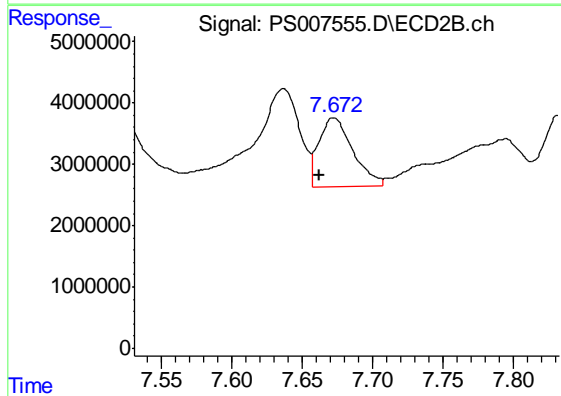
R.T.: 7.149 min
 Delta R.T.: -0.029 min
 Response: 40987381
 Conc: 11.70 ng/ml



#13 2,4-DB

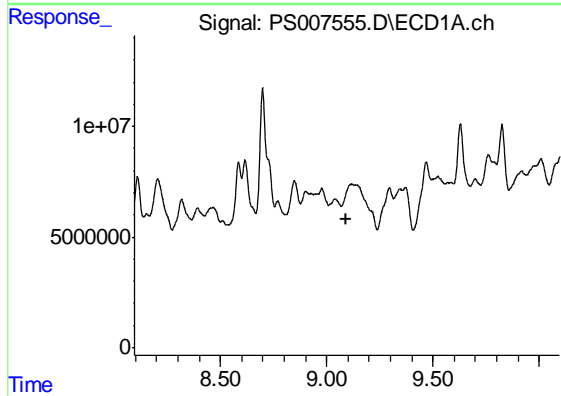
R.T.: 8.055 min
 Delta R.T.: 0.042 min
 Response: 119346017
 Conc: 125.17 ng/ml

Instrument :
 ECD_S
 ClientSampleId :
 18-48-(0-2.5)



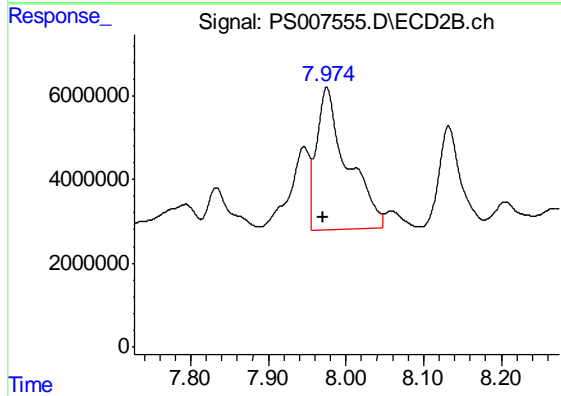
#13 2,4-DB

R.T.: 7.672 min
 Delta R.T.: 0.010 min
 Response: 18882939
 Conc: 40.29 ng/ml



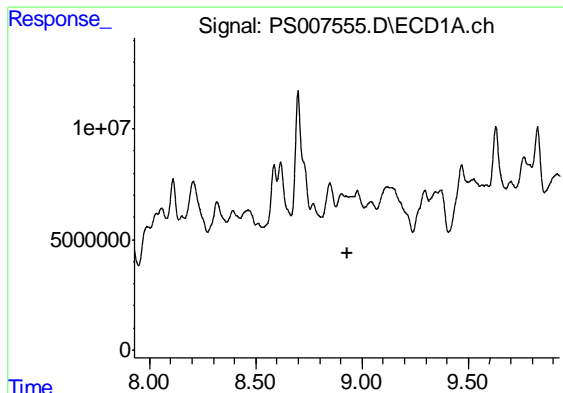
#14 DINOSEB

R.T.: 0.000 min
 Exp R.T. : 9.095 min
 Response: 0
 Conc: N.D.



#14 DINOSEB

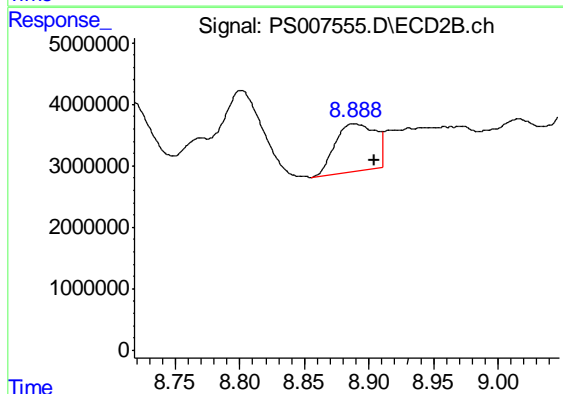
R.T.: 7.975 min
 Delta R.T.: 0.004 min
 Response: 93242476
 Conc: 33.21 ng/ml



#15 Picloram

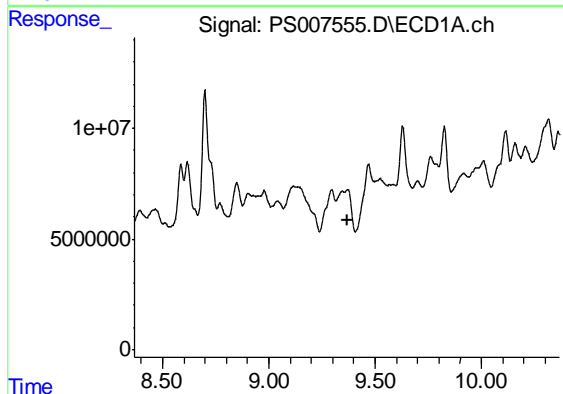
R.T.: 0.000 min
 Exp R.T. : 8.929 min
 Response: 0
 Conc: N.D.

Instrument :
 ECD_S
 ClientSampled :
 18-48-(0-2.5)



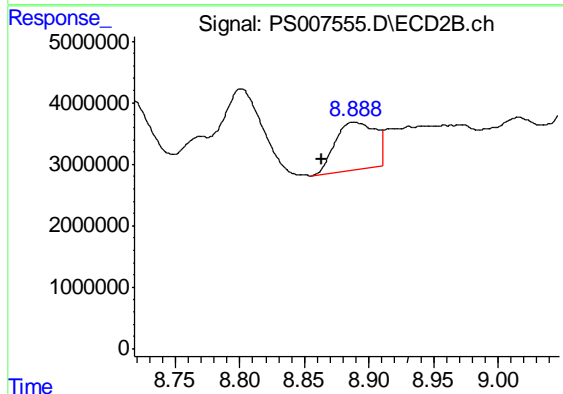
#15 Picloram

R.T.: 8.889 min
 Delta R.T.: -0.016 min
 Response: 16626644
 Conc: 2.71 ng/ml



#16 DCPA

R.T.: 0.000 min
 Exp R.T. : 9.367 min
 Response: 0
 Conc: N.D.



#16 DCPA

R.T.: 8.889 min
 Delta R.T.: 0.025 min
 Response: 16626644
 Conc: 3.32 ng/ml