

Data Path : Z:\pestpcbsrv\HPCHEM1\ECD\_S\Data\PS110221\  
 Data File : PS017321.D  
 Signal(s) : Signal #1: ECD1A.ch Signal #2: ECD2B.ch  
 Acq On : 02 Nov 2021 23:34  
 Operator : DD\AJ  
 Sample : HSTDCCC750  
 Misc :  
 ALS Vial : 3 Sample Multiplier: 1

Instrument :  
 ECD\_S  
 ClientSampleId :

Integration File signal 1: autoint1.e  
 Integration File signal 2: autoint2.e  
 Quant Time: Nov 03 02:43:41 2021  
 Quant Method : Z:\pestpcbsrv\HPCHEM1\ECD\_S\Method\PS101821.M  
 Quant Title : 8080.M  
 QLast Update : Tue Oct 19 01:21:46 2021  
 Response via : Initial Calibration  
 Integrator: ChemStation

Volume Inj. : 2 µl  
 Signal #1 Phase : Rtx-CLPesticides Signal #2 Phase: Rtx-CLPesticides2  
 Signal #1 Info : 30M x 0.32mm x0.5 Signal #2 Info : 30M x 0.32mm x 0.25µm

	Compound	RT#1	RT#2	Resp#1	Resp#2	ng/ml	ng/ml
-----							
System Monitoring Compounds							
4) S	2,4-DCAA	7.150	6.738	1166.6E6	446.2E6	763.254	763.440
Target Compounds							
1) T	Dalapon	2.988	2.492	1598.0E6	482.7E6	735.932	745.993
2) T	3,5-DICHL...	6.374	5.936	1498.5E6	626.1E6	694.171	720.901
3) T	4-Nitroph...	6.980	6.363	557.7E6	219.4E6	639.464	680.587
5) T	DICAMBA	0.000	6.898	0	1869.2E6	N.D.	734.138
6) T	MCP P	7.508	6.995	324.8E6	149.9E6	72.665	74.447
7) T	MCPA	7.656	7.206	453.0E6	209.0E6	73.421	70.614
8) T	DICHLORPROP	8.029	7.515	1064.9E6	470.2E6	710.207	731.174
9) T	2,4-D	8.258	7.806	1277.2E6	550.9E6	721.095	731.961
10) T	Pentachlo...	8.563	8.229	14997.4E6	6060.1E6	722.835	742.230
11) T	2,4,5-TP ...	9.112	8.590	5892.5E6	2576.5E6	724.542	747.427
12) T	2,4,5-T	9.397	8.966	5985.8E6	2402.2E6	745.237	757.921
13) T	2,4-DB	9.946	9.471	1162.7E6	301.3E6	772.895	726.513
14) T	DINOSEB	11.097	9.796	4414.3E6	1778.1E6	779.249	805.814
15) T	Picloram	10.920	10.774	8409.9E6	3068.1E6	787.339	801.133
16) T	DCPA	11.365	10.725	7606.5E6	3202.5E6	746.892	750.485

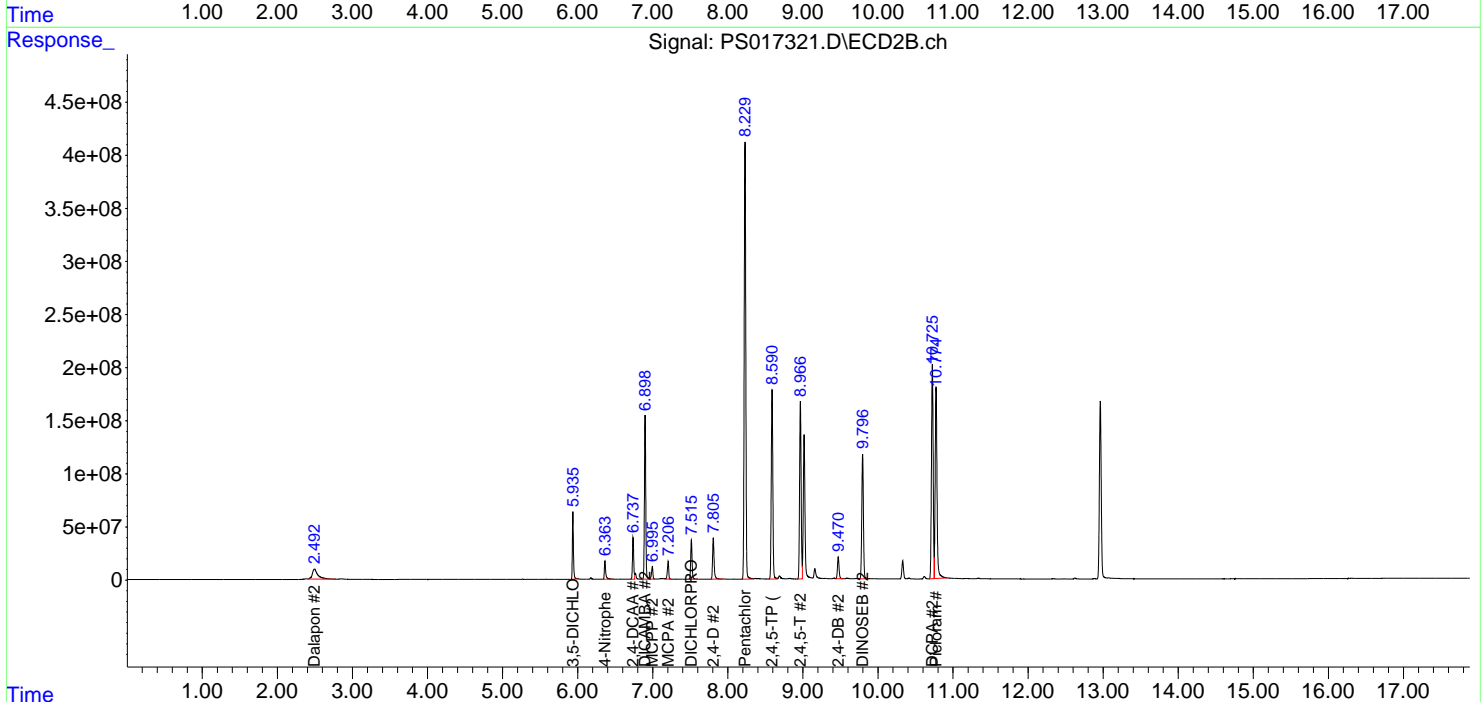
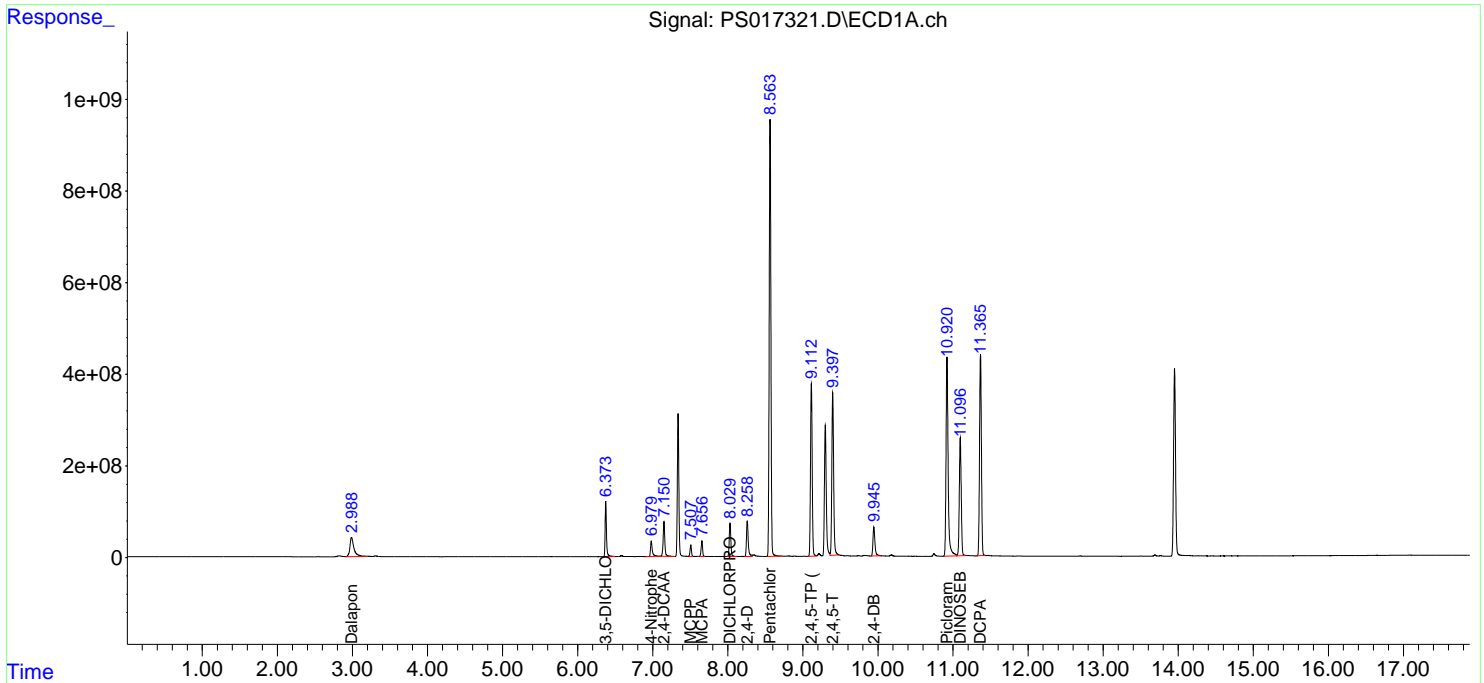
(f)=RT Delta > 1/2 Window (#)=Amounts differ by > 25% (m)=manual int.

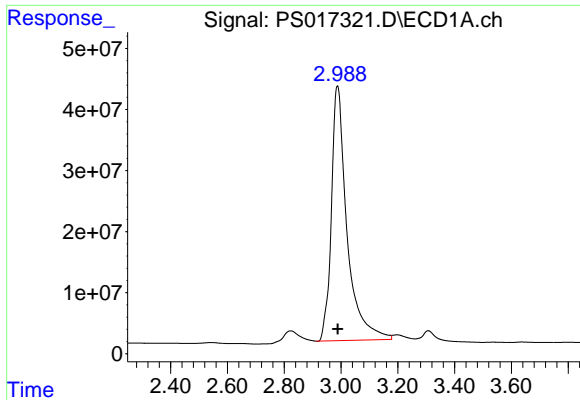
Data Path : Z:\pestpcbsrv\HPCHEM1\ECD\_S\Data\PS110221\  
 Data File : PS017321.D  
 Signal(s) : Signal #1: ECD1A.ch Signal #2: ECD2B.ch  
 Acq On : 02 Nov 2021 23:34  
 Operator : DD\AJ  
 Sample : HSTDCCC750  
 Misc :  
 ALS Vial : 3 Sample Multiplier: 1

Instrument :  
 ECD\_S  
 ClientSampleId :

Integration File signal 1: autoint1.e  
 Integration File signal 2: autoint2.e  
 Quant Time: Nov 03 02:43:41 2021  
 Quant Method : Z:\pestpcbsrv\HPCHEM1\ECD\_S\Method\PS101821.M  
 Quant Title : 8080.M  
 QLast Update : Tue Oct 19 01:21:46 2021  
 Response via : Initial Calibration  
 Integrator: ChemStation

Volume Inj. : 2 µl  
 Signal #1 Phase : Rtx-CLPesticides Signal #2 Phase: Rtx-CLPesticides2  
 Signal #1 Info : 30M x 0.32mm x0.5 Signal #2 Info : 30M x 0.32mm x 0.25µm

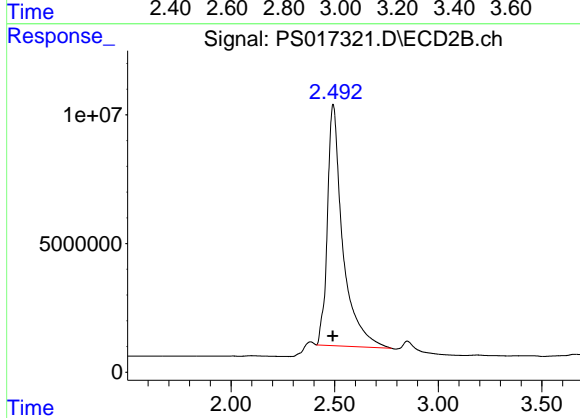




#1 Dalapon

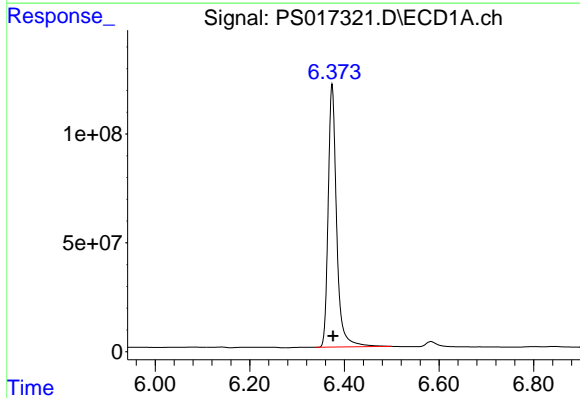
R.T.: 2.988 min  
Delta R.T.: -0.001 min  
Response: 1598009262  
Conc: 735.93 ng/ml

Instrument :  
ECD\_S  
ClientSampleId :



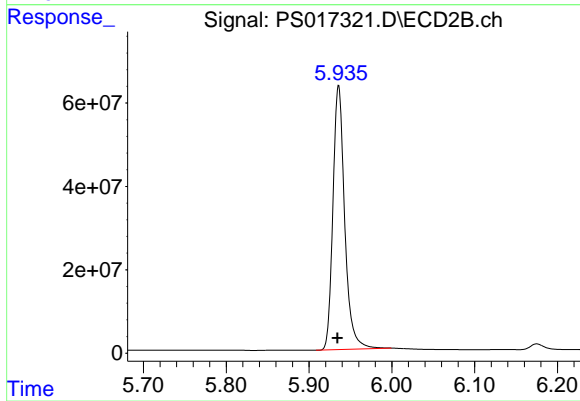
#1 Dalapon

R.T.: 2.492 min  
Delta R.T.: 0.001 min  
Response: 482690414  
Conc: 745.99 ng/ml



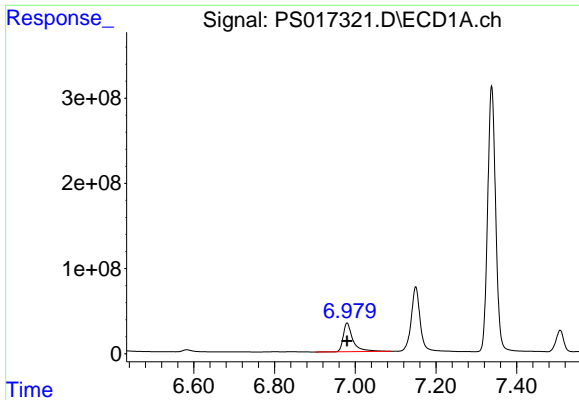
#2 3,5-DICHLOROBENZOIC ACID

R.T.: 6.374 min  
Delta R.T.: -0.002 min  
Response: 1498506607  
Conc: 694.17 ng/ml



#2 3,5-DICHLOROBENZOIC ACID

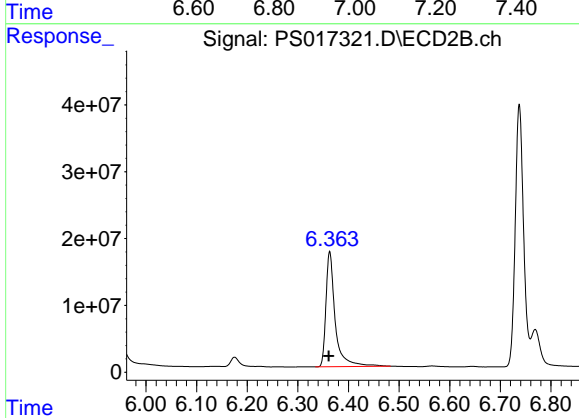
R.T.: 5.936 min  
Delta R.T.: 0.002 min  
Response: 626126057  
Conc: 720.90 ng/ml



#3 4-Nitrophenol

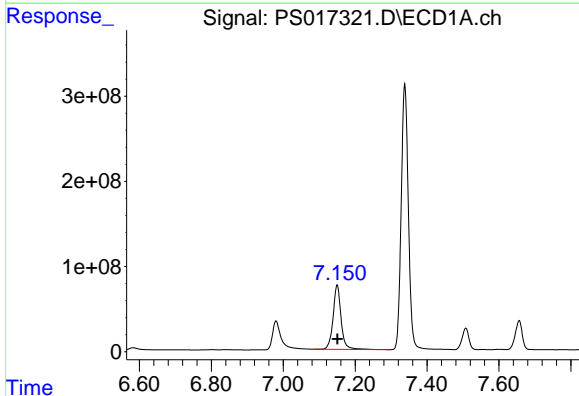
R.T.: 6.980 min  
 Delta R.T.: 0.000 min  
 Response: 557712377  
 Conc: 639.46 ng/ml

Instrument :  
 ECD\_S  
 ClientSampleId :



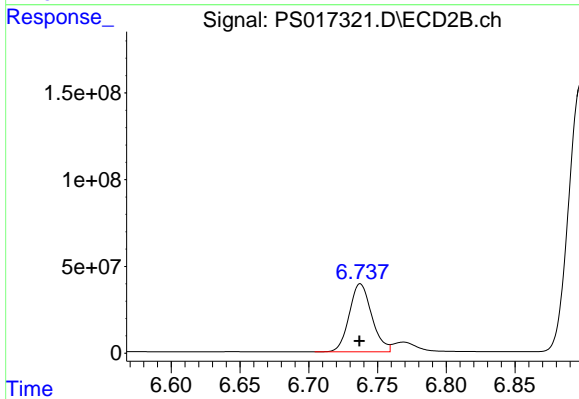
#3 4-Nitrophenol

R.T.: 6.363 min  
 Delta R.T.: 0.002 min  
 Response: 219383664  
 Conc: 680.59 ng/ml



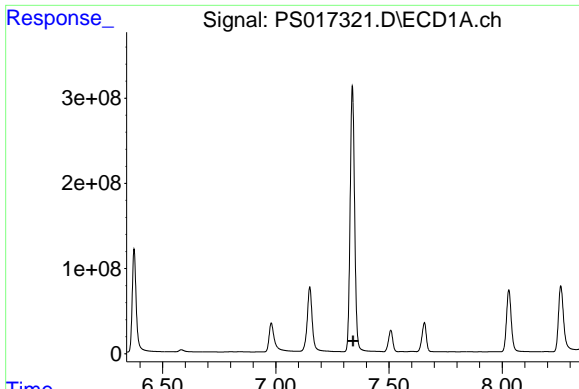
#4 2,4-DCAA

R.T.: 7.150 min  
 Delta R.T.: -0.001 min  
 Response: 1166603656  
 Conc: 763.25 ng/ml



#4 2,4-DCAA

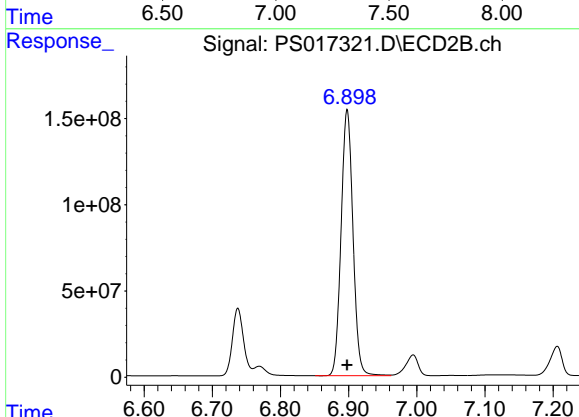
R.T.: 6.738 min  
 Delta R.T.: 0.000 min  
 Response: 446185864  
 Conc: 763.44 ng/ml



#5 DICAMBA

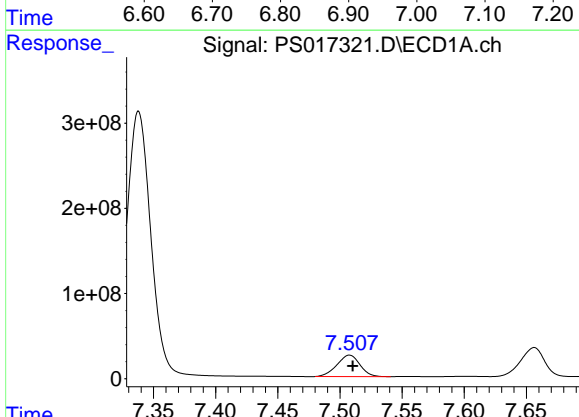
R.T.: 0.000 min  
 Exp R.T.: 7.341 min  
 Response: 0  
 Conc: N.D.

Instrument :  
 ECD\_S  
 ClientSampleId :



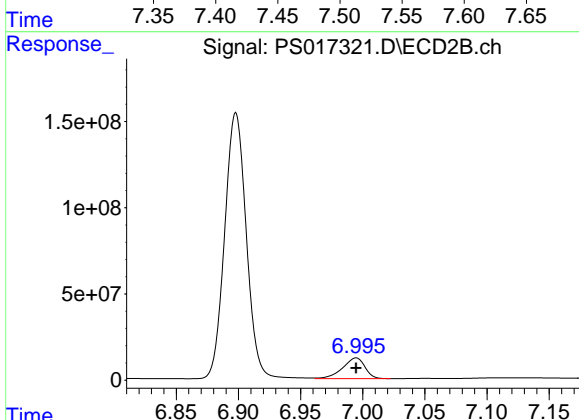
#5 DICAMBA

R.T.: 6.898 min  
 Delta R.T.: 0.000 min  
 Response: 1869163051  
 Conc: 734.14 ng/ml



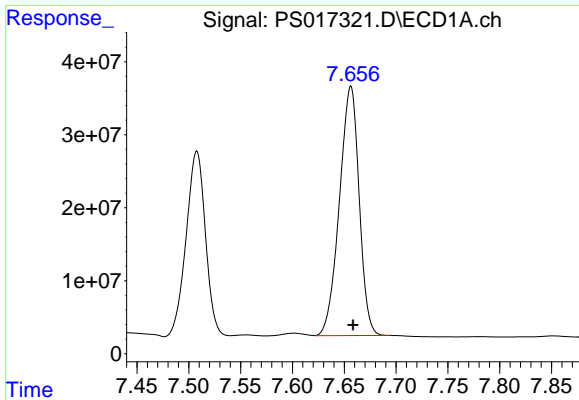
#6 MCP

R.T.: 7.508 min  
 Delta R.T.: -0.002 min  
 Response: 324843982  
 Conc: 72.66 ug/ml



#6 MCP

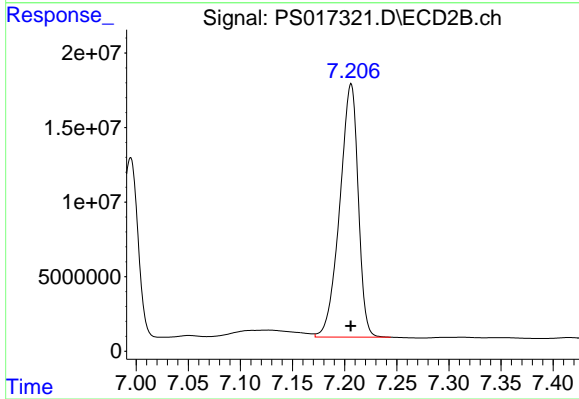
R.T.: 6.995 min  
 Delta R.T.: 0.000 min  
 Response: 149927337  
 Conc: 74.45 ug/ml



#7 MCPA

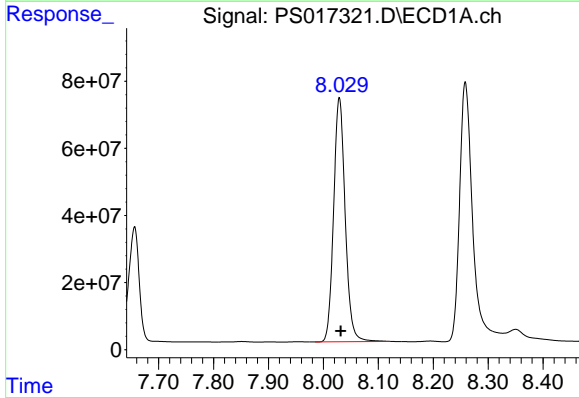
R.T.: 7.656 min  
 Delta R.T.: -0.002 min  
 Response: 452966750  
 Conc: 73.42 ug/ml

Instrument :  
 ECD\_S  
 ClientSampleId :



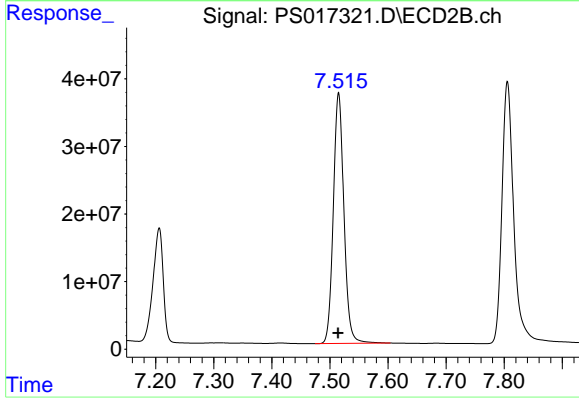
#7 MCPA

R.T.: 7.206 min  
 Delta R.T.: 0.000 min  
 Response: 209043312  
 Conc: 70.61 ug/ml



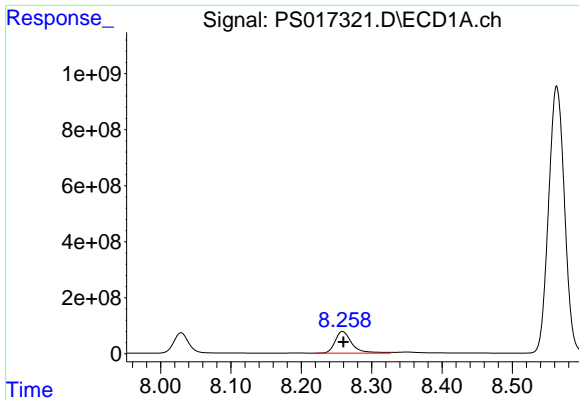
#8 DICHLORPROP

R.T.: 8.029 min  
 Delta R.T.: -0.003 min  
 Response: 1064877967  
 Conc: 710.21 ng/ml



#8 DICHLORPROP

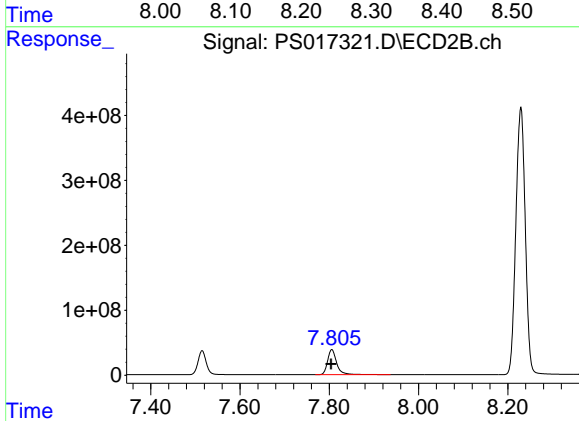
R.T.: 7.515 min  
 Delta R.T.: 0.000 min  
 Response: 470213786  
 Conc: 731.17 ng/ml



#9 2,4-D

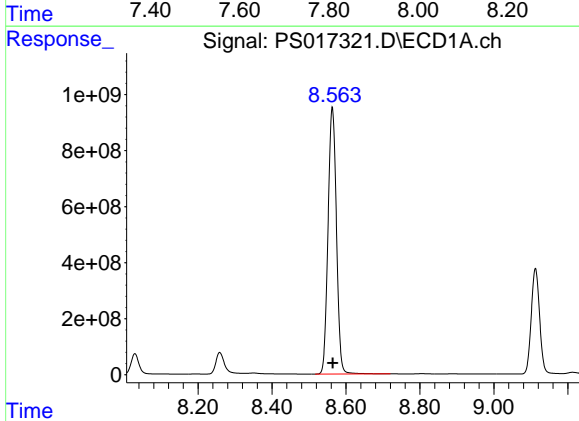
R.T.: 8.258 min  
 Delta R.T.: -0.001 min  
 Response: 1277204793  
 Conc: 721.10 ng/ml

Instrument :  
 ECD\_S  
 ClientSampleId :



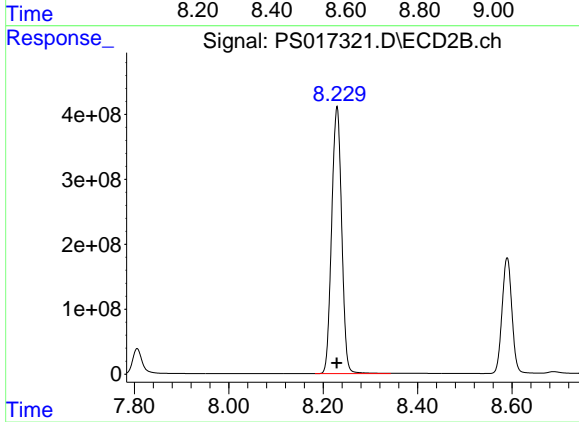
#9 2,4-D

R.T.: 7.806 min  
 Delta R.T.: 0.002 min  
 Response: 550859991  
 Conc: 731.96 ng/ml



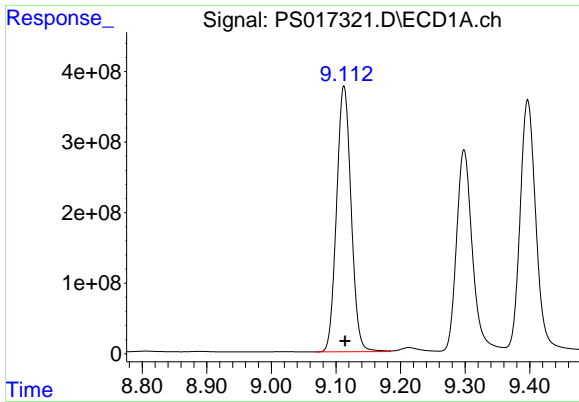
#10 Pentachlorophenol

R.T.: 8.563 min  
 Delta R.T.: -0.002 min  
 Response: 14997423027  
 Conc: 722.84 ng/ml



#10 Pentachlorophenol

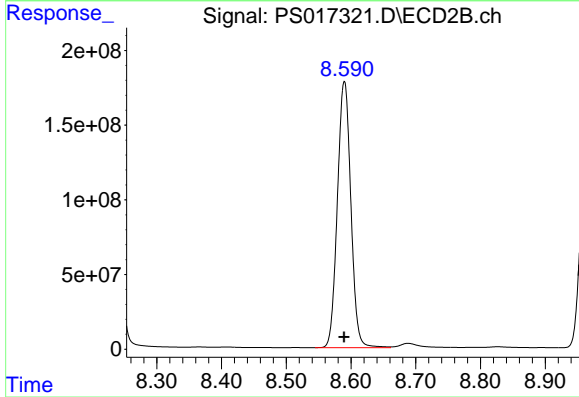
R.T.: 8.229 min  
 Delta R.T.: 0.000 min  
 Response: 6060063123  
 Conc: 742.23 ng/ml



#11 2,4,5-TP (SILVEX)

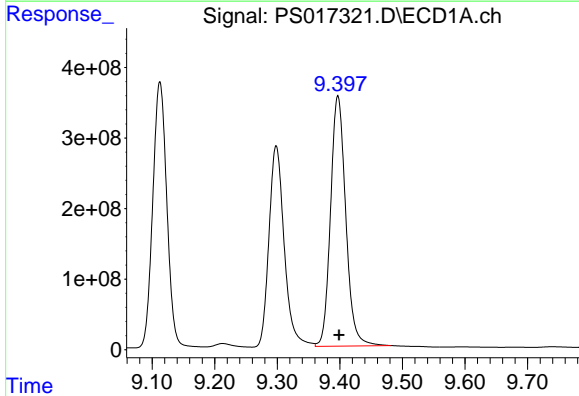
R.T.: 9.112 min  
 Delta R.T.: -0.002 min  
 Response: 5892487559  
 Conc: 724.54 ng/ml

Instrument :  
 ECD\_S  
 ClientSampleId :



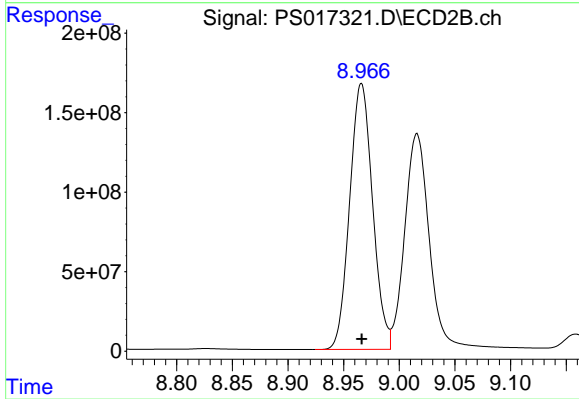
#11 2,4,5-TP (SILVEX)

R.T.: 8.590 min  
 Delta R.T.: 0.000 min  
 Response: 2576492808  
 Conc: 747.43 ng/ml



#12 2,4,5-T

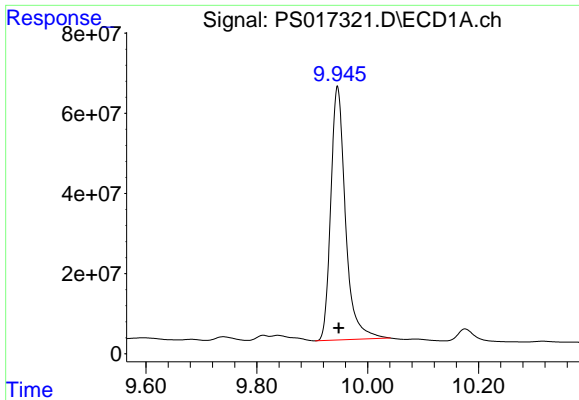
R.T.: 9.397 min  
 Delta R.T.: -0.002 min  
 Response: 5985844678  
 Conc: 745.24 ng/ml



#12 2,4,5-T

R.T.: 8.966 min  
 Delta R.T.: 0.000 min  
 Response: 2402224683  
 Conc: 757.92 ng/ml

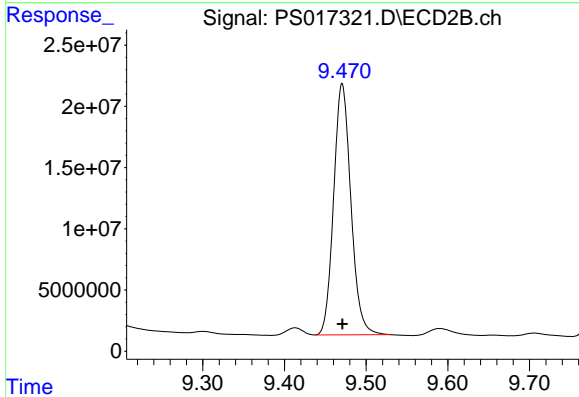




#13 2,4-DB

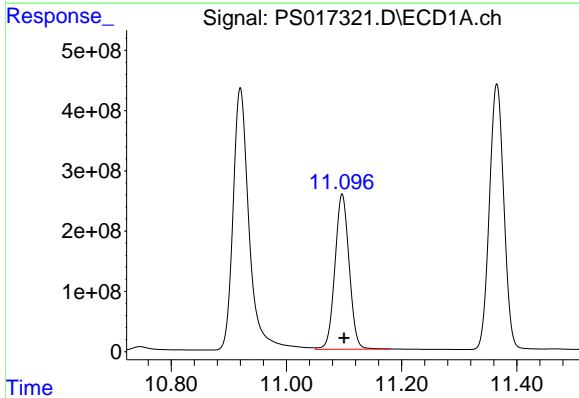
R.T.: 9.946 min  
 Delta R.T.: -0.002 min  
 Response: 1162702411  
 Conc: 772.89 ng/ml

Instrument :  
 ECD\_S  
 ClientSampleId :



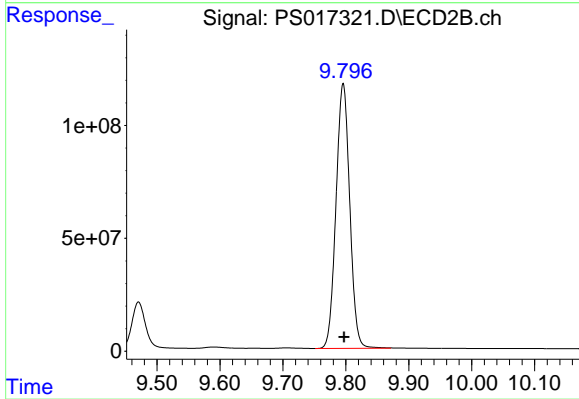
#13 2,4-DB

R.T.: 9.471 min  
 Delta R.T.: 0.000 min  
 Response: 301340048  
 Conc: 726.51 ng/ml



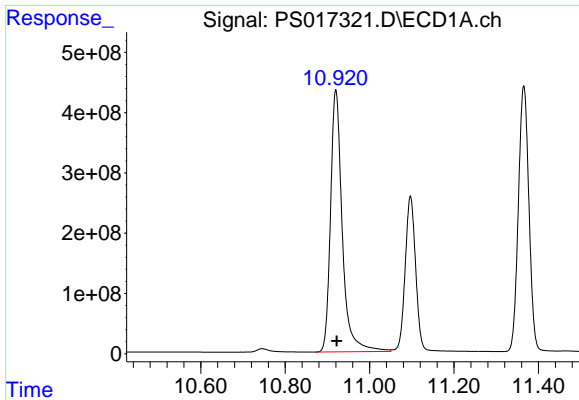
#14 DINOSEB

R.T.: 11.097 min  
 Delta R.T.: -0.003 min  
 Response: 4414302256  
 Conc: 779.25 ng/ml



#14 DINOSEB

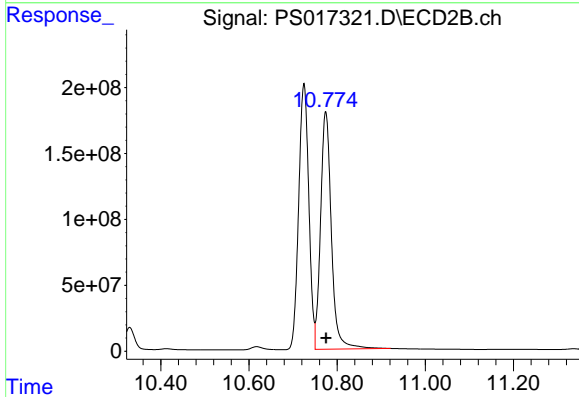
R.T.: 9.796 min  
 Delta R.T.: -0.001 min  
 Response: 1778091133  
 Conc: 805.81 ng/ml



#15 Picloram

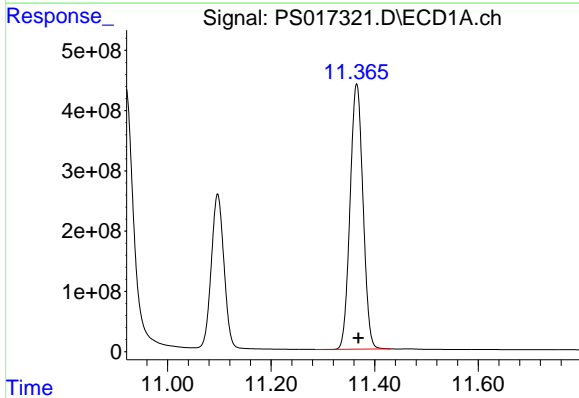
R.T.: 10.920 min  
 Delta R.T.: -0.002 min  
 Response: 8409914448  
 Conc: 787.34 ng/ml

Instrument :  
 ECD\_S  
 ClientSampleId :



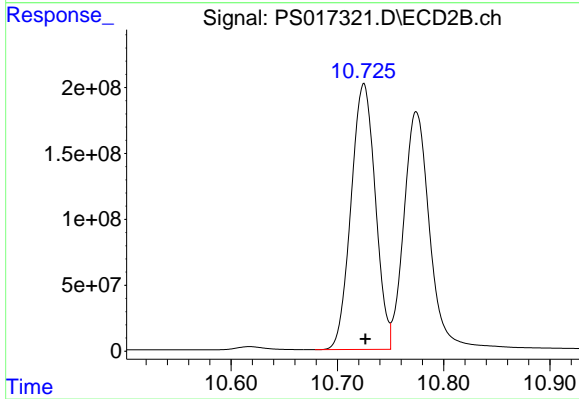
#15 Picloram

R.T.: 10.774 min  
 Delta R.T.: 0.000 min  
 Response: 3068117405  
 Conc: 801.13 ng/ml



#16 DCPA

R.T.: 11.365 min  
 Delta R.T.: -0.003 min  
 Response: 7606506098  
 Conc: 746.89 ng/ml



#16 DCPA

R.T.: 10.725 min  
 Delta R.T.: -0.002 min  
 Response: 3202509522  
 Conc: 750.49 ng/ml