

Data Path : Z:\pestpcbsrv\HPCHEM1\ECD_S\Data\PS110424\
 Data File : PS028169.D
 Signal(s) : Signal #1: ECD1A.ch Signal #2: ECD2B.ch
 Acq On : 04 Nov 2024 14:47
 Operator : AR\AJ
 Sample : HEXANE
 Misc :
 ALS Vial : 1 Sample Multiplier: 1

Instrument :
 ECD_S
 ClientSampleId :
 HEXANE

Integration File signal 1: autoint1.e
 Integration File signal 2: autoint2.e
 Quant Time: Nov 05 02:12:38 2024
 Quant Method : Z:\pestpcbsrv\HPCHEM1\ECD_S\Method\PS110424.M
 Quant Title : 8080.M
 QLast Update : Mon Nov 04 23:43:01 2024
 Response via : Initial Calibration
 Integrator: ChemStation

Volume Inj. : 1 µl
 Signal #1 Phase : ZB-MR1 Signal #2 Phase: ZB-MR2
 Signal #1 Info : 30M x 0.32mm x0.5 Signal #2 Info : 30M x 0.32mm x 0.25µm

	Compound	RT#1	RT#2	Resp#1	Resp#2	ng/ml	ng/ml	

System Monitoring Compounds								
4)	S 2,4-DCAA	7.680	0.000	1295113	0	<MDL	N.D.	#
Target Compounds								
2)	T 3,5-DICHL...	6.848f	0.000	655513	0	<MDL	N.D.	#
3)	T 4-Nitroph...	7.474	0.000	2003198	0	1.493	N.D.	#
8)	T DICHLORPROP	8.612f	0.000	2318291	0	<MDL	N.D.	#
9)	T 2,4-D	8.787f	0.000	3493973	0	1.349	N.D.	#
10)	T Pentachlo...	9.132	0.000	1470735	0	<MDL	N.D.	#
11)	T 2,4,5-TP ...	9.672f	0.000	1926067	0	<MDL	N.D.	#
12)	T 2,4,5-T	10.020	0.000	1161189	0	<MDL	N.D.	#
13)	T 2,4-DB	10.551f	0.000	12125295	0	6.242	N.D.	#
14)	T DINOSEB	11.810	0.000	769221	0	<MDL	N.D.	#
15)	T Picloram	11.619	12.540f	2698279	3412908	<MDL	<MDL	#
16)	T DCPA	12.114	12.540	7626441	3412908	<MDL	<MDL	#

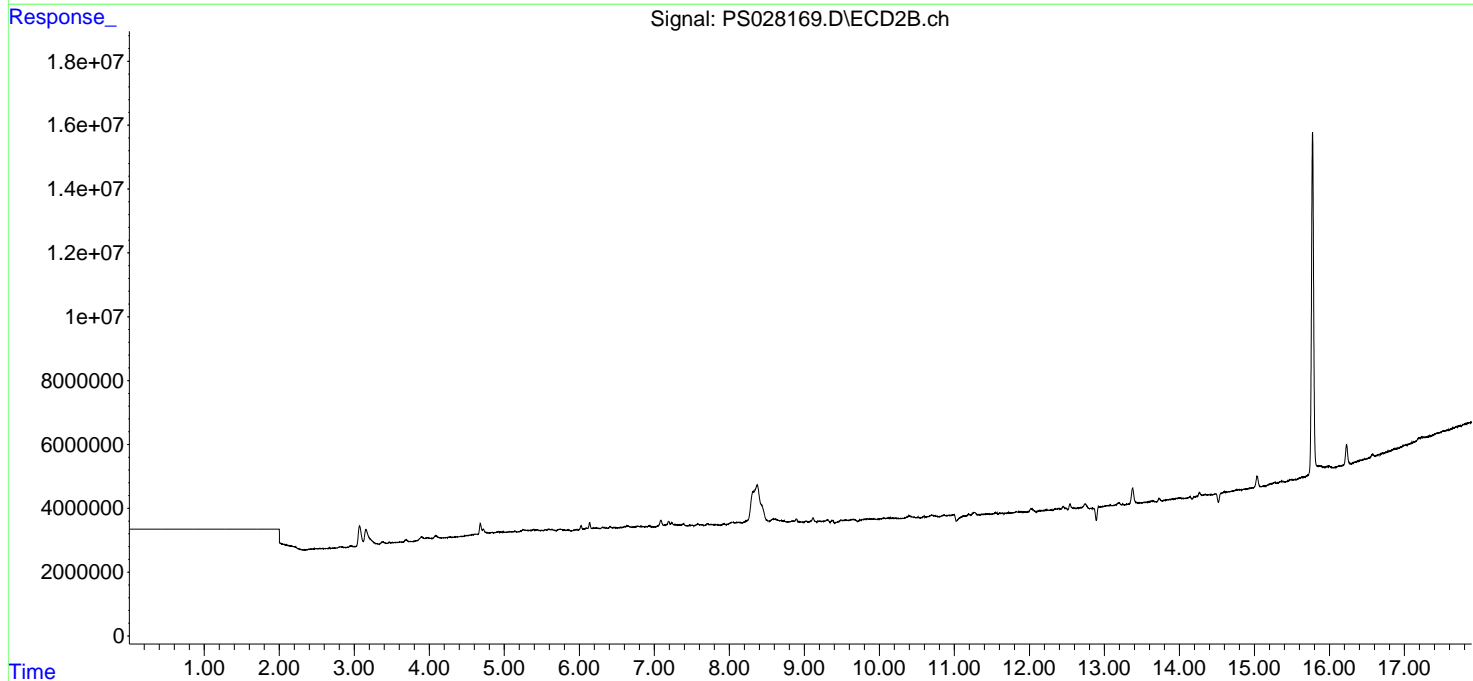
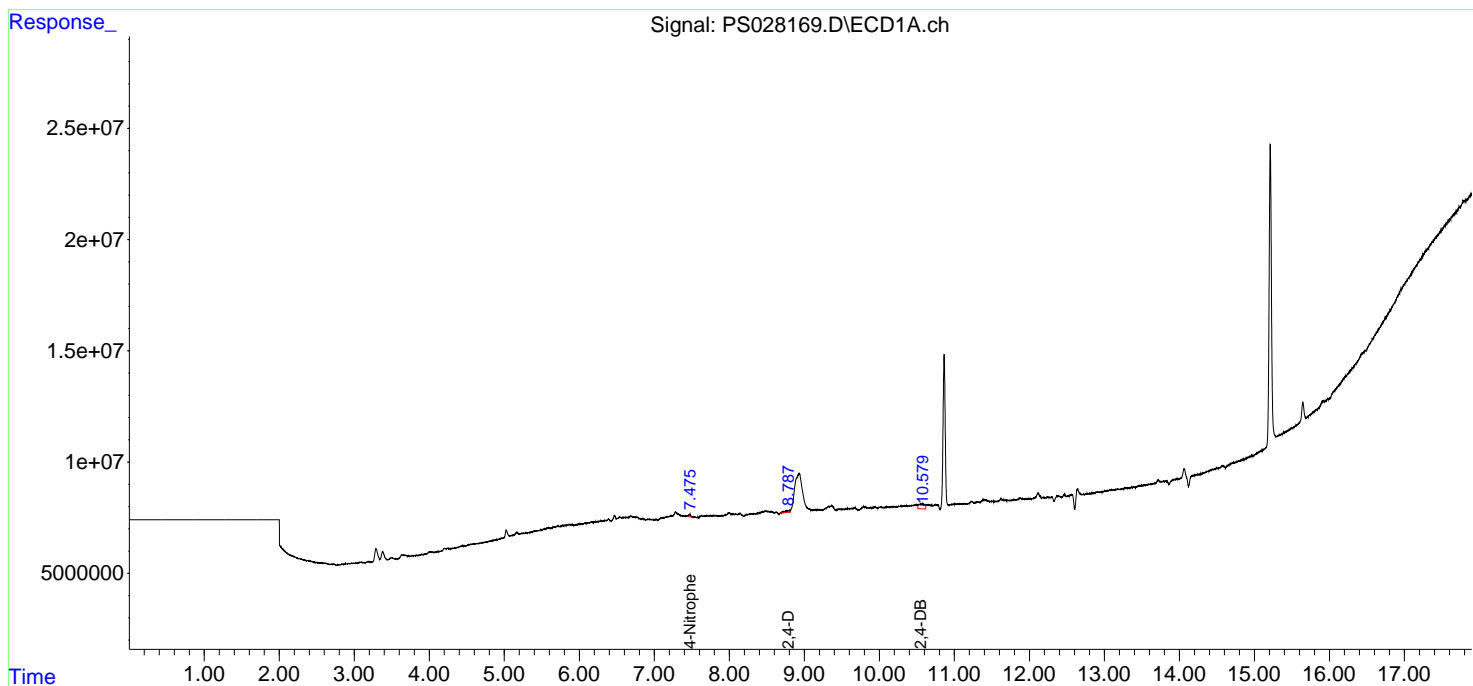
(f)=RT Delta > 1/2 Window (#)=Amounts differ by > 25% (m)=manual int.

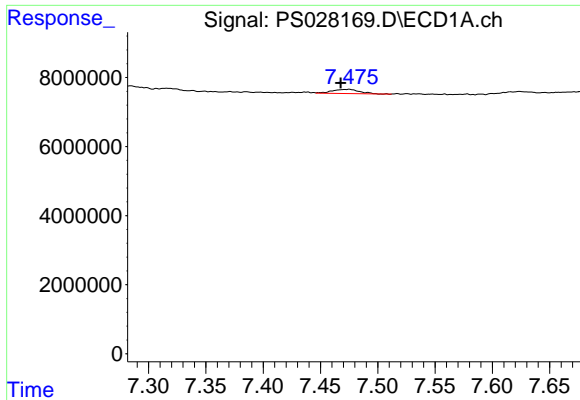
Data Path : Z:\pestpcbsrv\HPCHEM1\ECD_S\Data\PS110424\
 Data File : PS028169.D
 Signal(s) : Signal #1: ECD1A.ch Signal #2: ECD2B.ch
 Acq On : 04 Nov 2024 14:47
 Operator : AR\AJ
 Sample : HEXANE
 Misc :
 ALS Vial : 1 Sample Multiplier: 1

Instrument :
 ECD_S
 ClientSampleId :
 HEXANE

Integration File signal 1: autoint1.e
 Integration File signal 2: autoint2.e
 Quant Time: Nov 05 02:12:38 2024
 Quant Method : Z:\pestpcbsrv\HPCHEM1\ECD_S\Method\PS110424.M
 Quant Title : 8080.M
 QLast Update : Mon Nov 04 23:43:01 2024
 Response via : Initial Calibration
 Integrator: ChemStation

Volume Inj. : 1 µl
 Signal #1 Phase : ZB-MR1 Signal #2 Phase: ZB-MR2
 Signal #1 Info : 30M x 0.32mm x 0.5 Signal #2 Info : 30M x 0.32mm x 0.25µm

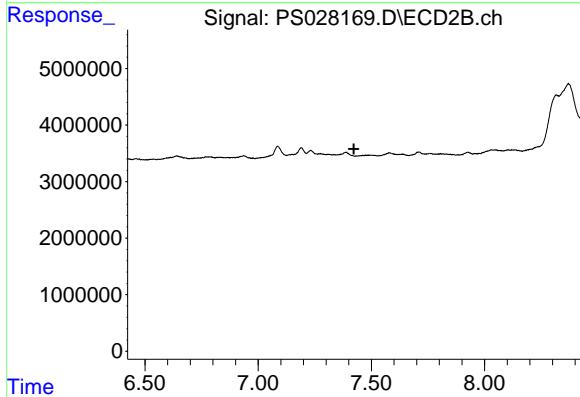




#3 4-Nitrophenol

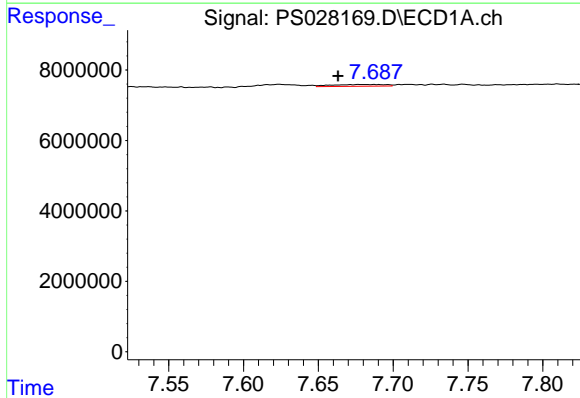
R.T.: 7.474 min
 Delta R.T.: 0.006 min
 Response: 2003198
 Conc: 1.49 ng/ml

Instrument :
 ECD_S
 ClientSampleId :
 HEXANE



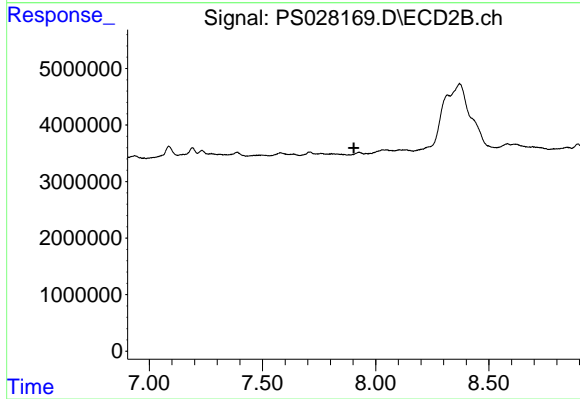
#3 4-Nitrophenol

R.T.: 0.000 min
 Exp R.T. : 7.423 min
 Response: 0
 Conc: N.D.



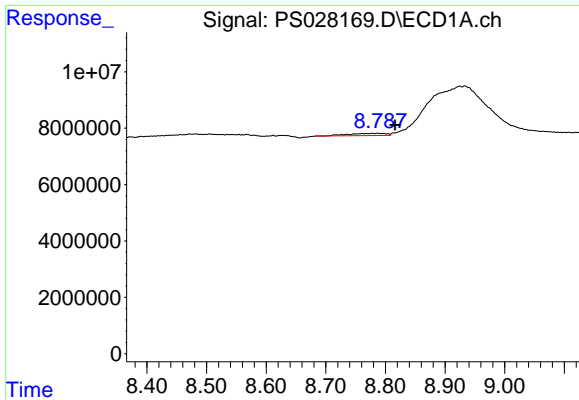
#4 2,4-DCAA

R.T.: 7.680 min
 Delta R.T.: 0.016 min
 Response: 1295113
 Conc: N.D.



#4 2,4-DCAA

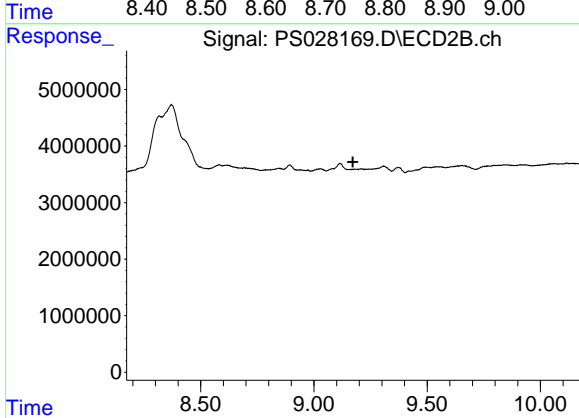
R.T.: 0.000 min
 Exp R.T. : 7.903 min
 Response: 0
 Conc: N.D.



#9 2,4-D

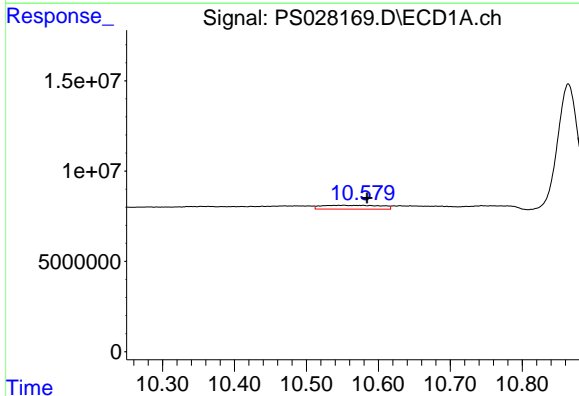
R.T.: 8.787 min
 Delta R.T.: -0.029 min
 Response: 3493973
 Conc: 1.35 ng/ml

Instrument :
 ECD_S
 ClientSampleId :
 HEXANE



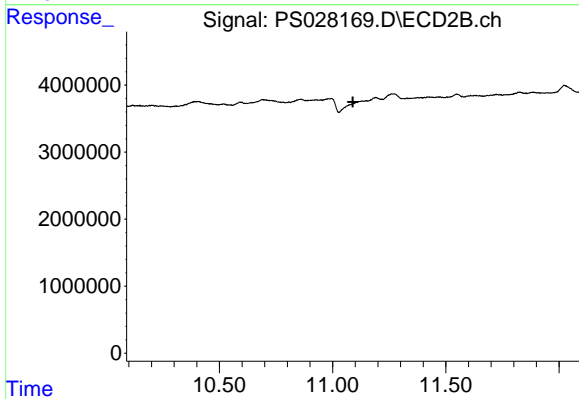
#9 2,4-D

R.T.: 0.000 min
 Exp R.T. : 9.172 min
 Response: 0
 Conc: N.D.



#13 2,4-DB

R.T.: 10.551 min
 Delta R.T.: -0.033 min
 Response: 12125295
 Conc: 6.24 ng/ml



#13 2,4-DB

R.T.: 0.000 min
 Exp R.T. : 11.090 min
 Response: 0
 Conc: N.D.