

Data Path : Z:\pestpcbsrv\HPCHEM1\ECD_S\Data\PS110518\
 Data File : PS002317.D
 Signal(s) : Signal #1: ECD1A.ch Signal #2: ECD2B.ch
 Acq On : 06 Nov 2018 00:08
 Operator : EI\SJ
 Sample : HSTDCCC750
 Misc :
 ALS Vial : 3 Sample Multiplier: 1

Instrument :
 ECD_S
 ClientSampleId :

Integration File signal 1: autoint1.e
 Integration File signal 2: autoint2.e
 Quant Time: Nov 06 01:04:26 2018
 Quant Method : Z:\pestpcbsrv\HPCHEM1\ECD_S\Method\PS102618.M
 Quant Title : 8080.M
 QLast Update : Sat Oct 27 01:34:10 2018
 Response via : Initial Calibration
 Integrator: ChemStation

Volume Inj. : 2 µl
 Signal #1 Phase : Rtx-CLPesticides Signal #2 Phase: Rtx-CLPesticides2
 Signal #1 Info : 30M x 0.32mm x0.5 Signal #2 Info : 30M x 0.32mm x 0.25µm

	Compound	RT#1	RT#2	Resp#1	Resp#2	ng/ml	ng/ml

System Monitoring Compounds							
4) S	2,4-DCAA	11.447	10.938	180.2E6	273.2E6	572.627	760.780 #
Target Compounds							
1) T	Dalapon	2.967	2.405	314.3E6	302.7E6	685.174	670.476
2) T	3,5-DICHL...	9.877	9.094	315.9E6	316.0E6	695.848	712.373
3) T	4-Nitroph...	11.039	10.085	119.2E6	120.7E6	714.658	676.752
5) T	DICAMBA	11.756	11.221	965.0E6	947.2E6	726.644	757.947
6) T	MCPD	0.000	11.452	0	65291997	N.D.	75.891 #
7) T	MCPA	0.000	11.828	0	100.9E6	N.D.	74.533 #
8) T	DICHLORPROP	12.942	12.344	252.0E6	243.3E6	723.542	757.563
9) T	2,4-D	13.299	12.815	282.8E6	317.6E6	702.881	745.719
10) T	Pentachlo...	13.678	13.361	3543.0E6	3707.8E6	736.479	789.317
11) T	2,4,5-TP ...	14.546	13.978	1234.5E6	1483.2E6	645.361	810.689 #
12) T	2,4,5-T	14.943	14.508	1289.8E6	1413.3E6	719.632	943.787 #
13) T	2,4-DB	15.688	15.192	155.4E6	173.8E6	661.811	784.287
14) T	DINOSEB	17.167	15.620	1005.4E6	1036.0E6	733.839	818.403
15) T	Picloram	16.934	16.797	1529.6E6	1914.5E6	641.273	846.308 #
16) T	DCPA	0.000	16.850	0	1724.2E6	N.D.	728.179 #

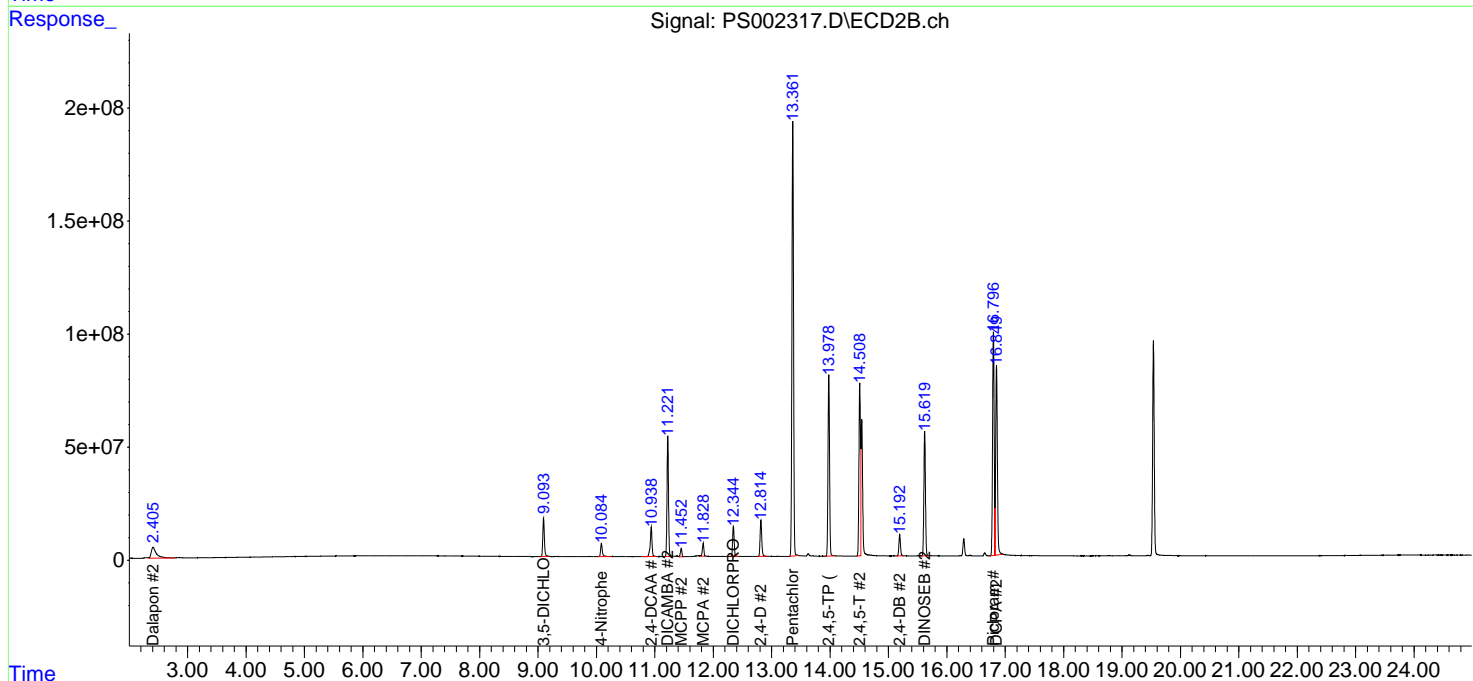
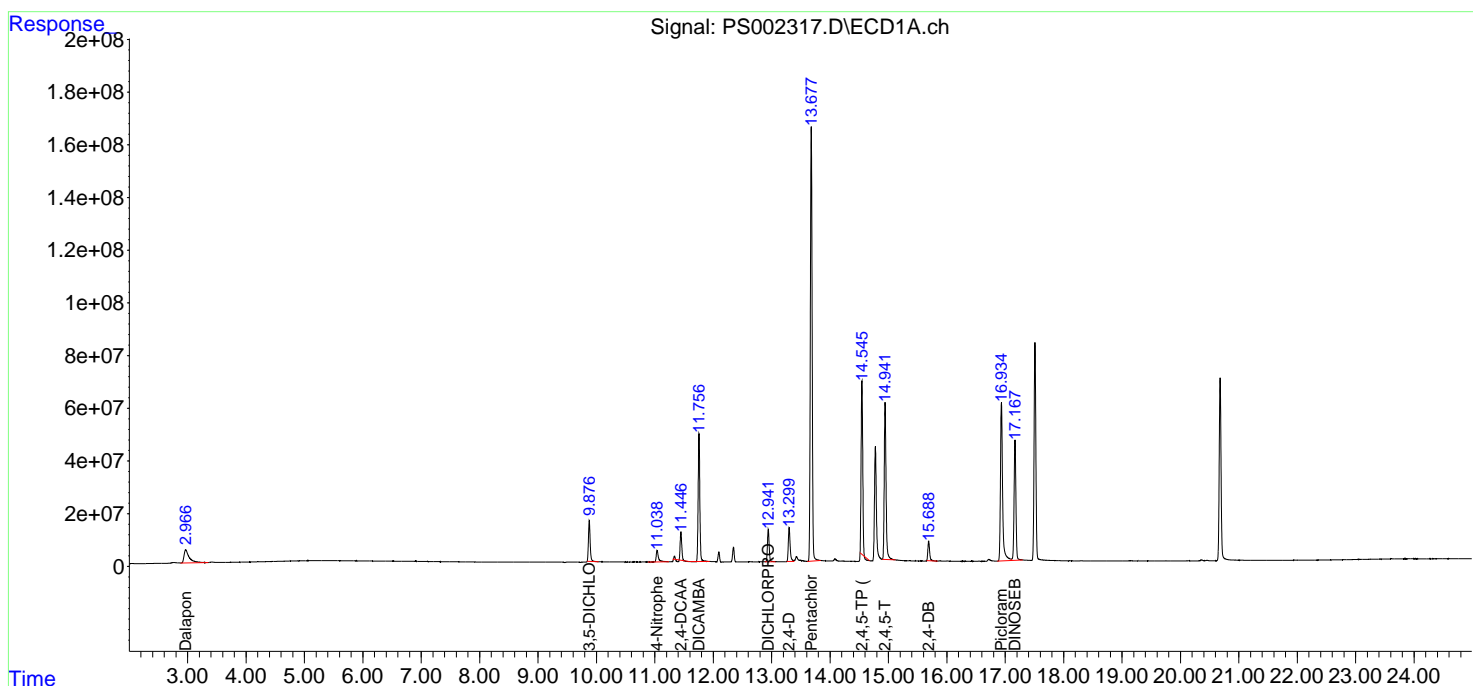
(f)=RT Delta > 1/2 Window (#)=Amounts differ by > 25% (m)=manual int.

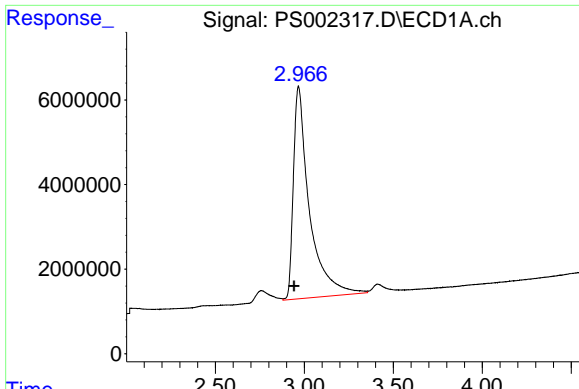
Data Path : Z:\pestpcbsrv\HPCHEM1\ECD_S\Data\PS110518\
 Data File : PS002317.D
 Signal(s) : Signal #1: ECD1A.ch Signal #2: ECD2B.ch
 Acq On : 06 Nov 2018 00:08
 Operator : EI\SJ
 Sample : HSTDCCC750
 Misc :
 ALS Vial : 3 Sample Multiplier: 1

Instrument :
 ECD_S
 ClientSampled :

Integration File signal 1: autoint1.e
 Integration File signal 2: autoint2.e
 Quant Time: Nov 06 01:04:26 2018
 Quant Method : Z:\pestpcbsrv\HPCHEM1\ECD_S\Method\PS102618.M
 Quant Title : 8080.M
 QLast Update : Sat Oct 27 01:34:10 2018
 Response via : Initial Calibration
 Integrator: ChemStation

Volume Inj. : 2 µl
 Signal #1 Phase : Rtx-CLPesticides Signal #2 Phase: Rtx-CLPesticides2
 Signal #1 Info : 30M x 0.32mm x0.5 Signal #2 Info : 30M x 0.32mm x 0.25µm

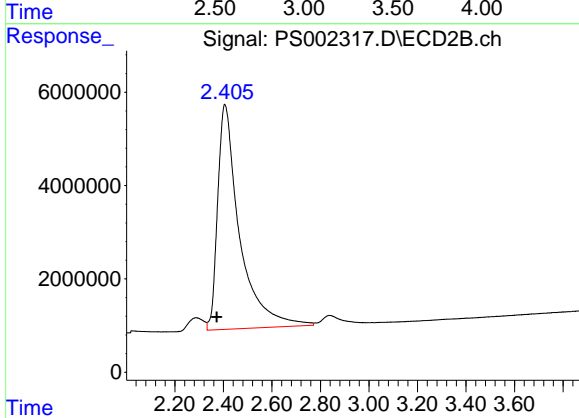




#1 Dalapon

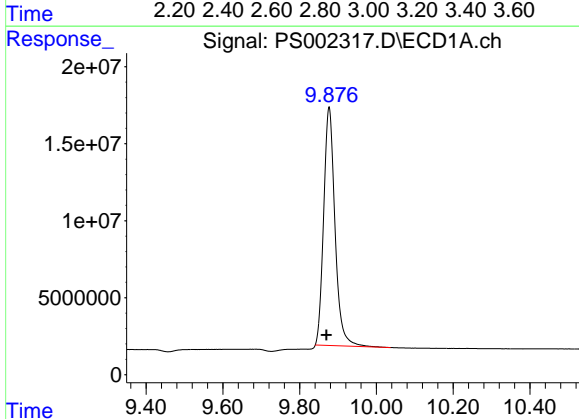
R.T.: 2.967 min
 Delta R.T.: 0.025 min
 Response: 314267006
 Conc: 685.17 ng/ml

Instrument :
 ECD_S
 ClientSampleId :



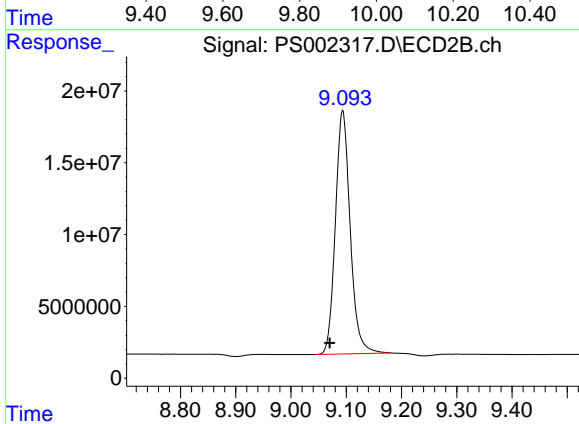
#1 Dalapon

R.T.: 2.405 min
 Delta R.T.: 0.032 min
 Response: 302724485
 Conc: 670.48 ng/ml



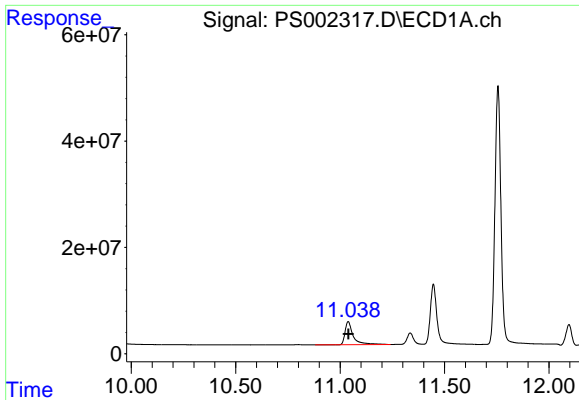
#2 3,5-DICHLOROBENZOIC ACID

R.T.: 9.877 min
 Delta R.T.: 0.007 min
 Response: 315866756
 Conc: 695.85 ng/ml



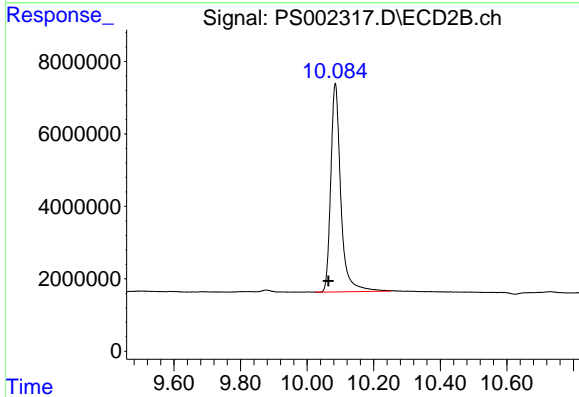
#2 3,5-DICHLOROBENZOIC ACID

R.T.: 9.094 min
 Delta R.T.: 0.023 min
 Response: 315976380
 Conc: 712.37 ng/ml

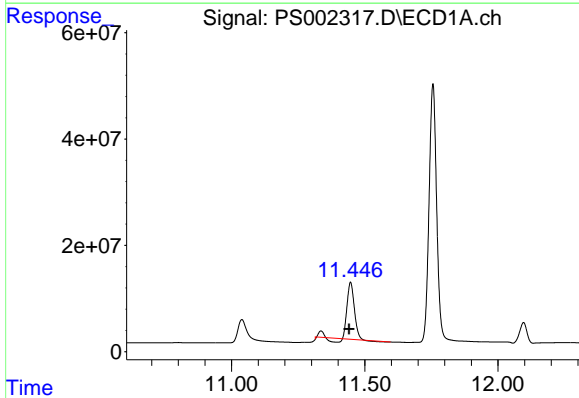


#3 4-Nitrophenol
 R.T.: 11.039 min
 Delta R.T.: -0.001 min
 Response: 119225688
 Conc: 714.66 ng/ml

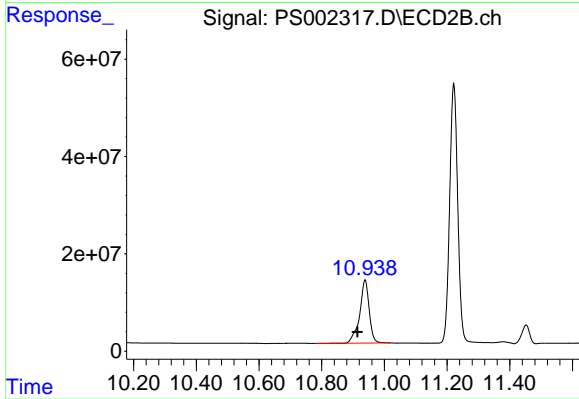
Instrument :
 ECD_S
 ClientSampled :



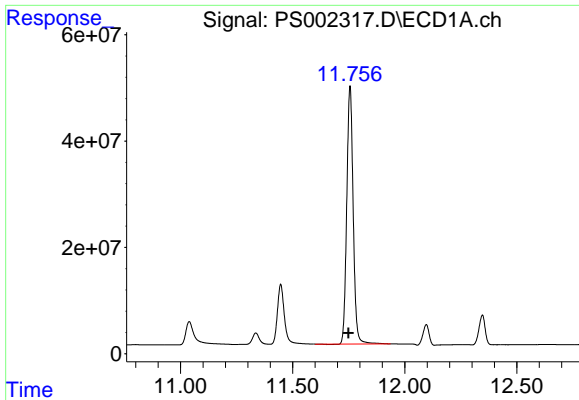
#3 4-Nitrophenol
 R.T.: 10.085 min
 Delta R.T.: 0.021 min
 Response: 120672087
 Conc: 676.75 ng/ml



#4 2,4-DCAA
 R.T.: 11.447 min
 Delta R.T.: 0.006 min
 Response: 180197454
 Conc: 572.63 ng/ml

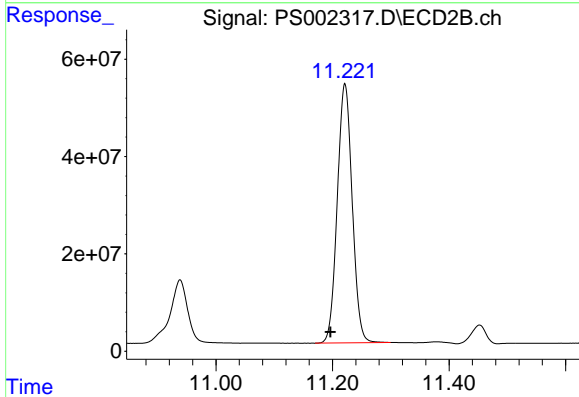


#4 2,4-DCAA
 R.T.: 10.938 min
 Delta R.T.: 0.024 min
 Response: 273194384
 Conc: 760.78 ng/ml

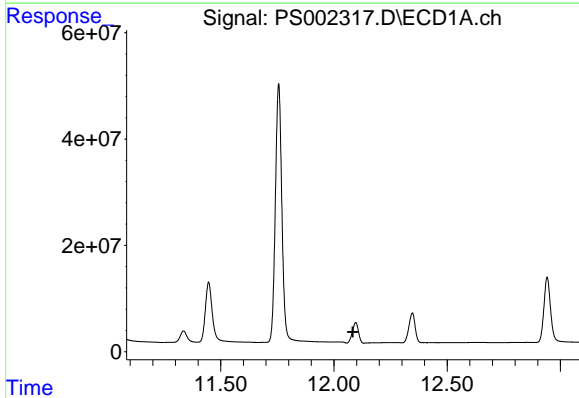


#5 DICAMBA
 R.T.: 11.756 min
 Delta R.T.: 0.006 min
 Response: 964996192
 Conc: 726.64 ng/ml

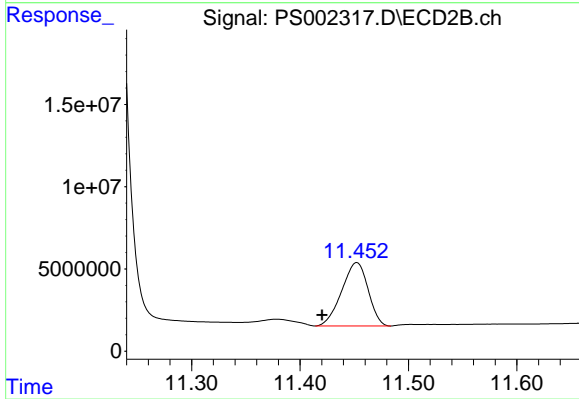
Instrument :
 ECD_S
 ClientSampled :



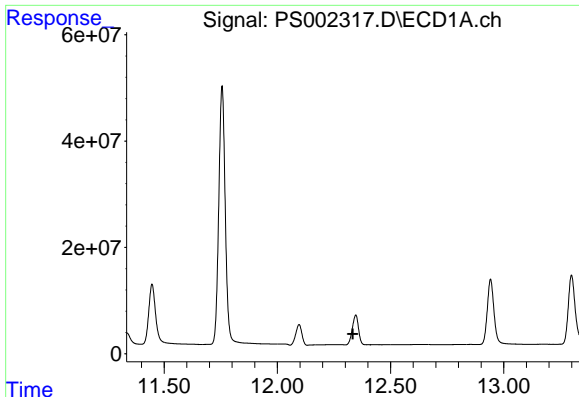
#5 DICAMBA
 R.T.: 11.221 min
 Delta R.T.: 0.025 min
 Response: 947205821
 Conc: 757.95 ng/ml



#6 MCP
 R.T.: 0.000 min
 Exp R.T. : 12.084 min
 Response: 0
 Conc: N.D.



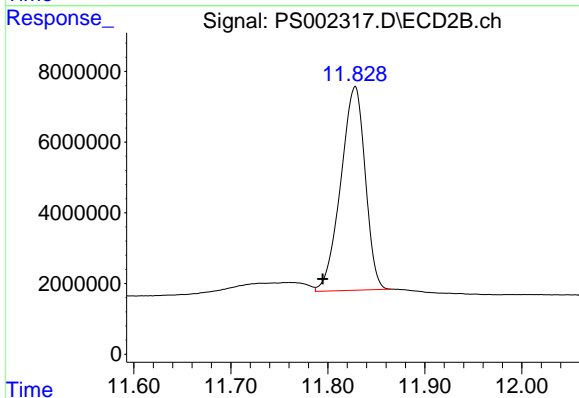
#6 MCP
 R.T.: 11.452 min
 Delta R.T.: 0.032 min
 Response: 65291997
 Conc: 75.89 ug/ml



#7 MCPA

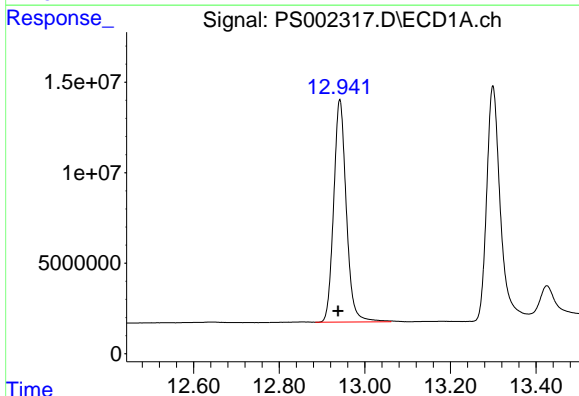
R.T.: 0.000 min
 Exp R.T.: 12.333 min
 Response: 0
 Conc: N.D.

Instrument :
 ECD_S
 ClientSampled :



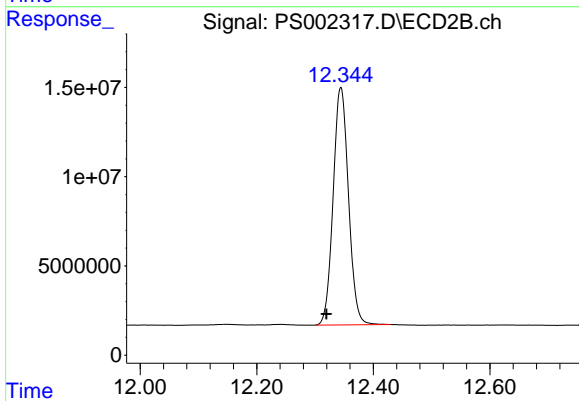
#7 MCPA

R.T.: 11.828 min
 Delta R.T.: 0.033 min
 Response: 100873525
 Conc: 74.53 ug/ml



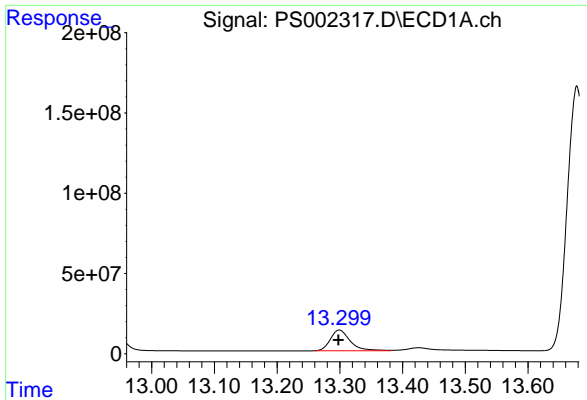
#8 DICHLORPROP

R.T.: 12.942 min
 Delta R.T.: 0.004 min
 Response: 251975435
 Conc: 723.54 ng/ml



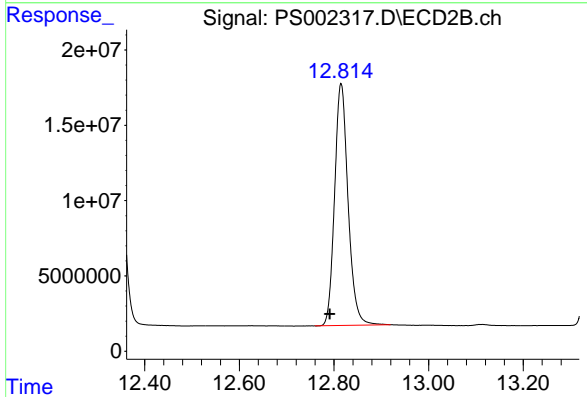
#8 DICHLORPROP

R.T.: 12.344 min
 Delta R.T.: 0.025 min
 Response: 243279320
 Conc: 757.56 ng/ml

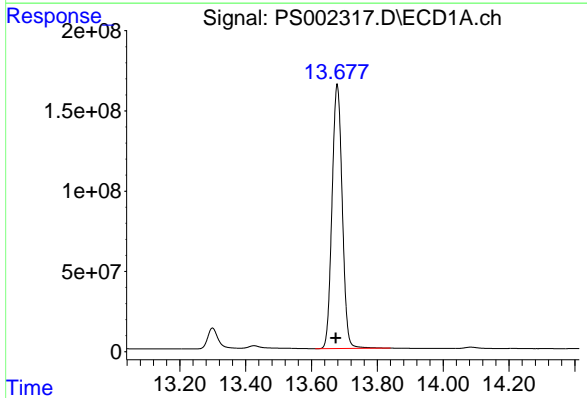


#9 2,4-D
R.T.: 13.299 min
Delta R.T.: 0.002 min
Response: 282832917
Conc: 702.88 ng/ml

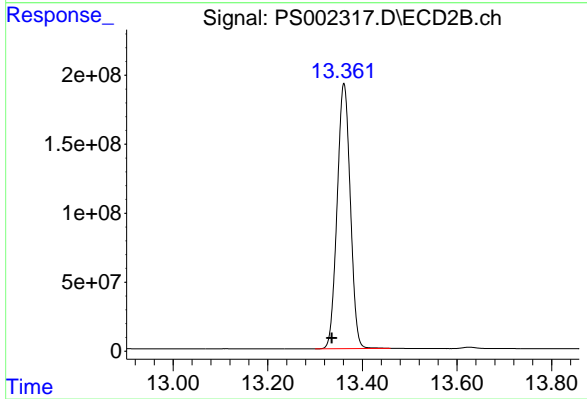
Instrument :
ECD_S
ClientSampled :



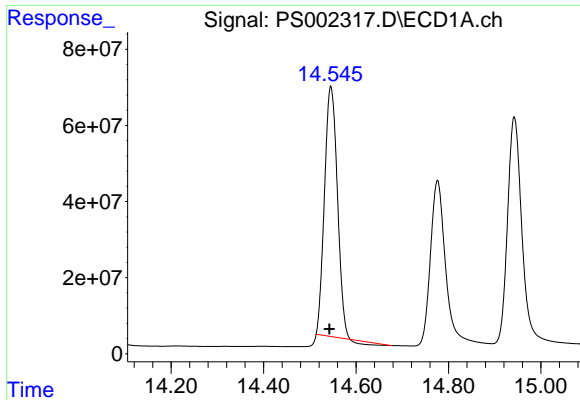
#9 2,4-D
R.T.: 12.815 min
Delta R.T.: 0.024 min
Response: 317596301
Conc: 745.72 ng/ml



#10 Pentachlorophenol
R.T.: 13.678 min
Delta R.T.: 0.004 min
Response: 3542961697
Conc: 736.48 ng/ml

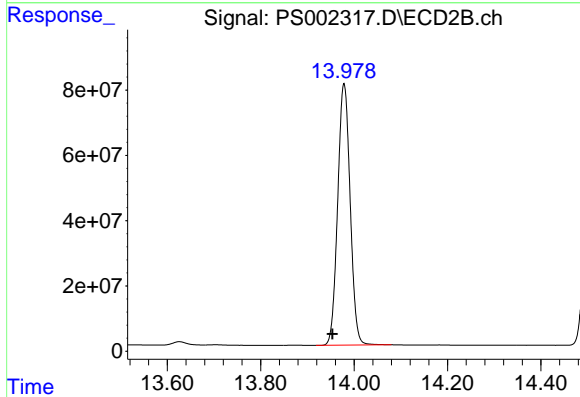


#10 Pentachlorophenol
R.T.: 13.361 min
Delta R.T.: 0.026 min
Response: 3707769778
Conc: 789.32 ng/ml

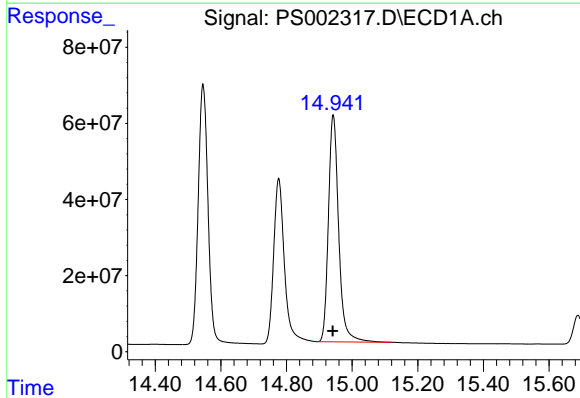


#11 2,4,5-TP (SILVEX)
 R.T.: 14.546 min
 Delta R.T.: 0.004 min
 Response: 1234470429
 Conc: 645.36 ng/ml

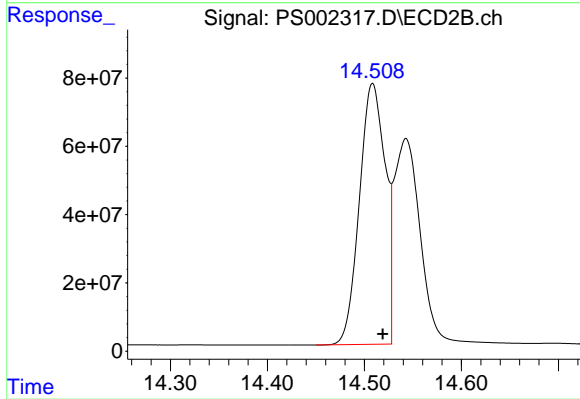
Instrument :
 ECD_S
 ClientSampled :



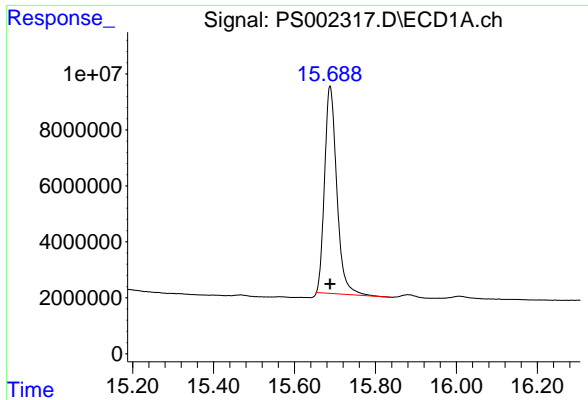
#11 2,4,5-TP (SILVEX)
 R.T.: 13.978 min
 Delta R.T.: 0.025 min
 Response: 1483208926
 Conc: 810.69 ng/ml



#12 2,4,5-T
 R.T.: 14.943 min
 Delta R.T.: 0.001 min
 Response: 1289765946
 Conc: 719.63 ng/ml

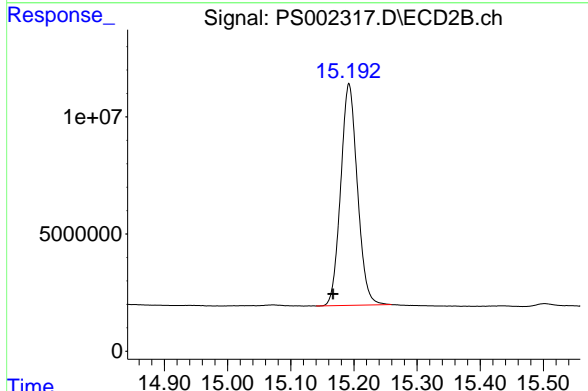


#12 2,4,5-T
 R.T.: 14.508 min
 Delta R.T.: -0.011 min
 Response: 1413301941
 Conc: 943.79 ng/ml

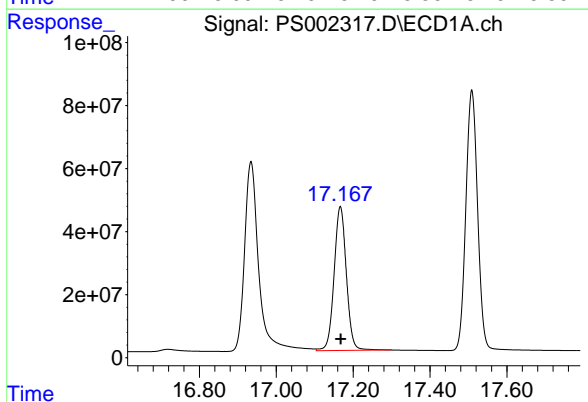


#13 2,4-DB
 R.T.: 15.688 min
 Delta R.T.: 0.000 min
 Response: 155400265
 Conc: 661.81 ng/ml

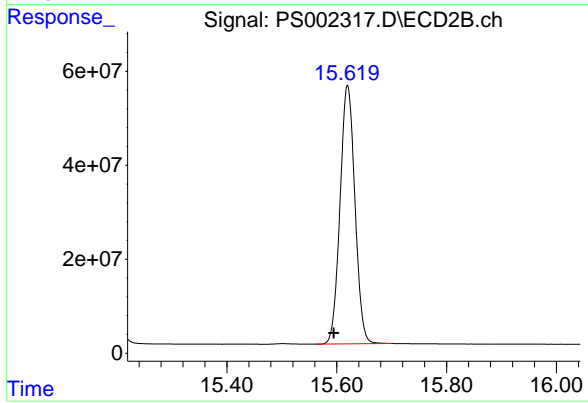
Instrument :
 ECD_S
 ClientSampleId :



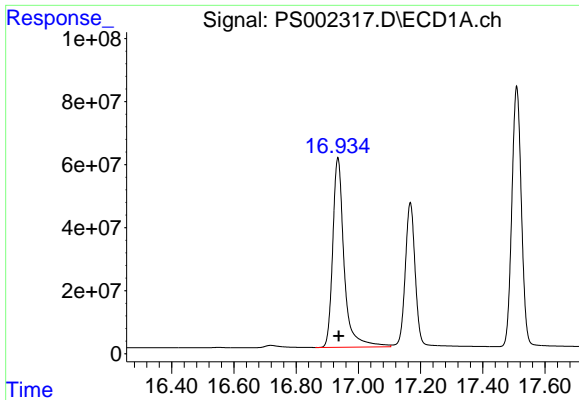
#13 2,4-DB
 R.T.: 15.192 min
 Delta R.T.: 0.025 min
 Response: 173765290
 Conc: 784.29 ng/ml



#14 DINOSEB
 R.T.: 17.167 min
 Delta R.T.: 0.000 min
 Response: 1005394836
 Conc: 733.84 ng/ml



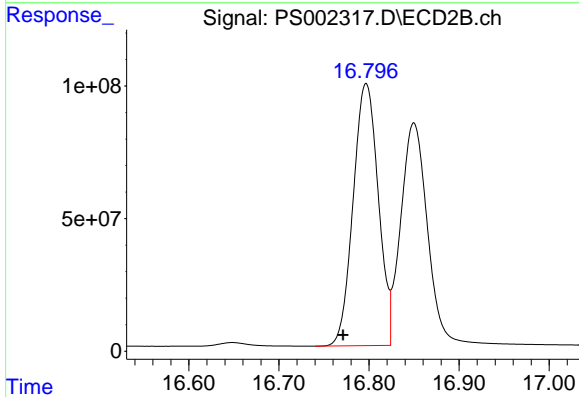
#14 DINOSEB
 R.T.: 15.620 min
 Delta R.T.: 0.025 min
 Response: 1035990620
 Conc: 818.40 ng/ml



#15 Picloram

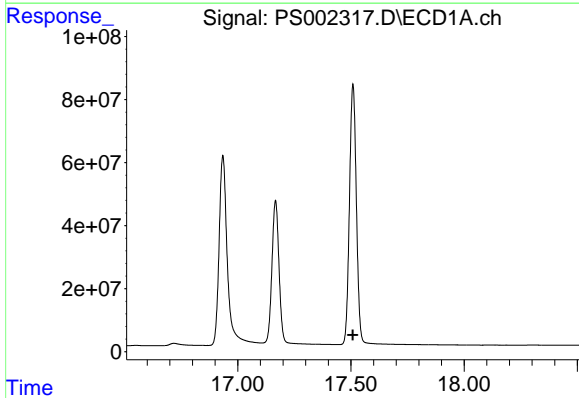
R.T.: 16.934 min
Delta R.T.: -0.003 min
Response: 1529625096
Conc: 641.27 ng/ml

Instrument :
ECD_S
ClientSampled :



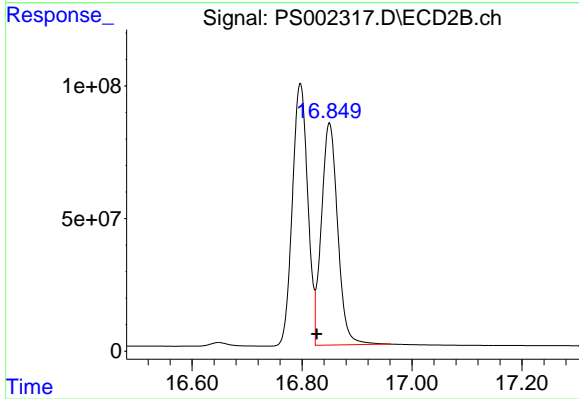
#15 Picloram

R.T.: 16.797 min
Delta R.T.: 0.026 min
Response: 1914535002
Conc: 846.31 ng/ml



#16 DCPA

R.T.: 0.000 min
Exp R.T. : 17.509 min
Response: 0
Conc: N.D.



#16 DCPA

R.T.: 16.850 min
Delta R.T.: 0.023 min
Response: 1724228198
Conc: 728.18 ng/ml