

Data Path : Z:\pestpcbsrv\HPCHEM1\ECD\_S\Data\PS110524\  
 Data File : PS028241.D  
 Signal(s) : Signal #1: ECD1A.ch Signal #2: ECD2B.ch  
 Acq On : 06 Nov 2024 05:00  
 Operator : AR\AJ  
 Sample : P4602-44MS  
 Misc :  
 ALS Vial : 22 Sample Multiplier: 1

Instrument :  
 ECD\_S  
 ClientSampleId :  
 CC0R8MS

Integration File signal 1: autoint1.e  
 Integration File signal 2: autoint2.e  
 Quant Time: Nov 06 05:43:27 2024  
 Quant Method : Z:\pestpcbsrv\HPCHEM1\ECD\_S\Method\PS110524.M  
 Quant Title : 8080.M  
 QLast Update : Wed Nov 06 00:14:58 2024  
 Response via : Initial Calibration  
 Integrator: ChemStation

Volume Inj. : 1 µl  
 Signal #1 Phase : ZB-MR2 Signal #2 Phase: ZB-MR2  
 Signal #1 Info : 30M x 0.32mm x0.5 Signal #2 Info : 30M x 0.32mm x 0.25µm

| Compound                    | RT#1   | RT#2   | Resp#1   | Resp#2   | ng/ml   | ng/ml     |
|-----------------------------|--------|--------|----------|----------|---------|-----------|
| System Monitoring Compounds |        |        |          |          |         |           |
| 4) S 2,4-DCAA               | 7.263  | 7.766  | 678.7E6  | 460.4E6  | 376.433 | 294.396   |
| Target Compounds            |        |        |          |          |         |           |
| 1) T Dalapon                | 2.651  | 2.711  | 495.7E6  | 1760.3E6 | 155.612 | 636.033 # |
| 2) T 3,5-DICHL...           | 6.431  | 6.717  | 542.6E6  | 400.5E6  | 193.601 | 170.941   |
| 3) T 4-Nitroph...           | 7.064  | 7.293  | 228.7E6  | 232.4E6  | 192.965 | 219.576   |
| 5) T DICAMBA                | 7.453  | 7.968  | 2377.1E6 | 1693.1E6 | 300.957 | 234.731   |
| 6) T MCPP                   | 7.632  | 8.063  | 66528602 | 106.5E6  | 12.081  | 20.583 #  |
| 7) T MCPA                   | 7.784  | 8.311  | 199.0E6  | 192.4E6  | 24.532  | 26.829    |
| 8) T DICHLORPROP            | 8.164  | 8.685  | 329.0E6  | 245.9E6  | 182.111 | 141.263   |
| 9) T 2,4-D                  | 8.395  | 9.017  | 731.6E6  | 506.8E6  | 360.832 | 259.926 # |
| 10) T Pentachlo...          | 8.695  | 9.548  | 2220.8E6 | 1444.2E6 | 83.034  | 55.826 #  |
| 11) T 2,4,5-TP ...          | 9.278  | 9.924  | 1304.6E6 | 1037.3E6 | 130.337 | 96.472 #  |
| 12) T 2,4,5-T               | 9.570  | 10.346 | 2131.8E6 | 1708.1E6 | 208.650 | 159.666   |
| 13) T 2,4-DB                | 10.149 | 10.911 | 336.7E6  | 229.2E6  | 204.188 | 165.382   |
| 14) T DINOSEB               | 11.379 | 11.298 | 301.0E6  | 339.6E6  | 40.057  | 45.268    |
| 15) T Picloram              | 11.171 | 12.394 | 7372.2E6 | 4632.3E6 | 422.492 | 282.155 # |
| 16) T DCPA                  | 11.657 | 12.341 | 8047.9E6 | 5238.1E6 | 646.422 | 415.600 # |

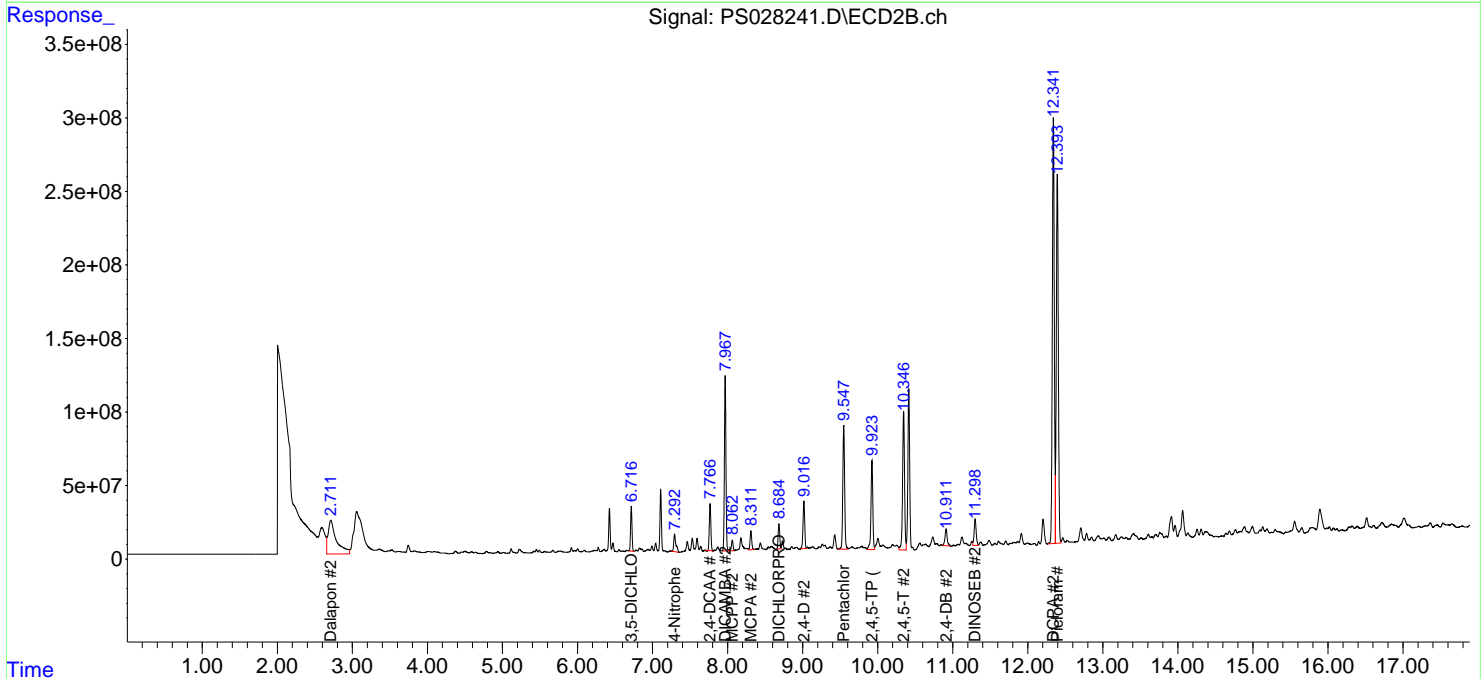
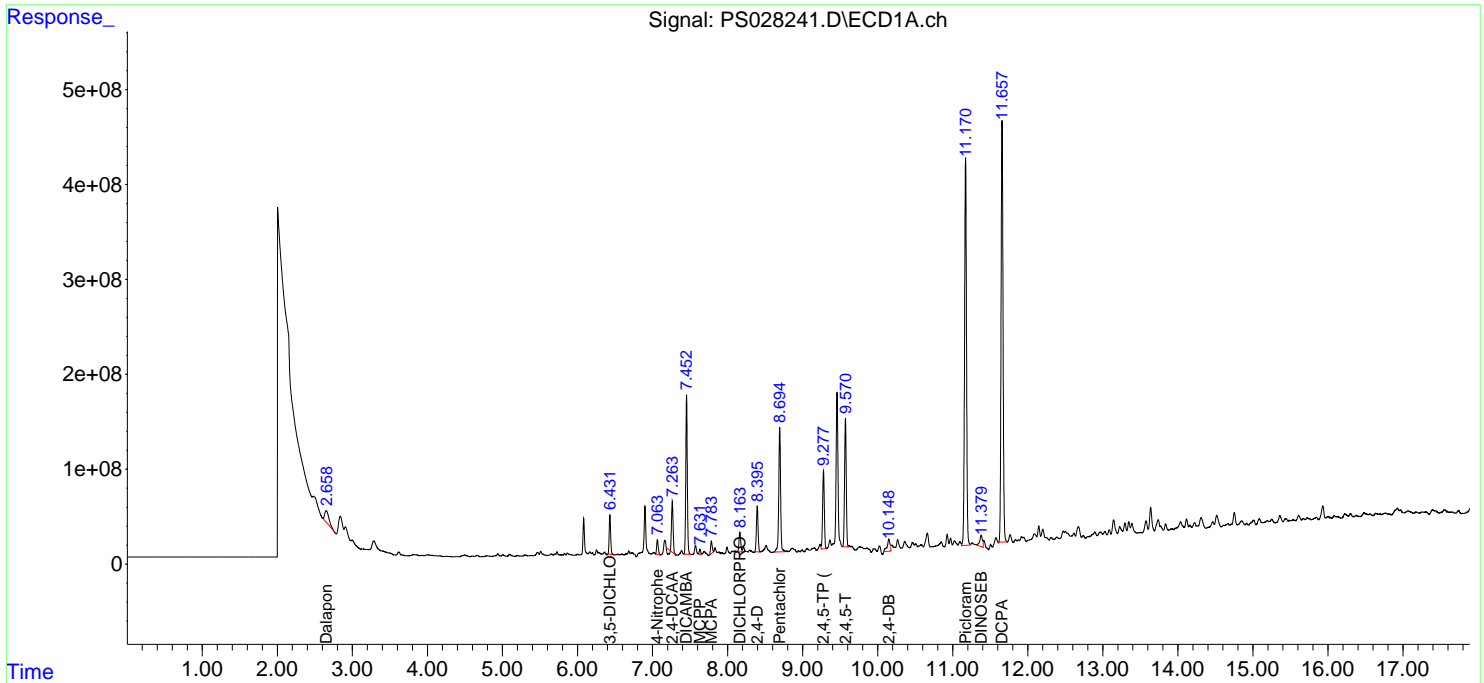
(f)=RT Delta > 1/2 Window (#)=Amounts differ by > 25% (m)=manual int.

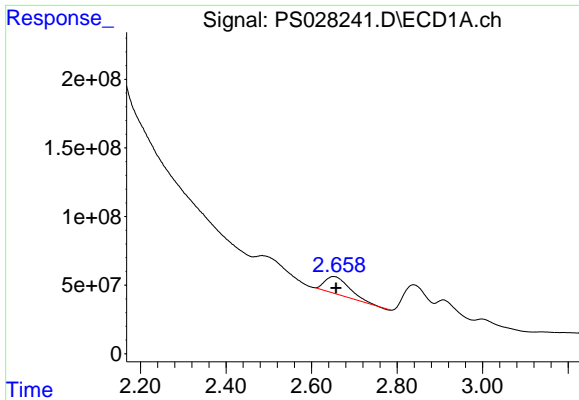
Data Path : Z:\pestpcbsrv\HPCHEM1\ECD\_S\Data\PS110524\  
 Data File : PS028241.D  
 Signal(s) : Signal #1: ECD1A.ch Signal #2: ECD2B.ch  
 Acq On : 06 Nov 2024 05:00  
 Operator : AR\AJ  
 Sample : P4602-44MS  
 Misc :  
 ALS Vial : 22 Sample Multiplier: 1

Instrument :  
 ECD\_S  
 ClientSampleId :  
 CC0R8MS

Integration File signal 1: autoint1.e  
 Integration File signal 2: autoint2.e  
 Quant Time: Nov 06 05:43:27 2024  
 Quant Method : Z:\pestpcbsrv\HPCHEM1\ECD\_S\Method\PS110524.M  
 Quant Title : 8080.M  
 QLast Update : Wed Nov 06 00:14:58 2024  
 Response via : Initial Calibration  
 Integrator: ChemStation

Volume Inj. : 1 µl  
 Signal #1 Phase : ZB-MR1 Signal #2 Phase: ZB-MR2  
 Signal #1 Info : 30M x 0.32mm x0.5 Signal #2 Info : 30M x 0.32mm x 0.25µm

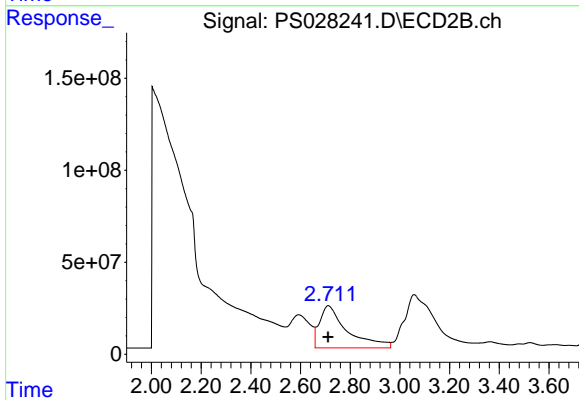




#1 Dalapon

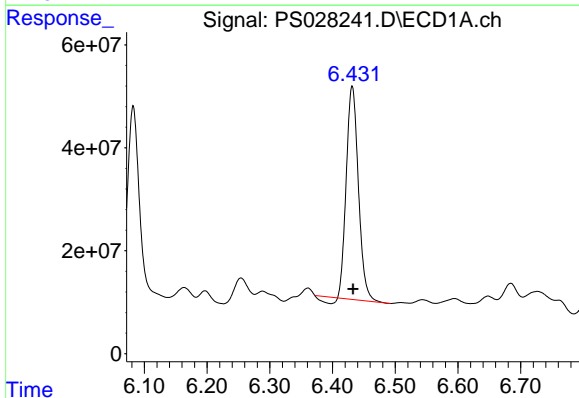
R.T.: 2.651 min  
 Delta R.T.: -0.006 min  
 Response: 495736555  
 Conc: 155.61 ng/ml

Instrument :  
 ECD\_S  
 ClientSampleId :  
 CC0R8MS



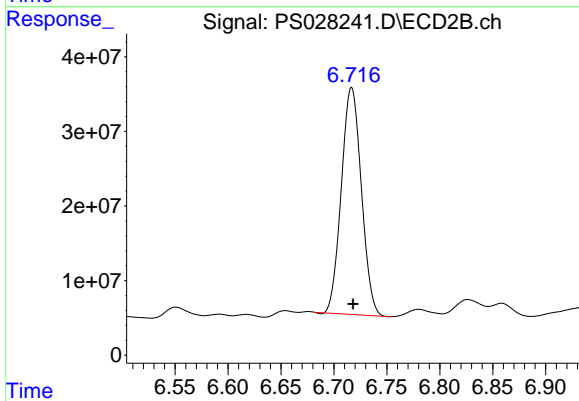
#1 Dalapon

R.T.: 2.711 min  
 Delta R.T.: 0.001 min  
 Response: 1760287216  
 Conc: 636.03 ng/ml



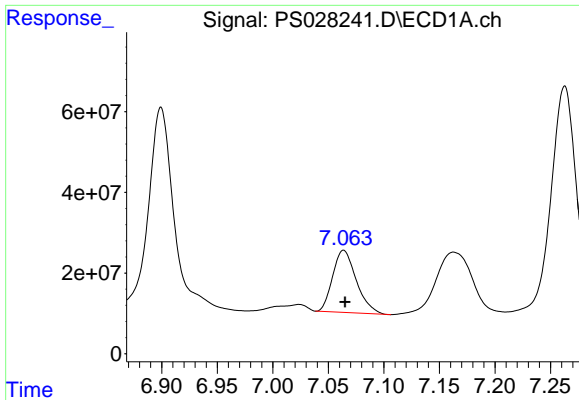
#2 3,5-DICHLOROBENZOIC ACID

R.T.: 6.431 min  
 Delta R.T.: -0.002 min  
 Response: 542591449  
 Conc: 193.60 ng/ml



#2 3,5-DICHLOROBENZOIC ACID

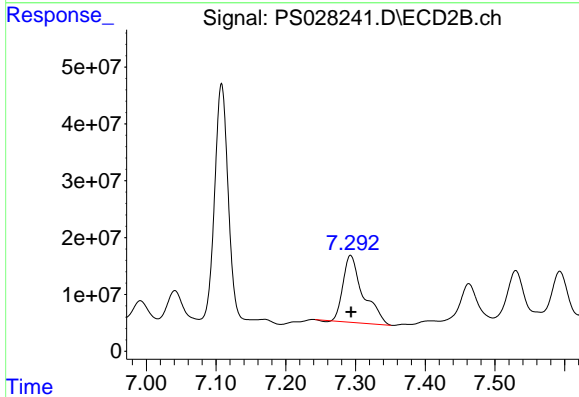
R.T.: 6.717 min  
 Delta R.T.: -0.001 min  
 Response: 400511051  
 Conc: 170.94 ng/ml



#3 4-Nitrophenol

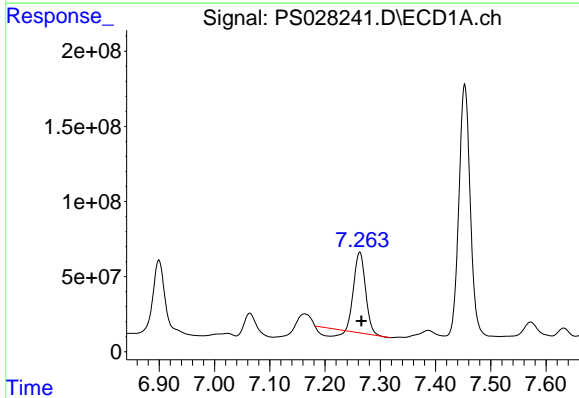
R.T.: 7.064 min  
 Delta R.T.: -0.001 min  
 Response: 228706020  
 Conc: 192.97 ng/ml

Instrument :  
 ECD\_S  
 ClientSampleId :  
 CC0R8MS



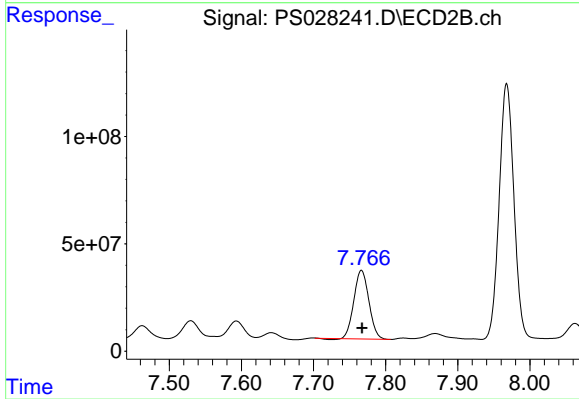
#3 4-Nitrophenol

R.T.: 7.293 min  
 Delta R.T.: 0.000 min  
 Response: 232439931  
 Conc: 219.58 ng/ml



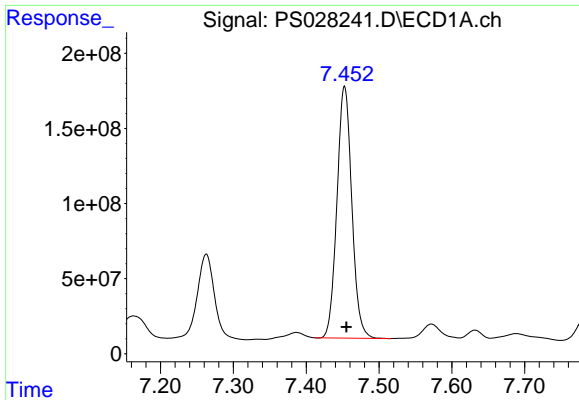
#4 2,4-DCAA

R.T.: 7.263 min  
 Delta R.T.: -0.003 min  
 Response: 678719964  
 Conc: 376.43 ng/ml



#4 2,4-DCAA

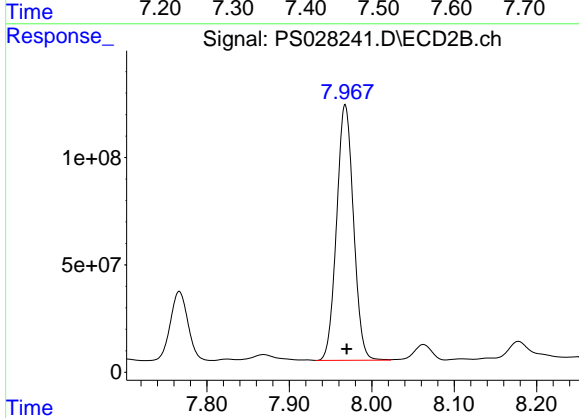
R.T.: 7.766 min  
 Delta R.T.: 0.000 min  
 Response: 460402950  
 Conc: 294.40 ng/ml



#5 DICAMBA

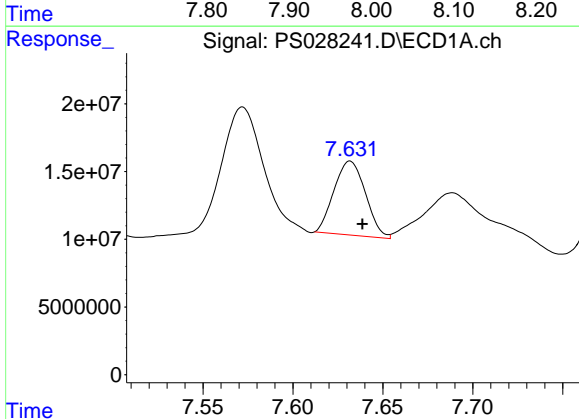
R.T.: 7.453 min  
 Delta R.T.: -0.002 min  
 Response: 2377130163  
 Conc: 300.96 ng/ml

Instrument :  
 ECD\_S  
 ClientSampleId :  
 CC0R8MS



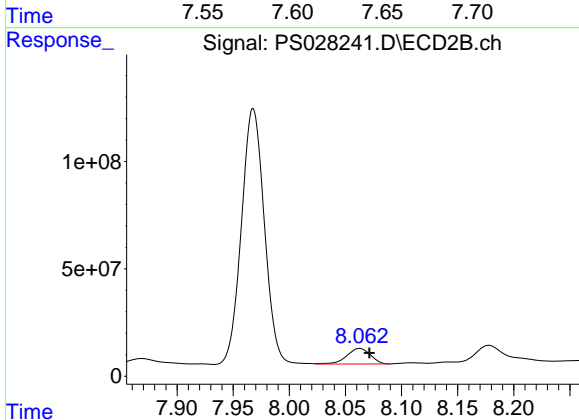
#5 DICAMBA

R.T.: 7.968 min  
 Delta R.T.: -0.002 min  
 Response: 1693073186  
 Conc: 234.73 ng/ml



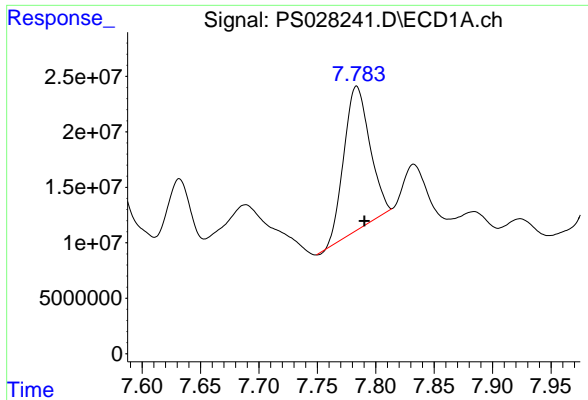
#6 MCPP

R.T.: 7.632 min  
 Delta R.T.: -0.007 min  
 Response: 66528602  
 Conc: 12.08 ug/ml



#6 MCPP

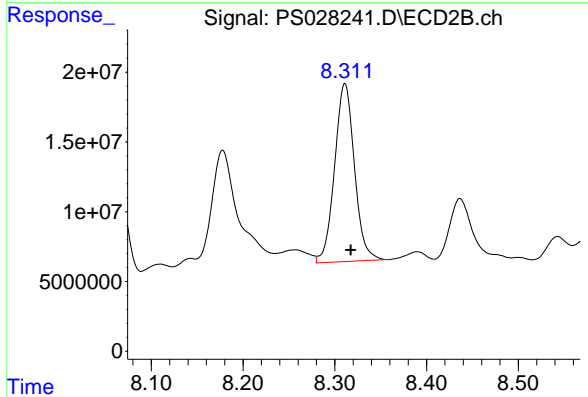
R.T.: 8.063 min  
 Delta R.T.: -0.009 min  
 Response: 106510132  
 Conc: 20.58 ug/ml



#7 MCPA

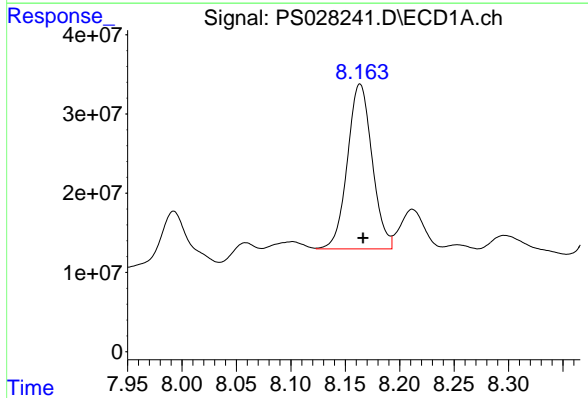
R.T.: 7.784 min  
 Delta R.T.: -0.006 min  
 Response: 198983626  
 Conc: 24.53 ug/ml

Instrument :  
 ECD\_S  
 ClientSampleId :  
 CC0R8MS



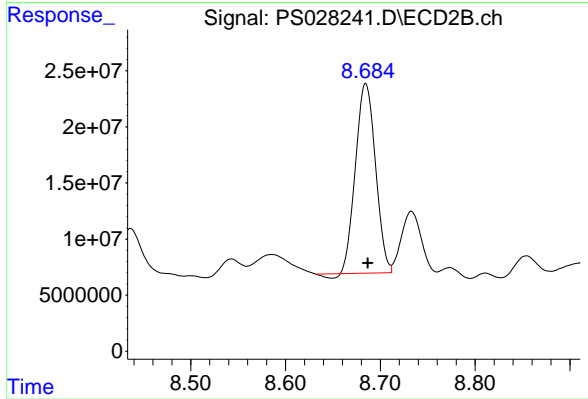
#7 MCPA

R.T.: 8.311 min  
 Delta R.T.: -0.006 min  
 Response: 192443627  
 Conc: 26.83 ug/ml



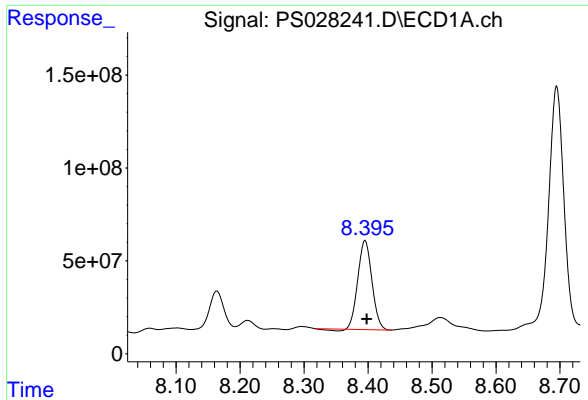
#8 DICHLORPROP

R.T.: 8.164 min  
 Delta R.T.: -0.003 min  
 Response: 328997180  
 Conc: 182.11 ng/ml



#8 DICHLORPROP

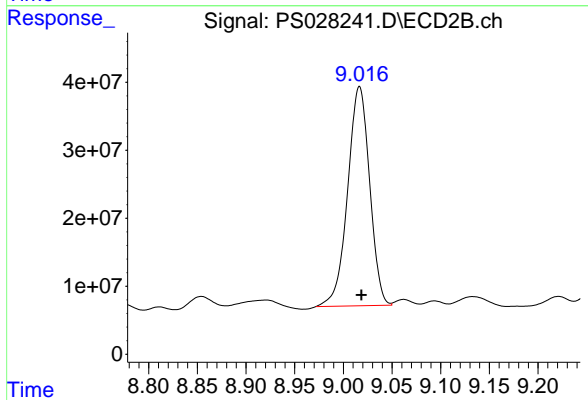
R.T.: 8.685 min  
 Delta R.T.: -0.002 min  
 Response: 245889897  
 Conc: 141.26 ng/ml



#9 2,4-D

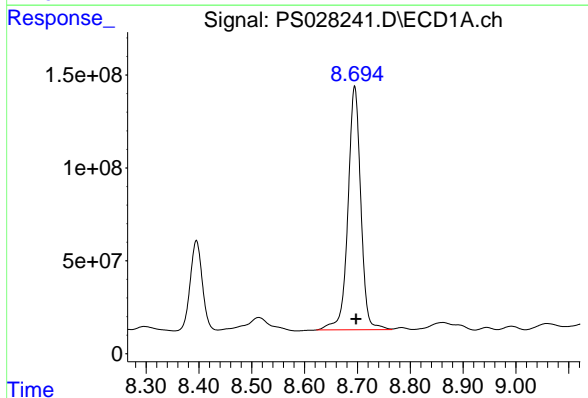
R.T.: 8.395 min  
 Delta R.T.: -0.003 min  
 Response: 731557334  
 Conc: 360.83 ng/ml

Instrument :  
 ECD\_S  
 ClientSampleId :  
 CC0R8MS



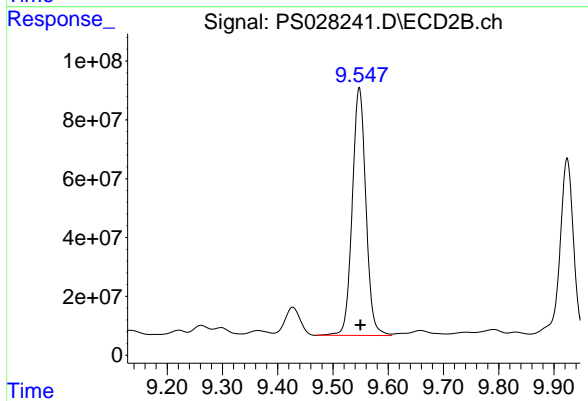
#9 2,4-D

R.T.: 9.017 min  
 Delta R.T.: -0.002 min  
 Response: 506842618  
 Conc: 259.93 ng/ml



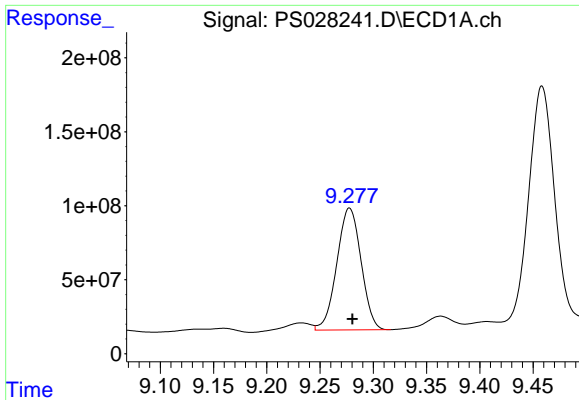
#10 Pentachlorophenol

R.T.: 8.695 min  
 Delta R.T.: -0.003 min  
 Response: 2220822237  
 Conc: 83.03 ng/ml



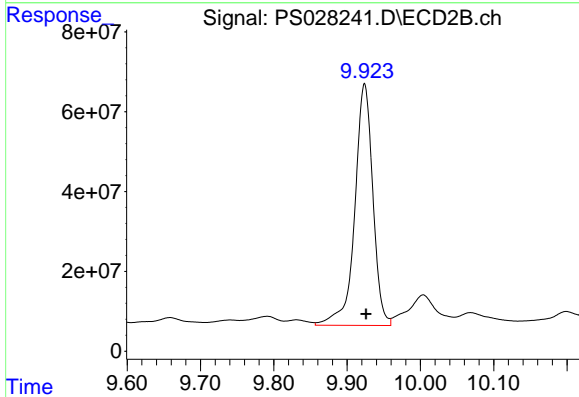
#10 Pentachlorophenol

R.T.: 9.548 min  
 Delta R.T.: -0.002 min  
 Response: 1444223526  
 Conc: 55.83 ng/ml

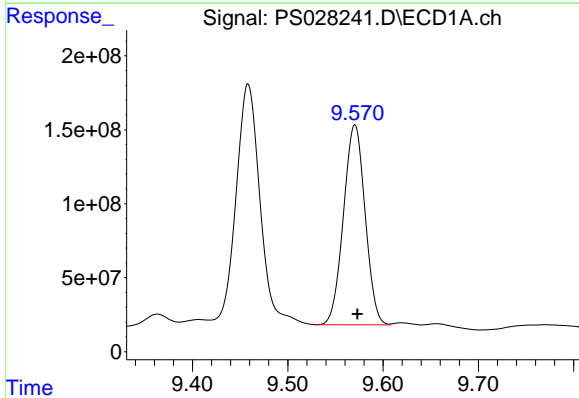


#11 2,4,5-TP (SILVEX)  
 R.T.: 9.278 min  
 Delta R.T.: -0.003 min  
 Response: 1304574909  
 Conc: 130.34 ng/ml

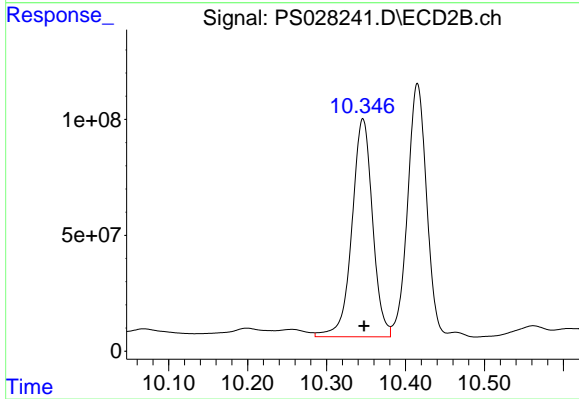
Instrument :  
 ECD\_S  
 ClientSampleId :  
 CC0R8MS



#11 2,4,5-TP (SILVEX)  
 R.T.: 9.924 min  
 Delta R.T.: -0.002 min  
 Response: 1037297339  
 Conc: 96.47 ng/ml

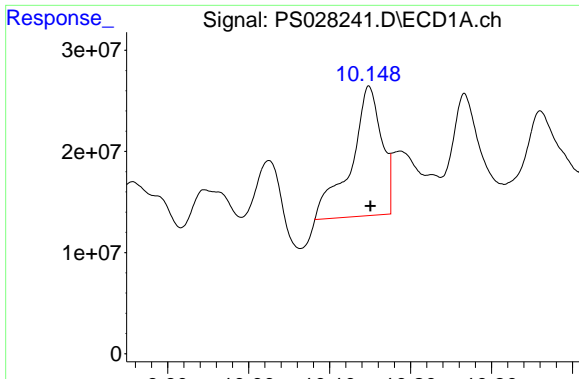


#12 2,4,5-T  
 R.T.: 9.570 min  
 Delta R.T.: -0.003 min  
 Response: 2131776361  
 Conc: 208.65 ng/ml



#12 2,4,5-T  
 R.T.: 10.346 min  
 Delta R.T.: -0.002 min  
 Response: 1708124963  
 Conc: 159.67 ng/ml

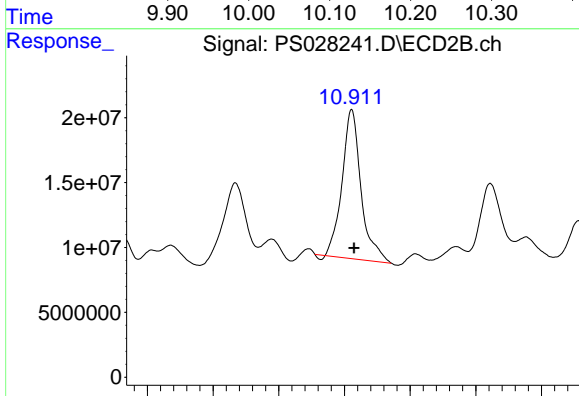




#13 2,4-DB

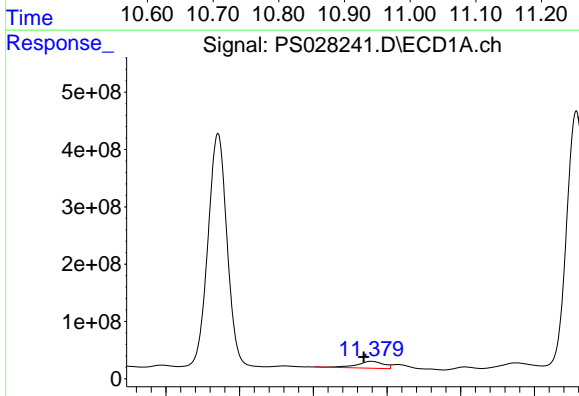
R.T.: 10.149 min  
 Delta R.T.: -0.002 min  
 Response: 336722966  
 Conc: 204.19 ng/ml

Instrument :  
 ECD\_S  
 ClientSampleId :  
 CC0R8MS



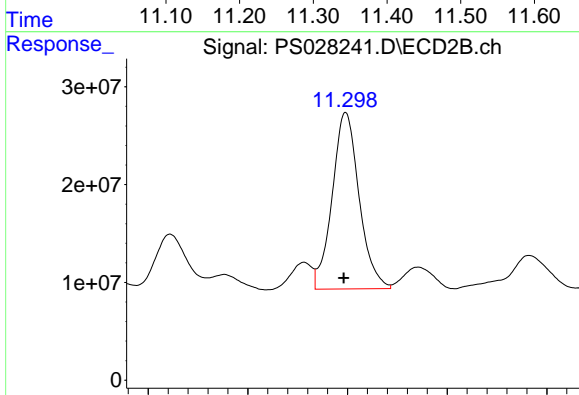
#13 2,4-DB

R.T.: 10.911 min  
 Delta R.T.: -0.004 min  
 Response: 229233799  
 Conc: 165.38 ng/ml



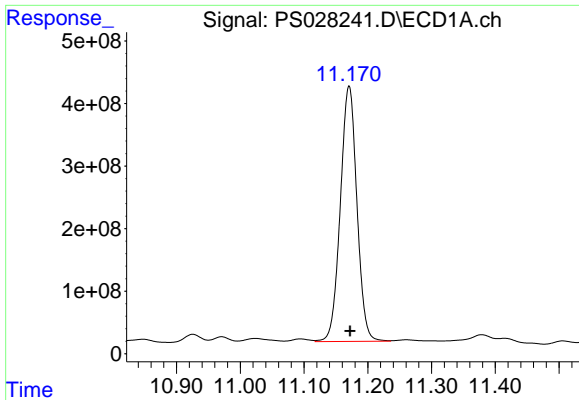
#14 DINOSEB

R.T.: 11.379 min  
 Delta R.T.: 0.010 min  
 Response: 300968729  
 Conc: 40.06 ng/ml



#14 DINOSEB

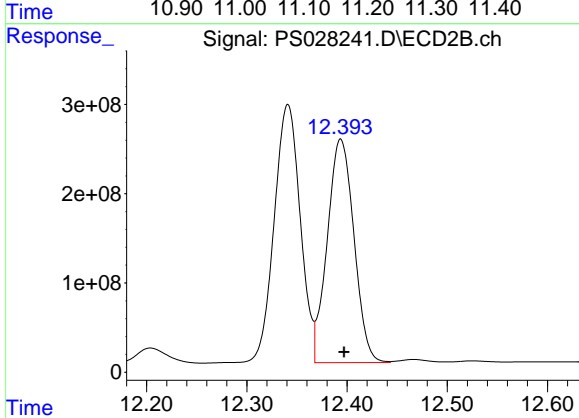
R.T.: 11.298 min  
 Delta R.T.: 0.002 min  
 Response: 339570431  
 Conc: 45.27 ng/ml



#15 Picloram

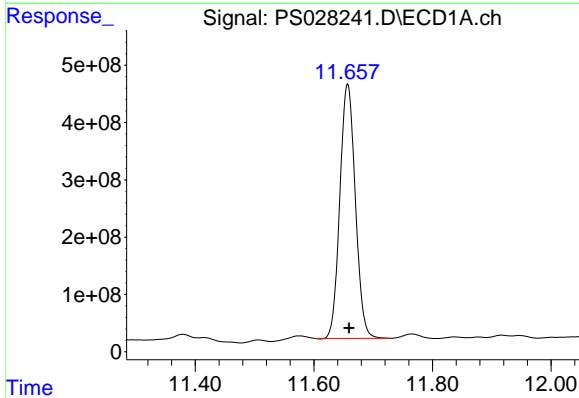
R.T.: 11.171 min  
 Delta R.T.: -0.002 min  
 Response: 7372240960  
 Conc: 422.49 ng/ml

Instrument :  
 ECD\_S  
 ClientSampleId :  
 CC0R8MS



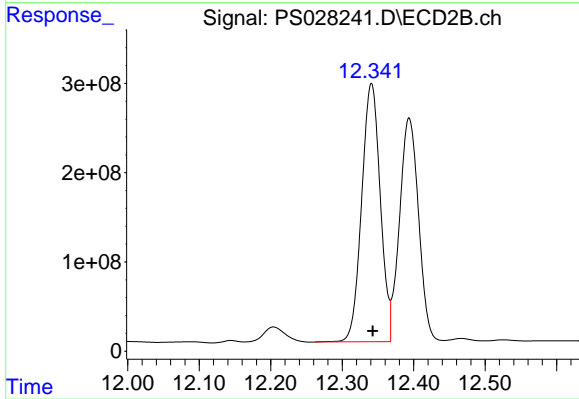
#15 Picloram

R.T.: 12.394 min  
 Delta R.T.: -0.003 min  
 Response: 4632332184  
 Conc: 282.15 ng/ml



#16 DCPA

R.T.: 11.657 min  
 Delta R.T.: -0.003 min  
 Response: 8047852852  
 Conc: 646.42 ng/ml



#16 DCPA

R.T.: 12.341 min  
 Delta R.T.: -0.002 min  
 Response: 5238134224  
 Conc: 415.60 ng/ml