

Data Path : Z:\pestpcbsrv\HPCHEM1\ECD_S\Data\PS110620\
 Data File : PS013145.D
 Signal(s) : Signal #1: ECD1A.ch Signal #2: ECD2B.ch
 Acq On : 06 Nov 2020 18:33
 Operator : DD\AJ
 Sample : L4625-02MS
 Misc :
 ALS Vial : 8 Sample Multiplier: 1

Instrument :
 ECD_S
ClientSampleId :
 CONTAINER-001-A-B-COMPMS

Integration File signal 1: autoint1.e
 Integration File signal 2: autoint2.e
 Quant Time: Nov 07 00:48:12 2020
 Quant Method : Z:\pestpcbsrv\HPCHEM1\ECD_S\Method\PS110220.M
 Quant Title : 8080.M
 QLast Update : Tue Nov 03 03:59:48 2020
 Response via : Initial Calibration
 Integrator: ChemStation

Volume Inj. : 2 µl
 Signal #1 Phase : Rtx-CLPesticides Signal #2 Phase: Rtx-CLPesticides2
 Signal #1 Info : 30M x 0.32mm x0.5 Signal #2 Info : 30M x 0.32mm x 0.25µm

	Compound	RT#1	RT#2	Resp#1	Resp#2	ng/ml	ng/ml

System Monitoring Compounds							
4) S	2,4-DCAA	7.209	6.913	275.0E6	145.9E6	307.605	375.038
Target Compounds							
1) T	Dalapon	3.030	2.624	524.1E6	350.4E6	495.377	661.192 #
2) T	3,5-DICHL...	6.425	6.066	595.6E6	271.2E6	483.569	440.913
3) T	4-Nitroph...	6.980f	0.000	8990035	0	21.079	N.D. #
5) T	DICAMBA	7.398	7.078	1716.1E6	823.6E6	480.525	496.162
6) T	MCPP	7.564	7.171	135.7E6	66061788	50.984	49.911
7) T	MCPA	7.712	7.385	435.3E6	268.2E6	114.010	126.058
8) T	DICHLORPROP	8.089	7.704	454.9E6	228.2E6	507.955	510.497
9) T	2,4-D	8.320	8.000	540.1E6	312.0E6	571.688	587.967
10) T	Pentachlo...	8.627	8.425	4718.0E6	2125.9E6	366.579	384.689
11) T	2,4,5-TP ...	9.176	8.784	2807.7E6	2195.1E6	546.727	947.188 #
12) T	2,4,5-T	9.462	9.166	2745.7E6	1252.6E6	518.825	565.523
13) T	2,4-DB	10.015	9.673	292.3E6	169.2E6	346.967	521.324 #
14) T	DINOSEB	11.169	10.002	1133.9E6	481.6E6	274.984	285.684
15) T	Picloram	11.001	10.994	2764.8E6	1559.0E6	420.460	431.921
16) T	DCPA	11.435	10.928	3341.4E6	1647.8E6	514.519	548.845

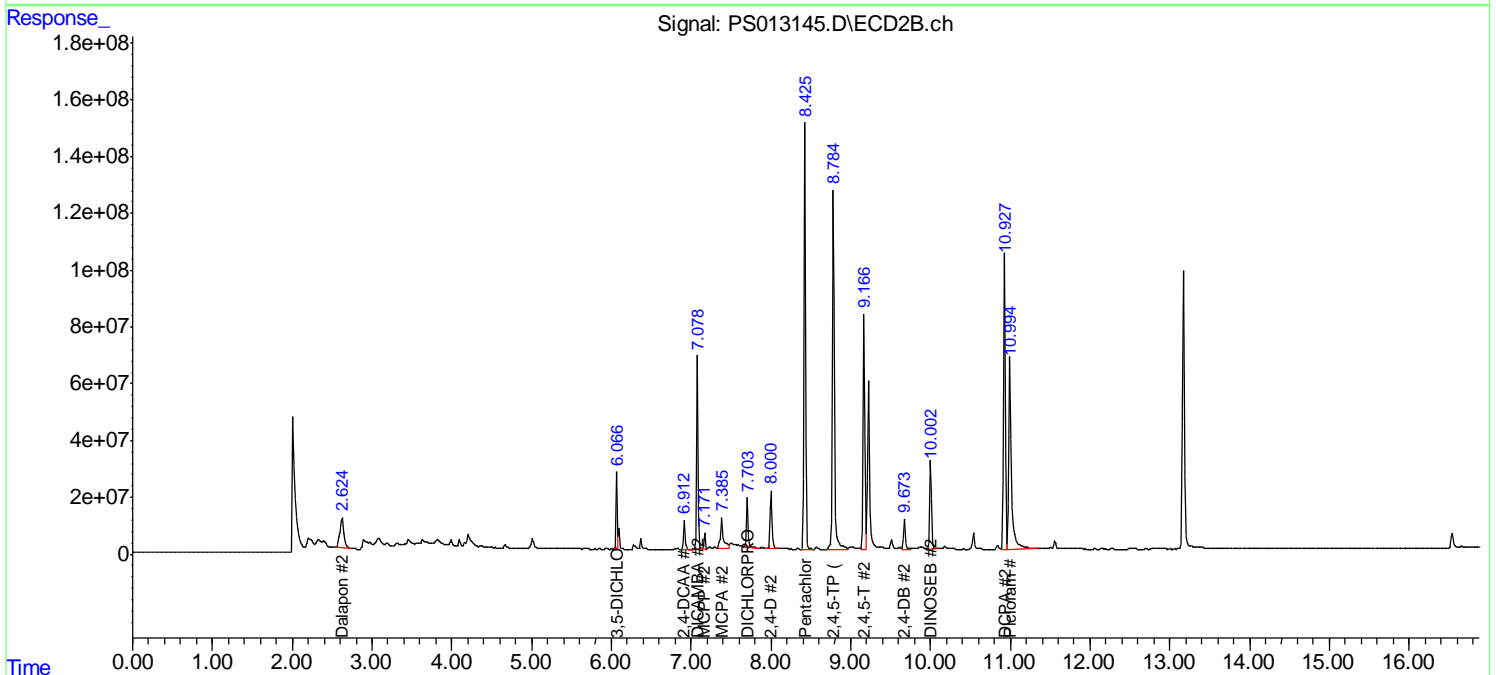
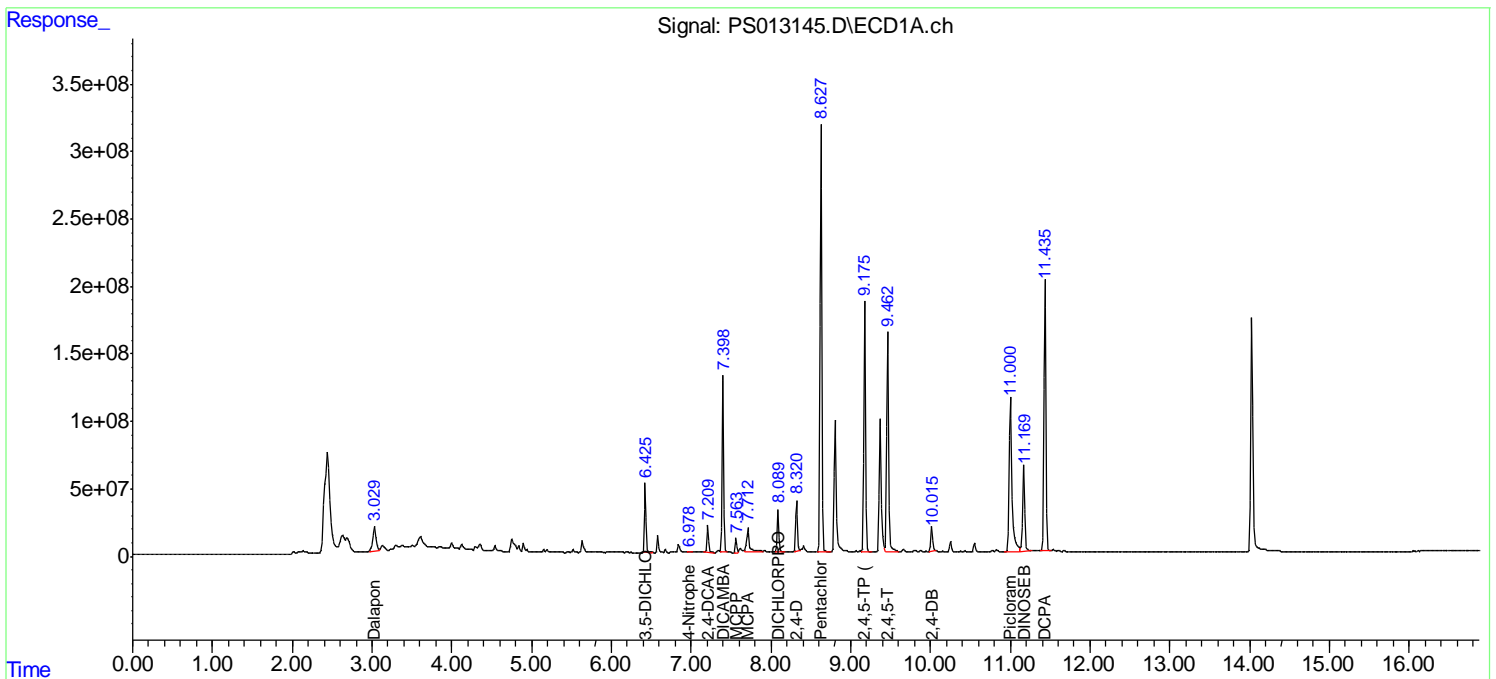
(f)=RT Delta > 1/2 Window (#)=Amounts differ by > 25% (m)=manual int.

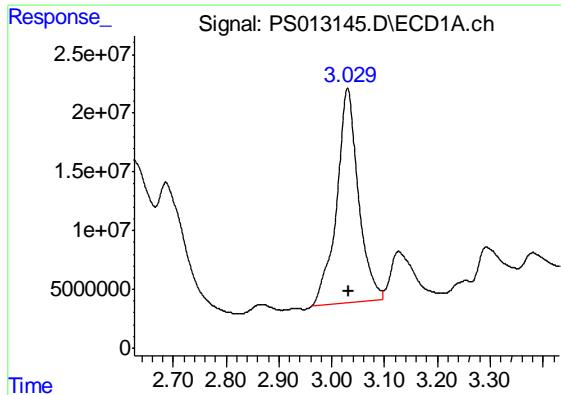
Data Path : Z:\pestpcbsrv\HPCHEM1\ECD_S\Data\PS110620\
 Data File : PS013145.D
 Signal(s) : Signal #1: ECD1A.ch Signal #2: ECD2B.ch
 Acq On : 06 Nov 2020 18:33
 Operator : DD\AJ
 Sample : L4625-02MS
 Misc :
 ALS Vial : 8 Sample Multiplier: 1

Instrument :
 ECD_S
 Client Sampled :
 CONTAINER-001-A-B-COMPMS

Integration File signal 1: autoint1.e
 Integration File signal 2: autoint2.e
 Quant Time: Nov 07 00:48:12 2020
 Quant Method : Z:\pestpcbsrv\HPCHEM1\ECD_S\Method\PS110220.M
 Quant Title : 8080.M
 QLast Update : Tue Nov 03 03:59:48 2020
 Response via : Initial Calibration
 Integrator: ChemStation

Volume Inj. : 2 µl
 Signal #1 Phase : Rtx-CLPesticides Signal #2 Phase: Rtx-CLPesticides2
 Signal #1 Info : 30M x 0.32mm x0.5 Signal #2 Info : 30M x 0.32mm x 0.25µm

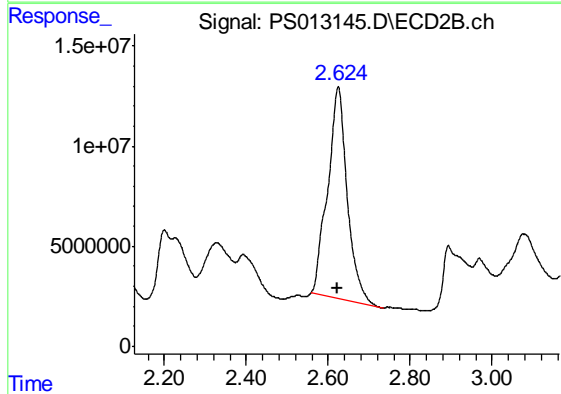




#1 Dalapon

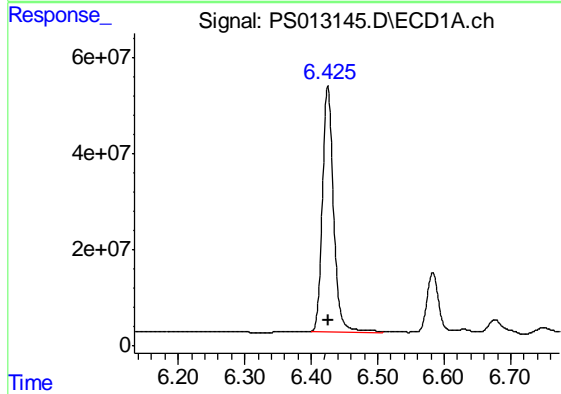
R.T.: 3.030 min
 Delta R.T.: -0.002 min
 Response: 524114201
 Conc: 495.38 ng/ml

Instrument :
 ECD_S
 ClientSampleId :
 CONTAINER-001-A-B-COMPMS



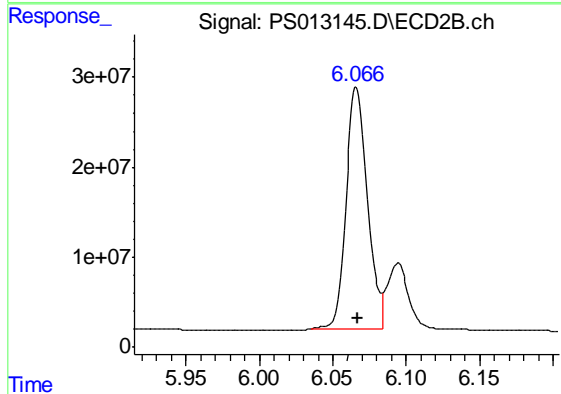
#1 Dalapon

R.T.: 2.624 min
 Delta R.T.: 0.001 min
 Response: 350415407
 Conc: 661.19 ng/ml



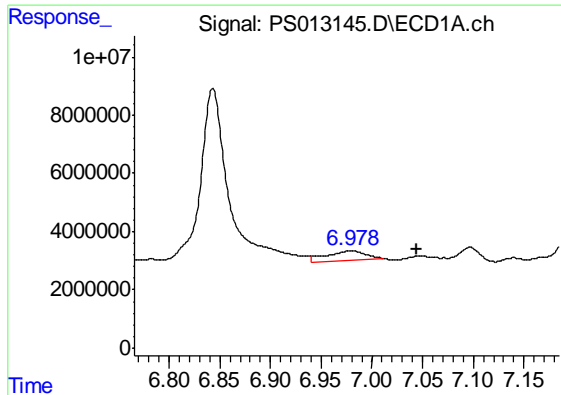
#2 3,5-DICHLOROBENZOIC ACID

R.T.: 6.425 min
 Delta R.T.: -0.002 min
 Response: 595553033
 Conc: 483.57 ng/ml



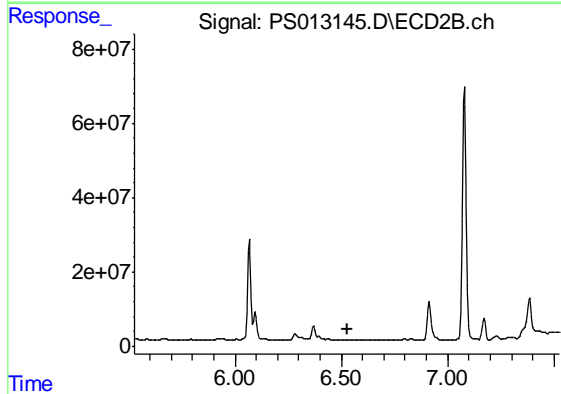
#2 3,5-DICHLOROBENZOIC ACID

R.T.: 6.066 min
 Delta R.T.: -0.001 min
 Response: 271237250
 Conc: 440.91 ng/ml

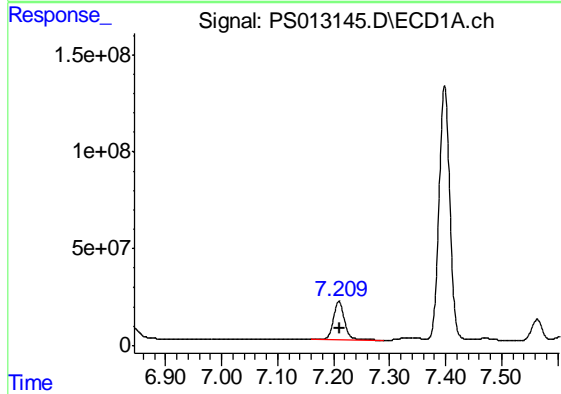


#3 4-Nitrophenol
 R.T.: 6.980 min
 Delta R.T.: -0.065 min
 Response: 8990035
 Conc: 21.08 ng/ml

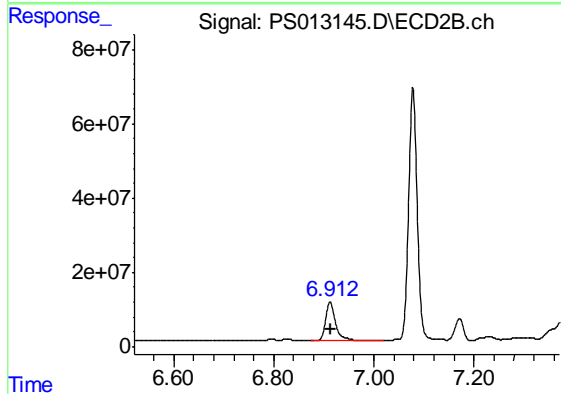
Instrument :
 ECD_S
 ClientSampleId :
 CONTAINER-001-A-B-COMPMS



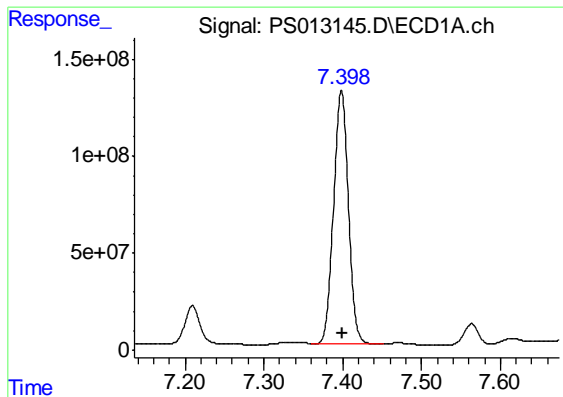
#3 4-Nitrophenol
 R.T.: 0.000 min
 Exp R.T. : 6.527 min
 Response: 0
 Conc: N.D.



#4 2,4-DCAA
 R.T.: 7.209 min
 Delta R.T.: -0.001 min
 Response: 274977296
 Conc: 307.61 ng/ml

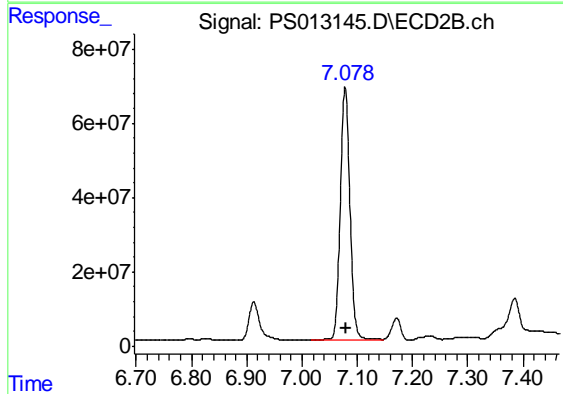


#4 2,4-DCAA
 R.T.: 6.913 min
 Delta R.T.: -0.001 min
 Response: 145923235
 Conc: 375.04 ng/ml

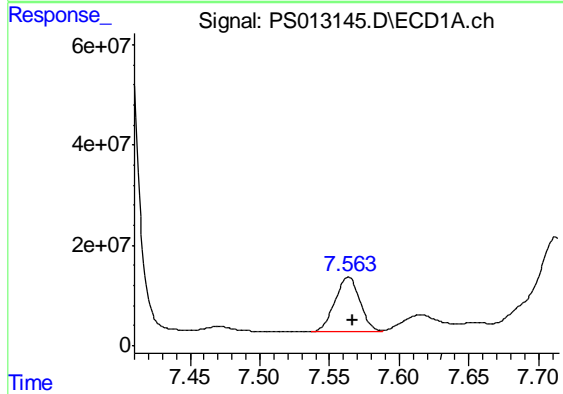


#5 DICAMBA
 R.T.: 7.398 min
 Delta R.T.: -0.002 min
 Response: 1716068304
 Conc: 480.52 ng/ml

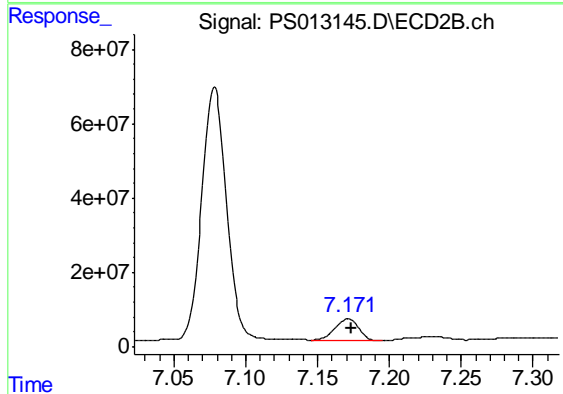
Instrument :
 ECD_S
 ClientSampleId :
 CONTAINER-001-A-B-COMPMS



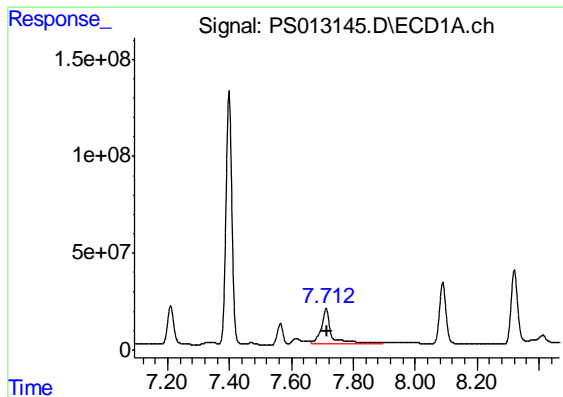
#5 DICAMBA
 R.T.: 7.078 min
 Delta R.T.: -0.002 min
 Response: 823639412
 Conc: 496.16 ng/ml



#6 MCPP
 R.T.: 7.564 min
 Delta R.T.: -0.003 min
 Response: 135725255
 Conc: 50.98 ug/ml



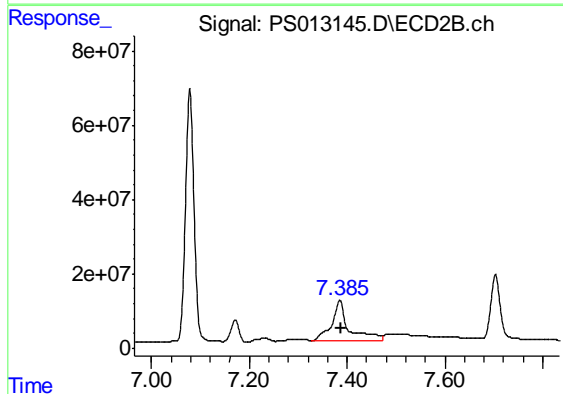
#6 MCPP
 R.T.: 7.171 min
 Delta R.T.: -0.002 min
 Response: 66061788
 Conc: 49.91 ug/ml



#7 MCPA

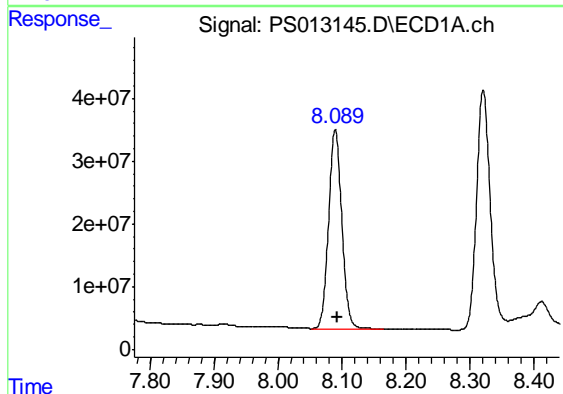
R.T.: 7.712 min
 Delta R.T.: -0.004 min
 Response: 435340644
 Conc: 114.01 ug/ml

Instrument :
 ECD_S
 ClientSampleId :
 CONTAINER-001-A-B-COMPMS



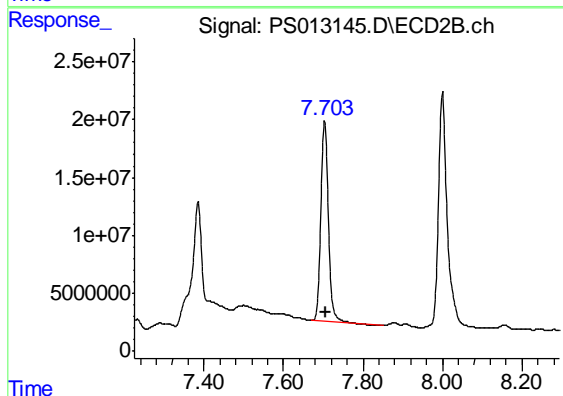
#7 MCPA

R.T.: 7.385 min
 Delta R.T.: -0.004 min
 Response: 268207381
 Conc: 126.06 ug/ml



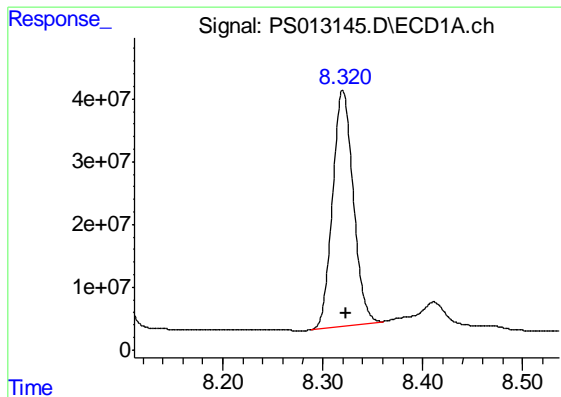
#8 DICHLORPROP

R.T.: 8.089 min
 Delta R.T.: -0.003 min
 Response: 454871466
 Conc: 507.96 ng/ml



#8 DICHLORPROP

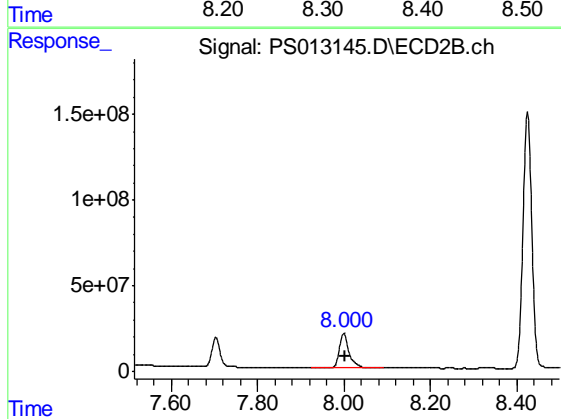
R.T.: 7.704 min
 Delta R.T.: -0.002 min
 Response: 228171116
 Conc: 510.50 ng/ml



#9 2,4-D

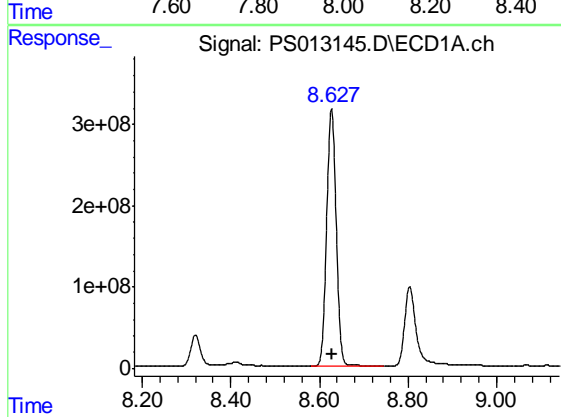
R.T.: 8.320 min
 Delta R.T.: -0.003 min
 Response: 540098248
 Conc: 571.69 ng/ml

Instrument :
 ECD_S
 ClientSampleId :
 CONTAINER-001-A-B-COMPMS



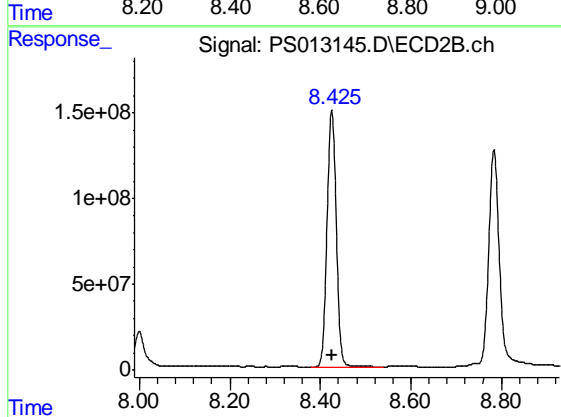
#9 2,4-D

R.T.: 8.000 min
 Delta R.T.: -0.004 min
 Response: 312036997
 Conc: 587.97 ng/ml



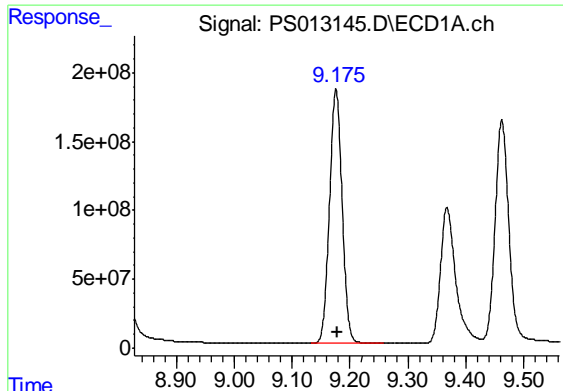
#10 Pentachlorophenol

R.T.: 8.627 min
 Delta R.T.: -0.002 min
 Response: 4717952181
 Conc: 366.58 ng/ml



#10 Pentachlorophenol

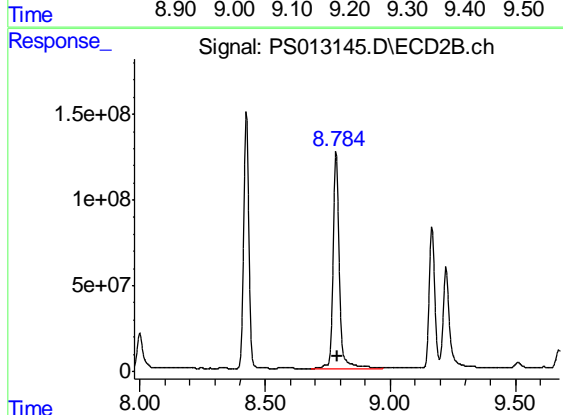
R.T.: 8.425 min
 Delta R.T.: -0.002 min
 Response: 2125883825
 Conc: 384.69 ng/ml



#11 2,4,5-TP (SILVEX)

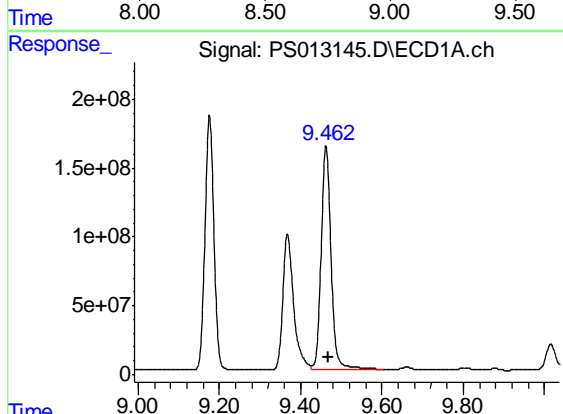
R.T.: 9.176 min
 Delta R.T.: -0.003 min
 Response: 2807738680
 Conc: 546.73 ng/ml

Instrument :
 ECD_S
 ClientSampled :
 CONTAINER-001-A-B-COMPMS



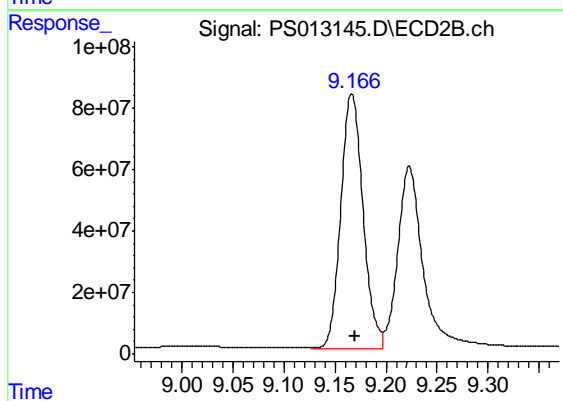
#11 2,4,5-TP (SILVEX)

R.T.: 8.784 min
 Delta R.T.: -0.006 min
 Response: 2195083058
 Conc: 947.19 ng/ml



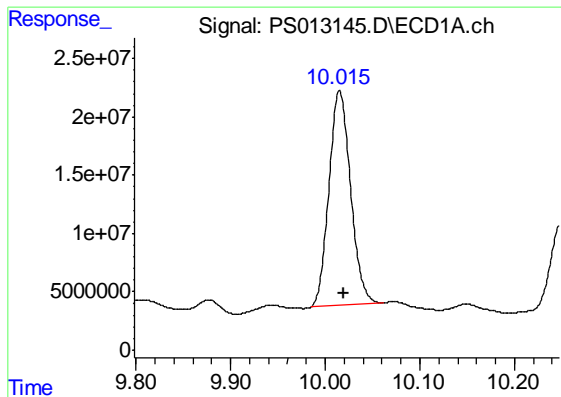
#12 2,4,5-T

R.T.: 9.462 min
 Delta R.T.: -0.004 min
 Response: 2745681094
 Conc: 518.82 ng/ml



#12 2,4,5-T

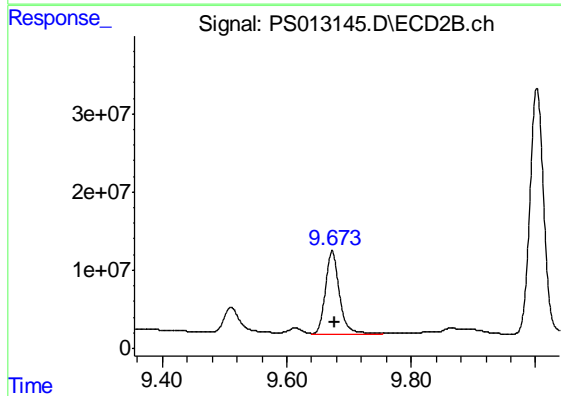
R.T.: 9.166 min
 Delta R.T.: -0.004 min
 Response: 1252628810
 Conc: 565.52 ng/ml



#13 2,4-DB

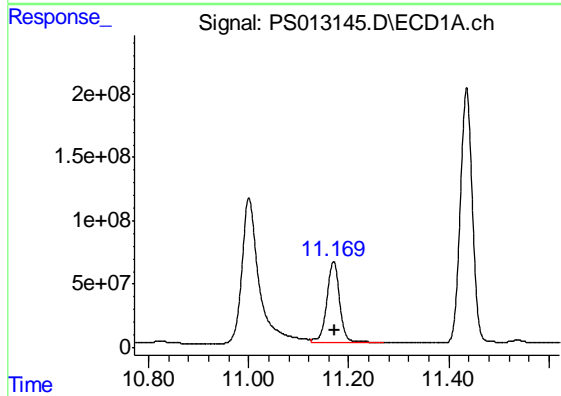
R.T.: 10.015 min
Delta R.T.: -0.005 min
Response: 292301157
Conc: 346.97 ng/ml

Instrument :
ECD_S
ClientSampleId :
CONTAINER-001-A-B-COMPMS



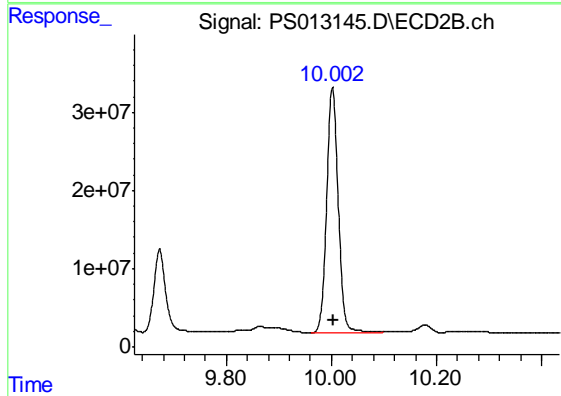
#13 2,4-DB

R.T.: 9.673 min
Delta R.T.: -0.004 min
Response: 169192356
Conc: 521.32 ng/ml



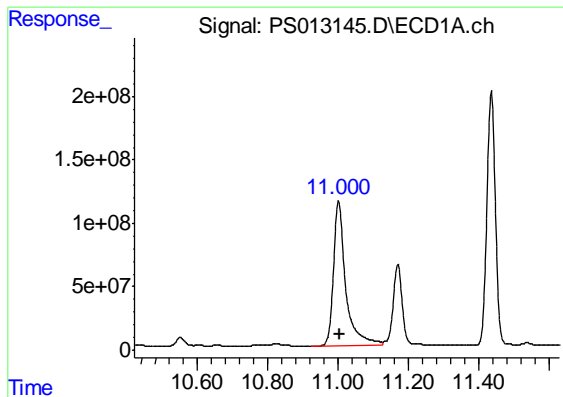
#14 DINOSEB

R.T.: 11.169 min
Delta R.T.: -0.003 min
Response: 1133901234
Conc: 274.98 ng/ml



#14 DINOSEB

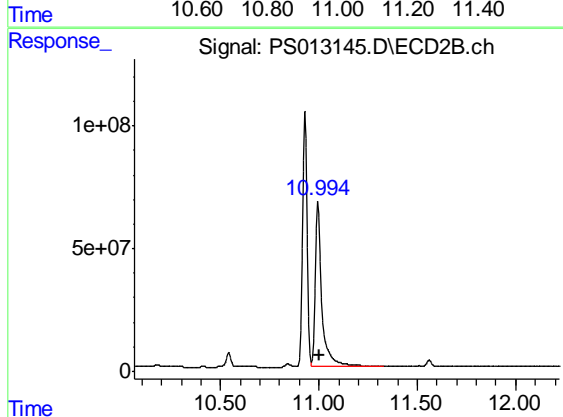
R.T.: 10.002 min
Delta R.T.: -0.003 min
Response: 481633235
Conc: 285.68 ng/ml



#15 Picloram

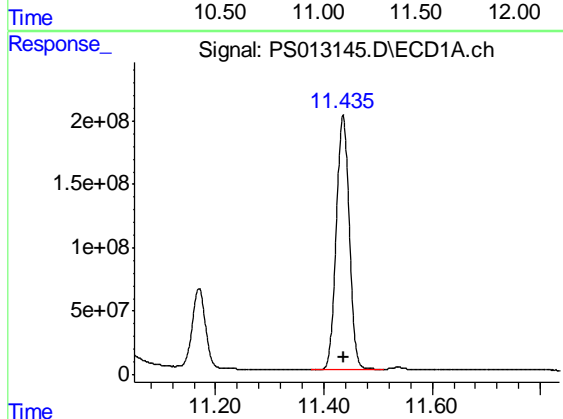
R.T.: 11.001 min
Delta R.T.: -0.005 min
Response: 2764825657
Conc: 420.46 ng/ml

Instrument :
ECD_S
ClientSampleId :
CONTAINER-001-A-B-COMPMS



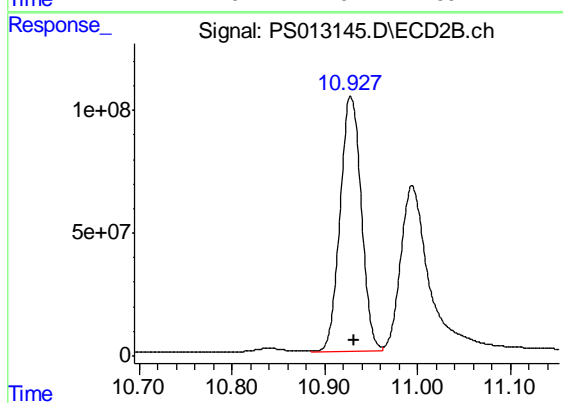
#15 Picloram

R.T.: 10.994 min
Delta R.T.: -0.005 min
Response: 1559003949
Conc: 431.92 ng/ml



#16 DCPA

R.T.: 11.435 min
Delta R.T.: -0.002 min
Response: 3341353832
Conc: 514.52 ng/ml



#16 DCPA

R.T.: 10.928 min
Delta R.T.: -0.004 min
Response: 1647774516
Conc: 548.85 ng/ml