

Data Path : Z:\pestpcbsrv\HPCHEM1\ECD_S\Data\PS110620\
 Data File : PS013154.D
 Signal(s) : Signal #1: ECD1A.ch Signal #2: ECD2B.ch
 Acq On : 06 Nov 2020 22:00
 Operator : DD\AJ
 Sample : L4657-07
 Misc :
 ALS Vial : 15 Sample Multiplier: 1

Instrument :
 ECD_S
 ClientSampleId :
 PAV-B49-110520-10-18

Integration File signal 1: autoint1.e
 Integration File signal 2: autoint2.e
 Quant Time: Nov 07 00:50:48 2020
 Quant Method : Z:\pestpcbsrv\HPCHEM1\ECD_S\Method\PS110220.M
 Quant Title : 8080.M
 QLast Update : Tue Nov 03 03:59:48 2020
 Response via : Initial Calibration
 Integrator: ChemStation

Volume Inj. : 2 µl
 Signal #1 Phase : Rtx-CLPesticides Signal #2 Phase: Rtx-CLPesticides2
 Signal #1 Info : 30M x 0.32mm x0.5 Signal #2 Info : 30M x 0.32mm x 0.25µm

| Compound | RT#1 | RT#2 | Resp#1 | Resp#2 | ng/ml | ng/ml |
|-----------------------------|--------|--------|----------|----------|---------|-----------|
| ----- | | | | | | |
| System Monitoring Compounds | | | | | | |
| 4) S 2,4-DCAA | 7.211 | 6.914 | 330.0E6 | 174.2E6 | 369.150 | 447.790 |
| Target Compounds | | | | | | |
| 1) T Dalapon | 2.993 | 2.591 | 88996942 | 173.8E6 | 84.117 | 327.949 # |
| 2) T 3,5-DICHL... | 0.000 | 6.096 | 0 | 68467458 | N.D. | 111.298 |
| 3) T 4-Nitroph... | 7.098f | 0.000 | 6861297 | 0 | 16.088 | N.D. # |
| 5) T DICAMBA | 7.387 | 7.047 | 11073741 | 6931685 | 3.101 | 4.176 # |
| 7) T MCPA | 7.715 | 0.000 | 119.9E6 | 0 | 31.392 | N.D. # |
| 8) T DICHLORPROP | 0.000 | 7.750f | 0 | 5174303 | N.D. | 11.577 |
| 9) T 2,4-D | 0.000 | 7.971 | 0 | 592434 | N.D. | 1.116 |
| 10) T Pentachlo... | 8.683f | 0.000 | 9110953 | 0 | <MDL | N.D. # |
| 11) T 2,4,5-TP ... | 0.000 | 8.740f | 0 | 41774001 | N.D. | 18.026 |
| 12) T 2,4,5-T | 9.397f | 0.000 | 54612798 | 0 | 10.320 | N.D. # |
| 14) T DINOSEB | 11.143 | 0.000 | 11012596 | 0 | 2.671 | N.D. # |
| 15) T Picloram | 10.977 | 0.000 | 16844968 | 0 | 2.562 | N.D. # |
| ----- | | | | | | |

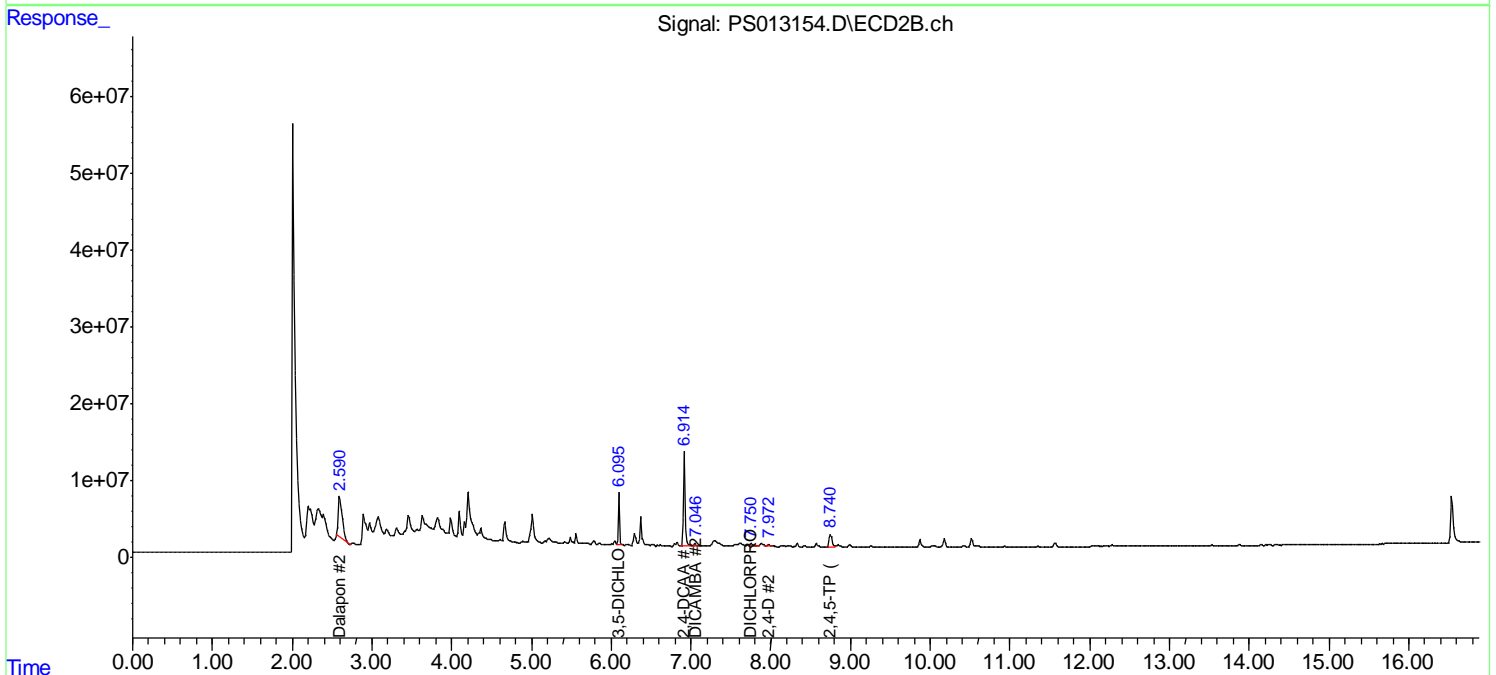
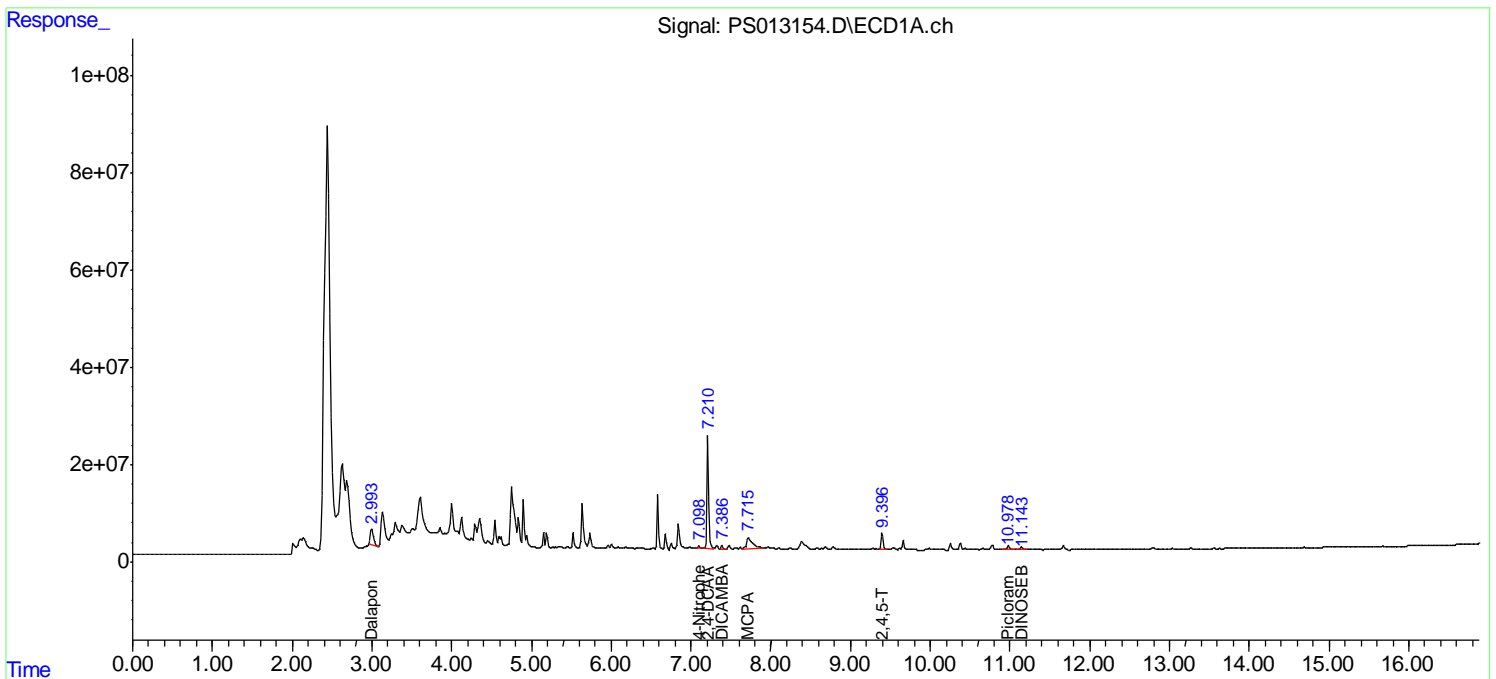
(f)=RT Delta > 1/2 Window (#)=Amounts differ by > 25% (m)=manual int.

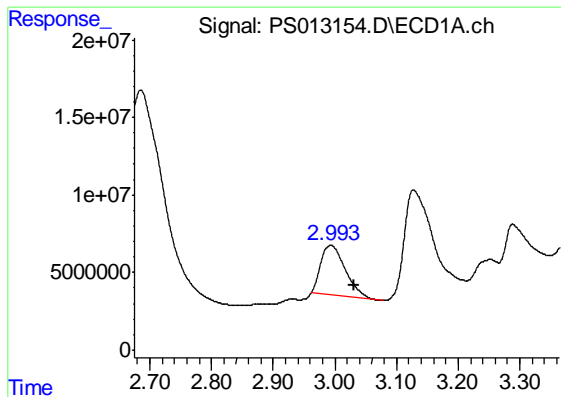
Data Path : Z:\pestpcbsrv\HPCHEM1\ECD_S\Data\PS110620\
 Data File : PS013154.D
 Signal(s) : Signal #1: ECD1A.ch Signal #2: ECD2B.ch
 Acq On : 06 Nov 2020 22:00
 Operator : DD\AJ
 Sample : L4657-07
 Misc :
 ALS Vial : 15 Sample Multiplier: 1

Instrument :
 ECD_S
Client Sampled :
 PAV-B49-110520-10-18

Integration File signal 1: autoint1.e
 Integration File signal 2: autoint2.e
 Quant Time: Nov 07 00:50:48 2020
 Quant Method : Z:\pestpcbsrv\HPCHEM1\ECD_S\Method\PS110220.M
 Quant Title : 8080.M
 QLast Update : Tue Nov 03 03:59:48 2020
 Response via : Initial Calibration
 Integrator: ChemStation

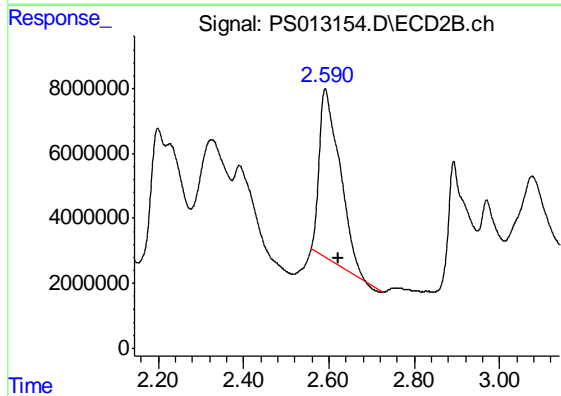
Volume Inj. : 2 µl
 Signal #1 Phase : Rtx-CLPesticides Signal #2 Phase: Rtx-CLPesticides2
 Signal #1 Info : 30M x 0.32mm x0.5 Signal #2 Info : 30M x 0.32mm x 0.25µm



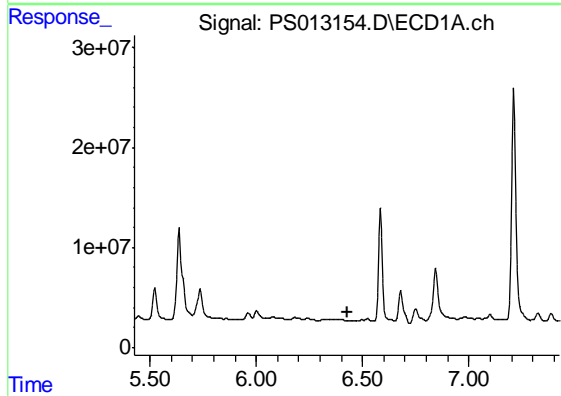


#1 Dalapon
 R.T.: 2.993 min
 Delta R.T.: -0.039 min
 Response: 88996942
 Conc: 84.12 ng/ml

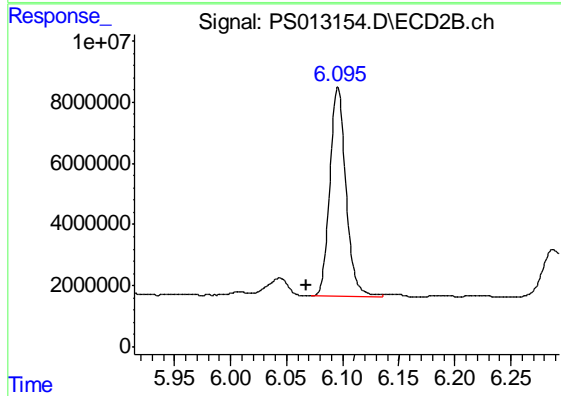
Instrument :
 ECD_S
 ClientSampleId :
 PAV-B49-110520-10-18



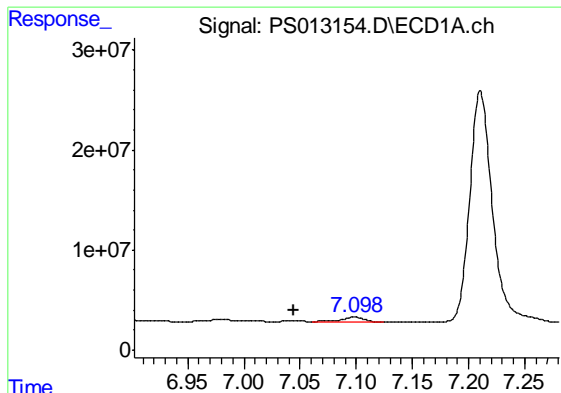
#1 Dalapon
 R.T.: 2.591 min
 Delta R.T.: -0.032 min
 Response: 173805112
 Conc: 327.95 ng/ml



#2 3,5-DICHLOROBENZOIC ACID
 R.T.: 0.000 min
 Exp R.T. : 6.427 min
 Response: 0
 Conc: N.D.

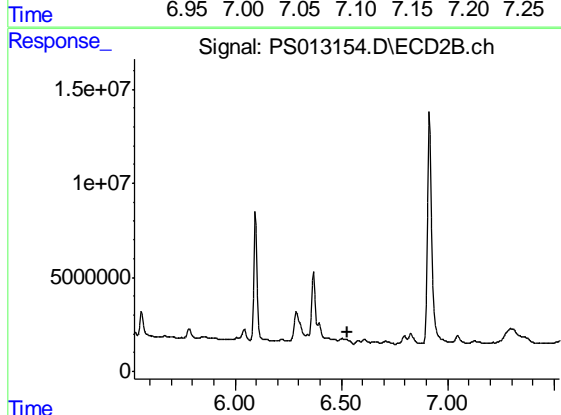


#2 3,5-DICHLOROBENZOIC ACID
 R.T.: 6.096 min
 Delta R.T.: 0.028 min
 Response: 68467458
 Conc: 111.30 ng/ml

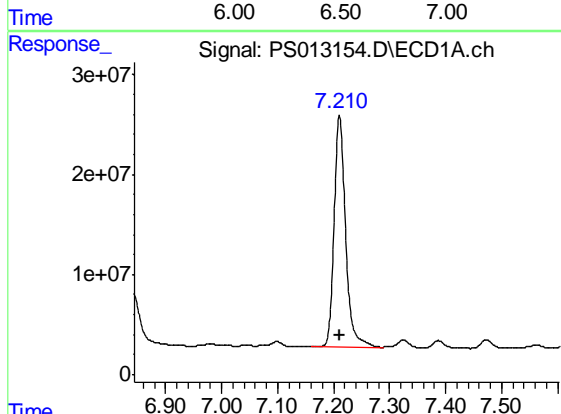


#3 4-Nitrophenol
R.T.: 7.098 min
Delta R.T.: 0.053 min
Response: 6861297
Conc: 16.09 ng/ml

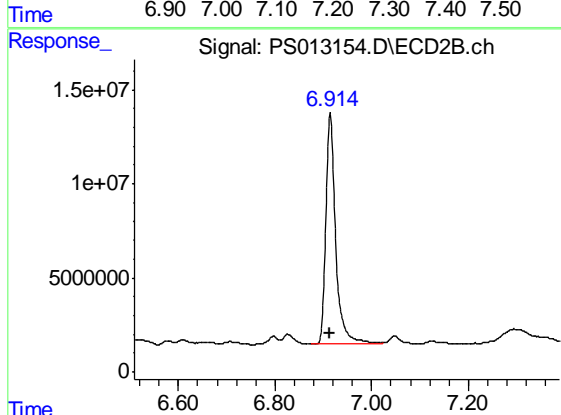
Instrument :
ECD_S
ClientSampleId :
PAV-B49-110520-10-18



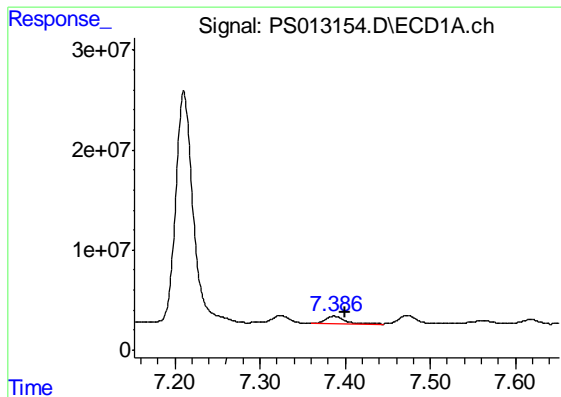
#3 4-Nitrophenol
R.T.: 0.000 min
Exp R.T. : 6.527 min
Response: 0
Conc: N.D.



#4 2,4-DCAA
R.T.: 7.211 min
Delta R.T.: 0.000 min
Response: 329993800
Conc: 369.15 ng/ml

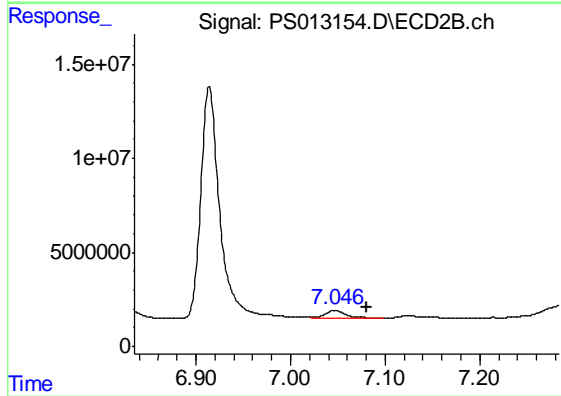


#4 2,4-DCAA
R.T.: 6.914 min
Delta R.T.: 0.000 min
Response: 174230277
Conc: 447.79 ng/ml

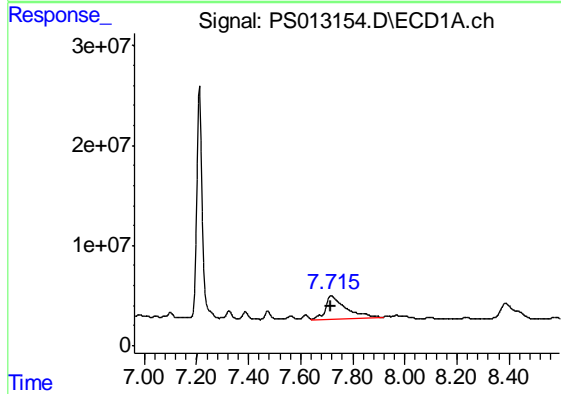


#5 DICAMBA
 R.T.: 7.387 min
 Delta R.T.: -0.013 min
 Response: 11073741
 Conc: 3.10 ng/ml

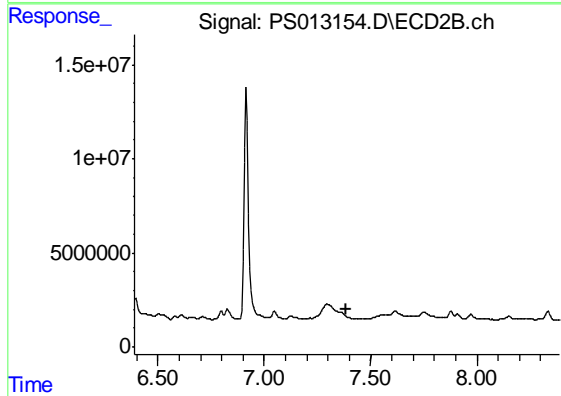
Instrument :
 ECD_S
 ClientSampleId :
 PAV-B49-110520-10-18



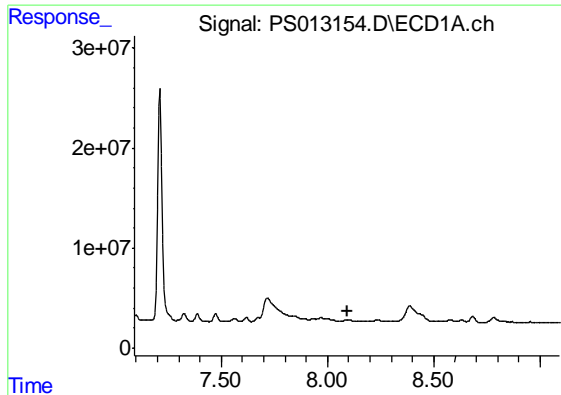
#5 DICAMBA
 R.T.: 7.047 min
 Delta R.T.: -0.033 min
 Response: 6931685
 Conc: 4.18 ng/ml



#7 MCPA
 R.T.: 7.715 min
 Delta R.T.: 0.000 min
 Response: 119867752
 Conc: 31.39 ug/ml



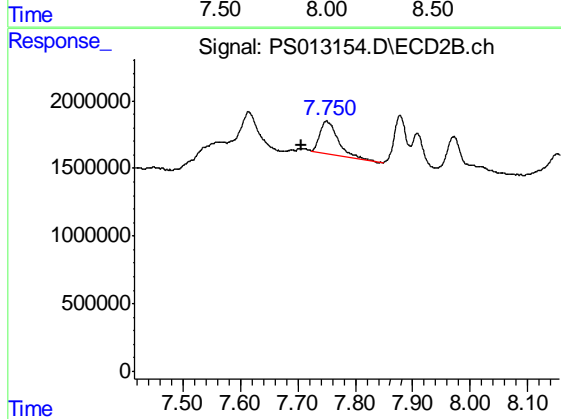
#7 MCPA
 R.T.: 0.000 min
 Exp R.T. : 7.389 min
 Response: 0
 Conc: N.D.



#8 DICHLORPROP

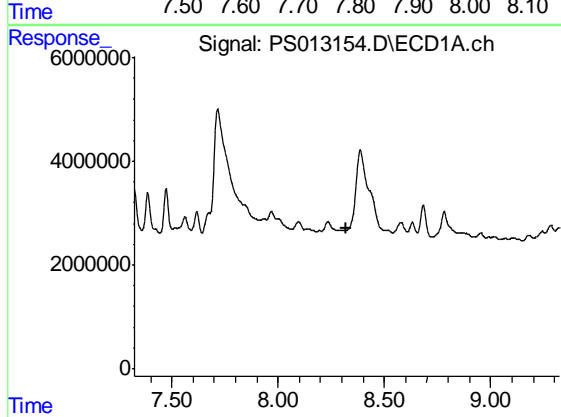
R.T.: 0.000 min
 Exp R.T. : 8.092 min
 Response: 0
 Conc: N.D.

Instrument :
 ECD_S
 ClientSampleId :
 PAV-B49-110520-10-18



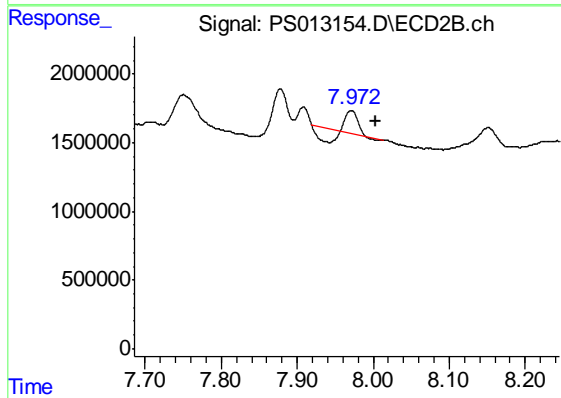
#8 DICHLORPROP

R.T.: 7.750 min
 Delta R.T.: 0.044 min
 Response: 5174303
 Conc: 11.58 ng/ml



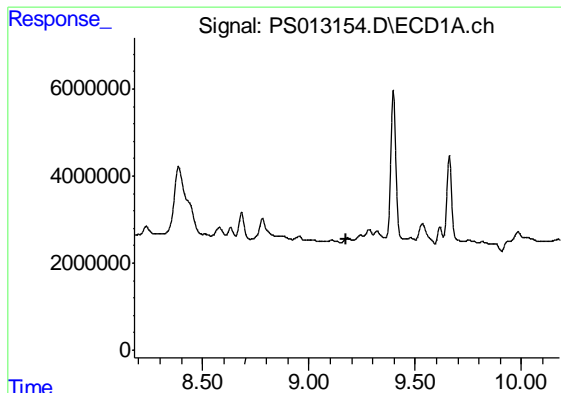
#9 2,4-D

R.T.: 0.000 min
 Exp R.T. : 8.324 min
 Response: 0
 Conc: N.D.



#9 2,4-D

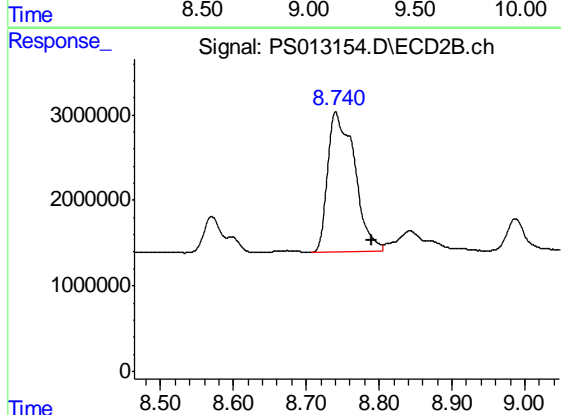
R.T.: 7.971 min
 Delta R.T.: -0.033 min
 Response: 592434
 Conc: 1.12 ng/ml



#11 2,4,5-TP (SILVEX)

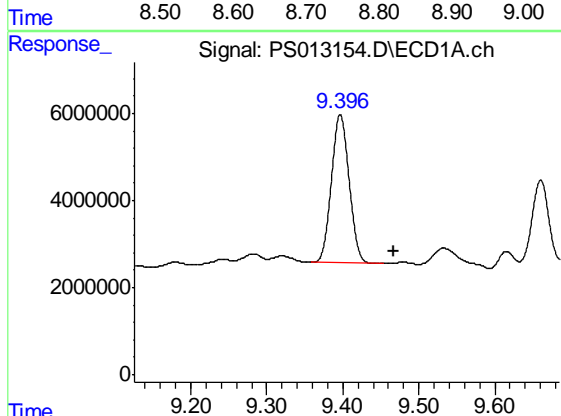
R.T.: 0.000 min
 Exp R.T. : 9.179 min
 Response: 0
 Conc: N.D.

Instrument :
 ECD_S
 ClientSampleId :
 PAV-B49-110520-10-18



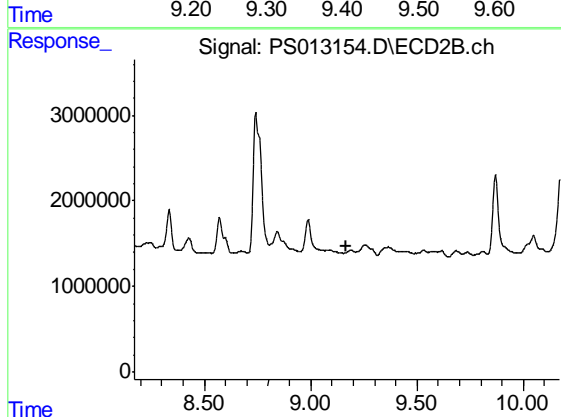
#11 2,4,5-TP (SILVEX)

R.T.: 8.740 min
 Delta R.T.: -0.049 min
 Response: 41774001
 Conc: 18.03 ng/ml



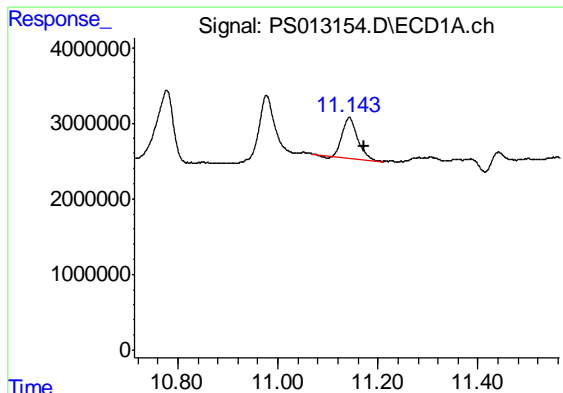
#12 2,4,5-T

R.T.: 9.397 min
 Delta R.T.: -0.070 min
 Response: 54612798
 Conc: 10.32 ng/ml



#12 2,4,5-T

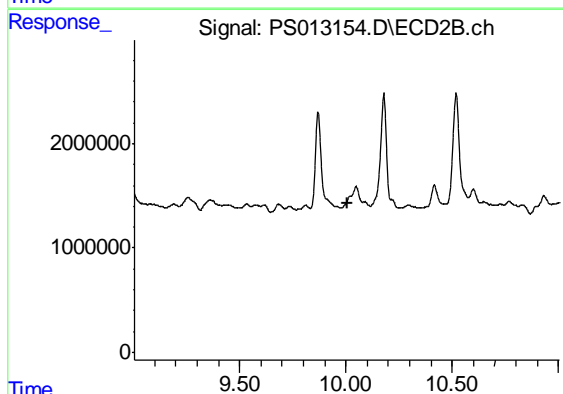
R.T.: 0.000 min
 Exp R.T. : 9.170 min
 Response: 0
 Conc: N.D.



#14 DINOSEB

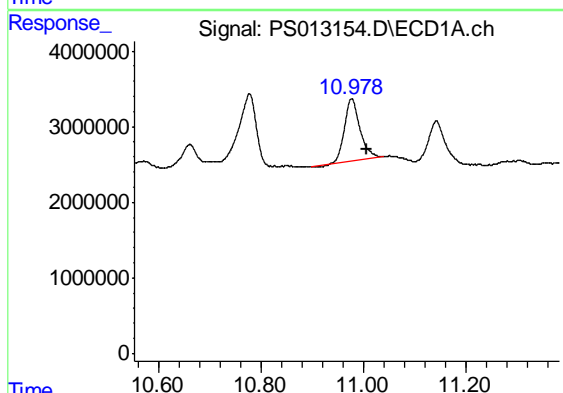
R.T.: 11.143 min
 Delta R.T.: -0.030 min
 Response: 11012596
 Conc: 2.67 ng/ml

Instrument :
 ECD_S
 ClientSampleId :
 PAV-B49-110520-10-18



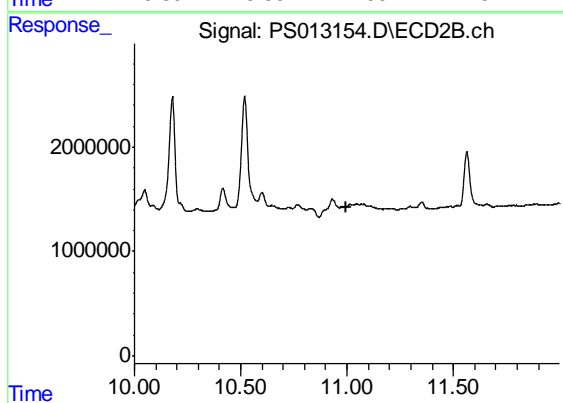
#14 DINOSEB

R.T.: 0.000 min
 Exp R.T. : 10.005 min
 Response: 0
 Conc: N.D.



#15 Picloram

R.T.: 10.977 min
 Delta R.T.: -0.029 min
 Response: 16844968
 Conc: 2.56 ng/ml



#15 Picloram

R.T.: 0.000 min
 Exp R.T. : 10.999 min
 Response: 0
 Conc: N.D.