

Data Path : Z:\pestpcbsrv\HPCHEM1\ECD\_S\Data\PS110624\  
 Data File : PS028276.D  
 Signal(s) : Signal #1: ECD1A.ch Signal #2: ECD2B.ch  
 Acq On : 06 Nov 2024 19:51  
 Operator : AR\AJ  
 Sample : P4695-01  
 Misc :  
 ALS Vial : 64 Sample Multiplier: 1

**Instrument :**  
 ECD\_S  
**ClientSampleId :**  
 Z-01

**Manual Integrations**  
**APPROVED**

Reviewed By :Abdul Mirza 11/08/2024  
 Supervised By :Ankita Jodhani 11/08/2024

Integration File signal 1: autoint1.e  
 Integration File signal 2: autoint2.e  
 Quant Time: Nov 07 00:47:13 2024  
 Quant Method : Z:\pestpcbsrv\HPCHEM1\ECD\_S\Method\PS110624.M  
 Quant Title : 8080.M  
 QLast Update : Wed Nov 06 11:48:19 2024  
 Response via : Initial Calibration  
 Integrator: ChemStation

Volume Inj. : 1 µl  
 Signal #1 Phase : ZB-MR1 Signal #2 Phase: ZB-MR2  
 Signal #1 Info : 30M x 0.32mm x0.5 Signal #2 Info : 30M x 0.32mm x 0.25µm

Compound	RT#1	RT#2	Resp#1	Resp#2	ng/ml	ng/ml
-----						
System Monitoring Compounds						
4) S 2,4-DCAA	7.260	7.763	547.9E6	328.7E6	213.925m	188.713m

Target Compounds

-----  
 (f)=RT Delta > 1/2 Window (#)=Amounts differ by > 25% (m)=manual int.

Data Path : Z:\pestpcbsrv\HPCHEM1\ECD\_S\Data\PS110624\  
 Data File : PS028276.D  
 Signal(s) : Signal #1: ECD1A.ch Signal #2: ECD2B.ch  
 Acq On : 06 Nov 2024 19:51  
 Operator : AR\AJ  
 Sample : P4695-01  
 Misc :  
 ALS Vial : 64 Sample Multiplier: 1

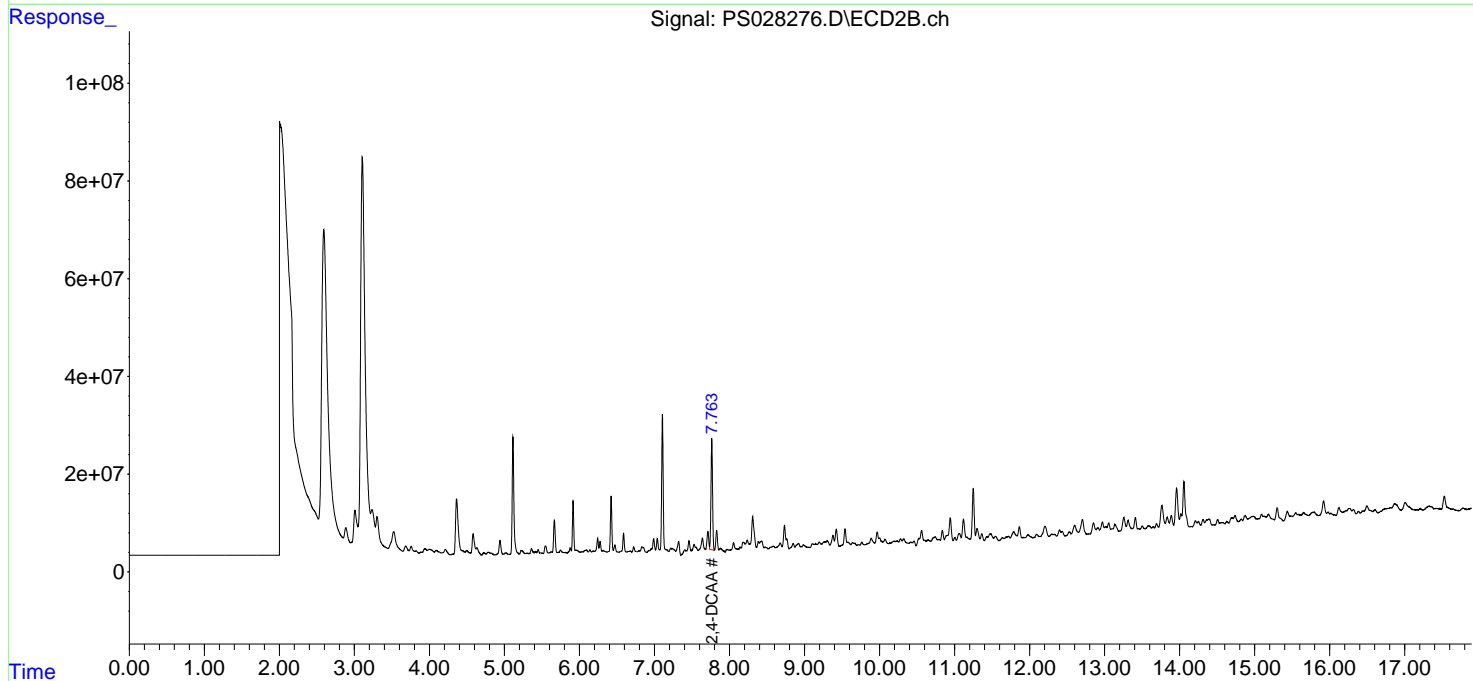
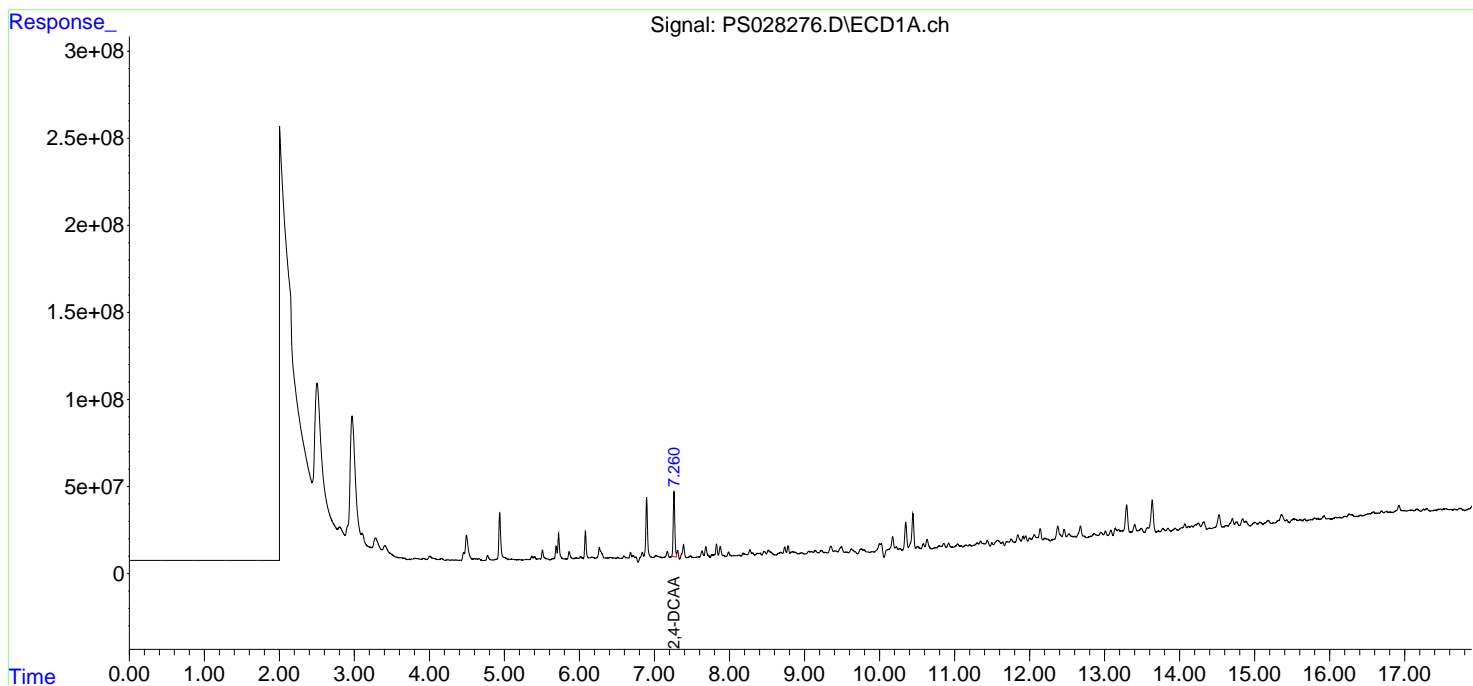
Instrument :  
 ECD\_S  
 ClientSampleId :  
 Z-01

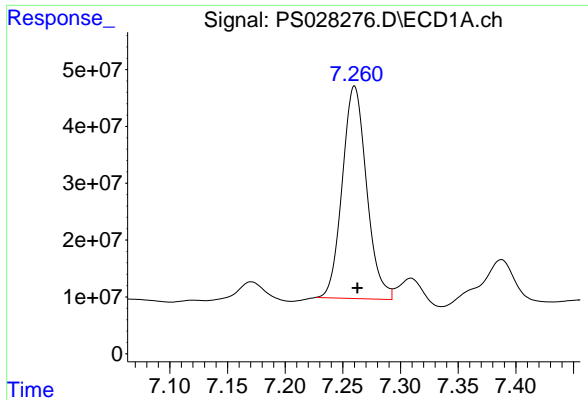
Manual Integrations  
 APPROVED

Reviewed By :Abdul Mirza 11/08/2024  
 Supervised By :Ankita Jodhani 11/08/2024

Integration File signal 1: autoint1.e  
 Integration File signal 2: autoint2.e  
 Quant Time: Nov 07 00:47:13 2024  
 Quant Method : Z:\pestpcbsrv\HPCHEM1\ECD\_S\Method\PS110624.M  
 Quant Title : 8080.M  
 QLast Update : Wed Nov 06 11:48:19 2024  
 Response via : Initial Calibration  
 Integrator: ChemStation

Volume Inj. : 1 µl  
 Signal #1 Phase : ZB-MR1 Signal #2 Phase: ZB-MR2  
 Signal #1 Info : 30M x 0.32mm x0.5 Signal #2 Info : 30M x 0.32mm x 0.25µm





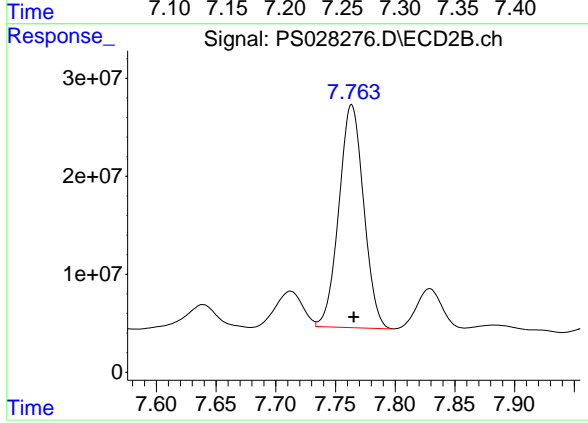
#4 2,4-DCAA

R.T.: 7.260 min  
Delta R.T.: -0.003 min  
Response: 547949539  
Conc: 213.92 ng/ml

Instrument :  
ECD\_S  
ClientSampleId :  
Z-01

Manual Integrations  
APPROVED

Reviewed By :Abdul Mirza 11/08/2024  
Supervised By :Ankita Jodhani 11/08/2024



#4 2,4-DCAA

R.T.: 7.763 min  
Delta R.T.: -0.002 min  
Response: 328696581  
Conc: 188.71 ng/ml m