

Data Path : Z:\pestpcbsrv\HPCHEM1\ECD_S\Data\PS110624\
 Data File : PS028317.D
 Signal(s) : Signal #1: ECD1A.ch Signal #2: ECD2B.ch
 Acq On : 07 Nov 2024 13:04
 Operator : AR\AJ
 Sample : PB164560TB
 Misc :
 ALS Vial : 88 Sample Multiplier: 1

Instrument :
 ECD_S
ClientSampleId :
 PB164560TB

Manual Integrations
APPROVED

Reviewed By :Abdul Mirza 11/08/2024
 Supervised By :Ankita Jodhani 11/08/2024

Integration File signal 1: autoint1.e
 Integration File signal 2: autoint2.e
 Quant Time: Nov 08 03:12:07 2024
 Quant Method : Z:\pestpcbsrv\HPCHEM1\ECD_S\Method\PS110624.M
 Quant Title : 8080.M
 QLast Update : Wed Nov 06 11:48:19 2024
 Response via : Initial Calibration
 Integrator: ChemStation

Volume Inj. : 1 µl
 Signal #1 Phase : ZB-MR1 Signal #2 Phase: ZB-MR2
 Signal #1 Info : 30M x 0.32mm x0.5 Signal #2 Info : 30M x 0.32mm x 0.25µm

Compound	RT#1	RT#2	Resp#1	Resp#2	ng/ml	ng/ml

System Monitoring Compounds						
4) S 2,4-DCAA	7.256	7.759	956.9E6	532.7E6	373.579	305.846m

Target Compounds

 (f)=RT Delta > 1/2 Window (#)=Amounts differ by > 25% (m)=manual int.

Data Path : Z:\pestpcbsrv\HPCHEM1\ECD_S\Data\PS110624\
 Data File : PS028317.D
 Signal(s) : Signal #1: ECD1A.ch Signal #2: ECD2B.ch
 Acq On : 07 Nov 2024 13:04
 Operator : AR\AJ
 Sample : PB164560TB
 Misc :
 ALS Vial : 88 Sample Multiplier: 1

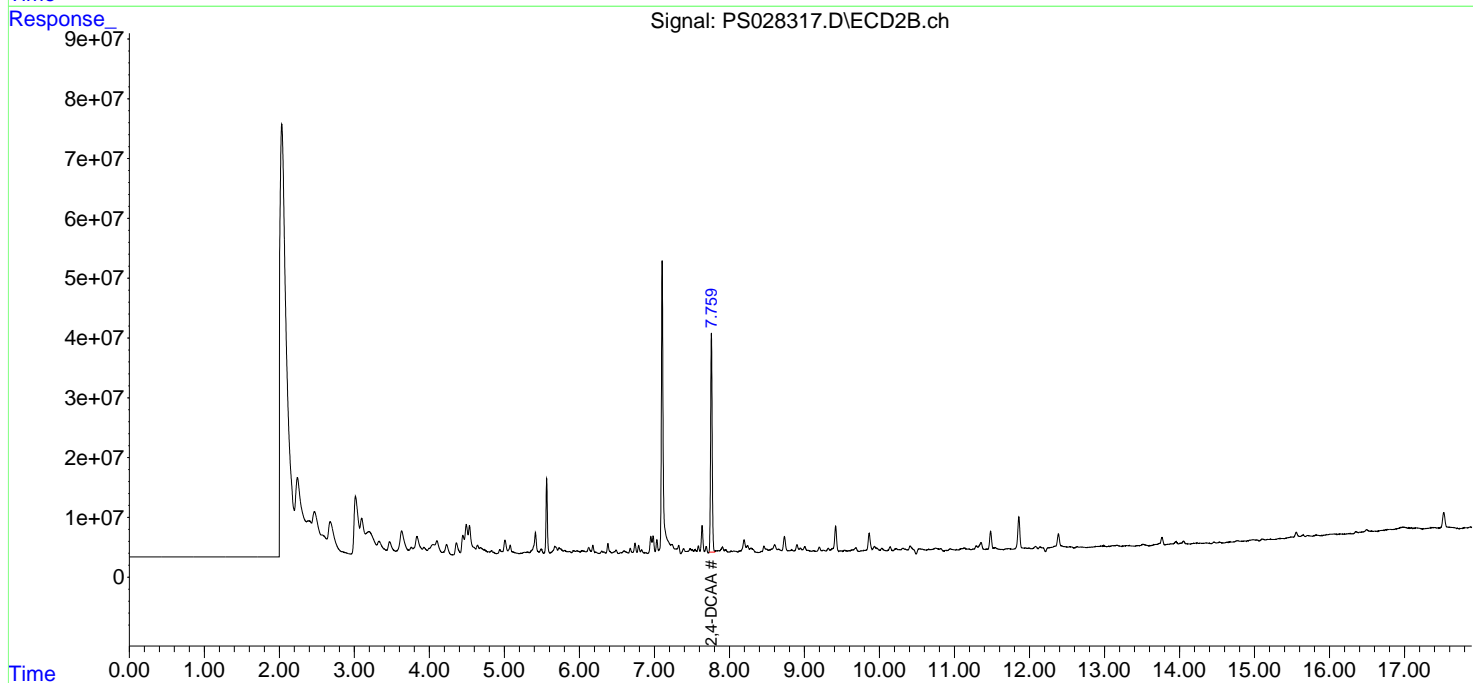
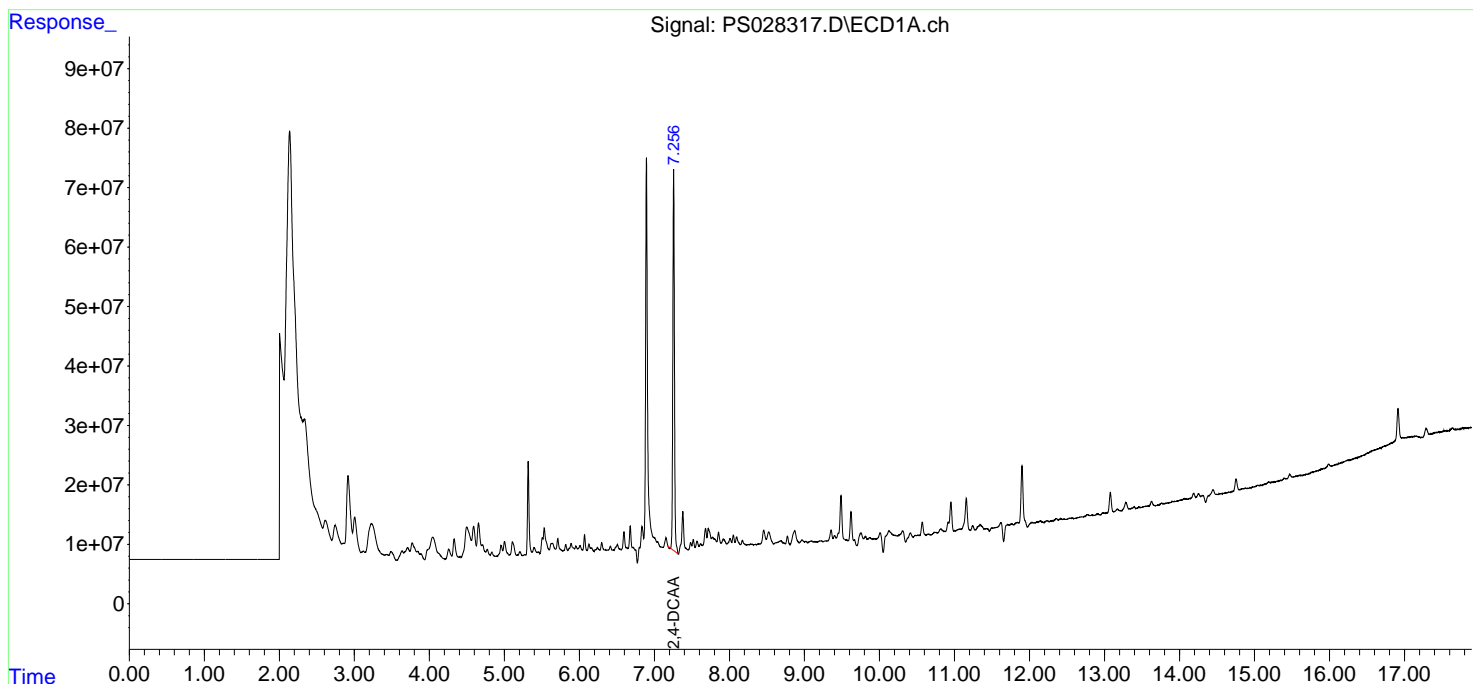
Instrument :
 ECD_S
 ClientSampleId :
 PB164560TB

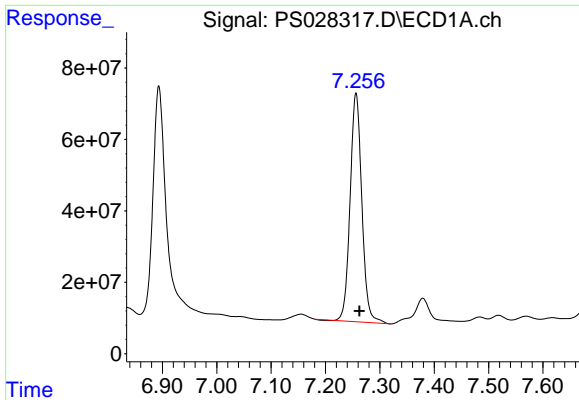
Manual Integrations
APPROVED

Reviewed By :Abdul Mirza 11/08/2024
 Supervised By :Ankita Jodhani 11/08/2024

Integration File signal 1: autoint1.e
 Integration File signal 2: autoint2.e
 Quant Time: Nov 08 03:12:07 2024
 Quant Method : Z:\pestpcbsrv\HPCHEM1\ECD_S\Method\PS110624.M
 Quant Title : 8080.M
 QLast Update : Wed Nov 06 11:48:19 2024
 Response via : Initial Calibration
 Integrator: ChemStation

Volume Inj. : 1 µl
 Signal #1 Phase : ZB-MR1 Signal #2 Phase: ZB-MR2
 Signal #1 Info : 30M x 0.32mm x0.5 Signal #2 Info : 30M x 0.32mm x 0.25µm





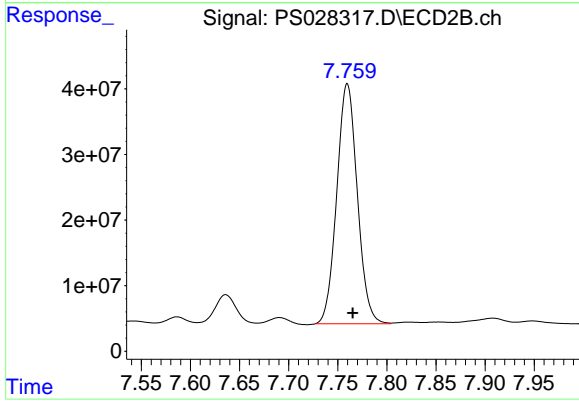
#4 2,4-DCAA

R.T.: 7.256 min
Delta R.T.: -0.006 min
Response: 956889801
Conc: 373.58 ng/ml

Instrument :
ECD_S
ClientSampleId :
PB164560TB

Manual Integrations
APPROVED

Reviewed By :Abdul Mirza 11/08/2024
Supervised By :Ankita Jodhani 11/08/2024



#4 2,4-DCAA

R.T.: 7.759 min
Delta R.T.: -0.006 min
Response: 532716202
Conc: 305.85 ng/ml m