

Data Path : Z:\pestpcbsrv\HPCHEM1\ECD_S\Data\PS110921\
 Data File : PS017350.D
 Signal(s) : Signal #1: ECD1A.ch Signal #2: ECD2B.ch
 Acq On : 09 Nov 2021 17:58
 Operator : DD\AJ
 Sample : HSTDCCC750
 Misc :
 ALS Vial : 3 Sample Multiplier: 1

Instrument :
 ECD_S
 ClientSampleId :
 HSTDCCC750

Integration File signal 1: autoint1.e
 Integration File signal 2: autoint2.e
 Quant Time: Nov 10 01:27:42 2021
 Quant Method : Z:\pestpcbsrv\HPCHEM1\ECD_S\Method\PS101821.M
 Quant Title : 8080.M
 QLast Update : Tue Oct 19 01:21:46 2021
 Response via : Initial Calibration
 Integrator: ChemStation

Volume Inj. : 2 µl
 Signal #1 Phase : Rtx-CLPesticides Signal #2 Phase: Rtx-CLPesticides2
 Signal #1 Info : 30M x 0.32mm x0.5 Signal #2 Info : 30M x 0.32mm x 0.25µm

	Compound	RT#1	RT#2	Resp#1	Resp#2	ng/ml	ng/ml

System Monitoring Compounds							
4) S	2,4-DCAA	7.149	6.737	1174.2E6	438.9E6	768.206	751.034
Target Compounds							
1) T	Dalapon	2.987	2.492	1674.5E6	491.5E6	771.161	759.535
2) T	3,5-DICHL...	6.374	5.936	1529.6E6	623.7E6	708.573	718.080
3) T	4-Nitroph...	6.980	6.364	542.4E6	209.1E6	621.933	648.757
5) T	DICAMBA	7.337	6.898	4373.6E6	1876.2E6	730.185m	736.890
6) T	MCP P	7.507	6.994	330.7E6	150.5E6	73.965	74.718
7) T	MCPA	7.655	7.205	452.0E6	204.5E6	73.271	69.086
8) T	DICHLORPROP	8.028	7.514	1088.4E6	468.0E6	725.908	727.678
9) T	2,4-D	8.258	7.805	1220.0E6	511.7E6	688.813	679.960
10) T	Pentachlo...	8.562	8.228	15388.2E6	6070.2E6	741.670	743.477
11) T	2,4,5-TP ...	9.112	8.589	6025.3E6	2562.1E6	740.877	743.258
12) T	2,4,5-T	9.397	8.965	5823.7E6	2272.7E6	725.050	717.052
13) T	2,4-DB	9.947	9.470	952.8E6	257.7E6	633.338	621.180
14) T	DINOSEB	11.096	9.794	4555.7E6	1779.8E6	804.208	806.574
15) T	Picloram	10.920	10.774	7044.2E6	2454.3E6	659.481	640.849
16) T	DCPA	11.364	10.724	7720.6E6	3168.1E6	758.093	742.412

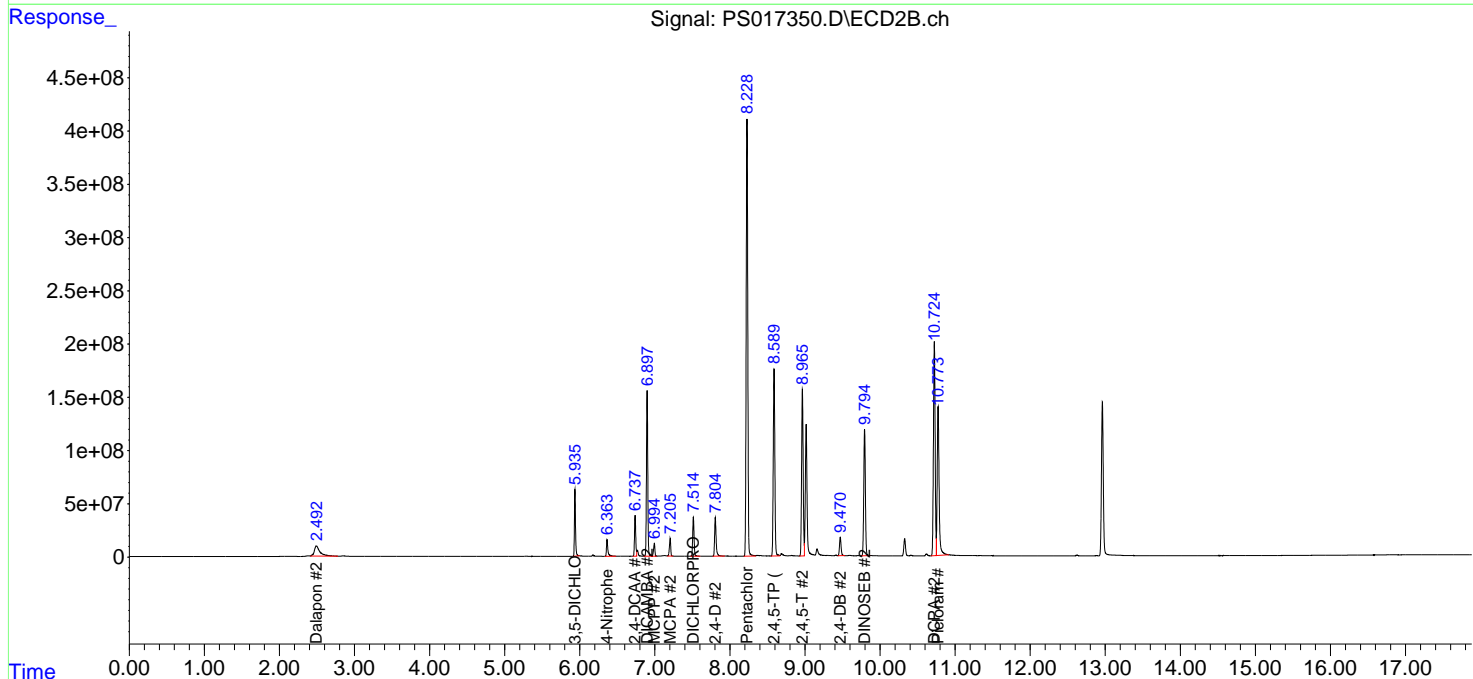
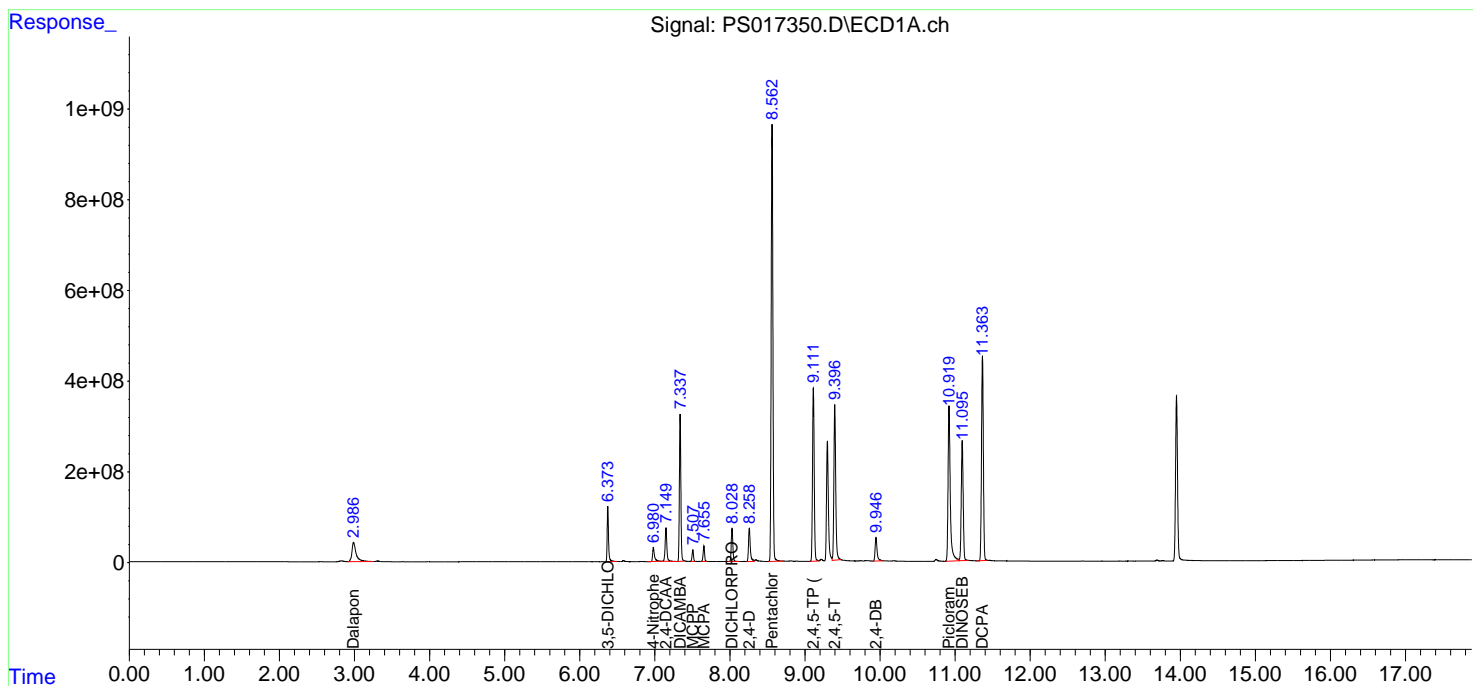
(f)=RT Delta > 1/2 Window (#)=Amounts differ by > 25% (m)=manual int.

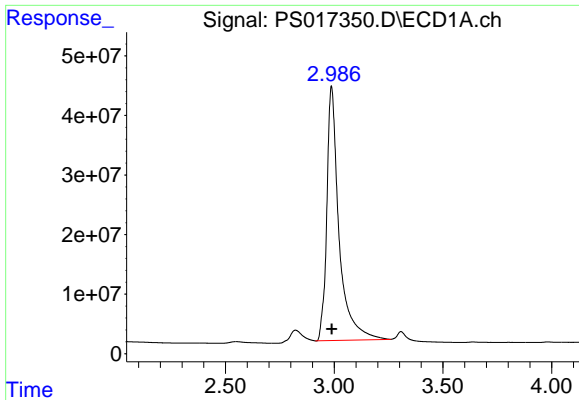
Data Path : Z:\pestpcbsrv\HPCHEM1\ECD_S\Data\PS110921\
 Data File : PS017350.D
 Signal(s) : Signal #1: ECD1A.ch Signal #2: ECD2B.ch
 Acq On : 09 Nov 2021 17:58
 Operator : DD\AJ
 Sample : HSTDCCC750
 Misc :
 ALS Vial : 3 Sample Multiplier: 1

Instrument :
 ECD_S
 ClientSampleId :
 HSTDCCC750

Integration File signal 1: autoint1.e
 Integration File signal 2: autoint2.e
 Quant Time: Nov 10 01:27:42 2021
 Quant Method : Z:\pestpcbsrv\HPCHEM1\ECD_S\Method\PS101821.M
 Quant Title : 8080.M
 QLast Update : Tue Oct 19 01:21:46 2021
 Response via : Initial Calibration
 Integrator: ChemStation

Volume Inj. : 2 µl
 Signal #1 Phase : Rtx-CLPesticides Signal #2 Phase: Rtx-CLPesticides2
 Signal #1 Info : 30M x 0.32mm x0.5 Signal #2 Info : 30M x 0.32mm x 0.25µm

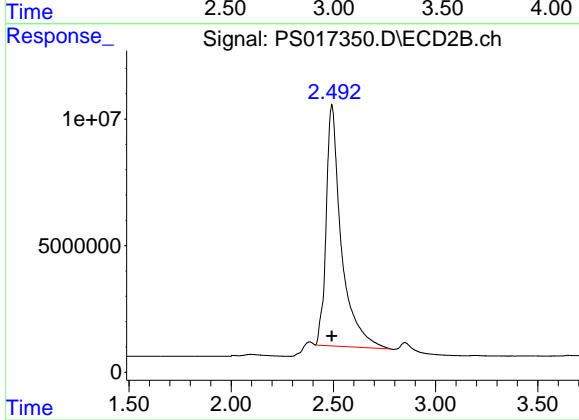




#1 Dalapon

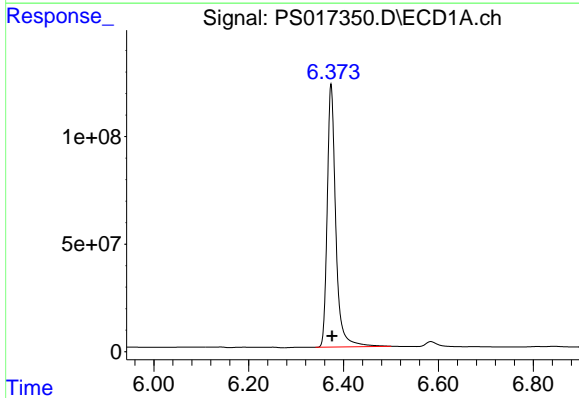
R.T.: 2.987 min
 Delta R.T.: -0.002 min
 Response: 1674506160
 Conc: 771.16 ng/ml

Instrument :
 ECD_S
 ClientSampleId :
 HSTDCCC750



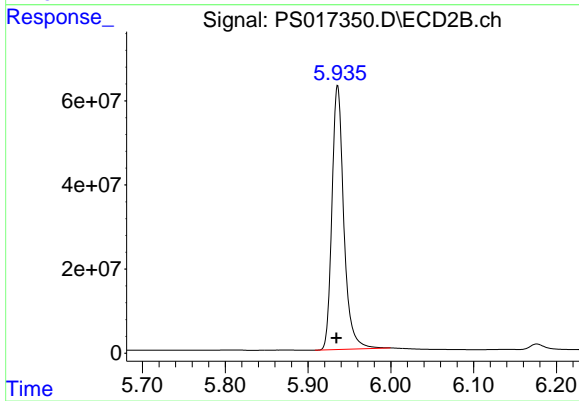
#1 Dalapon

R.T.: 2.492 min
 Delta R.T.: 0.001 min
 Response: 491452683
 Conc: 759.53 ng/ml



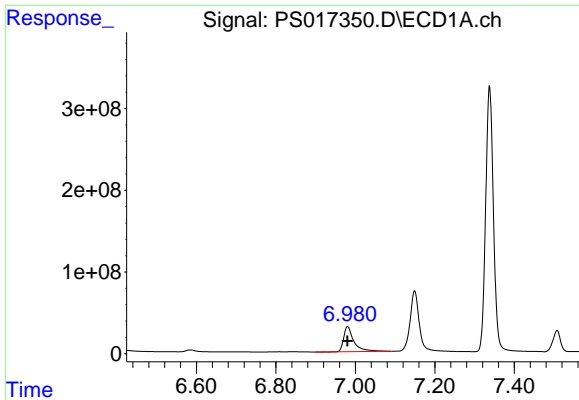
#2 3,5-DICHLOROBENZOIC ACID

R.T.: 6.374 min
 Delta R.T.: -0.002 min
 Response: 1529596098
 Conc: 708.57 ng/ml



#2 3,5-DICHLOROBENZOIC ACID

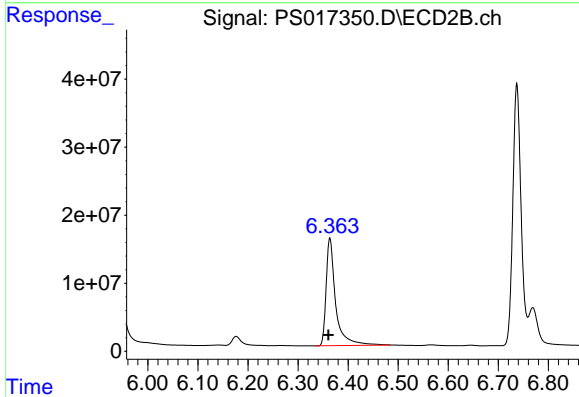
R.T.: 5.936 min
 Delta R.T.: 0.002 min
 Response: 623675958
 Conc: 718.08 ng/ml



#3 4-Nitrophenol

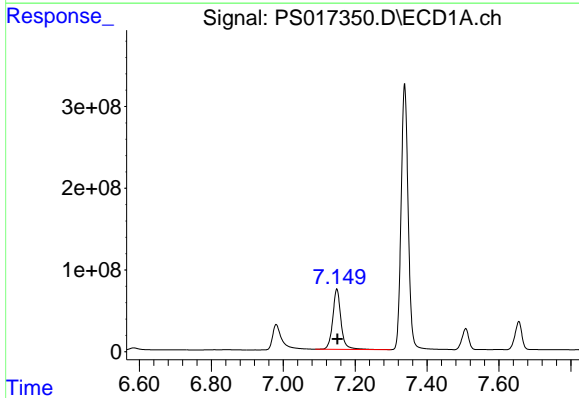
R.T.: 6.980 min
 Delta R.T.: 0.000 min
 Response: 542422246
 Conc: 621.93 ng/ml

Instrument :
 ECD_S
 ClientSampleId :
 HSTDCCC750



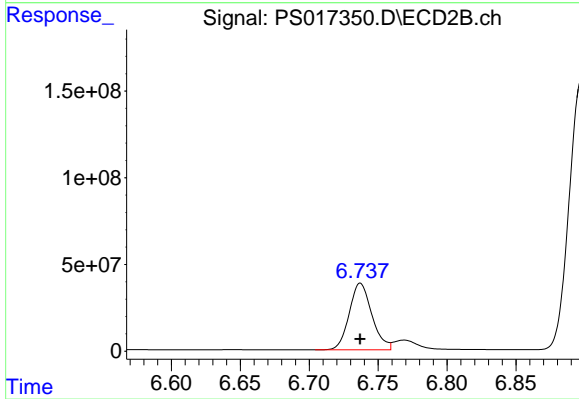
#3 4-Nitrophenol

R.T.: 6.364 min
 Delta R.T.: 0.003 min
 Response: 209123336
 Conc: 648.76 ng/ml



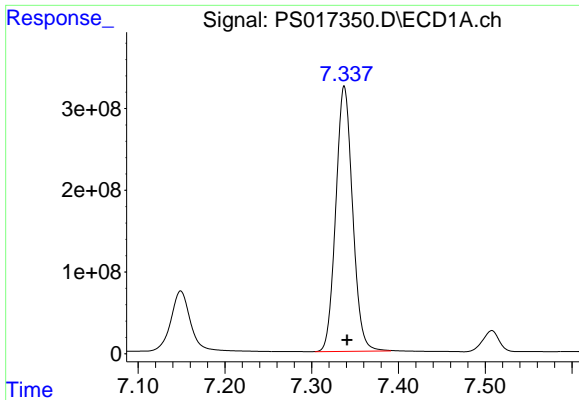
#4 2,4-DCAA

R.T.: 7.149 min
 Delta R.T.: -0.002 min
 Response: 1174171315
 Conc: 768.21 ng/ml



#4 2,4-DCAA

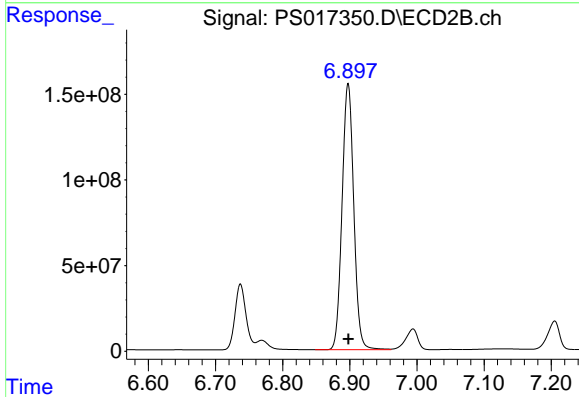
R.T.: 6.737 min
 Delta R.T.: 0.000 min
 Response: 438935335
 Conc: 751.03 ng/ml



#5 DICAMBA

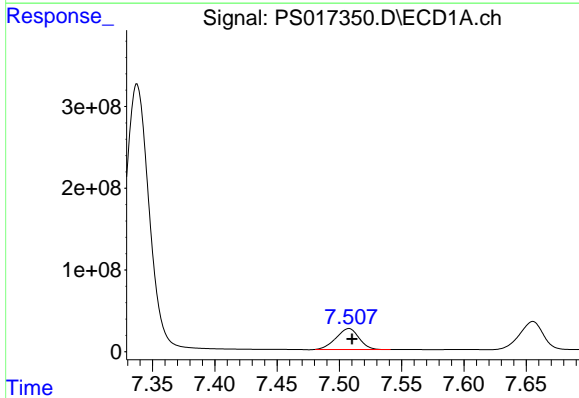
R.T.: 7.337 min
 Delta R.T.: -0.004 min
 Response: 4373611946
 Conc: 730.19 ng/ml

Instrument :
 ECD_S
 ClientSampleId :
 HSTDCCC750



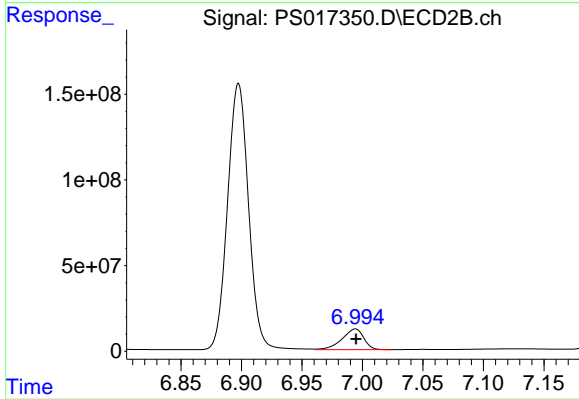
#5 DICAMBA

R.T.: 6.898 min
 Delta R.T.: 0.000 min
 Response: 1876171437
 Conc: 736.89 ng/ml



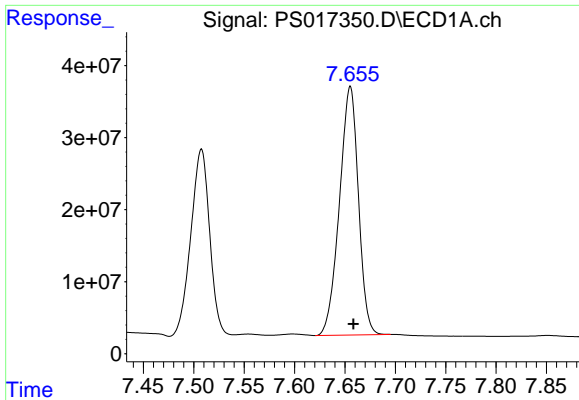
#6 MCP

R.T.: 7.507 min
 Delta R.T.: -0.003 min
 Response: 330655063
 Conc: 73.96 ug/ml



#6 MCP

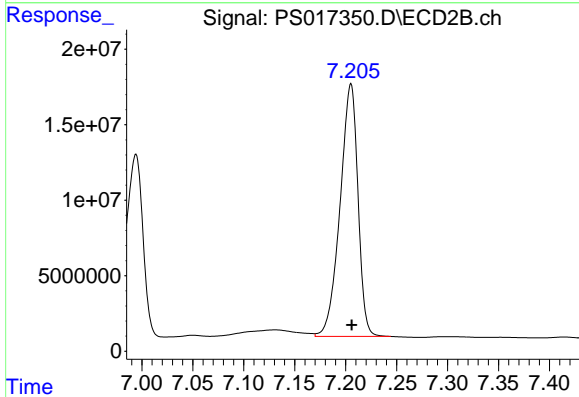
R.T.: 6.994 min
 Delta R.T.: 0.000 min
 Response: 150471489
 Conc: 74.72 ug/ml



#7 MCPA

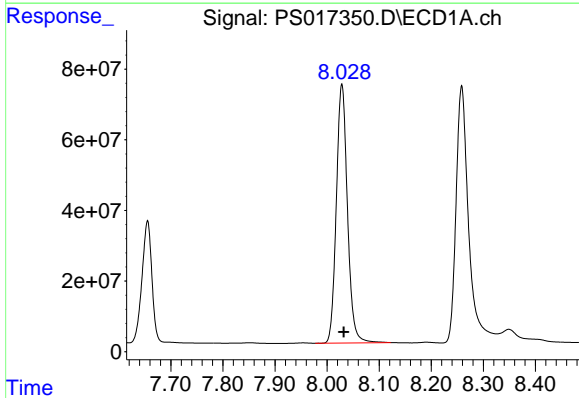
R.T.: 7.655 min
 Delta R.T.: -0.003 min
 Response: 452045768
 Conc: 73.27 ug/ml

Instrument :
 ECD_S
 ClientSampleId :
 HSTDCCC750



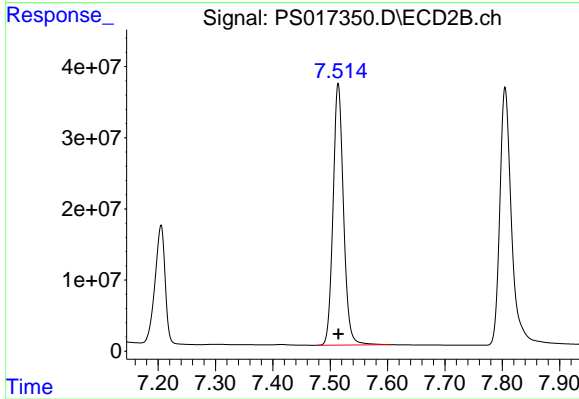
#7 MCPA

R.T.: 7.205 min
 Delta R.T.: 0.000 min
 Response: 204520974
 Conc: 69.09 ug/ml



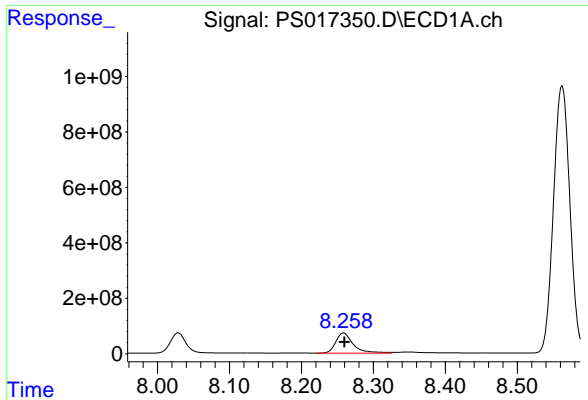
#8 DICHLORPROP

R.T.: 8.028 min
 Delta R.T.: -0.003 min
 Response: 1088420875
 Conc: 725.91 ng/ml



#8 DICHLORPROP

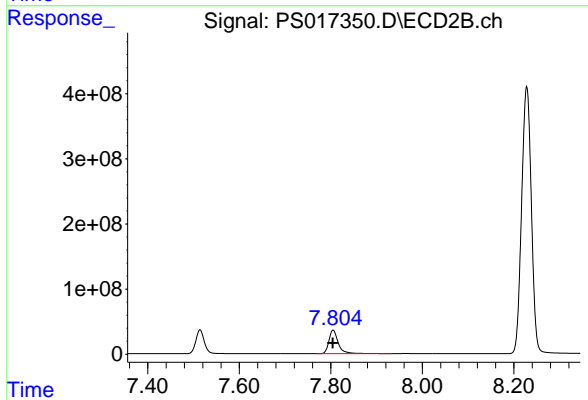
R.T.: 7.514 min
 Delta R.T.: 0.000 min
 Response: 467965272
 Conc: 727.68 ng/ml



#9 2,4-D

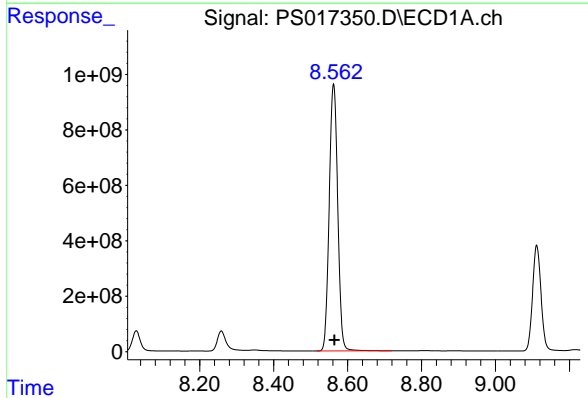
R.T.: 8.258 min
 Delta R.T.: -0.001 min
 Response: 1220026358
 Conc: 688.81 ng/ml

Instrument :
 ECD_S
 ClientSampleId :
 HSTDCCC750



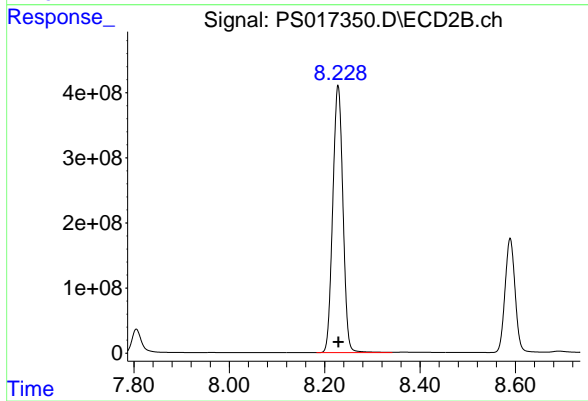
#9 2,4-D

R.T.: 7.805 min
 Delta R.T.: 0.001 min
 Response: 511724356
 Conc: 679.96 ng/ml



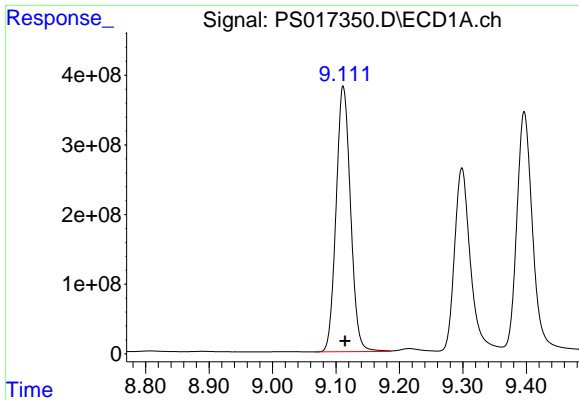
#10 Pentachlorophenol

R.T.: 8.562 min
 Delta R.T.: -0.003 min
 Response: 15388211649
 Conc: 741.67 ng/ml



#10 Pentachlorophenol

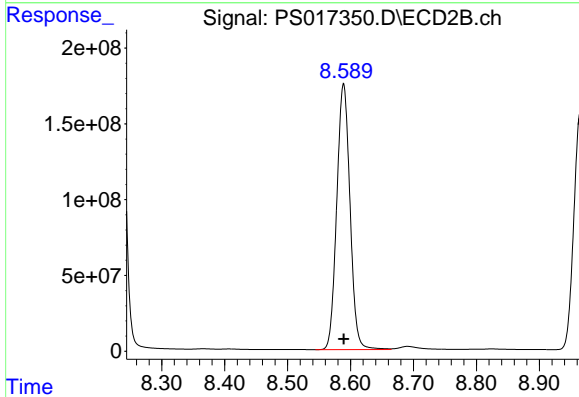
R.T.: 8.228 min
 Delta R.T.: 0.000 min
 Response: 6070245421
 Conc: 743.48 ng/ml



#11 2,4,5-TP (SILVEX)

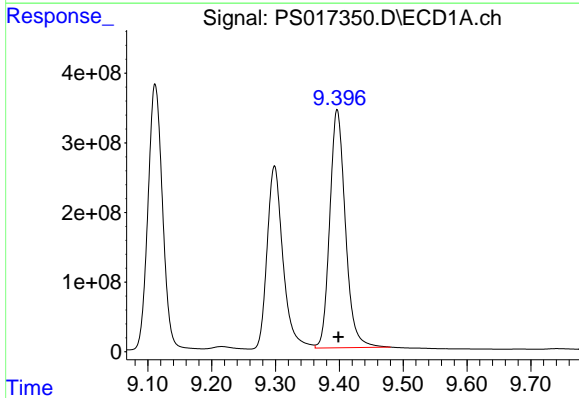
R.T.: 9.112 min
 Delta R.T.: -0.003 min
 Response: 6025336037
 Conc: 740.88 ng/ml

Instrument :
 ECD_S
 ClientSampleId :
 HSTDCCC750



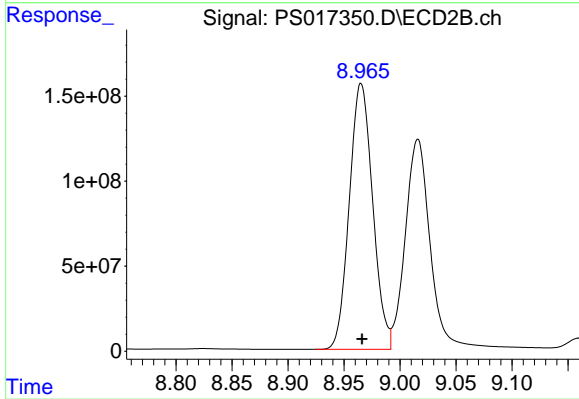
#11 2,4,5-TP (SILVEX)

R.T.: 8.589 min
 Delta R.T.: 0.000 min
 Response: 2562122257
 Conc: 743.26 ng/ml



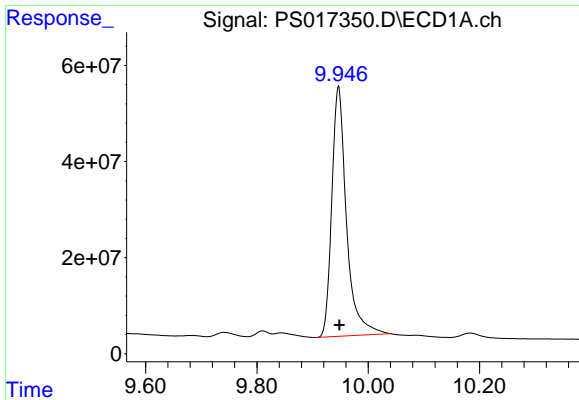
#12 2,4,5-T

R.T.: 9.397 min
 Delta R.T.: -0.002 min
 Response: 5823693862
 Conc: 725.05 ng/ml



#12 2,4,5-T

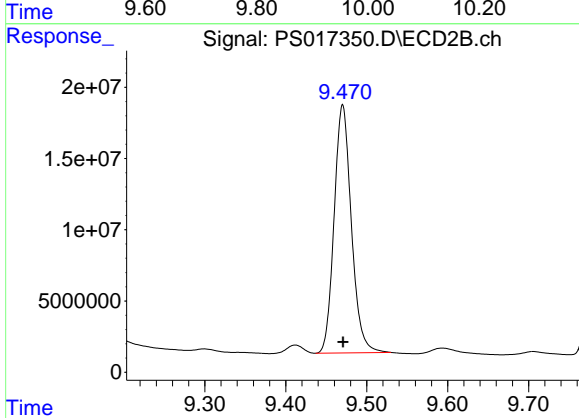
R.T.: 8.965 min
 Delta R.T.: -0.001 min
 Response: 2272691409
 Conc: 717.05 ng/ml



#13 2,4-DB

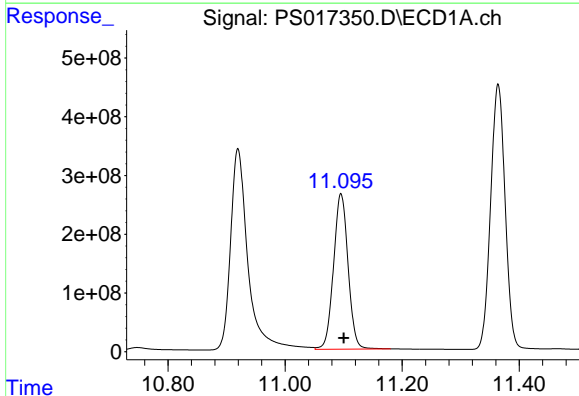
R.T.: 9.947 min
Delta R.T.: -0.001 min
Response: 952760089
Conc: 633.34 ng/ml

Instrument :
ECD_S
ClientSampleId :
HSTDCCC750



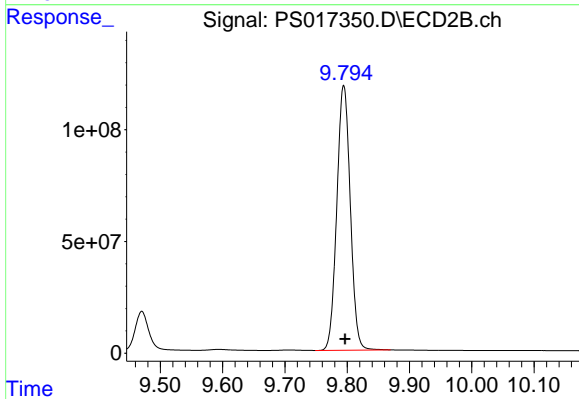
#13 2,4-DB

R.T.: 9.470 min
Delta R.T.: 0.000 min
Response: 257650210
Conc: 621.18 ng/ml



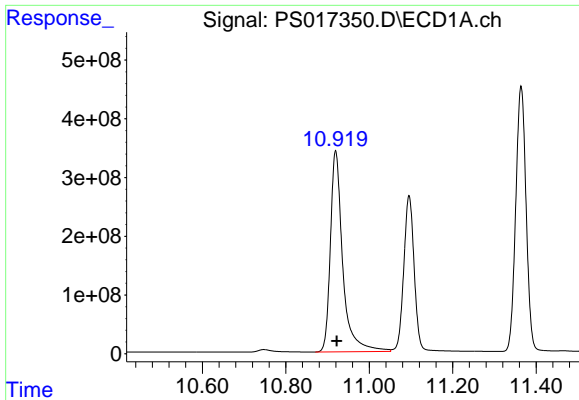
#14 DINOSEB

R.T.: 11.096 min
Delta R.T.: -0.004 min
Response: 4555693983
Conc: 804.21 ng/ml



#14 DINOSEB

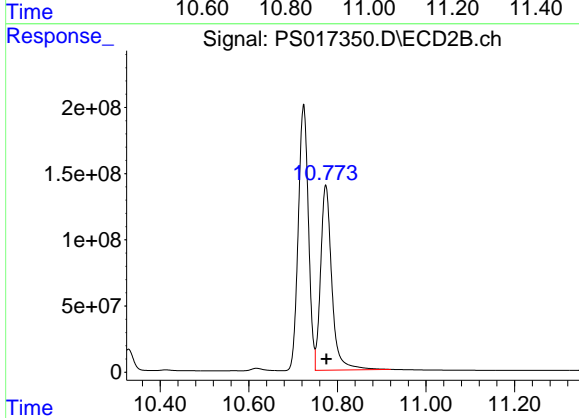
R.T.: 9.794 min
Delta R.T.: -0.002 min
Response: 1779767390
Conc: 806.57 ng/ml



#15 Picloram

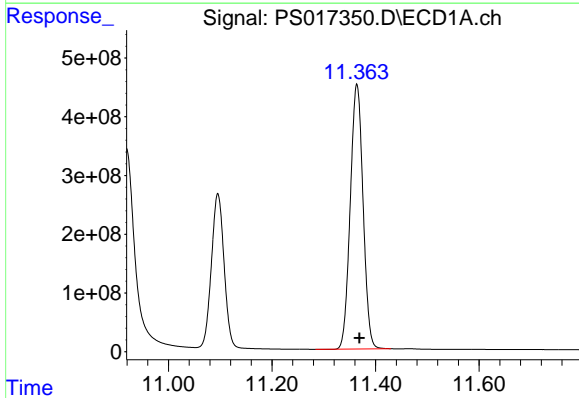
R.T.: 10.920 min
 Delta R.T.: -0.003 min
 Response: 7044198465
 Conc: 659.48 ng/ml

Instrument :
 ECD_S
 ClientSampleId :
 HSTDCCC750



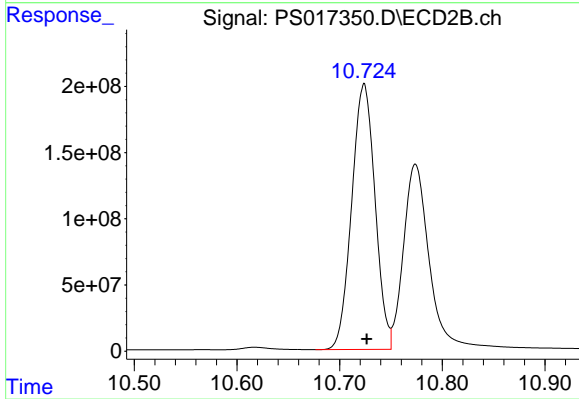
#15 Picloram

R.T.: 10.774 min
 Delta R.T.: -0.001 min
 Response: 2454274301
 Conc: 640.85 ng/ml



#16 DCPA

R.T.: 11.364 min
 Delta R.T.: -0.005 min
 Response: 7720572438
 Conc: 758.09 ng/ml



#16 DCPA

R.T.: 10.724 min
 Delta R.T.: -0.003 min
 Response: 3168059070
 Conc: 742.41 ng/ml