

Data Path : Z:\pestpcbsrv\HPCHEM1\ECD_S\Data\PS111119\
 Data File : PS007651.D
 Signal(s) : Signal #1: ECD1A.ch Signal #2: ECD2B.ch
 Acq On : 11 Nov 2019 18:30
 Operator : SM\AJ
 Sample : K5746-05
 Misc :
 ALS Vial : 7 Sample Multiplier: 1

Instrument :
 ECD_S
 ClientSampleId :
 TP-1A-COMP

Integration File signal 1: autoint1.e
 Integration File signal 2: autoint2.e
 Quant Time: Nov 12 00:26:52 2019
 Quant Method : Z:\pestpcbsrv\HPCHEM1\ECD_S\Method\PS110619.M
 Quant Title : 8080.M
 QLast Update : Wed Nov 06 02:45:11 2019
 Response via : Initial Calibration
 Integrator: ChemStation

Volume Inj. : 2 µl
 Signal #1 Phase : Rtx-CLPesticides Signal #2 Phase: Rtx-CLPesticides2
 Signal #1 Info : 30M x 0.32mm x0.5 Signal #2 Info : 30M x 0.32mm x 0.25µm

Compound	RT#1	RT#2	Resp#1	Resp#2	ng/ml	ng/ml

System Monitoring Compounds						
4) S 2,4-DCAA	5.431	5.156	465.8E6	228.7E6	338.218	325.502
Target Compounds						
1) T Dalapon	1.993	1.698	111.8E6	399.9E6	61.795	336.769 #
2) T 3,5-DICHL...	0.000	4.491	0	29247438	N.D.	32.374
5) T DICAMBA	5.524	0.000	33258657	0	6.537	N.D. #
7) T MCPA	5.834	5.524	32814836	31343859	5.962	10.428 #
8) T DICHLORPROP	0.000	5.743	0	22288831	N.D.	33.987
9) T 2,4-D	6.481	0.000	38432495	0	27.402	N.D. #
10) T Pentachlo...	0.000	6.447	0	6288255	N.D.	<MDL
11) T 2,4,5-TP ...	0.000	6.754	0	35342225	N.D.	9.025
16) T DCPA	0.000	8.808	0	11990801	N.D.	2.295

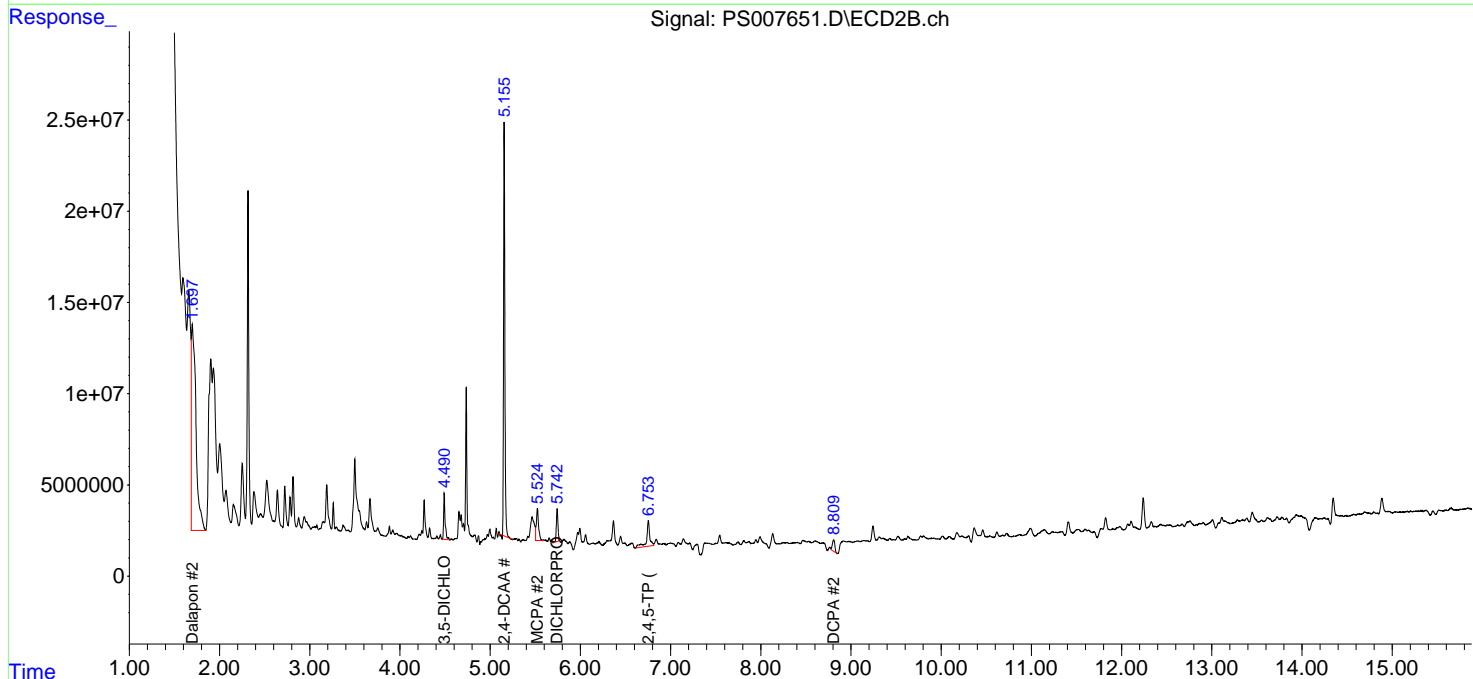
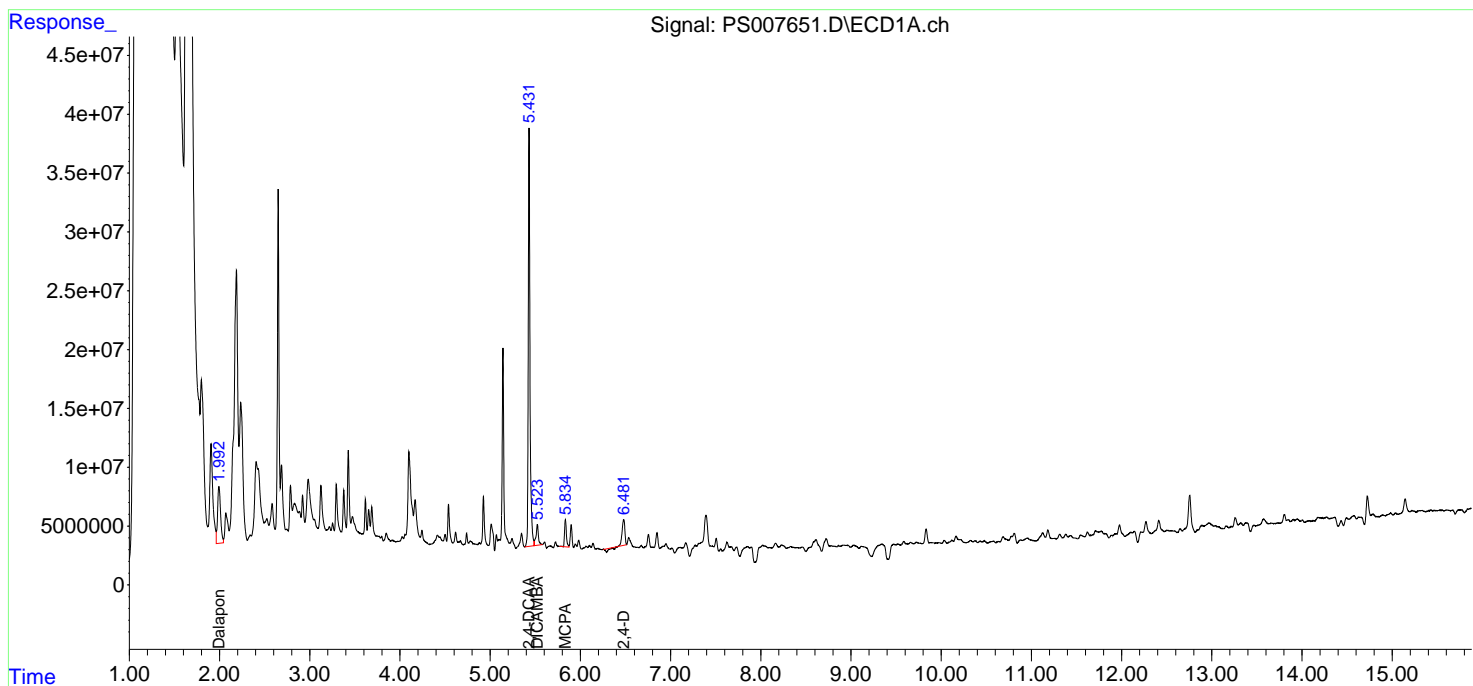
(f)=RT Delta > 1/2 Window (#)=Amounts differ by > 25% (m)=manual int.

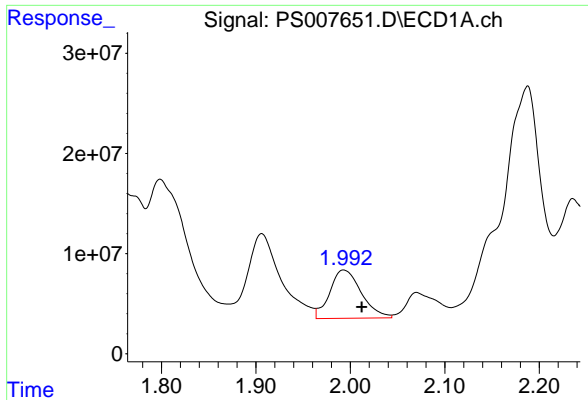
Data Path : Z:\pestpcbsrv\HPCHEM1\ECD_S\Data\PS111119\
 Data File : PS007651.D
 Signal(s) : Signal #1: ECD1A.ch Signal #2: ECD2B.ch
 Acq On : 11 Nov 2019 18:30
 Operator : SM\AJ
 Sample : K5746-05
 Misc :
 ALS Vial : 7 Sample Multiplier: 1

Instrument :
 ECD_S
 ClientSampled :
 TP-1A-COMP

Integration File signal 1: autoint1.e
 Integration File signal 2: autoint2.e
 Quant Time: Nov 12 00:26:52 2019
 Quant Method : Z:\pestpcbsrv\HPCHEM1\ECD_S\Method\PS110619.M
 Quant Title : 8080.M
 QLast Update : Wed Nov 06 02:45:11 2019
 Response via : Initial Calibration
 Integrator: ChemStation

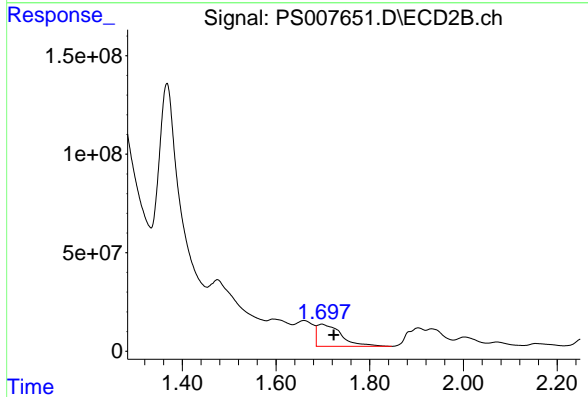
Volume Inj. : 2 µl
 Signal #1 Phase : Rtx-CLPesticides Signal #2 Phase: Rtx-CLPesticides2
 Signal #1 Info : 30M x 0.32mm x 0.5 Signal #2 Info : 30M x 0.32mm x 0.25µm



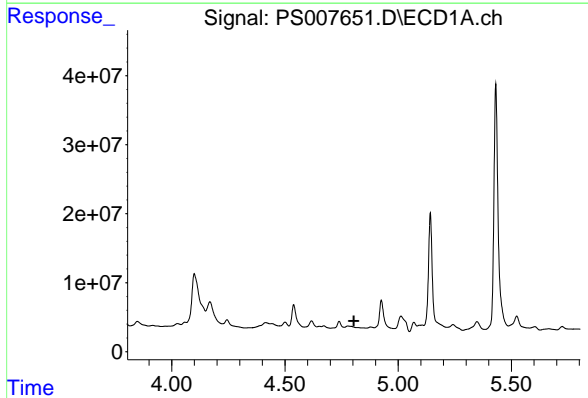


#1 Dalapon
 R.T.: 1.993 min
 Delta R.T.: -0.019 min
 Response: 111798172
 Conc: 61.79 ng/ml

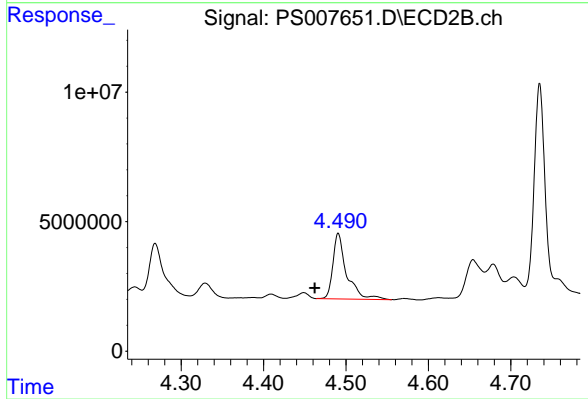
Instrument :
 ECD_S
 ClientSampleId :
 TP-1A-COMP



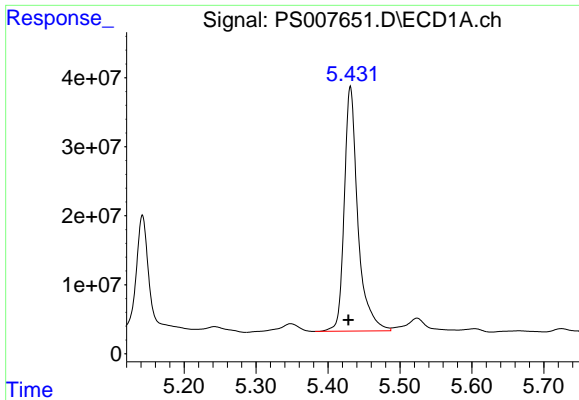
#1 Dalapon
 R.T.: 1.698 min
 Delta R.T.: -0.025 min
 Response: 399880194
 Conc: 336.77 ng/ml



#2 3,5-DICHLOROBENZOIC ACID
 R.T.: 0.000 min
 Exp R.T. : 4.804 min
 Response: 0
 Conc: N.D.



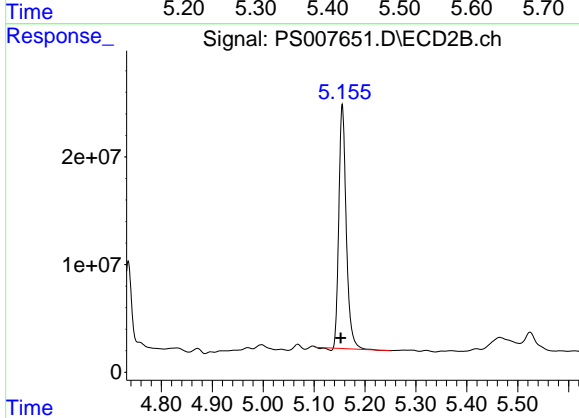
#2 3,5-DICHLOROBENZOIC ACID
 R.T.: 4.491 min
 Delta R.T.: 0.029 min
 Response: 29247438
 Conc: 32.37 ng/ml



#4 2,4-DCAA

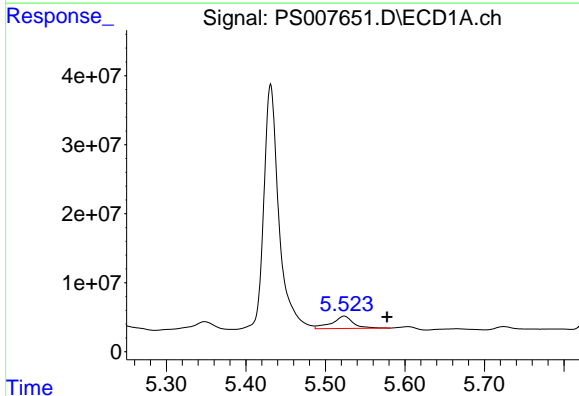
R.T.: 5.431 min
 Delta R.T.: 0.003 min
 Response: 465788852
 Conc: 338.22 ng/ml

Instrument :
 ECD_S
 ClientSampleId :
 TP-1A-COMP



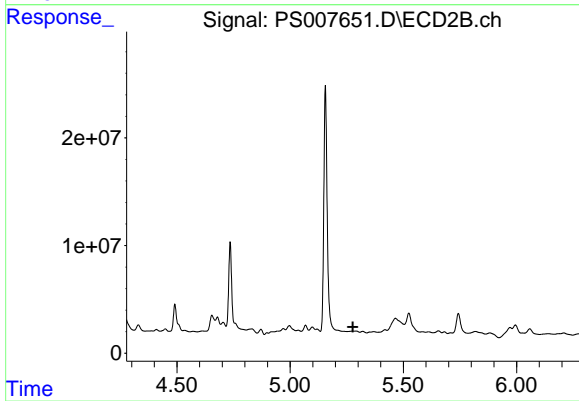
#4 2,4-DCAA

R.T.: 5.156 min
 Delta R.T.: 0.003 min
 Response: 228685855
 Conc: 325.50 ng/ml



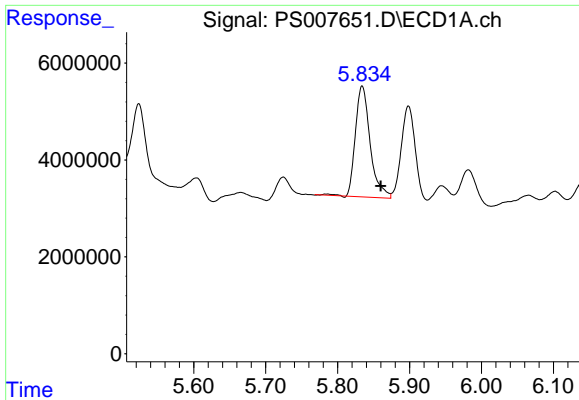
#5 DICAMBA

R.T.: 5.524 min
 Delta R.T.: -0.054 min
 Response: 33258657
 Conc: 6.54 ng/ml



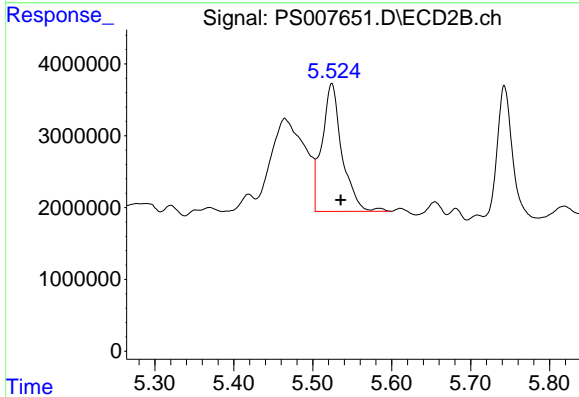
#5 DICAMBA

R.T.: 0.000 min
 Exp R.T. : 5.277 min
 Response: 0
 Conc: N.D.

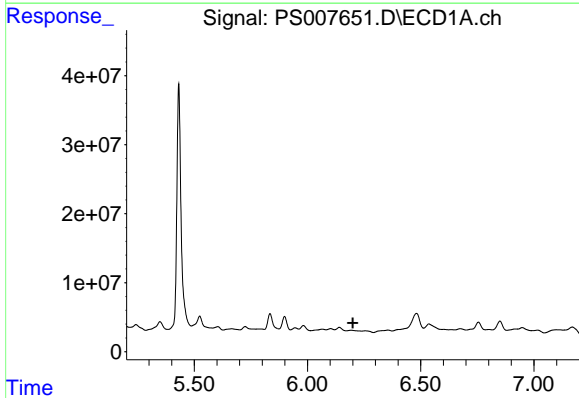


#7 MCPA
 R.T.: 5.834 min
 Delta R.T.: -0.026 min
 Response: 32814836
 Conc: 5.96 ug/ml

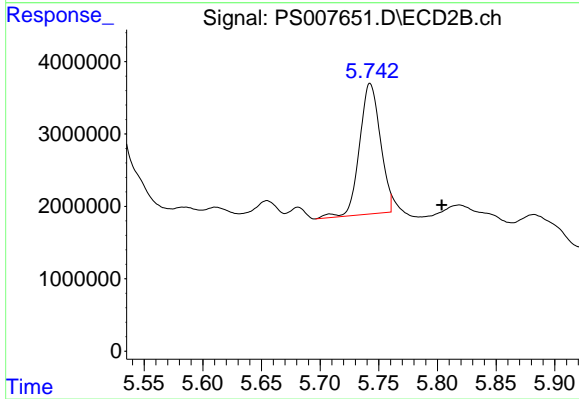
Instrument :
 ECD_S
 ClientSampleId :
 TP-1A-COMP



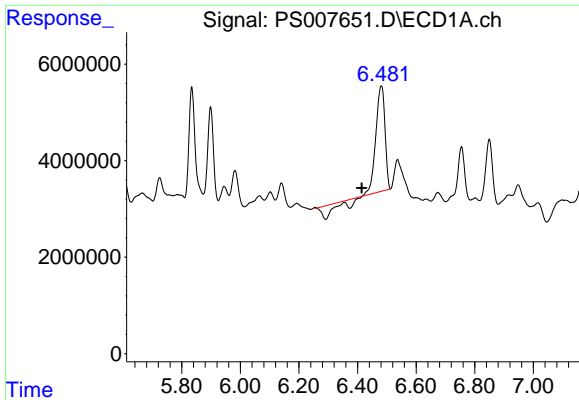
#7 MCPA
 R.T.: 5.524 min
 Delta R.T.: -0.012 min
 Response: 31343859
 Conc: 10.43 ug/ml



#8 DICHLORPROP
 R.T.: 0.000 min
 Exp R.T. : 6.200 min
 Response: 0
 Conc: N.D.

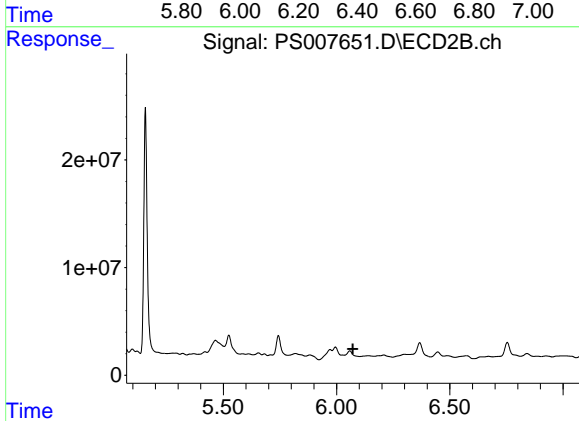


#8 DICHLORPROP
 R.T.: 5.743 min
 Delta R.T.: -0.061 min
 Response: 22288831
 Conc: 33.99 ng/ml

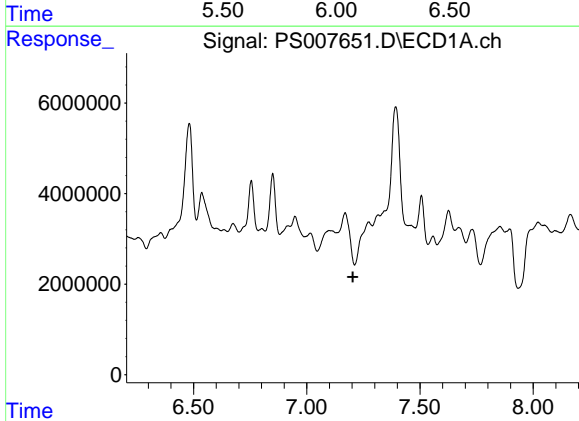


#9 2,4-D
 R.T.: 6.481 min
 Delta R.T.: 0.067 min
 Response: 38432495
 Conc: 27.40 ng/ml

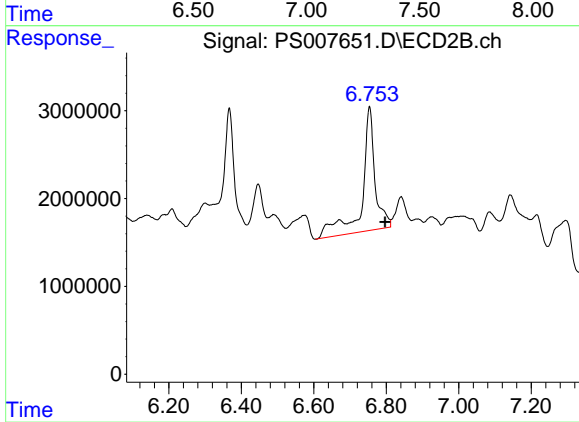
Instrument :
 ECD_S
 ClientSampleId :
 TP-1A-COMP



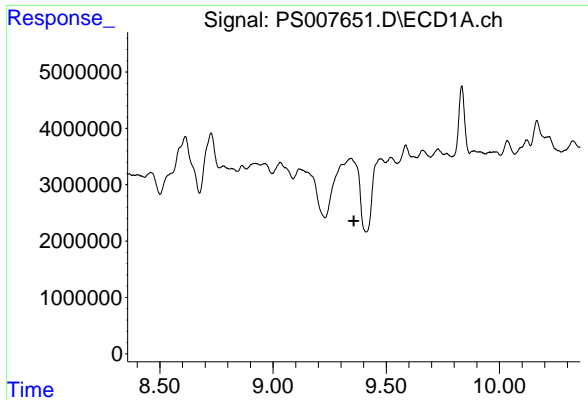
#9 2,4-D
 R.T.: 0.000 min
 Exp R.T. : 6.072 min
 Response: 0
 Conc: N.D.



#11 2,4,5-TP (SILVEX)
 R.T.: 0.000 min
 Exp R.T. : 7.203 min
 Response: 0
 Conc: N.D.



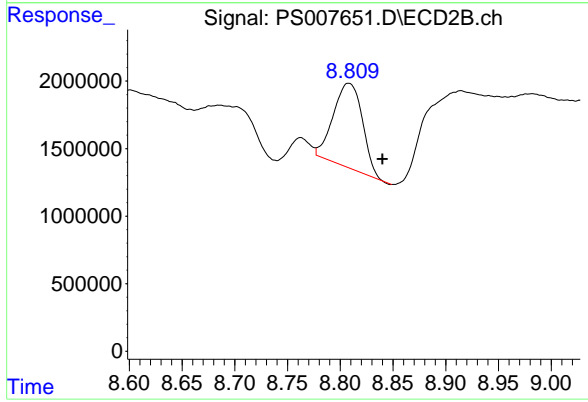
#11 2,4,5-TP (SILVEX)
 R.T.: 6.754 min
 Delta R.T.: -0.043 min
 Response: 35342225
 Conc: 9.03 ng/ml



#16 DCPA

R.T.: 0.000 min
Exp R.T.: 9.357 min
Response: 0
Conc: N.D.

Instrument :
ECD_S
ClientSampleId :
TP-1A-COMP



#16 DCPA

R.T.: 8.808 min
Delta R.T.: -0.032 min
Response: 11990801
Conc: 2.29 ng/ml