

Data Path : Z:\pestpcbsrv\HPCHEM1\ECD_S\Data\PS111218\
 Data File : PS002409.D
 Signal(s) : Signal #1: ECD1A.ch Signal #2: ECD2B.ch
 Acq On : 12 Nov 2018 10:44
 Operator : EI\SJ
 Sample : HEXANE
 Misc :
 ALS Vial : 1 Sample Multiplier: 1

Instrument :
 ECD_S
 ClientSampleId :

Integration File signal 1: autoint1.e
 Integration File signal 2: autoint2.e
 Quant Time: Nov 13 06:37:49 2018
 Quant Method : Z:\pestpcbsrv\HPCHEM1\ECD_S\Method\PS110918.M
 Quant Title : 8080.M
 QLast Update : Fri Nov 09 15:54:35 2018
 Response via : Initial Calibration
 Integrator: ChemStation

Volume Inj. : 2 µl
 Signal #1 Phase : Rtx-CLPesticides Signal #2 Phase: Rtx-CLPesticides2
 Signal #1 Info : 30M x 0.32mm x0.5 Signal #2 Info : 30M x 0.32mm x 0.25µm

	Compound	RT#1	RT#2	Resp#1	Resp#2	ng/ml	ng/ml

System Monitoring Compounds							
4) S	2,4-DCAA	0.000	10.942	0	408287	N.D.	1.116 #
Target Compounds							
1) T	Dalapon	0.000	2.431	0	1021292	N.D.	2.373 #
2) T	3,5-DICHL...	0.000	9.129	0	4629853	N.D.	10.213 #
3) T	4-Nitroph...	0.000	10.071	0	87957	N.D.	0.502 #
5) T	DICAMBA	0.000	11.212	0	161019	N.D.	0.119 #
6) T	MCPP	0.000	11.457	0	405007	N.D.	0.446 #
8) T	DICHLORPROP	0.000	12.331	0	67892	N.D.	0.205 #
10) T	Pentachlo...	0.000	13.335	0	63368	N.D.	0.012 #
15) T	Picloram	0.000	16.812	0	1563741	N.D.	0.588 #
16) T	DCPA	0.000	16.812	0	1563741	N.D.	0.652 #

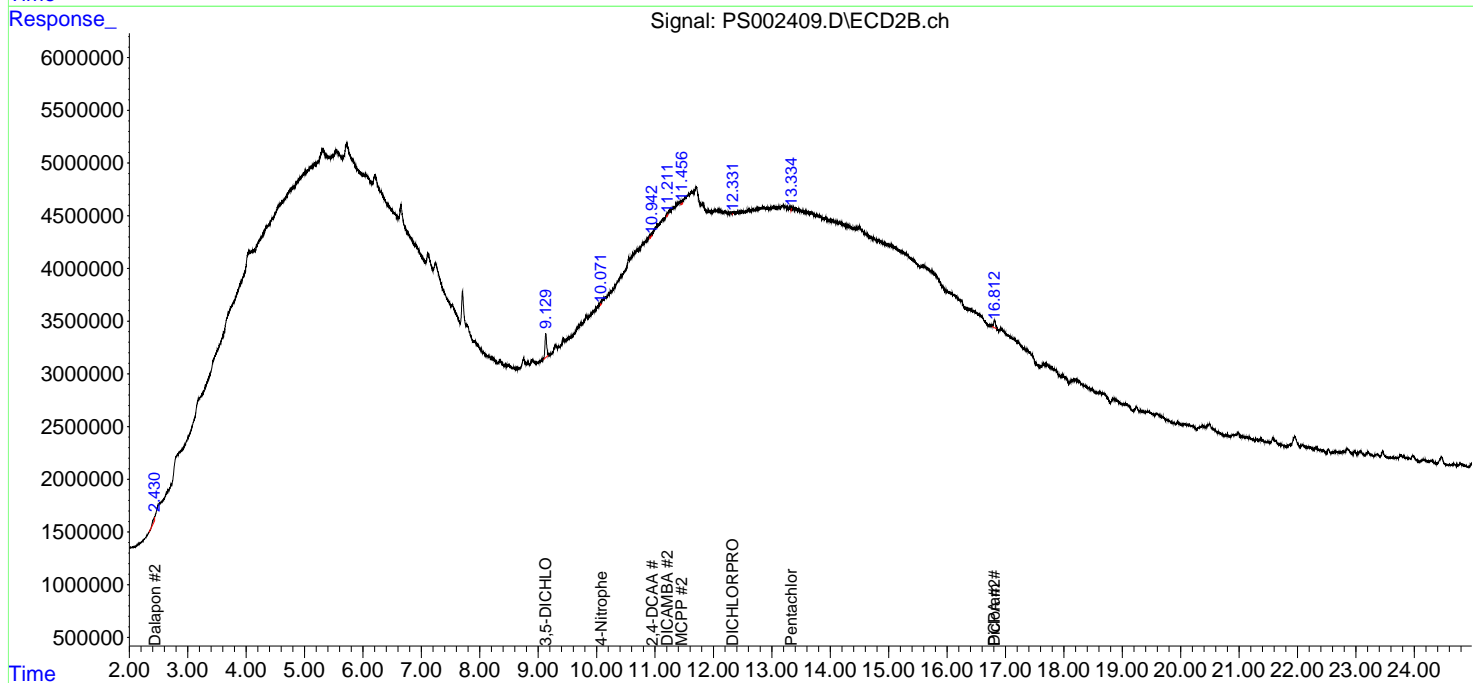
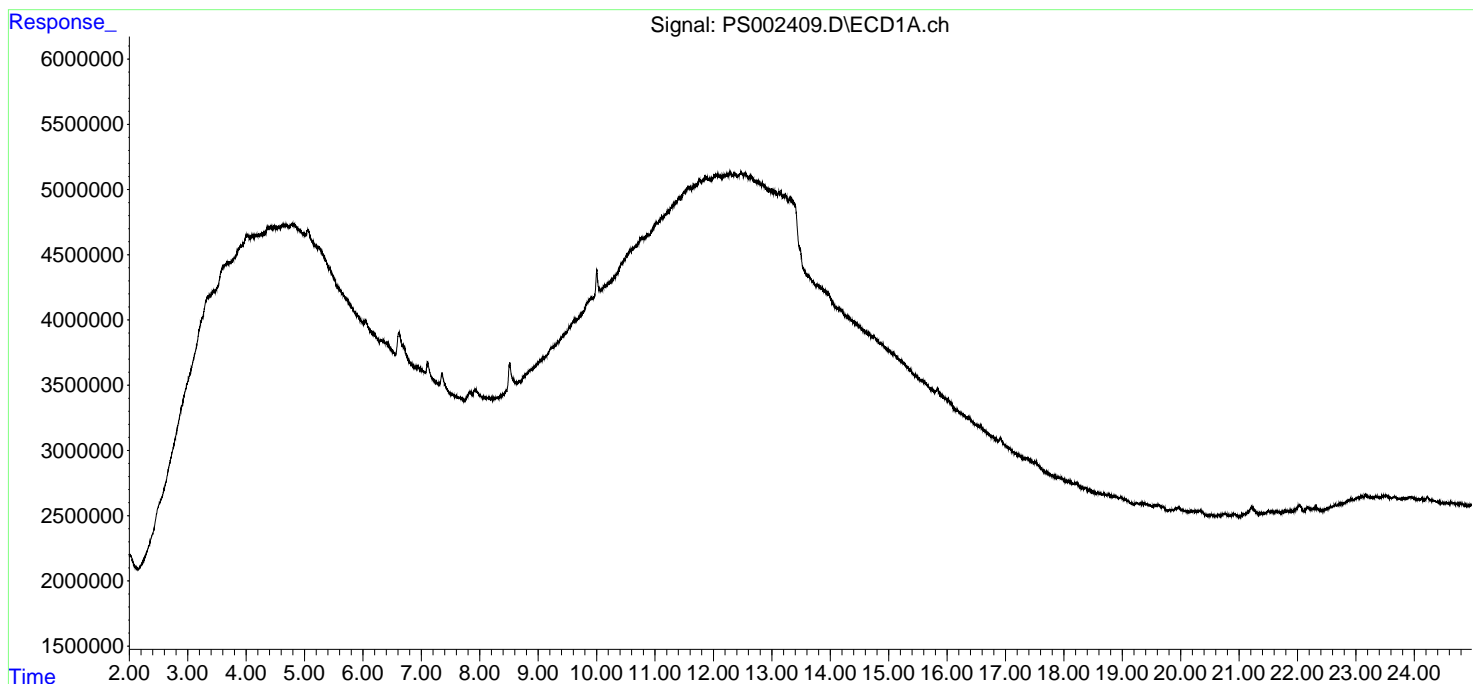
(f)=RT Delta > 1/2 Window (#)=Amounts differ by > 25% (m)=manual int.

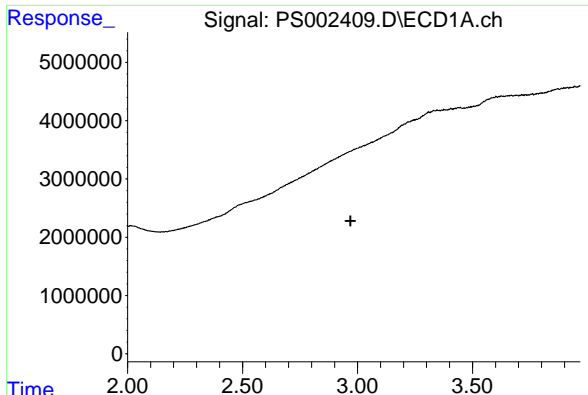
Data Path : Z:\pestpcbsrv\HPCHEM1\ECD_S\Data\PS111218\
 Data File : PS002409.D
 Signal(s) : Signal #1: ECD1A.ch Signal #2: ECD2B.ch
 Acq On : 12 Nov 2018 10:44
 Operator : EI\SJ
 Sample : HEXANE
 Misc :
 ALS Vial : 1 Sample Multiplier: 1

Instrument :
 ECD_S
 ClientSampled :

Integration File signal 1: autoint1.e
 Integration File signal 2: autoint2.e
 Quant Time: Nov 13 06:37:49 2018
 Quant Method : Z:\pestpcbsrv\HPCHEM1\ECD_S\Method\PS110918.M
 Quant Title : 8080.M
 QLast Update : Fri Nov 09 15:54:35 2018
 Response via : Initial Calibration
 Integrator: ChemStation

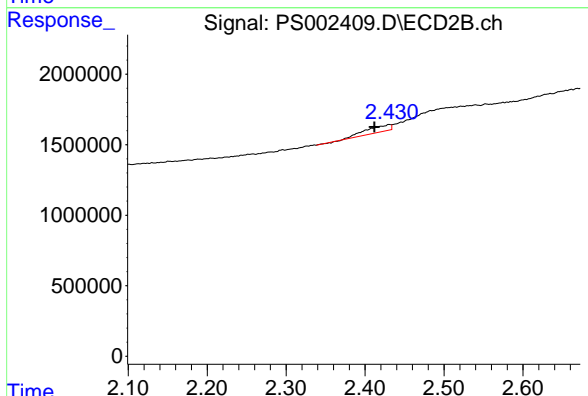
Volume Inj. : 2 µl
 Signal #1 Phase : Rtx-CLPesticides Signal #2 Phase: Rtx-CLPesticides2
 Signal #1 Info : 30M x 0.32mm x 0.5 Signal #2 Info : 30M x 0.32mm x 0.25µm



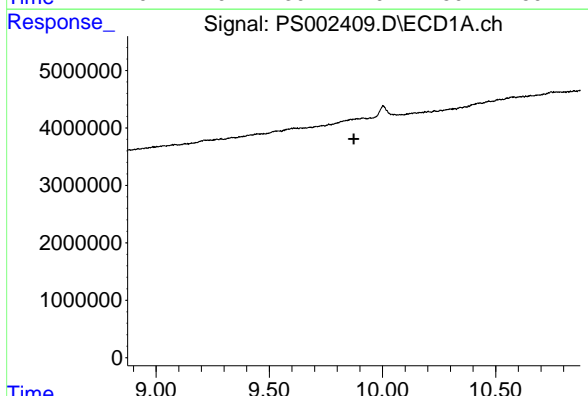


#1 Dalapon
 R.T.: 0.000 min
 Exp R.T. : 2.969 min
 Response: 0
 Conc: N.D.

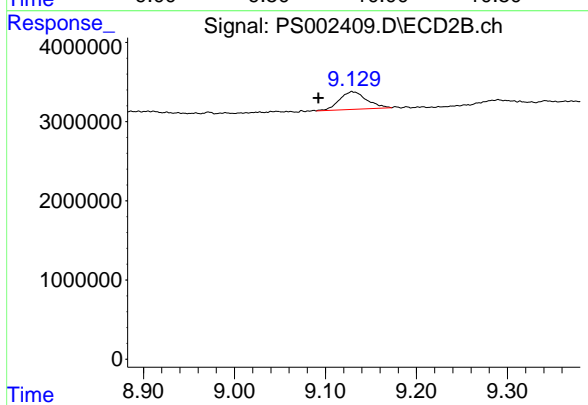
Instrument :
 ECD_S
 ClientSampled :



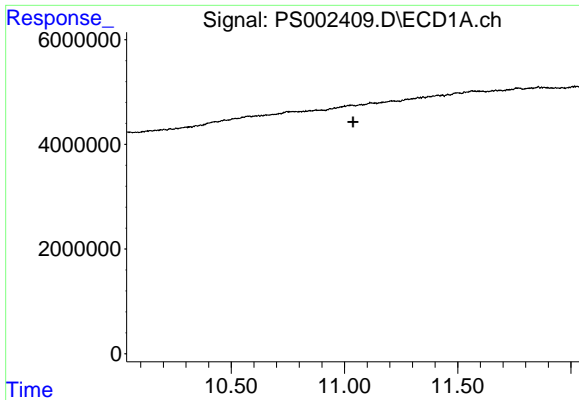
#1 Dalapon
 R.T.: 2.431 min
 Delta R.T.: 0.019 min
 Response: 1021292
 Conc: 2.37 ng/ml



#2 3,5-DICHLOROBENZOIC ACID
 R.T.: 0.000 min
 Exp R.T. : 9.874 min
 Response: 0
 Conc: N.D.



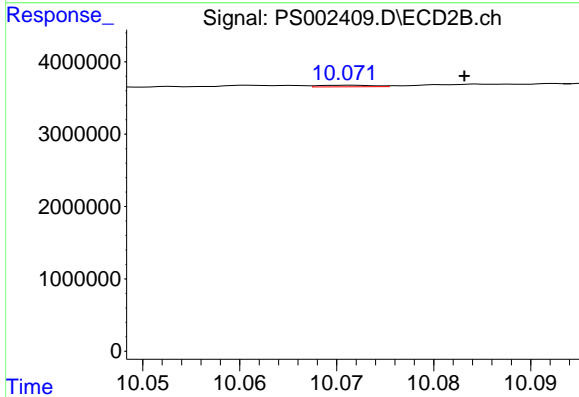
#2 3,5-DICHLOROBENZOIC ACID
 R.T.: 9.129 min
 Delta R.T.: 0.037 min
 Response: 4629853
 Conc: 10.21 ng/ml



#3 4-Nitrophenol

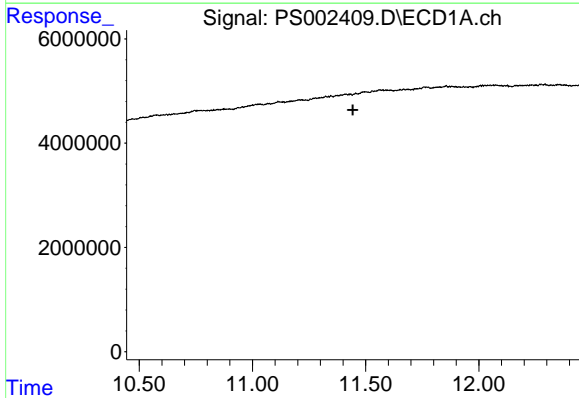
R.T.: 0.000 min
 Exp R.T. : 11.037 min
 Response: 0
 Conc: N.D.

Instrument :
 ECD_S
 ClientSampled :



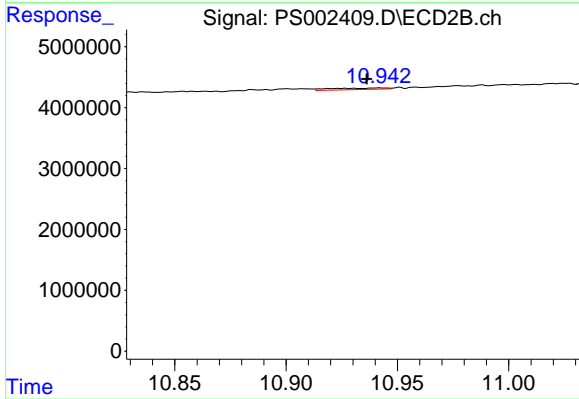
#3 4-Nitrophenol

R.T.: 10.071 min
 Delta R.T.: -0.012 min
 Response: 87957
 Conc: 0.50 ng/ml



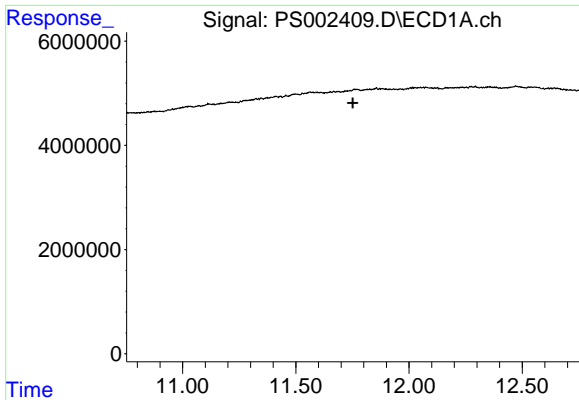
#4 2,4-DCAA

R.T.: 0.000 min
 Exp R.T. : 11.444 min
 Response: 0
 Conc: N.D.



#4 2,4-DCAA

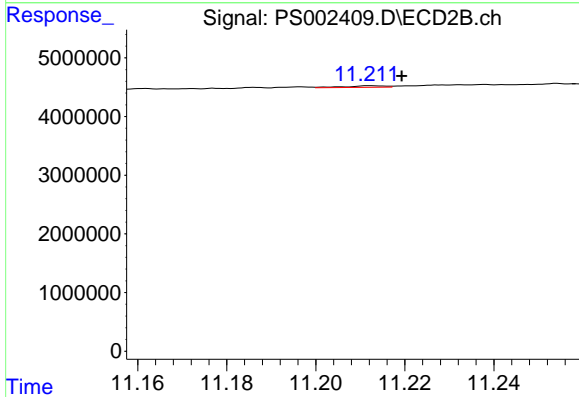
R.T.: 10.942 min
 Delta R.T.: 0.006 min
 Response: 408287
 Conc: 1.12 ng/ml



#5 DICAMBA

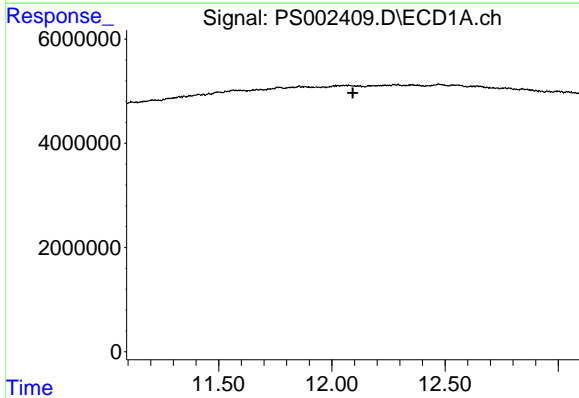
R.T.: 0.000 min
 Exp R.T. : 11.752 min
 Response: 0
 Conc: N.D.

Instrument :
 ECD_S
 ClientSampleId :



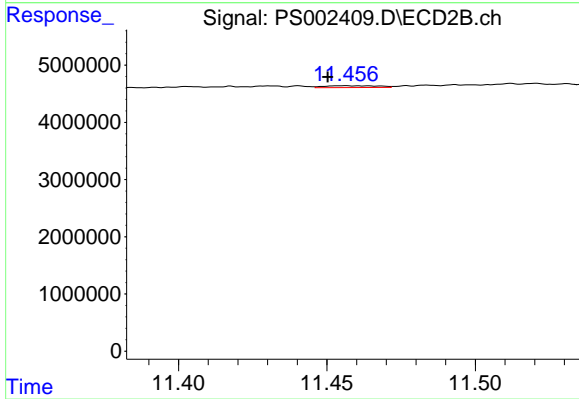
#5 DICAMBA

R.T.: 11.212 min
 Delta R.T.: -0.007 min
 Response: 161019
 Conc: 0.12 ng/ml



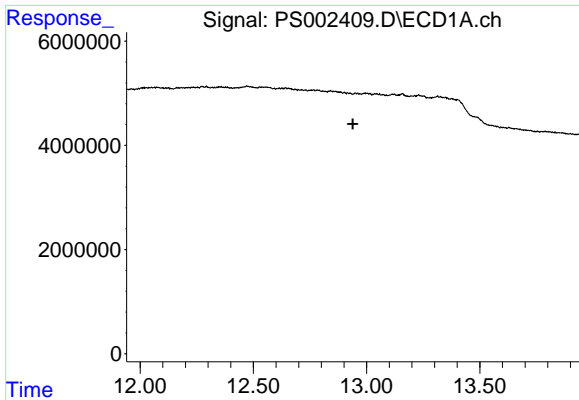
#6 MCPP

R.T.: 0.000 min
 Exp R.T. : 12.093 min
 Response: 0
 Conc: N.D.



#6 MCPP

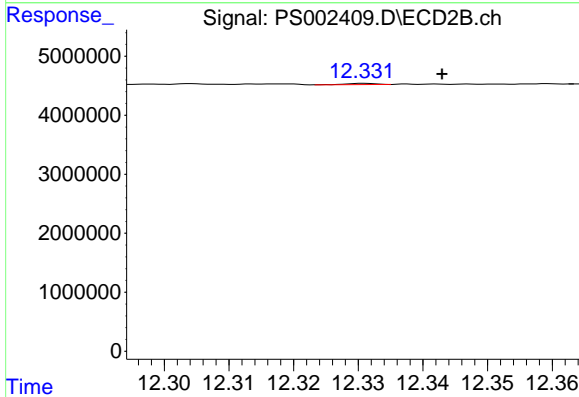
R.T.: 11.457 min
 Delta R.T.: 0.006 min
 Response: 405007
 Conc: 0.45 ug/ml



#8 DICHLORPROP

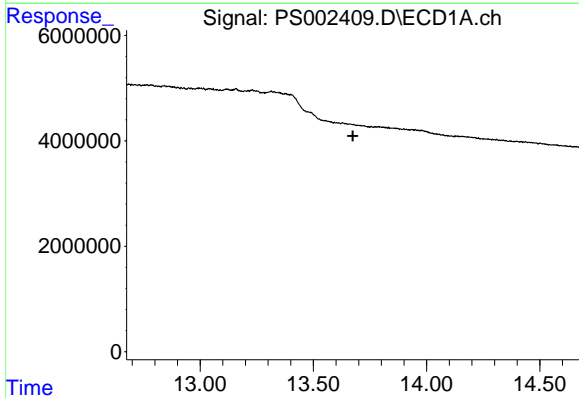
R.T.: 0.000 min
 Exp R.T. : 12.939 min
 Response: 0
 Conc: N.D.

Instrument :
 ECD_S
 ClientSampleId :



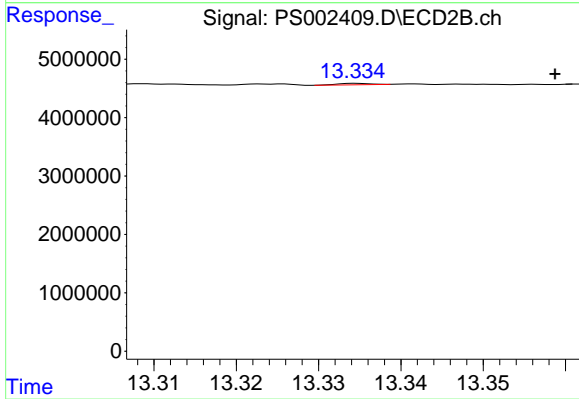
#8 DICHLORPROP

R.T.: 12.331 min
 Delta R.T.: -0.012 min
 Response: 67892
 Conc: 0.20 ng/ml



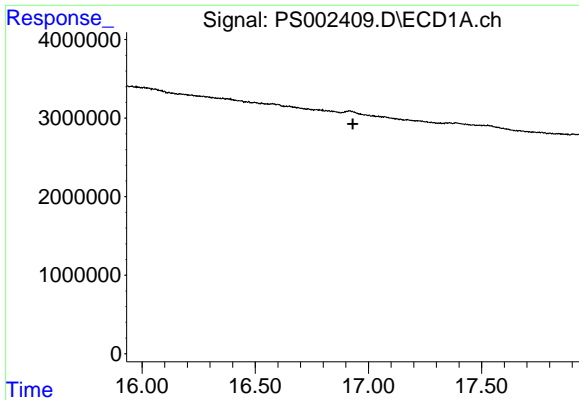
#10 Pentachlorophenol

R.T.: 0.000 min
 Exp R.T. : 13.675 min
 Response: 0
 Conc: N.D.



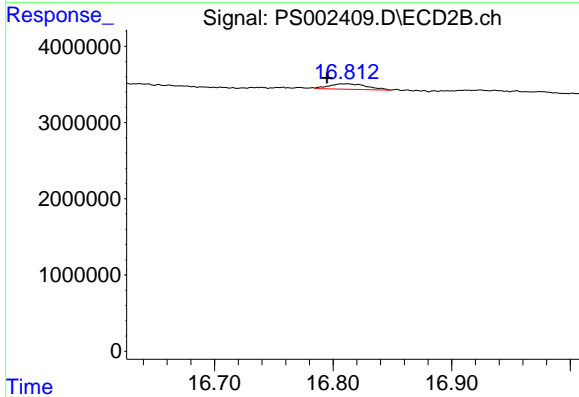
#10 Pentachlorophenol

R.T.: 13.335 min
 Delta R.T.: -0.024 min
 Response: 63368
 Conc: 0.01 ng/ml

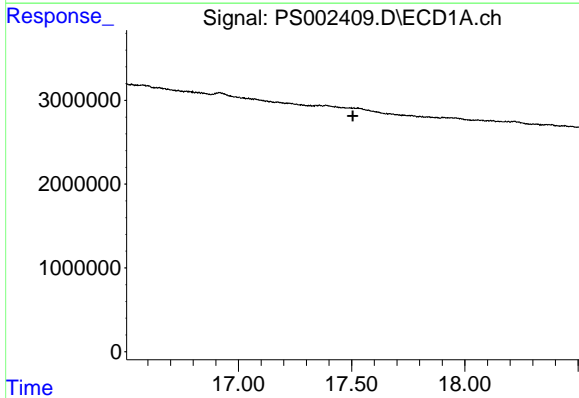


#15 Picloram
 R.T.: 0.000 min
 Exp R.T. : 16.931 min
 Response: 0
 Conc: N.D.

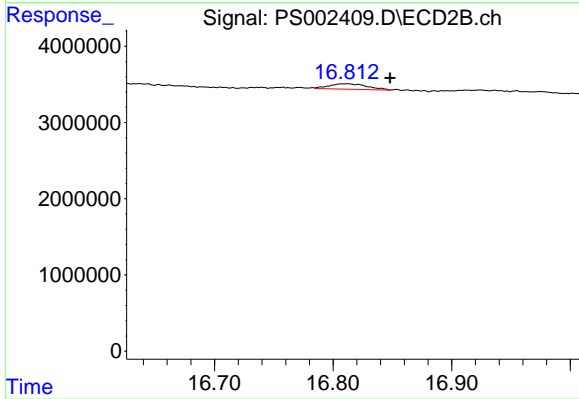
Instrument :
 ECD_S
 ClientSampled :



#15 Picloram
 R.T.: 16.812 min
 Delta R.T.: 0.017 min
 Response: 1563741
 Conc: 0.59 ng/ml



#16 DCPA
 R.T.: 0.000 min
 Exp R.T. : 17.506 min
 Response: 0
 Conc: N.D.



#16 DCPA
 R.T.: 16.812 min
 Delta R.T.: -0.036 min
 Response: 1563741
 Conc: 0.65 ng/ml