

Data Path : Z:\pestpcbsrv\HPCHEM1\ECD_S\Data\PS111319\
 Data File : PS007684.D
 Signal(s) : Signal #1: ECD1A.ch Signal #2: ECD2B.ch
 Acq On : 13 Nov 2019 09:11
 Operator : SM\AJ
 Sample : HSTDCCC750
 Misc :
 ALS Vial : 3 Sample Multiplier: 1

Instrument :
 ECD_S
 ClientSampleId :
 HSTDCCC750

Integration File signal 1: autoint1.e
 Integration File signal 2: autoint2.e
 Quant Time: Nov 13 11:09:04 2019
 Quant Method : Z:\pestpcbsrv\HPCHEM1\ECD_S\Method\PS110619.M
 Quant Title : 8080.M
 QLast Update : Wed Nov 06 02:45:11 2019
 Response via : Initial Calibration
 Integrator: ChemStation

Volume Inj. : 2 µl
 Signal #1 Phase : Rtx-CLPesticides Signal #2 Phase: Rtx-CLPesticides2
 Signal #1 Info : 30M x 0.32mm x0.5 Signal #2 Info : 30M x 0.32mm x 0.25µm

| | Compound | RT#1 | RT#2 | Resp#1 | Resp#2 | ng/ml | ng/ml |
|-----------------------------|--------------|-------|-------|-----------|----------|---------|---------|
| ----- | | | | | | | |
| System Monitoring Compounds | | | | | | | |
| 4) S | 2,4-DCAA | 5.434 | 5.159 | 1070.7E6 | 541.0E6 | 777.444 | 769.975 |
| Target Compounds | | | | | | | |
| 1) T | Dalapon | 2.019 | 1.729 | 1219.6E6 | 641.9E6 | 674.143 | 540.592 |
| 2) T | 3,5-DICHL... | 4.810 | 4.468 | 1289.8E6 | 649.3E6 | 722.934 | 718.686 |
| 3) T | 4-Nitroph... | 5.289 | 4.850 | 431.2E6 | 271.4E6 | 676.569 | 659.579 |
| 5) T | DICAMBA | 5.583 | 5.283 | 3760.9E6 | 1943.6E6 | 739.264 | 734.442 |
| 6) T | MCP P | 5.735 | 5.367 | 279.4E6 | 144.6E6 | 73.320 | 74.457 |
| 7) T | MCPA | 5.866 | 5.542 | 404.3E6 | 217.0E6 | 73.455 | 72.193 |
| 8) T | DICHLORPROP | 6.206 | 5.810 | 927.9E6 | 476.6E6 | 734.114 | 726.754 |
| 9) T | 2,4-D | 6.420 | 6.078 | 1007.8E6 | 585.3E6 | 718.583 | 725.770 |
| 10) T | Pentachlo... | 6.676 | 6.440 | 14102.2E6 | 7215.9E6 | 744.137 | 736.889 |
| 11) T | 2,4,5-TP ... | 7.209 | 6.804 | 5548.1E6 | 2878.1E6 | 738.269 | 734.973 |
| 12) T | 2,4,5-T | 7.480 | 7.162 | 6082.1E6 | 2725.4E6 | 742.982 | 738.019 |
| 13) T | 2,4-DB | 8.007 | 7.646 | 780.9E6 | 378.3E6 | 730.189 | 773.811 |
| 14) T | DINOSEB | 9.089 | 7.954 | 4332.5E6 | 2091.7E6 | 721.423 | 719.509 |
| 15) T | Picloram | 8.924 | 8.888 | 8832.1E6 | 4656.2E6 | 795.462 | 794.724 |
| 16) T | DCPA | 9.362 | 8.846 | 7056.5E6 | 3762.8E6 | 719.456 | 720.118 |

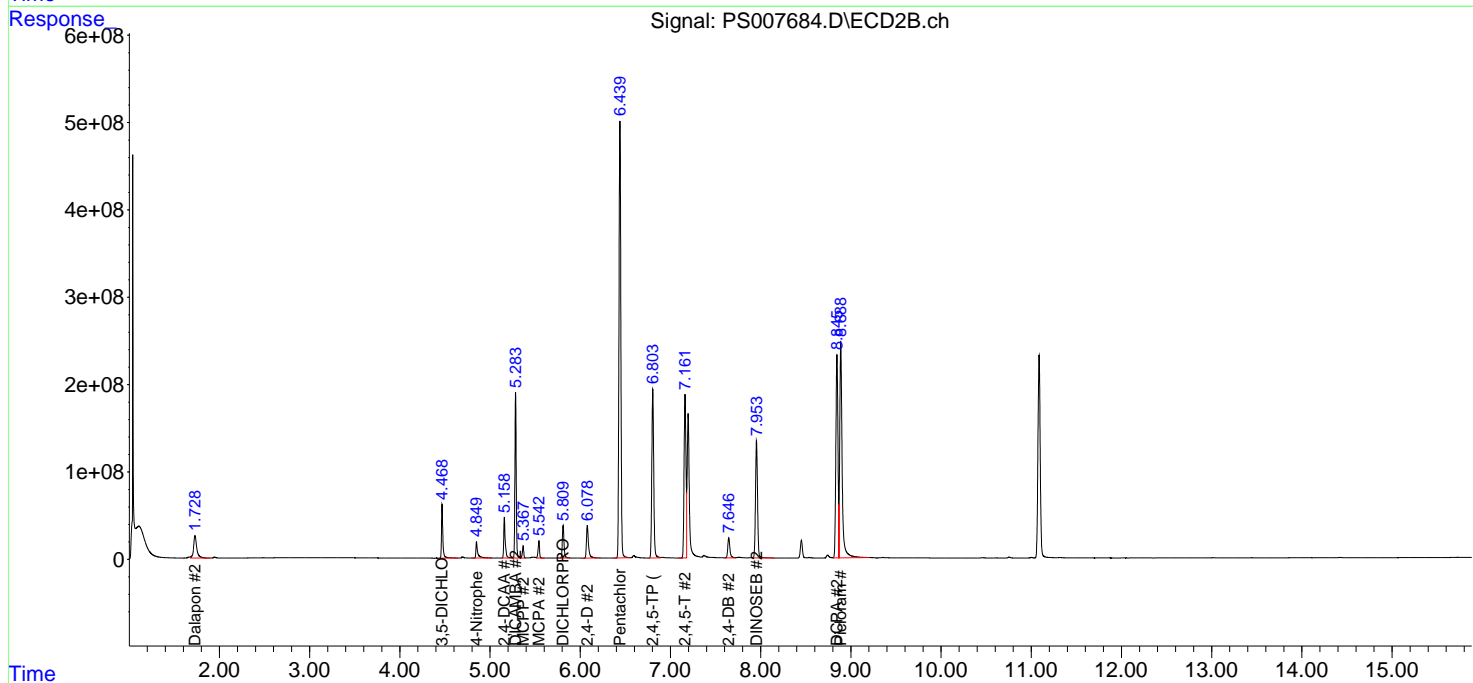
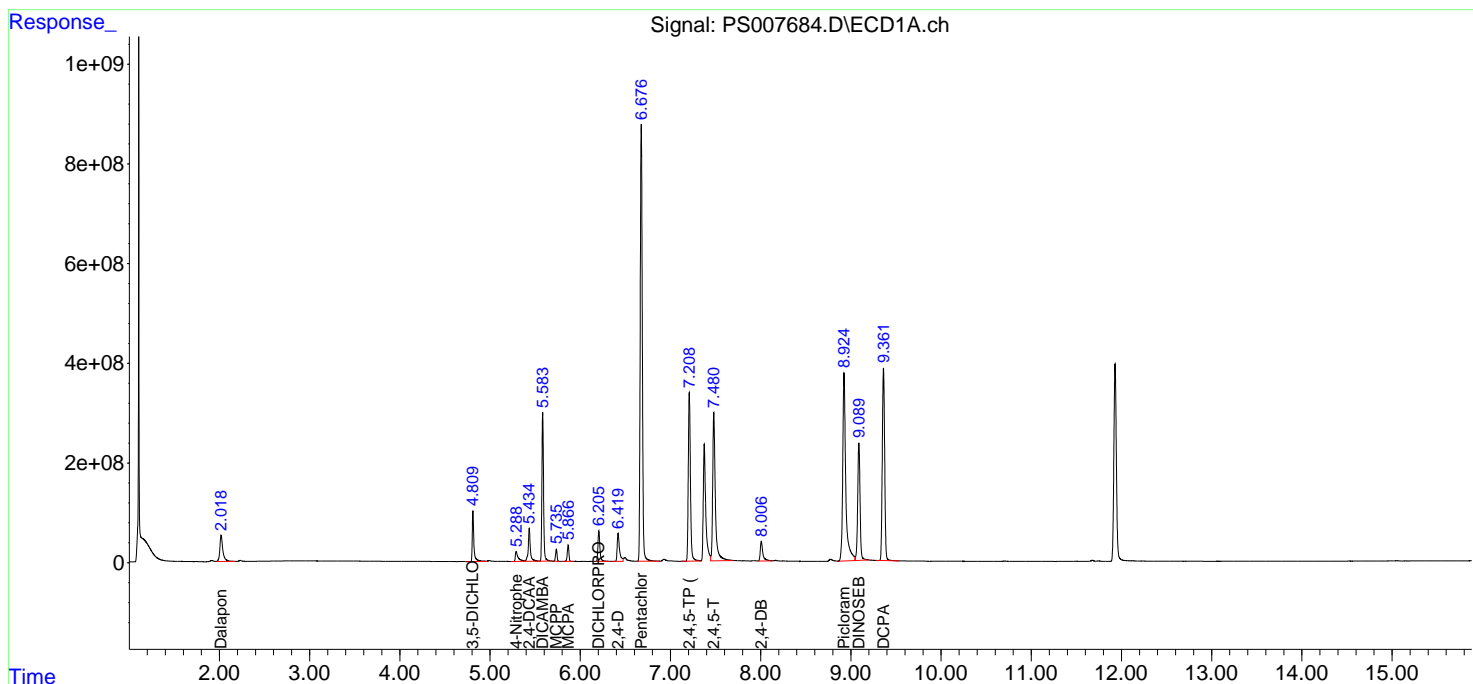
(f)=RT Delta > 1/2 Window (#)=Amounts differ by > 25% (m)=manual int.

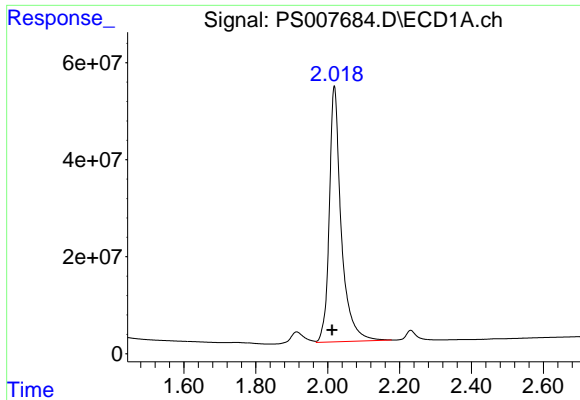
Data Path : Z:\pestpcbsrv\HPCHEM1\ECD_S\Data\PS111319\
 Data File : PS007684.D
 Signal(s) : Signal #1: ECD1A.ch Signal #2: ECD2B.ch
 Acq On : 13 Nov 2019 09:11
 Operator : SM\AJ
 Sample : HSTDCCC750
 Misc :
 ALS Vial : 3 Sample Multiplier: 1

Instrument :
 ECD_S
 ClientSampleId :
 HSTDCCC750

Integration File signal 1: autoint1.e
 Integration File signal 2: autoint2.e
 Quant Time: Nov 13 11:09:04 2019
 Quant Method : Z:\pestpcbsrv\HPCHEM1\ECD_S\Method\PS110619.M
 Quant Title : 8080.M
 QLast Update : Wed Nov 06 02:45:11 2019
 Response via : Initial Calibration
 Integrator: ChemStation

Volume Inj. : 2 µl
 Signal #1 Phase : Rtx-CLPesticides Signal #2 Phase: Rtx-CLPesticides2
 Signal #1 Info : 30M x 0.32mm x0.5 Signal #2 Info : 30M x 0.32mm x 0.25µm

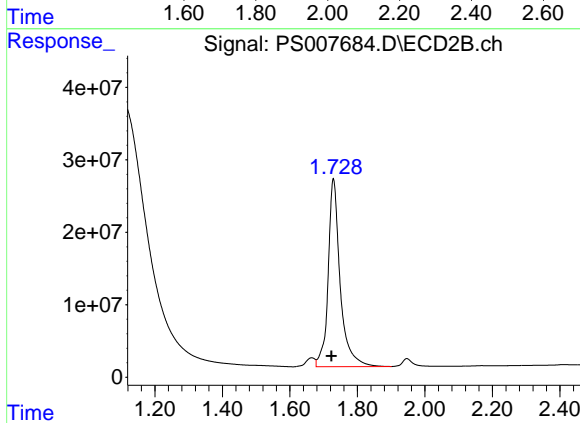




#1 Dalapon

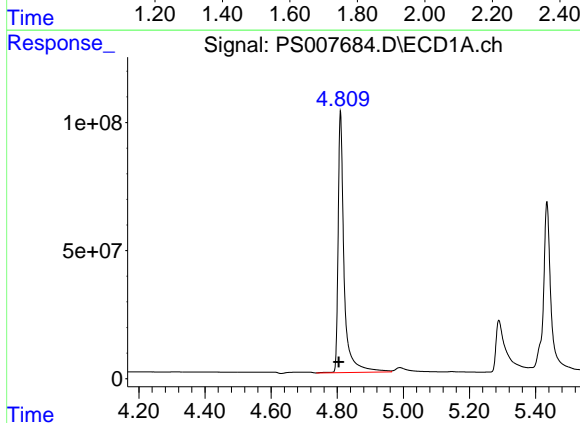
R.T.: 2.019 min
 Delta R.T.: 0.007 min
 Response: 1219644812
 Conc: 674.14 ng/ml

Instrument :
 ECD_S
 ClientSampleId :
 HSTDCCC750



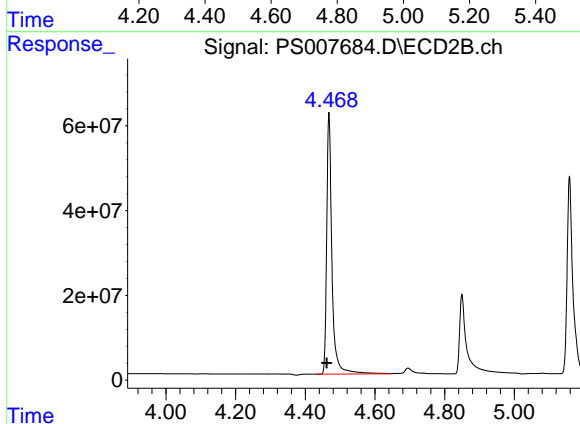
#1 Dalapon

R.T.: 1.729 min
 Delta R.T.: 0.006 min
 Response: 641899966
 Conc: 540.59 ng/ml



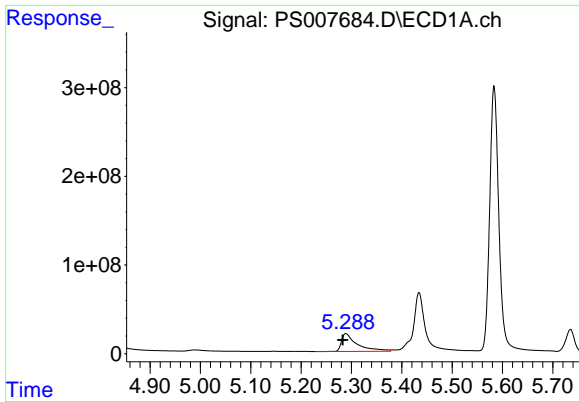
#2 3,5-DICHLOROBENZOIC ACID

R.T.: 4.810 min
 Delta R.T.: 0.006 min
 Response: 1289787894
 Conc: 722.93 ng/ml



#2 3,5-DICHLOROBENZOIC ACID

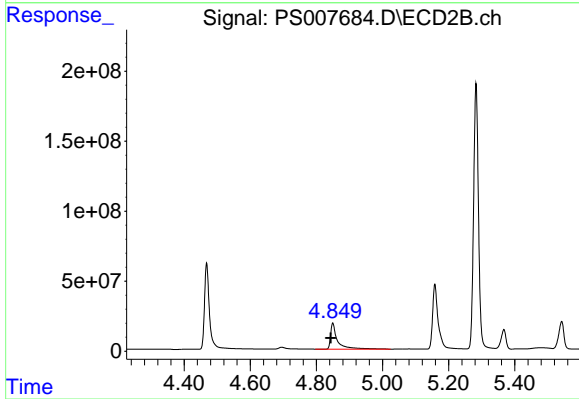
R.T.: 4.468 min
 Delta R.T.: 0.006 min
 Response: 649282778
 Conc: 718.69 ng/ml



#3 4-Nitrophenol

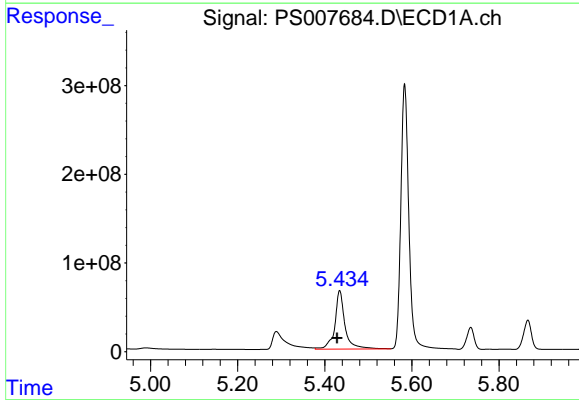
R.T.: 5.289 min
 Delta R.T.: 0.007 min
 Response: 431172795
 Conc: 676.57 ng/ml

Instrument :
 ECD_S
 ClientSampleId :
 HSTDCCC750



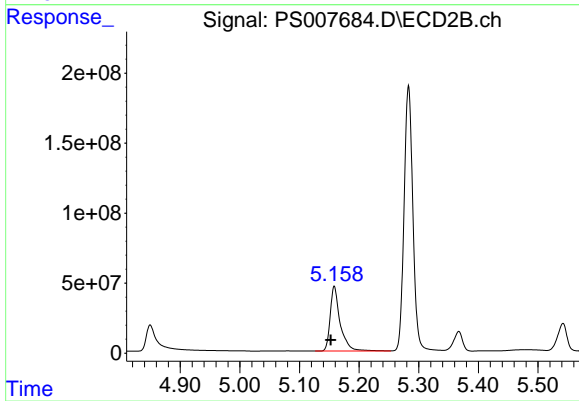
#3 4-Nitrophenol

R.T.: 4.850 min
 Delta R.T.: 0.007 min
 Response: 271413370
 Conc: 659.58 ng/ml



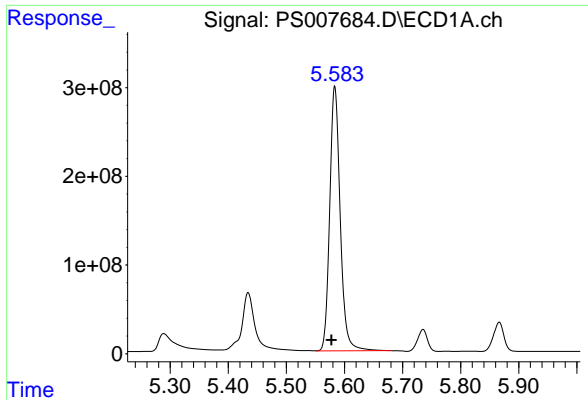
#4 2,4-DCAA

R.T.: 5.434 min
 Delta R.T.: 0.006 min
 Response: 1070684311
 Conc: 777.44 ng/ml



#4 2,4-DCAA

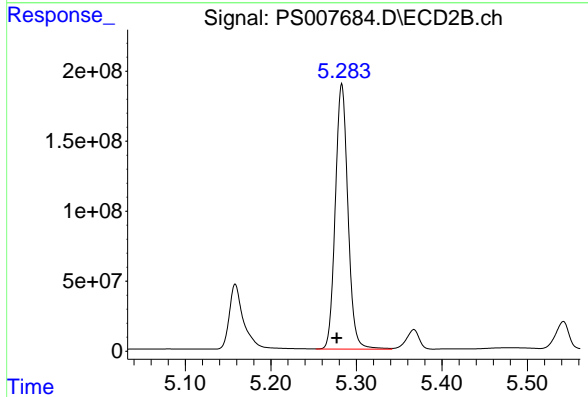
R.T.: 5.159 min
 Delta R.T.: 0.006 min
 Response: 540957039
 Conc: 769.98 ng/ml



#5 DICAMBA

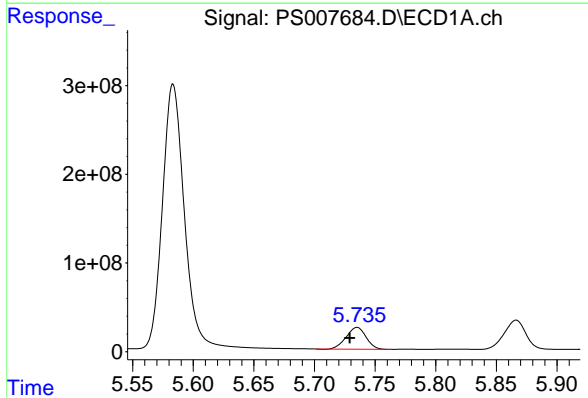
R.T.: 5.583 min
 Delta R.T.: 0.006 min
 Response: 3760926526
 Conc: 739.26 ng/ml

Instrument :
 ECD_S
 ClientSampleId :
 HSTDCCC750



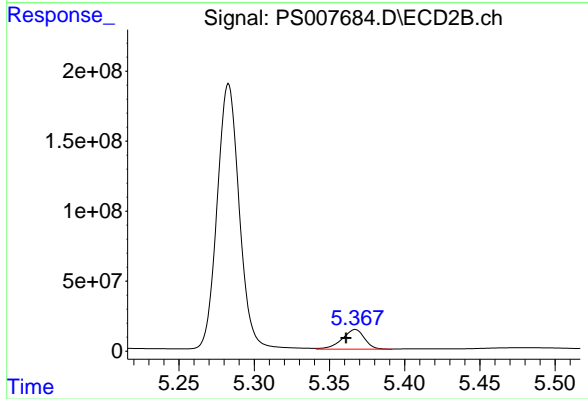
#5 DICAMBA

R.T.: 5.283 min
 Delta R.T.: 0.006 min
 Response: 1943583847
 Conc: 734.44 ng/ml



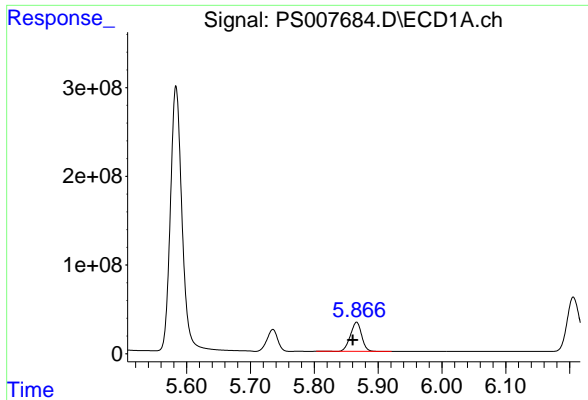
#6 MCP

R.T.: 5.735 min
 Delta R.T.: 0.006 min
 Response: 279422877
 Conc: 73.32 ug/ml



#6 MCP

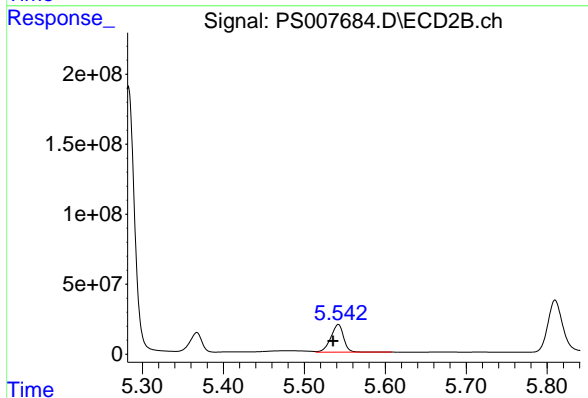
R.T.: 5.367 min
 Delta R.T.: 0.006 min
 Response: 144647992
 Conc: 74.46 ug/ml



#7 MCPA

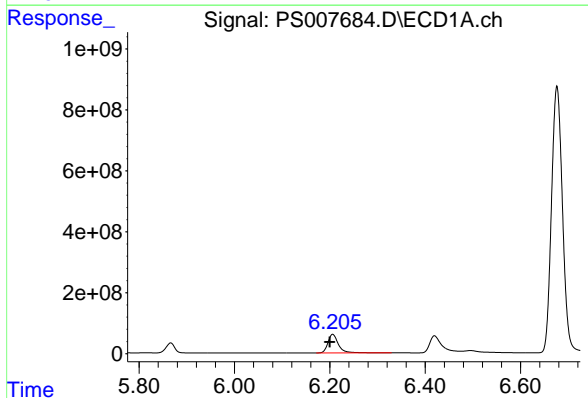
R.T.: 5.866 min
 Delta R.T.: 0.006 min
 Response: 404317780
 Conc: 73.46 ug/ml

Instrument :
 ECD_S
 ClientSampleId :
 HSTDCCC750



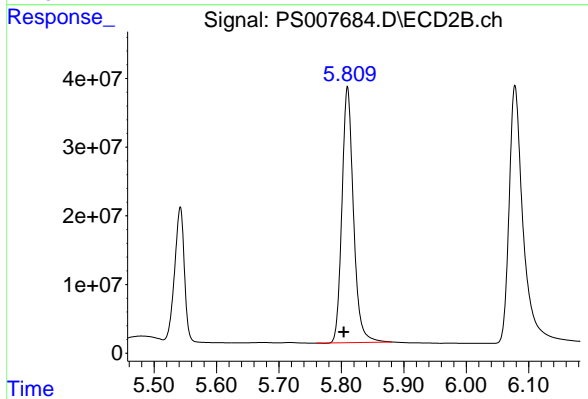
#7 MCPA

R.T.: 5.542 min
 Delta R.T.: 0.006 min
 Response: 216990505
 Conc: 72.19 ug/ml



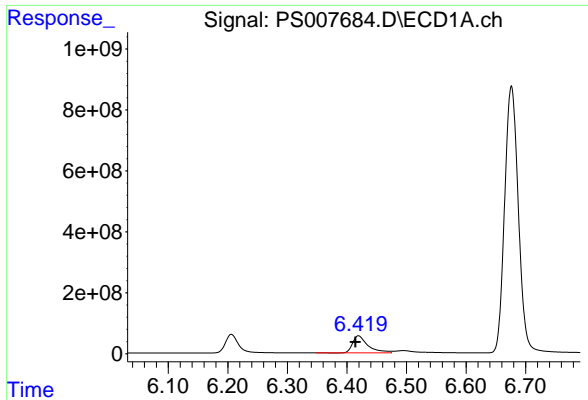
#8 DICHLORPROP

R.T.: 6.206 min
 Delta R.T.: 0.006 min
 Response: 927876092
 Conc: 734.11 ng/ml



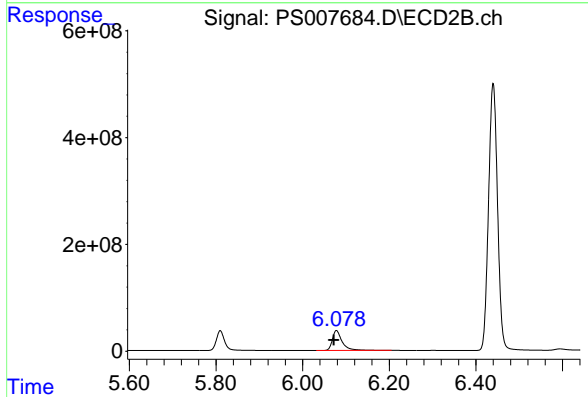
#8 DICHLORPROP

R.T.: 5.810 min
 Delta R.T.: 0.006 min
 Response: 476605113
 Conc: 726.75 ng/ml

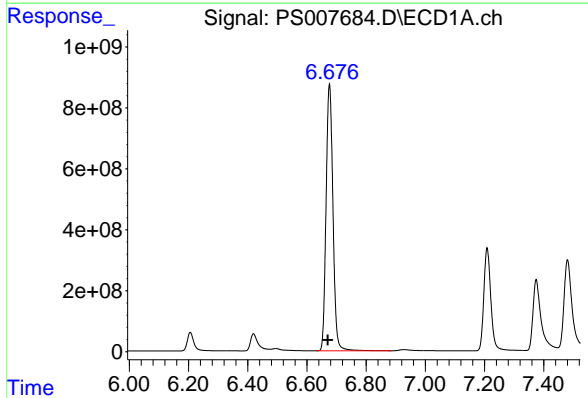


#9 2,4-D
 R.T.: 6.420 min
 Delta R.T.: 0.005 min
 Response: 1007846792
 Conc: 718.58 ng/ml

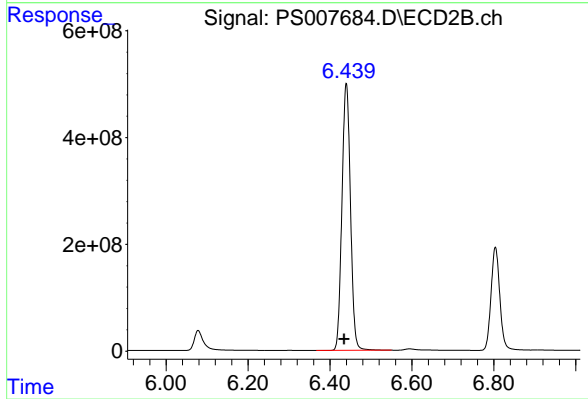
Instrument :
 ECD_S
 ClientSampleId :
 HSTDCCC750



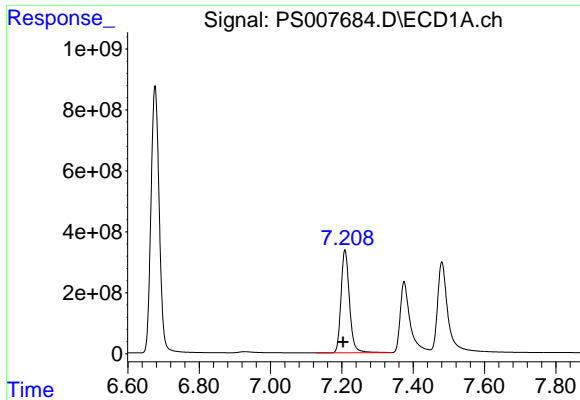
#9 2,4-D
 R.T.: 6.078 min
 Delta R.T.: 0.006 min
 Response: 585260111
 Conc: 725.77 ng/ml



#10 Pentachlorophenol
 R.T.: 6.676 min
 Delta R.T.: 0.006 min
 Response: 14102187277
 Conc: 744.14 ng/ml

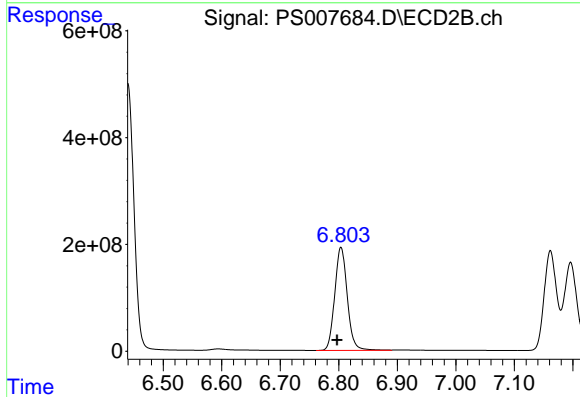


#10 Pentachlorophenol
 R.T.: 6.440 min
 Delta R.T.: 0.005 min
 Response: 7215943462
 Conc: 736.89 ng/ml

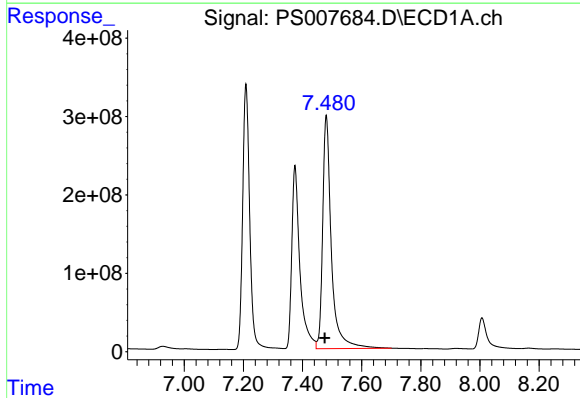


#11 2,4,5-TP (SILVEX)
 R.T.: 7.209 min
 Delta R.T.: 0.005 min
 Response: 5548077557
 Conc: 738.27 ng/ml

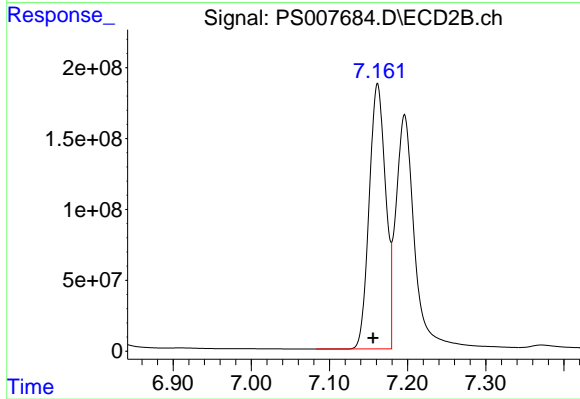
Instrument :
 ECD_S
 ClientSampleId :
 HSTDCCC750



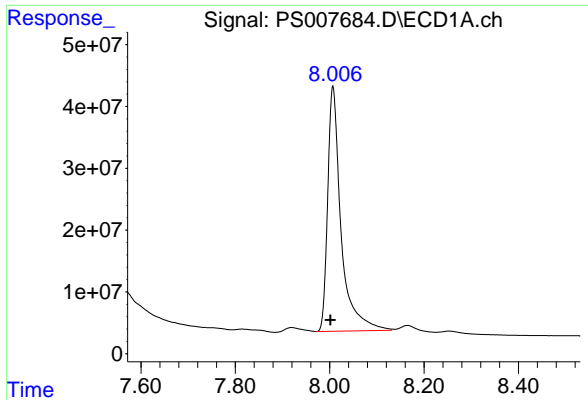
#11 2,4,5-TP (SILVEX)
 R.T.: 6.804 min
 Delta R.T.: 0.007 min
 Response: 2878053913
 Conc: 734.97 ng/ml



#12 2,4,5-T
 R.T.: 7.480 min
 Delta R.T.: 0.005 min
 Response: 6082090903
 Conc: 742.98 ng/ml



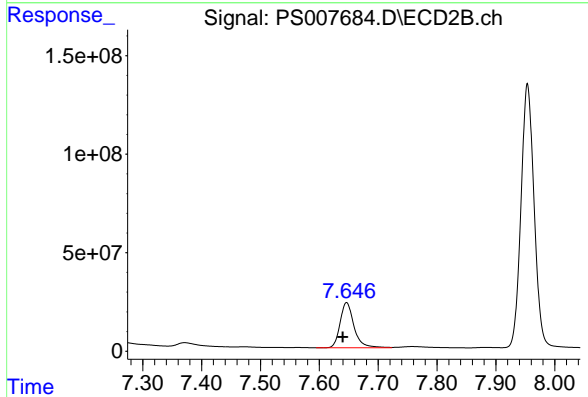
#12 2,4,5-T
 R.T.: 7.162 min
 Delta R.T.: 0.006 min
 Response: 2725435542
 Conc: 738.02 ng/ml



#13 2,4-DB

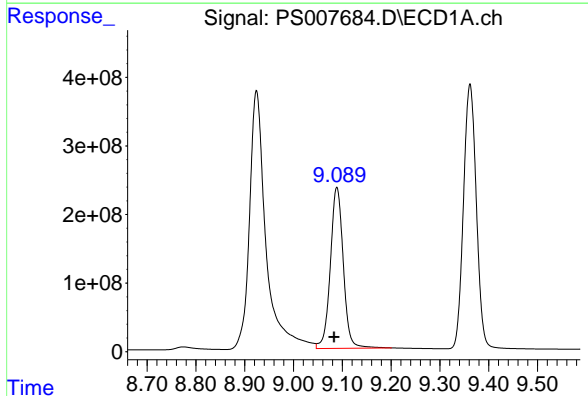
R.T.: 8.007 min
 Delta R.T.: 0.005 min
 Response: 780875070
 Conc: 730.19 ng/ml

Instrument :
 ECD_S
 ClientSampleId :
 HSTDCCC750



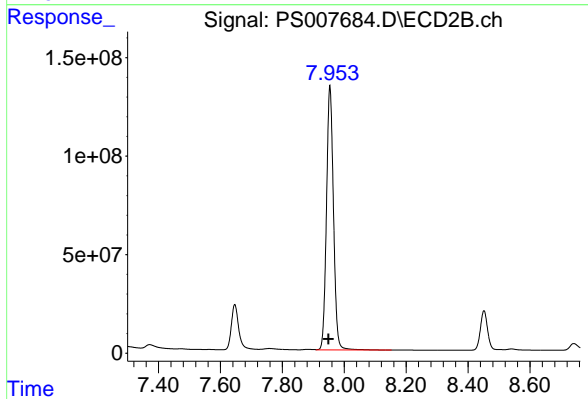
#13 2,4-DB

R.T.: 7.646 min
 Delta R.T.: 0.006 min
 Response: 378285237
 Conc: 773.81 ng/ml



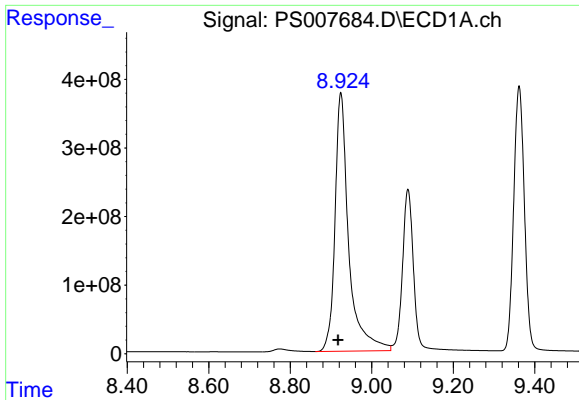
#14 DINOSEB

R.T.: 9.089 min
 Delta R.T.: 0.006 min
 Response: 4332477214
 Conc: 721.42 ng/ml



#14 DINOSEB

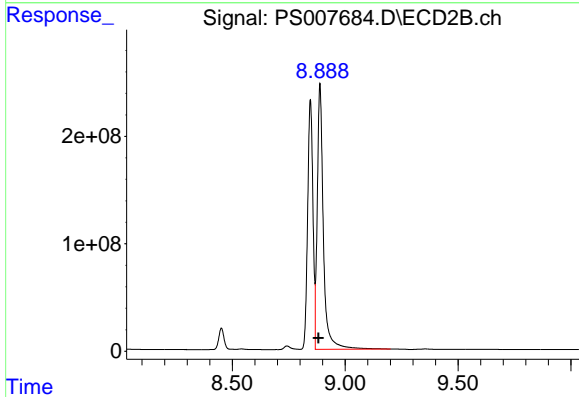
R.T.: 7.954 min
 Delta R.T.: 0.005 min
 Response: 2091712877
 Conc: 719.51 ng/ml



#15 Picloram

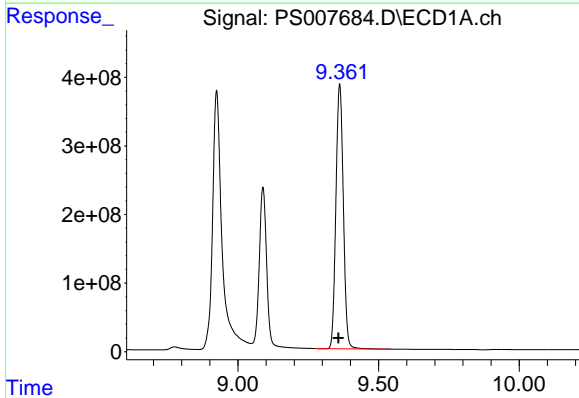
R.T.: 8.924 min
 Delta R.T.: 0.006 min
 Response: 8832127606
 Conc: 795.46 ng/ml

Instrument :
 ECD_S
 ClientSampleId :
 HSTDCCC750



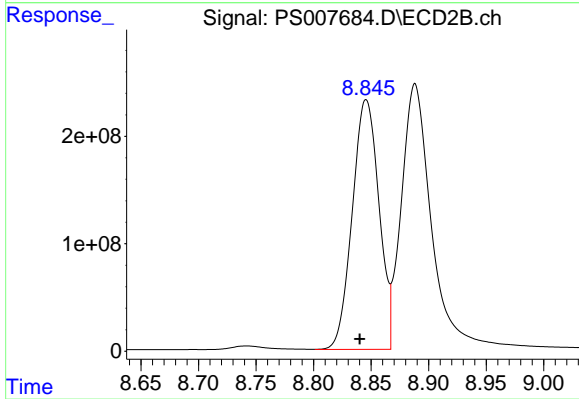
#15 Picloram

R.T.: 8.888 min
 Delta R.T.: 0.006 min
 Response: 4656238922
 Conc: 794.72 ng/ml



#16 DCPA

R.T.: 9.362 min
 Delta R.T.: 0.005 min
 Response: 7056507838
 Conc: 719.46 ng/ml



#16 DCPA

R.T.: 8.846 min
 Delta R.T.: 0.006 min
 Response: 3762796330
 Conc: 720.12 ng/ml