

Data Path : Z:\pestpcbsrv\HPCHEM1\ECD_S\Data\PS111418\
 Data File : PS002420.D
 Signal(s) : Signal #1: ECD1A.ch Signal #2: ECD2B.ch
 Acq On : 14 Nov 2018 12:59
 Operator : EI\SJ
 Sample : HEXANE
 Misc :
 ALS Vial : 1 Sample Multiplier: 1

Instrument :
 ECD_S
 ClientSampleId :
 HEXANE

Integration File signal 1: autoint1.e
 Integration File signal 2: autoint2.e
 Quant Time: Nov 15 02:36:30 2018
 Quant Method : Z:\pestpcbsrv\HPCHEM1\ECD_S\Method\PS110918.M
 Quant Title : 8080.M
 QLast Update : Fri Nov 09 15:54:35 2018
 Response via : Initial Calibration
 Integrator: ChemStation

Volume Inj. : 2 µl
 Signal #1 Phase : Rtx-CLPesticides Signal #2 Phase: Rtx-CLPesticides2
 Signal #1 Info : 30M x 0.32mm x0.5 Signal #2 Info : 30M x 0.32mm x 0.25µm

Compound	RT#1	RT#2	Resp#1	Resp#2	ng/ml	ng/ml
----------	------	------	--------	--------	-------	-------

 System Monitoring Compounds

Target Compounds

6) T	MCP	0.000	11.475	0	16827784	N.D.	18.551 #
15) T	Picloram	0.000	16.850	0	275756	N.D.	0.104 #
16) T	DCPA	0.000	16.850	0	275756	N.D.	0.115 #

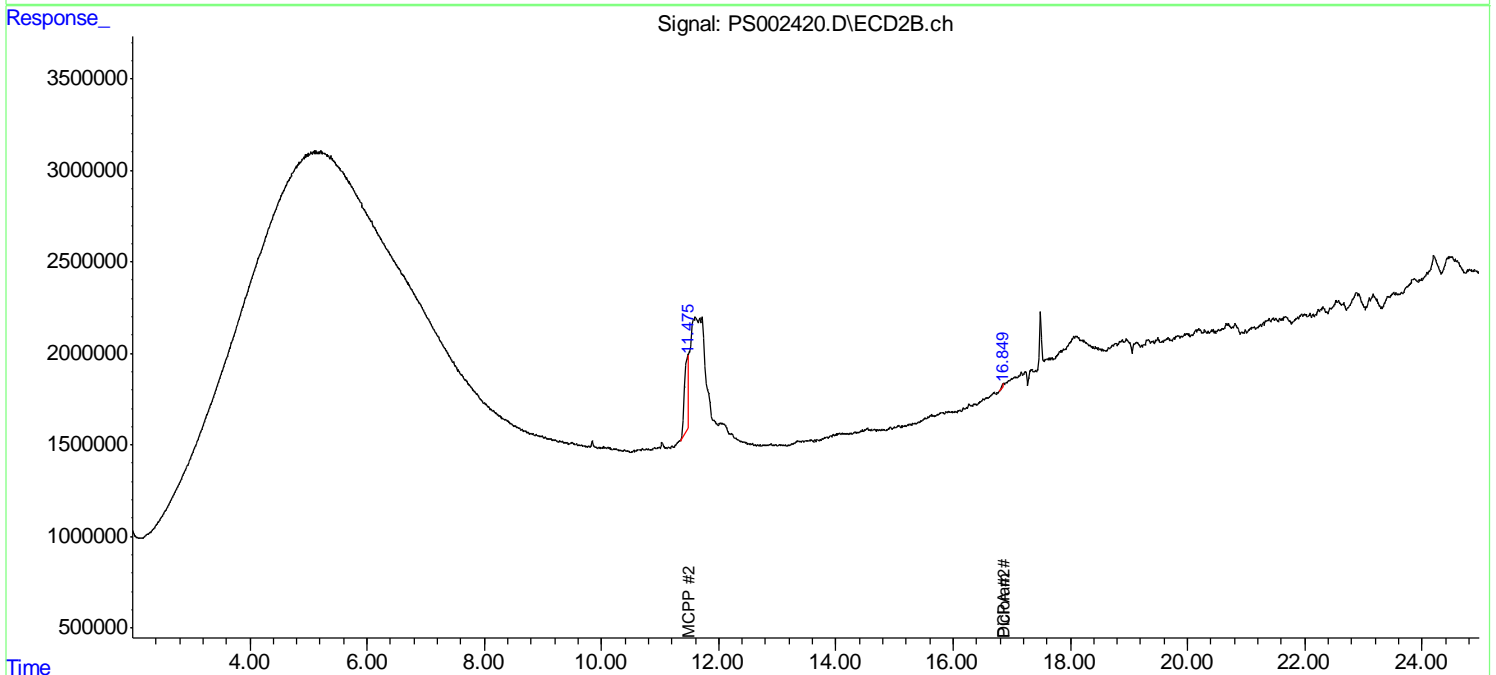
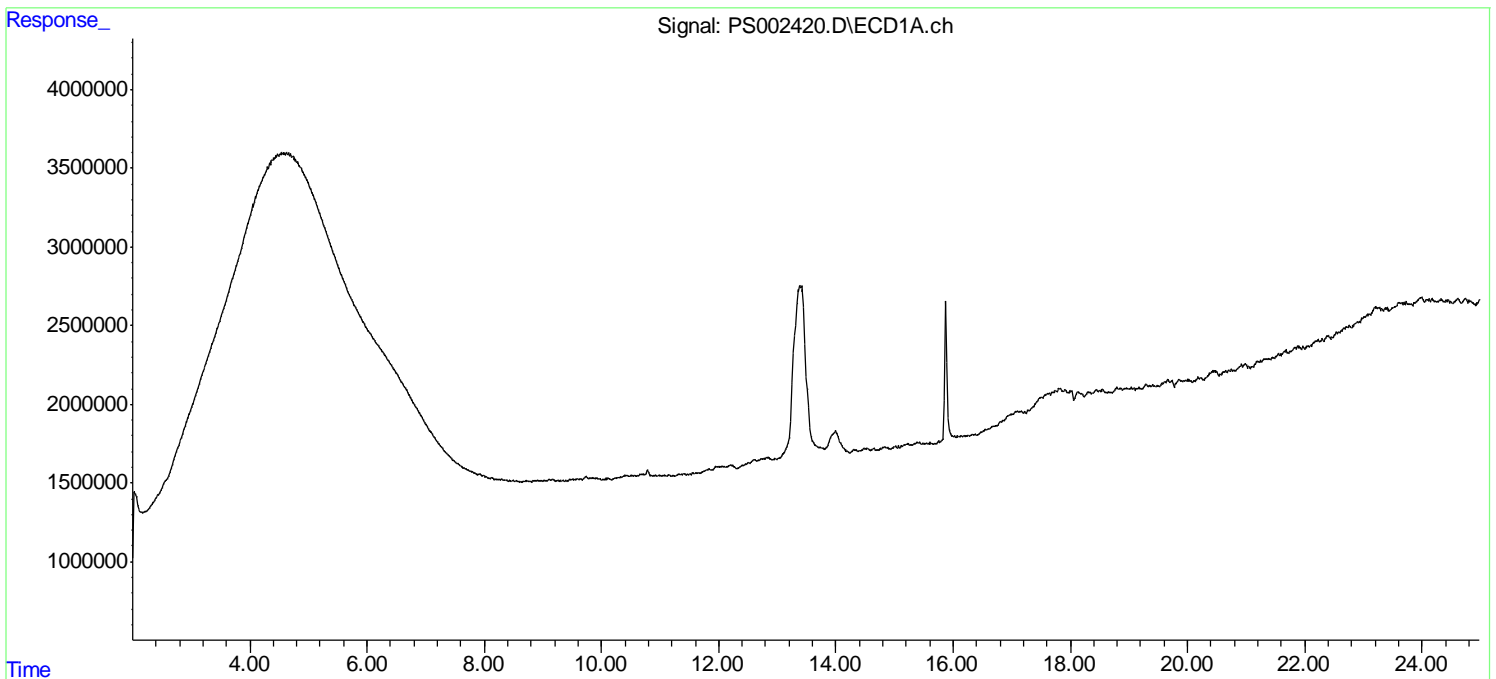
 (f)=RT Delta > 1/2 Window (#)=Amounts differ by > 25% (m)=manual int.

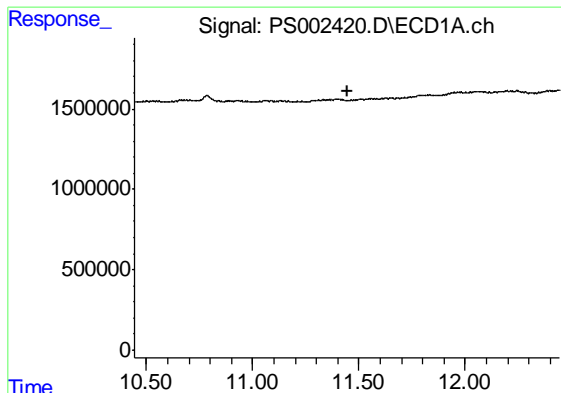
Data Path : Z:\pestpcbsrv\HPCHEM1\ECD_S\Data\PS111418\
 Data File : PS002420.D
 Signal(s) : Signal #1: ECD1A.ch Signal #2: ECD2B.ch
 Acq On : 14 Nov 2018 12:59
 Operator : EI\SJ
 Sample : HEXANE
 Misc :
 ALS Vial : 1 Sample Multiplier: 1

Instrument :
 ECD_S
 ClientSampleId :
 HEXANE

Integration File signal 1: autoint1.e
 Integration File signal 2: autoint2.e
 Quant Time: Nov 15 02:36:30 2018
 Quant Method : Z:\pestpcbsrv\HPCHEM1\ECD_S\Method\PS110918.M
 Quant Title : 8080.M
 QLast Update : Fri Nov 09 15:54:35 2018
 Response via : Initial Calibration
 Integrator: ChemStation

Volume Inj. : 2 µl
 Signal #1 Phase : Rtx-CLPesticides Signal #2 Phase: Rtx-CLPesticides2
 Signal #1 Info : 30M x 0.32mm x0.5 Signal #2 Info : 30M x 0.32mm x 0.25µm

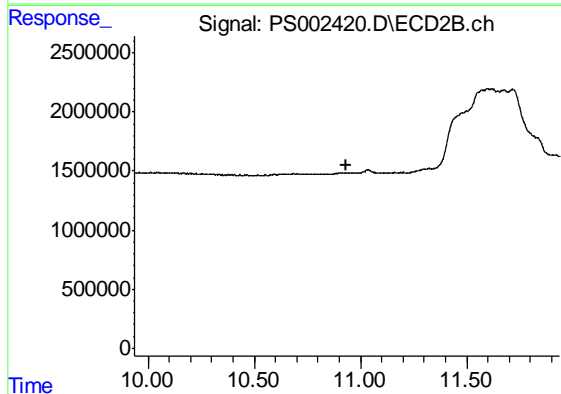




#4 2,4-DCAA

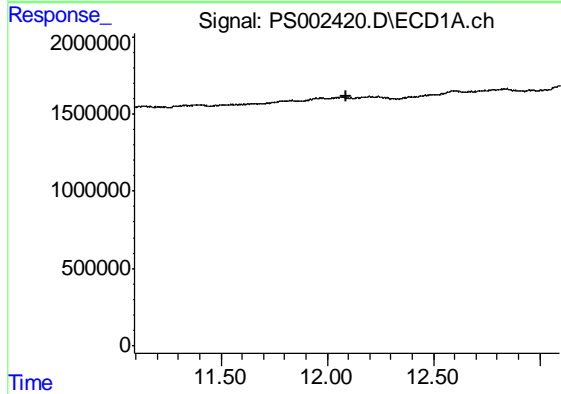
R.T.: 0.000 min
 Exp R.T. : 11.444 min
 Response: 0
 Conc: N.D.

Instrument :
 ECD_S
 ClientSampled :
 HEXANE



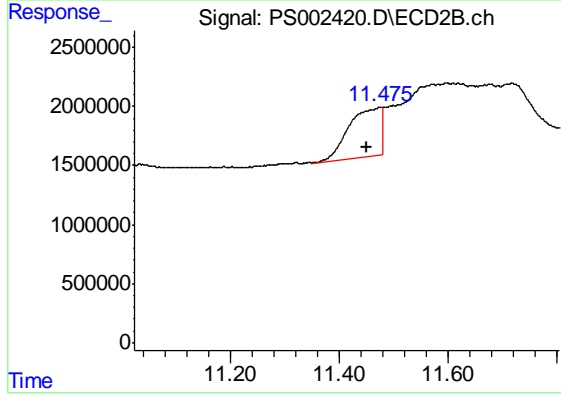
#4 2,4-DCAA

R.T.: 0.000 min
 Exp R.T. : 10.936 min
 Response: 0
 Conc: N.D.



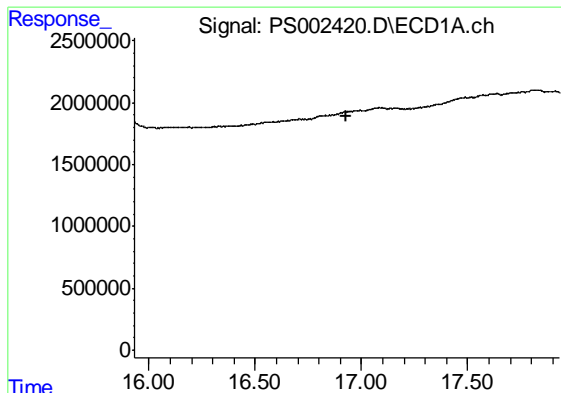
#6 MCPP

R.T.: 0.000 min
 Exp R.T. : 12.093 min
 Response: 0
 Conc: N.D.



#6 MCPP

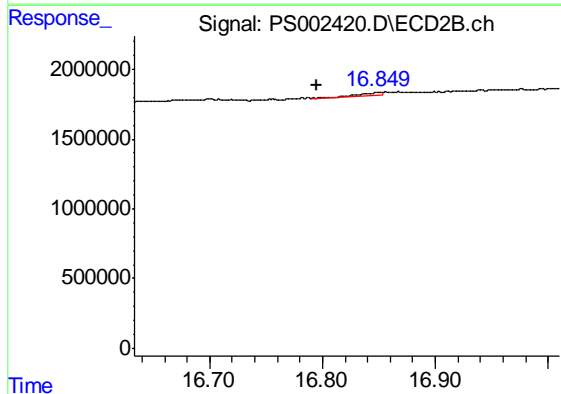
R.T.: 11.475 min
 Delta R.T.: 0.025 min
 Response: 16827784
 Conc: 18.55 ug/ml



#15 Picloram

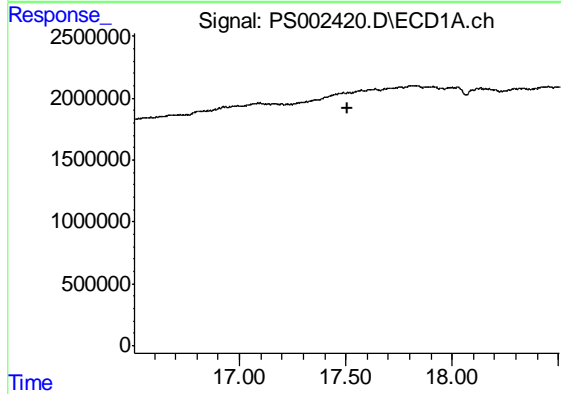
R.T.: 0.000 min
 Exp R.T. : 16.931 min
 Response: 0
 Conc: N.D.

Instrument :
 ECD_S
 ClientSampleId :
 HEXANE



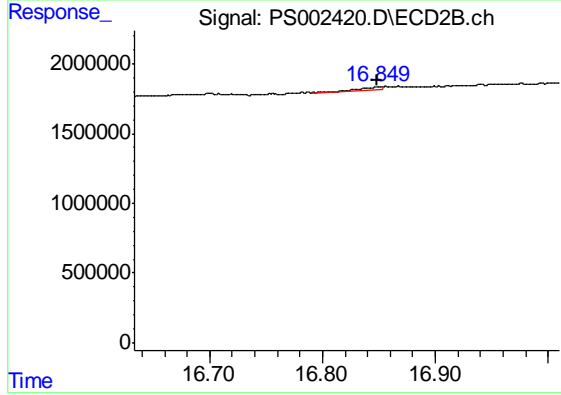
#15 Picloram

R.T.: 16.850 min
 Delta R.T.: 0.055 min
 Response: 275756
 Conc: 0.10 ng/ml



#16 DCPA

R.T.: 0.000 min
 Exp R.T. : 17.506 min
 Response: 0
 Conc: N.D.



#16 DCPA

R.T.: 16.850 min
 Delta R.T.: 0.002 min
 Response: 275756
 Conc: 0.11 ng/ml